

# Dispatcher

## October 13 Meeting

**What to Bring:**

Name Tag and Door Prize Money  
 Show and Tell  
 Opportunity Quilt tickets and money

Library Books and Totes  
 Door Prize Ticket Money  
 Quilts, Quilts, Quilts for the Home Tour

**Guild Business**

**Show and Tell**

**Refreshment Break**

**Door Prize**

**Activity: Quilt Grab for Home Tour - See enclosed instructions for labeling quilts.**

**Refreshments provided by:**

*Flo Souza, Corrinne Baker and Jackie Weddel*

**Door Prize brought by:**

*Darlene Packard-Mossman*

**ATTENTION!**

Look for the attachment with this newsletter of the current Block of the Month Pattern, due in Decem-

Cookies — We need 3 dozen cookies from each of you for the refreshment house on the Home Tour. Deliver to Rose Burcher

## 2015 PNQG Officers

<b>President:</b>	Elisa Gurley	760 985-6917	elisagurley@gmail.com
<b>VP Programs:</b>	Mary Bell	760 218-5415	mabell19494@yahoo.com
	Darlene Packard-Mossman	760 912-7947	doctordar@shandar.us
<b>VP Membership:</b>	Teresa Howard	702 400-6603	tchoward33@gmail.com
	Susan Butler	760 524-7262	bsandkisses@gmail.com
<b>Secretary:</b>	Carol Gaines	909 559-0099	gainesmath@yahoo.com
<b>Treasurer:</b>	Joanne Tschantre	760 868-1048	jotschantre@gmail.com
<b>Newsletter</b>	Joy Agnew	760 249-6068	j.agnew@verizon.net



## Home Tour

The following pages are attached to this newsletter to help you and us keep track of your quilts.

Quilt Owner Identification Tags: Use the enclosed tags to identify your quilt to us. For quilt number, number your quilts as follows: First initial, last initial, and then a number you assign. EG: Rose Burcher would be RB1, RB2, RB3, etc. This is important – we want to get the right quilts back to you. The description will go on the Inventory List.

Home Tour Personal Quilt Inventory List: This information will be used for producing the printed labels that go onto the home tour quilts, and also to ensure tracking for every quilt we receive. For a description, give us a general description of colors and if it is machine or hand quilted, and machine or hand pieced. Also, comment on its history if you would like it on the printed label. Bring this completed list with you to the November Meeting, along with your quilts with identification labels attached. At the meeting, you will complete the last column to identify which house your quilts are assigned to. We will make a copy of your list at the end of the meeting – be sure to have that done before you leave. Keep this list until the December meeting, at which time your quilts will be returned and you can check them off your list. Home names are as follows: (Be aware that the location of the quilt may change as houses are decorated and needs demand) The Quilt Lady will keep a master inventory with location of each quilt.)



Melissa Heim  
Flo Souza

November 18  
November 28

Mary Ann Kunz  
w/apology to Mary Ann, left out of the October Newsletter

October 22

## Opportunity Quilt

Please bring in all opportunity quilt ticket stubs and money. The drawing is during the December meeting. We did have more tickets printed, so you can buy more at the November and December meetings.

## PROGRAMS AND WORKSHOPS

- November 10 - This is our infamous night for selection of quilts for the Home Tour. Much more information to be provided for arguably the most fun and chaotic meeting of the year.
- December 5 (Saturday) - HOME TOUR — all members need to be on board with this important fund raiser.
- December 8 - Annual Christmas Party and Potluck. Your President and Board members are planning a fun night. Quilts from the Home Tour will be returned to you. If you cannot make it to the meeting, please ask someone to get your quilts for you.

The December Newsletter will show all upcoming programs and workshops that we have scheduled. We want everyone to have advanced warning for workshops so you can schedule it on your calendar and plan for time off from work or a full Saturday.

## CHRISTMAS PARTY

Can you believe that our Pine Needles Quilt Guild has been operating for 30 years? A small but mighty guild. So in celebration of thirty years, we are having a theme party of “Dressing to the Nines”. Now, we know that some of us have different ideas for dress-up. For some of us, it might wearing our best pair of jeans. So, you decide, but since it is our 30th year, Pearls do seem appropriate. Wear your best pearls or your pop beads. We’ll just have fun with it. More to come next month about what to bring to the potluck.

## Quilts of Valor

### Meeting Schedule

**Second Wednesday of each month at Tops and Bobbins** **10:30 – 2:30**

**Fourth Wednesday of each month at Joyce Gwinner’s** **10:00 – 3:00**  
**2235 East Canyon, Wrightwood, 760-249-5315**

Picture at right: Joyce Gwinner presenting a Quilt of Valor to Korean Veteran Bill Agnew at his 85th birthday party.



## Elections

A reminder that the slate of officers for 2016 will be presented at our November meeting. We are still in need of a “lead” person to fill the Vice President of Membership spot. It is not too late to throw yourself in the race. Please take a moment to consider this job. Submit your name to Teresa Howard as soon as you can. Elections will be held at the November meeting.

# Friends of the Library Project

Dispat

From Joanne Tschantre, here are the parameters for the quilts to be made for this project:

The quilts should be no smaller than 15" on any side and no larger than 30". They can be made with any technique, painted, pieced, appliquéd or a combination. Books should be suitable for preschool through sixth graders. Quilt makers need to buy a current copy of the book they want to recreate and that book will be given to the winner along with their quilt. The guild will reimburse the quilter for the cost of the

book. Along with the quilt, each maker should include a brief description of why they choose the book and/or what significance it has for them. Quilts are due mid March.



## Photos from Show and Tell



## SCCQG 2016 Quiltfest Oasis Palm Springs Exhibit

### Call for Quilts

Presented by Mancuso Show Management

“California’s Hues, Tints, Shades and Tones”

**HUES** are the fundamental pigments that identify the full gamut of colors.

**TINTS** are merely any colors with white added.

**SHADES** are humbly any color with black added.

**TONES** are initiated by graying down hues with both white and black.

*Suggestion:* As you travel around the highways, byways unknown locations, and surprising vistas in the state of California, what appearances, impressions, sensations, influences, and/or qualities do you discover that motivate you to create a California quilt using the hues, tints, shades and tones to depict a particular place in California?

A great website to discover the many possibilities of including tints, shades and tones with hues to form a color palette for your quilt can be found at [www.design-seeds.com](http://www.design-seeds.com).

#### Parameters:

- \* Create a quilt based on the theme “California Hues, Tints, Shades, Tones.”
- \* The entire quilt, oriented horizontally must measure 24” horizontally and 20” vertically, including binding.
- \* The quilt must be made with fabric and quilted either by hand or machine or both. It must consist of three layers, and be either bound or closed along the edges.
- \* On the reverse side affix a label with your name, email address, mailing address, phone number, and quilt title. A four-inch (4”) sleeve is required.
- \* Your entry must be free of any text or images protected by copyright unless you have the expressed written permission from the person or institution that holds the copyright and you provide that written permission with your submission.
- \* Entries must be submitted by June 1, 2016. The entry form must be completely filled out including a brief statement about the California image you created. Include a photograph of your quilt with the entry form. Your entry should be sent to Stephania Bommarito 18924 Patronella Avenue, Torrance, CA 90504.
- \* Further information to follow regarding where and when to send your quilt for collection.
- \* If you have questions please contact Stephania at 310-503-7989, or email [quiltwizard1024@gmail.com](mailto:quiltwizard1024@gmail.com).

*Submitted by Beth Stanton (our SCCQG Rep) and recreated from a fuzzy copy of the “Call for Quilts”.*



## Quilt Owner Identification Tags

For quilt number, use your initials, for example: Rose Burcher would be RB1, RB2, RB3, etc.

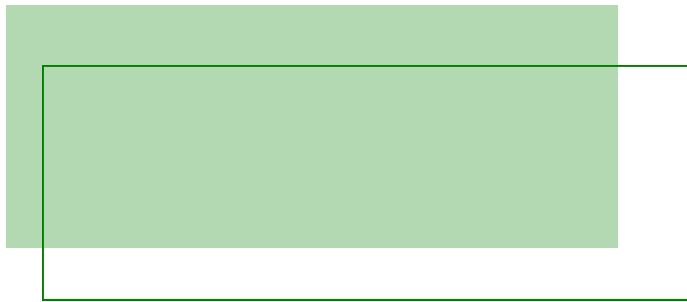
<p><b>QUILT OWNER:</b></p>  <p>Phone Number:</p>  <p>Quilt Number (first and last initial + number)</p>		<p><b>QUILT OWNER:</b></p>  <p>Phone Number:</p>  <p>Quilt Number (first and last initial + number)</p>
<p><b>QUILT OWNER:</b></p>  <p>Phone Number:</p>  <p>Quilt Number (first and last initial + number)</p>		<p><b>QUILT OWNER:</b></p>  <p>Phone Number:</p>  <p>Quilt Number (first and last initial + number)</p>
<p><b>QUILT OWNER:</b></p>  <p>Phone Number:</p>  <p>Quilt Number (first and last initial + number)</p>		<p><b>QUILT OWNER:</b></p>  <p>Phone Number:</p>  <p>Quilt Number (first and last initial + number)</p>

**Attach one label to each quilt you are loaning to us for the home tour. Copy this form if more labels are needed, or ask for another form.**

Pine Needles Quilt Guild

PO Box 2800  
Wrightwood, CA 92397

[www.pnqg.org](http://www.pnqg.org)



Calendar



Fall Colors are here. Taken this week in a Wrightwood front yard.

**November 10**

**Home Tour Quilt Grab Meeting**

**December 5**

**Home Tour**

**December 8**

**Christmas Party—"Dressed to the Nines"**



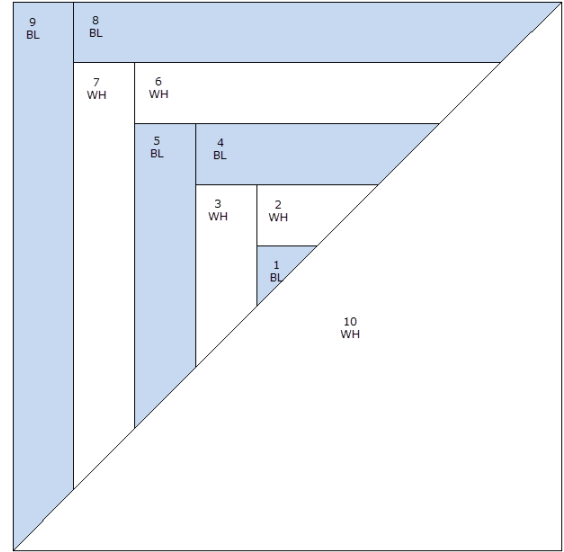
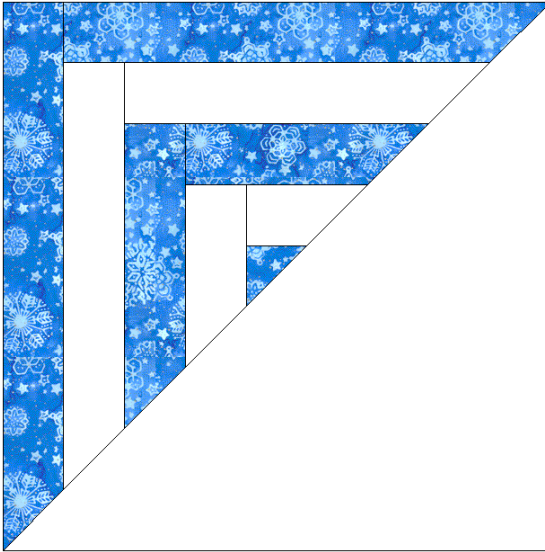
Due at **December 8** General Meeting.  
 Questions: Beth Stanton, [btstanton@yahoo.com](mailto:btstanton@yahoo.com),  
 909/379-5206

## PNQG Block of the Quarter

### Half-Square Log Cabin

Unfinished Size: 11-3/4" square

Finished Size: 11-1/4" square



#### Fabrics:

- White – White or white-on-white
- Blue – Think icy, cold blues – not tropical (turquoise) blues. Look for good contrast with the white.

Sew with 1/4" seam.

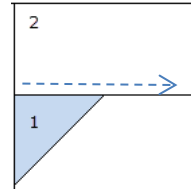
1. Use scraps, fat quarters or width of fabric. Cut the size and number of pieces as indicated below:

Fabric	Size	Quantity	Piecing Reference
Blue	2-1/8" square	1	1
	1-3/4" x 6"	1	4
	1-3/4" x 7-1/4"	1	5
	2" x 11"	1	8
	2" x 12-1/4"	1	9
	White	12-1/8" square	1
White	1-3/4" x 3-1/2"	1	2
	1-3/4" x 4-3/4"	1	3
	1-3/4" x 8-1/2"	1	6
	1-3/4" x 9-3/4"	1	7

2. Cut the 2-1/8" square along the diagonal to create (2) half square triangles. One of these is piece 1.

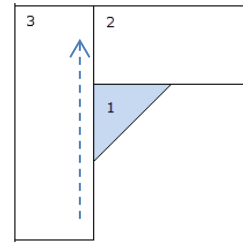
3. Cut the 12-1/8" square along the diagonal to create (2) half square triangles. After cutting, handle the pieces carefully so as not to stretch the bias edge. One of these is piece 1. Set both aside.

4. Start with one small triangle. Right sides together, sew white piece 2 to the small blue triangle, piece 1, in the direction of the arrow. Press to the white.



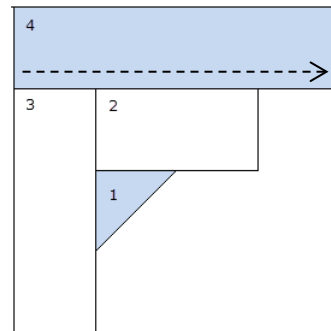
5. In each of the following steps, "braid" the pieces, set right sides together, and sew with the "new" piece on top. Sewing in the direction of the arrow should help the unit not go wonky.

6. Sew white piece 3 to the left side of the log unit in the direction of the arrow. Press to the white.

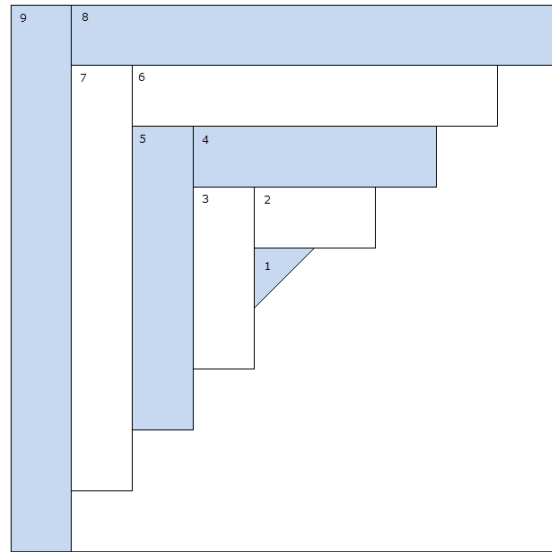


7. Sew blue piece 4 to the top of the log unit in the direction of the arrow. Press away from the triangle.

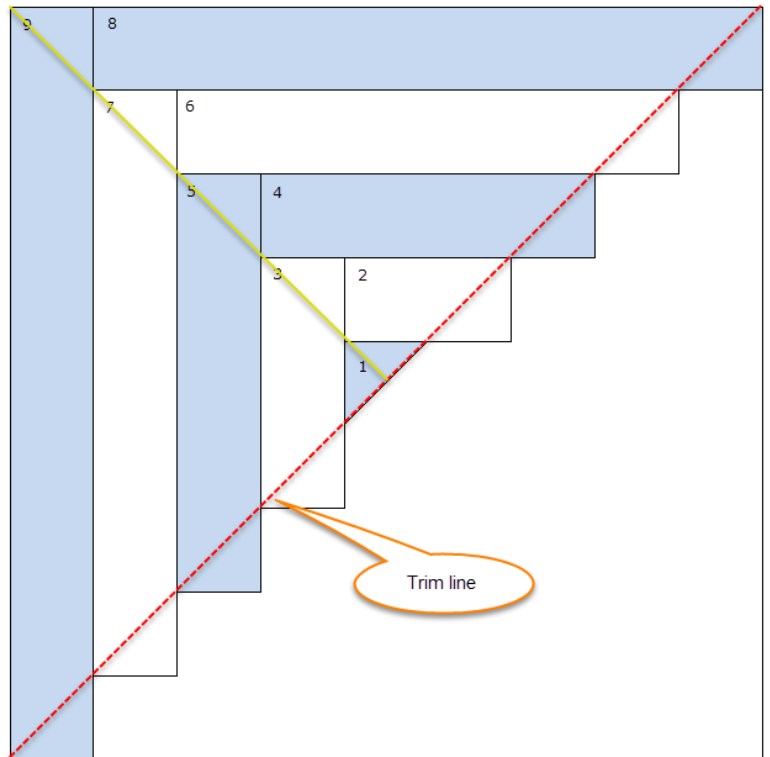
8. Sew blue piece 5 to the left side of the log unit. Sew from the bottom up. Press away from the triangle.



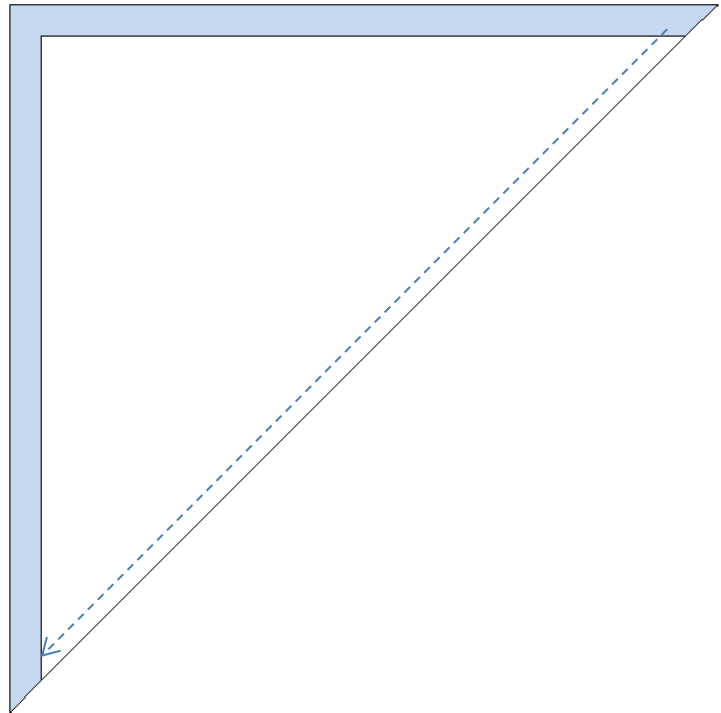
9. Repeat steps 7 & 8 with white pieces 6 and 7 and then with blue pieces 8 and 9, remembering to sew the top piece first and then the left with the “new” piece on top as you stitch. Note that pieces 8 and 9 are slightly wider than the other pieces to allow for squaring up the block later.



10. Using a long, wide ruler, align the cutting edge against the exposed bias edge of piece 1 (dotted line in diagram) and then align one ruler line diagonally from the point of each color strip to the next out to the outer corner (solid line). Trim the uneven points to make a triangle.
11. Taking care not to stretch the bias, lightly fold the triangle on the diagonal and mark the center at the seamline of the bias edge (should be the center of piece 1) with a pin or a pinch.



12. Using the large piece 10 white triangle and taking care not to stretch the bias, lightly fold on the diagonal and mark the center at the seamline with a pin or a pinch.
13. With right sides together, match the marked centers of the bias edges taking care not to stretch the fabric. Note that the braid triangle should be slightly larger than the white triangle. **DO NOT STRETCH THE WHITE TRIANGLE EDGE to match the braid triangle edge.** Pin (pinning will help to minimize stretching!!) and stitch the two pieces together. Open and press toward the white triangle.



14. Trim to 11-3/4" square. If you have a large square ruler, align the 45° line on the ruler with the long diagonal of the block to assist with the measuring and squaring up.

