



# Pine Needles Quilt Guild Dispatcher



PO Box 2800, Wrightwood, CA 92397

## April 2016

### 2016 Board

#### President

Elisa Gurley  
760-985-6917  
[elisagurley@gmail.com](mailto:elisagurley@gmail.com)

#### VP Programs

Mary Bell  
760-218-5415  
[mabell19494@yahoo.com](mailto:mabell19494@yahoo.com)  
Darlene Packard  
760-912-7947  
[doctordar@shandar.us](mailto:doctordar@shandar.us)

#### VP Membership

Carrie Harrison  
818-389-8719  
[carrieharrison@hotmail.com](mailto:carrieharrison@hotmail.com)  
Nancy Walczynski  
760-249-6882  
[nancywalczynski@gmail.com](mailto:nancywalczynski@gmail.com)

#### Secretary

Teresa Howard  
702-400-6603  
[tchoward33@gmail.com](mailto:tchoward33@gmail.com)

#### Treasurer

Beth Stanton  
760-249-9037  
[btstanton@yahoo.com](mailto:btstanton@yahoo.com)

#### Newsletter

Susan Butler  
4<sup>th</sup> Tuesday of the Month  
760-524-7262  
[bsandk01@gmail.com](mailto:bsandk01@gmail.com)

### What to Bring

- Money for Door Prize and Workshop
- Library Totes and Library Books
- Sew and Tell
- Refreshments
- Door Prize & Drawing

### President's Message

*We* have had such varied weather this past month. It has been warm and sunny, windy, snowy and finally rainy. With all of this crazy weather, I hope you have had plenty of time to be inside to sit and quilt. Enjoy your first month of spring!

Happy Quilting,  
*Elisa Gurley*  
President



### Sew and Tell





*Please note that not all photos were printable.*

## This Month's Meeting

---

*By Mary Bell*

Our guest speaker for April 12 will be Allyson Allen, from Sun City, California. Allyson will be presenting her "Quilted Pages" lecture featuring 3 dozen "Special Exhibit" quilts.

Quilting for over 20 years, master African American quilt artist, Allyson, turns quilt making into story-telling. The majority of the quilts she creates are related to American History or African American folk history and the quilts are usually story quilts. They are always original designs.

Allyson's artist statement is KUUMBA (creativity) to do always as much as we can in the way we can, in order to leave our community more beautiful and beneficial than when we inherited it.

You don't want to miss this lecture it's sure to be inspiring and informative.



Beth Stanton spoke at Meet the Teachers on Friday, April 9<sup>th</sup>

---

### April Birthdays

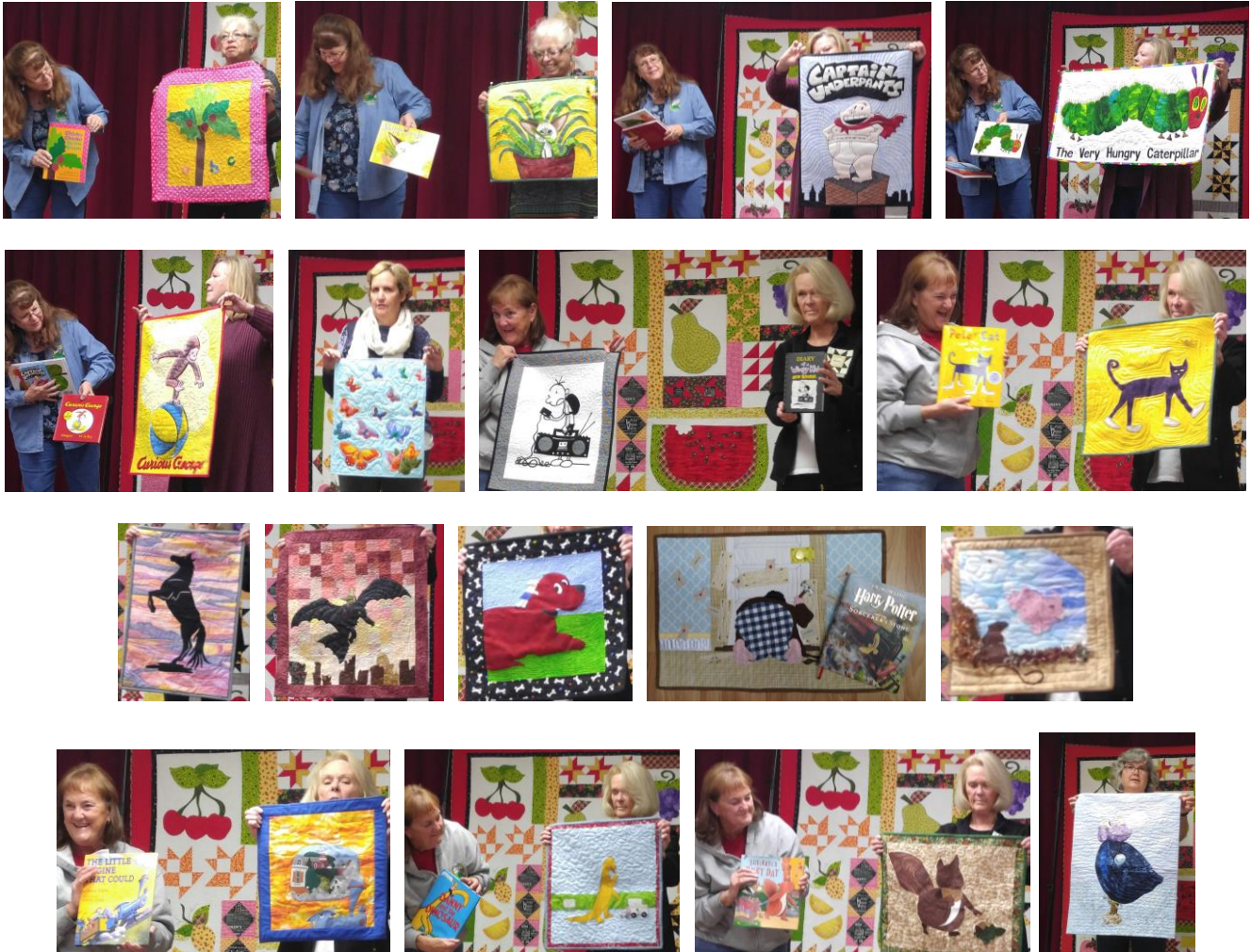
Nancy Goldstein	4-Apr
Marion Hall	22-Apr
Kathleen Flanagan	24-Apr
Sonia Beam	25-Apr
Linda Tashiro	29-Apr



## Library Project

---

Thank you for the great outpouring of quilts for the Library Quilt Project. Most of them are shown here.



## ANNOUNCEMENTS

---

- **San Bernardino County Fair**

San Bernardino County Fair Entry forms must be in by April 15. Entries can be submitted online at [SBCFair.com](http://SBCFair.com). Click on the 2016 SBC Fair/ Exhibits for the online form. Also, Christy Close will be bringing a stack of Fair Books from Jonita Terrell, SBCF Home Arts Chair

- **Membership**

If you haven't paid for your annual membership dues, then they are late and are now \$40. New members are still \$30. Dues are used for speakers, room rental for meetings and workshops, meeting supplies, and other expenses. A blank membership form is available on the guild's website on the "Member Information" page <http://pnqg.org/members.html>.

- **Block of the Quarter**

The Scrappy Diagonal Block-of-the-quarter is due at the April 12 meeting and the winner or winners will be drawn. In general, block-of-the-quarter guidelines are as follows:

- You will earn one raffle ticket for each block made and turned in. Make as many as you like.
- Blocks are due by the date specified - you will not earn raffle tickets for late blocks.
- The drawing for the blocks will usually take place on the night they are due.
- There may be multiple winners depending on the number of blocks turned in.



- **Christmas Quilt Squares**

Christy Close will be bringing the remaining Christmas Quilt Square packets for members to make and earn chances for this year's "member's only" quilt. There are only 13 packets left available. Members who turn in their finished block by June will receive double chances for the finished quilt at the Christmas Pot.

- **Board Meetings**

Board meetings are on the fourth Wednesday of the month at 5:30 pm, at the Pizza Factory, Phelan, in the small meeting room. Anyone can attend.

## **PROGRAMS and WORKSHOPS**

---

- |                                            |                                                                                                                                                                            |                                                                                                                                                                                                                   |
|--------------------------------------------|----------------------------------------------------------------------------------------------------------------------------------------------------------------------------|-------------------------------------------------------------------------------------------------------------------------------------------------------------------------------------------------------------------|
| <u>April 12</u>                            | Lecture Trunk Show, by Allyson Allen "Quilted Pages"<br><a href="http://www.kuumba421.wixcom/quilts421">www.kuumba421.wixcom/quilts421</a>                                 | A wooden quilt rack with a light-colored finish. It has a flat top surface where a quilt is laid out. The quilt is partially visible, showing a pattern of squares. The rack has four legs and a central support. |
| <u>May 10</u><br><u>May 14</u>             | Lecture: Claudia Dallas Gomez "Color Story"<br>Workshop: Claudia Gomez: "The French Door" (Modern Quilt), <a href="http://www.devotedtcolor.com">www.devotedtcolor.com</a> |                                                                                                                                                                                                                   |
| <u>June 14</u><br><u>June 15</u>           | Lecture: Cindi Brick "The Incredible Crazy Quilt"<br>Workshop: Crazy Quilting /Embellishment, <a href="http://www.cindybrick.com">www.cindybrick.com</a>                   |                                                                                                                                                                                                                   |
| <u>July 12</u>                             | Picnic at Wrightwood Country Club                                                                                                                                          |                                                                                                                                                                                                                   |
| <u>August 9</u>                            | Lecture/Trunk show Grace Errea "Value of Value", <a href="http://www.Amazingquiltsbygrace.com">www.Amazingquiltsbygrace.com</a>                                            |                                                                                                                                                                                                                   |
| <u>September 13</u><br><u>September 14</u> | Lecture; Carrie Fondi "History of The Hawaiian Quilt"<br>Workshop: Traditional Hawaiian Quilt                                                                              |                                                                                                                                                                                                                   |

Highlights from last month's,  
"How Do I Quilt That Quilt?"



**Quilts of Valor**

---





## CHAIR POSITIONS

---

*This information is available on our website: [www.pnqg.org](http://www.pnqg.org)*

**Block of the Quarter:** Beth Stanton

**Christmas Quilt:** Christy Close and Alice Smith

**Facebook Page:** Teresa Howard

**Home Tour:** Carol Gaines (co-chair *\*open\**)

**Home Tour Boutique:** Fran Ouimette

**Hospitality:** Kandi Harrower

**Internal Auditor:** Rose Burcher

**Librarian:** Darlene Packard

**Mini Quilt Auction:** Kandi Harrow (co-chair *\*open\**)

**Mystery Quilt:** Rose Burcher

**Newsletter:** Susan Butler

**Opportunity Quilt:** *\*open\**

**Parliamentarian:** Carol Gaines

**Publicity:** Alice Smith

**Raffle Queen:** Marion Hall

**SCCQG:** Beth Stanton

**Sunshine:** Alice Smith

**Webmaster:** Beth Stanton

Call or email Elisa if you are interested in one of the open positions.

