



# PINE NEEDLES QUILT GUILD DISPATCHER



## June 2017

### **2017 Board**

#### **Co-Presidents**

Mary Bell  
760-218-5415  
[mabell19494@yahoo.com](mailto:mabell19494@yahoo.com)  
Darlene Packard  
760-912-7947  
[doctordar@shandar.us](mailto:doctordar@shandar.us)

#### **VP Programs**

Elisa Gurley  
760-985-6917  
[elisagurley@gmail.com](mailto:elisagurley@gmail.com)  
Carol Gaines  
909-559-0099  
[gainesmth@yahoo.com](mailto:gainesmth@yahoo.com)

#### **VP Membership**

Carrie Harrison  
818-389-8719  
[carrieharrison@hotmail.com](mailto:carrieharrison@hotmail.com)  
Nancy Walczynski  
760-249-6882  
[nancywalczynski@gmail.com](mailto:nancywalczynski@gmail.com)

#### **Secretary**

Teresa Howard  
702-400-6603  
[tchoward33@gmail.com](mailto:tchoward33@gmail.com)

#### **Treasurer**

Beth Stanton  
760-249-9037  
[btstanton@yahoo.com](mailto:btstanton@yahoo.com)

#### **Newsletter**

3<sup>rd</sup> Tuesday of the Month  
Teresa Howard  
702-400-6603  
[tchoward33@gmail.com](mailto:tchoward33@gmail.com)  
Susan Butler  
760-524-7262  
[bsandk01@gmail.com](mailto:bsandk01@gmail.com)

## **President's Message**

*A*s always, our guild members came home with lots of ribbons from the San Bernardino County Fair this year. Such amazing talent we have in our little guild!

Summer is right around the corner and for us that means

completing those quilts for the Mini Quit Auction. I'm sure looking forward to seeing your creations at the June guild meeting.

The Home Tour committee has been busy preparing for our end of the year event that will be here before we blink!

The Charity Sew is coming up June 3 at the Community Center. We have lots of fabric, so bring your machines and supplies and let's whip up some tops to give to the needy and for our Mini Quilt Auction. Bring patterns for wall quilts and/or lap quilts, so we have lots of options and choices for making some stunning tops. Don't forget our two President's Challenges! Let's share our love of quilting with others and bring them to our guild meetings. Quilters in general, but certainly those in our guild, are filled with compassion, generosity, and the spirit of giving. I want to personally thank each and every one of you for the dedication and passion you bring to Pine Needles Quilt Guild. Your presence at meetings and your behind the scenes efforts are appreciated and are to be applauded!

*Hugs and stitches!*

*Darlene,*  
PNQG Co-President



PNQG Co-Presidents  
Darlene Packard & Mary Bell

## This Month's Meeting

---

From Carol Gaines and Elisa Gurley, Programs

Grace Errea will lecture and give a Wednesday June 14 workshop. The lecture will be "Stroll Down Memory Lane." There are still spaces available. Contact Carol Gaines at [909 559-0099](tel:9095590099) to sign up. Grace will bring kits (cost is \$20) which includes the pattern and heat-set product used in her appliqué method. Go to [www.amazingquiltsbygrace.com](http://www.amazingquiltsbygrace.com) to get the supply list and to see the patterns. Choose one of three patterns: Belladonna Trumpet, Blooming Iris, or Coneflowers in the Pink. Look for the picture on the pattern page. *Class description and supply list is at the end of this newsletter.*

The July meeting is the Annual Potluck Picnic. Please start planning the dish that you will bring. The August meeting will have a workshop by Lauretta Crites. Carol will bring a sample and sign-up sheet at the next meeting.

---

### PNQG Charity Sew

Saturday, June 3

9am - 4pm

Wrightwood Community Building

Bring your sewing machine and whatever tools and supplies you need to cut, sew and quilt. Fabric and some batting for charity quilts will be available. Bring a bag lunch to optimize sewing time and, if you'd like to bring goodies to share, this would much appreciated by all!

Hope to see you there.



### Important Mini Quilt Auction Update

We had a last minute change of plans regarding the Auction Quilt Prep & Pizza Party. It will now be on Saturday, June 23<sup>rd</sup> at 5:30 pm. Carol Gaines has graciously taken over the venue for

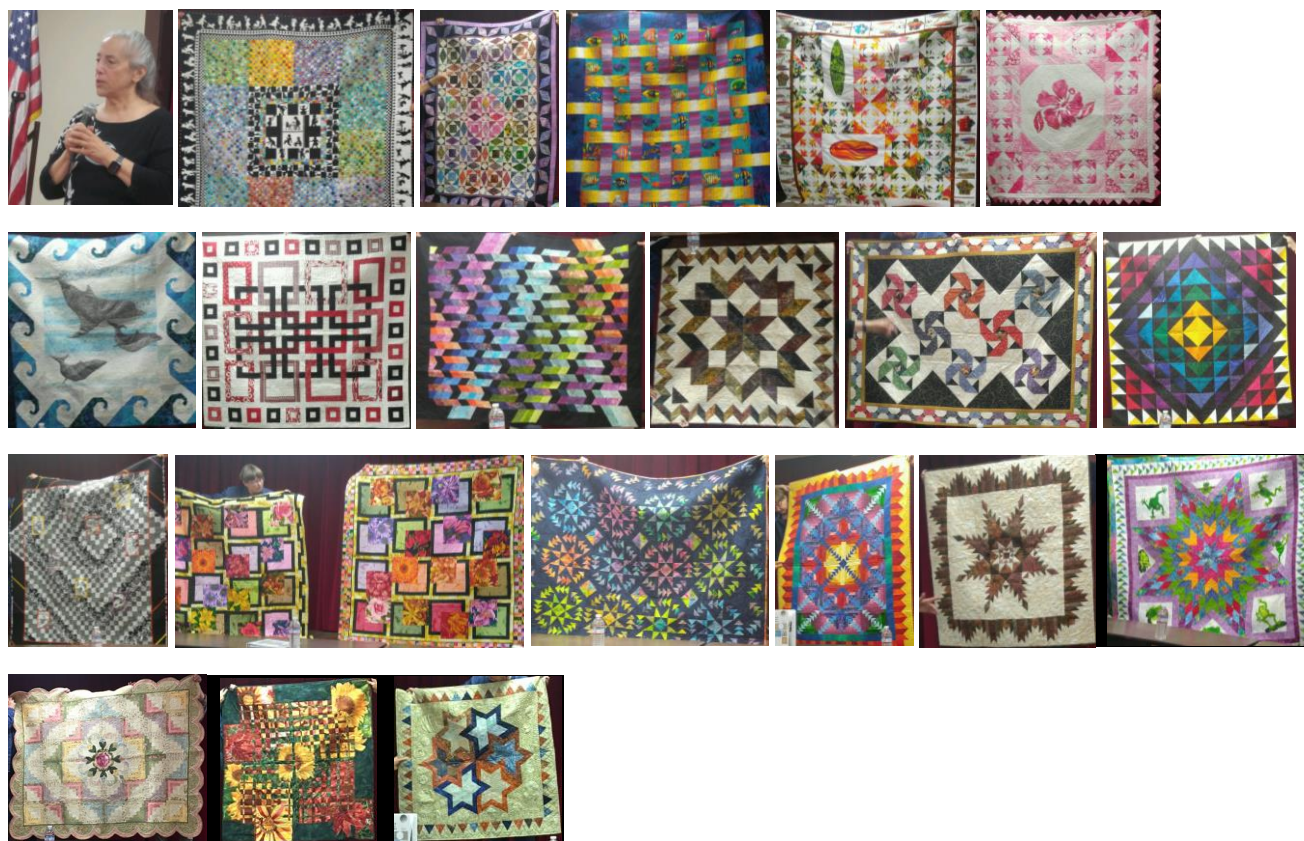
Darlene. Carols' cabin is located at 1321 Helen St. in Wrightwood, near Mtn Mike's [Mile High] Pizza. Ladies, we are at the deadline for turning in Auction Quilts. Please bring your Auction Quilts to our June 13<sup>th</sup> general meeting or the Pizza Party on the 23<sup>rd</sup> . If you just can't make it to either of these events you may turn it in to Elisa Gurley or Kandi Harrower not later than Friday, June 30<sup>th</sup> . The auction is on July 8<sup>th</sup> this year. If you have not signed up to work, please help us out by scheduling a time with Kandi 760-868-1096 or 760-680-5950. The day of auction worker sign-up sheet will be at the general meeting as well. A brief reminder to everyone that we need your names on the quilt, so you can be credited with your beautiful work, as well as any details regarding the design and construction of your beautiful creations.

Thanks, Kandi

## Last Month's Meeting

---

"Beyond Boring Borders", by Lujean Seagal



## QUILTS of VALOR

---

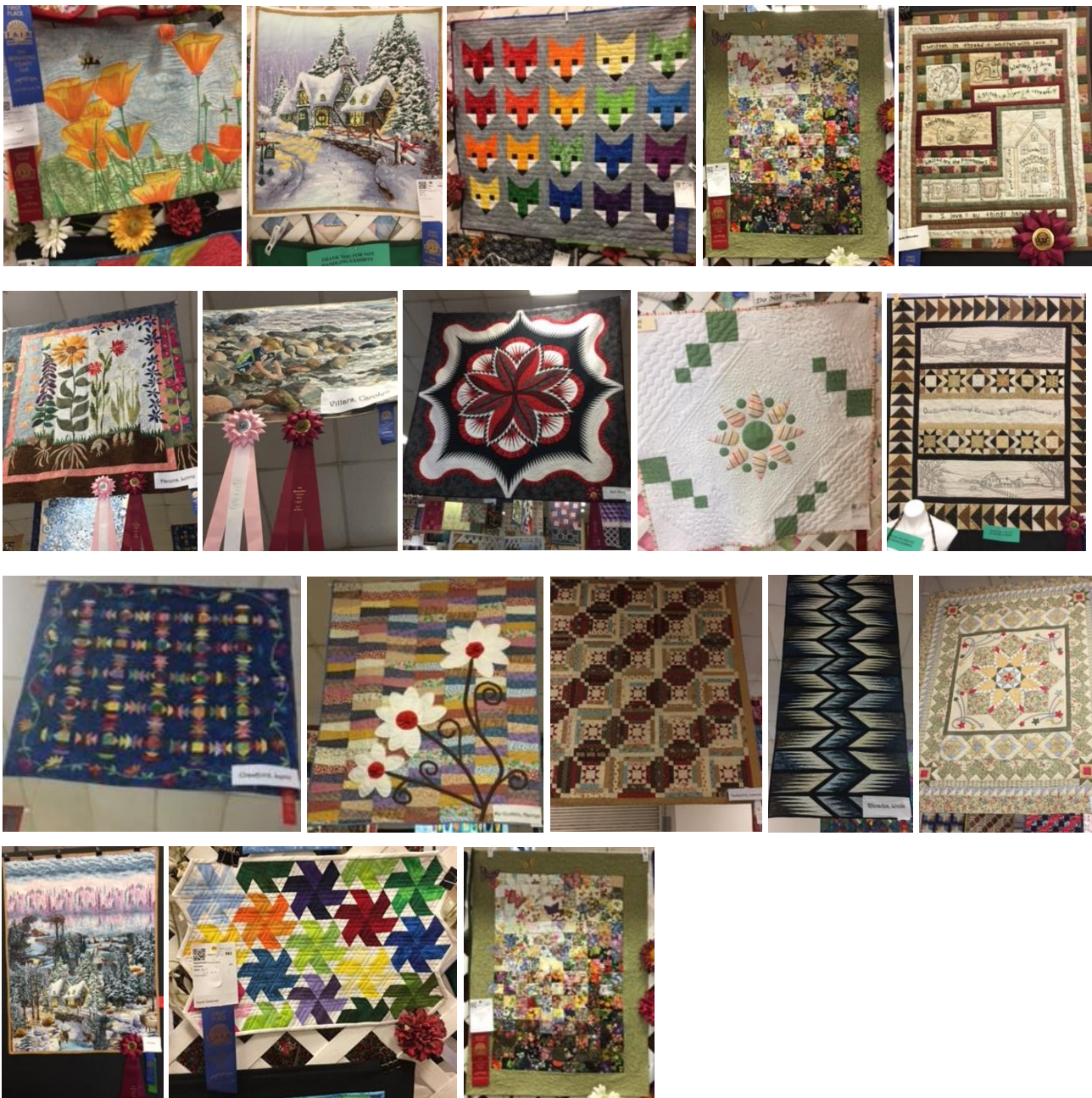


# SEW & TELL



# Seen at the County Fair





## FUTURE MEETINGS/PROGRAMS and WORKSHOPS

- June 3... Charity Sewing, 9-4 at Community Center
- June 13... Lecture/Trunk Show ... "Just Stroll Down Memory Lane" by Grace Errea.
  - June 14 ... **Workshop** ... 9-4, "Introduction to Heat Set Appliqué" By Grace Errea, [www.amazingquiltsbygrace.com](http://www.amazingquiltsbygrace.com)
- June 23 ... Mini Quilt "Margareta" Party ... 5:30 pm at Carol Gaines' Cabin

- August 8 ... Lecture / Trunk Show ... "Create! 7 Keys To Unlocking Your Creative Power" by Laretta Crites
    - August 12 ... **Workshop** ... (to be determined) by Laretta Crites, [Laurettacrites.com](http://Laurettacrites.com)
  - September 12 ... Lecture/Trunk Show ... "x-Blocks" by Patricia Pepe"
    - September 13 ... **Workshop** ... "X-Block", [xblocks.com](http://xblocks.com)
- 



Pine Needles Quilt Guild  
PO Box 2800, Wrightwood, CA 9239



## **June 14<sup>th</sup> Workshop**

### **Introduction to Value Based “Heat-Set” Machine Applique**

#### **Description**

**Grace J. Errea – [www.amazingquiltsbygrace.com](http://www.amazingquiltsbygrace.com)**

In this class you will create an art quilt top with the use of fabrics as an expressive medium.

You will use one of your choices from suggested teacher's patterns and will learn how to create templates out of freezer paper, and then use these to create a stunning Art Quilt. With guidance, you will choose fabrics in the correct colors and values to get the right results. In addition you will be introduced to the “Heat-Set” Machine Applique technique.

The "**Heat-Set**" **appliqué** technique is easy, foolproof and brand new. It is so totally new and revolutionary, you will use nothing else once you try it. Grace will introduce the product and the technique to use it. Forget fusible webs (Steam-a-Seam 2, Wonder Under) or glues. Forget millions of pins and nylon thread stitching. This amazing and foolproof technique is very easy to use and it leaves the end result (the quilt and the fabric) soft and manageable.

Another great benefit is that you can do "raw edge" appliqué and not fight with all those ugly fraying edges! Finally "**No-fray raw edge appliqué**".

The teacher will provide a kit with your pattern and the "Heat-Set" product.

**Introduction to Value Based “Heat-Set” Machine Applique**

Quilting will be demonstrated but no sewing machine is required in this 1-2 Day class.

This class will require a kit provided by the teacher containing the pattern of your choice to learn the technique, the "Heat-Set" product used in the technique.

Kit price: \$20.00

### **Fabrics:**

You will be able to choose any pattern you like. Use the colors I used, or choose your own colors. Bring lots of fabric scraps in **many values**. From lightest light to darkest darks. Fabric scraps can be any sizes from small pieces to quarter yards.

Some patterns (as the Frog and Hen and Chicks) the background is created in the same manner as the focal point. Other patterns, as in Tigger, need a whole cloth background. Verify the quilt size as documented on the web, but most quilts do not exceed 24" x 30". For these, choose fabrics that do not have a distinctive pattern and are light in value for dark focal points, or dark in value for light focal points. For Landscapes, be aware of directional fabrics for sky and water.

### **Other Supplies:**

- Board – 30" x 40" Insulation Board (usually 1 1/4" thick). You can get it at Home Depot, Lowe's or any building supply store.
- Brush – soft, 1/4" wide
- Craft knife such as Xacto (optional)
- Freezer paper roll - 18" wide
- Iron
- Paper, lots of scrap paper. Can be newspaper, paper bags or any scrap paper you have. Or paper towels.
- Pens–Sharpie permanent markers **Fine** point, one black and one red, and ballpoint (not **Extra Fine**)
- Pencils – Prismacolor drawing pencils- green and red
- Pins- "Extra Thin" Silk Pins 1"
- Pressing Cloth for appliqué, any size but the larger the better, or NON-STICK Aluminum Foil
- Scissors – fabric, paper
- Tape –painter's multiuse or masking
- Tweezers – long handled
- Vinyl- clear such as a painter's drop cloth or clear vinyl table covering – 2 Mil. Approximately 30" x 40".