



**JORDAN SPIETH**

// MAJOR CHAMPION





## SMARTER TRACTION



### ▼ SPIKED

New UA S3 spikes, built in partnership with MacNeill Engineering & world renowned golf biomechanist, provide game-changing directional traction

### ▼ SPIKELESS

Hybrid TPU + rubber outsole:

TPU insert for ground penetration & torsional rigidity + rubber for ground friction, comfort, and flexibility

## DUAL-FOAM CUSHIONING



### ▼

Softer energy-returning UA HOVR™ foam on inside (blue) + more supportive Charged Cushioning® on outside (white) supports & guides the natural motion of the foot in a golf swing

## LOCKDOWN LACING



### ▼

The Swing Support Strap combines with reinforcement in the upper to provide optimized 360° lock-in from lateral ball to medial instep

Lockdown where you need it + mobility where you want it



**UNDER ARMOUR**

# GRAND SLAM

## UA DRIVE PRO SERIES

**THE FIRST CHOICE OF EDITORS**

UA\_GOLF

**MYGOLFSPY**

## UNDER ARMOUR DRIVE PRO: PRIMED TO PERFORM

**MYGOLFSPY MOST WANTED**

**PROS**

- Under Armour's most comfortable shoe to date
- Impressive technology is instantly noticeable
- Categorically proven to improve your game

**CONS**

- We'll let you know when we find one

## Best Spikeless Golf Shoe

**BUYERS GUIDE**

**GOLF**

**bunkered**

**RATING ★★★★★**

**Average carry**

Current shoes: 307 yards  
UA Drive Pro: 325 yards  
UA Drive Pro SL: 338 yards

**Average club speed**

Current shoes: 130mph  
UA Drive Pro: 134mph  
UA Drive Pro SL: 137mph



"We even put our neck on the line at PGA Show Demo Day, where we were the only footwear brand present, and the 55 Demo Day testers added an average of 11 yards, 3.9mph club speed, and 4.5mph ball speed versus their current shoes. Truly embodying UA's brand mission – to make athletes better." Haley said.



# DRIVE PRO | NEW COLOR



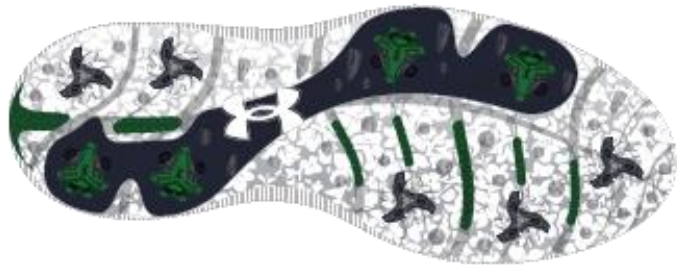
+102 WHITE/GOLD/DOWNPOUR  
(REG 3026920-102 & WIDE 3026921-102)



(1/20 SSD 2/20 INTRO)

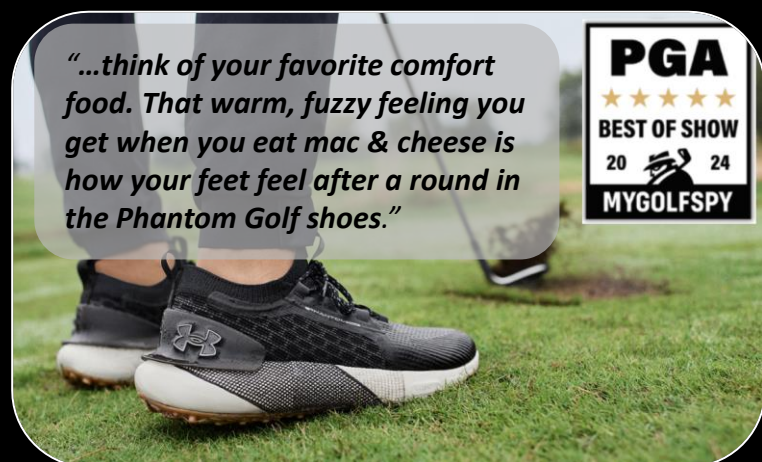
UNDER ARMOUR

# DRIVE PRO SOUVENIR



# PHANTOM FORE

## SS24 PHANTOM GOLF



## SS25 PHANTOM FORE



1. **HOVR+ FOAM:** UPDATING FROM HOVR TO HOVR+ SUPER CRITICAL PEBAX FOAM FOR ULTIMATE COMFORT
2. **TRACTION:** IMPROVED TRACTION SYSTEM, LUG LENGTH & DURABILITY
3. **FULLY COATED VAMP:** FULLY COATED VAMP & QUARTER FOR IMPROVED WATERPROOFING AND CLEANABILITY

*\*WITH \$10 REDUCTION IN MSRP*



# PHANTOM FORE

## HOVR+ SUPER CRITICAL



- Supercritical HOVR+ Foam for extreme comfort walking the course

## STORMPROOF KNIT UPPER



- Waterproof membrane with NeverWet™ treated knit tongue & collar
- Thin & soft TPU coated vamp

## HIGH-TRACTION OUTSOLE



- High-abrasion rubber golf outsole with rotational resistant traction

# SURGE GOLF



## COMP SET

(NPD TOP 4 2023)



\$85 NIKE ROSHE G



\$70 ADIDAS TECH RESPONSE



\$100 ADIDAS S2G SL



\$100 FOOTJOY FLEX



# SURGE GOLF

## PRICE-TO-VALUE



- Incredible value at \$75, with UA's COMFORT DELUXE SYSTEM & sustainable materials

## SUPPORT & WATER-RESISTANCE



- Water resistant textile with NeverWet™ treatment and strategic reinforcement to support the golf swing

## HIGH-TRACTION OUTSOLE



- High-abrasion rubber golf outsole with directional traction

# CURRY 1 GOLF (C/O)

