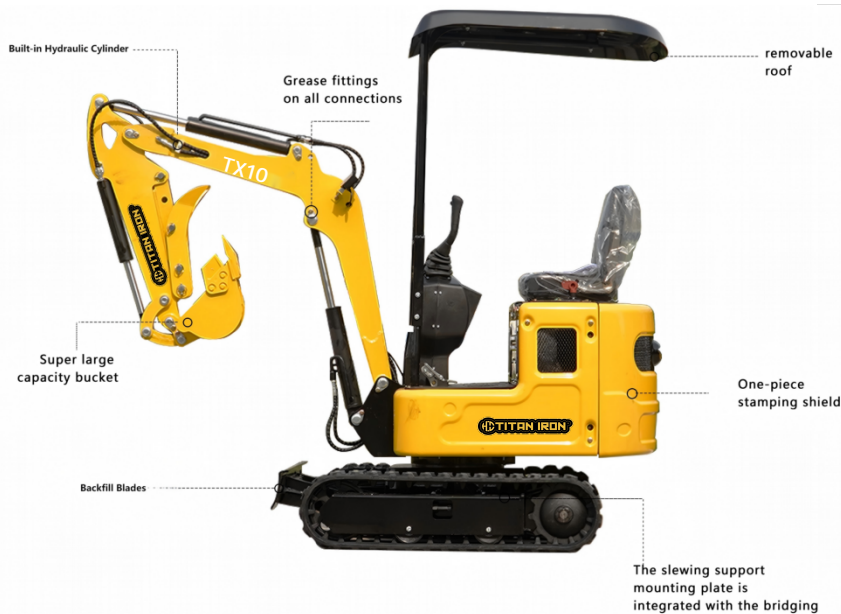




## PRODUCT CHARACTERISTICS



### Water-cooled Kubota D722 Engine

At the heart of the Titan TX10 is a reliable, fuel-efficient Kubota D722 engine.

Designed for powerful performance with minimal environmental impact, it meets EPA4 standards. The engine delivers low noise and low emissions, ensuring a quiet, operator-friendly experience on every job.



### Backfill Blades

The Titan TX10 comes equipped with a powerful backfill blades featuring a built-in hydraulic cylinder. Engineered for precision and stability, it's ideal for grading, leveling, and pushing material across challenging terrain — offering Titan-level performance with every pass.



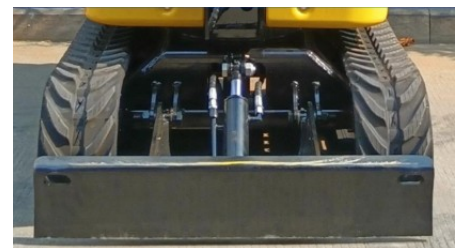
### LED LIGHTS

High-intensity LED work lights provide superior visibility for safer operation in low-light conditions.



### Reinforced Chassis

The slewing support mounting plate is integrated with the bridge frame to increase the use strength and simplify the welding process.



### Built-in Cylinder

Titan's innovative boom design integrates the hydraulic cylinder directly within the structure. This protected placement shields key components from damage in rugged conditions, while streamlining the machine's appearance and improving long-term durability with less maintenance.



# Machine Parameters

## TX10

|                      |                                    |                       |
|----------------------|------------------------------------|-----------------------|
| Key Specification    | Operating Weight(lbs)              | 2200                  |
|                      | Bucket Capacity(ft.3)              | 0.49                  |
|                      | Travel Speed low/high speed(mph)   | 0-0.93                |
|                      | Grade ability (%)                  | 30%                   |
|                      | Ground pressure (Psi)              | 3.7                   |
|                      | Maximum Digging Force(lbf)         | 2068                  |
|                      | Maximum Digging Radius (in)        | 127                   |
|                      | Maximum Digging Depth (in)         | 72                    |
|                      | Maximum Digging Height (in)        | 118                   |
|                      | Maximum Unloading Height (in)      | 88                    |
| Engine & Performance | Engine Brand                       | KUBOTA                |
|                      | Engine Model                       | D722                  |
|                      | Maximum Horsepower (hp)            | 11                    |
|                      | Maximum Power (Kw)                 | 10.2                  |
|                      | Maximum Speed (rpm)                | 2500                  |
|                      | Displacement (gal)                 | 0.19                  |
|                      | Numbers Of Cylinders               | 3                     |
|                      | Cooling Method                     | Water Cooling         |
|                      | Engine Oil Change Amount (gal)     | 0.9                   |
|                      | Fuel Form                          | Diesel                |
|                      | Fuel Grade                         | 0/-10                 |
|                      | Theoretical Fuel Consumption (L/H) | 1.1-1.5               |
| Dimension            | Transport Length (in)              | 95                    |
|                      | Transport Width (in)               | 35                    |
|                      | Transport Height (in)              | 86                    |
|                      | Bucket Width (in)                  | 11.8                  |
|                      | Boom Length (in)                   | 58.1                  |
|                      | Stick Length (in)                  | 31.5                  |
|                      | Backfill Blades Width (in)         | 35                    |
| Hydraulic System     | Main Pump Type/Model               | Gear Pump / 306       |
|                      | Main Pump Brand                    | TianJin Walking       |
|                      | Main Pump Maximum Flow (GPM)       | 4.76                  |
|                      | Multi-Way Valve                    | 2+2+5 Multi-way Valve |
|                      | Rate Set Pressure (psi)            | 2466                  |
|                      | Maximum Set Pressure (psi)         | 2611                  |
|                      | Travel Hydraulic Motor Type        | WDM-300               |
|                      | Displacement                       | 315ml/r               |