



## PRODUCT CHARACTERISTICS

Built-in hydraulic Cylinder



### KUBOTA ENGINE

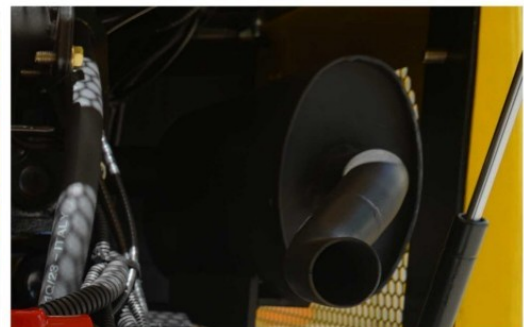
Powerful performance in a compact design. The excellent performance brought by the extra torque greatly contributes to the improvement of work ability. At the same time, low fuel consumption, low vibration, low noise, and consideration for the environment have been achieved at a high level.



Hydraulic Oil Filter Element



Hydraulic Cylinder



Elliptical Silencer



Dashboard



Retractable Track



Enhanced Wheel Support

# Machine Parameters

## TX15

Key Specifications	Operating Weight(lbs)	3000
	Bucket Capacity(ft.3)	1.4
	Travel Speed low/high speed(mph)	0-0.93
	Grade ability (%)	30%
	Ground pressure (Psi)	4.6
	Maximum Digging Force(lbf)	2338
	Maximum Digging Radius (in)	127
	Maximum Digging Depth (in)	70
	Maximum Digging Height (in)	117
	Maximum Unloading Height (in)	80
Engine & Performance	Engine Brand	KUBOTA
	Engine Model	D722
	Maximum Horsepower (hp)	13.7
	Maximum Power (Kw)	10.2
	Maximum Speed (rpm)	2500
	Displacement (gal)	0.19
	Numbers Of Cylinders	3
	Cooling Method	Water Cooling
	Engine Oil Change Amount (gal)	0.9
	Fuel Form	Diesel
	Fuel Grade	0/-10
	Theoretical Fuel Consumption (L/H)	1.1-1.5
Dimension	Transport Length (in)	91
	Transport Width (in)	37
	Transport Height (in)	88.3
	Bucket Width (in)	15.7
	Boom Length (in)	58.1
	Stick Length (in)	31.5
	Backfill Blades Width (in)	41
Hydraulic System	Main Pump Type/Model	Gear Pump / 310
	Main Pump Brand	TianJin Walking
	Main Pump Maximum Flow (GPM)	6
	Multi-Way Valve	8-Way Pilot Valve
	Rate Set Pressure (psi)	2611
	Maximum Set Pressure (psi)	2900
	Travel Hydraulic Motor Type	BM6-315
	Displacement	315ml/r