

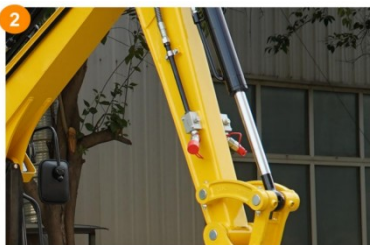


## PRODUCT CHARACTERISTICS



### KUBOTA ENGINE

While ensuring power output of the engine, energy saving and environmental protection can be achieved. Comply with EPA4 standards. Low noise, low emissions, no impact on people and the environment.



Titan's cab offers a wide, unobstructed sight line in all directions, enhancing safety and awareness on the job site. It can also be equipped with air conditioning, providing a comfortable and operator-friendly working environment.

The breaker stop valve is designed to effectively prevent hydraulic oil leakage in the event of a damaged hose during breaker installation, ensuring safer operation and easier maintenance.

The addition of an air pre-filter enhances filtration efficiency, promoting more complete fuel combustion and improved fuel economy. The flip-up rear engine cover offers streamlined access to internal components, significantly reducing service time and improving maintenance efficiency.

The double-layer Backfill Blades has a longer service life.

Machine Parameters

TX35

Key Specification	Operating Weight(lbs)	7000
	Bucket Capacity(ft.3)	3.53
	Travel Speed low/high speed(mph)	0-0.99
	Grade ability (%)	30%
	Ground pressure (Psi)	4.9
	Bucket Maximum Digging Force(lbs)	10582
	Maximum Digging Radius (in)	177
	Maximum Digging Depth (in)	90
	Maximum Digging Height (in)	146
	Maximum Unloading Height (in)	105
Engine & Performance	Engine Brand	KUBOTA
	Engine Model	V1505
	Maximum Horsepower (hp)	24.4
	Maximum Power (Kw)	18.2
	Maximum Speed (rpm)	2300
	Displacement (gal)	0.39
	Numbers Of Cylinders	4
	Cooling Method	Water Cooling+Hydraulic Shaft
	Engine Oil Change Amount (gal)	1.05
	Fuel Form	Diesel
	Fuel Grade	0/-10
	Theoretical Fuel Consumption (L/H)	1.5-1.8
Dimension	Transport Length (in)	137
	Transport Width (in)	53
	Transport Height (in)	92.7
	Bucket Width (in)	15.7
	Boom Length (in)	87.4
	Stick Length (in)	63.7
	Backfill Blades Width (in)	53.1
Hydraulic System	Main Pump Type/Model	Gear Pump/TFA10VS
	Main Pump Brand	TaiFeng
	Main Pump Maximum Flow (GPM)	16.7
	Multi-Way Valve	8 Hydraulic Control Multi-Way Valve
	Rate Set Pressure (psi)	2610
	Maximum Set Pressure (psi)	2900
	Travel Hydraulic Motor Type	BWV-1000WCD
	Displacement(CC)	245