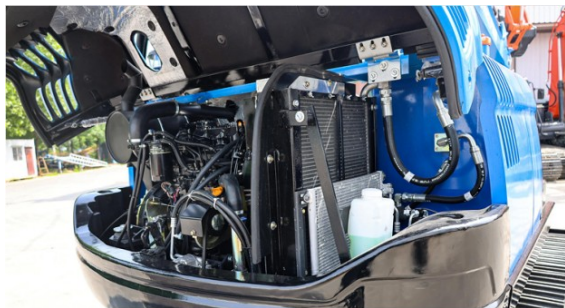




All Around Versatility and Improved Fuel Efficiency



More Durability Less Maintenance

The **TX90** excavator from **Titan Iron** is built with the most advanced technology developed by HD Iron, delivering powerful performance with simplified maintenance. Designed with the operator in mind, the **TX90** offers easy-access maintenance checkpoints for greater convenience and reduced downtime.

Best-in-Class Maintenance Access

Maintenance Made Simple

The **Titan Iron TX90** is engineered for easy upkeep, minimizing downtime and maximizing efficiency in the field. Every maintenance point is designed for quick access—so you can spend less time servicing and more time working.

AIR Battery Cut-Off Switch

Quickly disconnect the battery during long-term storage for safety and convenience.

Hour Meter Display

The hour meter is visible from ground level, allowing for easy monitoring and maintenance scheduling without opening panels.

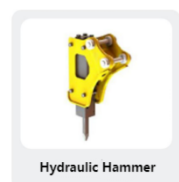
Air Filter

Blocks dust, sand, and airborne debris from entering the engine. This protects internal components, reduces wear, and extends engine life.

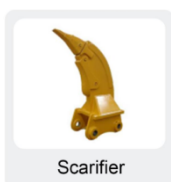
Oil Gauge

The hydraulic oil level can be quickly checked via the side-mounted gauge on the hydraulic tank—no tools required.

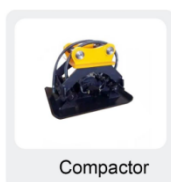
ASSISTIVE DEVICES



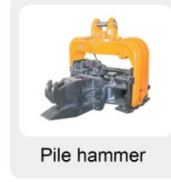
Hydraulic Hammer



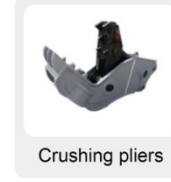
Scarifier



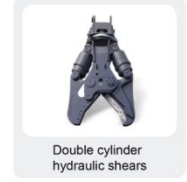
Compactor



Pile hammer



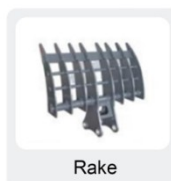
Crushing pliers



Double cylinder hydraulic shears



Strengthen rock bucket



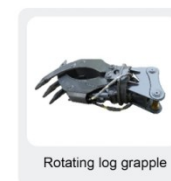
Rake



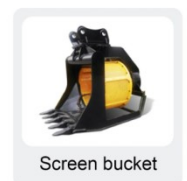
Hawkbill scissors



Single cylinder crushing shear



Rotating log grapple



Screen bucket

Machine Parameters

TX90

Key Specifications	Operating Weight(lbs)	18000
	Bucket Capacity(ft.3)	9.5-1.7
	Travel Speed low/high speed(mph)	1.6-2.7
	Bucket Digging Force (lbf)	12814
	Arm Digging Force (lbf)	8768
	Tail Turning Radius(in)	70.9
	Minimum Ground Clearance(in)	14.4
	Maximum Digging Depth (in)	137.9
	Maximum Digging Height (in)	250.9
	Maximum Unloading Height (in)	207
Engine & Performance	Engine Brand	YANMAR
	Engine Model	4TNV98L
	Maximum Horsepower (hp)	60.3
	Maximum Power (Kw)	64.3
	Maximum Speed (rpm)	2100
	Displacement (gal)	0.88
	Numbers Of Cylinders	4
	Cooling Method	Water Cooling
	Engine Oil Change Amount (gal)	1.8
	Fuel Form	Diesel
	Fuel Grade	0/-10
	Theoretical Fuel Consumption (L/H)	10.1
Dimension	Transport Length (in)	242
	Transport Width (in)	88.3
	Transport Height (in)	104.8
	Bucket Width (in)	23.6
	Boom Length (in)	146.5
	Stick Length (in)	65.8
	Backfill Blades Width (in)	86.7
Hydraulic System	Main Pump Type/Model	HYTEK
	Main Pump Brand	HYTEK
	Main Pump Maximum Flow (GPM)	44.9
	Multi-Way Valve	8-Way Hydraulic Multi-Way Valve
	Rate Set Pressure (psi)	3263.3
	Maximum Set Pressure (psi)	3625.5
	Travel Hydraulic Motor Type	TM07
	Displacement (CC)	43.2