

***luna*IP**

Intelligent intercom systems



Products and solutions

■ Video door surveillance protects people and buildings

See visitors before you open your door

Video door entry systems have become indispensable in the security concepts of residential and commercial buildings.

A modern door intercom not only visually enhances your property, but can also help to protect against intruders and unpleasant people.

Cameras replace the traditional peephole and transfer your visitor's image directly to small displays, smartphones or tablets.

Video surveillance and door station – all in one

The sabotage-proof outdoor station is made of stainless steel and available as a surface-mounted or flush-mounted version.

High-quality HD cameras and speakers / microphones ensure excellent audio / video transmission. An additional LED ensures the necessary illumination at night. In the 7" touch screen indoor monitor microphone and speakers are integrated.

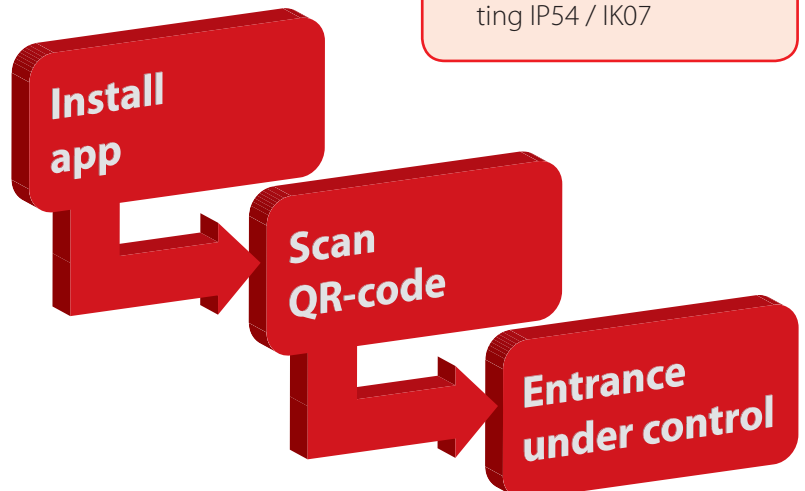
An optional memory card allows to record images and messages. For a panoramic view further lunaIP cameras can be registered.



Features

- 1.3 MP CMOS camera wide angle
- Stainless steel housing, vandalism protection
- Supports multiple indoor monitors
- Internal intercom communication
- Audio and video messages
- Group call function
- Smartphone app
- Remote controlled door opening
- Surface and flush mounting IP54 / IK07

Mobile in just 3 steps...



■ Door stations and monitors

Surface and flush mounting

From single-family homes to large operating buildings with up to 20 door stations and 100 indoor monitors, the most diverse objects can be configured.

The lunaIP door stations include surface-mounted and flush-mounted versions, serve as external speech and control units, and are thus the counterparts to the home stations inside the building.



Surface-mounted module 1-fold



Flush-mounted module 1-fold



Surface-mounted module 2-fold



Flush-mounted module 2-fold



Surface-mounted module 3-fold



Flush-mounted module 3-fold

Indoor monitors

lunaIP L-IS-5500

7" touch screen LCD (800 x 480 px) for monitoring and operating door intercom systems. Video and audio are transmitted via network (IP). The monitor has a microphone and speaker and an SD card slot for recording videos, pictures and messages.

lunaIP L-IS-5600/01

7" touch screen LCD (800 x 480 px) for monitoring and operating door intercom systems. Video and audio are transmitted via two-wire. The monitor has a microphone and speakers as well as an SD card slot for recording videos, pictures and messages.



Indoor monitor lunaIP L-IS-5500 / lunaIP L-IS-5600/01

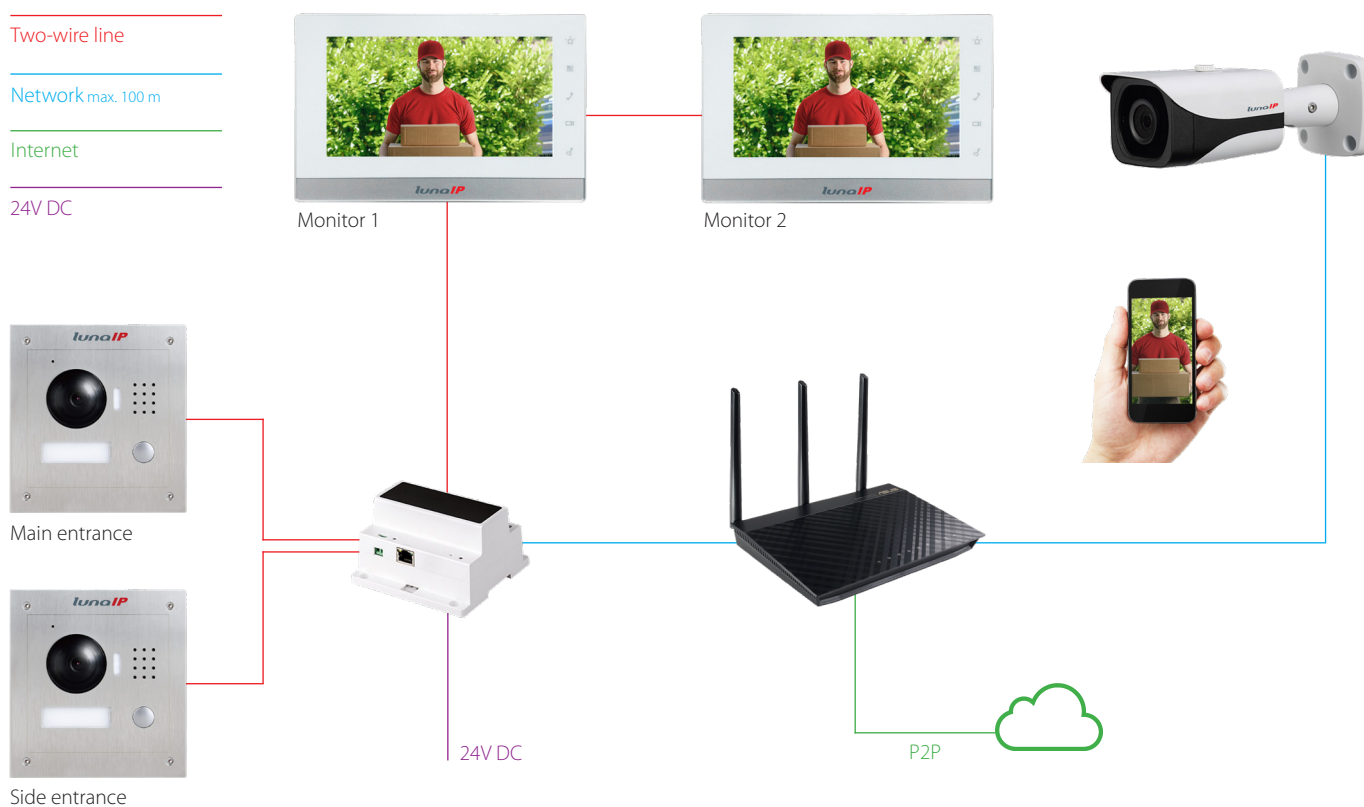


■ Solution: detached house

Two-wire video door communication

Often the installation of a door intercom fails due to the necessary wiring. In lunaIP video door communication systems, only two wires are required to power the components and transmit all the audio and video signals.

For example, an existing bell system can easily be replaced by the lunaIP video door communication system. Instead of laying new lines, the existing lines are used. Even with new installations, the two-wire bus technology reduces the usual cabling work for a door intercom system and enables quick and reverse polarity protected installation.

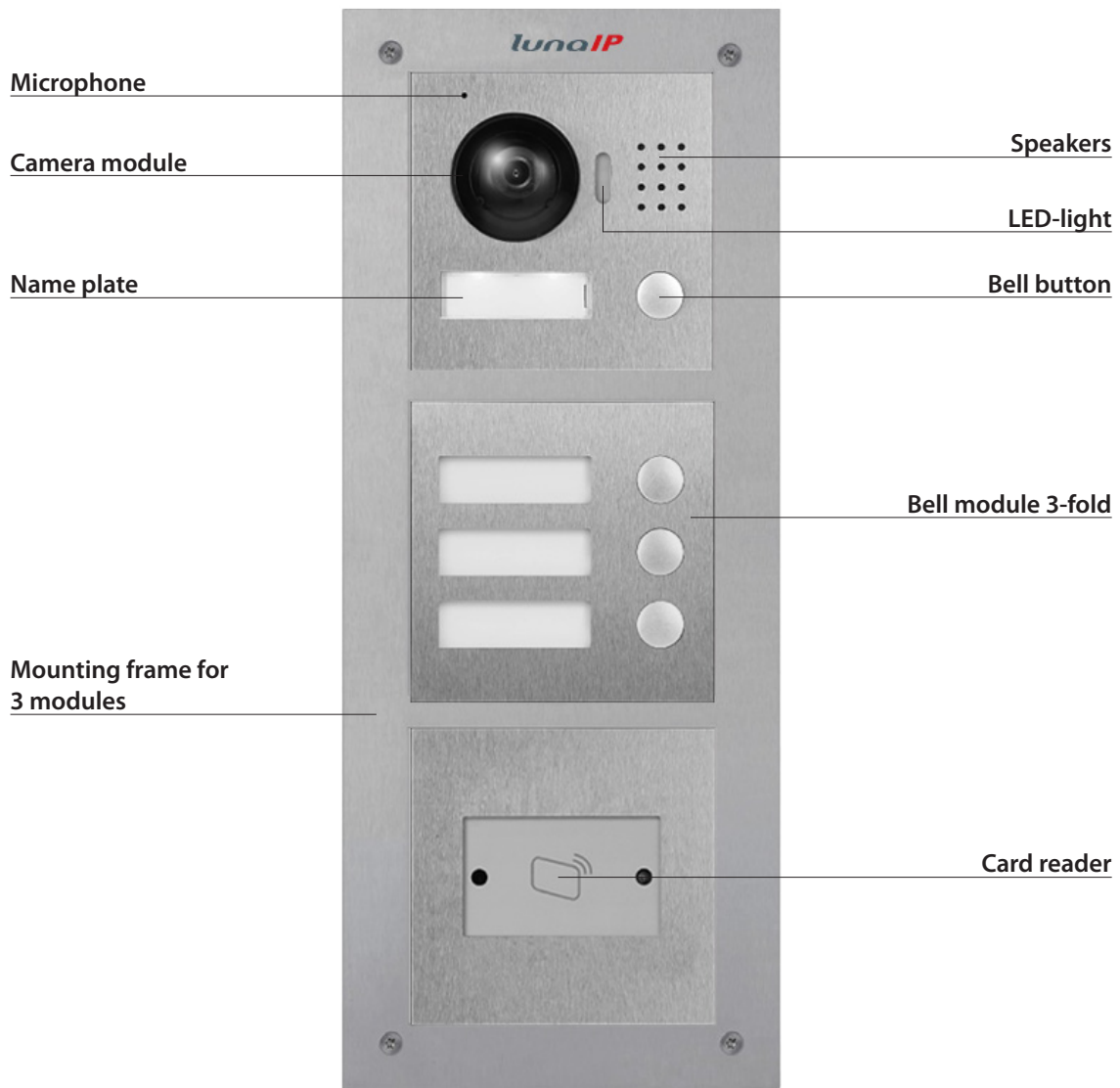


Advantages

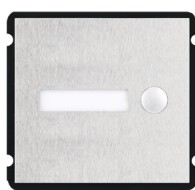
- Fast installation / simple conversion of existing bell systems
- Video, audio and power supply via two-wire line
- Supports multiple door stations and indoor monitors (max 4 devices)
- Internal intercom communication
- Audio and video messages
- IP module allows connection to your home network
- Smartphone app for communication
- Remote controlled door opening
- Extendable field of view - additional cameras can be registered
- Surface and flush mounting IP54 / IK07

■ IP Video door communication

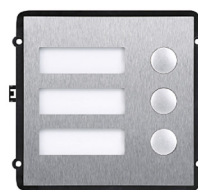
Integration of different modules – The perfect solution for all requirements



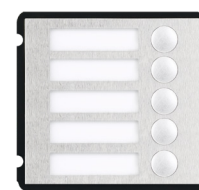
Basic module



Bell module
1-fold



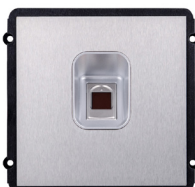
Bell module
3-fold



Bell module
5-fold



Keypad
module



Fingerprint
sensor



Card reader



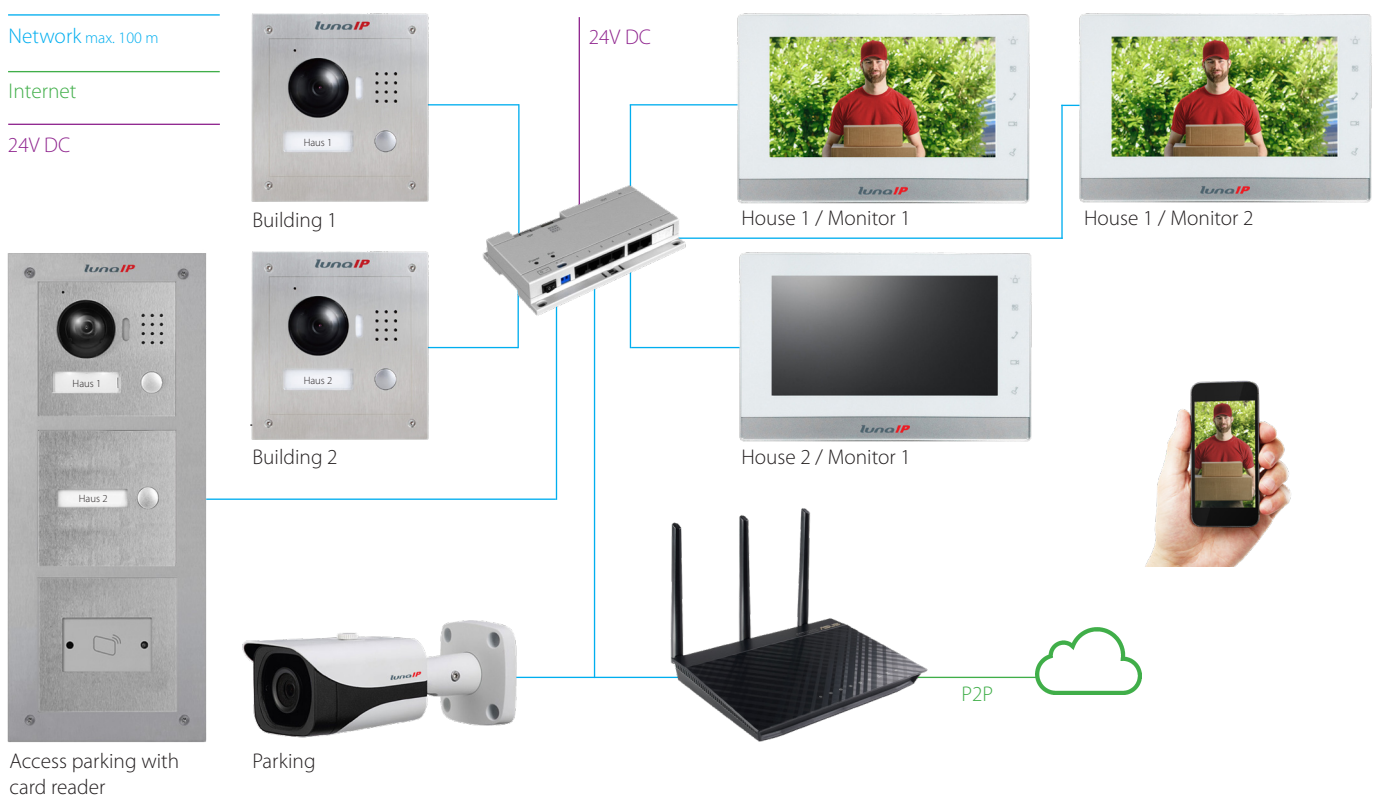
Blind module

■ Solution: Single- and multiple-family houses

IP video door communication

Network-compatible video intercoms are state of the art. The power supply of the IP door intercom system is made easy via network cables, so that no additional lines are necessary. This modern technology not only delivers the best picture and sound quality, but also offers the possibility to integrate smartphones and tablets into the system.

A wide range of accessories such as additional bell modules, card readers and keypads increase the range of application of these systems. Single and multi-family residential buildings can be planned just as well as objects with multiple entrances and multiple monitors.



Advantages

- Flexible application areas thanks to individual stations and modular systems
- Supports up to 20 door stations and 100 internal monitors
- Fast installation - power supply via network cable
- Best picture and sound quality
- Group call and internal communication
- Supports the connection to your home network
- Smartphone app for communication
- Remote controlled door opening
- Extendable field of view - additional cameras can be registered
- Surface and flush mounting IP54 / IK07

■ Solution: Apartment and office buildings

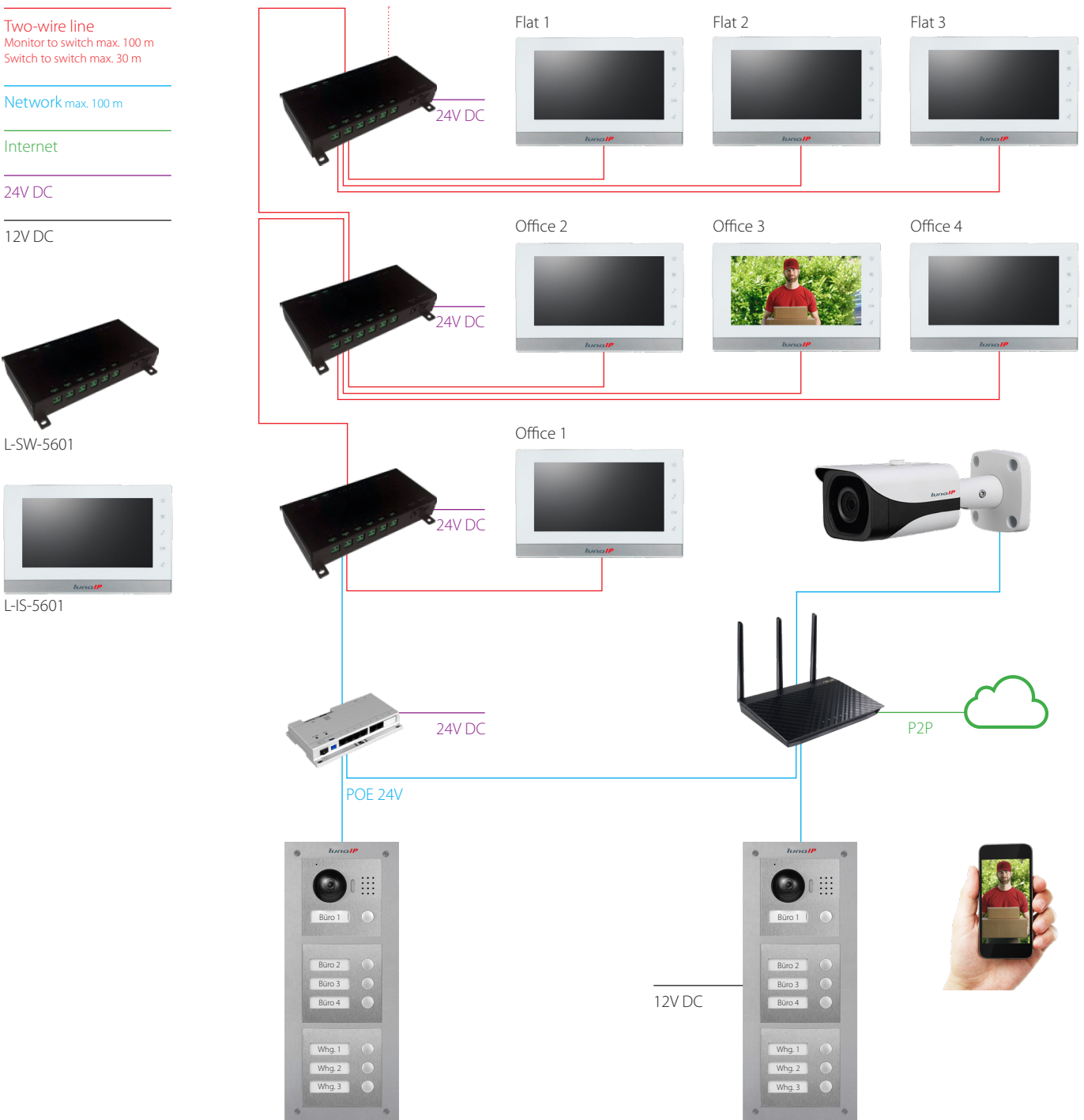
IP / two-wire mix video door communication

Combine the advantages of two-wire technology with the extensive possibilities of modular IP technology.

In the mixed installation, only 2 wires are needed for each residential unit and even between floors. Thus, existing bell systems can be converted without much effort.

The entrance to the building and possible side entrances are given extensive control options thanks to the modular IP technology. Open e.g. the barrier to your property by fingerprint, card reader or even with the smartphone.

Combine **20 IP door stations** with up to **100 two-wire / IP indoor monitors**



*luna***IP**