

# How Dogs See The World



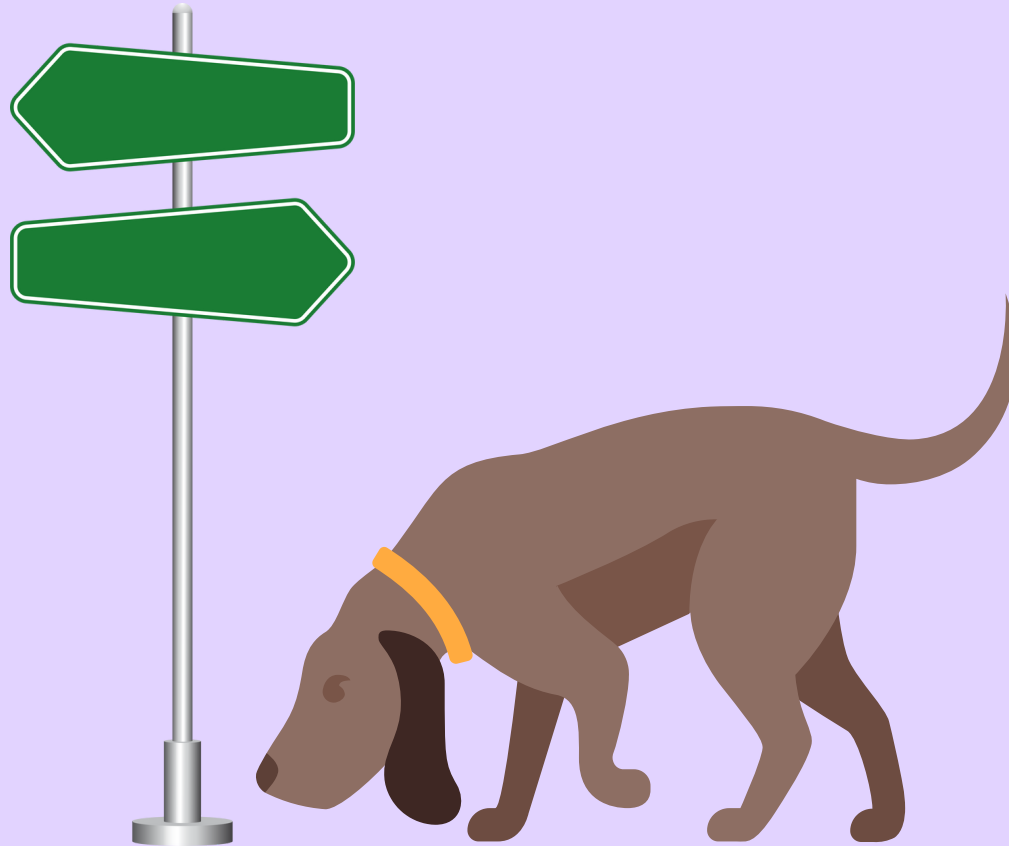
**ANIMAL  
BEHAVIOUR  
KENT**

# WHAT DO THEY SMELL?



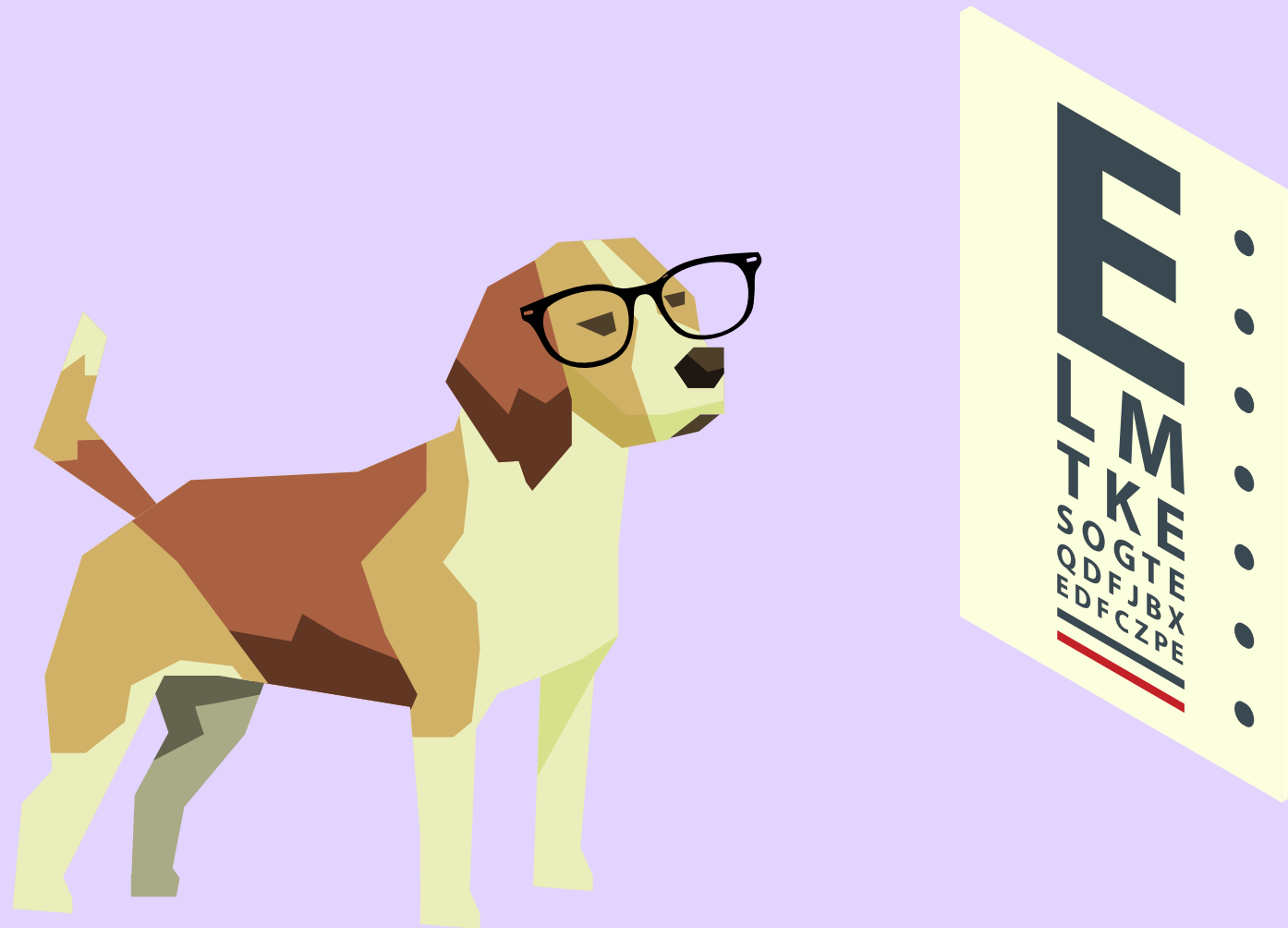
Dogs have a sense of smell that is somewhere between 10,000 and 100,000 times more sensitive to odours than that of humans. This makes it their primary sense, so sniffing and attending to smells is a key way for them to understand the world around them.

# WHAT DO THEY SMELL?



Smells are also a valuable way in which dogs can communicate. Scent marking can communicate lots of social information including the identity, gender, size, and age of other dogs.

# WHAT DO THEY SEE?



Dogs have great night vision, however, their vision is poorer in daylight conditions. They are not able to see as wide of an array of colours as humans, so may get mixed up between red, yellow, and green. Dogs also struggle with close vision, and will struggle to focus on something less than 50cm from their nose.

# WHAT DO THEY HEAR?



Dogs hearing ability outperforms that of humans, as they can hear much higher frequency sounds than us. Their hearing is also more sensitive meaning they can detect sounds that are not loud enough for human ears. Therefore, it is really important to be aware of sounds that we may not notice causing discomfort for our dogs.