



Lehigh Valley Planning Commission

Lehigh Valley General Assembly Meeting

April 30, 2025



Lehigh Valley Planning Commission

Welcome!

Welcome

Introductions

Lehigh Valley Government Academy

- Existing Partnerships

LVPC Organizational Strategic Plan

Community + Regional Planning Work Program

- Housing Supply and Attainability Strategy
- BuildLV Development Trends – Q1
- E-Plan Online Submission Portal

Transportation Work Program

- Nuts and Bolts
- Specific Plans and Projects
- Other Implementation Projects

Environmental Work Program

Meeting Agenda





Lehigh Valley Planning Commission

Introductions



Lehigh Valley Government Academy

PA Municipal Planning Education Institute

- **Subdivision + Land Development**
 - > *Mondays in May (5th, 12th, 19th) 5:30 – 9 PM*

Local Technical Assistance Program

- **Stop Signs + Intersection Traffic Control**
 - > *May 20th, 8 AM to noon*
- **Bridge + Culvert Inspection for Municipalities**
 - > *June 10th, 8 AM to 3 PM*
- **Geosynthetics**
 - > *July 29th, 8 AM to noon*
- **Road Surface Management**
 - > *August 19th, 8 AM to noon*

lvpc.org/lvga





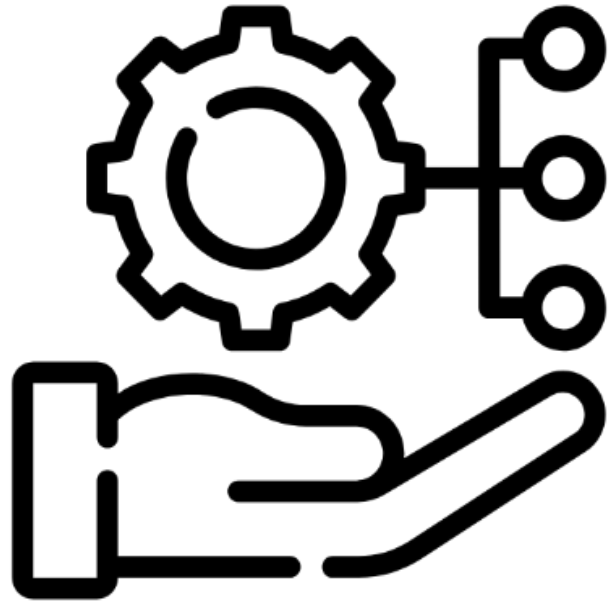
Lehigh Valley Government Academy

WE HEAR YOU!

Developing *New* Lehigh Valley Specific Training

1st Up ➡ Traffic Impact Determinations

- How to calculate the transportation impacts of different land uses
- For Local Planning Commissioners, Public Works Officials/Engineers, Supervisors and Councilpersons, Solicitors
- Feedback on timing



LVPC Strategic Plan

**Thank you to all who
have provided your
input and guidance!**



Lehigh Valley Planning Commission

QUESTIONS? COMMENTS?



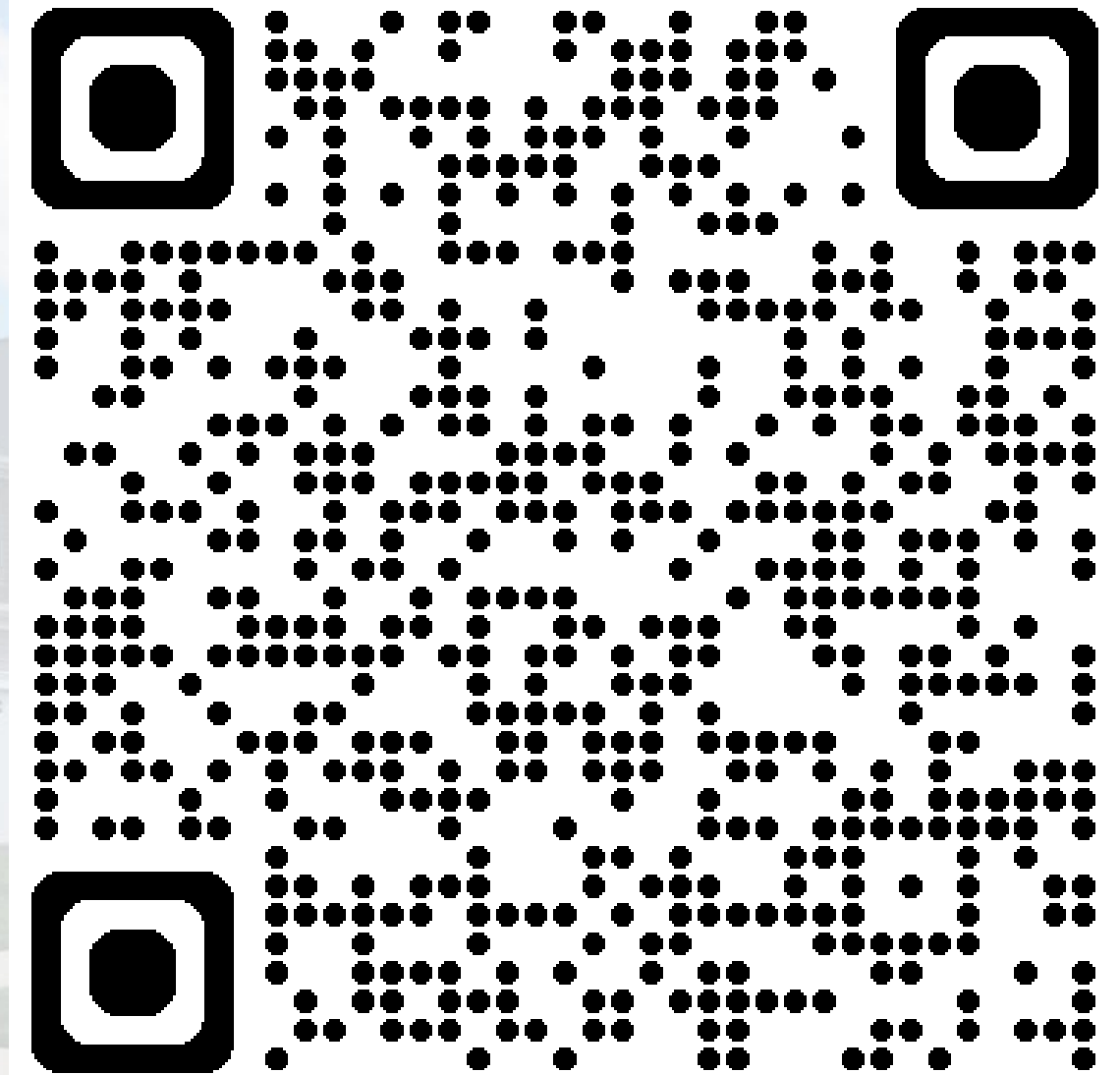


Lehigh Valley Planning Commission

Community + Regional Planning Work Program

Lehigh Valley Housing Attainability Storymap & Dashboard

[LVPC.ORG/HOUSING](https://lvpc.org/housing)



Needed By 2050

5.4k
Housing Units

Shortage Today

1.2k
Housing Units

Cost Burden

36%
Households

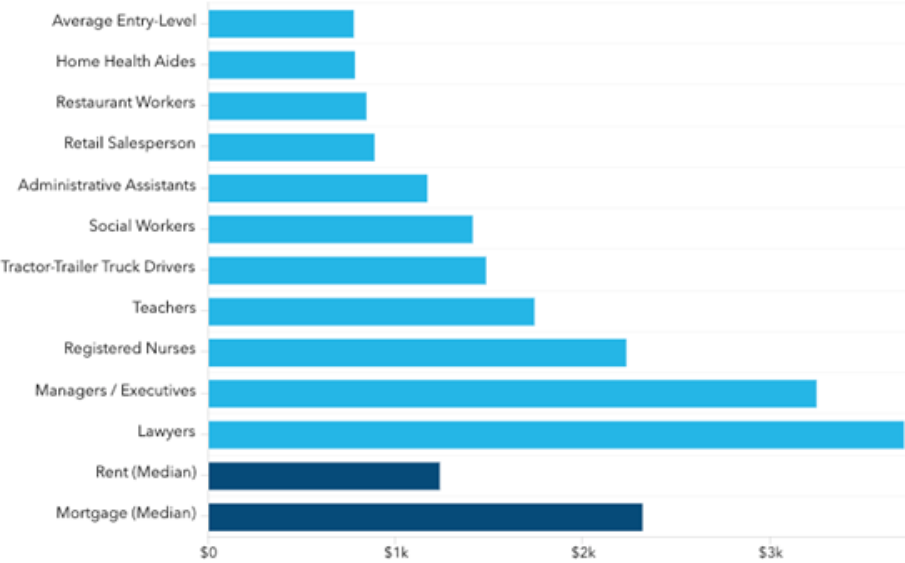
Cost Burden

20%
Owners

Cost Burden

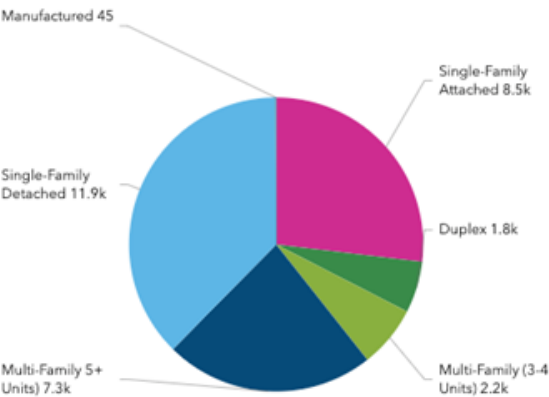
53%
Renters

Affordable Housing Costs by Occupation vs. Median Housing Costs
Hover over bars to view corresponding dollar value



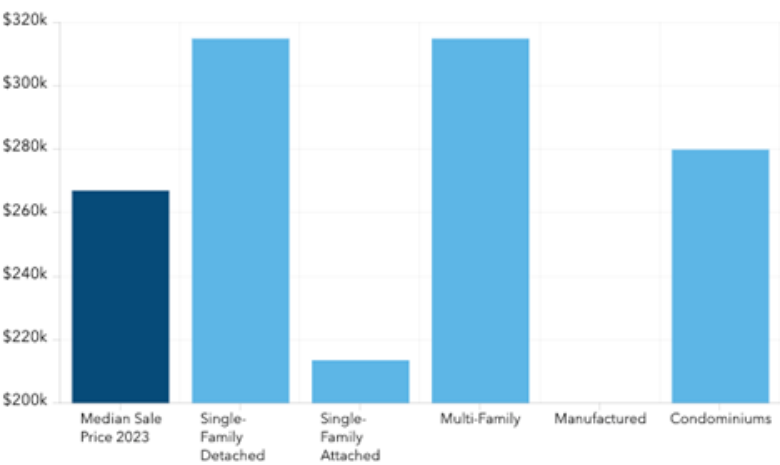
Housing Diversity - Ownership Units by Type

Hover over bars to view corresponding values

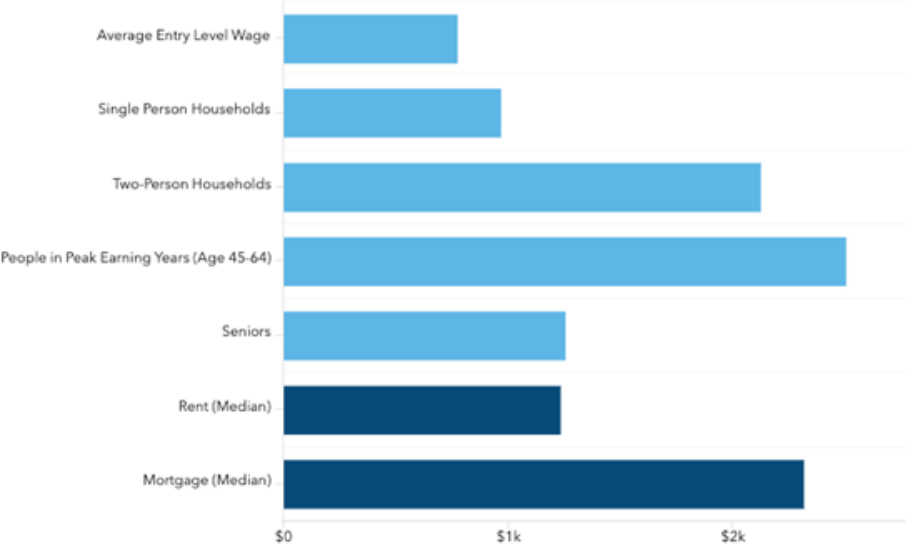


Housing Costs - Median Sales by Type

Hover over bars to view corresponding dollar value

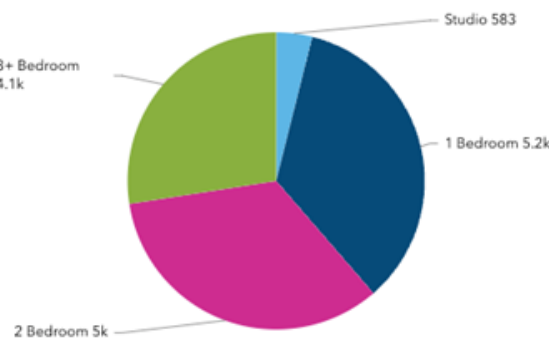


Affordable Housing Costs for Average Household Income vs Median Housing Costs
Hover over bars to view corresponding dollar value



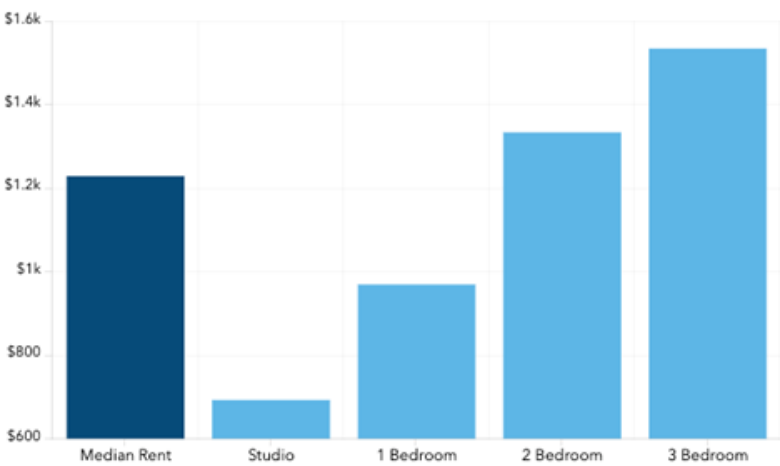
Housing Diversity - Rental Units by Bedrooms

Hover over bars to view corresponding values



Housing Costs - Median Rent by Bedrooms

Hover over bars to view corresponding dollar value



An aerial rendering of a sustainable community development project. It shows a mix of housing types including rowhomes, townhomes, and apartments. A central feature is a large, naturalized water management pond with a small island and a bridge. Surrounding the pond are green spaces, walking paths, and recreational areas. The background shows a suburban neighborhood with trees and distant hills under a cloudy sky.

**Please join us for the
Regional Housing Supply
and Attainability Strategy**

Save the Date
June 23

DeSales University

Regional Development Trends

Quarter 1 Overview

PLAN ACTIVITY BY COUNTY



RESIDENTIAL

NON-RESIDENTIAL

SUBDIVISIONS AND LOT LINE ADJUSTMENTS

STORMWATER MANAGEMENT

MUNICIPAL ORDINANCES, MAPS AND PLANS

REGIONAL TOTALS*

33

Subdivision/Lot Line
Adjustments

70

Development

39

Stormwater
Management

16

Municipal Ordinances,
Maps and Plans

2,755

Acres

**Includes preliminary and final plans*

Regional Development Trends

Quarter 1 Overview



199

SINGLE-FAMILY
DETACHED



279

TOWNHOUSES



353

APARTMENTS



72

TWINS

903 Housing Units



345,173

COMMERCIAL



23,939

RETAIL



70,709

PUBLIC/
QUASI-PUBLIC



890,369

INDUSTRIAL



29,674

OFFICE



103,785

TRANSPORTATION

1.5 million Non-Residential Square Feet

E-Plan Online Submission Portal

In Progress

**A Portal For All
Review Submissions
and Inquiries**

**Public Launch
by End of 2025**



Lehigh Valley Planning Commission

QUESTIONS? COMMENTS?



Transportation Work Program

Nuts and Bolts

- Roadway Functional Classification System Updates
- Population and Employment Projections
- Transportation Safety Plan

Specific Plans and Projects

- Building Electric Vehicle Infrastructure Program
- Trail Gap Analysis
- Lehigh County Freight Land Use Guide
- Enhanced Bus/Bus Rapid Transit Partnership

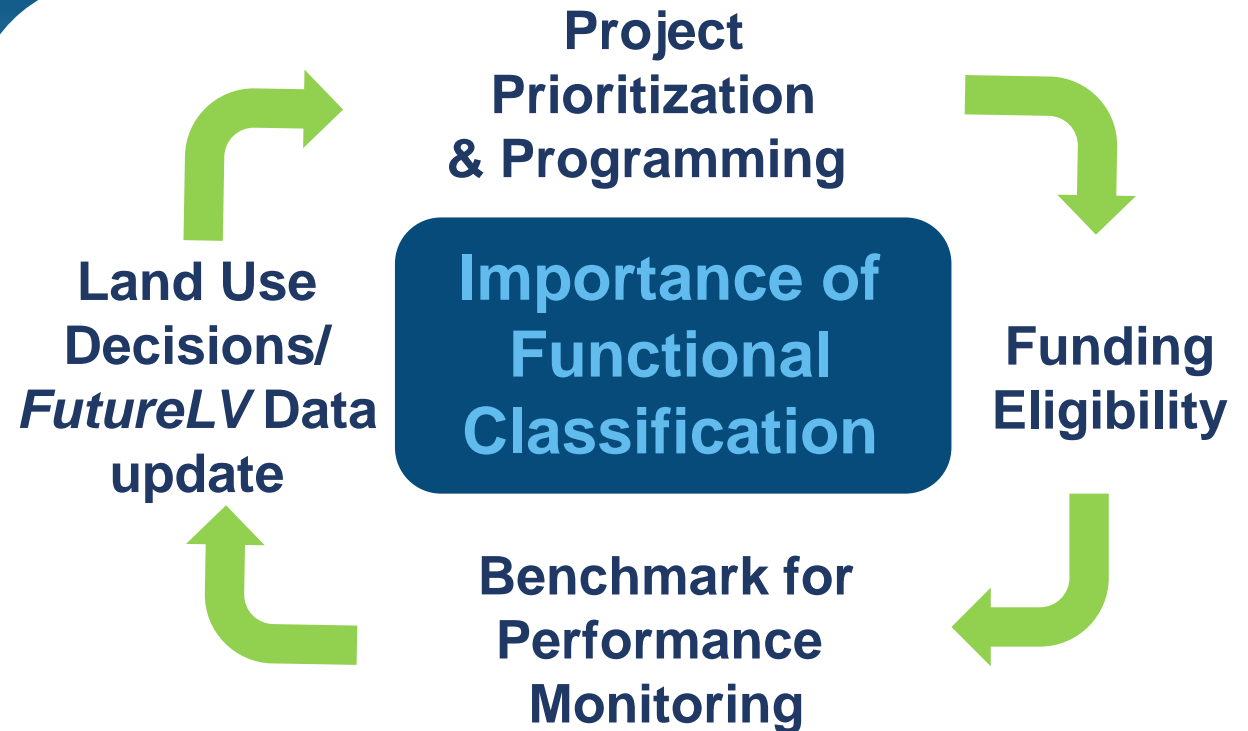
Other Implementation Projects

- Lehigh Valley Passenger Rail – Phase II
- Mobility Share Program Business Plan (aka Bike and/or Scooter Share)

Roadway Functional Classification Update

Figure 4-3 Sample Roadway Color Scheme

	Interstate	1
	Other Freeways and Expressways	2
	Other Principal Arterial	3
	Minor Arterial	4
	Major Collector	5
	Minor Collector	6
	Local	7



Population & Employment Projections

Provide the foundation for informed decision-making across a variety of Lehigh Valley Planning Commission (LVPC) studies and analyses, including:



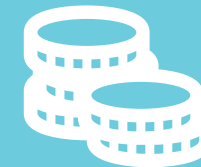
**Regional
Infrastructure
Investment**



**Transportation
Modeling**



**Land Use
Planning**



**Economic
Development
Initiatives**

This plan will encompass:

- *FutureLV: The Regional Plan*
- *Walk/RollLV: Active Transportation Plan*
- *Transportation Performance Measures*
- *Highway Performance Monitoring Program*
- *Congestion Management Process*
- *Walk Audits*
- *Trail Gap Analysis*
- *Local Technical Assistance Program*
- *Eastern Pennsylvania Freight Alliance: Freight Infrastructure Plan*
- *Safety Corridor Designations*
- *Local Plans + Programs*
- *Vision Zero Policy*

Transportation Safety Plan



Building Electric Vehicle Infrastructure Program

A list of community charging use-cases will be created to determine areas in the Lehigh Valley that communities would benefit most from.

EV Infrastructure Survey



www.tinyurl.com/LVEVSurvey

We are looking to where the infrastructure needs to be improved to support future electric vehicle infrastructure



PLANNING + PIZZA

**Building an Effective
Electric Vehicle
Network for the Nation**

May 22, 2025, 12-1pm @ LVPC



Lehigh County Freight Land Use Guide

**Land use Assessment
and regulatory guidance
for freight-based for
Lehigh County
communities later this
year**



Regional Trail Gap Analysis & Prioritization

**Updated trail gap
inventory and
prioritization of gap
closures to support
implementation
funding**



To Train or
Not to Train?
The Billion \$?



Lehigh Valley Enhanced Bus/ Bus Rapid Transit Project

Stop Island

Bus Lane

Green Infrastructure

Pedestrian Walkway

Sidewalks That Connect
Neighborhoods & Businesses

Two-Way Separated
Bike Lane

What is BRT?

- Express Bus Service
- Precursor to Light Rail



Why BRT?

- Improved Internal Transportation Option through Transit
- Key to Balancing Population, Employment Growth, Land Use Pressures and Congestion Reduction
- Supports Community and Economic Development in Core Developed Communities

Who is Leading BRT Implementation?

- LVPC for Planning
- LANTA for Transit Operations
- PennDOT for ROW



Mobility Share Program Business Plan (Bike/Scooter Share)

A Mobility Share Program Business Plan is a structured document outlining how a shared mobility service—like a bike share or/and a scooter share platform—will be developed, launched, and operated.





Lehigh Valley Planning Commission

QUESTIONS? COMMENTS?





Lehigh Valley Planning Commission

Environmental Work Program



PROGRAM GOAL

Develop and implement ambitious plans for reducing greenhouse gas emissions and other harmful air pollutants.

Allentown-Bethlehem-Easton PA-NJ
Metropolitan Statistical Area

Lehigh Valley Regional Climate Action Plan



Climate Change Hazards



- Extreme Heat
- Air Pollution
- Increased Precipitation and Flood Risk
- Loss of Native Plants and Animals
- Milder Winters with Less Snow
- Diseases spread by Insects
- Wildfires
- Reduced Crop Yields



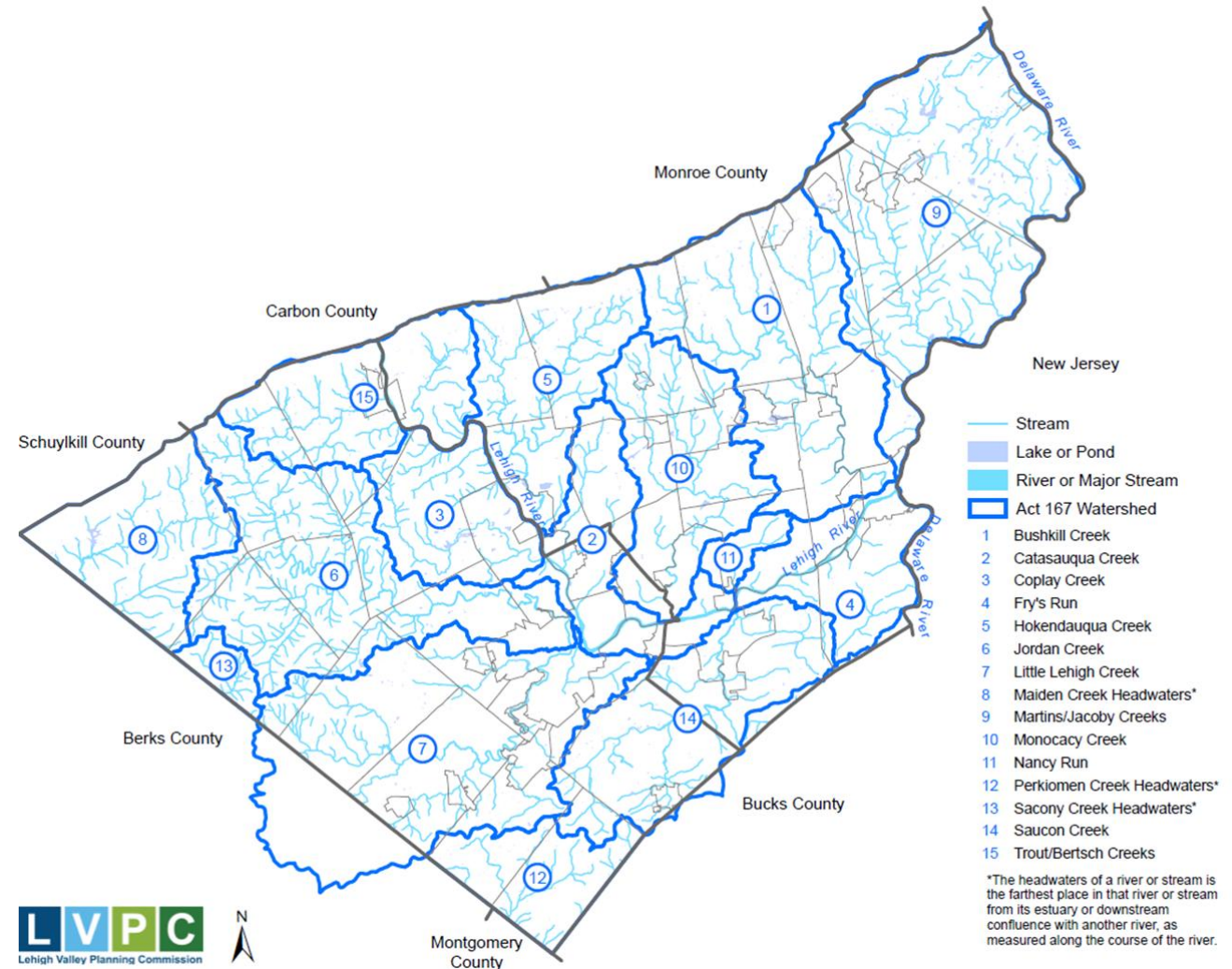
Change in Avg. Temperature (°F) in Allentown from 1951-2023

Winter average temperature	+3.9
Spring average temperature	+2.6
Summer average temperature	+1.9
Fall average temperature	+1.7
Annual average temperature	+2.5

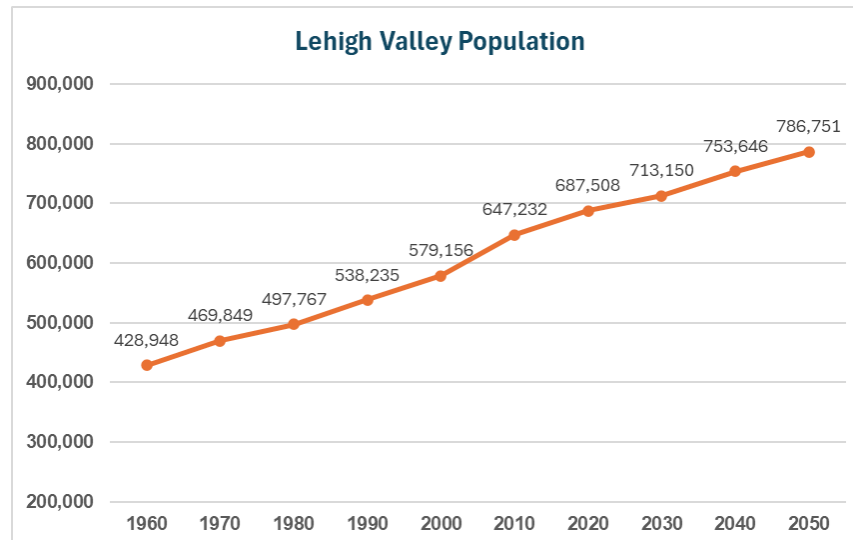
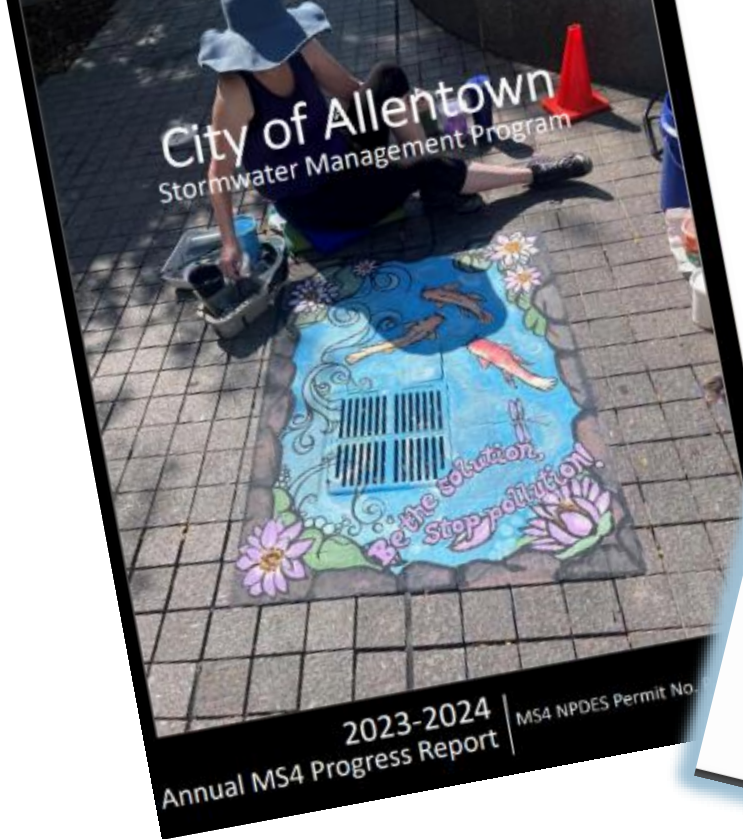
Data from NOAA GLISA

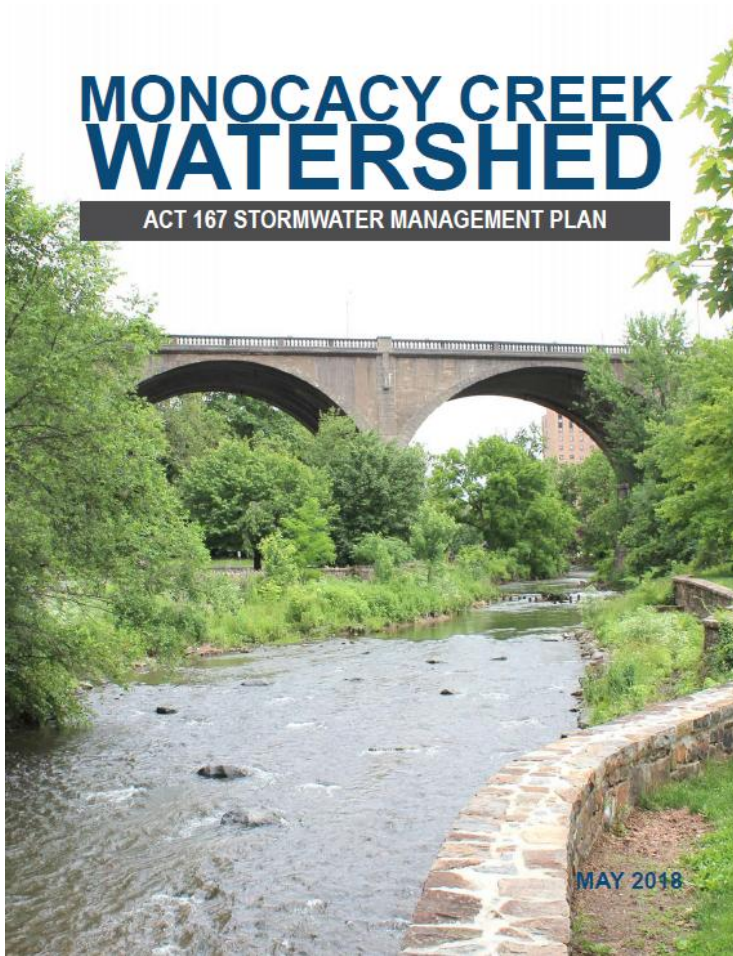
Lehigh Valley Watershed Assessment & Act 167 Model Ordinance Update

- Coordinate with all 62 municipalities, county conservation districts, equity communities, interested groups, and PA DEP
- Update hydrologic analysis to re-evaluate the runoff control standards
- Establish baseline water quality analysis for all 15 watersheds for MS4 planning
- Create consistent, up-to-date stormwater ordinance

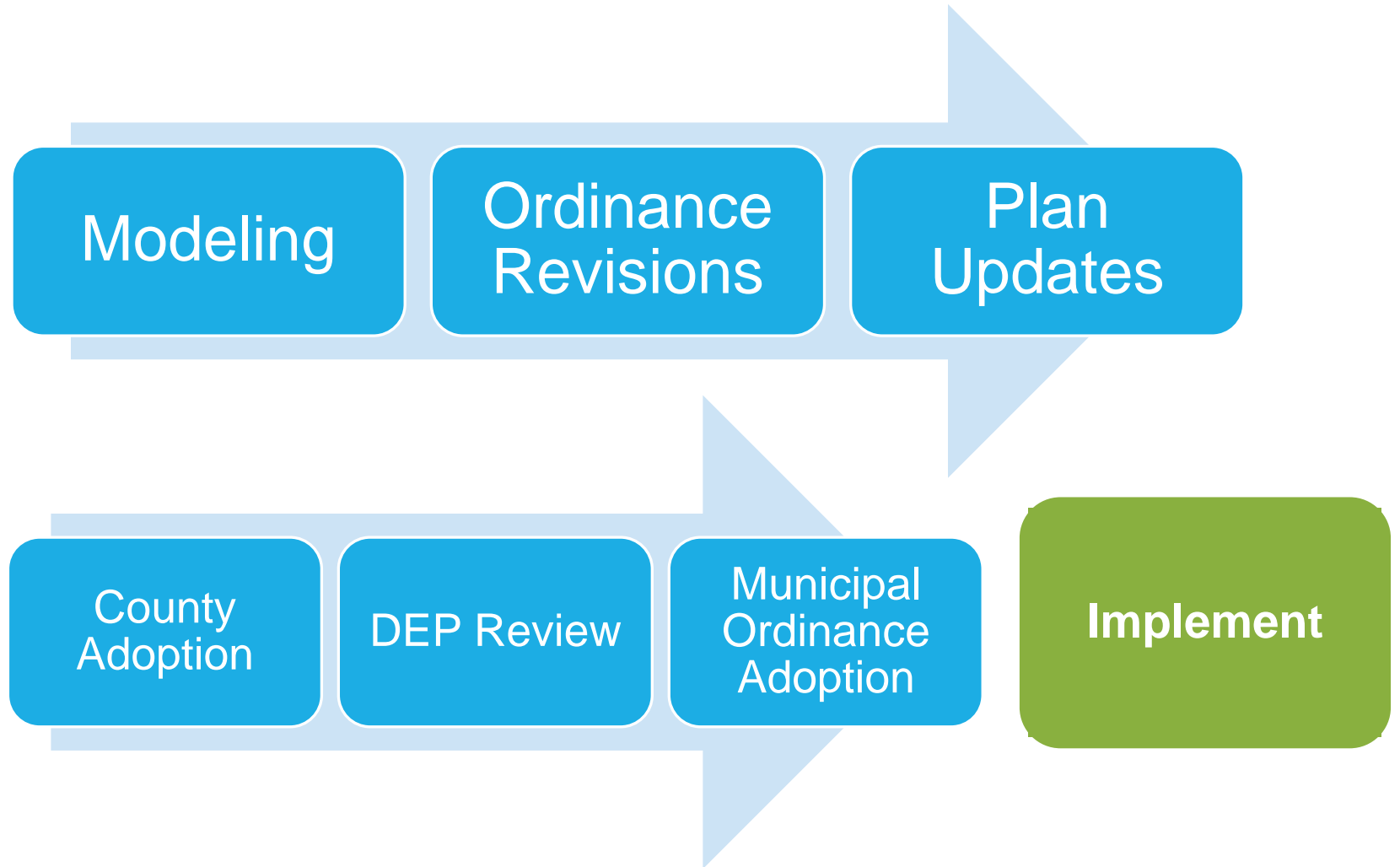


Why Participate?





Next Steps





Lehigh Valley Planning Commission

QUESTIONS? COMMENTS?





Lehigh Valley Planning Commission

Next Lehigh Valley General Assembly Meeting

October 30th, 2025 7PM