

August 2024

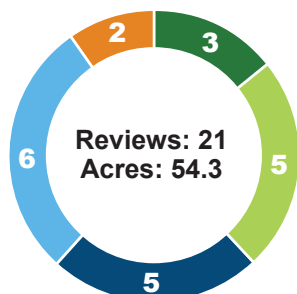
BUILD LV

Subdivision + Land Development Monthly Report

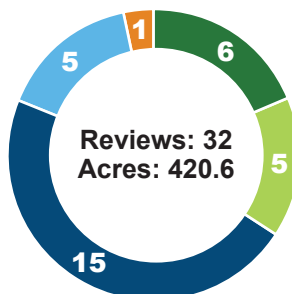


Plan Activity

Lehigh County



Northampton County



■ Residential ■ Non-Residential ■ Subdivisions and Lot Line Adjustments
■ Stormwater Management ■ Municipal Ordinances, Maps and Plans

Regional Totals*

20
 Subdivision/Lot Line
 Adjustments

19
 Development

11
 Stormwater Management

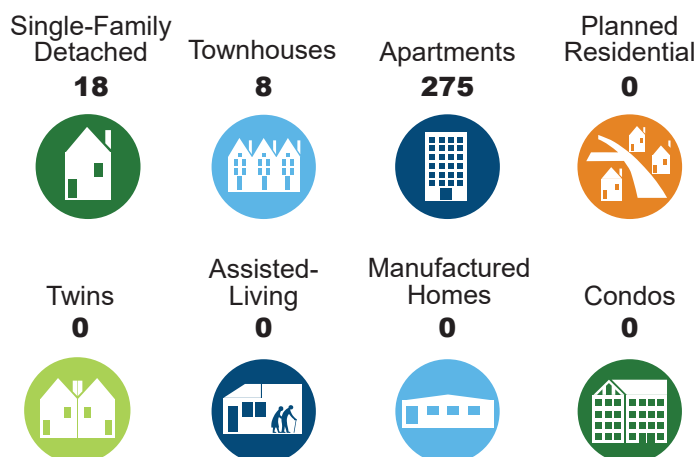
3
 Municipal Ordinances,
 Maps and Plans

474.9
 Acres

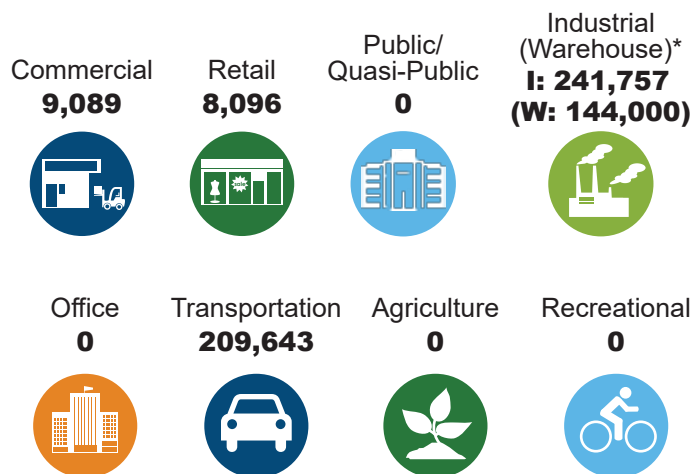
*Includes preliminary and final plans

Types of New Development

Residential: 301 Total Units

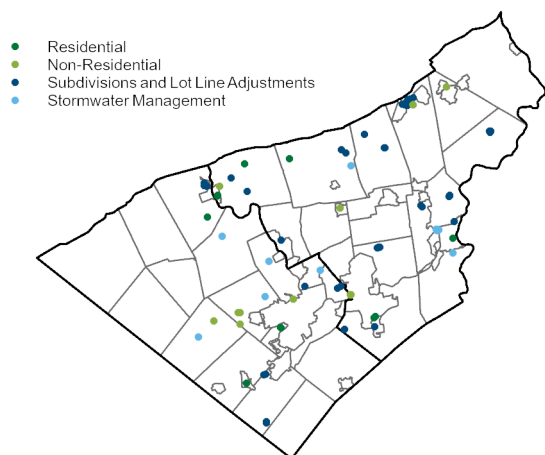


Non-Residential: 468,585 Total Square Feet

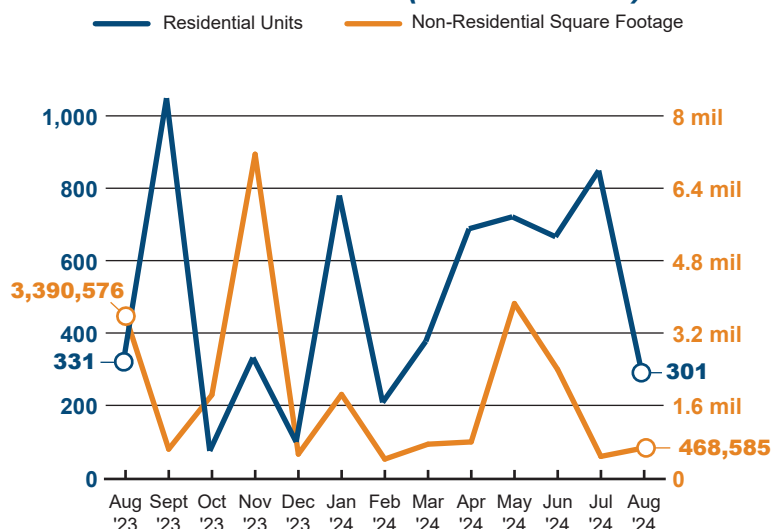


* Warehouse number is a subset of industrial total square footage.

Location of Development



Year to Date (Year to Year)



Previous Reports at lvpc.org/subdivision-data