

June 2024

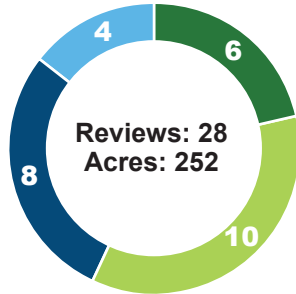
BUILD LV

Subdivision + Land Development Monthly Report

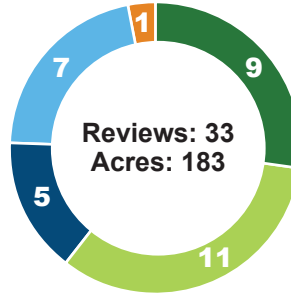


Plan Activity

Lehigh County



Northampton County



Residential Non-Residential Subdivisions and Lot Line Adjustments Stormwater Management Municipal Ordinances, Maps and Plans

Regional Totals*

13
Subdivision/Lot Line
Adjustments

36
Development

11
Stormwater Management

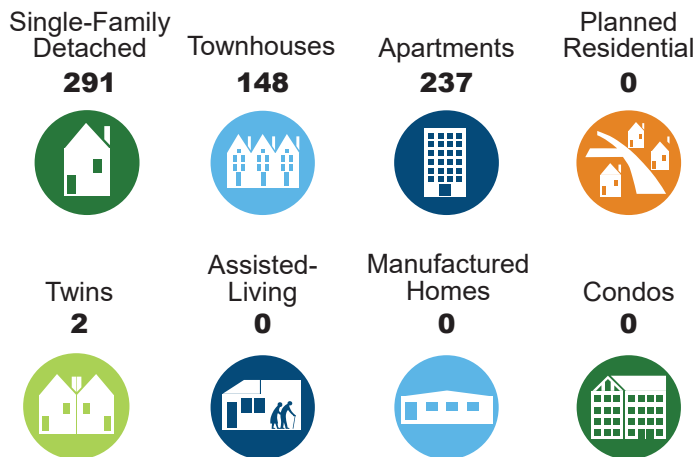
1
Municipal Ordinances,
Maps and Plans

435
Acres

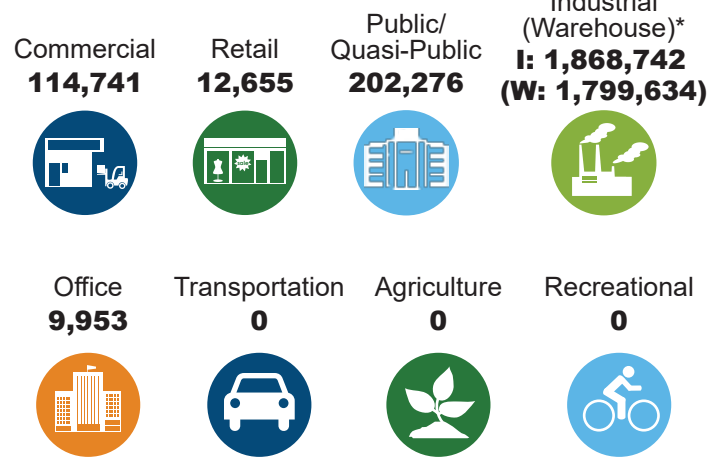
*Includes preliminary and final plans

Types of New Development

Residential: 678 Total Units

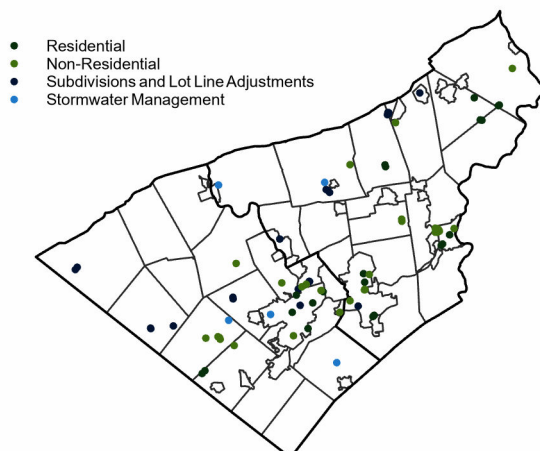


Non-Residential: 2,208,367 Total Square Feet

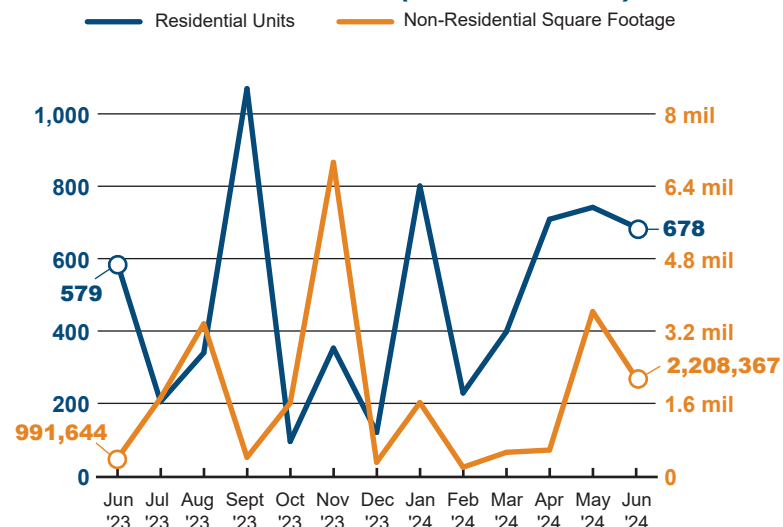


* Warehouse number is a subset of industrial total square footage.

Location of Development



Year to Date (Year to Year)



Previous Reports at lvpc.org/subdivision-data