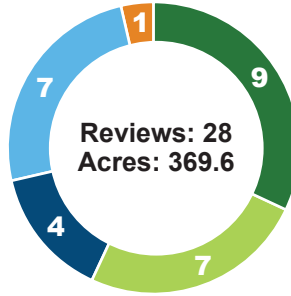


## Plan Activity

### Lehigh County



### Northampton County



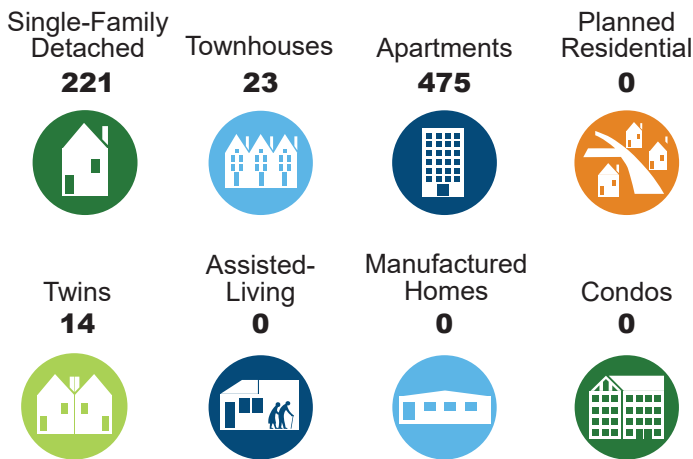
## Regional Totals\*



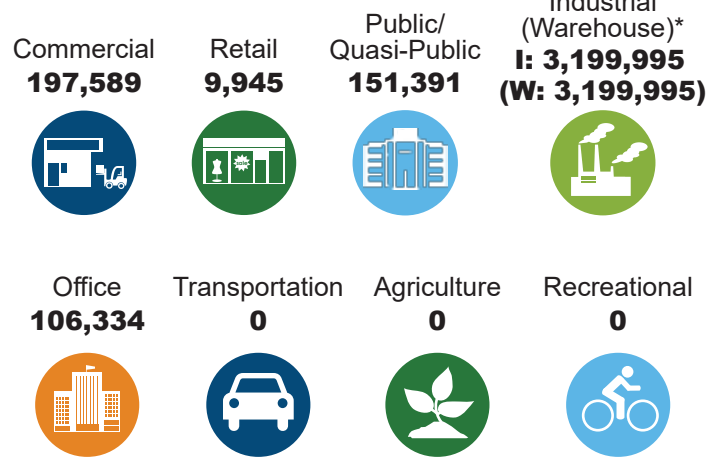
\*Includes preliminary and final plans

## Types of New Development

### Residential: 733 Total Units



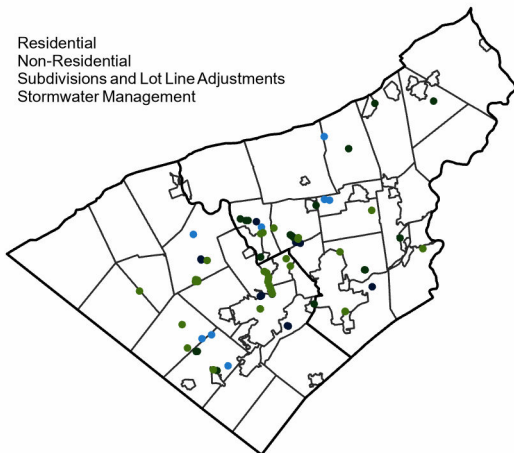
### Non-Residential: 3,665,254 Total Square Feet



\* Warehouse number is a subset of industrial total square footage.

## Location of Development

- Residential
- Non-Residential
- Subdivisions and Lot Line Adjustments
- Stormwater Management



## Year to Date (Year to Year)

