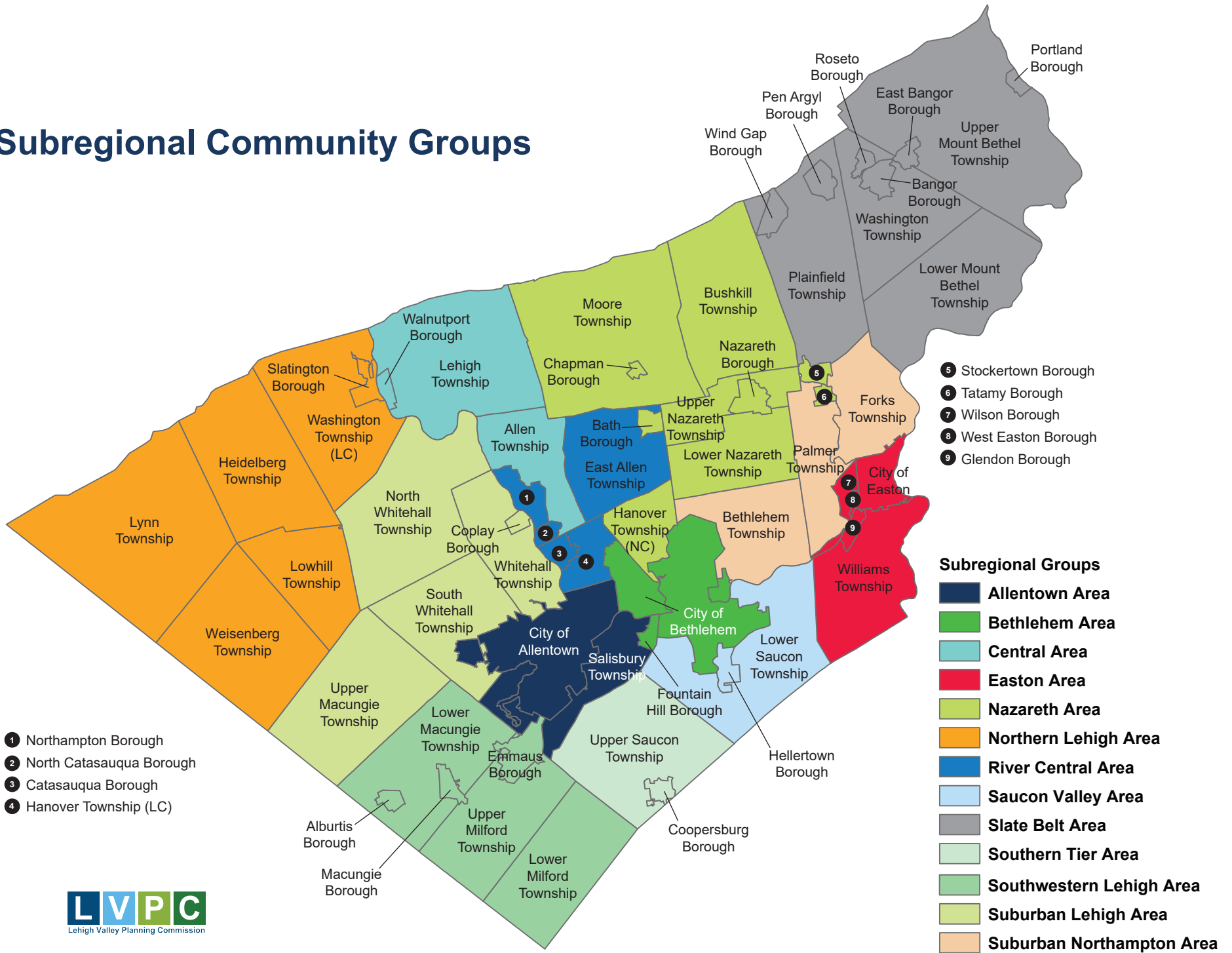


# planning for the new normal.



# Subregional Community Groups



# 2021 Subregional + Municipal Subdivision + Land Development Activity

**Legend:** AL = Assisted-Living; APT = Apartment; CONDO = Condominium; MH = Manufactured Home; TOWN = Townhouse; SFD = Single-Family Detached; TW = Twin; AG = Agriculture; COMM = Commercial; IND = Industrial (Warehouse is a subset of this); OFF = Office; PUB = Public/Quasi-public; REC = Recreation; RET = Retail; TRANS = Transportation

## Allentown Area

Municipality	Residential Units								Non-Residential Square Feet								
	AL	APT	CONDO	MH	TOWN	SFD	TW	Total	AG	COMM	IND	OFF	PUB	REC	RET	TRANS	Total
City of Allentown	-	1,091	-	-	-	49	12	1,152	-	117,687	456,637	132,192	188,284	-	49,500	179,246	1,123,546
Salisbury Township	-	-	-	-	-	3	2	5	-	-	-	-	2,023	-	-	-	2,023
<b>Subregion Total</b>	-	<b>1,091</b>	-	-	-	<b>52</b>	<b>14</b>	<b>1,157</b>	-	<b>117,687</b>	<b>456,637</b>	<b>132,192</b>	<b>190,307</b>	-	<b>49,500</b>	<b>179,246</b>	<b>1,125,569</b>

## Bethlehem Area

Municipality	Residential Units								Non-Residential Square Feet								
	AL	APT	CONDO	MH	TOWN	SFD	TW	Total	AG	COMM	IND	OFF	PUB	REC	RET	TRANS	Total
City of Bethlehem	-	684	-	-	-	5	2	691	-	137,958	2,068,950	-	-	-	22,766	-	2,229,674
Fountain Hill Borough	-	-	-	-	-	-	-	-	-	-	-	-	-	-	-	-	-
Freemansburg Borough	-	24	-	-	-	-	-	24	-	-	-	-	-	-	-	-	-
<b>Subregion Total</b>	-	<b>708</b>	-	-	-	<b>5</b>	<b>2</b>	<b>715</b>	-	<b>137,958</b>	<b>2,068,950</b>	-	-	-	<b>22,766</b>	-	<b>2,229,674</b>

## Central Area

Municipality	Residential Units								Non-Residential Square Feet								
	AL	APT	CONDO	MH	TOWN	SFD	TW	Total	AG	COMM	IND	OFF	PUB	REC	RET	TRANS	Total
Allen Township	-	-	-	-	-	2	-	2	-	-	-	-	-	-	-	-	-
Lehigh Township	-	-	-	29	-	4	6	39	-	-	-	-	-	-	-	-	-
Walnutport Borough	-	-	-	-	-	-	2	2	-	-	-	-	-	-	-	-	-
<b>Subregion Total</b>	-	-	-	<b>29</b>	-	<b>6</b>	<b>8</b>	<b>43</b>	-	-	-	-	-	-	-	-	-

## Easton Area

Municipality	Residential Units								Non-Residential Square Feet								
	AL	APT	CONDO	MH	TOWN	SFD	TW	Total	AG	COMM	IND	OFF	PUB	REC	RET	TRANS	Total
City of Easton	-	472	-	-	-	1	2	475	-	9,200	-	11,943	9,200	-	2,970	-	33,313
Glendon Borough	-	-	-	-	-	-	-	-	-	1,260	25,000	-	-	-	-	-	26,260
West Easton Borough	-	-	-	-	-	-	-	-	-	-	-	-	-	-	-	-	-
Williams Township	-	-	-	-	-	2	-	2	-	-	-	-	-	-	-	-	-
Wilson Borough	-	-	-	-	-	-	-	-	-	-	-	-	-	-	-	-	-
<b>Subregion Total</b>	-	<b>472</b>	-	-	-	<b>3</b>	<b>2</b>	<b>477</b>	-	<b>10,460</b>	<b>25,000</b>	<b>11,943</b>	<b>9,200</b>	-	<b>2,970</b>	-	<b>59,573</b>

**Legend:** AL = Assisted-Living; APT = Apartment; CONDO = Condominium; MH = Manufactured Home; TOWN = Townhouse;  
 SFD = Single-Family Detached; TW = Twin; AG = Agriculture; COMM = Commercial; IND = Industrial (Warehouse is a subset of this); OFF = Office;  
 PUB = Public/Quasi-public; REC = Recreation; RET = Retail; TRANS = Transportation

**Nazareth Area**

Municipality	Residential Units								Non-Residential Square Feet								
	AL	APT	CONDO	MH	TOWN	SFD	TW	Total	AG	COMM	IND	OFF	PUB	REC	RET	TRANS	Total
Bath Borough	-	120	-	-	-	-	-	120	-	-	-	-	-	-	-	-	-
Bushkill Township	-	-	-	-	-	11	-	11	-	-	427,875	-	-	-	-	-	427,875
Chapman Borough	-	-	-	-	-	-	-	-	-	-	-	-	-	-	-	-	-
Hanover Township NC	1	-	-	-	-	21	-	22	-	11,170	-	82,932	3,680	-	-	-	97,782
Lower Nazareth Township	-	88	-	-	-	10	-	98	-	5,272	1,567,772	-	-	40,502	-	-	1,613,546
Moore Township	-	-	-	-	-	6	-	6	-	7,800	488,150	-	2,250	-	-	-	498,200
Nazareth Borough	-	36	-	-	-	-	-	36	-	-	-	-	-	-	-	-	-
Stockertown Borough	-	-	-	-	-	-	-	-	-	-	-	-	-	-	-	-	-
Tatamy Borough	-	-	-	-	-	36	-	36	-	-	-	-	-	-	-	-	-
Upper Nazareth Township	-	-	-	-	-	48	16	64	-	-	-	-	-	-	-	-	-
<b>Subregion Total</b>	<b>1</b>	<b>244</b>	<b>-</b>	<b>-</b>	<b>-</b>	<b>132</b>	<b>16</b>	<b>393</b>	<b>-</b>	<b>24,242</b>	<b>2,483,797</b>	<b>82,932</b>	<b>5,930</b>	<b>40,502</b>	<b>-</b>	<b>-</b>	<b>2,637,403</b>

**Northern Lehigh Area**

Municipality	Residential Units								Non-Residential Square Feet								
	AL	APT	CONDO	MH	TOWN	SFD	TW	Total	AG	COMM	IND	OFF	PUB	REC	RET	TRANS	Total
Heidelberg Township	-	-	-	-	-	3	-	3	-	-	-	-	-	-	-	-	-
Lowhill Township	-	-	-	-	-	3	-	3	-	8,928	-	-	-	-	-	-	8,928
Lynn Township	-	-	-	-	-	3	-	3	-	-	-	-	-	-	-	-	-
Slatington Borough	-	-	-	-	-	-	-	-	-	-	-	-	-	-	-	-	-
Washington Township LC	-	-	-	-	-	6	-	6	-	-	-	728	-	-	-	-	728
Weisenberg Township	-	-	-	-	-	8	-	8	20,160	-	-	-	-	-	-	-	20,160
<b>Subregion Total</b>	<b>-</b>	<b>-</b>	<b>-</b>	<b>-</b>	<b>-</b>	<b>23</b>	<b>-</b>	<b>23</b>	<b>20,160</b>	<b>8,928</b>	<b>-</b>	<b>728</b>	<b>-</b>	<b>-</b>	<b>-</b>	<b>-</b>	<b>29,816</b>

**River Central Area**

Municipality	Residential Units								Non-Residential Square Feet								
	AL	APT	CONDO	MH	TOWN	SFD	TW	Total	AG	COMM	IND	OFF	PUB	REC	RET	TRANS	Total
Catasauqua Borough	-	-	-	-	36	1	-	37	-	-	-	-	-	-	-	-	-
East Allen Township	-	-	-	-	-	-	-	-	-	-	452,400	-	-	-	-	-	452,400
Hanover Township LC	-	-	-	-	-	-	-	-	-	255,135	1,044,681	-	-	-	-	26,000	1,325,816
North Catasauqua Borough	-	-	-	-	-	-	-	-	-	-	-	-	-	-	-	-	-
Northampton Borough	-	-	-	-	54	51	12	117	-	-	-	-	-	-	-	-	-
<b>Subregion Total</b>	<b>-</b>	<b>-</b>	<b>-</b>	<b>-</b>	<b>90</b>	<b>52</b>	<b>12</b>	<b>154</b>	<b>-</b>	<b>255,135</b>	<b>1,497,081</b>	<b>-</b>	<b>-</b>	<b>-</b>	<b>-</b>	<b>26,000</b>	<b>1,778,216</b>

**Legend:** AL = Assisted-Living; APT = Apartment; CONDO = Condominium; MH = Manufactured Home; TOWN = Townhouse; SFD = Single-Family Detached; TW = Twin; AG = Agriculture; COMM = Commercial; IND = Industrial (Warehouse is a subset of this); OFF = Office; PUB = Public/Quasi-public; REC = Recreation; RET = Retail; TRANS = Transportation

**Saucon Valley Area**

Municipality	Residential Units								Non-Residential Square Feet								
	AL	APT	CONDO	MH	TOWN	SFD	TW	Total	AG	COMM	IND	OFF	PUB	REC	RET	TRANS	Total
Hellertown Borough	-	68	-	-	-	1	-	69	-	11,840	-	1,200	13,115	-	-	-	26,155
Lower Saucon Township	-	-	-	-	-	31	-	31	-	-	-	-	-	-	-	-	-
<b>Subregion Total</b>	<b>-</b>	<b>68</b>	<b>-</b>	<b>-</b>	<b>-</b>	<b>32</b>	<b>-</b>	<b>100</b>	<b>-</b>	<b>11,840</b>	<b>-</b>	<b>1,200</b>	<b>13,115</b>	<b>-</b>	<b>-</b>	<b>-</b>	<b>26,155</b>

**Slate Belt Area**

Municipality	Residential Units								Non-Residential Square Feet								
	AL	APT	CONDO	MH	TOWN	SFD	TW	Total	AG	COMM	IND	OFF	PUB	REC	RET	TRANS	Total
Bangor Borough	-	-	-	-	-	-	-	-	-	-	-	-	-	-	-	-	-
East Bangor Borough	-	-	-	-	-	-	-	-	-	-	-	-	-	-	-	-	-
Lower Mount Bethel Township	-	-	-	-	-	2	-	2	-	-	40,768	-	-	-	-	-	40,768
Pen Argyl Borough	-	-	-	-	-	-	-	-	-	-	-	-	-	-	-	-	-
Plainfield Township	-	-	-	-	-	3	-	3	-	26,873	1,677,690	19,520	-	-	-	-	1,724,083
Portland Borough	-	-	-	-	-	-	-	-	-	-	120,000	-	-	-	-	-	120,000
Roseto Borough	-	-	-	-	-	-	2	2	-	-	-	-	-	-	-	-	-
Upper Mount Bethel Township	-	-	-	-	-	2	-	2	-	-	420,000	-	-	-	-	-	420,000
Washington Township NC	-	-	-	-	-	-	-	-	-	3,250	-	-	-	-	-	-	3,250
Wind Gap Borough	-	-	-	-	-	-	-	-	-	-	349,116	-	-	-	-	-	349,116
<b>Subregion Total</b>	<b>-</b>	<b>-</b>	<b>-</b>	<b>-</b>	<b>-</b>	<b>7</b>	<b>2</b>	<b>9</b>	<b>-</b>	<b>30,123</b>	<b>2,607,774</b>	<b>19,520</b>	<b>-</b>	<b>-</b>	<b>-</b>	<b>-</b>	<b>2,657,417</b>

**Southern Tier Area**

Municipality	Residential Units								Non-Residential Square Feet								
	AL	APT	CONDO	MH	TOWN	SFD	TW	Total	AG	COMM	IND	OFF	PUB	REC	RET	TRANS	Total
Coopersburg Borough	-	-	-	-	66	22	-	88	-	-	-	-	12,462	-	-	-	12,462
Upper Saucon Township	40	-	-	-	-	276	-	316	-	25,558	62,842	48,500	123,923	-	54,142	-	314,965
<b>Subregion Total</b>	<b>40</b>	<b>-</b>	<b>-</b>	<b>-</b>	<b>66</b>	<b>298</b>	<b>-</b>	<b>404</b>	<b>-</b>	<b>25,558</b>	<b>62,842</b>	<b>48,500</b>	<b>136,385</b>	<b>-</b>	<b>54,142</b>	<b>-</b>	<b>327,427</b>

**Southwest Lehigh Area**

Municipality	Residential Units								Non-Residential Square Feet								
	AL	APT	CONDO	MH	TOWN	SFD	TW	Total	AG	COMM	IND	OFF	PUB	REC	RET	TRANS	Total
Alburtis Borough	-	-	-	-	-	-	-	-	-	-	-	-	-	-	-	-	-
Emmaus Borough	-	140	-	-	26	-	2	168	-	-	-	-	4,345	-	-	-	4,345
Lower Macungie Township	1	-	-	-	136	316	2	455	-	357,139	918,710	36,546	-	-	-	-	1,312,395
Lower Milford Township	-	-	-	-	-	23	22	45	-	-	-	-	-	-	-	-	-
Macungie Borough	-	-	-	-	-	68	-	68	-	-	-	-	-	-	-	-	-
Upper Milford Township	-	-	-	-	-	1	-	1	-	32,000	-	-	1,678	-	-	-	33,678
<b>Subregion Total</b>	<b>1</b>	<b>140</b>	<b>-</b>	<b>-</b>	<b>162</b>	<b>408</b>	<b>26</b>	<b>737</b>	<b>-</b>	<b>389,139</b>	<b>918,710</b>	<b>36,546</b>	<b>6,023</b>	<b>-</b>	<b>-</b>	<b>-</b>	<b>1,350,418</b>

**Legend:** AL = Assisted-Living; APT = Apartment; CONDO = Condominium; MH = Manufactured Home; TOWN = Townhouse; SFD = Single-Family Detached; TW = Twin; AG = Agriculture; COMM = Commercial; IND = Industrial (Warehouse is a subset of this); OFF = Office; PUB = Public/Quasi-public; REC = Recreation; RET = Retail; TRANS = Transportation

**Suburban Lehigh Area**

Municipality	Residential Units								Non-Residential Square Feet								
	AL	APT	CONDO	MH	TOWN	SFD	TW	Total	AG	COMM	IND	OFF	PUB	REC	RET	TRANS	Total
Coplay Borough	-	-	-	-	-	-	-	-	-	4,680	-	-	-	-	-	-	4,680
North Whitehall Township	-	-	-	-	-	79	-	79	-	3,530	118,620	-	17,753	-	-	-	139,903
South Whitehall Township	-	75	-	-	-	-	-	75	-	19,098	124,171	-	44,739	-	-	-	188,008
Upper Macungie Township	-	273	20	-	152	294	-	739	-	3,110	666,068	11,200	-	191,631	5,000	-	877,009
Whitehall Township	-	-	-	-	-	1	2	3	-	5,050	6,600	17,030	-	-	-	-	28,680
<b>Subregion Total</b>	<b>-</b>	<b>348</b>	<b>20</b>	<b>-</b>	<b>152</b>	<b>374</b>	<b>2</b>	<b>896</b>	<b>-</b>	<b>35,468</b>	<b>915,459</b>	<b>28,230</b>	<b>62,492</b>	<b>191,631</b>	<b>5,000</b>	<b>-</b>	<b>1,238,280</b>

**Suburban Northampton Area**

Municipality	Residential Units								Non-Residential Square Feet								
	AL	APT	CONDO	MH	TOWN	SFD	TW	Total	AG	COMM	IND	OFF	PUB	REC	RET	TRANS	Total
Bethlehem Township	-	236	-	-	-	44	36	316	-	9,085	299,796	-	18,907	-	6,295	-	334,083
Forks Township	-	-	-	-	-	41	4	45	-	32,769	646,290	-	-	-	2,531	-	681,590
Palmer Township	-	96	-	-	111	70	-	277	-	-	1,583,362	1,195	-	-	-	-	1,584,557
<b>Subregion Total</b>	<b>-</b>	<b>332</b>	<b>-</b>	<b>-</b>	<b>111</b>	<b>155</b>	<b>40</b>	<b>638</b>	<b>-</b>	<b>41,854</b>	<b>2,529,448</b>	<b>1,195</b>	<b>18,907</b>	<b>-</b>	<b>8,826</b>	<b>-</b>	<b>2,600,230</b>

**Region Totals**

Municipality	Residential Units								Non-Residential Square Feet								
	AL	APT	CONDO	MH	TOWN	SFD	TW	Total	AG	COMM	IND	OFF	PUB	REC	RET	TRANS	Total
<b>GRAND TOTAL</b>	<b>42</b>	<b>3,403</b>	<b>20</b>	<b>29</b>	<b>581</b>	<b>1,547</b>	<b>124</b>	<b>5,746</b>	<b>20,160</b>	<b>1,088,392</b>	<b>13,565,698</b>	<b>362,986</b>	<b>442,359</b>	<b>232,133</b>	<b>143,204</b>	<b>205,246</b>	<b>16,060,178</b>