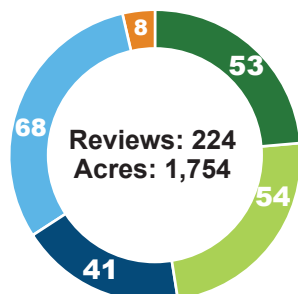


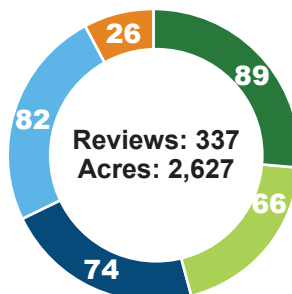
## Plan Activity

### Lehigh County



Residential Non-Residential  
Stormwater Management

### Northampton County



Subdivisions and Lot Line Adjustments  
Municipal Ordinances, Maps and Plans

## Regional Totals\*

**115**

Subdivision/Lot Line  
Adjustments

**262**

Development

**150**

Stormwater Management

**34**

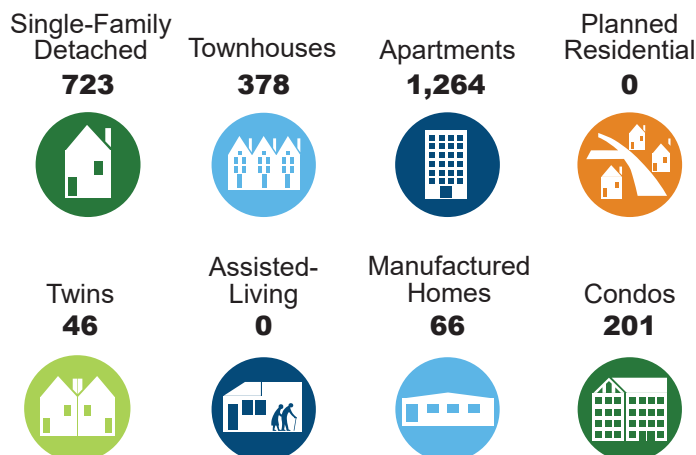
Municipal Ordinances,  
Maps and Plans

**4,381**  
Acres

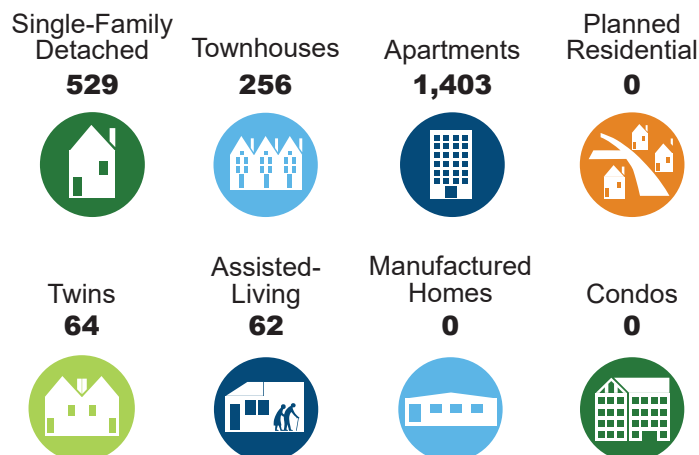
\*Includes preliminary and final plans

## Residential Development: 4,992 Total Units

### Lehigh County: 2,678 Units

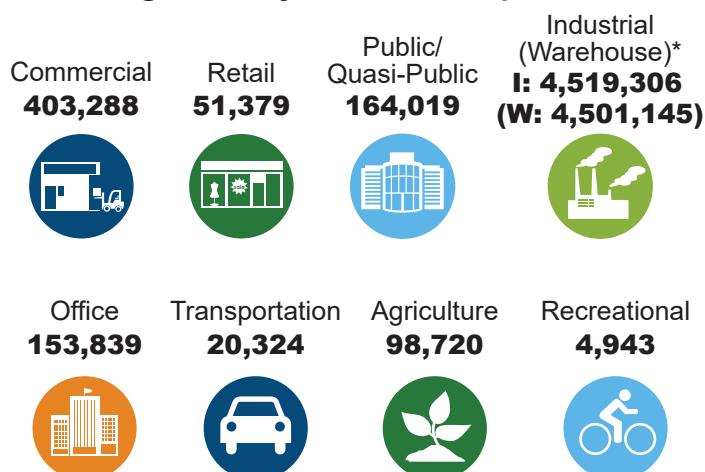


### Northampton County: 2,314 Units

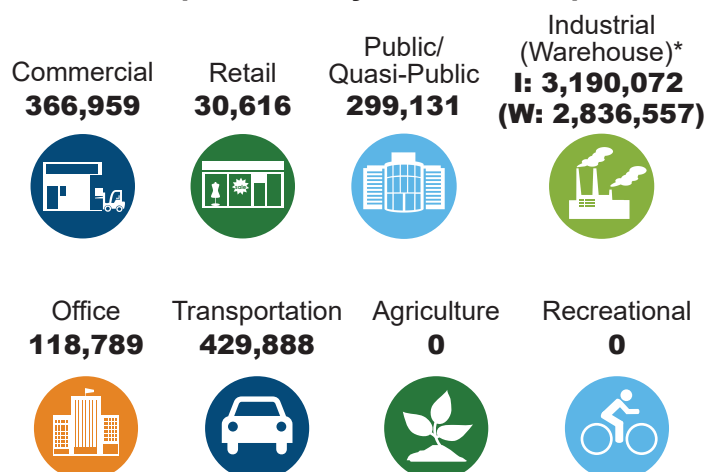


## Non-Residential Development: 9,851,273 Total Square Feet

### Lehigh County: 5,539,725 Square Feet



### Northampton County: 4,311,548 Square Feet



\* Warehouse number is a subset of industrial total square footage.