



SECURETEC
NEXT GENERATION SECURITY



911 INFORM

Safety for K-12 Education

School Safety & Compliance for K-12

Complete Solution

- » Compliance
- » Kari's Law
- » RAY BAUM'S Act
- » School Safety: Alyssa's Law — Upcoming state law*
- » Messaging & Notifications
- » SIS Integration
- » Panic Buttons — deskphones and virtual options available
- » Real-time two way communication between police & school personnel
- » Single pane of glass for ALL security & compliancy operations

911inform LDS



ACCESS FREE PANIC BUTTONS FOR YOUR MOBILE DEVICES

- 911 Calling
- Medical Emergency
- Silent Alarm
- Lockdown Building or Entire District
- Shelter in Place
- Fire
- Active Shooter
- Bomb Threat

**All Panic Buttons can be customized to your district's needs.*

* Sate law in NJ, FL, NY — Enacting in other states now

- Free to Police & Public Safety
- Gives Police Situational Awareness
- Reduces Response Time for Emergencies

Kari's Law



System must allow direct access to 911 without any access codes.



System must provide on-site notification that the call has occurred and from what station.

RAY BAUM'S Act



Any call to 911 must deliver a dispatchable location to the PSAP/ECC (Public Safety Answering Point/Emergency Communications Center)



Any call to 911 must deliver a dispatchable location to on-site personnel.

Alyssa's Law

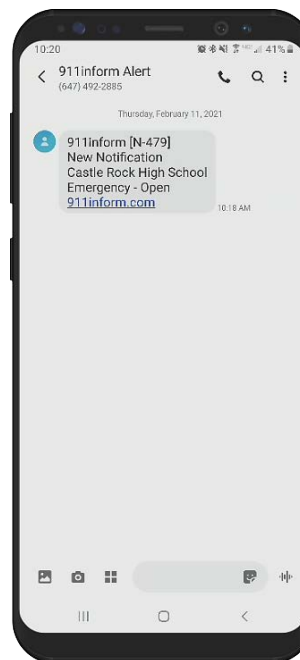


All public elementary and secondary schools to install either panic alarms or alternative emergency mechanisms approved by The Department of Education.

Cellular 911 Reporting

As a 911inform customer, we establish a Geofence of the property and submit it to the RapidSOS database. Supported smartphone devices within a Geofence will notify the PSAP/ECC that an emergency call has occurred within property limits.

Alerts sent to the school do not contain the phone number or other personal information about the caller, maintaining complete anonymity and privacy. The notifications are generated by the carrier network and the PSAP/ECC allows any device to call 911 within a Geofence without having a prior relationship. Each notification provides the school with information of where and when a call was placed and where with an overhead view of the property.



Sample Text Message to Personnel

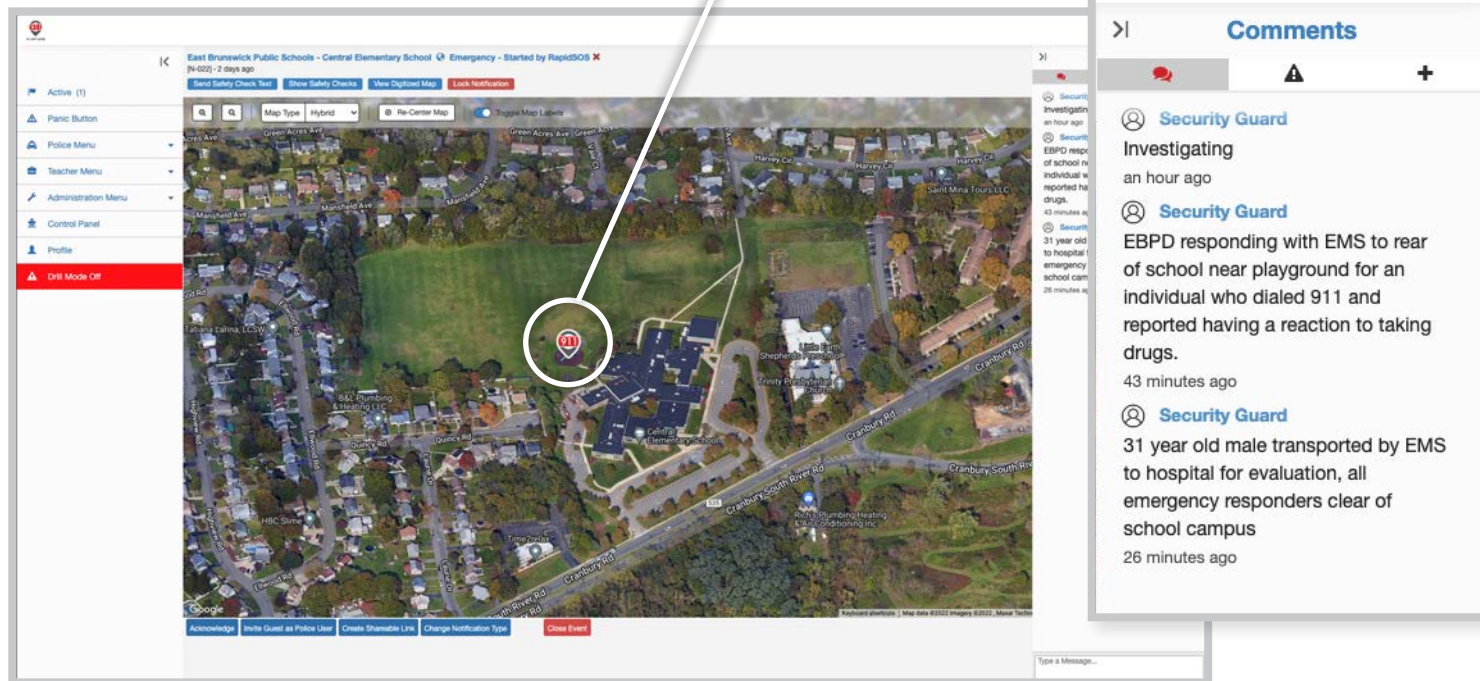


Sample Emergency Notification

Case Studies

» East Brunswick, NJ

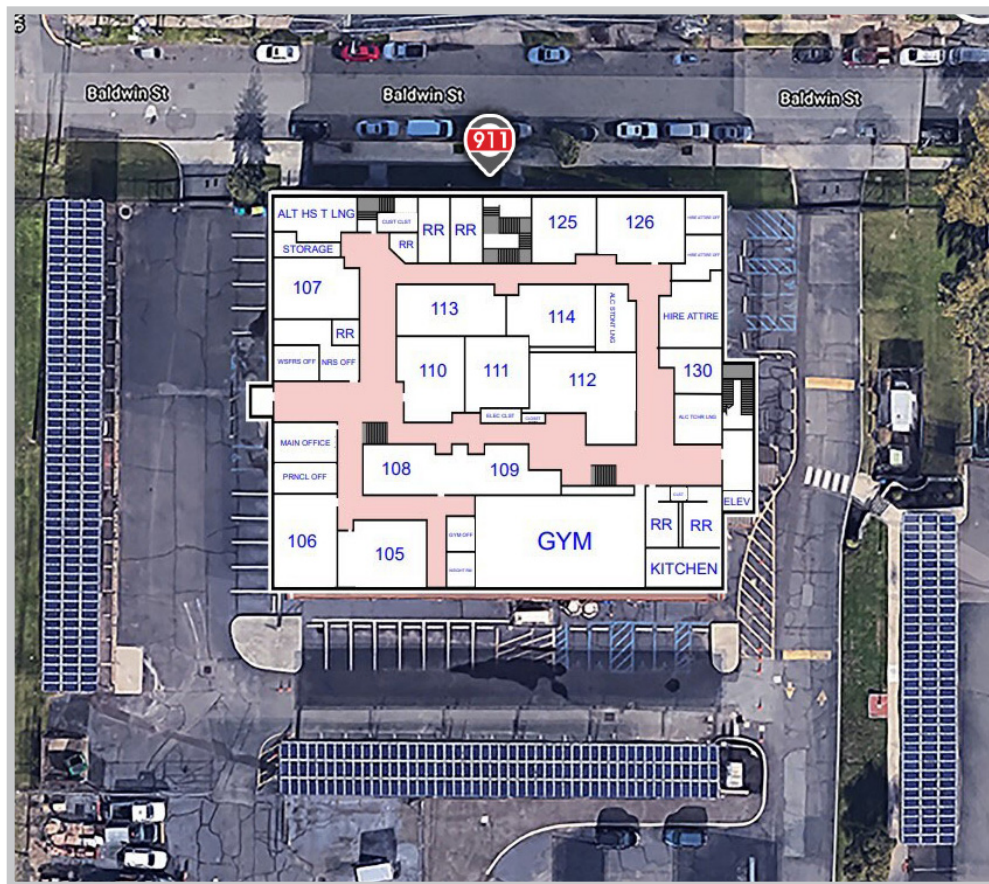
In the early morning of June 15, at approximately 12:29 a.m., the East Brunswick Police Department received a call originating at Central Elementary School. As a 911inform customer, our notification software triggered within their Geofence, which alerted the security administrator and local public safety. With our digitized maps, both parties were able to quickly locate the caller in distress. The officer on duty proceeded with a medical emergency calling for local EMS to take a young male to the hospital.



Case Studies Cont.

» New Brunswick, NJ

An older gentleman was out for a walk one afternoon around a local school in New Brunswick, NJ, and suddenly tripped on a piece of broken sidewalk. A passing vehicle witnessed the gentleman fall and not get back up. Dialing 911 from their vehicle, they contacted the local police for assistance. Meanwhile, the vehicle triggered the 911inform software, as the call was placed inside the school's 911inform Geofence. The security resource office on duty was able to aid the gentleman for 6 minutes before the police arrived.



Case Studies Cont.

» East Brunswick, NJ

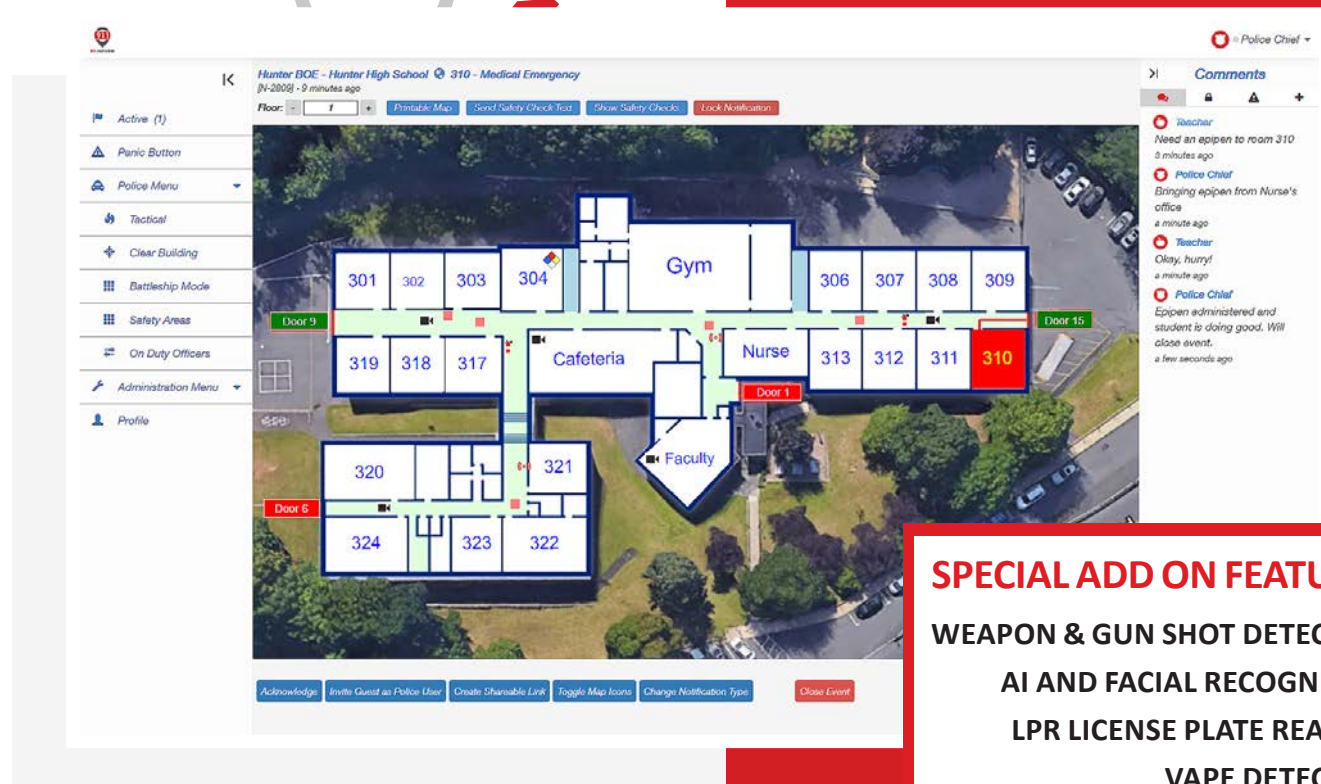
In the middle of a school day, a student suddenly started having a seizure in class. The teacher, acting quickly, called 911 for assistance. The school's phone carrier used the BTN, or billing telephone number, for the emergency address, which gave the police the location of the administration building 15 miles away from the school. As a 911inform customer, our software was triggered at the time of the call, alerting building security AND the local police with the correct address and the closest door to enter to get to the student in distress. With 911inform, the response time was cut by 15 minutes, the correct building/address was delivered to first responders, and our digitized maps displayed the fastest route to the emergency.



Connected Building Controls

- » PBX Phones
- » Camera Integration
- » Door Controls
- » Strobe Lights
- » Alarms
- » Voice Controls (Paging)
- » Speakers
- » SIS
- » Common Messaging Platform
- » Screen Pop
- » AEDs / Chemical / Fire Extinguishers
- » Battleship Mode
- » Clear Room Mode
- » Reunification
- » Safety Checks
- » Attendance Check-ins
- » Drill Mode
- » Emergency Event Types

INTERACTIVE Mapping overlaid on Google Maps



SPECIAL ADD ON FEATURES

WEAPON & GUN SHOT DETECTION
AI AND FACIAL RECOGNITION
LPR LICENSE PLATE READING
VAPE DETECTION

SCHOOL SECURITY & PUBLIC SAFETY FEATURES

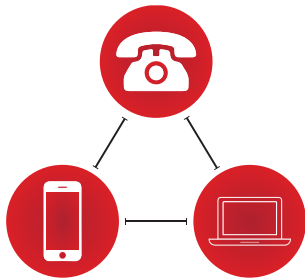
- Situational awareness inside the school
- Direct room intercom, monitor, and paging into the school
- Door and camera control from dispatch or patrol car
- Detailed interactive floor plan mapping
- Faculty and student location displayed on floor plan
- Missing student indicators and tracking
- Clear Building and report possible dangerous objects on the map
- Tactical Mode to easily view the perimeter of the building

SINGLE PANE OF GLASS
FOR ALL SECURITY
TECHNOLOGY NOW
AND FOREVER

911inform is fully customizable to fit the functionality needs of any campus and can be integrated with various systems.

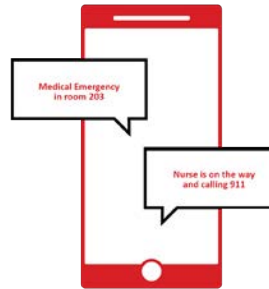
RAY BAUM'S ACT » KARI'S LAW » ALYSSA'S LAW

ALL THREE SOLVED WITH 911INFORM NG911 CAMPUS SAFETY



Compliance with Federal MLTS/PBX Legislation

Kari's Law & RAY BAUM'S Act
DETECT – LOCATE – REPORT



Cell Phone Notification

Notifications are instantly sent
of 911 calls from native dialer,
no app required



Connected Building

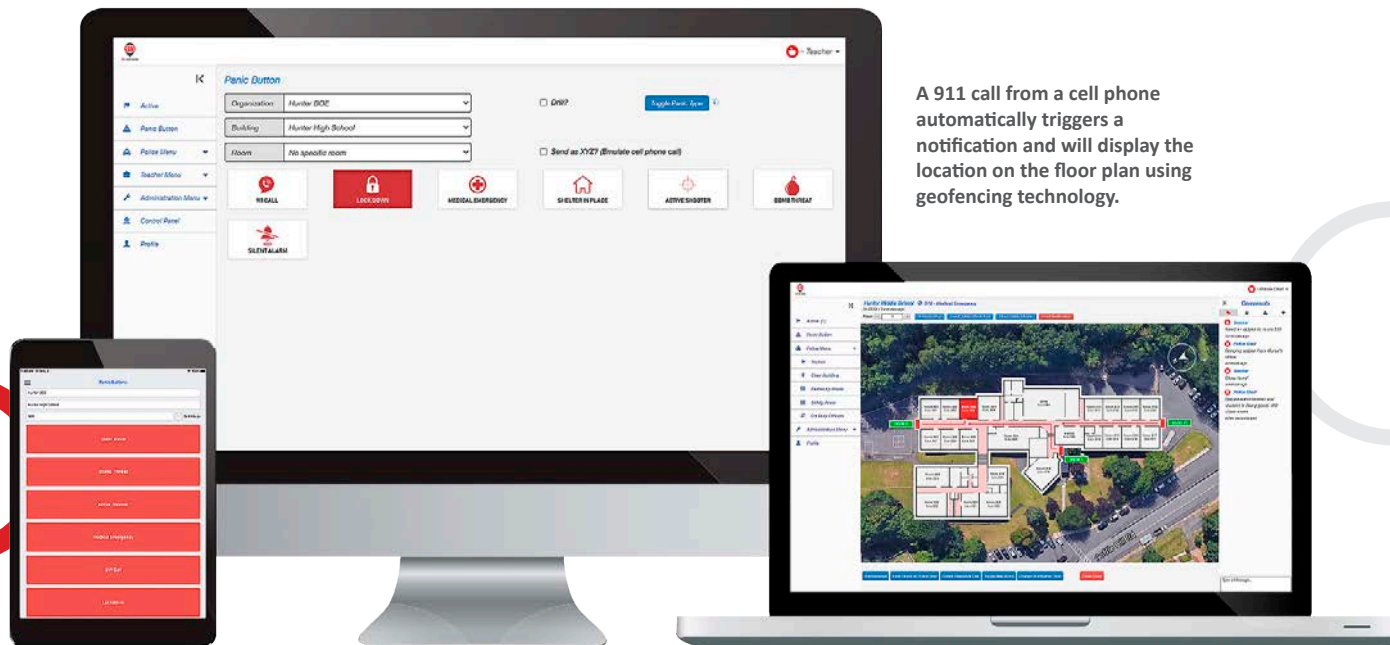
Connect to Door Access Controls,
Security Cameras, Alarms, Strobes,
Voice Controls, Paging, Facial
Recognition, Gun Shot Detection



About 911inform

911inform is a notification and emergency management solution providing state of the art tools to effectively mitigate ANY emergency situation. Our platform supports both school administration and emergency services with bi-directional communication and controls needed to successfully manage a crisis and save valuable time. Your on-site security, health professionals, or administration will immediately receive a text and/or email message, alerting everyone of an emergency. This opens a direct dialog of instructions while first responders are en-route.

Using our easy-to-use mass notification system, we allow the administration to instantly know the who, what, where, and when of any emergency. Your organization assigns permissions for each user list to maintain direction for each notification type. Our notifications provide the location of a call's origin, detailed maps of the premises, real-time communication with on-site personnel (including first responders), and remote control of a building's security systems (i.e., doors, strobes, intercoms, and cameras). With an easy-to-use application, no additional software downloads, or unnecessary equipment, 911inform can help monitor your entire organization.



A 911 call from a cell phone automatically triggers a notification and will display the location on the floor plan using geofencing technology.



SECURETEC
NEXT GENERATION SECURITY



911 INFORM

CONTACT

Dan Speigal

dspeigal@securetec911.com

216.208.9718

securetec911.com