



THE QUINATE
multifamily collection

AN EXCLUSIVE SOUTH BOSTON OFFERING



THE LEGACY

United Multi Family and Red Dome Realty are pleased to present the exclusive South Boston Legacy Investment opportunity, **The Quinate**. This five building, twenty-seven unit multifamily portfolio is a rare offering in what has become the most desirable neighborhood for young professionals in the city of Boston. It's no secret, the South Boston Class B+ residential market is considered to be white-hot in the eyes of local investors. There is an extremely strong, continued demand for quality working-class multifamily rentals in Southie and the Seaport - and this value play will surely grab the attention of investors near and far.



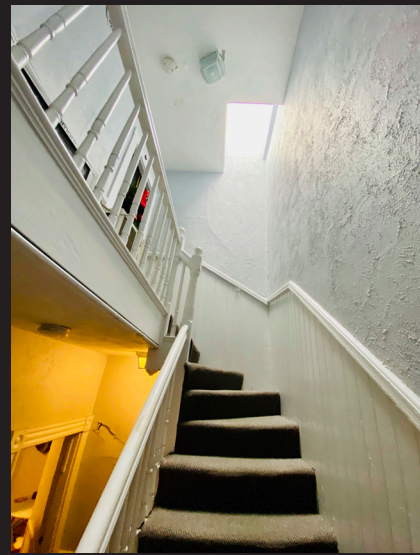
COLLECTION



OFFERED BY









EXCEPTIONALLY MAINTAINED. IDEALLY LOCATED.



RARE OPPORTUNITY
TO PURCHASE
SEVERAL HIGH
GROWTH PROPERTIES



5 BUILDING,
27 TOTAL UNITS
INVESTMENT



MBTA BUS #9
WITHIN STEPS OF
ALL PROPERTIES



550 **EAST 3RD**

550 East 3rd Street, South Boston is comprised of 3 units (2 two-bedroom and 1 one-bedroom). Unit 3 was originally a two bed, but now stands as a large 1 bed. The property was originally gut-renovated and converted to residential in 2000. Its location is a mere 350 feet from bus stop located at the corner of East Broadway and K St. Commuters can take the #9 bus to Broadway Station in less than 15 minutes. The property benefits from its convenient location to Stop&Shop, Walgreens, and the vibrant night life on East Broadway.

ONE **SCHREPEL**

One Schrepel Place is comprised of 12 units (7 two-bedroom and 5-one bedroom). The property was originally built in 1920 and renovated over the years. The property offers 8 off-street parking spots for additional income. Being located directly behind 550 E 3rd St, this property boasts the same amenity benefits and commuter options in this dynamic location of South Boston.

84 **EMERSON**

84 Emerson Street is comprised of 3 units (2 two-bedroom and 1 one-bedroom). The property was originally built in 1890 and renovated over the years. The building is located less than 250 feet from the bus stop at the corner of East Broadway and H St and allows commuters to catch MBTA bus #9 to Broadway Station in roughly 10 minutes. The Emerson Street location is prime for residents looking to benefit from all of the shops, restaurants and amenities along East and West Broadway.

167 **K STREET**

167 K Street, South Boston, MA is comprised of 3 units (3 two-bedrooms). The property includes a common area roof deck, in a 1905 building, which has been renovated over the years. Located around the corner from 550 E 3rd and Schrepel Pl, this building is just over 500 feet from the same MBTA bus #9, with door to door service to Broadway Station in under 15 minutes.

722 **EAST 6TH**

722 E 6th Street (aka 151 N St per public record) is comprised of 5 one-bedrooms and 1 two-bedroom with unit 3R recently converted from a 2 bed to a large 1 bed. Located in the City Point section of South Boston, this brick building was constructed in 1899 and has been renovated over the years. Commuters can get to Broadway Station in under 20 minutes by taking the MBTA bus #9 at the corner of East Broadway and N Street - or the MBTA bus 11 at the corner of East 8th Street and Columbia Road.



THE QUINATE
multifamily collection

PROUDLY OFFERED BY



View the full offer at www.thequinate.com