

Shandong JK Machinery Co., Ltd

Crawler Dumper Instruction Manual





Instruction

Thank you for purchasing the Crawler Dumper produced by Shandong JK Machinery Co., Ltd.




- ❖ **Shandong JK Machinery Co., Ltd.. reserves the right to change the content of this manual without prior notice, and does not assume any legal responsibility.**
- ❖ **This manual should be regarded as part of the truck, should be transferred together with the resale.**
- ❖ **The products sold at each stage may not be consistent with the manual, please refer to the actual product when purchasing.**

Safety Information

Your safety and the safety of others is very important. We have provided important safety information in the manual and on the machine. Please read them carefully.

The safety messages warn you of potential hazards that could harm you and others. Each safety message is preceded by the safety symbol and the safety words: DANGER, WARNING, CAUTION.

Please pay particular attention to the statements in these quotes:

	DAN	Failure to follow instructions can result in serious
	GER:	injury or even death.
	Warn	Failure to follow instructions may result in equipment

You will also find other important information indicated by "CAUTION".

Safety precautions:



- ❖ If the transporter is operated according to the instructions, it will operate safely and reliably as designed. Read and understand this instruction manual carefully before operating the transporter or injury to personnel or damage to

- ❖ Due to the continuous improvement of the model, the photo illustrations in the book may differ from the real thing.

Table of Contents

1. Product Introduction	1
2. Product Features	1
3. Product Structure	2
4. Usage	4
5. Maintenance	6
6. Safety Instructions	6
7. Technical Parameters	7
8. Fault Check	7
Warranty Certificate (User Copy)	9
Warranty Certificate (Dealer Copy)	10
Warranty Certificate (Manufacturer Copy)	11

Shandong JK Machinery Co., Ltd. is a set of design, research and development, production and sales of crawler dumper integrated company, the company's products are sold at home and abroad, trusted by consumers. Crawler Dumper project was established with the intention of "serving customers, serving the production, liberation of labor, improve work efficiency".

The company has always adhered to the "products affordable, durable principle", and strive to achieve industry-leading, to meet the needs of the majority of users, not only let the customer to buy, but also to let the customer with the affordable!

The company produces crawler dumper, solves the problem of mechanization of the whole process of loading and unloading of goods, saves time and energy and more money, is the ideal, practical production tools.

一、 Brief introduction of the product

Crawler dumper replaces the traditional wheeled walking with rubber tracks and other crawler walking system, with large carrying capacity, strong grip, low noise, while the crawler walking device increases the contact area between the machine and the ground, without harming the concrete and asphalt, with good driving and passing performance, can adapt to muddy field roads, rugged mountain roads, soft grass, forests and deserts, slippery ice and snow and other complex and harsh road conditions, in agriculture, forestry and other areas, and can be used in the agricultural and forestry industry. Rough road conditions, widely used in agriculture and forestry orchard transportation, orchard lifting and picking, cargo yard loading, water conservancy construction, infrastructure projects, mining sites.

二、 Product Characteristics

- 1、 Wide range of use, simple structure, smooth transmission, labor-saving operation, easy to realize automatic control.**
- 2、 Suitable for swamps, beaches, deserts, paddy fields, tropical rainforests, mountains and snow and other complex road conditions.**
- 3、 single-cylinder air-cooled power system, simple structure, easy maintenance, low fuel consumption, low maintenance costs.**
- 4、 High traction, good climbing and gripping performance, strong transportation capacity.**
- 5、 Stable center of gravity, small turning radius, flexible maneuverability, especially adapted**

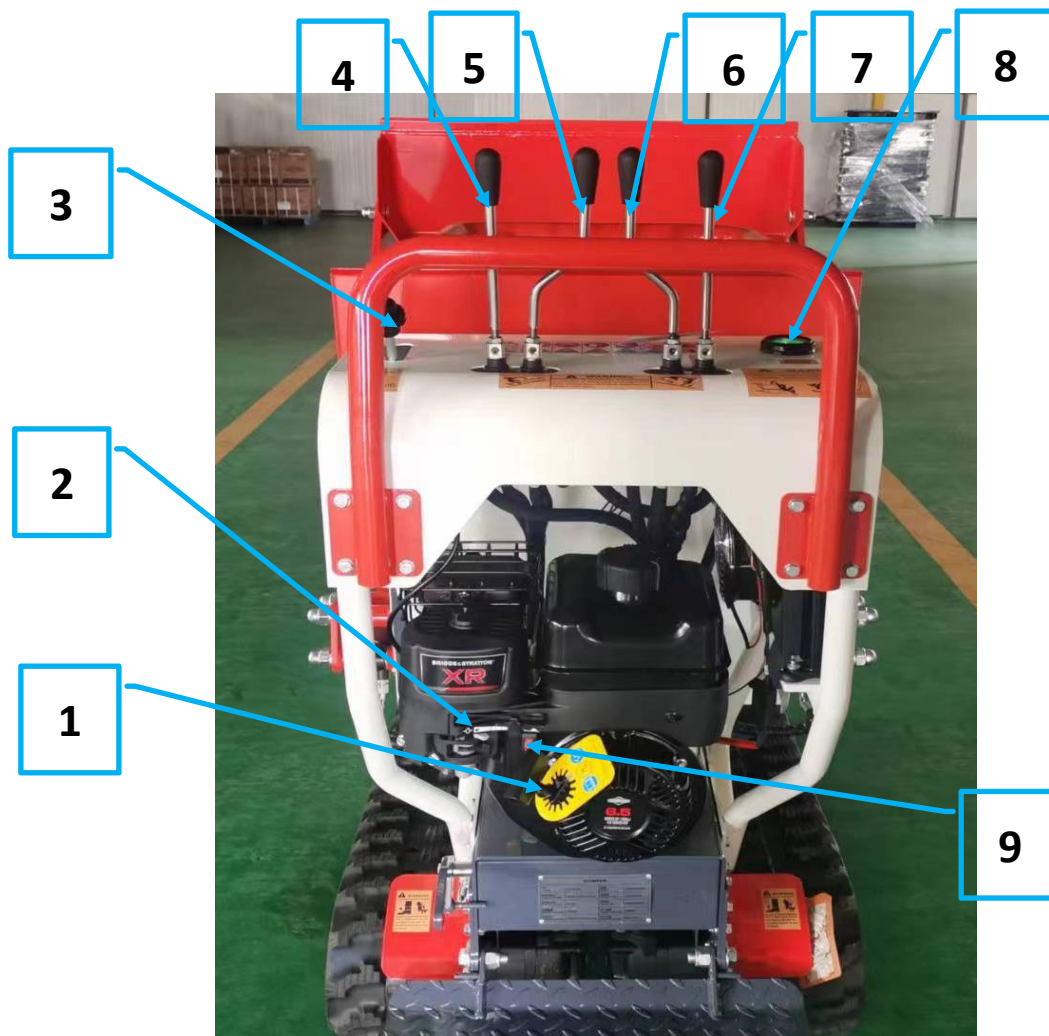
to the narrow site, reducing the cost of building roads.

6、 Equipped with hydraulic lifting and lowering, self-loading and self-unloading functions, reducing labor intensity and improving transport efficiency.

7、 Widely used in the transportation of engineering materials and equipment, construction sand and gravel, bricks, mountainous areas of timber, fruits and vegetables, seedlings, flower nurseries and a variety of complex road conditions such as handling purposes.

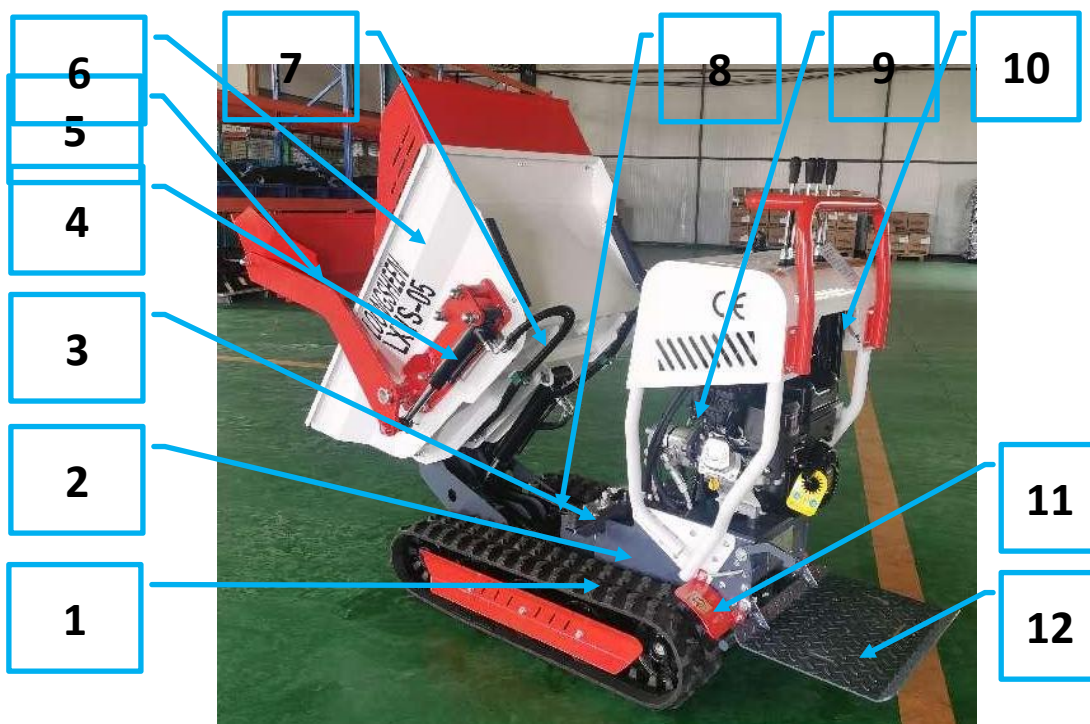
三、 Product structure

1、 Manipulation diagram



- | | | |
|-------------------------------|------------------------------|-------------------------------|
| (1) Engine hand-pulled disk | (2) Engine damper | (3) Throttle wrench |
| (4) Push shovel lifting lever | (5) Left motor control lever | (6) Right Motor Control Lever |
| (7) Hopper Lift Lever | (8) Hour meter | (9) Ignition switch |

2、Schematic diagram of structural components



- | | | |
|--------------------------|---------------------|--------------------------|
| (1) Crawler | (2) Frame | (3) Hydraulic oil tank |
| (4) Push shovel cylinder | (5) Shovel | (6) Protective plate |
| (7) Hopper | (8) Dumper cylinder | (9) Maneuvering platform |
| (10) Handrail | (11) Mudguards | (12) Pedal |

四、 Usage

1.Inspection and refueling

1.1 Check whether the connecting bolts are loosened and whether the electrical parts connecting wires are intact.

1.2 Check whether the operation of each handle of the manipulation system (throttle handle, shovel handle, left and right motor handles, hopper handle) is flexible and whether there is any in-place situation and remove it.

1.3 Place the gear lever in neutral

1.4 Oil refueling: place the whole machine on the horizontal surface of the road, add high-quality gasoline to the engine gasoline tank, add the national standard motor oil to the oil holes; add No. 32-46 anti-wear hydraulic oil to the hydraulic system.

2.Starting steps

(1) Check whether the engine ignition switch is on, ON is correct.

(2) Open the throttle cable switch to more than halfway.

(3) Open the gasoline engine damper, hand grasp the main handle. Pull it outward and close the gasoline engine damper after starting.

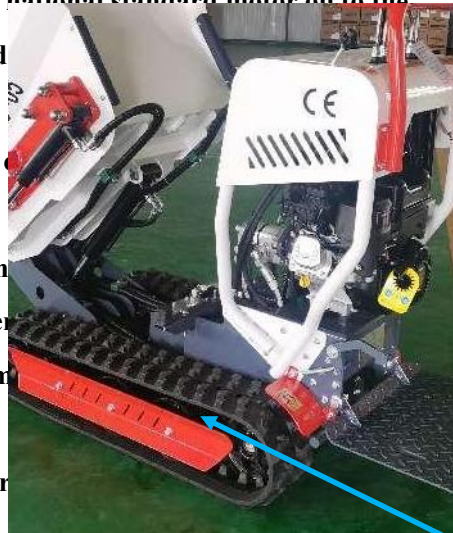
3.According to the function indicated in the control scheme, operate the machine

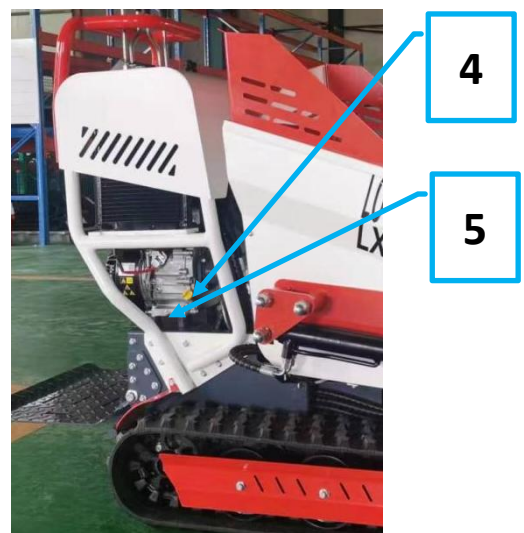
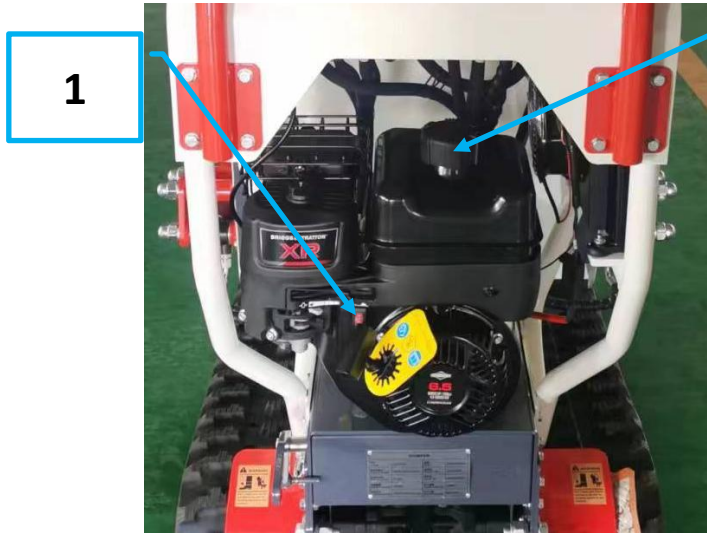
(1) forward and reverse, turn; (2) push shovel and hopper

4.Shutting down the machine

(1) Push shovel and hopper retract and transfer vehicle to proper position;

(2) Throttle to minimum, turn off the ignition switch, OFF for off.





(1) Ignition switch

(2) Gasoline filling port

(3) Hydraulic oil filler

(4) Oil filling port

(5) Oil discharge port

5.Lubricating grease filler



五、Maintenance

*Elements of engine maintenance (please read the engine manual for details)

1, the first twenty hours to change the oil, and then according to the use of time according to

the manual requirements for replacement

2, oil selection of national standard gasoline engine special SD40 or SF level

3, dry air filter according to the amount of dust three to five days to take out and blow once.

4, the oil is normally added to one-third of the oil scale, about two-thirds of the oil scale tightened

7, the fuel tank cover must be tightened after refueling, to avoid diesel into the water engine white smoke

8, the new machine low-speed high-speed break-in for one hour, daily use, do not long to speed state

9、 The environment must be well ventilated.

***Crawler chassis maintenance elements**

1、 Complex and bumpy road conditions, pay attention to avoid sharp objects scratches, do not squeeze cans

2、 Adjust the track loosening and tightening according to the road condition, in order to prevent the track from loosening too much or too tightly damaging the track.

3、 Regularly check the screws and bearings of fixed driving wheels, load bearing wheels and guide wheels.

4.Clean the hard objects in the track in time to avoid wear and tear.

六、 Safety instructions

Safe use of this machine must pay attention to fire prevention, anti-virus, prevent machine accidents, must be ideologically vigilant, before use must carefully read the operating instructions, regular maintenance of the machine, please standardize the use.

-This machine is strictly prohibited to modify, prohibited to carry people, prohibited overloading, prohibited in the road, indoor and other closed places to use. This machine uses gasoline as natural material, it is prohibited to ignite or smoke beside the diesel engine; it is prohibited to add or pour out the fuel under the working condition.

-When operating the machine, do not touch the engine with both hands to avoid burns, and it is strictly prohibited to put the head, hands and other body parts into the rotating parts.

-It is forbidden to start, accelerate, turn and brake sharply, which will easily cause overturning and skidding to hurt the operator.

-In the slope is not more than 20 degrees on the road, the loading shall be controlled

within the permissible load, overloading is strictly prohibited; in the slope is more than 20 degrees on the road, please drive empty, not in the slope more than 25 degrees on the road, not in more than the permissible load and ramp conditions change gear.

New machine break-in period of 60 hours, it is recommended to reduce the load by half during the break-in period, which is conducive to prolonging the life of the machine. Check the track every day to adjust to the appropriate tightness, clean up the debris in time and do not have oil, and pay attention to not squeeze the can, sharp objects damage during traveling.

-Check carefully whether the bolts of each part are tightened appropriately and whether the operating lever is flexible to ensure that the machine is in a safe working condition before every day's operation.

Please store it in a place where minors can not touch it to avoid accidents.

七、 Technical Parameters

Serial number	Model	Engine Model	Crawler specification	Hopper capacity
1	500	Bailiton 130G	180x60x38	0.22m ³

八、Fault checking

Fault	Fault Cause	Treatment
Machine does not start	Wires are not in good contact	Check wiring and tighten
	Throttle switch not open	Open throttle switch more than halfway
	Gasoline burned out, air in fuel line	Exhaust air
	Motor slips, poor motor contact	Check motor
	Air filter not cleaned regularly, poor air intake	Clean air filter or replace with new one
	Too little oil, pulling shingles	Replacement of shingles
White smoke	Poor quality gasoline, water	Drain and refill with good quality gasoline
Black smoke	The working environment is dusty and the intake pipe is clogged.	The intake pipe should be cleaned frequently, be careful not to drop screws into it, it will break the cylinder.
	Dirty oil, poor lubrication	Replace the national standard SD40 or SF grade oil.
	Overloading power is not enough	Do not overload
	Gasoline quality is not good, insufficient combustion	Replace gasoline
Blue smoke	Too much oil, burning oil	Add oil to one-third of the oil dipstick (Two thirds after tightening)
	Air filter element too dirty	Clean or replace
	Problems with the engine	Contact the manufacturer

-7.Maintenance record

This three-package card as a record of the enjoyment of Fengmao service, the use of the user is satisfied with the service, please stamp or sign the recognition, service is not satisfactory, the user has the right to refuse to sign. Please keep this record properly and do not alter it.

Product Model:		Machine No:		
Date of purchase: Year Month Day		Place of Purchase:		
User Name:		Phone:		
Date of Repair	Fault and its troubleshooting process record	Specification	Repairer's seal	User's signature

Warranty certificate(user's joint)

- 1.Please keep the warranty certificate carefully.
- 2.Please read the contents of the warranty certificate and the warranty regulations carefully.
- 3.When you receive the warranty certificate from the store where you purchased the product, be careful to ask the store to fill in the necessary items in the warranty certificate as required.

Product name		
Model		
Track number		
Frame number		
Engine number		
Date of shipment		
Purchase Date		
User	Name	
	Address	
	Phone Number	
	Main Use/Place	
Store	Name of the store	Seal
	Address	
	Phone number	

Factory after-sales service phone.

Note: This voucher will be kept as important user information, so users must fill out this voucher carefully, please present the three packages of service card when warranty.

Warranty Certificate(Dealer's Union)

- 1.Please keep the warranty voucher carefully.
- 2.Please read the contents of the warranty and the warranty regulations carefully.
- 3.When you receive the warranty certificate from the store where you purchased the product, please be careful to ask the store to fill in the necessary items in the warranty certificate as required.

Product name		
Model		
Track number		
Frame number		
Engine number		
Date of shipment		
Purchase Date		
User	Name	
	Address	
	Phone Number	
	Main Use/Place	
Store	Name of the store	Seal
	Address	
	Phone number	

Factory after-sales service phone.

Note: This voucher will be kept as important user information, so users must fill out this voucher carefully, please show the three packages of service card when warranty.

Warranty Certificate(Manufacturer's Union)

- 1.Please keep the warranty voucher carefully.
- 2.Please read the contents of the warranty and the warranty regulations carefully.
- 3.When you receive the warranty certificate from the store where you purchased the product, please be careful to ask the store to fill in the necessary items in the warranty certificate as required.

Product name		
Model		
Track number		
Frame number		
Engine number		
Date of shipment		
Purchase Date		
User	Name	
	Address	
	Phone Number	
	Main Use/Place	
Store	Name of the store	Seal
	Address	
	Phone number	

Factory after-sales service phone.

Note: This certificate will be kept as an important user information, so users must fill in this certificate carefully, please show the three packages of service card when warranty.