

# *Remote control lawn mower product manual*



**Thank you for purchasing this product.**

*Please be sure to read this manual before use to ensure correct use. Please keep it safe after reading and read it again when necessary.*

# Table of contents

1. Precautions for safe use-----	<a href="#">Page 3-4</a>
2. Machine introduction-----	<a href="#">Page 5</a>
3. Remote control function introduction-----	<a href="#">Page 5</a>
4. How to add engine oil-----	<a href="#">Page 6</a>
5. How to add engine gasoline-----	<a href="#">Page 6</a>
6. How to charge the machine's battery-----	<a href="#">Page 7</a>
7. How to start the engine-----	<a href="#">Page 8-10</a>
8. How to stop the engine-----	<a href="#">Page 11</a>
9. How to clean the air filter-----	<a href="#">Page 12</a>
10. How to change engine oil-----	<a href="#">Page 12</a>
11. How to replace the blade-----	<a href="#">Page 13</a>
12. How to mow grass on a slope-----	<a href="#">Page 14</a>
13. How to get off the bus-----	<a href="#">Page 15</a>

What should I do if I encounter the following problems?

14. How to deal with the problem that the engine is not easy to start-----	<a href="#">Page 16</a>
15. How to deal with white smoke coming out of the engine----- -----	<a href="#">Page 16</a>
16. How to handle a rollover accident-----	<a href="#">Page 17</a>

## Precautions for safe use

### *For safe use*

- *Operation requires sound judgment.*
- *Do not put feet in mower.*
- *Do not use if you are drinking alcohol, sleep deprived, pregnant, under the age of 16, overworked or ill.*
- *In order to prevent accidents caused by scattered objects, operators should wear suitable clothing for their work, and protective equipment such as protective glasses, protective hats, gloves, and non-slip safety shoes.*
- *When checking, repairing, adjusting, cleaning or refueling, be sure to turn off the engine and do it on a flat place.*
- *Do not use any cutting blades other than those provided.*
- *Do not touch the engine, muffler, etc., as they become very hot during operation and immediately after stopping.*
- *Please confirm that the electrical wiring is normal before use, if the coating is torn off, please do not use it, because there is a risk of short circuit.*
- *Stop the engine when refueling.*
- *If fuel or oil has spilled, wipe it up.*
- *When moving the lawn mower, please make sure there are no people or animals around, and pay attention to safety.*
- *Before mowing, check the entire work area you are mowing and remove any bouncing objects such as rocks, glasses and empty cans.*
- *Do not let your children operate it.*
- *Do not use it for other purposes (mowing grass).*
- *Before operating, make sure there are no other radio interference waves.*
- *Do not use near flammable substances or sources of ignition.*
- *Do not use in the rain.*
- *Do not modify mower body or remote control. It may affect safety or shorten function or life.*
- *Do not leave equipment with engine running.*
- *Keep children away from the equipment as it is dangerous during inspection, maintenance and work.*
- *Before operating the device for the first time, perform a test run to check the status of the remote control and the device.*
- *Do not start the engine if there are people or vehicles nearby.*
- *Avoid obstacles such as puddles, tree stumps, stones and pipes.*
- *When the device is in operation, it will bounce off grass, stones, branches, empty cans, etc., which is dangerous. Please do not stand near the device.*
- *Always stop the engine and check the equipment if it hits a hard object such as a stone or concrete.*
- *Be sure to get used to operating the remote on level ground before mowing on slopes.*
- *Do not stand directly under or near the machine as it may slip when driving on a high slope.*
- *When the ground is soft or wet, the track may sink and slip, please operate with care.*

- Do not use if visibility is poor due to fog or rain. Always work within the line of sight of the device.
- Do not use bent, deformed or damaged blades.
- If you lose control while operating the radio controls, stop the engine.
- Do not touch the device after rotating the blade, otherwise your hands or clothes may be caught in the rotating part and you may be injured.
- Do not use if battery fluid leaks.
- If battery fluid gets in your eyes or touches your skin, wash it out with plenty of water and see a doctor immediately.
- This device is not intended to be driven on public roads. Please use a car when moving.
- When placing the device on a vehicle, secure it so that it does not move.
- It is better to put the remote control and the main unit in different places to avoid malicious operations.
- Always follow warnings and cautions on labels.

#### *Precautions for use*

\* Tighten the screws and bolts of each part for each operation. Also, make sure there are no loose or missing wires and wiring.

*please confirm.*

\* Due to the loosening of screws and bolts due to vibration during use, and poor contact, please check in time, otherwise it may cause equipment failure or damage.

\* If you drive for a long time with only the motor running, the remaining battery power will decrease significantly, and you may not be able to run it because it does not generate electricity.

• To avoid overheating and damage to parts, we recommend that you allow the unit to rest for 10 minutes when refueling. After the equipment is filled with oil, it can work continuously for about 1 hour before refueling.

• Before first use, please charge for 3-6 hours until fully charged.

• Please start up the equipment in the correct sequence to avoid damage to the equipment.

• Before turning on the remote control, please make sure all the buttons on the remote control are in the original state (middle position), otherwise the signal cannot be received normally.

• When adjusting the height of mowing blades and dozer blades, please adjust the relevant operating levers to the appropriate height and then return to the middle position.

• Be sure to use the supplied charger when charging the battery.

• Please replenish the specified amount of gasoline and engine oil before use.

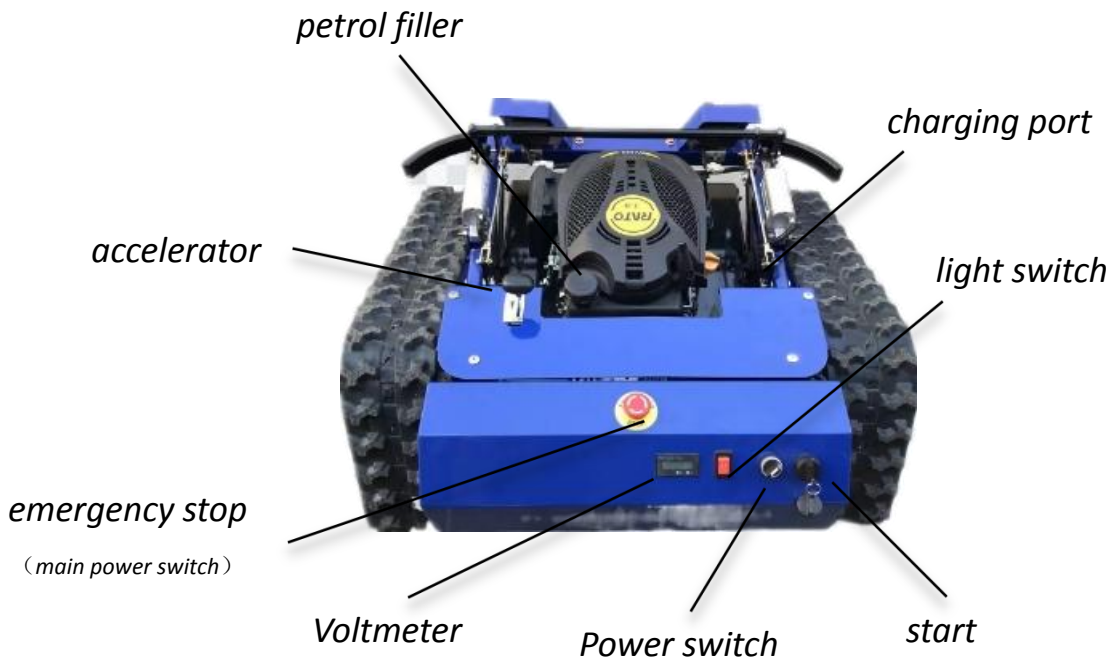
· Check the condition of gasoline, oil and battery before use after long-term storage.

• Do not let the remote control get wet from rain, etc., as it may cause a malfunction.

• When storing, turn off the power switch of the equipment and battery, and remove the mud and dirt attached to the main body, engine, electric control box, etc.

· Be aware that lack of oil may result in engine damage.

## Machine introduction



## Remote control function introduction



*The remote control uses 4 AA batteries*



## How to add engine oil

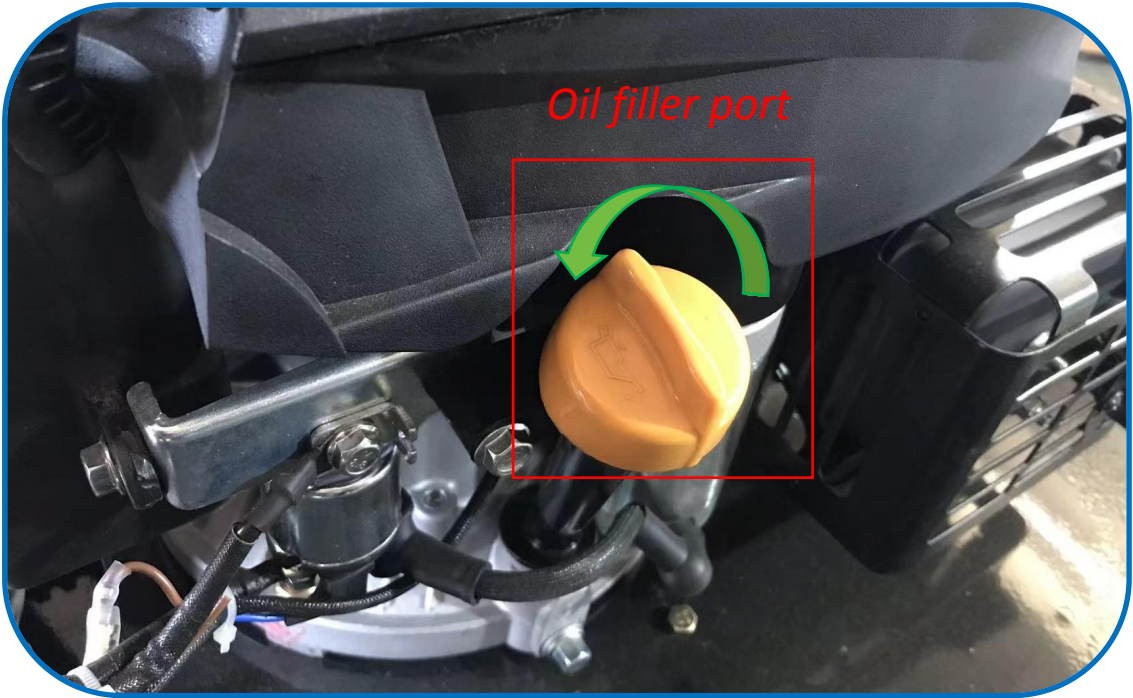
*.Please add 15W-40 engine oil, the oil tank capacity is 0.6L.*

*.Please fill the engine oil with a suitable tool.*

*.Please fill to the appropriate position, not too little or too much, please refer to the scale of the engine oil dipstick.*

*\*If the temperature is not within the range of -20°C to 40°C, please choose another oil.*

*\*When using it for the first time, first check the oil level.*



## How to add engine gasoline

*.Please fill with 88# unleaded gasoline (US standard) or 95# unleaded gasoline (EU standard). The gasoline tank capacity is 1.2L.*

*.Please fill up the gasoline using a suitable tool.*



## How to charge the machine's battery

1. Just received the machine, it is recommended to charge the machine for 5-8 hours.
2. When the machine is left unused for a long time, it is recommended to charge the machine every 5 days.

*Step 1, insert the plug*



*Step 2, plug in the power*



*Step 3 , The red light is on and charging is in progress*



*Step 4 , The green light is on and it is fully charged.*



### *Attention:*

- When the voltage of the 24V battery is lower than 21V, please charge it in a timely manner.
- \*Do not walk for a long time without starting the engine



## How to star the engine

*Three ways to start the engine :*

*1. Manual start   2. Key electric start   3. Remote control startup*

### *1. Manual start*

*Step 1 , Turn on the emergency stop switch*

*Step 2 , Increase the accelerator*

*Step 3 , Turn on the key (electric start engine)*

*Step 4 , Pull the starting rope vigorously to start the engine (in cold weather, pull it a few more times)*

*Step 5 , Turn on the power switch*

*Step 6 , Turn on the remote control switch*

*Step 1 , Turn on the emergency stop switch*



*Step 2 , Increase the accelerator*



*Step 3 , Turn on the key*



*Step 4 , Pull the starting rope vigorously to start the engine*



*Step 5 , Turn on the power switch*



*Step 6 , Turn on the remote control switch*





# How to star the engine

Three ways to start the engine :

1. Manual start 2. Key electric start 3. Remote control startup

## 2. Key electric start

Step 1 , Turn on the emergency stop switch

Step 2 , Increase the accelerator

Step 3 , Turn on the key and turn it to the right again to start the engine (electrically start the engine)

Step 4 , Turn on the power switch

Step 5 , Turn on the remote control switch

Step 1 , Turn on the emergency stop switch



Step 2 , Increase the accelerator



Step 3 , Turn on the key and turn it to the right again to start the engine



Step 4 , Turn on the power switch



Step 5 , Turn on the remote control switch



# How to star the engine

Three ways to start the engine :

1. Manual start 2. Key electric start 3. Remote control startup

## 3. Remote control startup

Step 1 , Turn on the emergency stop switch

Step 2 , Increase the accelerator

Step 3 , Turn on the key (electric start engine)

Step 4 , Turn on the power switch

Step 5 , Turn on the remote control switch

Step 6 , Press forward the engine start button on the remote control

Step 1 , Turn on the emergency stop switch



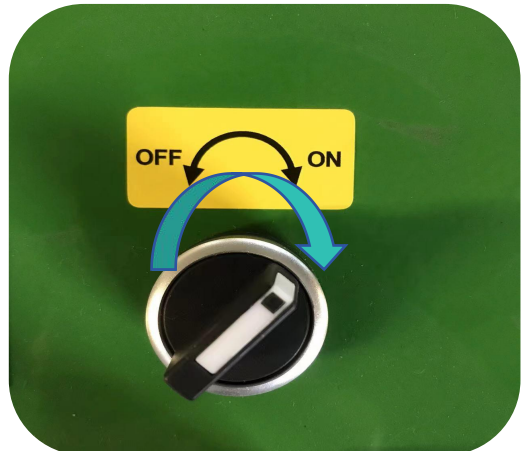
Step 2 , Increase the accelerator



Step 3 , Turn on the key



Step 4 , Turn on the power switch



Step 5 , Turn on the remote control switch



Step 6 , Press forward the engine start button on the remote control





## How to stop the engine

*How to stop the engine:*

*Remote control stops*

*Step 1 , Press the engine stop button on the remote control*

*Step 2 , Turn off the start key*

*Step 3 , Turn off the power switch*

*Step 4 , Turn off emergency stop switch*

*Step 5 , Turn off the remote control switch*

*Step 1 , Press the engine stop button on the remote control*



*Step 2 , Turn off the start key*



*Step 3 , Turn off the power switch*



*Step 4 , Turn off emergency stop switch*



*Step 5 , Turn off the remote control switch*



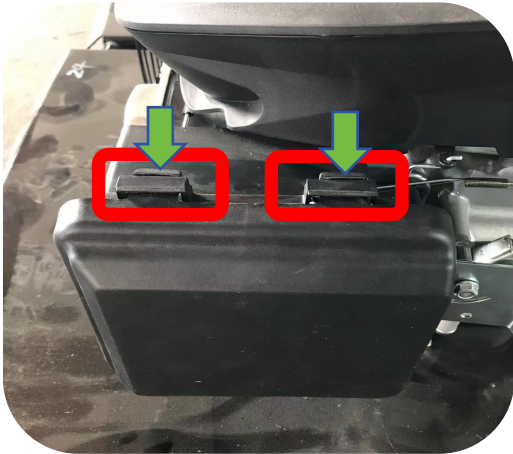
## How to clean the air filter

*The air filter element should be cleaned every 10 hours and replaced every 80 hours thereafter.*

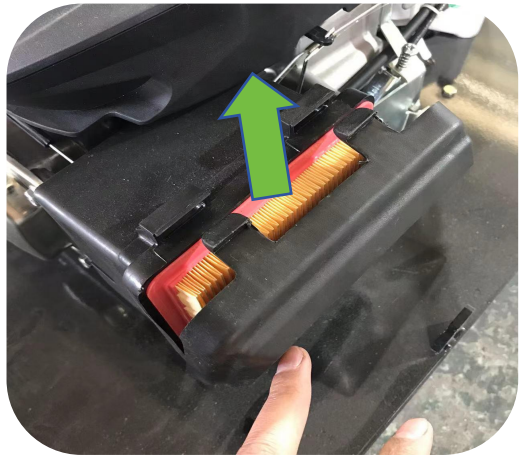
*Step 1 , Open the air filter unit box*

*Step 2 , Take out the air filter element and clean or replace it*

*Step 1 , Open the air filter unit box*



*Step 2 , Take out the air filter element and clean or replace it*



## How to change engine oil

*Engine oil should be changed every 15 hours for the first time and every 50 hours thereafter.*

*Step 1 , Remove the oil drain screw and drain the oil*

*Step 2 , Wait for the waste oil to drain out, then tighten the screws*

*Step 3 , Add new engine oil*



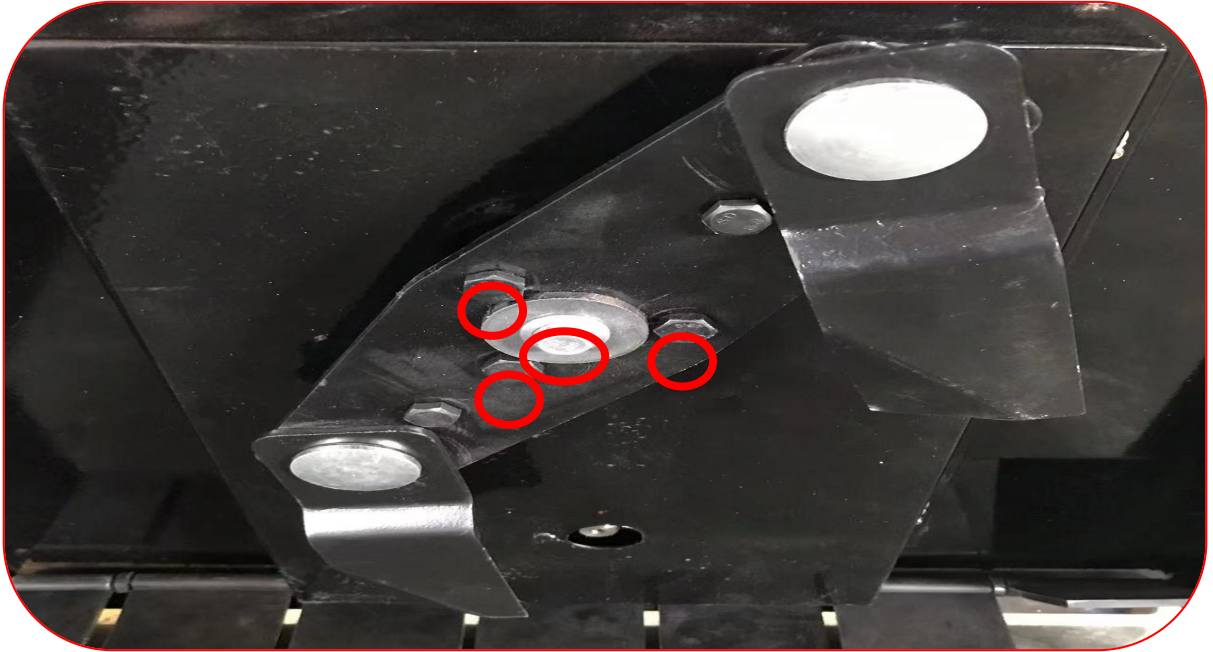


## How to replace the blade

*Step 1 , Remove the fixing bolts*

*Step 2 , Remove the blade fixing nut, replace the blade with a new one and re-fix it*

*Step 1 , Remove the fixing bolts*



*Step 2 , Remove the blade fixing nut, replace the blade with a new one and re-fix it*



## How to mow grass on a slope

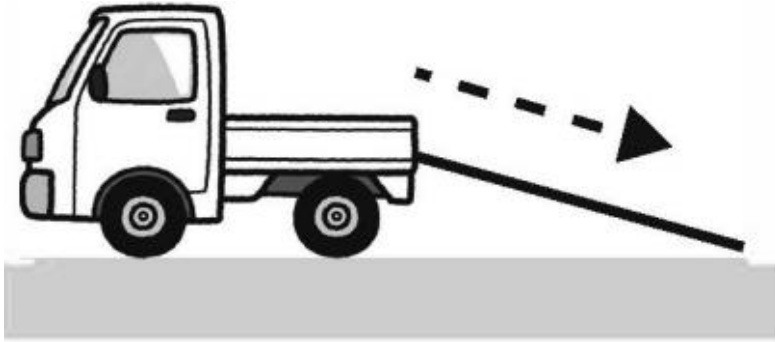
*Notice:*

- 1. Mowing on slopes should be done sideways*
- 2. The engine carburetor is located high*
- 3. Avoid going straight up or down to prevent the engine from burning oil and emitting white smoke or tipping over.*
- 4. Avoid turning around on slopes to prevent the machine from tipping over*



## How to get off the bus

- Step 1 , Turn on the emergency stop switch  
Step 2 , Turn on the power switch  
Step 3 , Turn on the remote control switch  
Step 4 , Operate the remote control left and right to control the joystick to get off the vehicle



Step 1 , Turn on the emergency stop switch



Step 2 , Turn on the power switch



Step 3 , Turn on the remote control switch



Step 4 , Operate the remote control left and right to control the joystick to get off the vehicle





## How to deal with the problem that the engine is not easy to start

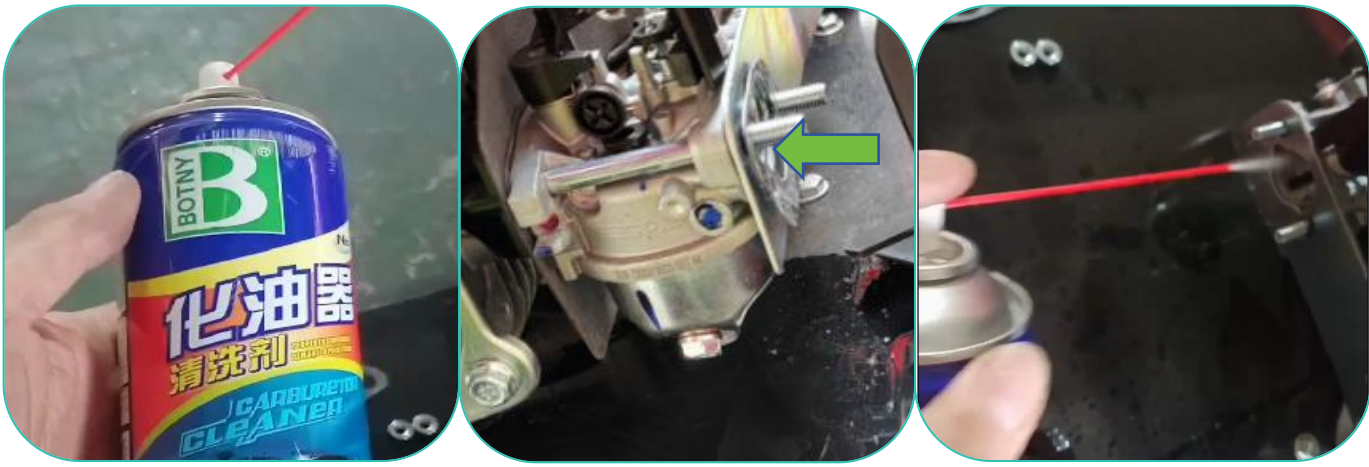
### Consider reasons

1. The weather is cold and the temperature is low
2. Low starting battery
3. There are impurities in the engine carburetor
4. Engine spark plug does not spark when gasoline enters it

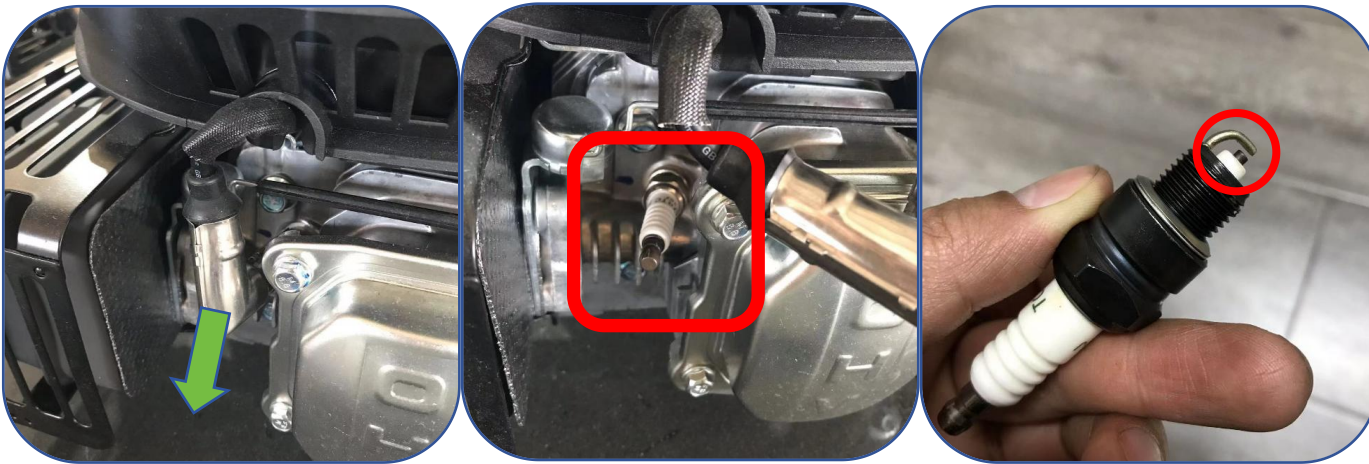
### Solution

1. When the temperature is low, try starting multiple times
2. Try charging the battery or pulling the rope to start it
3. Try cleaning with carburetor cleaner
4. Wipe clean spark plug

When there are impurities in the engine carburetor, try cleaning it with carburetor cleaner



When the engine spark plug enters gasoline and does not spark, wipe the spark plug clean.



## How to deal with white smoke coming out of the engine

### Consider reasons

1. Filling too much oil
2. When mowing on a slope, if the inclination angle is too large, the engine oil will pour into the combustion chamber and burn the engine oil. After the engine oil is burned, the white smoke will disappear.

### Solution

1. Add engine oil according to the oil dipstick, located between L--H
2. When mowing on a slope, refer to "How to mow on a slope?"



## How to handle a rollover accident

- Step 1 , Press the engine stop button on the remote control
- Step 2 , Turn off emergency stop switch
- Step 3 , Turn off the start key
- Step 4 , Turn off the power switch
- Step 5 , Turn off the remote control switch
- Step 6 , Turn the machine over

Step 1 , Press the engine stop button on the remote control



Step 2 , Turn off emergency stop switch



Step 3 , Turn off the start key



Step 4 , Turn off the power switch



Step 5 , Turn off the remote control switch



### Notice:

- \*If the machine overturns, do not approach the machine blindly, safety must be ensured.
- \*Do not touch the cutting blade and blade rotation range.
- \*Do not touch the engine.
- \*Do not put any part of your body into the machine.
- \*If the machine overturns, oil leakage from the engine may occur. After the machine is turned over, please clean the gasoline and oil on the surface of the machine and in the air filter. When you start the engine again, white smoke may appear. This is because the oil is poured into the combustion chamber and the white smoke will disappear after the oil is burned.