



GREATER SCIOTO VALLEY EMMAUS

THE OFFICIAL NEWSLETTER

FROM THE CHAIR

BY JOE MCQUINIFF

Hello Greater Scioto Valley Emmaus family,

April is always a special time of year. We see the signs of spring all around us, and it reminds us that God is always at work bringing new life and new hope. As we continue through the Lenten season and move toward Easter, it is a good time to slow down and think about where God is leading us and how we can grow closer to Him. Lent gives us the opportunity to reflect, pray, and maybe let go of things that get in the way of our relationship with Christ. It doesn't have to be complicated. Sometimes it is just spending a little more time in prayer, opening our hearts, or reaching out to someone who needs encouragement. Small steps can make a big difference in our walk. Our Emmaus community is built on love, support, and friendship, and I am always thankful for each of you. One of the best ways we can share that love is by being involved and helping others experience Emmaus. Our upcoming Women's Walk is April 23-26, and the Men's Walk is April 30-May 3. Please be in prayer for the pilgrims and the teams, and if you feel called, consider how you might help serve. These weekends truly change lives, and it is a blessing to be part of what God is doing. Let's continue to lift each other up in prayer, encourage one another, and stay connected as a community. You never know when a kind word, a prayer, or simply showing up might mean the world to someone. Thank you for all you do for this community. I am grateful to walk this journey with you.

De Colores!

INSPIRING READS IN THIS ISSUE:

- FROM THE BOARD - 2
- FROM THE CSD - 4
- GSVE BOARD - 5
- UPCOMING EVENTS - 6
- JUST FOR LAUGHS - 7

BE ON THE LOOKOUT FOR A TEXT FROM OUR NEW MESSAGING PROGRAM. YOU WILL SEE A TEXT FROM (833) 485-5581.

FROM THE BOARD...

BY LANA MCGRATH



As was shared at the March Gathering, I just wanted to take this opportunity to provide an explanation and update on the sub-committee created by the board in August. The Upper Room, which is owned by the United Methodist Church, has new leadership directly over Emmaus Ministries (this includes Emmaus, Chrysalis, and other ministries). The UMC has experienced the disaffiliation of many churches due to its progressive practices and ideologies. The GSVE community has struggled with participation and securing clergy due largely because of the affiliation with the UMC.

The specific reasons vary, and while we continue to pray for those who serve and worship with the UMC, many of whom are our friends and family, the Board recognizes that decisions need to be made, sooner rather than later. With some research of the new Upper Room leadership, there's great concern regarding the direction the ministry will likely take. There are already changes starting in the covenant which are indicative of what is more than likely coming soon.

In August, the board discussed these issues and opted to create a subcommittee to begin searching for a similar ministry to which GSVE might be able to connect. After researching, reaching out to similar ministries with no response, and much prayer, it became clear that the Lord is leading us in a different direction. Initially the thought was we simply change the wording or script, so to speak, enough so that we could just re-name and go on "business as usual". But we quickly realized we are being called to do more than that.

Feedback from team and pilgrims alike, particularly from the most recent walks, has provided for a beautiful vision of what this ministry can become...what the Lord is calling us to. This is not a re-write. This is the beginning of something **new**. The sub-committee has become a committee to create a new ministry. What this means for GSVE is that, per the by-laws, the board will decide when to have a community vote regarding the dissolution of Greater Scioto Valley Emmaus. An attempt to reach all community members will take place in various forms of communication and time and resources for questions and answers.

The structure of the new ministry, called ABIDE, will be in place and ready to move forward. We can all attest to the power of the Emmaus ministry and the ways in which our lives have been impacted by it. It is truly in our serving that we grow closer to Christ and closer to each other. It is holding fast to scripture as the holy, true, Spirit-breathed Word of God, and accountability with other believers, that we can trust in what the Lord is calling us to do. It is with all this in mind that the Board believes we need to step out in faith.

The ABIDE sub-committee, with much prayer and collaboration, has created a "Who We Are" statement, a Mission Statement, Statement of Beliefs, and a corporate prayer. Work on the by-laws and board structure should be complete in mid-May. The scriptural basis for the ministry will be John 15. As we move forward, we continue to seek the Lord's will in
(Continued)

FROM THE BOARD...

BY LANA MCGRATH



(Continued)

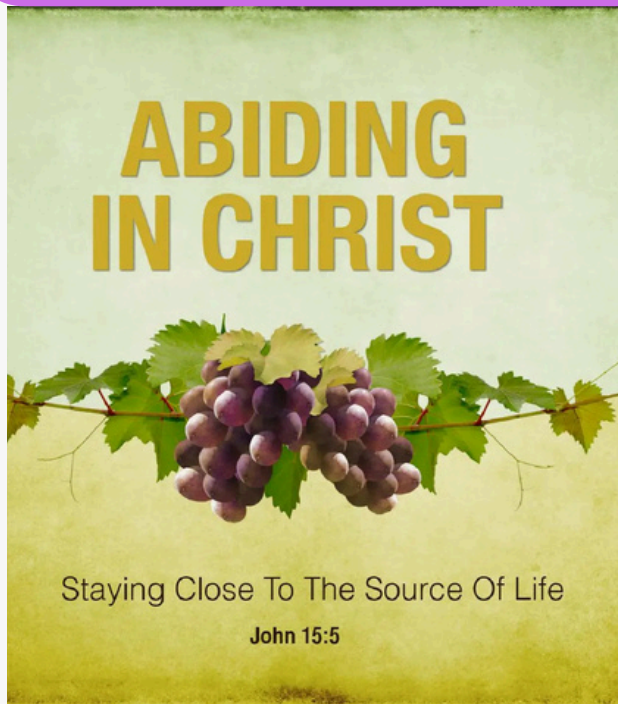
this ministry, that we stay in step with Him...not lagging behind nor moving too quickly, being obedient to His plan for this ministry and again, holding true to scripture. If you have questions, ideas you'd like to share, please connect with one of the subcommittee members:

Lana McGrath	Gregg Montella
Jerry Kunz	Courtney Hines
Tom & Candy Dishong	Zakk Hines
Jamie Darling	Josh Turner
Amy & Aaron Grand	Joe McQuiniff

We ask that you pray fervently and intentionally for the Lord's will to be done in the Greater Scioto Valley Emmaus community, for the members of the board and sub-committee, for discernment and obedience to ways the Lord is calling us to serve the people in southern Ohio.

In His love & service,
Lana McGrath
Sub-committee Chair

BE ON THE LOOKOUT FOR A TEXT FROM OUR NEW MESSAGING PROGRAM. YOU WILL SEE A TEXT FROM (833) 485-5581.



Remember our Upcoming events:

Women's Walk #65 is scheduled for April 23-26
Jenny Bennedetti - Lay Director

Men's Walk #48 is scheduled for April 30-May 3
Aaron Grand - Lay Director

Sign up your Pilgrims, find out information for kitchen help, setup, cleanup, Prayer Vigil and more at gsve.org.

Our next gathering is March 19 at First Wesleyan Church
7:30 pm-8:30 pm with GSVE Board meeting to follow

I thank you in advance for every prayer and everything you do to contribute to this ministry.

FROM THE COMMUNITY SPIRITUAL DIRECTOR

BY JAMIE DARLING

Rev. Jamie Darling, M.Ed., M.Div.
GSVE Community Spiritual Director

From Isaiah 53:12

“Therefore, I will allot Him a portion with the great, And He will divide the booty with the strong; Because He poured out Himself to death and was numbered with the transgressors; Yet He Himself bore the sin of many and interceded for the transgressors.”

As we enter this Holy Week, you may be filled with many emotions the same as our Hebrew ancestors. Insecurity, healing needs, stress over political unrest, estranged families and much more. Palm Sunday opens our week with expectation of the kind of King, and Savior we believe we need. As the week progresses, the expectations start to unravel as the hopes and dreams start to fade. Then we realize on Friday that our King, has died. All of what we thought would be, is gone. We are left confused, sad, hopeless, in grief, and not knowing what the future holds.

Saturday, we begin to try and pick up pieces and figure out how we will manage and go on in our own strength, what little we can muster. Then Sunday comes. The tomb is empty. We start to recall all of what the Messiah has told us when we were walking closely with Him. We start to see hope again, grief turns to expectation, and what was unraveling seems to be coming back together again. We don't know how, we don't know when, but we know our King is alive! And he lives, and reigns and with Him, all things are possible!

I pray your Holy Week, recalls your need for a Savior, recreates your desperation for Him in your life and you begin to walk in the resurrected life and hope Jesus brings to all, who put their faith and trust in Him! Have a blessed Easter Season!

Pastor Jamie Darling

Volunteer to help at a Gathering

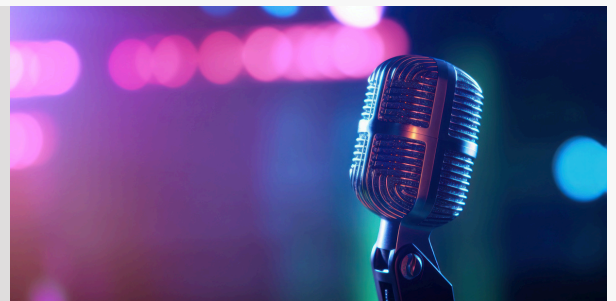
Lead Worship

email: Music@gsve.org

or

Share your 4th Day Story

email: Info@gsve.org



BE ON THE LOOKOUT FOR A TEXT FROM OUR NEW MESSAGING PROGRAM. YOU WILL SEE A TEXT FROM (833) 485-5581.

2026 GSVE BOARD

Executive Committee

Community Lay Director - Joe McQuiniffcommunityld@gsve.org
Vice Chair - Amy Grandvicechair@gsve.org
Secretary - Courtney Hinessecretary@gsve.org
Treasurer - Michele Routtreasurer@gsve.org

Clergy

Community Spiritual Director - Jamie Darling communitysd@gsve.org
Clergy - Randy Bratka
Clergy - Tom Dishong
Clergy - Kirk Mootispaw

Registrar - Rusty Staten.....registrar@gsve.org
Purchasing - Aaron Grandpurchasing@gsve.org
Team Selection - Julie Mounts.....teamselection@gsve.org
Music - Michele Routmusic@gsve.org
Agape - Lana McGrathagape@gsve.org
Housekeeping/social - Bill Jones/Zakk Hines.....housekeeping@gsve.org
Kitchen - Amy Grandkitchen@gsve.org
Sponsorship - Jerry Kunzsponsorship@gsve.org
Communications/Outreach - Danny Sturgilloutreach@gsve.org
Leadership -leadership@gsve.org
Community Trainer - Lana McGrathcommunitytrainer@gsve.org
Good Shepherd - David Coatesgoodshepherd@gsve.org

Chrysalis Reps - Kris Liles, Rochelle Barney.....chrysalis@gsve.org

CHECK OUT OUR WEBSITE AT GSVE.ORG

The website has been recently updated and reorganized. Events and walk information are now on the home page, right where you want it.

Check it out and stay in touch and join us as we follow Christ.

BE ON THE LOOKOUT FOR A TEXT FROM OUR NEW MESSAGING PROGRAM. YOU WILL SEE A TEXT FROM (833) 485-5581.

UPCOMING EVENTS



2026 SPRING WALKS AT KOINONIA

Women's Walk #65

April. 23rd-26th, 2026

Men's Walk #48

April 30th-May 3rd, 2026

Registration is open **NOW**

GSVE.ORG/Events

BE ON THE LOOKOUT FOR A TEXT FROM OUR NEW MESSAGING PROGRAM. YOU WILL SEE A TEXT FROM (833) 485-5581.



WHO ARE YOU SPONSORING? TIME IS NOW TO BE PRAYING AND TALKING UP YOUR EMMAUS EXPERIENCE WITH THOSE THAT GOD HAS PUT ON YOUR MIND AND IN YOUR PATH. BOTH PILGRIM AND SPONSOR FORMS ARE ONLINE AT GSVE.ORG. WHAT'S KEEPING YOU? GET IT DONE. IT'S NOT TOO EARLY TO REGISTER FOR FUTURE WALKS.

Volunteer opportunities for each walk will be available online. Check out GSVE.org

BE ON THE LOOKOUT FOR A TEXT FROM OUR NEW MESSAGING PROGRAM. YOU WILL SEE A TEXT FROM (833) 485-5581.

JUST FOR LAUGHS... TECH EDITION



(See Genesis 2:18-25)

03-28-2

JUST LET ME KNOW WHO WAS HERE FIRST AND I'LL GET THE PAPERWORK STARTED

REVERENDFUN.COM COPYRIGHT GCI, INC



LEPERS ... I HEAL LEPERS



FOLLOW US

<https://facebook.com/GreaterSciotoValleyEmmaus>

VISIT GSVE.ORG to sign up TODAY!