

GREATER SCIOTO VALLEY EMMAUS

THE OFFICIAL NEWSLETTER

FROM THE CHAIR

BY GARY JORDAN

Life is moving rapidly. It's July already! Been an interesting June, 90 degree plus days, seventies at night. Busy mowing grass!

I would like to ask all of us to be careful and watch out for others during this upcoming Holiday. A lot of people will be traveling, visiting family, picnics, riding bikes, young and old. Slow down, be patient with others, we don't know what others may be going through. A good time to practice our christian values. Jesus said they will know you by your love for one another!

Also I would like to encourage you and your families to get back in church, if you don't have a church find one. We need to remember the kindness and love God has Graced us with, in like minded fellowship. Jesus died for us, forgave our sins, reconciled us back to the Father! We need to glorify Him with praise and worship individually and corporately! Amen

I would like to thank all of you for the support we had moving to a new venue. Your prayers and help with the Men's and Women's walk, the cooking, cleaning, and moving things sometimes 2-3 times. Everything according to the teams went very well. Some things were changed, and will be changed again to keep things accommodating to all that attend the weekend events. It was very obvious that the prayers and all those helping behind the scenes made things easier for the teams. The Teams themselves were prayed and ready to serve the new pilgrims.

INSPIRING READS IN THIS ISSUE:

FROM THE BOARD - 2

FROM THE CSD - 3

GSVE BOARD - 4

UPCOMING EVENTS - 5

JUST FOR LAUGHS - 6

We have walks scheduled for this fall, Women's Walk #62 October 3-6 and Men's Walk #46 October 24-27. Mark your calendars. They are at Koinonia Farms Camp. Sign up Pilgrims, at gsve.org. Information for kitchen help, setup, cleanup, Prayer Vigil also at gsve.org.

Next Council Meeting is July 21st 2:30-4pm at Harvest Center Church, everyone is welcome.

Elections coming up this fall, if you are interested or know someone interested please get names in to us, at gsve.org as soon as possible so we can get them on the Ballot this fall.

Romans 5:15 But the free gift is not like the trespass. For if many died through one man's trespass, much more have the grace of God and the free gift by the grace of that one man Jesus Christ abounded for many.

We thank you in advance for every prayer, everything you contribute and things you do, everything is appreciated. Looking forward to seeing you. I hope you had a safe and blessed 4th of July, Gary Jordan

FROM THE BOARD...

BY JOE MCQUINIFF



I currently serve on the Team Selection and Nominations committee on the board. This is something that is out of my comfort zone. Talking on the phone is a big part of this job as a lot of you probably know since I probably called or left a message on your phone about the team selection for the last 2 walks. They say God will not ask more than you can do and I'm now sure that is true! I talked to a lot of good people and heard many stories about what Emmaus meant to so many people. Some conversations lasted for a long time and I felt God's Love being poured out by so many people. I feel like I was truly blessed many nights when my wife would say to me "do you know what time it is?"

I took my walk #23 back in 2005 and I have been on 3 Emmaus Teams and one Chrysalis team. I'm sure I got more out of being on a team than my original walk. The closeness you get to all the team members is something special you will remember for the rest of your life. I want to encourage each of you to pray about where the Lord is leading you in the Ministry and listen for an answer as to where He may be leading you. Along with the good things about calling for team selection, is that there was also some bad. I would talk to people who took their walk many years ago and never became involved with Emmaus after their walk. That is so sad. No one had reached out to them and they never came back to serve or become involved at all. To all those who haven't been asked to be on a team and would like to be considered, please let me know. And if anyone is interested in being on the Board also let me know.

I would like to thank all who were involved to make these two walks at the new camp a success. We have a very good Emmaus Community and I am glad to be a part of it.

Joe McQuiniff

FROM THE COMMUNITY SPIRITUAL DIRECTOR

BY DAVE BURRISS

A Reflection for Independence Day

In him and through faith in him we may approach God with freedom and confidence. Ephesians 3:12 July means Independence Day in the United States. On this day, commonly called The Fourth of July, we Americans celebrate the signing of the Declaration of Independence. On July 4, 1776, the Continental Congress approved the final wording of the Declaration, thus affirming the independence of the United States from Great Britain.

For over two hundred years, citizens of the U.S. have celebrated our independence on The Fourth of July. We fly the flag; put up red, white, and blue decorations; march in parades; and enjoy picnics. Throughout all of our celebrations, we are reminded of the gift of our freedom as a nation. Indeed, we are blessed in the United States with exceptional liberty, for which we ought to thank the Lord. Other countries around the world have similar national celebrations of freedom. July 1 is Canada Day. January 26 is Australia Day. September 16 is Grito de Dolores in Mexico.

Ephesians 3:12 celebrates another kind of freedom, a freedom that is even more amazing than the freedoms guaranteed by the Declaration of Independence and the U.S. Constitution. This verse reads: "In [Christ] and through faith in him we may approach God with freedom and confidence." The Greek word translated here as "freedom" refers specifically to "freedom of speech" (parresia, with a literal meaning of "all speech"). The word rendered as "approach" suggests one's authorization to draw near to a king. The Greek original of Ephesians 3:12 says that we can be confident in our "freedom of speech" and "authorization to approach" God.

Let me put this plainly. In Christ, you have the freedom to draw near to God, to tell God anything you wish, without holding back. You can express to God not only your joys but also your sorrows, not only your assurance but also your doubt, not only your pleasure but also your anger. This is an amazing freedom. Of course it's a freedom that we Christians can easily take for granted, even as citizens of various countries can hold their political freedom too lightly. When we're used to praying to God at any time, in any place, with any words, we can forget the stunning nature of our access to God. Think about it. The God who created the universe, the King of kings and Lord of lords, the God of all wisdom and justice, this God invites you to speak your mind, to share with him your thoughts, your feelings, your fears, and your dreams. The more you reflect on this invitation, the more you'll come to realize just how amazing it is. So, if, like me, you're an American, by all means take time today to thank God for the freedom we have in this country. But, whether you live in the U.S. or not, I encourage you to step back and consider the freedom Christ has given you to approach God with deep confidence. Let's thank God together for this amazing freedom he has given us.

The Question we need to ask ourselves is: Do you ever marvel at the freedom God has given you to approach him? Do you take advantage of this freedom? Do you take it for granted?

Blessings Pastor Dave

Volunteer to help at a Gathering

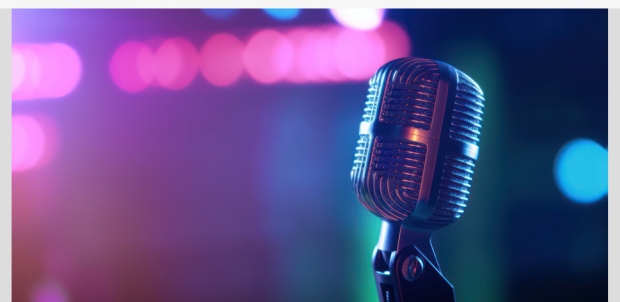
Lead Worship

email: Music@gsve.org

or

Share your 4th Day Story

email: Info@gsve.org



2023 GSVE BOARD

Executive Committee

Community Lay Director - Gary Jordancommunityld@gsve.org
Vice Chair - John Manascovicechair@gsve.org
Secretary - Bill Leesecretary@gsve.org
Treasurer - Michele Routtreasurer@gsve.org

Clergy

Community Spiritual Director - Dave Burris communitysd@gsve.org
Clergy - Jamie Darling
Clergy - TBD

Registrar - Aaron Grand, Linda Jonesregistrar@gsve.org
Purchasing - Aaron Grandpurchasing@gsve.org
Team Selection - Joe McQuiniffteamselection@gsve.org
Music - Michele Rout, John Manascomusic@gsve.org
Agape - Cindy Moodyagape@gsve.org
Housekeeping - Jeff Brammerhousekeeping@gsve.org
Kitchen - Amy Brownkitchen@gsve.org
Sponsorship - Linda Jonessponsorship@gsve.org
Social/Outreach - Bill Jones, Danny Sturgis.....outreach@gsve.org
Leadership - Lana McGrathleadership@gsve.org
Community Trainer - Mike Matheneycommunitytrainer@gsve.org
Good Shepherd - Jody Wilsongoodshepherd@gsve.org

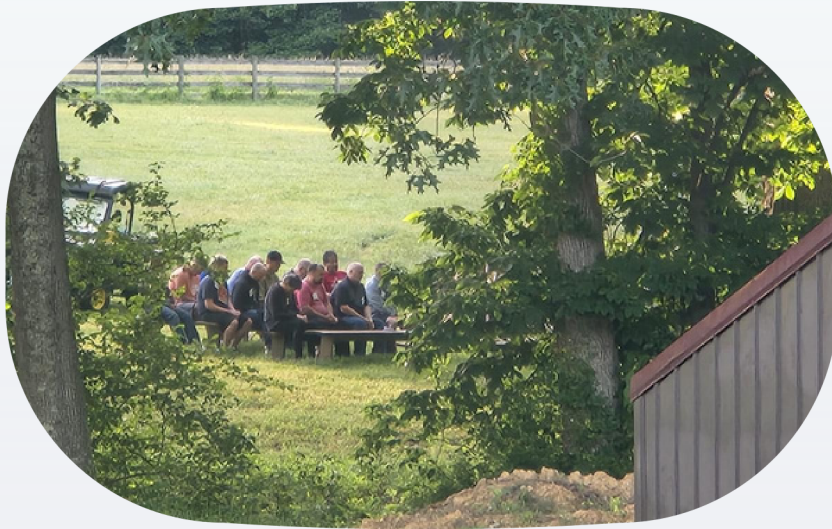
Chrysalis Reps - Kris Liles, Rochelle Barney.....chrysalis@gsve.org

CHECK OUT OUR WEBSITE AT GSVE.ORG

The website has been recently updated and reorganized. Events and walk information are now on the home page, right where you want it.

Check it out and stay in touch and join us as we follow Christ.

UPCOMING EVENTS



2024 FALL WALKS AT KOINONIA

Women's Walk #62

Oct. 3th-6th, 2024

Men's Walk #46

Oct 24th-27th, 2024

Registration is open **NOW**

GSVE.ORG/Events

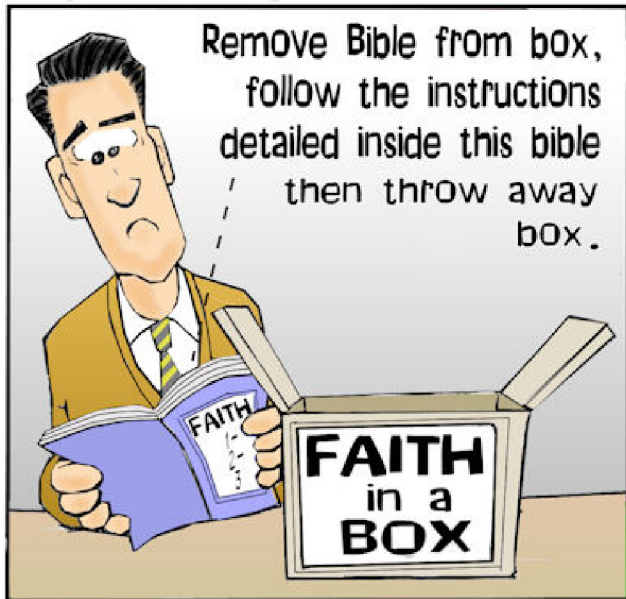


WHO ARE YOU SPONSORING? TIME IS NOW TO BE PRAYING AND TALKING UP YOUR EMMAUS EXPERIENCE WITH THOSE THAT GOD HAS PUT ON YOUR MIND AND IN YOUR PATH. BOTH PILGRIM AND SPONSOR FORMS ARE ONLINE AT [GSVE.ORG](https://www.gsve.org). WHAT'S KEEPING YOU? GET IT DONE. IT'S NOT TOO EARLY TO REGISTER FOR FUTURE WALKS.

Volunteer opportunities for each walk will be available online. Check out [GSVE.org](https://www.gsve.org)

JUST FOR LAUGHS... TECH EDITION

The Back Pew - Jeff Larson



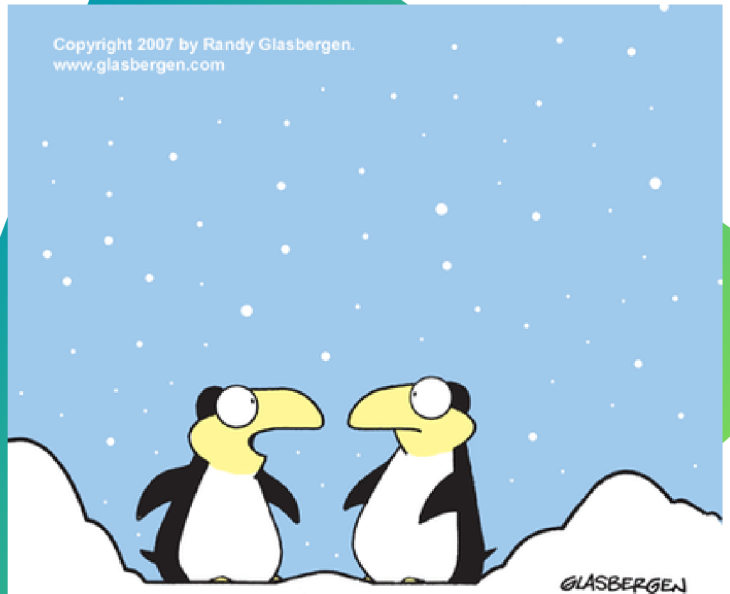
Karl was sooo excited to receive his mail order FAITH but soon realized.. this was not rocket science.

© Randy Glasbergen / glasbergen.com



“Acme Excavating. Faith speaking.”

Copyright 2007 by Randy Glasbergen.
www.glasbergen.com



“Faith means believing in things
you’ve never seen...like your feet!”



FOLLOW US

<https://facebook.com/GreaterSciotoValleyEmmaus>

VISIT [GSVE.ORG](https://www.gsve.org) to sign up TODAY!

JULY 2024

QUESTIONS ???

IS GSVE LEAVING CHILLICOTHE?

No. GSVE is based in and will continue to be focused on the ministry of the Chillicothe and surrounding communities. Holding our Walk Weekends at a nearby facility with cabins and conference accommodations is what we are giving the GSVE community a new experience. Monthly Gatherings will be held at various churches in the Chillicothe area. Let us know if you would like to host a Gathering at your Church.

WHERE ARE THE GSVE WALKS BEING HOSTED?

Koinonia Farms is located east of Laurelville, OH. This beautiful location in the Hocking Hill area is the ministry built by a local Christian family with strong ties to Chillicothe. It was built during the Covid pandemic shutdown and they continue to build new accommodations and features. They want to offer the use of their facilities as a ministry gift to GSVE. They are excited to offer a partnership with us to share the gospel and promote Christian discipleship.

WHY CHANGE VENUES FOR THE WALKS?

There are a number of reasons, the most pressing being that our numbers were declining, both in service and pilgrim participation. We've been given an opportunity to revitalize and grow by pivoting the experience to a camp environment which allows for communion with God's beautiful creation, without distractions from the outside world. Since our announcing a change in venue, we have had an overwhelming positive response to the new experience we will be able to offer.

WHY SO FAR AWAY? I'M CONCERNED ABOUT COMMUNITY SERVING

This venue will come with the need for a commitment to intentional service. There are accommodations for "live-in" logistics and kitchen team. The camp has ample space to house additional servants. We would encourage car-pooling when coming to serve for just a few hours. Both the Love Community and Southern Ohio Emmaus currently hold their walks at camps, and have a wonderful experience.

WHY CHANGE NOW?

The future of GSVE has been prayerfully poured over by many people for a long time, even before Covid brought us to a screeching halt. While some Emmaus and Chrysalis communities are thriving, many, like GSVE, are struggling to recover from such a shutdown. The need for a ministry like ours is evident in those communities that are doing well. In Matthew 9:37-38 Jesus tells the disciples, "The harvest is plentiful, but the laborers are few; therefore pray earnestly to the Lord of the harvest to send out laborers into His harvest." The purpose of Emmaus is to support the spiritual formation of Christians seeking to know and experience God more fully. As laborers we must continue to pray and go into the "harvest" of believers so that they may continue to grow in their faith and walk with the Lord.

WHAT ABOUT GATHERINGS?

Gatherings will be held in churches in the Chillicothe area so that we can reach others with the ministries of Emmaus and Chrysalis. The Board is evaluating elements of Gatherings, such as day of the week and time of day and would love to have input from the community on this topic. Our Gatherings in the park were well attended and we definitely have multiple outdoor resources for better weather. GSVE is an ecumenical organization and we need to show our support in strengthening disciples within all area churches, not just inviting them on the Walks.

We encourage you to send additional questions by email to communityld@gsve.org.