



GREATER SCIOTO VALLEY EMMAUS

THE OFFICIAL NEWSLETTER

FROM THE CHAIR

BY GARY JORDAN

Hello all, summer is winding down, school is back in session, summer fun and vacations are in the books. We're looking forward to seeing you all at upcoming events!

We need your prayers and those of you who are able to help with upcoming walks. Without you we couldn't have these events, so thank you for all your help.

The teams are meeting, previewing talks, and working on the details! It's always exciting to watch people gathering together to further the Gospel, to encourage each other and the pilgrims in His Kingdom work. Remember God called us to love one another just as He has loved us!

Please prayerfully consider where and when you could serve on either of these weekend events. Sign up as soon as possible, if you can't serve a full shift, that's ok. The kitchen or housekeeping team leaders will be happy for your assistance for the any time you can serve, all help is greatly appreciated!,

INSPIRING READS IN THIS ISSUE:

FROM THE BOARD - 2

FROM THE CSD - 3

GSVE BOARD - 4

UPCOMING EVENTS - 5

JUST FOR LAUGHS - 6

Remember our Upcoming events:

Women's Walk #62 is scheduled for October 3-6.

Men's Walk #46 is scheduled for October 24-27

Sign up your Pilgrims, find out information for kitchen help, setup, cleanup, Prayer Vigil and more at gsve.org.

Next Board Meeting is Sept 22th 3:00-4:30pm at Koinonia Farms Camp 15605 Long Run Rd Laurelville, Ohio 43135. Everyone is welcome to attend.

Our next gathering is September 15th in Poland Park from 2:30 PM - 4:00 PM.

DON'T FORGET Elections coming up this fall, if you are interested or know someone Interested in serving on the Emmaus Board, please get names in to us at gsve.org as soon as possible.

I thank you in advance for every prayer and everything you do to contribute to this ministry.

FROM THE BOARD...

BY JERRY KUNZ



Housekeeping/set up crew/tear down crew.

Greetings! I am writing this month to explain some of the duties and responsibilities of the housekeeping and set up crew at Koinonia Family Camps. I participate on this subcommittee of the Greater Scioto Valley Emmaus Board of Directors. This committee serves anonymously in the background making sure that the camp is set up and cared for during the Walk weekends. There are a lot of things to set up BEFORE a walk begins. For example, we need to set up the entire conference area, from tables and chairs, to divider walls and snack tables. Working with the Kitchen crew, we then need to set up the dining area with tables and chairs to their specifications for all of the mealtime festivities. We are also responsible for setting up the cabins for the team and pilgrims to sleep. This includes a quick cleaning of any dirt, insects, or spiders! After all, it is a camp, you know! As for the outdoor chapel, we need to set up benches and tables for the activities held at this location. Back in the main building, we work with the logistics team to move pews and the podium to set up the Indoor Chapel. Then we need to move tables and set up chairs for the Send-off activities held on Thursday night, followed by a quick freshening up of the bathrooms before the pilgrims arrive. There is a lot of work to do starting early Thursday morning. But it is extremely satisfying knowing that everything will be perfect for the pilgrims!

During the weekend, Housekeeping then does cleaning of the bathrooms and showers, making a clean and sanitary place for the team and pilgrims. These duties are normally after breakfast. If done right, we then just need a light touch up of any messes after lunch and a good cleaning of the toilets after dinner. Most help is needed in the mornings as there are 16 showers and 8 toilets/urinals. Remember, as exemplified in Nehemiah Chapter 3: Many hands make light work!

And Finally, On Sunday, while the pilgrims are in the conference room for the day, we assist in moving all of their belongings from the cabins to the main building (such a nice gift of agape) where their sponsors will collect them later in the day. The cabins are then cleaned and returned to their original configuration. And then, after closing, we have to put EVERYTHING away and return the camp to the way we found it! Only CLEANER!! My motto is to leave the place in better shape than we found it! Even picking up any stray trash. When I helped to clean up from the women's walk in June, I even picked up a piece of weed wacker string left by the owners of the camp from the weeks before. It was just a little piece of nothing really, BUT to me, I left the camp nicer than I found it!!!

If you would be willing to serve in this capacity, please contact Jason Moody, Danny Sturgill, myself or any of the board members and we will get you signed up! Or, go to GSVE.ORG and click on the VOLUNTEER banner! I look forward to serving with you in October!!

Jerry Kunz
GSVE Mens Walk #27, Table of Peter

FROM THE COMMUNITY SPIRITUAL DIRECTOR

BY DAVE BURRISS

The Parable of the Good Samaritan

Jesus is known to be a teacher that allows the questioner to answer their own questions. This time around the lawyer is able to produce a fairly decent answer. However, it was clear that the lawyer had more in mind than just seeing what it takes to get to heaven. He wants to justify his disdain for certain people.

It is quite likely that the lawyer wants to exclude the Samaritans from “love thy neighbor”, since Jesus was passing through Samaria.

But Jesus could tell see what the man was up to. He delivered an answer with a stinging parable. It is hard to know how the lawyer took the answer from Jesus, but it seems clear that the conversation ended at that point, assuming that the lawyer had no further questions.

Jesus uses this extreme example of the good Samaritan to illustrate how we ought to behave as Christians, towards our fellow peers, neighbors colleagues, family and everyone that crosses our path. To show love and kindness is a representation of Jesus Christ living in your heart. To selflessly put others needs before yours, is showing exactly what Jesus Christ does for us.

Jesus set the example of what it means to truly show love to one another and sacrificially give up yourself and your needs for the sake of another person. This Samaritan not only risked his own safety by stopping to help this man but he also went out of his way to make sure he was well taken care of.

This is a true picture of unconditional love. The injured man had no means of every being able to repay him for his kindness. The whole point of this act was that it was done out of a heart of compassion, love and mercy. It was acted with no means of expecting anything back. This is what the heart of the Christian ought to look like and what we should strive to live to do.

Blessings Pastor Dave

Volunteer to help at a Gathering

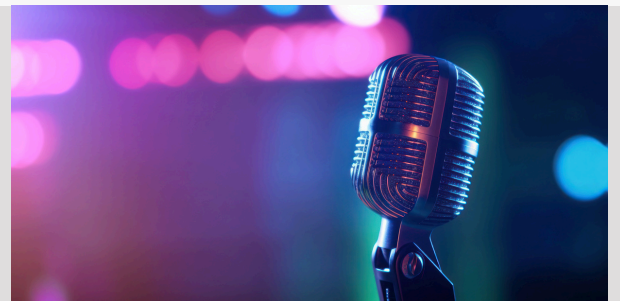
Lead Worship

email: Music@gsve.org

or

Share your 4th Day Story

email: Info@gsve.org



2024 GSVE BOARD

Executive Committee

Community Lay Director - Gary Jordancommunityld@gsve.org
Vice Chair - John Manascovicechair@gsve.org
Secretary - Bill Leesecretary@gsve.org
Treasurer - Michele Routtreasurer@gsve.org

Clergy

Community Spiritual Director - Dave Burris communitysd@gsve.org
Clergy - Jamie Darling
Clergy - TBD

Registrar - Aaron Grand, Linda Jonesregistrar@gsve.org
Purchasing - Aaron Grandpurchasing@gsve.org
Team Selection - Joe McQuiniffteamselection@gsve.org
Music - Michele Rout, John Manascomusic@gsve.org
Agape - Cindy Moodyagape@gsve.org
Housekeeping - Jason Moodyhousekeeping@gsve.org
Kitchen - Amy Brownkitchen@gsve.org
Sponsorship - Linda Jonessponsorship@gsve.org
Social/Outreach - Bill Jones, Danny Sturgis.....outreach@gsve.org
Leadership - Lana McGrathleadership@gsve.org
Community Trainer - Mike Matheneycommunitytrainer@gsve.org
Good Shepherd - Jody Wilsongoodshepherd@gsve.org

Chrysalis Reps - Kris Liles, Rochelle Barney.....chrysalis@gsve.org

CHECK OUT OUR WEBSITE AT GSVE.ORG

The website has been recently updated and reorganized. Events and walk information are now on the home page, right where you want it.
Check it out and stay in touch and join us as we follow Christ.

UPCOMING EVENTS



2024 FALL WALKS AT KOINONIA

Women's Walk #62

Oct. 3th-6th, 2024

Men's Walk #46

Oct 24th-27th, 2024

Registration is open **NOW**

GSVE GATHERING
POLAND PARK
15 SEPTEMBER 2024
2:30PM-4:00PM



LOCATED ON THE CORNER OF HICKORY AND
WEST FIFTH STREETS, CHILLICOTHE OH.



Greater Scioto Valley
Emmaus

Board Meeting

📅 22 September, 2024
🕒 3:00 PM - 4:30 PM
📍 Koinonia Farms Camp
15605 Long Run Rd
Laurelville, OH 45601

740-883-3885

www.gsve.org



WHO ARE YOU SPONSORING? TIME IS NOW TO BE PRAYING AND TALKING UP YOUR EMMAUS EXPERIENCE WITH THOSE THAT GOD HAS PUT ON YOUR MIND AND IN YOUR PATH. BOTH PILGRIM AND SPONSOR FORMS ARE ONLINE AT GSVE.ORG. WHAT'S KEEPING YOU? GET IT DONE. IT'S NOT TOO EARLY TO REGISTER FOR FUTURE WALKS.

Volunteer opportunities for each walk will be available online. Check out GSVE.org

JUST FOR LAUGHS... TECH EDITION

THEBACKPEW.COM · J. Larson

Did I ever show you my
Jesus? He is Savior of
the World 'doncha'
know.



IF ANYONE BRAGS, THEY SHOULD BRAG ON THE LORD.
1 COR 1:31.. LIKE A GRANDMA BRAGS ON GRANCHILDREN



The CARTOON KRONICLES



"If I send my prayer as a text message,
will I get a faster reply?"



FOLLOW US

<https://facebook.com/GreaterSciotoValleyEmmaus>

VISIT GSVE.ORG to sign up TODAY!

SEPTEMBER 2024

QUESTIONS ???

IS GSVE LEAVING CHILLICOTHE?

No. GSVE is based in and will continue to be focused on the ministry of the Chillicothe and surrounding communities. Holding our Walk Weekends at a nearby facility with cabins and conference accommodations is what we are giving the GSVE community a new experience. Monthly Gatherings will be held at various churches in the Chillicothe area. Let us know if you would like to host a Gathering at your Church.

WHERE ARE THE GSVE WALKS BEING HOSTED?

Koinonia Farms is located east of Laurelville, OH. This beautiful location in the Hocking Hill area is the ministry built by a local Christian family with strong ties to Chillicothe. It was built during the Covid pandemic shutdown and they continue to build new accommodations and features. They want to offer the use of their facilities as a ministry gift to GSVE. They are excited to offer a partnership with us to share the gospel and promote Christian discipleship.

WHY CHANGE VENUES FOR THE WALKS?

There are a number of reasons, the most pressing being that our numbers were declining, both in service and pilgrim participation. We've been given an opportunity to revitalize and grow by pivoting the experience to a camp environment which allows for communion with God's beautiful creation, without distractions from the outside world. Since our announcing a change in venue, we have had an overwhelming positive response to the new experience we will be able to offer.

WHY SO FAR AWAY? I'M CONCERNED ABOUT COMMUNITY SERVING

This venue will come with the need for a commitment to intentional service. There are accommodations for "live-in" logistics and kitchen team. The camp has ample space to house additional servants. We would encourage car-pooling when coming to serve for just a few hours. Both the Love Community and Southern Ohio Emmaus currently hold their walks at camps, and have a wonderful experience.

WHY CHANGE NOW?

The future of GSVE has been prayerfully poured over by many people for a long time, even before Covid brought us to a screeching halt. While some Emmaus and Chrysalis communities are thriving, many, like GSVE, are struggling to recover from such a shutdown. The need for a ministry like ours is evident in those communities that are doing well. In Matthew 9:37-38 Jesus tells the disciples, "The harvest is plentiful, but the laborers are few; therefore pray earnestly to the Lord of the harvest to send out laborers into His harvest." The purpose of Emmaus is to support the spiritual formation of Christians seeking to know and experience God more fully. As laborers we must continue to pray and go into the "harvest" of believers so that they may continue to grow in their faith and walk with the Lord.

WHAT ABOUT GATHERINGS?

Gatherings will be held in churches in the Chillicothe area so that we can reach others with the ministries of Emmaus and Chrysalis. The Board is evaluating elements of Gatherings, such as day of the week and time of day and would love to have input from the community on this topic. Our Gatherings in the park were well attended and we definitely have multiple outdoor resources for better weather. GSVE is an ecumenical organization and we need to show our support in strengthening disciples within all area churches, not just inviting them on the Walks.

We encourage you to send additional questions by email to communityld@gsve.org.