



JUE 2026

Hello

PORT RESIDENTS

Hello Port Residents,

As summer arrives and the Delaware beaches come alive, we're reminded that Port Delmarva is more than a place to camp—it's a community built on neighbors helping neighbors.

Whether you're volunteering at an event, helping care for our grounds, welcoming a new resident, or sharing a friendly wave, your generosity and community spirit make Port Delmarva a wonderful place to call home.

June offers several meaningful occasions to celebrate. We honor Flag Day on June 14, recognize fathers and father figures on Father's Day, June 21, and commemorate Juneteenth on June 19, a day to reflect on freedom, resilience, and community.

As we enjoy another beautiful summer in ThePort, let's continue to support one another, share a smile, and take pride in the welcoming spirit that makes Port Delmarva unique.

To all our volunteers, thank you. Your time, dedication, and kindness help make this community thrive.



PORT DELMARVA, INC.
260 Port DelMarVa
Rehoboth Beach, DE 19971 (302)227-7409
www.portdelmarva.com

MAY 31, 2026
NOTICE

SUBJECT: Nominating Committee for August 1, 2026, Stockholder's Meeting

The following Stockholders were appointed to serve as the Nominating Committee to obtain candidates for the 2026 election to the Board of Directors:

Jeff Hake (chair) 443-677-5712 jdhake@verizon.net
Mary Hough 410-371-7933 frenchhough69@comcast.net
Bill Moore 443-377-6753 bill.pdmv@gmail.com

The Nominating Committee has been charged with presenting a slate of candidates to serve as Director for a two-year term.

The Bi-Laws state the Board of Directors may not exceed 5 Members.

There are 3 open positions.

JENS MALY

STEPHANIE ARTHURS

KEVIN JOHNSON

We encourage all stockholders to seriously consider candidacy for the Board of Directors and invite you to contact a member of the Nominating Committee as soon as possible. Candidates must submit a resume to the Nominating Committee prior to 5:00 PM, June 30, 2026, so that a notice of the election can be mailed to the stockholders by July 1, 2026.

No nominations will be taken from the floor at the stockholders meeting.

Board of Directors
Port DelMarVa, Inc.
Cc: Bulletin Boards – Memorial Hall
Board of Directors Secretary File
Election Processing File

Boaters beware: Baker's Channel markers to be removed

Chris Flood



May 23, 2026

As part of a project repairing and installing channel markers in the Inland Bays, the Delaware Department of Natural Resources and Environmental Control has announced it is removing the floating channel markers from Baker's Channel and will not be replace them.

More than half of the floating markers within the channel were lost following this winter's storms, said Josh Lippert, DNREC Shoreline and Waterway Management Section administrator. Many of the remaining markers were knocked off station and no longer accurately reflect navigable conditions, creating a potential navigation concern for boaters, he said.

Connecting Rehoboth and Indian River bays, Baker's Channel is located along the eastern side of an island called Lynch's Thicket. It's an area of the bay known for sandbars, but the channel has been marked through a partnership with the Center for the Inland Bays since 2011 and was done to help alleviate congestion in Massey's Ditch. The ditch is on the western side of the island and is where Massey's Landing is located at the end of Long Neck Road. However, Baker's Channel was never formally established as a state-maintained navigational channel.

Lippert said a review determined the partnership arrangement with the center is no longer in force, and no active agreement governing ongoing maintenance responsibilities could be identified. Massey's Ditch remains the recognized and actively maintained state navigation route for the area, he said.

While DNREC recognizes the continued increase in boating activity throughout the Inland Bays, Massey's Ditch continues to remain the state's primary maintained navigation channel in this area and remains the priority for ongoing maintenance and dredging resources, said Lippert, comparing Baker's Channel to the state's roadway system.

"Some roads are owned and maintained by the Delaware Department of Transportation, while others are private roads, or maintained by municipalities or homeowner associations," said Lippert. "Similarly, the state maintains priority navigational channels such as Massey's Ditch, while other waterways may exist and be used by boaters, but are not formally maintained by the state."

The larger issue with Baker's Channel is the long-term maintenance associated with floating buoys, said Lippert. Coastal storms and shifting shoals can move markers off station, requiring additional survey work, vessel time, and staffing resources to routinely inspect, reposition, and maintain the aids to navigation, he said.

Baker's Channel was named in honor of Capt. Bill Baker, a member of the Inland Bays Water Use Plan Implementation Committee that worked with the state on marking the channel. He also owned a bait and tackle shop in Lewes.

Additional channel marker maintenance

DNREC announced its plans for Baker's Channel as part of a press release May 19, saying it had recently started a channel-marking project.

This winter's snow and ice storms were particularly impactful to channel markers throughout the Inland Bays, as freeze-thaw cycles and ice movement caused some markers to be knocked off station or lost completely, said Lippert.

Not including the removal of the markers from Baker's Channel, the project involves 44 Inland Bays channel markers – the installation of nine channel markers in Lower Indian River, the installation of seven channel markers in Roy Creek, the replacement of six channel markers in Whites Creek, the replacement of 12 channel markers in Beach Cove and the relocation/installation of 10 channel markers in The Ditch.

DNREC performs channel-marking work annually as part of its ongoing waterway management program, which maintains nearly 200 channel markers statewide, said Lippert. The current effort represents one of the more substantial channel maintenance and relocation initiatives in recent years for the Inland Bays because of the number of waterways requiring attention simultaneously, he said.

The press release said most of the work was expected to be completed by Memorial Day, with some minor items remaining. However, it doesn't appear work is moving as fast as originally expected.

The current timeline remains weather-dependent, and forecast high winds this week are making channel-marking operations more challenging and could impact scheduling, said Lippert.

As for the timing of the project – the week before the beginning of the summer season – Lippert said channel-marking work is typically conducted during the spring preseason maintenance window. However, this year's work required coordination of staffing, equipment, surveys, weather conditions and prioritization across multiple waterways simultaneously.

"Staffing challenges and the significant winter storm, snow and ice damage sustained by numerous channel markers this year increased the overall amount of channel-marking work required throughout the Inland Bays system," said Lippert.

For up-to-date channel conditions, Lippert said DNREC issues Notices to Mariners regarding navigation concerns and works closely with DNREC Natural Resources Police to communicate changing channel conditions and promote boating safety throughout the Inland Bays



A speed camera is active on Southbound Delaware Route 1 (Coastal Highway) at Red Mill Pond, just north of the Minos Conaway Road construction zone near Lewes. The system enforces a 50 mph speed limit, issuing citations to vehicles traveling 11 mph or more over the limit (61 mph+). [1, 2, 3]

Status: Active (since Nov. 11, 2025).

Location: SB Route 1 at Minos Conaway Rd/Red Mill Pond, near the Nassau Bridge.

Trigger Threshold: 61 mph in the 50 mph zone (11+ mph over).

Penalties: Civil penalties (\$20+ base fine + fees), no points added to license.

Volume: Over 24,000 tickets were issued in the first month. [1, 2, 3, 4]

The camera is part of the Delaware Department of Transportation (DelDOT) construction efforts to improve safety in the area, which is experiencing significant traffic congestion due to intersection redesigns

Here we go, Ladies & Gents, our First (to be annual)

Pars, Pours & Pandemonium

July 3rd at 5:00 pm

What we need:

- Groups of four to set up a putt-putt hole, provide a cocktail and an appetizer

Prizes awarded for:

*Best Hole *Best Appetizer *Best Drink *Best Golfer

Those who sponsor a hole will also get to play the course or you can simply golf without sponsoring a hole.

\$5 per person (payable 7/3)

MUST BE 21 TO TAKE PART

Registration begins at 4:30 near the volleyball court.



****Participate at your own risk, this is not a Port DelMarva Inc. sponsored event.****

<https://www.signupgenius.com/go/60B0D44AAAE2DA13-64291271-par>

EVENTS

Saturday, June 06 – Sunday, June 07

Mid Atlantic Sea Glass & Coastal Arts Festival

9am-4pm, Lewes Historical Society, 110 Shipcarpenter Street, Lewes. Join the Lewes ...

Sunday, June 07

Rocking the Docks show to benefit Fourth Street Preserve

4pm, Lewes Ferry Terminal. Rocking The Docks will officially kick off ...

Sunday, June 07 – Friday, June 12

2026 Coastal Delaware Restaurant Week to Support the Red, White, & Blue on the Culinary Coast™!

Friday, June 12

Rehoboth Beach Bandstand Summer Concert Series Opening Night

8pm, Rehoboth Beach Bandstand. Super Trans AM, a 70's rock tribute ...

Saturday, June 20

Lewes Garden Tour and Market

10 a.m. to 4 p.m. <https://leweschamber.com> ...

Saturday, June 27

First State Fest

10am-3pm, Hudson Fields, 29977 Eagle Crest Road, Milton. Event by Saltwater ...

Saturday, June 27 – Sunday, June 28

Annual Kids Catch-All Fishing Tournament

Join Us For A Great Family Event! The 11th Annual ...

July

Saturday, July 04

Old Fashioned 4th of July with Fireworks at Dusk

9am-10pm, Old-Fashioned Games for Children Second Street, Lewes, at 9 am.&...

Sunday, July 05

Independence Day Fireworks in Rehoboth Beach

The City of Rehoboth Beach is set to put the “ooh” ...

<https://www.rehoboth.com/events-a-activities/calendar-of-events.html#May>

2026 Free fishing Days!

In celebration of National Fishing and Boating Week, June 6-14, 2026, The DNREC Division of Fish and Wildlife has designated June 6 and 7 as free fishing days when anyone may fish in Delaware’s waters without a fishing license. Anglers age 16 and older must still obtain a free FIN number to participate in the free fishing days.

♻️ RECYCLING IN DELAWARE ♻️



ACCEPTED IN BIN

Place only these materials loose, empty, clean and dry in your recycling cart or dumpster:



PAPER

Magazines, junk mail, paper bags, office paper, newspaper, etc.



PLASTIC CONTAINERS

Leave lids on.



CANS, BOTTLES, JARS

Remove lids and recycle.

KEEP YOUR RECYCLING OUT OF BAGS. PLACE ITEMS LOOSE IN THE BIN.



CARTONS, PAPERBOARD, CORRUGATED CARDBOARD



NOT ACCEPTED IN BIN

Keep these items out of your recycling cart or dumpster:



SHREDDED PAPER



FROZEN FOOD/ REFRIGERATED CONTAINERS



FOOD WASTE



COFFEE CUPS

Visit the website to learn about recycling these items:



BATTERIES



STYROFOAM



GARBAGE



MIRRORS AND WINDOW GLASS



TANGLERS Garden hoses, string lights, nylon rope, etc.



SCRAP METAL



PLASTIC BAGS

Return to retail store.



ELECTRONICS



YARD WASTE

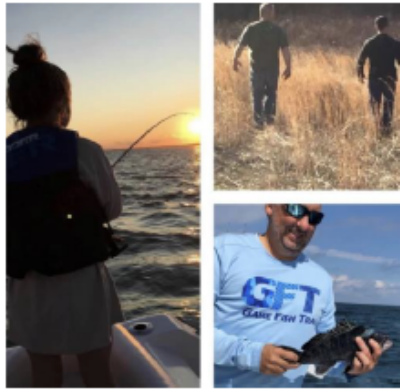


FOR MORE INFORMATION VISIT:
WWW.DSWA.COM OR CALL 1-800-404-7080

Port Classifieds



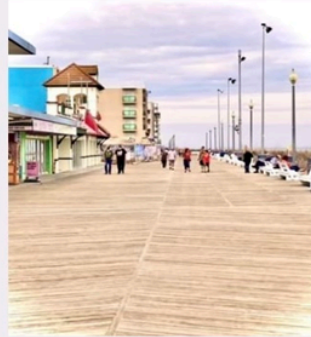
www.gamefishtrail.com



R&S PHOTO VENTURE

Contact Randy by text or call at
(302-690-5816)

I do photos on canvas, framed prints, photo
blankets, mugs, pet portraits, etc...



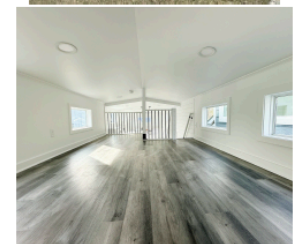
Mason Park Models



410-627-3682

www.MasonParkModels.com

*Welcome to your home
away from home*
High end craftsmanship focused on
providing a superior quality Park Model Rv



RVIA
RECREATION VEHICLE



Monkton Leadership Coaching

Transformational Leadership Coaching for Success

- Career coaching
- Transitions coaching
- Leadership development

Mary Hough
Owner/Coach
monktonleadershipcoaching.com
410 371-7933
Monktoncoach@gmail.com

Whether you're navigating a promotion, exploring new opportunities, or at a crossroads in your career-seeking growth, change, or renewed direction. I help you turn uncertainty into clarity and confidence.

Through leadership coaching and HR consulting, we'll uncover your path and take intentional steps forward.

Your next chapter starts here with Monkton Leadership Coaching



Port resident Melissa (Melle) Kirk is a Certified Integrative Nutrition Health Coach and has been logging coaching hours towards her National Board of Health and Wellness Coaching certification. In order to complete her hours and sit for the board exam, she is offering up to 6 free health coaching sessions (per person) online via Zoom. Melle has helped clients through meal planning challenges, exercise routines, motivation, graduate students structuring their dissertation work, work-life balance, creativity, and more. Those interested should reach out to see if these services might be a fit, or to refer a friend or family member. Contact Melle via text or call 703-597-3579 or email her at bewellwithmelle@gmail.com