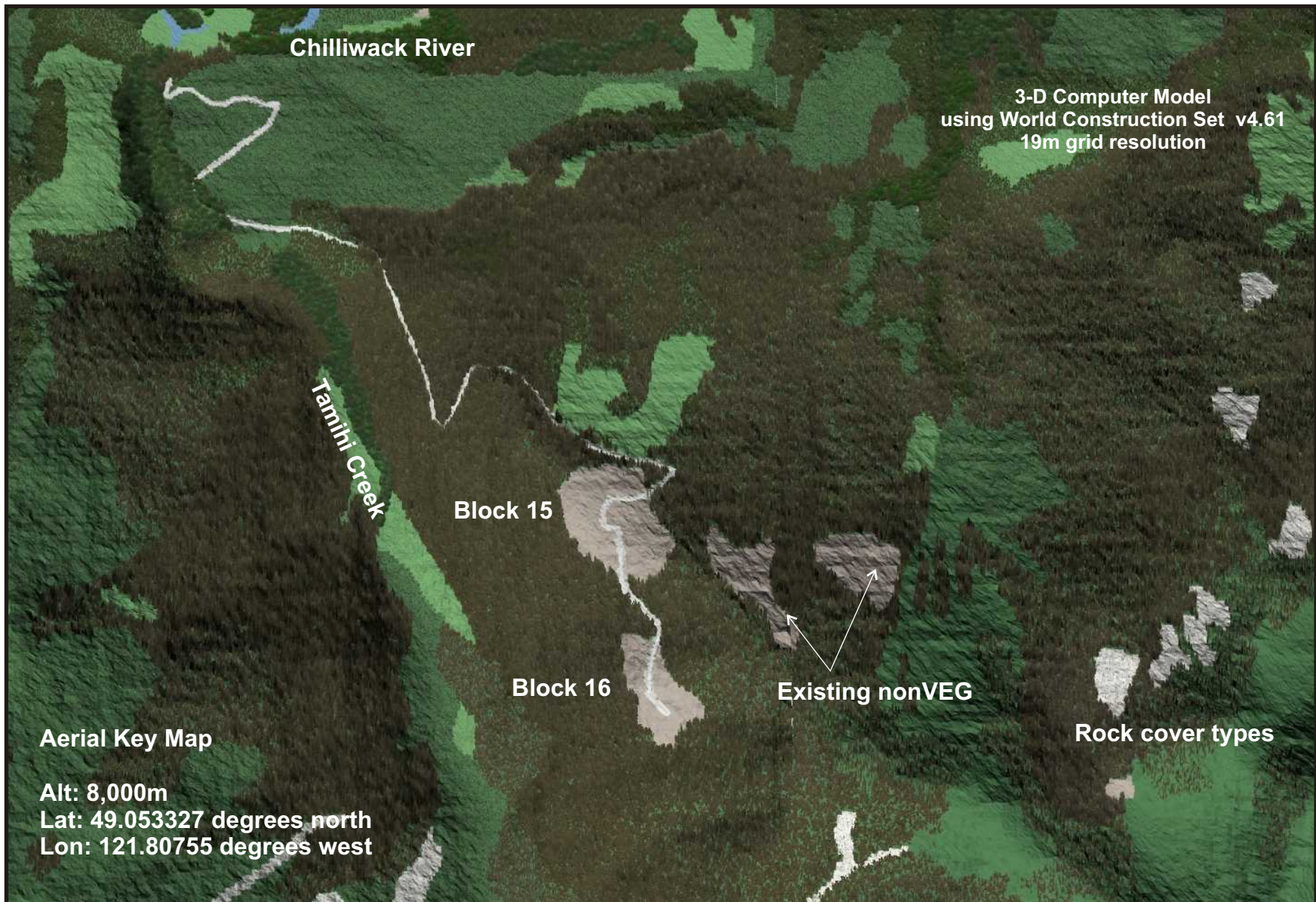




**Resource Design Inc**  
Forest and Land Planning Services

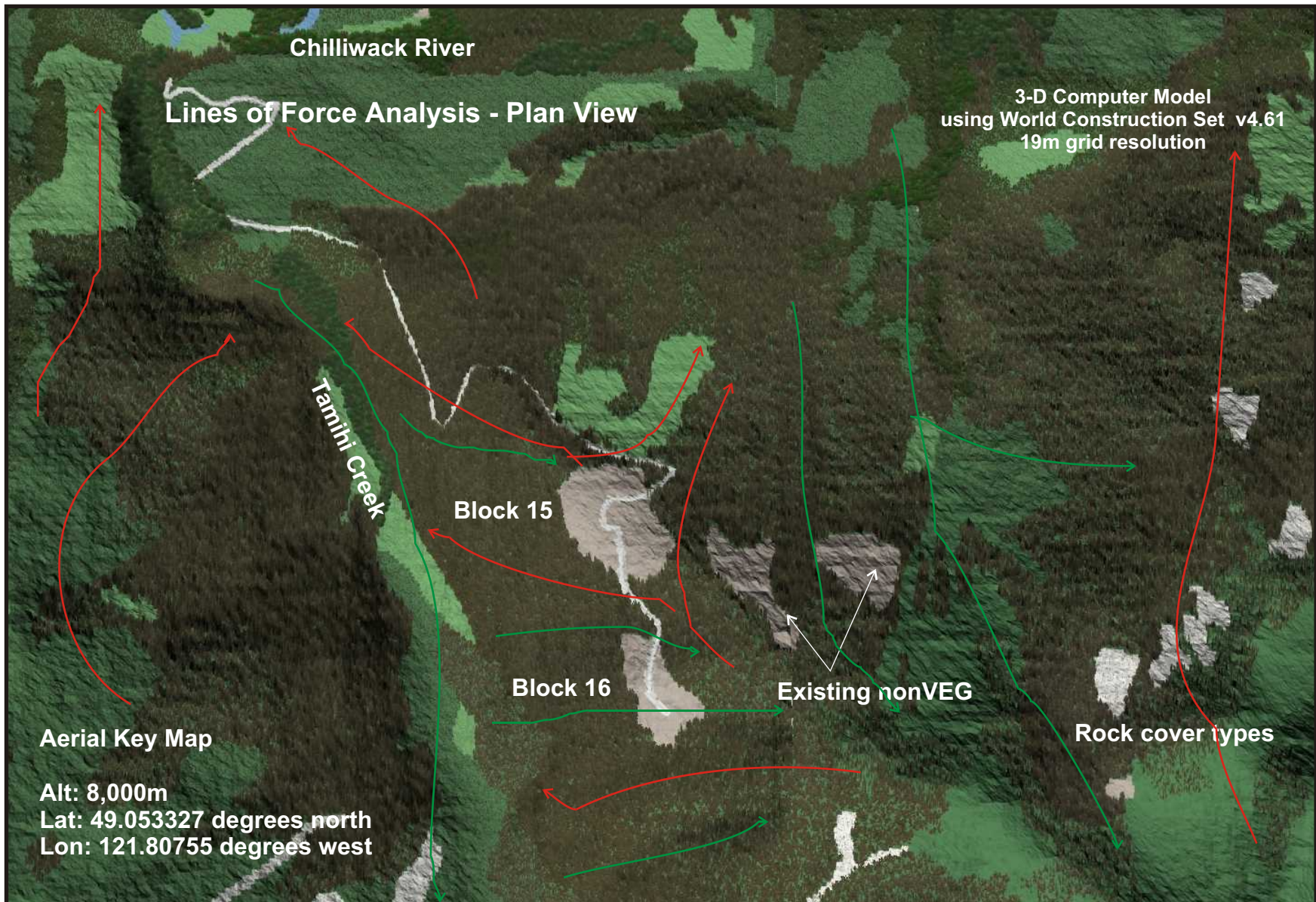
*Tamihi Logging Company Ltd.*  
F.L. A20542  
*Visual Assessment Package for Tamihi Creek Blocks 15 and 16*  
August 30, 2000



*Tamihi Logging Company Ltd.*  
F.L. A20542  
**Visual Assessment Package Tamihi Creek for Blocks 15 and 16**  
August 30, 2000

**Resource Design Inc**  
Forest and Land Planning Services





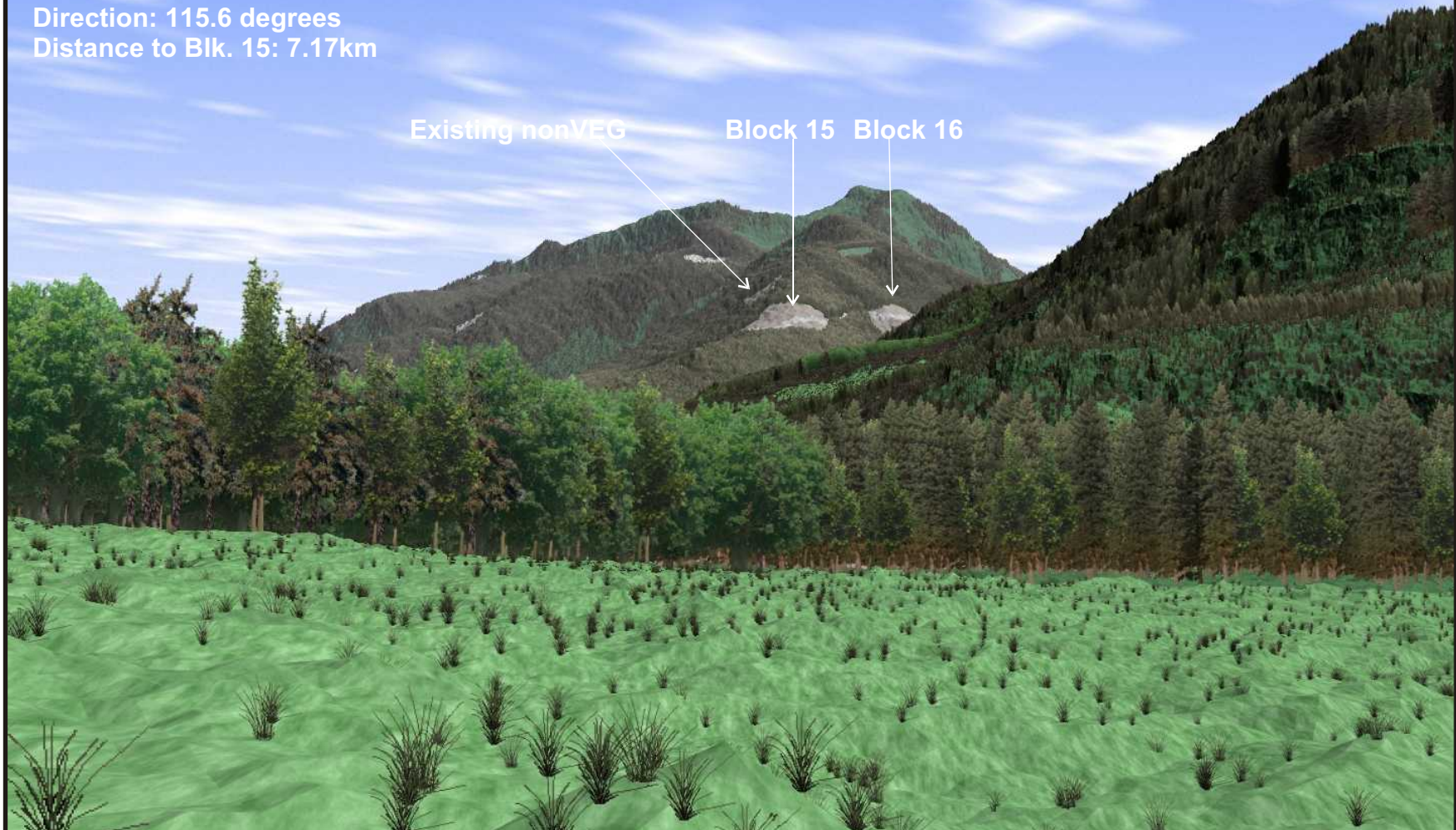
*Tamihi Logging Company Ltd.*  
F.L. A20542  
**Visual Assessment Package Tamihi Creek for Blocks 15 and 16**  
August 30, 2000

**Resource Design Inc**  
Forest and Land Planning Services



Viewpoint 264 Location:  
Chilliwack River Road near Edwards Road  
Lat: 49.080081  
Lon: 121.89773  
Elv: 92m  
Direction: 115.6 degrees  
Distance to Blk. 15: 7.17km

3-D Computer Model  
using World Construction Set v4.61  
19m grid resolution, 45 Degree FOV



*Tamihi Logging Company Ltd.*  
F.L. A20542

**Resource Design Inc**  
Forest and Land Planning Services

**Visual Assessment Package Tamihi Creek for Blocks 15 and 16**  
August 30, 2000



### Lines of Force Analysis

Blocks rise on convex slopes separated by forested concavities  
Continuity and flow of forest canopy maintained between blocks  
Upper edge repeats rounded form of mid-slope landform  
Lower edges obscured by intervening landform breaks and forest cover  
Roads visible but non-continuous (exaggerated in rendering)  
Verbal definition: meets partial retention, subordinate in the landscape.

*Tamihi Logging Company Ltd.*  
F.L. A20542

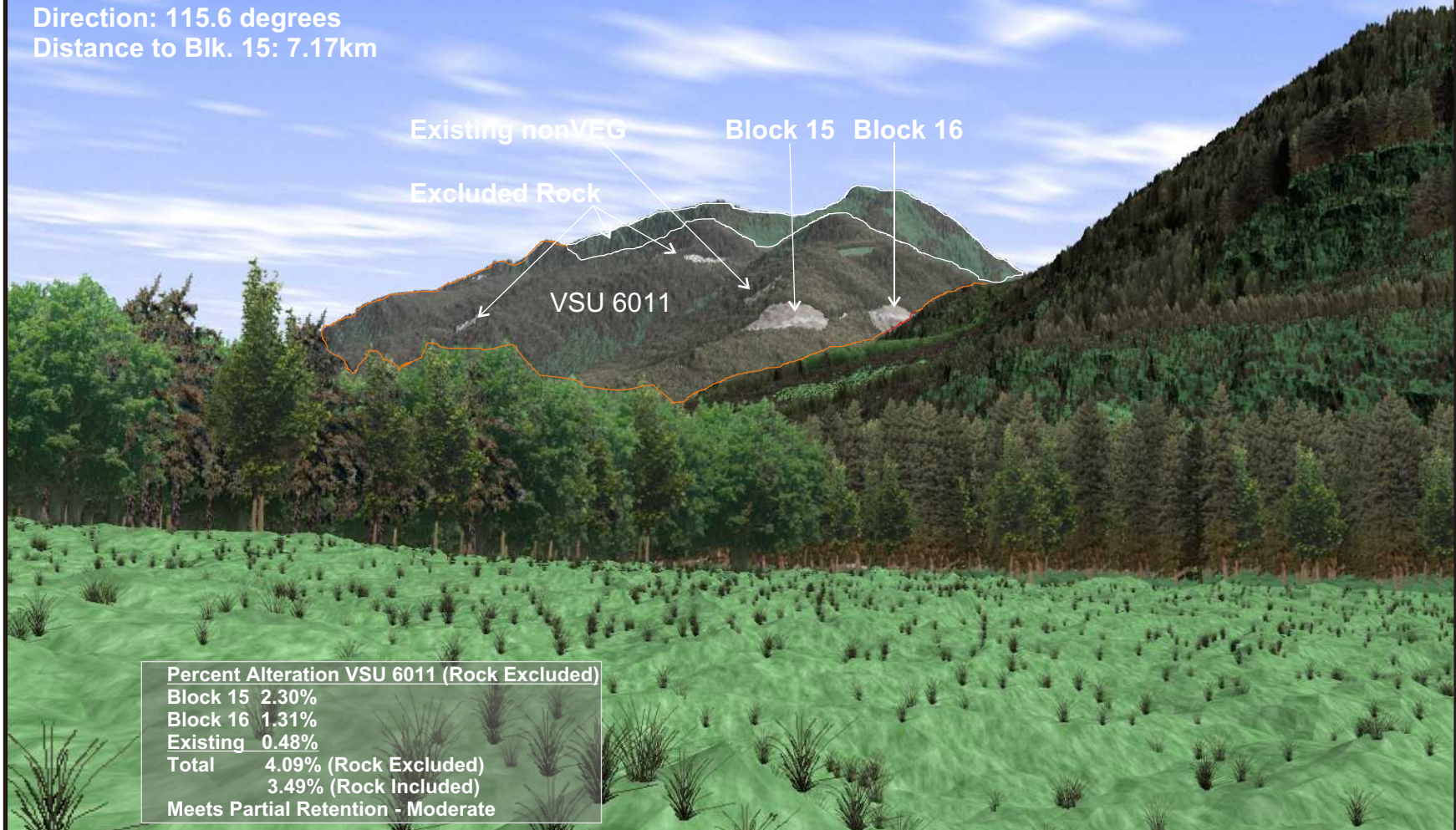
**Visual Assessment Package Tamihi Creek for Blocks 15 and 16**  
August 30, 2000

**Resource Design Inc**  
Forest and Land Planning Services



Viewpoint 264 Location:  
Chilliwack River Road near Edwards Road  
Lat: 49.080081  
Lon: 121.89773  
Elv: 92m  
Direction: 115.6 degrees  
Distance to Blk. 15: 7.17km

3-D Computer Model  
using World Construction Set v4.61  
19m grid resolution, 45 Degree FOV



Percent Alteration VSU 6011 (Rock Excluded)	
Block 15	2.30%
Block 16	1.31%
Existing	0.48%
Total	4.09% (Rock Excluded)
	3.49% (Rock Included)
Meets Partial Retention - Moderate	

Tamihi Logging Company Ltd.  
F.L. A20542

Visual Assessment Package Tamihi Creek for Blocks 15 and 16  
August 30, 2000

**Resource Design Inc**  
Forest and Land Planning Services



Viewpoint Location:  
VP 265 Chilliwack River Road  
at Sheldon Road entrance to Subdivision  
Lat: 49.079757  
Lon: 121.87219  
Elv: 99m  
Direction: 123.6 degrees  
Distance to Blk. 15: 5.5km

3-D Computer Model  
using World Construction Set v4.61  
19m grid resolution, 45 degree FOV



*Tamihi Logging Company Ltd.*  
F.L. A20542

**Resource Design Inc**  
Forest and Land Planning Services

*Visual Assessment Package Tamihi Creek for Blocks 15 and 16*  
August 30, 2000

**Viewpoint Location:**  
VP 265 Chilliwack River Road  
at Sheldon Road entrance to Subdivision  
Lat: 49.079757  
Lon: 121.87219  
Elv: 99m  
Direction: 123.6 degrees  
Distance to Blk. 15: 5.5km

**3-D Computer Model**  
using World Construction Set v4.61  
19m grid resolution, 45 degree FOV  
Winter Condition



**Tamihi Logging Company Ltd.**  
F.L. A20542

**Visual Assessment Package Tamihi Creek for Blocks 15 and 16**  
August 30, 2000

**Resource Design Inc**  
Forest and Land Planning Services





Viewpoint Location:  
VP 265 Chilliwack River Road  
at Sheldon Road entrance to Subdivision

3-D Computer Model  
with Photo Inset  
using World Construction Set v4.61  
19m grid resolution, 45 degree FOV

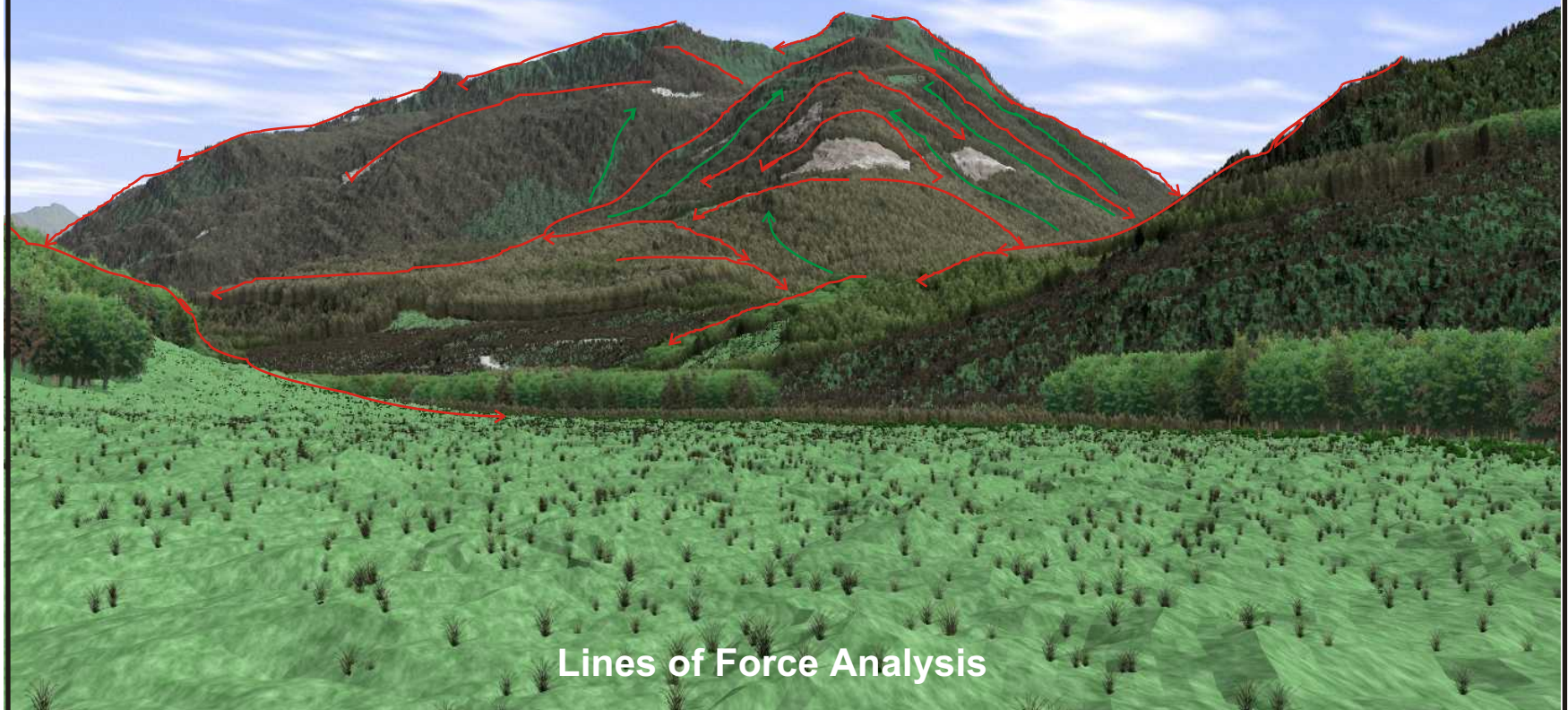
***Tamihi Logging Company Ltd.***  
**F.L. A20542**  
***Visual Assessment Package for Tamihi Creek Blocks 15 and 16***  
**August 30, 2000**



Viewpoint Location:  
VP 265 Chilliwack River Road  
at Sheldon Road entrance to Subdivision  
Lat: 49.079757  
Lon: 121.87219  
Elv: 99m  
Direction: 123.6 degrees  
Distance to Blk. 15: 5.5km

3-D Computer Model  
using World Construction Set v4.61  
19m grid resolution, 45 degree FOV

Rock



Lines of Force Analysis

Tamihi Logging Company Ltd.  
F.L. A20542

Visual Assessment Package Tamihi Creek for Blocks 15 and 16  
August 30, 2000

**Resource Design Inc**  
Forest and Land Planning Services



Viewpoint Location:  
VP 265 Chilliwack River Road  
at Sheldon Road entrance to Subdivision  
Lat: 49.079757  
Lon: 121.87219  
Elv: 99m  
Direction: 123.6 degrees  
Distance to Blk. 15: 5.5km

3-D Computer Model  
using World Construction Set v4.61  
19m grid resolution, 45 degree FOV

Rock Types Excluded from VSU6011  
for % alteration measure

Existing nonVEG

Block 15

Block 16

VSU 6011

Percent Alteration VSU 6011 (Rock Excluded)	
Block 15	1.25%
Block 16	0.51%
Existing	0.86%
Total	2.62% (Rock Excluded)
Total	2.39% (Rock Included)
Meets Partial Retention - High	

Tamihi Logging Company Ltd.  
F.L. A20542

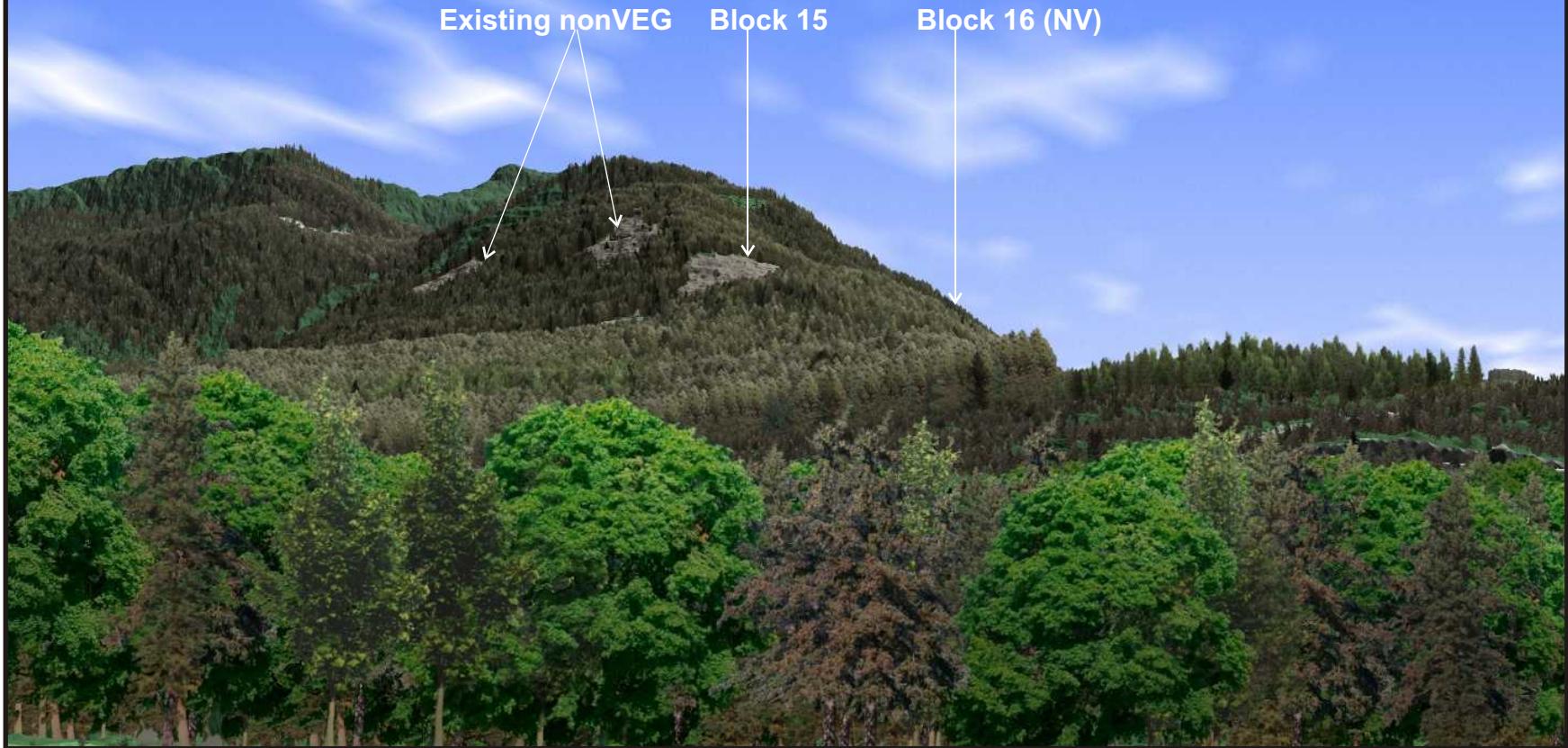
**Resource Design Inc**  
Forest and Land Planning Services

Visual Assessment Package Tamihi Creek for Blocks 15 and 16  
August 30, 2000



Viewpoint 266 Location:  
Chilliwack River Road at Chilliwack River  
Kayaking Site (Tamihi Recreation Site)  
Lat: 49.071279  
Lon: 121.83990  
Elv: 117m  
Direction: 137.0 degrees  
Distance to Blk. 15: 3.11km

3-D Computer Model  
using World Construction Set v4.61  
19m grid resolution, 45 degree FOV



*Tamihi Logging Company Ltd.*  
F.L. A20542

*Visual Assessment Package Tamihi Creek for Blocks 15 and 16*  
August 30, 2000

**Resource Design Inc**  
Forest and Land Planning Services

Viewpoint Location:  
VP 268 Chilliwack River Road  
at Tolmie's Ranch Road  
Lat: 49.075869  
Lon: 121.81187  
Elv: 171m  
Direction: 175 degrees  
Distance to Blk. 15: 2.61km

3-D Computer Model  
using World Construction Set v4.61  
19m grid resolution, 45 degree FOV  
Winter Condition



*Tamihi Logging Company Ltd.*  
F.L. A20542

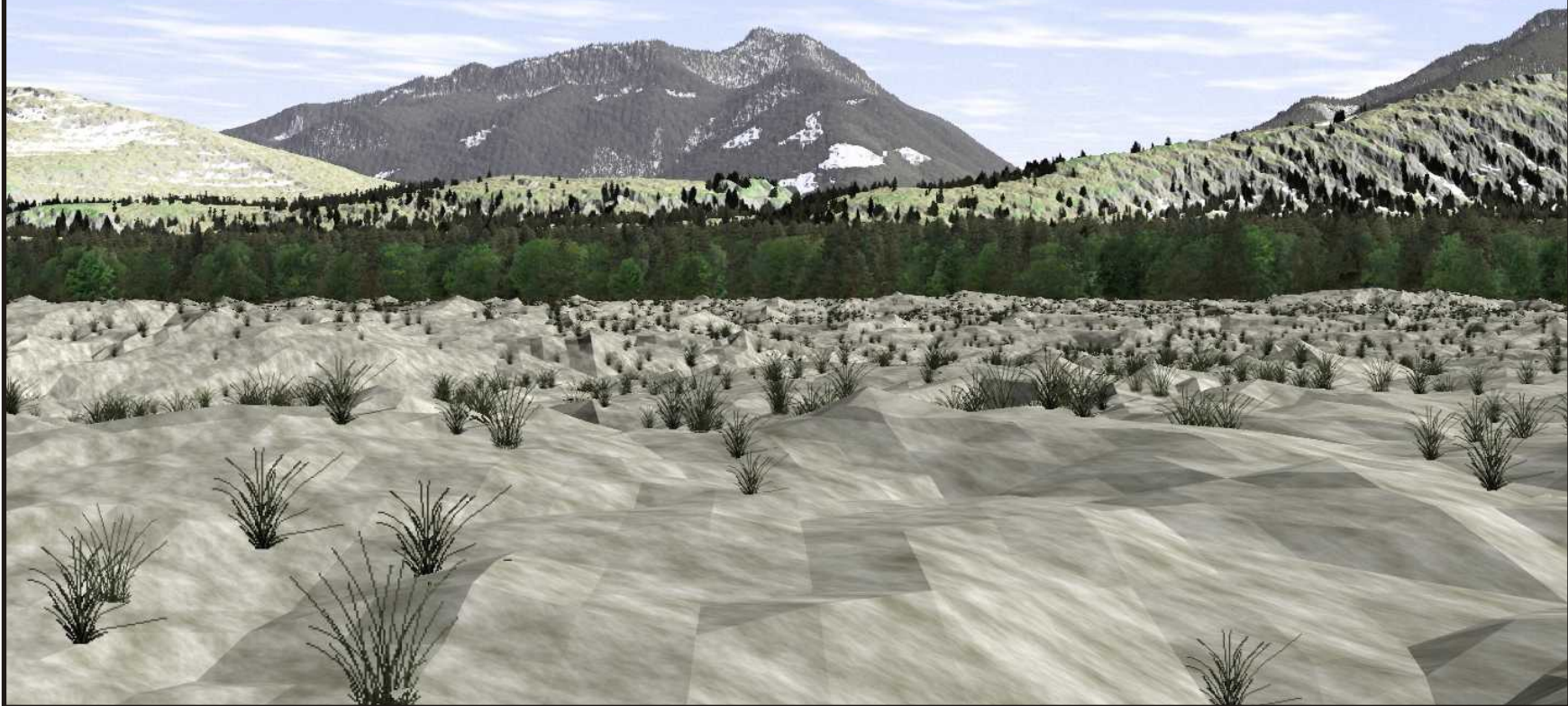
**Resource Design Inc**  
Forest and Land Planning Services

*Visual Assessment Package Tamihi Creek for Blocks 15 and 16*  
August 30, 2000



**Viewpoint Location:**  
Luckakuck Road at Young  
300m west of Highway 1 Junction (VP 323)  
Lat: 49.144446  
Lon: 121.94543  
Elv: 18m  
Direction: 135.2 degrees  
Distance to Blk. 14.2 km

**3-D Computer Model**  
using World Construction Set v4.61  
19m grid resolution, 33 degree FOV  
Winter Condition



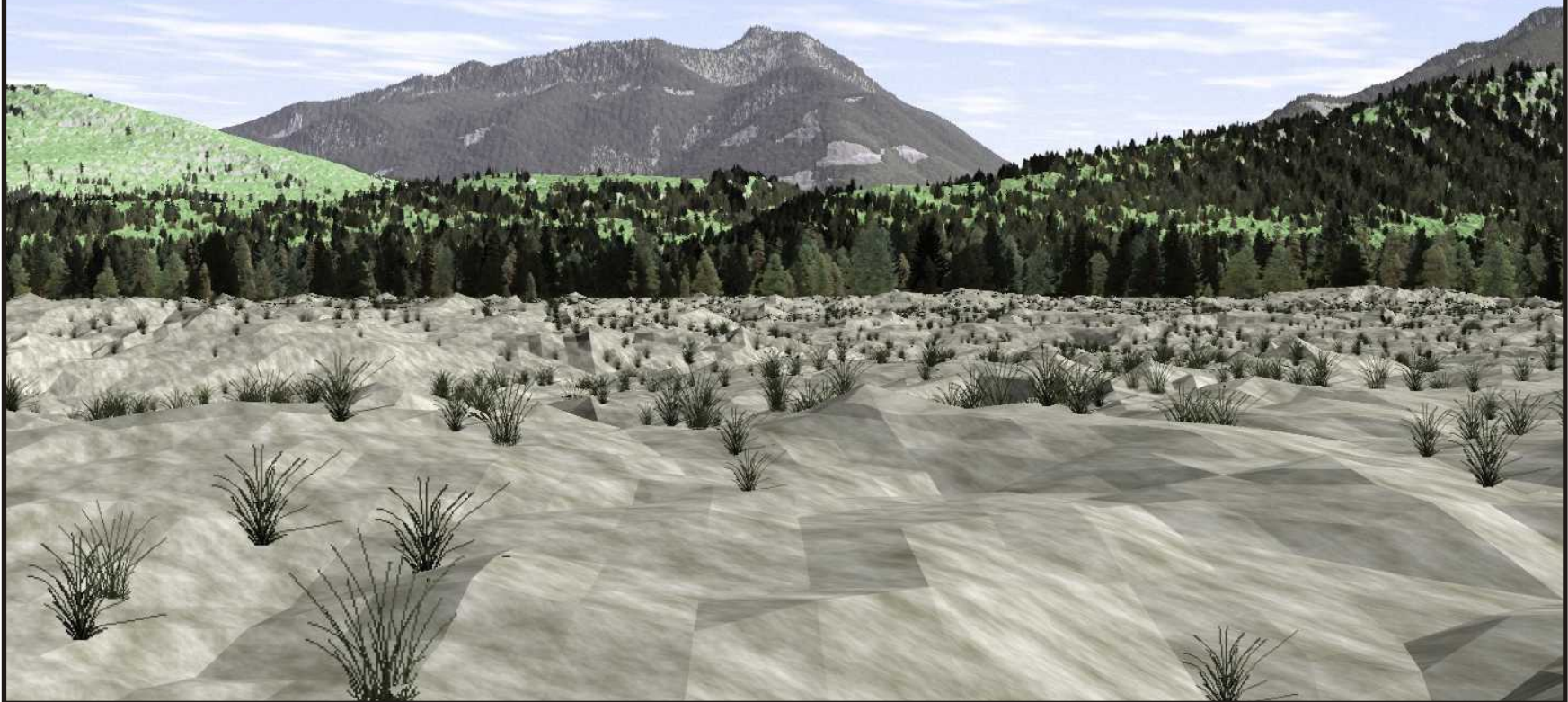
**Tamihi Logging Company Ltd.**  
F.L. A20542

**Visual Assessment Package Tamihi Creek for Blocks 15 and 16**  
August 30, 2000

**Resource Design Inc**  
Forest and Land Planning Services

**Viewpoint Location:**  
**Luckakuck Road at Young**  
**300m west of Highway 1 Junction (VP 323)**  
**Lat: 49.144446**  
**Lon: 121.94543**  
**Elv: 18m**  
**Direction: 135.2 degrees**  
**Distance to Blk. 14.2 km**

**3-D Computer Model**  
**using World Construction Set v4.61**  
**19m grid resolution, 33 Degree FOV**  
**Summer Condition**



**Tamihi Logging Company Ltd.**  
**F.L. A20542**

**Visual Assessment Package Tamihi Creek for Blocks 15 and 16**  
**August 30, 2000**

**Resource Design Inc**  
Forest and Land Planning Services





Luckakuck Road at Young  
300m west of Highway 1 Junction (VP 323) 50mm 140 degrees



VP 264A - Chilliwack Lake Road at east end of Edwards Road  
50mm 120 degrees



VP 266 - Chilliwack Lake Road at bridge crossing  
and kayak area, 80mm 140 degrees



VP 266 - Chilliwack Lake Road at bridge crossing  
and kayak area, 50mm 140 degrees





VP 265 - Chilliwack Lake Road at Sheldon Road  
50mm 120 degrees



VP 265 - Chilliwack Lake Road at Sheldon Road  
80mm 120 degrees



VP 268 - Chilliwack Lake Road  
at Tolmie's Ranch Road, 50mm 180 degrees



VP 264 - Chilliwack Lake Road  
at open field west of Edwards Road, 50mm 120 degrees