



P5



P6



P8



P10



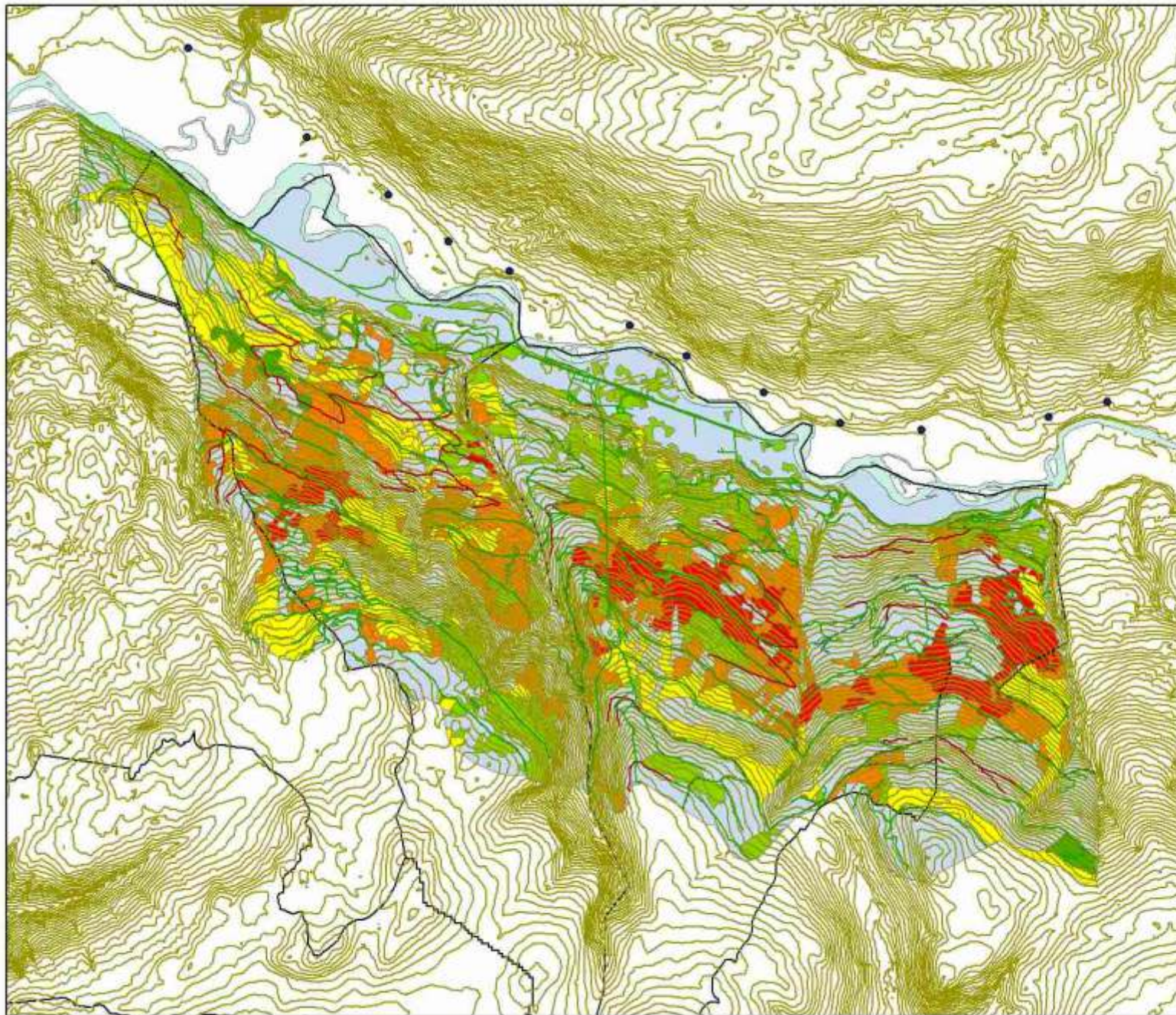
P12



P14

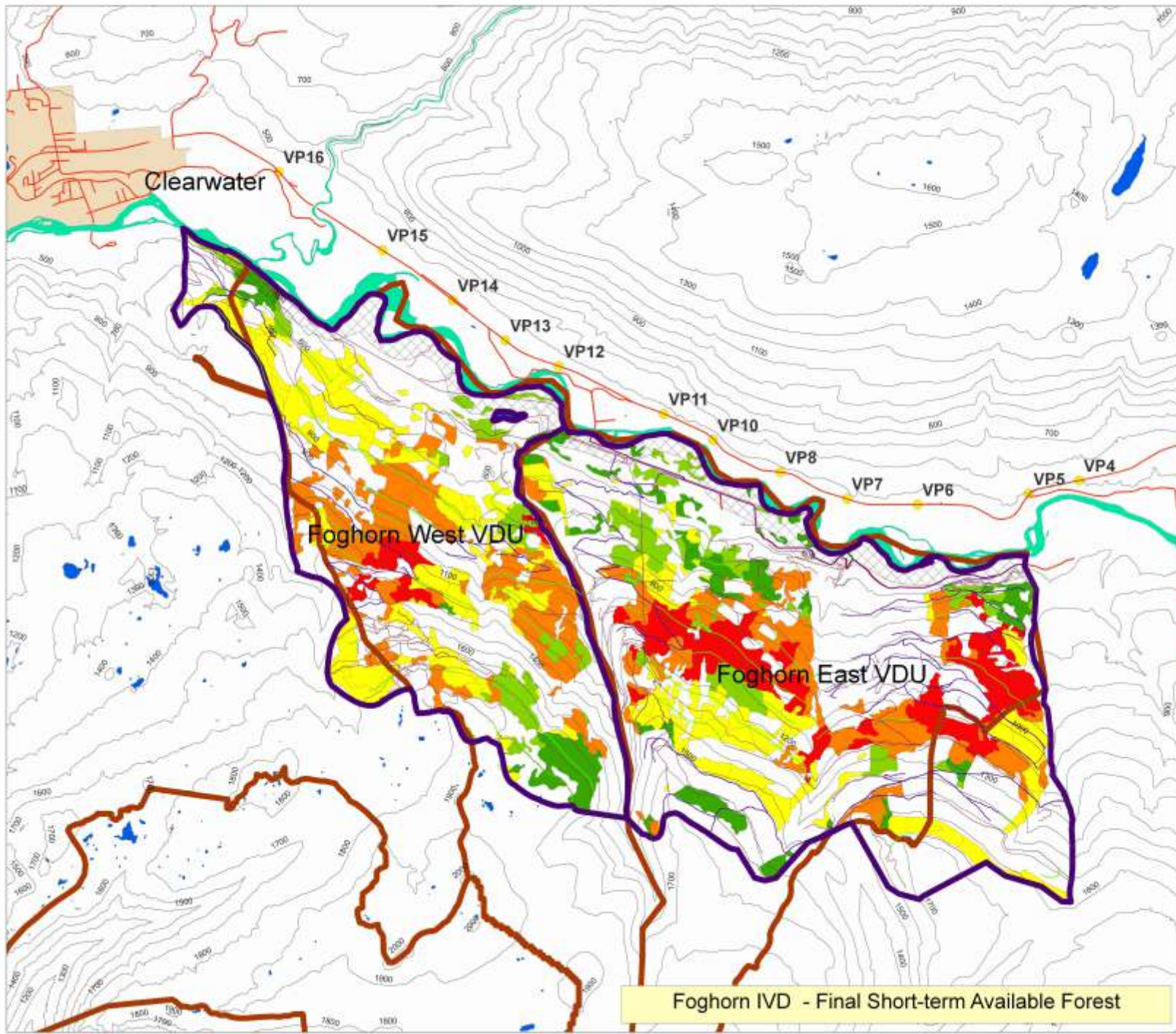
Photos taken in January, 2010 in unavoidably poor lighting conditions.
North-facing slopes to be re-photographed in summer conditions as Phase 2a of the
IVD contract agreement.

Foghorn IVD Photo Panoramas



Legend

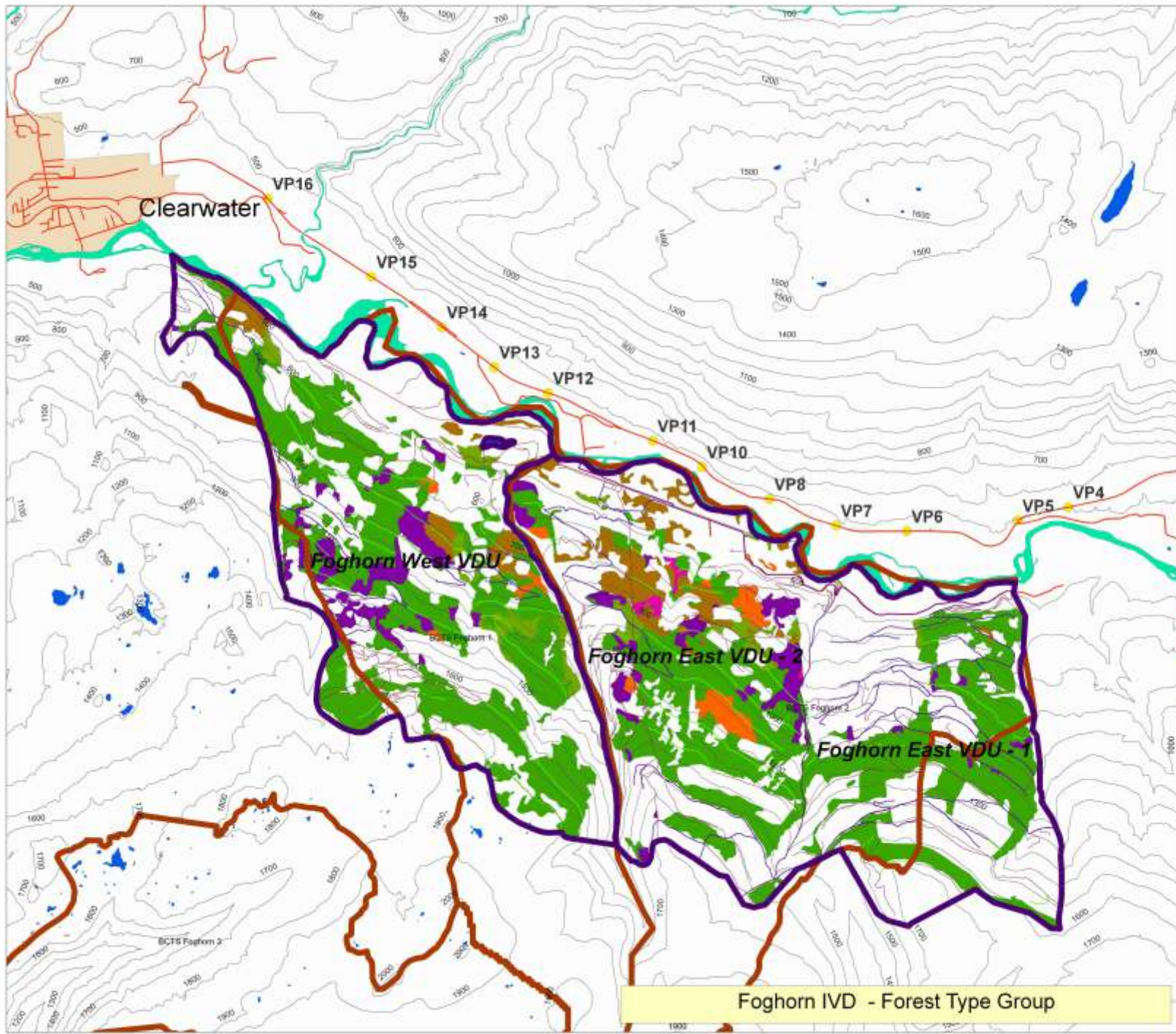
- PPTSUM
- MD_ROADS_1
- SD_ROADS
- TRIMROADS_VOLUAGG
- km_baseptfVDUAGG
- km_knode_VDUAGG
- roadvd
- BC15_Roads_VDUAGG
- BC16_Gr_Areas
- RDI_SHORT_DEL1**
- VOL_HA**
- 0 - 77
- 78 - 290
- 291 - 342
- 343 - 446
- 447 - 700
- VOL_OUT
- 999_watercourse



- Legend**
- 100m Contours
 - VDU_BOUND
 - BCTS_Roads_Clip
 - BCTS_Co_Areas
 - Inv_transportROADS
 - MOOSE_VDUAGG
 - RDI_SHORT_DEL1 VOL_HA
 - 121 - 200
 - 201 - 250
 - 251 - 300
 - 301 - 400
 - 401 - 450
 - 451 - 700
 - PowerLine
 - Inv_watercourse
 - Vegetation
 - Classified_Lakes
 - Town_setbackline
 - Settlement_area

Foghorn IVD - Final Short-term Available Forest

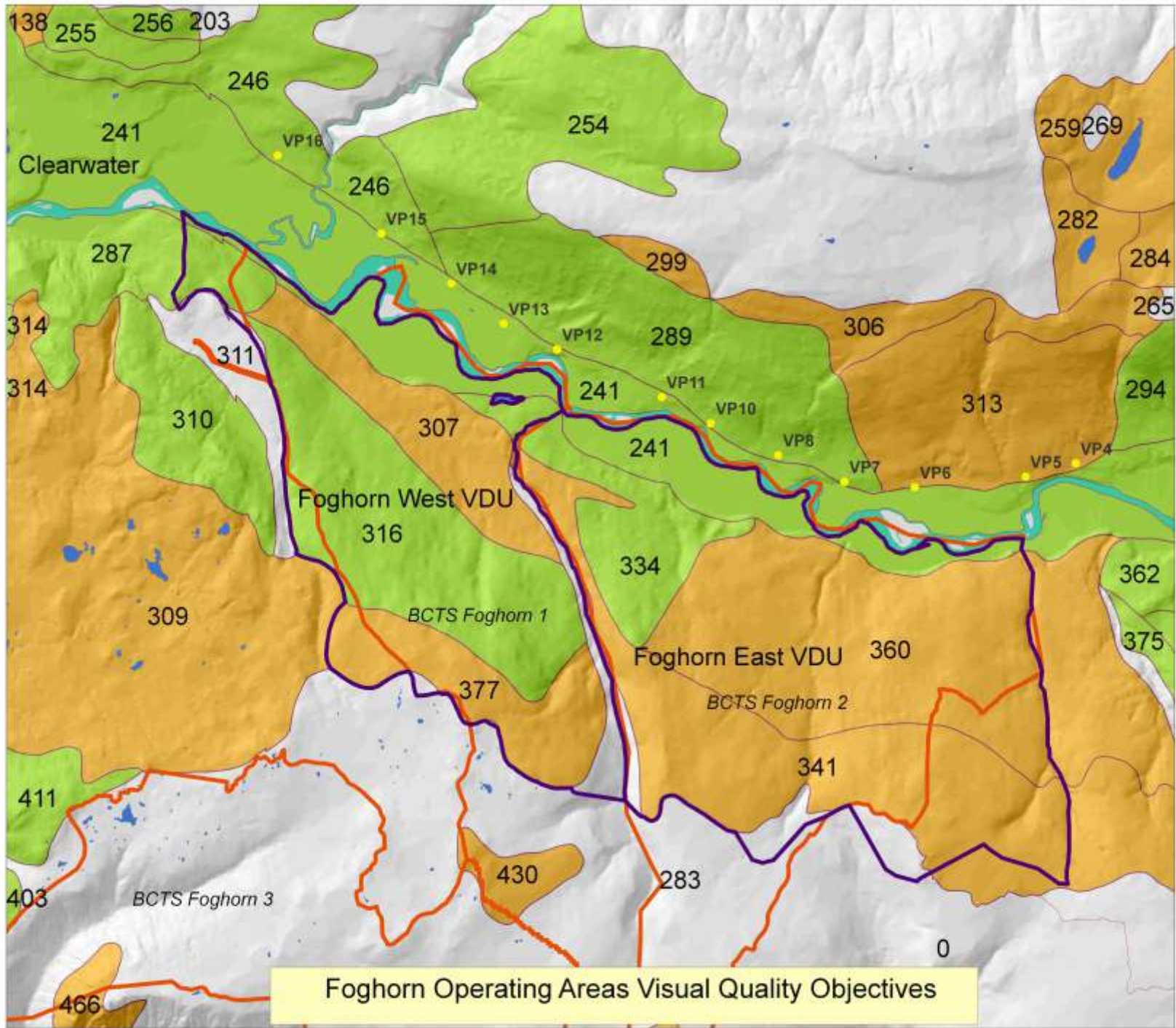




- Legend**
- 100m Contours
 - VDU_OUT
 - VDU_ROADS
 - VDU_Sections
 - VDU_SHORT_DELT
 - all other values
 - RDI_TYP**
 - CONIF
 - CON_DECID
 - DECID_CONIF
 - DECID
 - RNE_CONIF
 - RNE_DECID
 - Powerflood
 - Trk_substructure
 - Viewpoints
 - Classified_Lakes
 - Tax_valuelabile
 - Settlement_areas

Produced for
Kamloops BCTS
by
RDI Resource Design Inc
March 2010
1:20,000

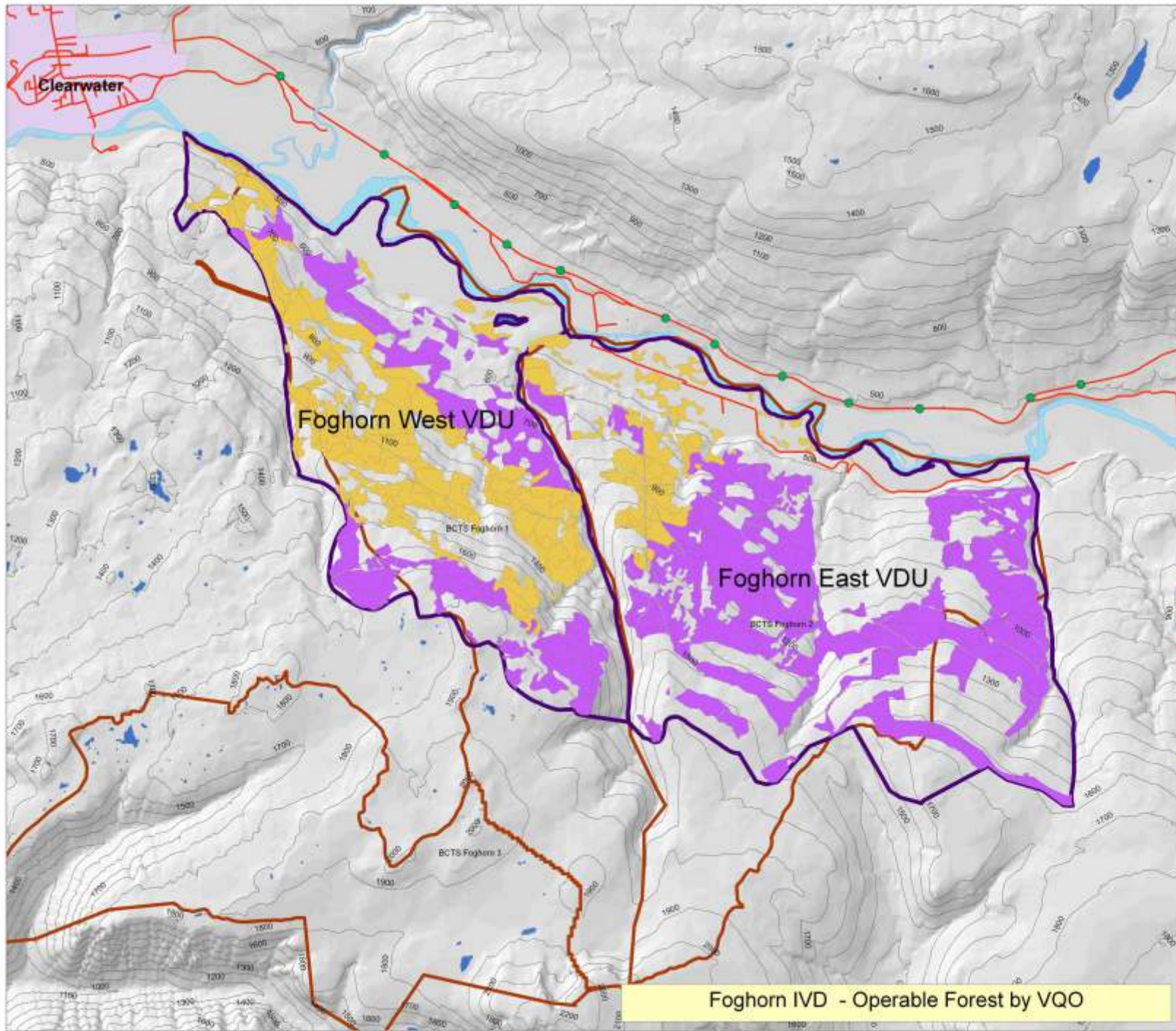
Foghorn IVD - Forest Type Group



Foghorn Operating Areas Visual Quality Objectives

- Legend**
- ISU_OUT
 - BCTS
 - Viewpoints
 - FG_Hillshade
 - Value
 - Lamp 0
 - Classified_Lines
 - Tm_waterbody
 - Tm_watercourse
 - REC_VLND
 - EVQD_CD
 - M
 - P
 - H
 - S
 - Settlement_Areas
 - WMA

1:20,000

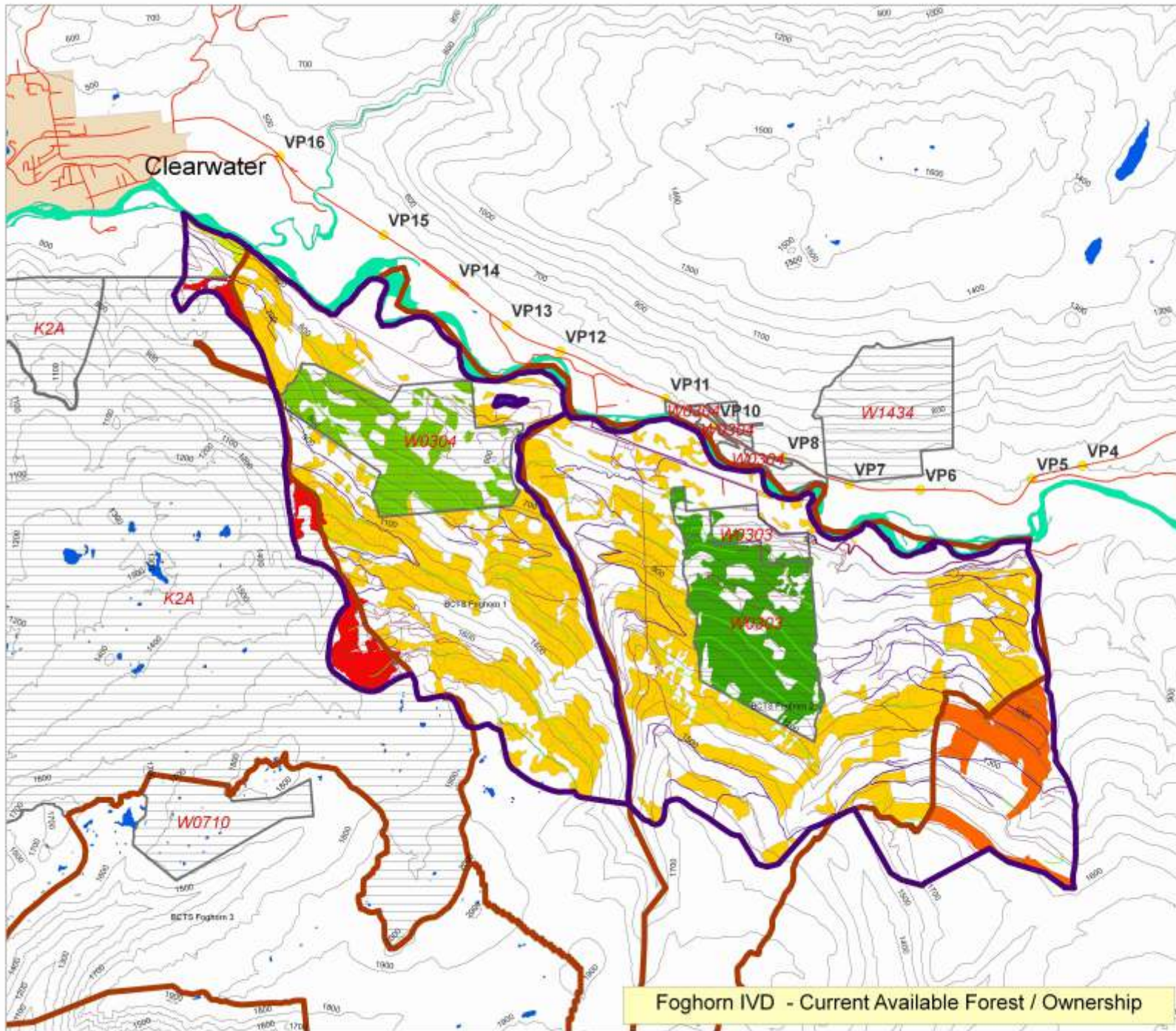


- Legend**
- current_OPEN - all other values
 - VQO**
 - VQ
 - M
 - PForest
 - VDU_OUT
 - BCTS_Cap_Areas
 - PavedRoad
 - Settlement_areas
 - River
 - 100mContours
 - FG_Hillside**
 - Value**
 - High: 254
 - Low: 0
 - Classified_Lakes

Produced for
Kamloops BCTS
by
RDI Resource Design Inc.
March 2010
1:20,000



Foghorn IVD - Operable Forest by VQO

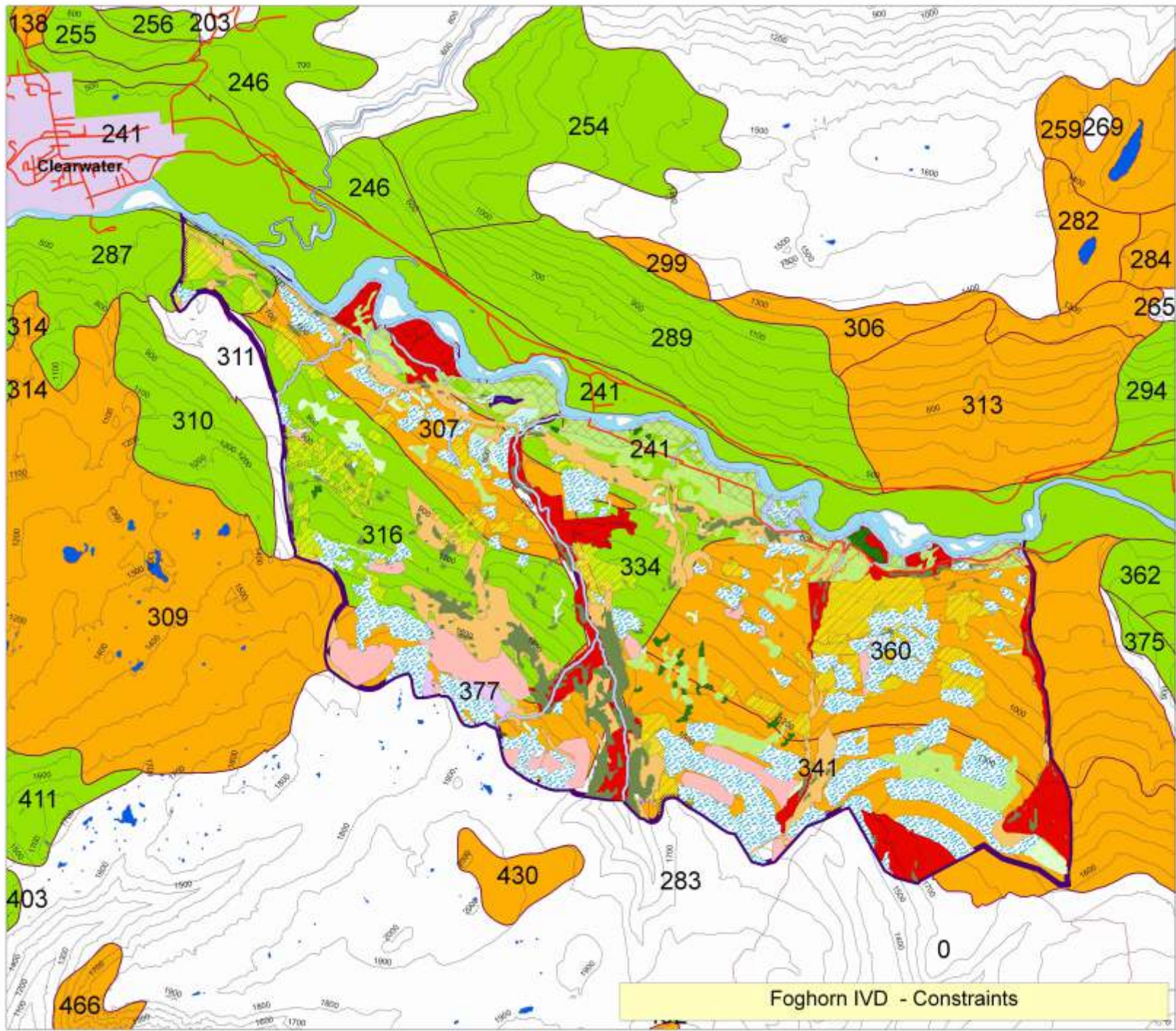


Foghorn IVD - Current Available Forest / Ownership

- Legend**
- 100m Contours
 - VDU_OUT
 - W0_SHORT_DELS
 - all other values
 - LICENCE**
 - CAMFOR
 - RGGF42A
 - W0904A
 - W0904B
 - W0900
 - BCTS
 - Paved Road
 - Imp. watercourse
 - Viewpoints
 - Classified Lakes
 - Title water bodies
 - Railroads/roads

Produced for
Karristop BCTS
by
BDI Resource Design Inc
March 2018
1:20,000





Legend

- Parcel Road
- Settlement Area
- River
- MOOSE_VSLAGS
- PRAIRIE_AGO
- YoungFD
- VIBLL_VEG01
- YOUNGSKRSE_F2
- VIBLL
- PForest
- Low_VOL_100mShr
- HPOD
- VDUAGG_BCTS_Heck
- VDUAGG_FTEN_BK
- VDUAGG_SlopeWet
- VDUAGG_OMMA
- Wetland_Sensitivity_VDU
- ForestHealth_VDU
- VDU_OUT
- 100mContours
- Classified_Lakes

REC_VLND

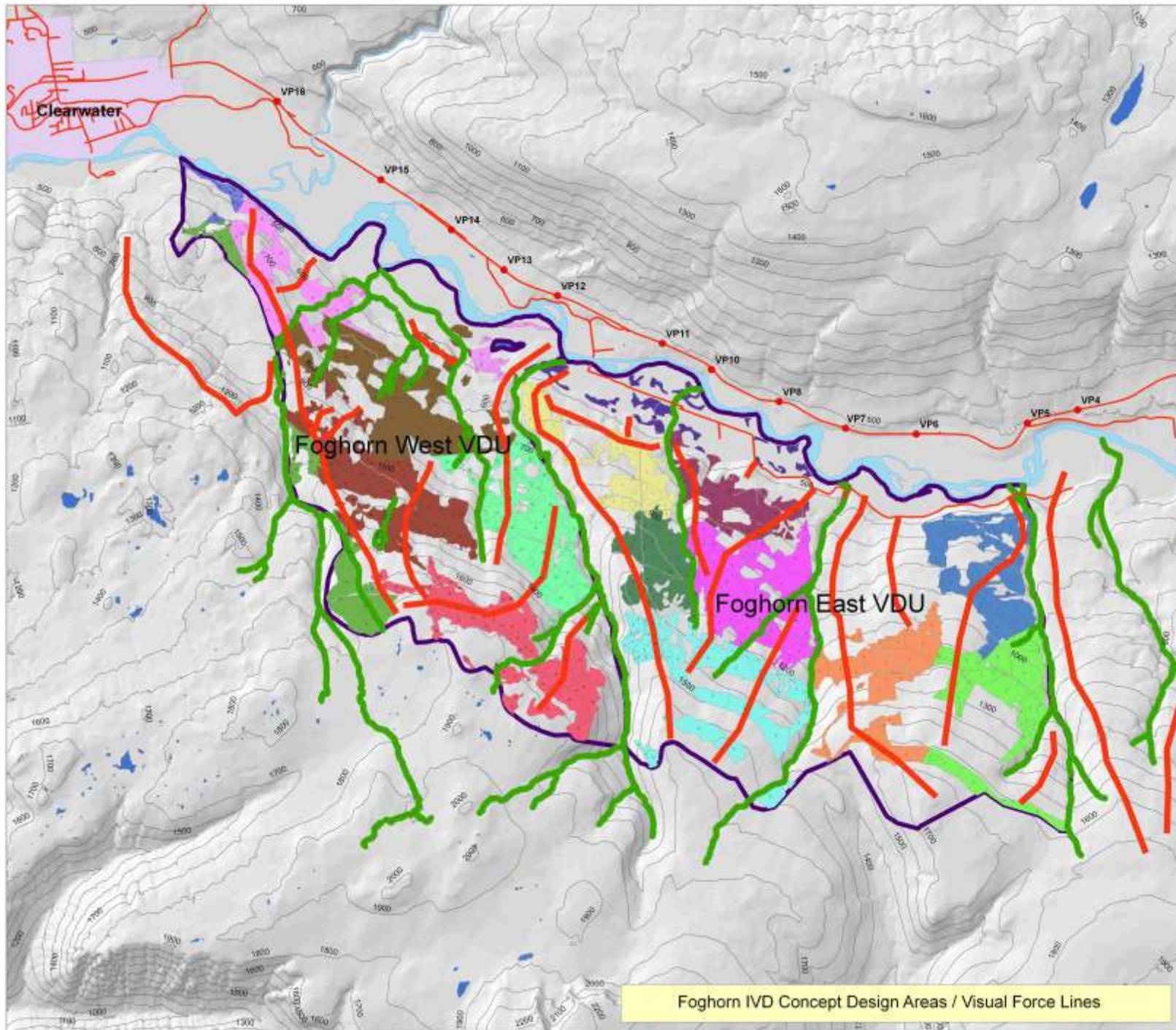
- M
- P
- PR
- R

EVGO_CD

Produced for
Kamloops BCTS
by
RDI Resource Design Inc
March 2010

1:20,000

Foghorn IVD - Constraints

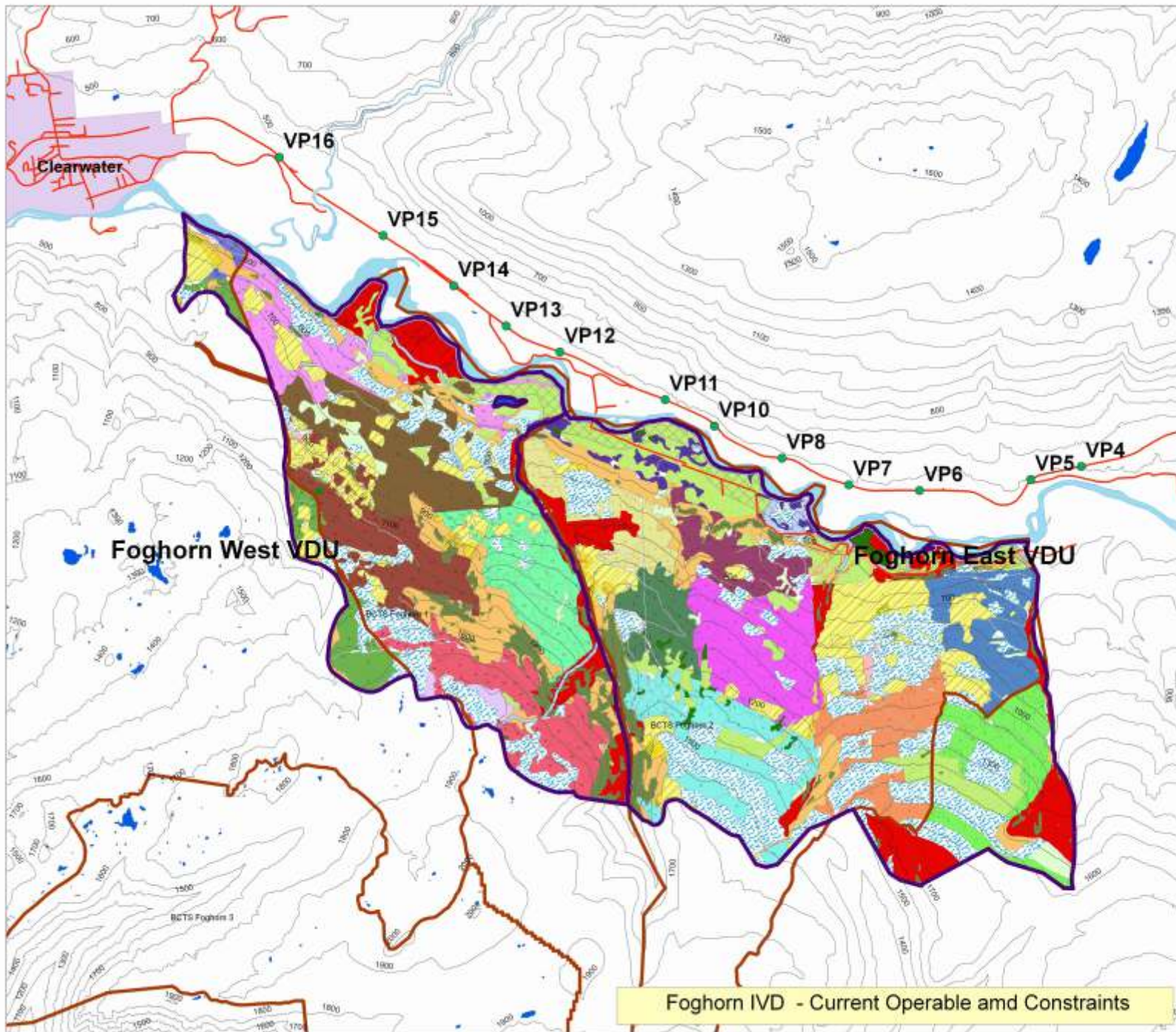


- Legend**
- PPointM
 - PavedRoads
 - LDFConvexity
 - Stream16
 - Stream12
 - Stream10
 - Stream4
 - Stream5
 - Stream7
 - Settlement_areas
 - VDU_OUT
 - River
 - 100mContours
- FG_Hillshade**
- Value
- High : 254
 - Low : 0
 - Classified_Lakes

Produced for
Kamloops BCTS
by
RDI Resource Design Inc
March 2010

1:20,000

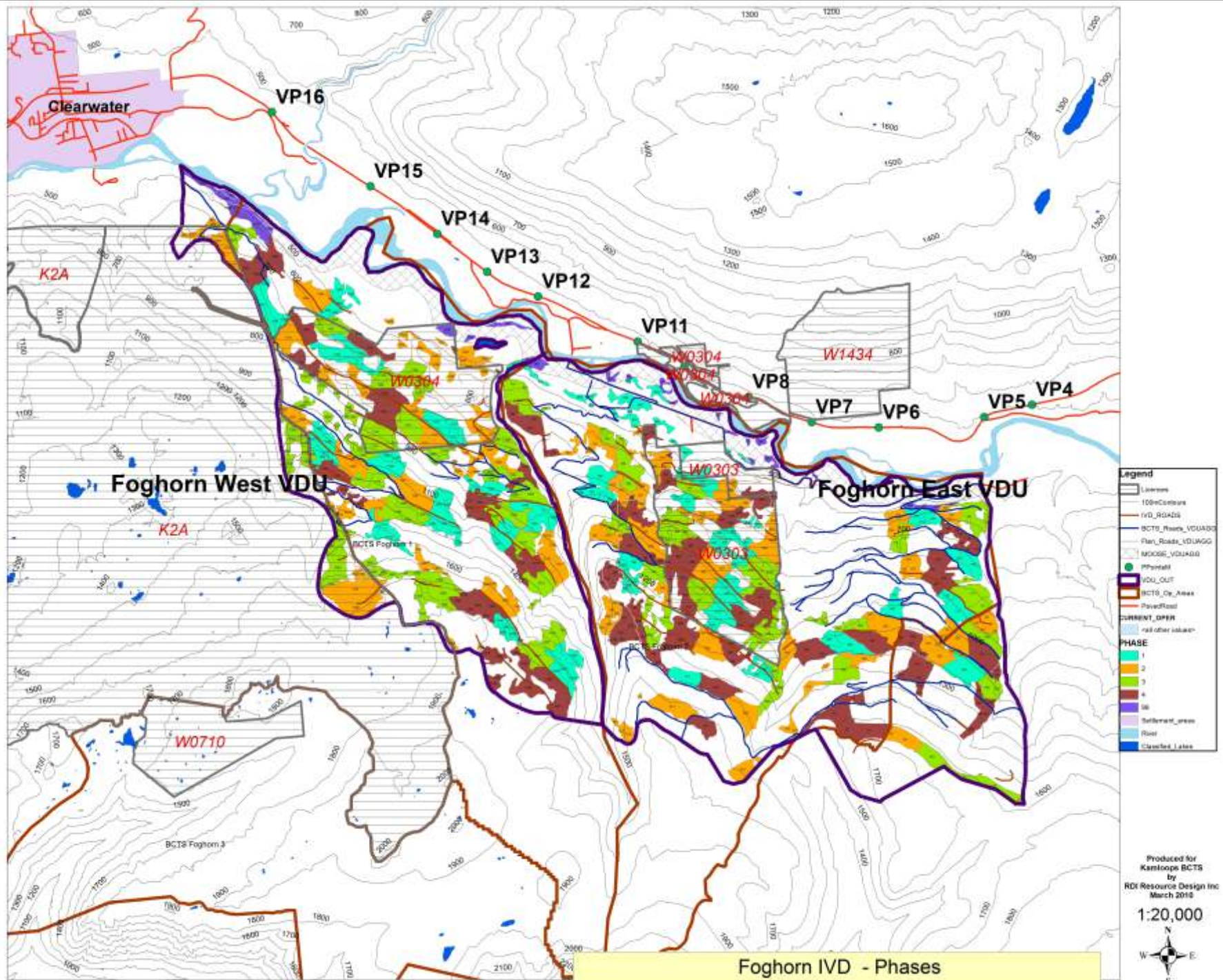
Foghorn IVD Concept Design Areas / Visual Force Lines



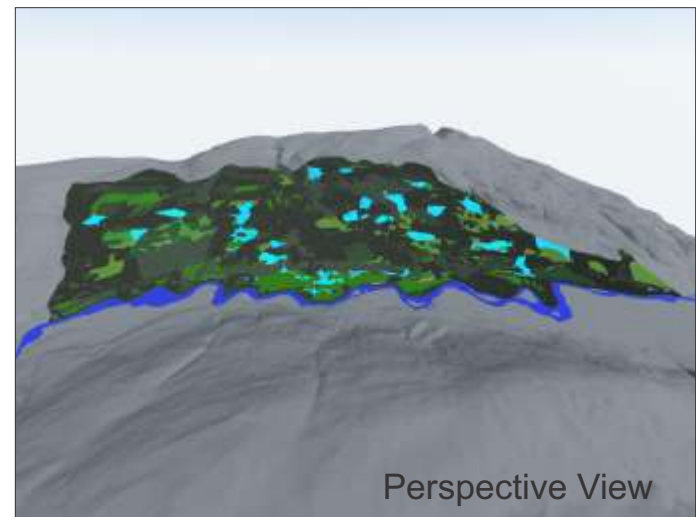
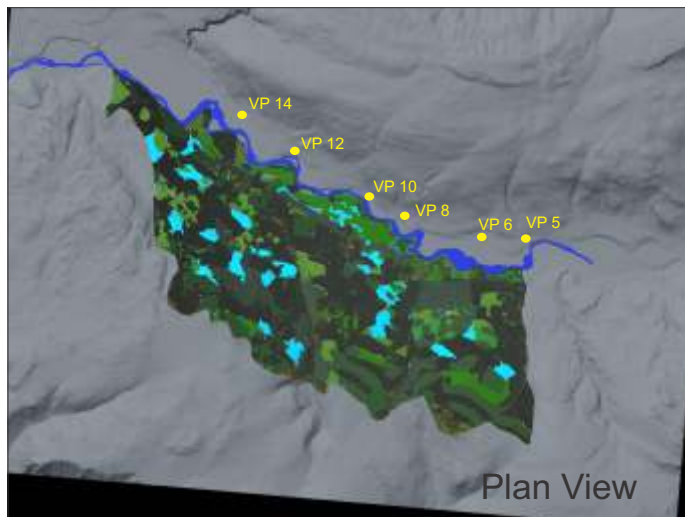
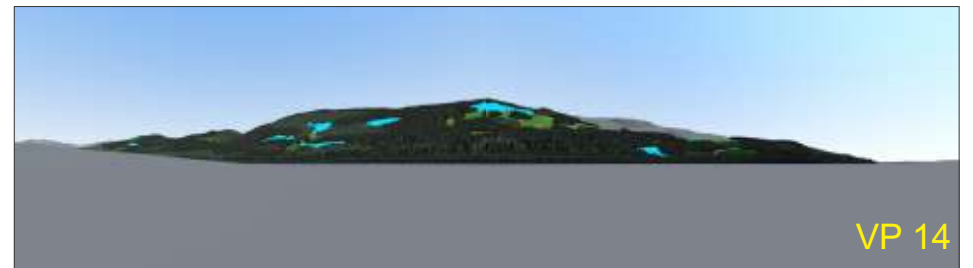
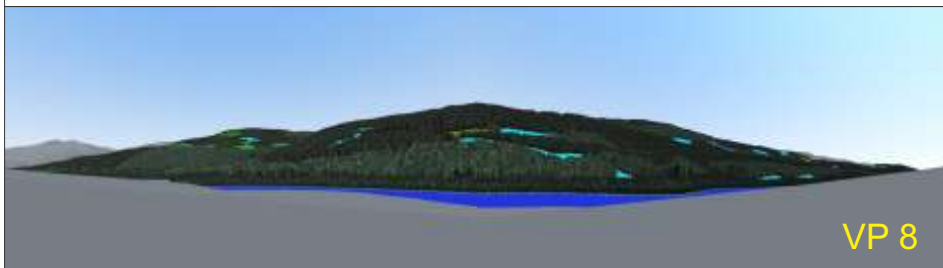
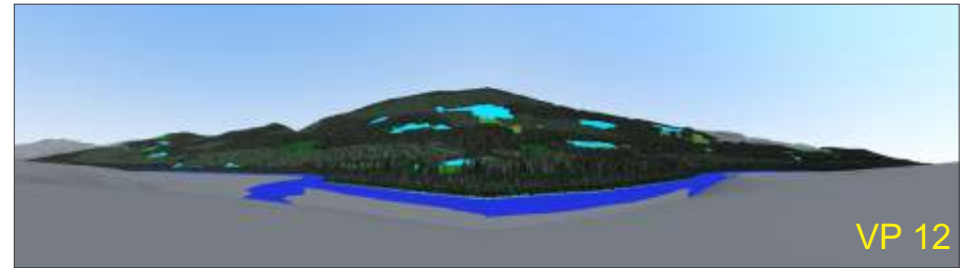
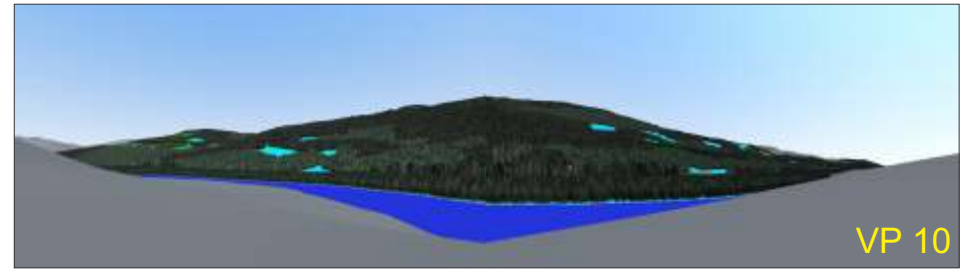
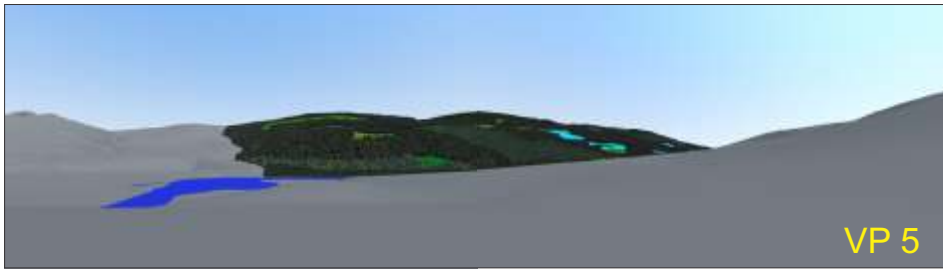
- Legend**
- 1204Carbure
 - PPHarm
 - VDU_OUT
 - BCTS_Exp_Areas
 - PowerRoad
 - CURRENT_OPER
 - nat+fire values
 - DESIGN AREA**
 - 1 BCTS
 - 2 CANFOR
 - 3 BCTS
 - 4 W600 A
 - 5 BCTS
 - 6 W600 A
 - 7 BCTS
 - 8 BCTS
 - 9 BCTS
 - 10 BCTS
 - 11 W600 A
 - 12 BCTS
 - 13 BCTS
 - 14 BCTS
 - 15 W600 A
 - 16 W600 A
 - Settlement_areas
 - River
 - NOOSE_SDIAGG
 - RM2100_Area
 - YoungF3
 - VRBLX_VDOT
 - VOLUMSPARSE_F2
 - VRBLX
 - Low_VDI_150ftwide
 - RPER
 - VDUAGG_BCTS_block
 - VDUAGG_FTEH_BLK
 - VDUAGG_MapsOverl
 - VDUAGG_DDMA
 - hrrml_umbrella_VDU
 - ForestHabitat_VDU
 - Classified Lakes

Produced for
Kootenai BCTS
by
RDI Resource Design Inc
March 2018
1:20,000
N
W E
S

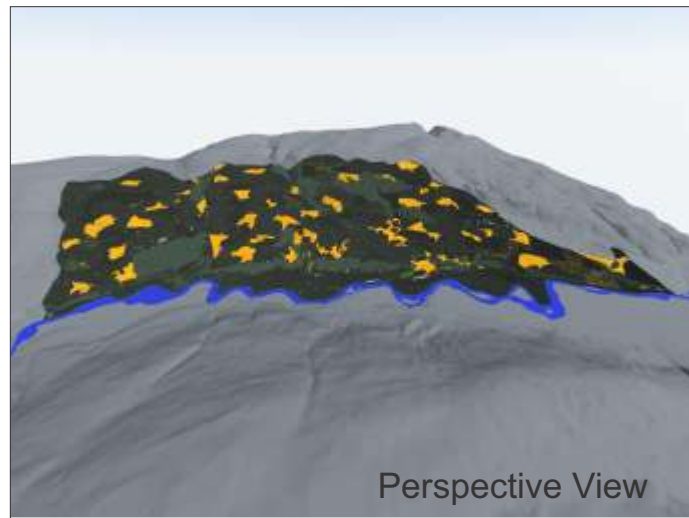
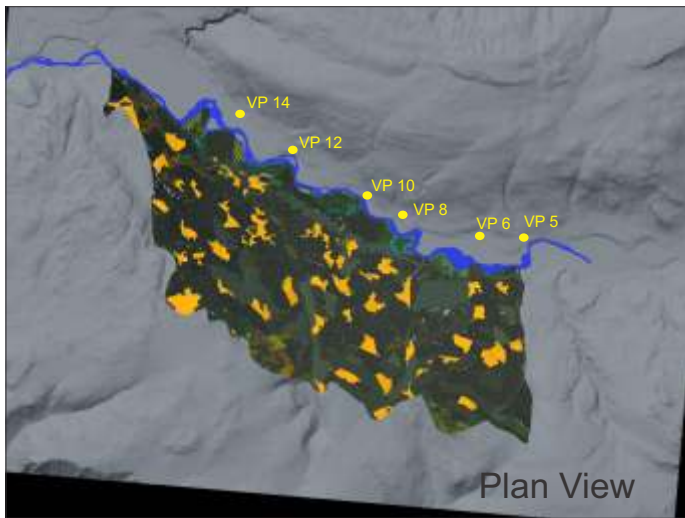
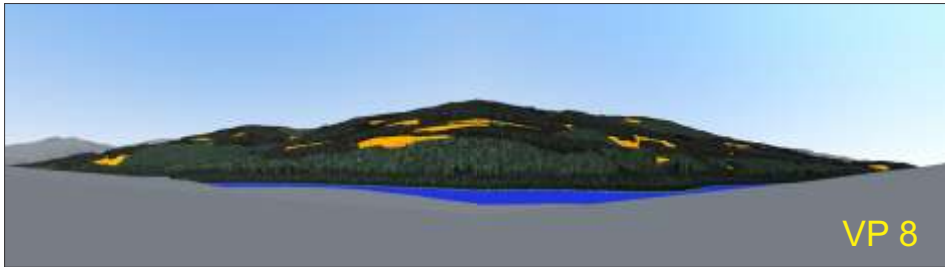
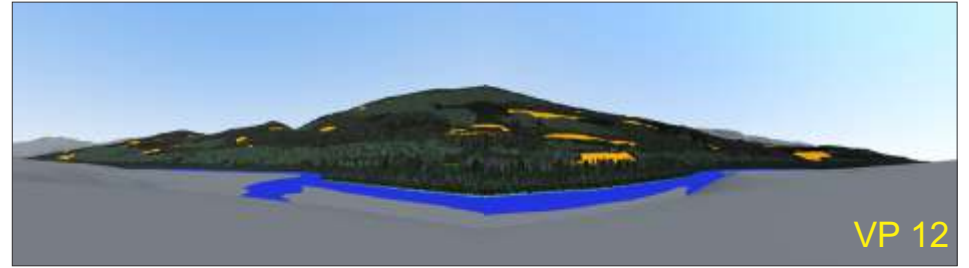
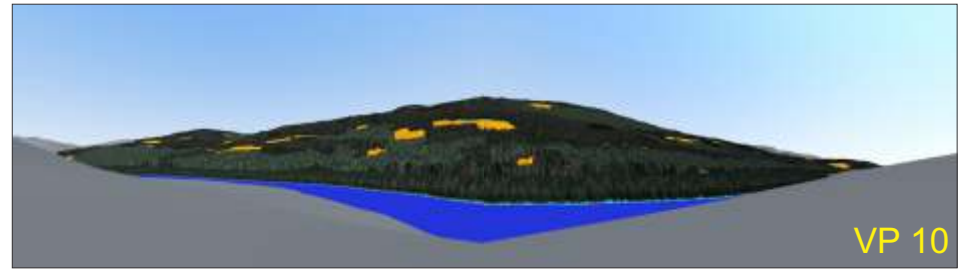
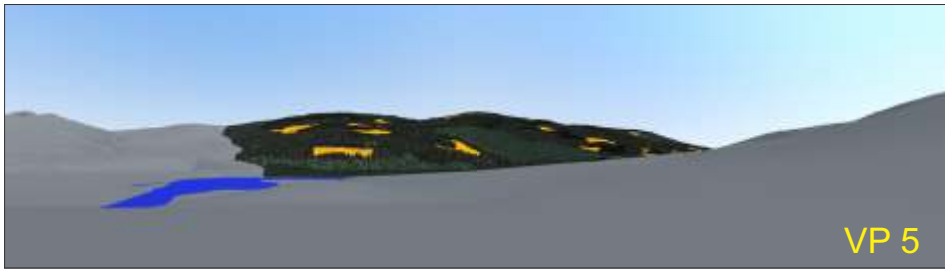
Foghorn IVD - Current Operable and Constraints



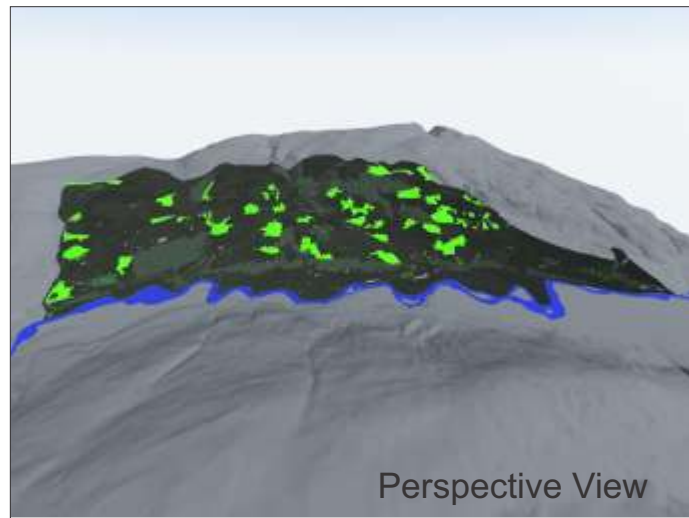
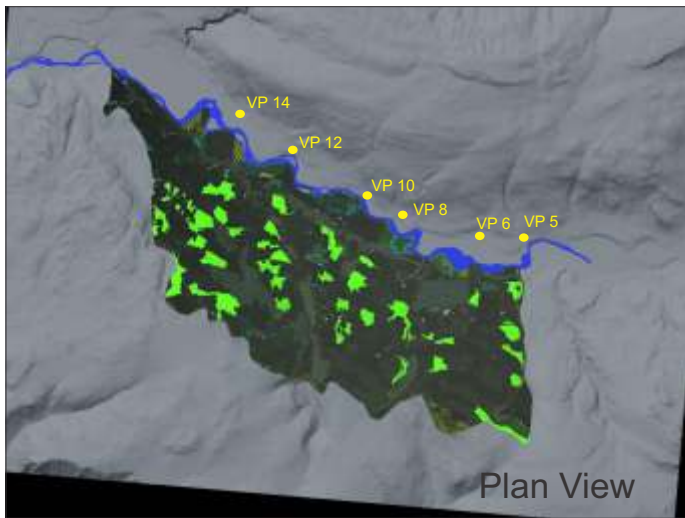
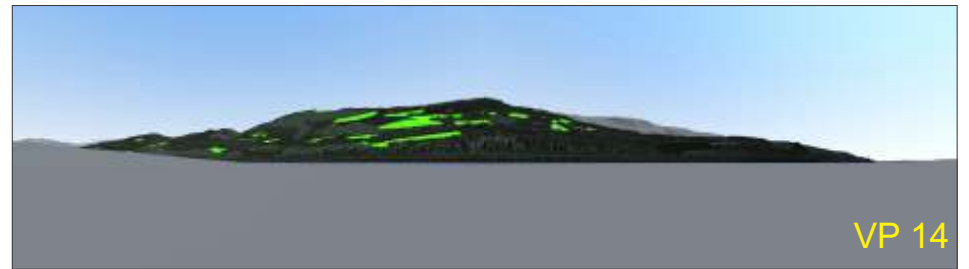
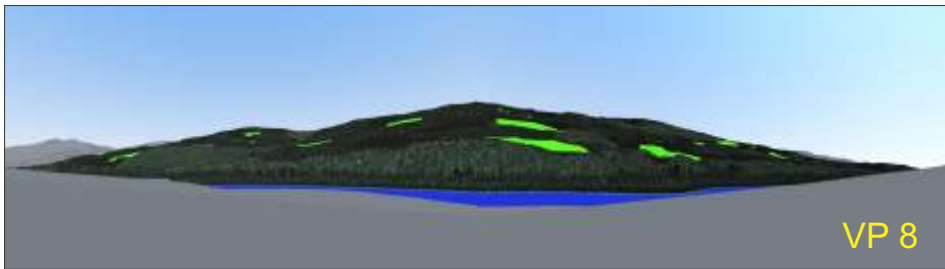
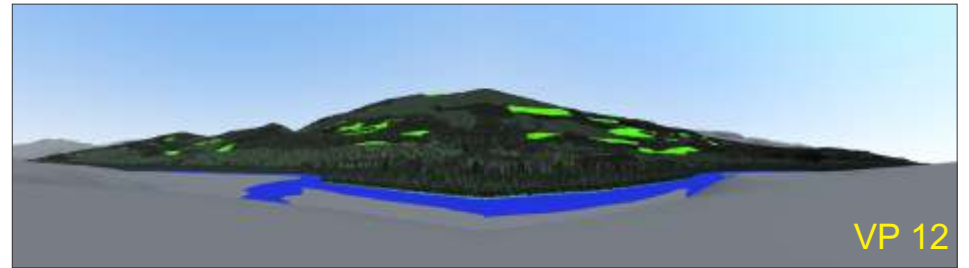
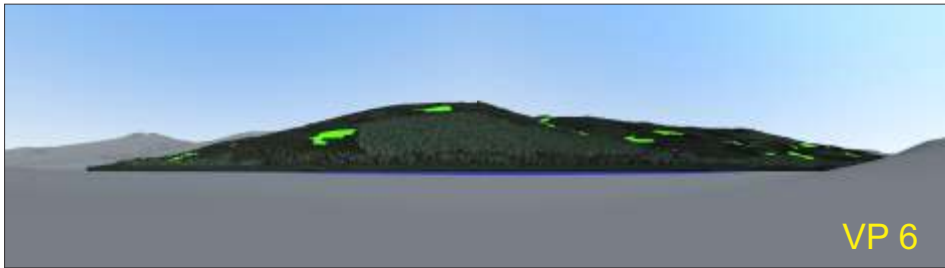
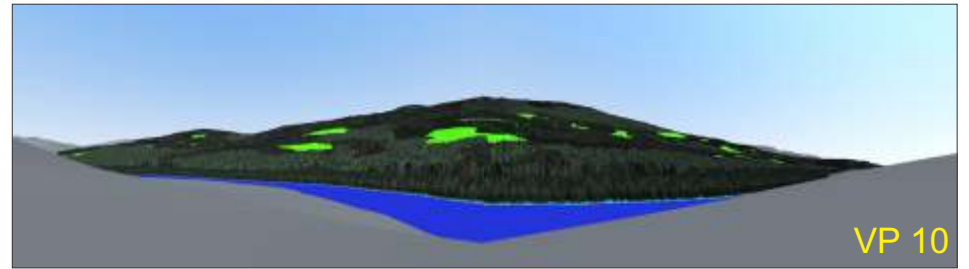
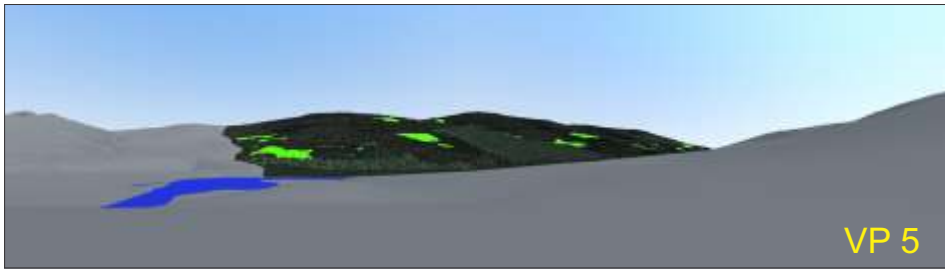
Foghorn IVD - Phases



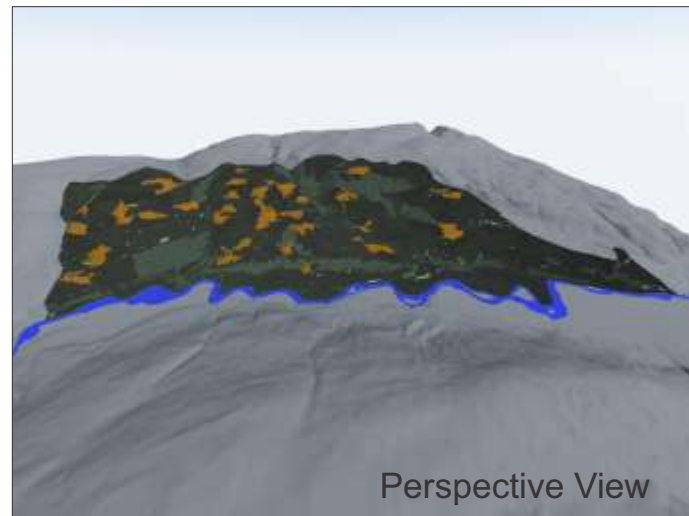
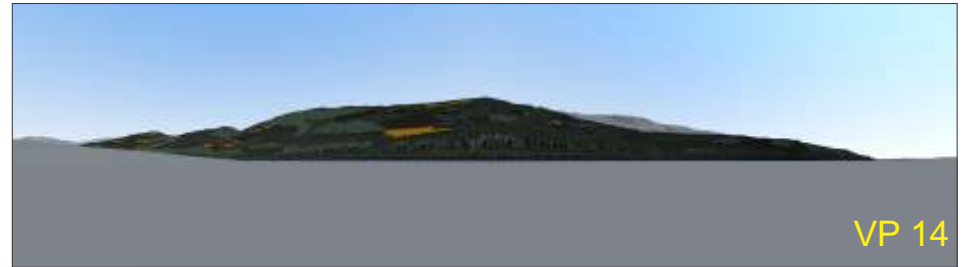
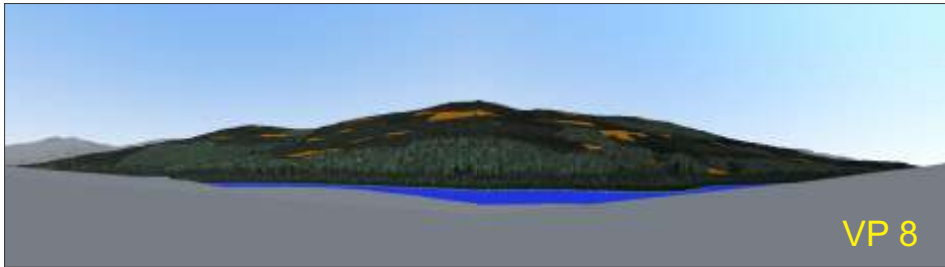
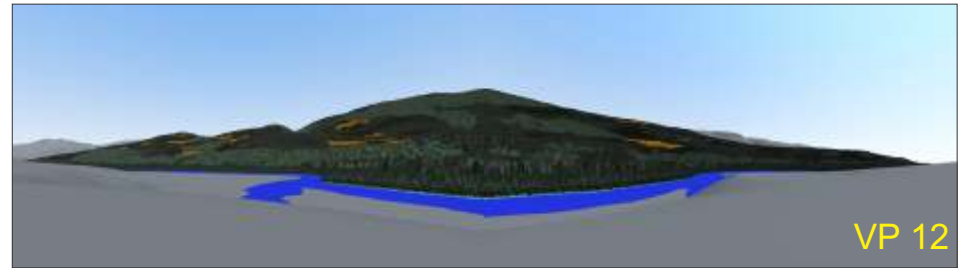
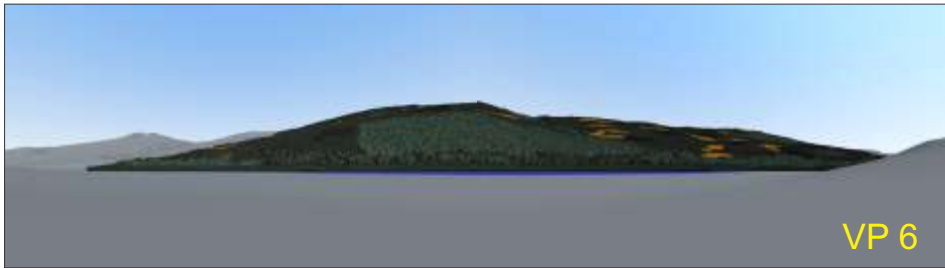
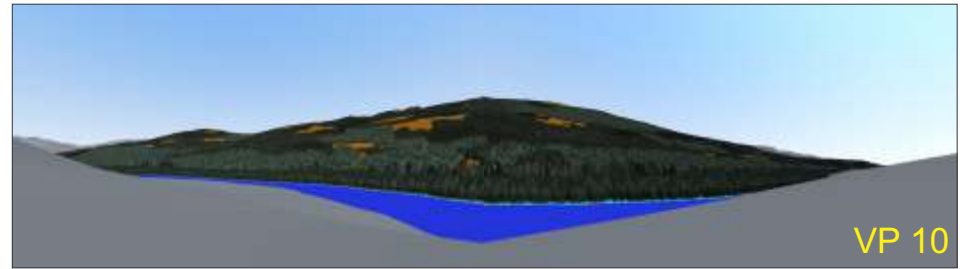
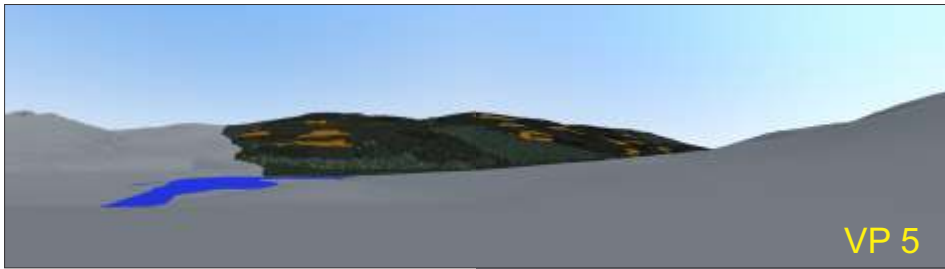
Foghorn IVD Phase 1



Foghorn IVD Phase 2



Foghorn IVD Phase 3



Foghorn IVD Phase 4