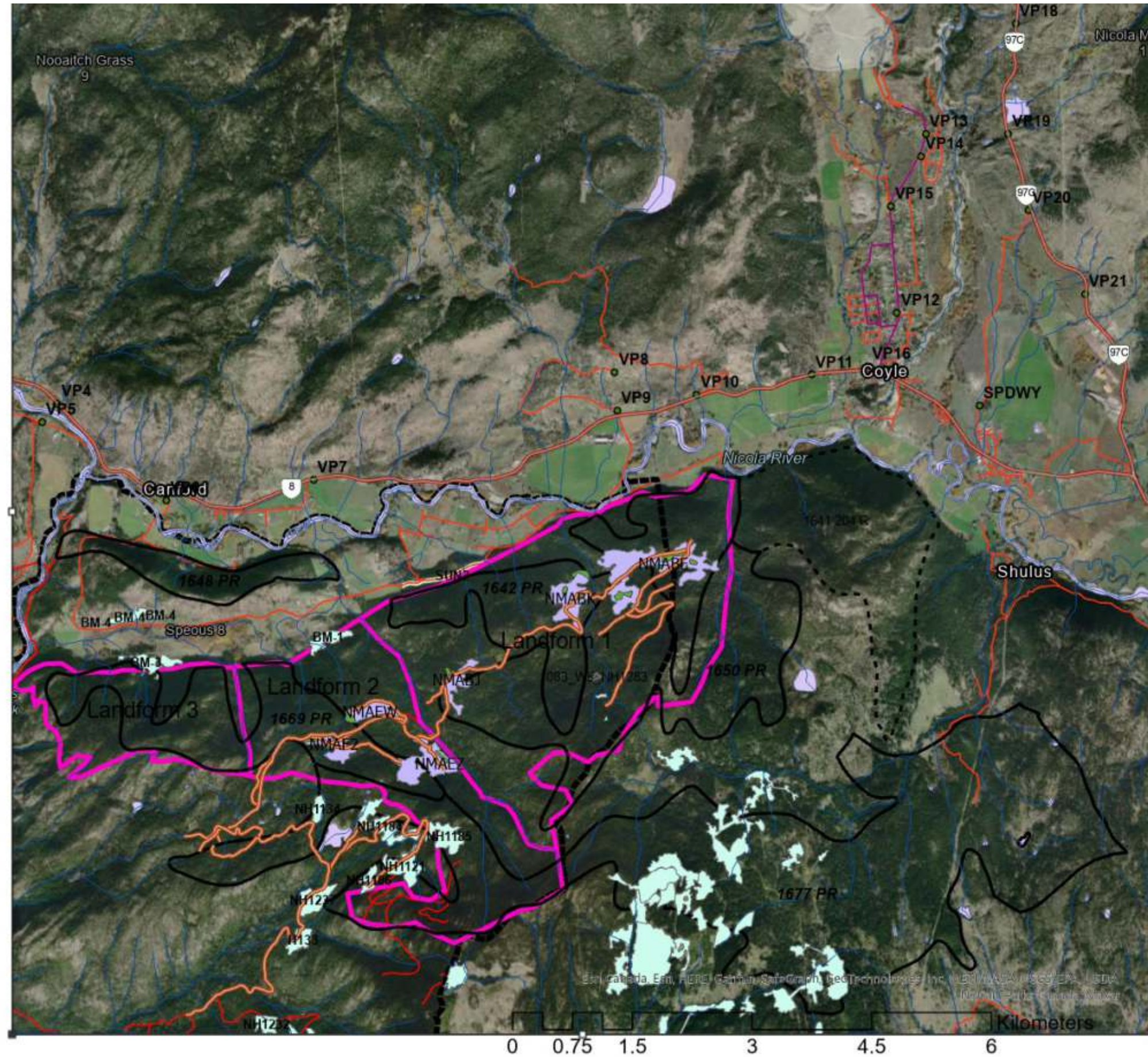
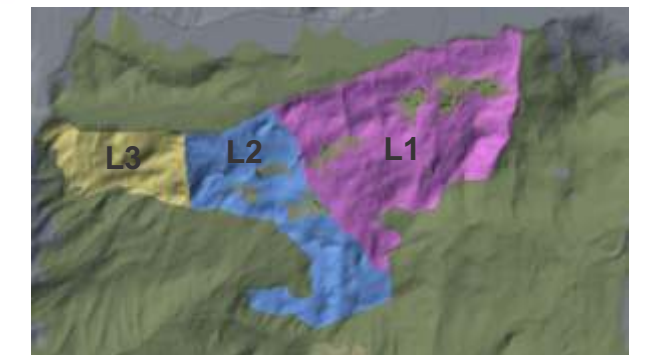


Preliminary Report



North Midday Visual Assessment RDI Resource Design Inc August 2023

- Viewpoints
- water_linear_flow_1
- watercourse_1
- ⋯ VLI_No_1641_R
- ▭ VLI_VIZ
- waterbody_2
- ▭ Landforms
- 309-CollectorRoute
- ⬜ North_Midday_Op_Area
- FTEN_Roads
- Proposed_Roads
- road_segment_1
- Highway
- Results_WTRA
- waterbody_2
- FTEN_Blocks
- Roads
- Proposed_blocks
- OldCCRES
- Proposed_WTRA
- OldCCRES



- VP 1. Pullout on Highway 8
- VP 2. At Recreation Site 2 Pictures
- VP 3. From Campsite
- VP 4. Highway
- VP 5. Pictures from Junction of Shackles Road and Petit Creek Road
- VP 6. Mailboxes on Sunshine Valley Road
- VP 7. Picture from Highway 8 Side View
- VP 8. Cul de Sac at Miller Estates
- VP 9. Pictures from Mailboxes at Bottom of Miller Estates
- VP 10. Junction of Highway 8 and Woodward Road TNRD
- VP 11. Leaving Lower Nich Pullout
- VP 12. Playground at Lower Nich
- VP 13. Junction of Yap Skim Road and Aberdeen
- VP 14. Junction of Saskatoon Ln and Aberdeen Road
- VP 15. Good View from Aberdeen Road
- VP 16. From Canco Gas Station Lower Nich
- VP 17. Highway 97c from Logan Lake
- VP 18. From Highway 97c
- VP 19. Highway 97c
- VP 20. Highway 97c @ Road Junction
- VP 21. Hw 97c

● Assessment Viewpoint

Landform 1 contains NMABE, NMABK, NMABJ (nvs)

Landform 2 contains NMAEZ, NMAEW, NMAF2

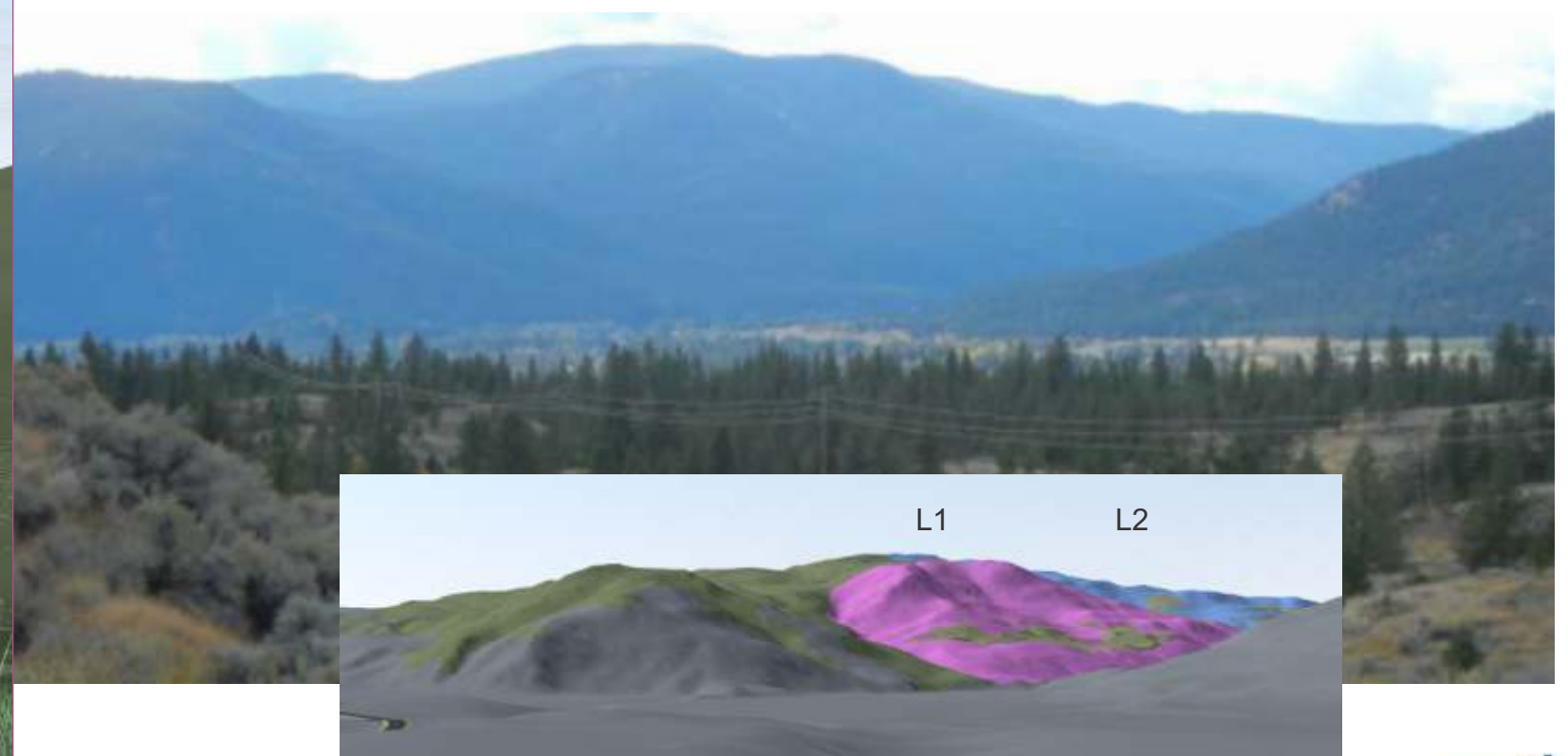
Detailed report to be completed pending receipt of layout changes, if any.

Viewpoint List



NMAEZ has rectangular appearance.
 Percent Alteration Calculations next Page

40 degree FOV;
 761m camera elv.



Viewpoint 18

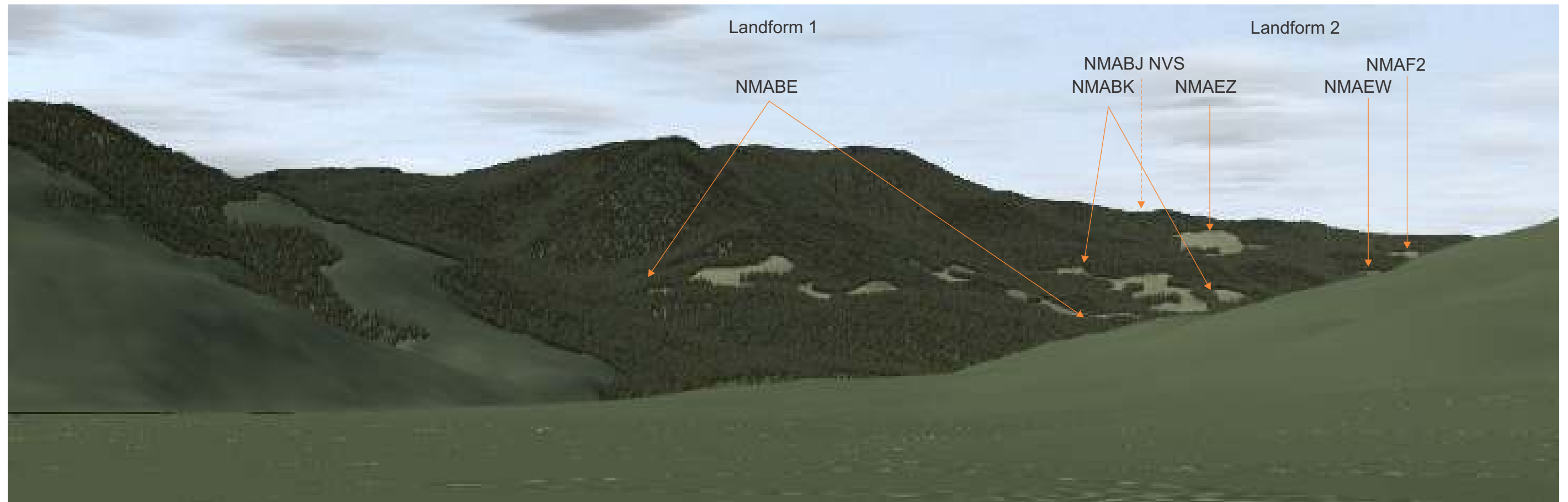


Percent Alteration North Midday 2023 from Viewpoint 18		
Name	AREA2	% Alt
Landform 1	689948.82	
NMABE	489.38	0.07%
NMABE	5111.71	0.74%
NMABE	1237.72	0.18%
NMABE	2083.01	0.30%
NMABE	1542.30	0.22%
NMABE	3673.48	0.53%
NMABK	9787.65	1.42%
NMABK	1474.99	0.21%
Sum Alt	25400.23	3.68%
Landform 2		
NMAEZ	7592.84	5.02%
NMAF2	3508.95	2.32%
NMAEW	2176.55	1.44%
Sum Alt	13278.34	8.78%
Landform 2a		
	10823.15	0.00%

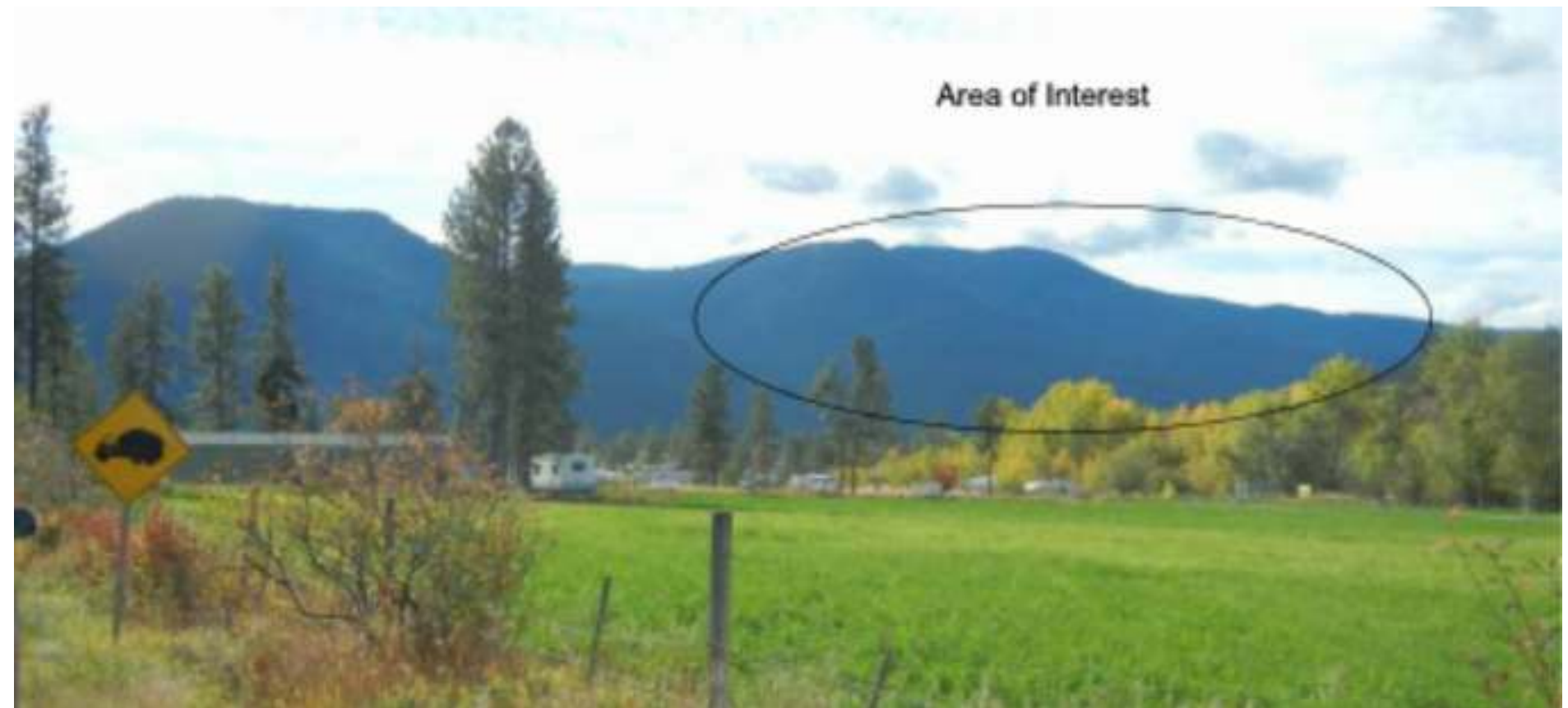
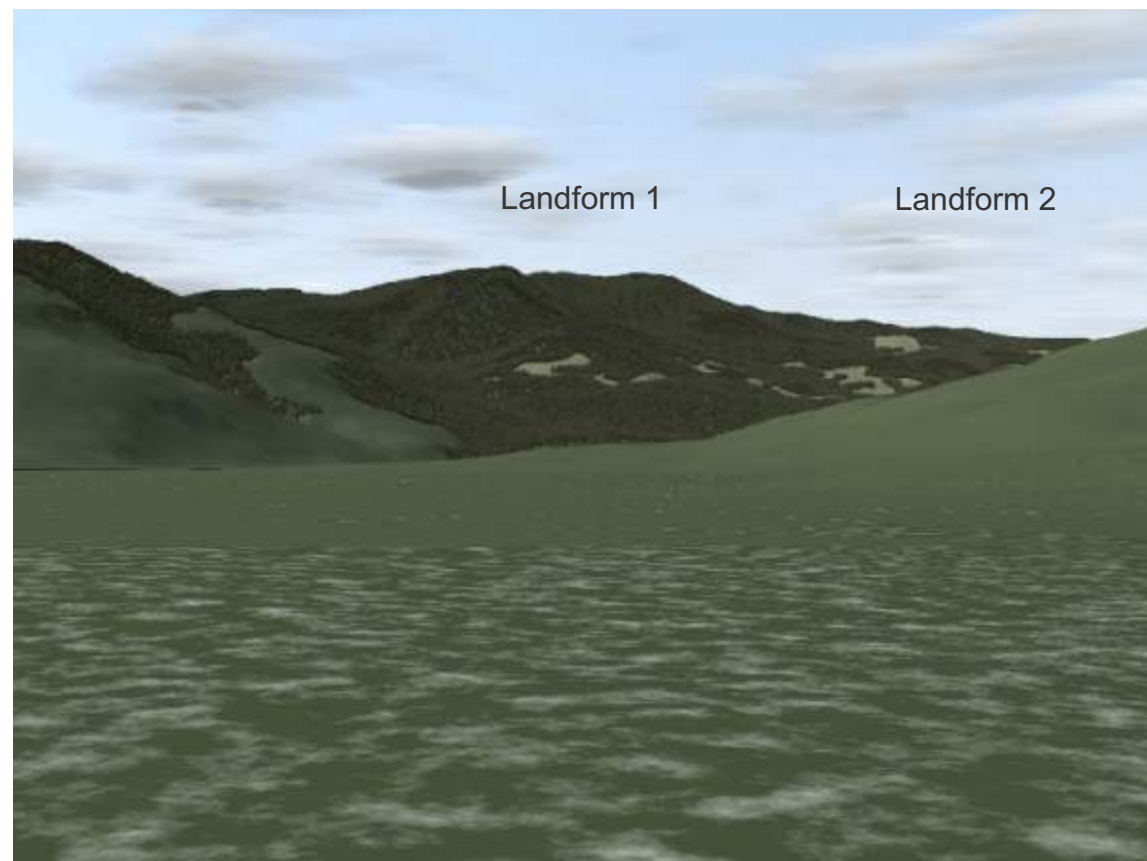
Landform 1 meets Partial Retention Visual Quality Class with high degree of variation and distribution.

Landform 2 exceeds Partial Retention Visual Quality Class, however, the landform is truncated by intervening topography from this view and therefore is not considered a legitimate measure from this viewpoint (see Viewpoint 8 for open measure). NMAEZ has rectangular appearance.

Viewpoint 18 Percent Alteration

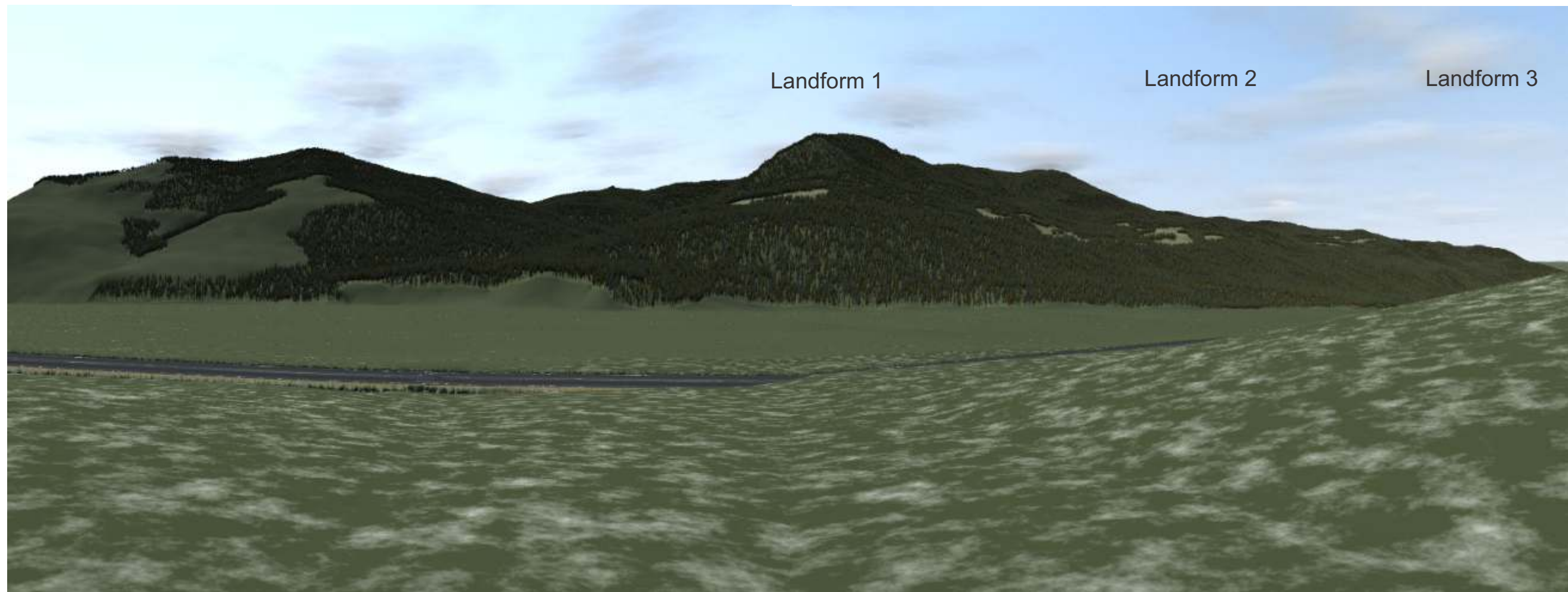


View similar to Viewpoint 18 with more truncation due to intervening topography - not valid for Percent Alteration Analysis - see viewpoint 18 and 8 for more open views of Landform 1.



40 degree FOV; 637m camera elv.

Viewpoint 15

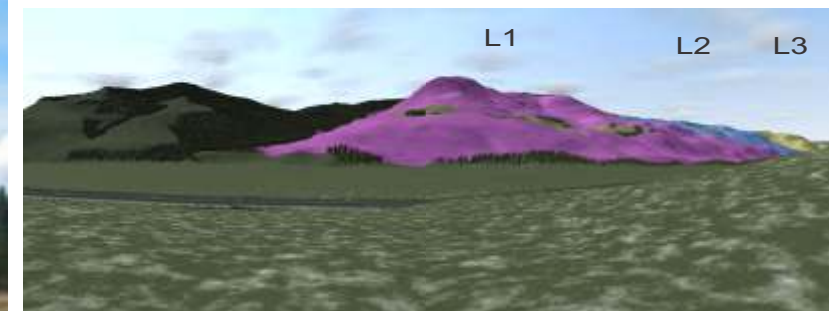


View similar to Viewpoint 8 with no truncation due to intervening topography - much less visual apparency of cutblocks; good design.

60 degree FOV
579m camera elv.



Junction Highway 8 and Woodward Road - 579m camera elv.

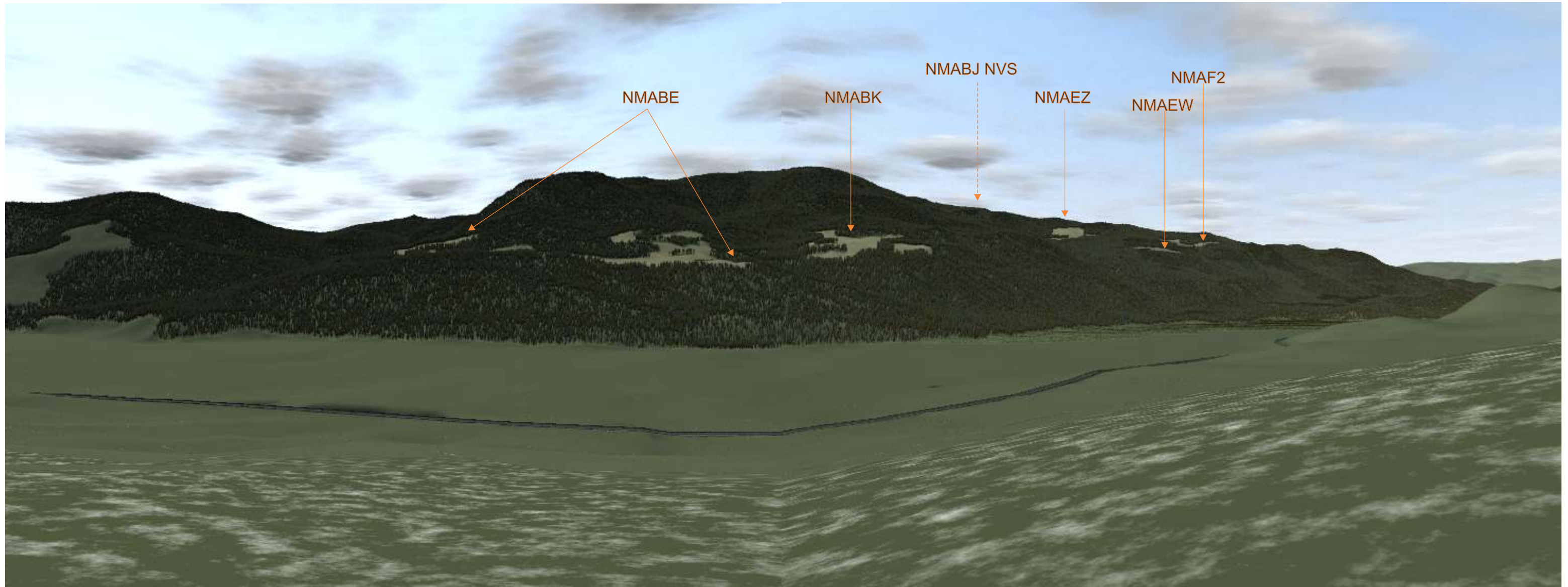


Viewpoint 10

Landform 1

Landform 2

Landform 3

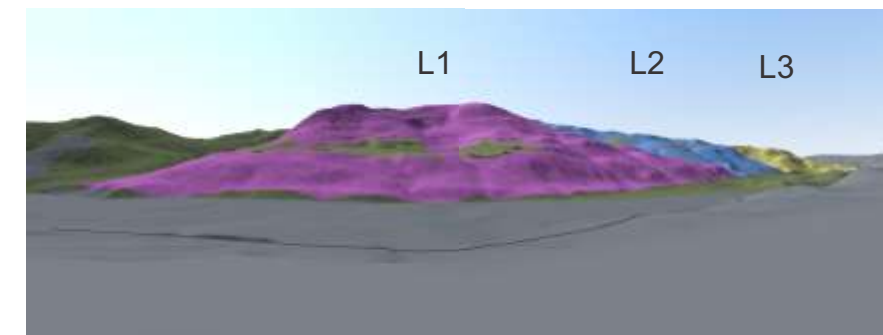


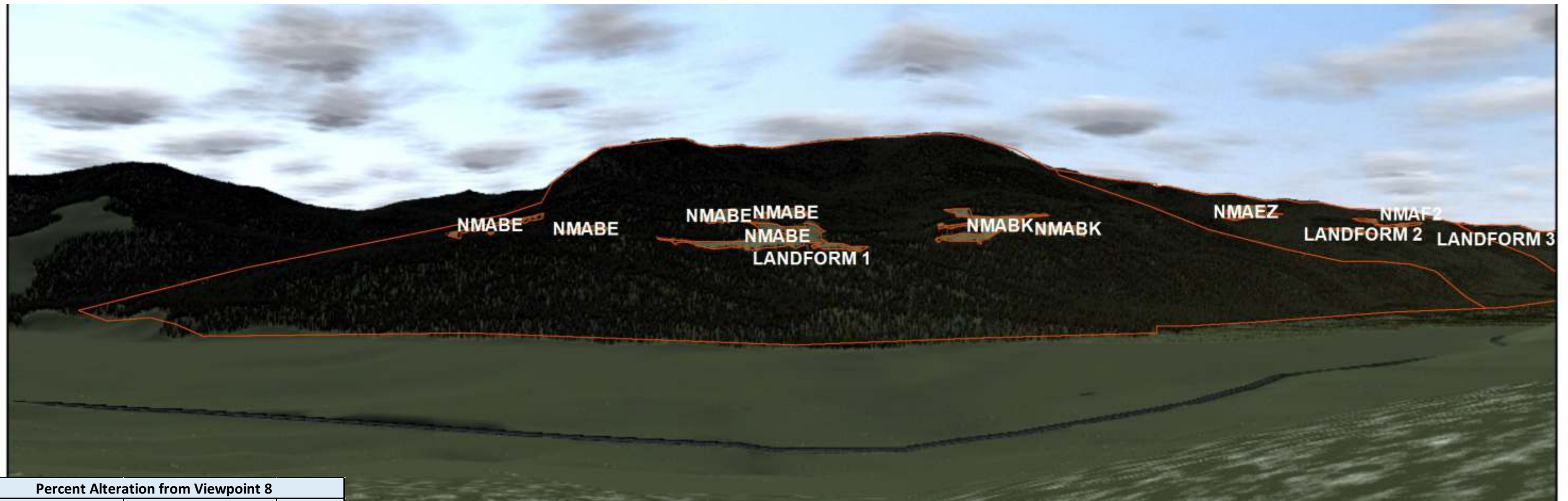
Percent Alteration Calculations presented on next page.

60 degree FOV
671m camera elv.



Viewpoint 8

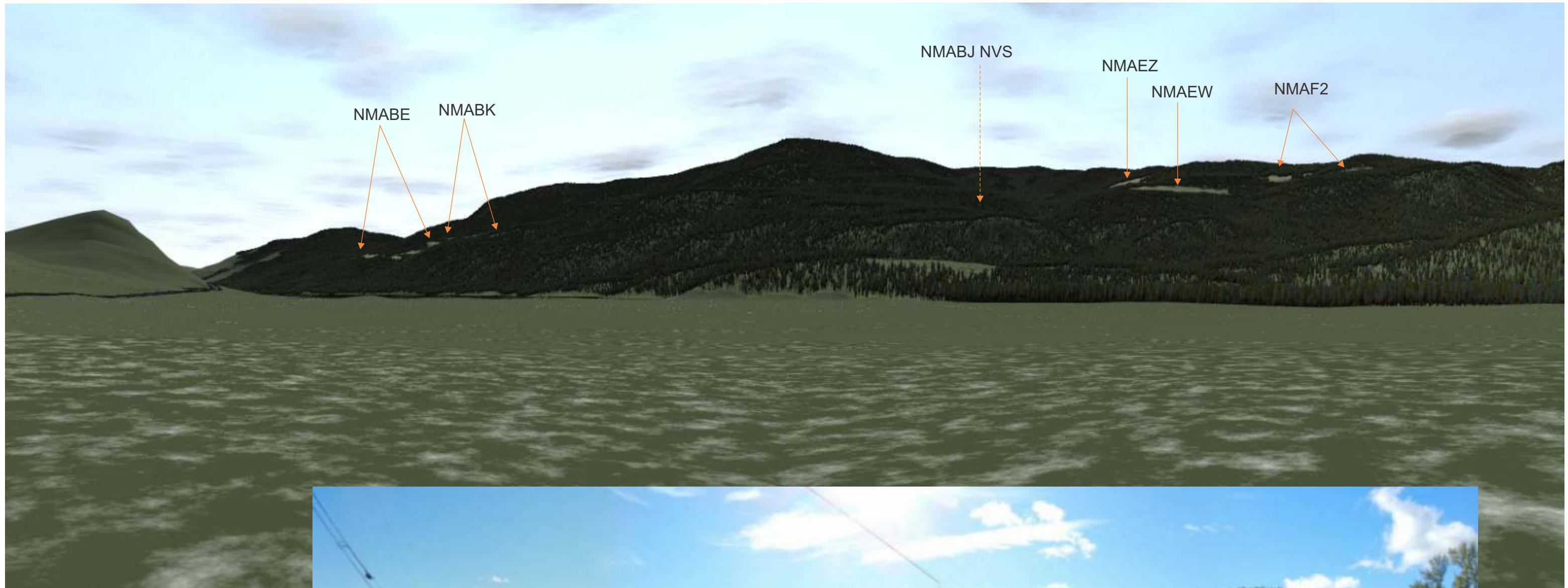




Percent Alteration from Viewpoint 8		
Name	AREA2	% Alt
LANDFORM 1	1161194.40	
NMABE	2315.80	0.20%
NMABE	54.07	0.00%
NMABE	1146.26	0.10%
NMABE	1789.68	0.15%
NMABE	1985.23	0.17%
NMABE	14253.45	1.23%
NMABE-MINUS	1198.95	0.10%
NMABK	8210.35	0.71%
NMABK	1723.89	0.15%
Sum Alt L1	32677.68	2.81%
LANDFORM 2	147068.90	
NMAEZ	2696.23	1.83%
NMAF2	1176.00	0.80%
NMAEW	611.88	0.42%
Sum Alt L2	4484.11	3.05%
LANDFORM 3	55299.05	0.00%

Both Landform 1 and Landform 2 meet mid-range Partial Retention Visual Quality Class with good design and high degree of variation and distribution.

Viewpoint 8 Percent Alteration



60 degree FOV; 546m camera elv.



View presents only minor glimpses of the cutblocks - not a valid Percent Alteration viewpoint. - See Viewpoints 18 and 8. for more open views.

Viewpoint 7