



Visual Landscape Inventory Map

Clearwater, BC

Visual Impact Assessment of BCTS Blocks BRO385-1, BRO385-2, and BRO242
Conducted by RDI Resource Design Inc February 4, 2024

Contents

1	Key Maps
2	Contents; Report Summary
3	Dutch Lake Viewpoint Visual Simulation
4	Highway Traffic Circle Viewpoint Visual Simulation
5	Ski Hill Viewpoint Visual Simulations - summer and winter
6	Ski Hill Viewpoint Percent Alteration Calculations

Summary Report

On January 23, 2024, RDI was requested by Bradley White, BCTS Kamloops Business Area, to conduct a Visual Impact Assessment of three cutblocks in the Clearwater area. One of the blocks, BRO385-1, will be partially located in Visual Sensitivity Unit 971 which has an established Visual Quality Objective of Partial Retention. The upper portion of that block sits in a non-visually sensitive polygon numbered 1160 in the Visual Landscape Inventory. The other two cutblocks would also be located in the NVS polygon. The VLI map polygons are shown on the map insert on page 1, and in perspective view from the Ski Hill opposite.

RDI conducted a search of potential viewpoints with Google Earth and then with Visual Nature Studio, and determined that there were two likely viewpoints, at minimum. The first was at the traffic circle at the junction of Highway 5 and the Clearwater Valley road; the second was on Dutch Lake, both providing open viewing. Both viewpoints are in distant middle-ground, the Circle viewpoint being 6.9km from the centre of BRO385-1, and the Lake viewpoint being 6.4km from that block. A search along Clearwater Valley Road resulted in no candidate viewing opportunities, but local knowledge may indicate additional viewpoints. Brad suggested the Ski Hill for elevated, distant viewing (9250m). This viewpoint was added, showing summer and winter conditions (snow on ground).

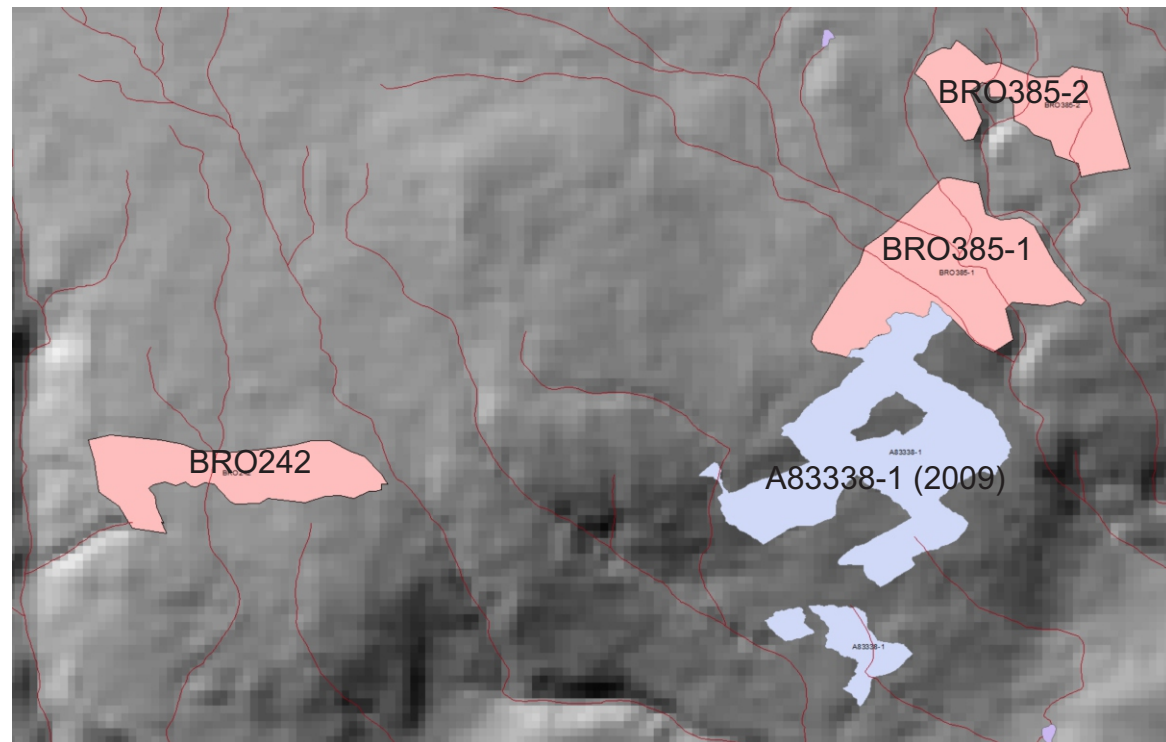
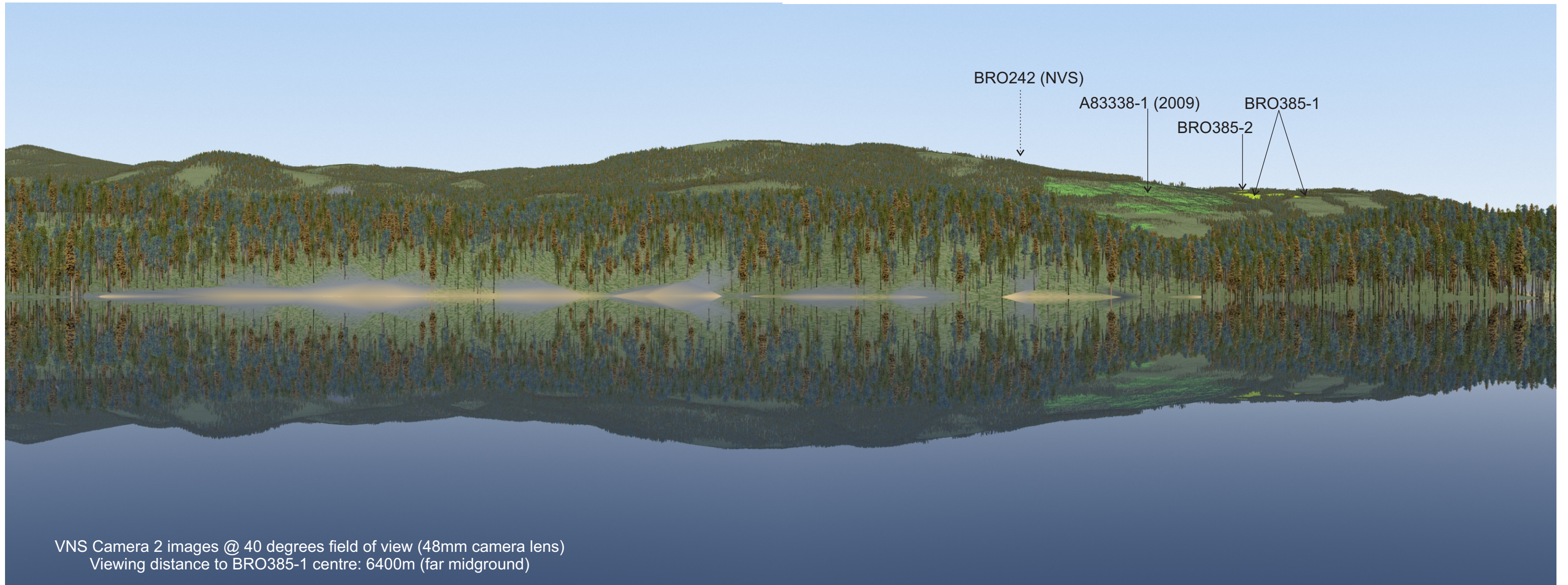
The viewpoints were rendered using Visual Nature Studio to indicate block visibility in perspective view. The existing alteration A83338-1, logged in 2009, was also rendered with low regeneration representing visually effective green-up. The old cutblock also was present in the Vegetation Resources Inventory.

BRO385-1 will be seen from each viewpoint as a minor opening sitting above the existing green-up. BRO385-2 also will be revealed, though of very minor consequence. Glimpses of BRO242 will be seen from the Ski Hill only. Overall, block apparency will be very subordinate in the far midground from the first two viewpoints, and in the background from the Ski Hill, on a long, fairly uniform landform identified as VSU 971 in the Visual Landscape Inventory with high Visual Absorption Capability presently due to the history of forest alteration.

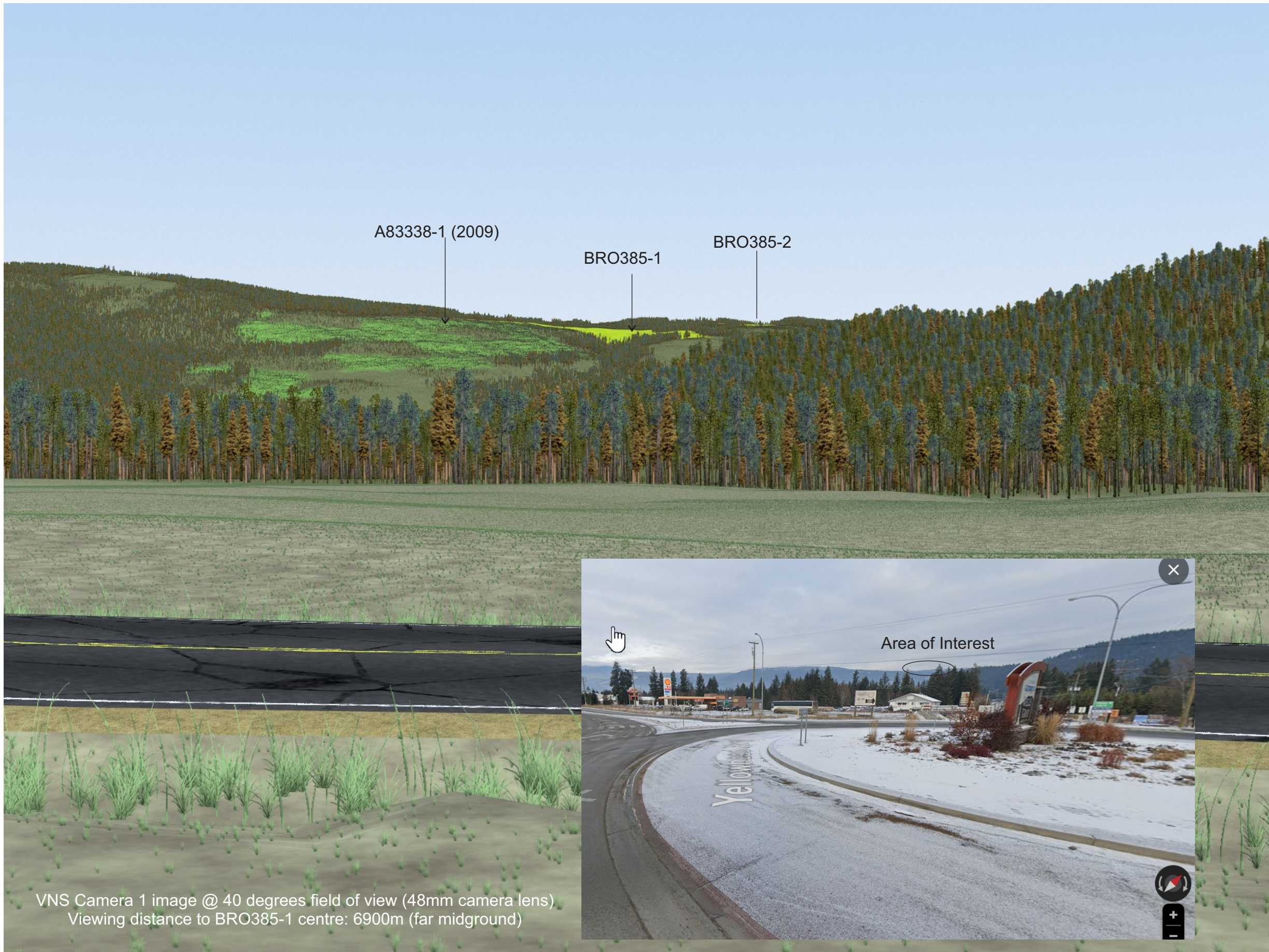
Given the minor scale, good conformity of shape, high VAC, and viewing distances, percent alteration calculation was calculated only from the Ski Hill viewpoint. The result of 1.59% within VSU 971 is presented in detail on page 6. The Partial Retention VQO continues to be maintained.



Kenneth B. Fairhurst, PhD, RPF
RDI Resource Design Inc
February 4, 2024



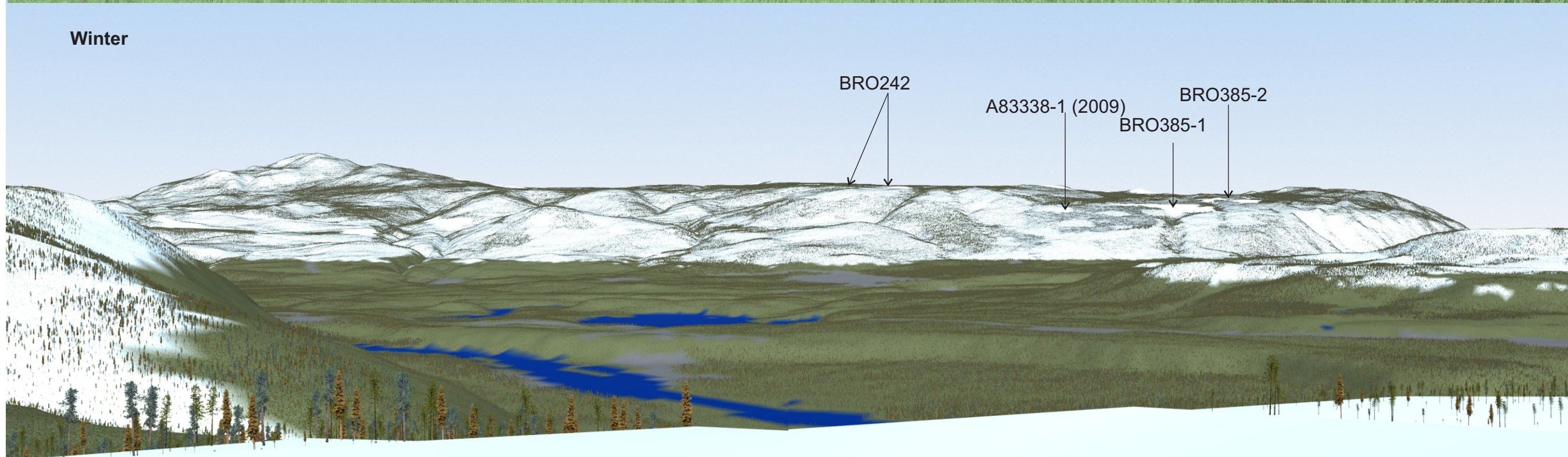
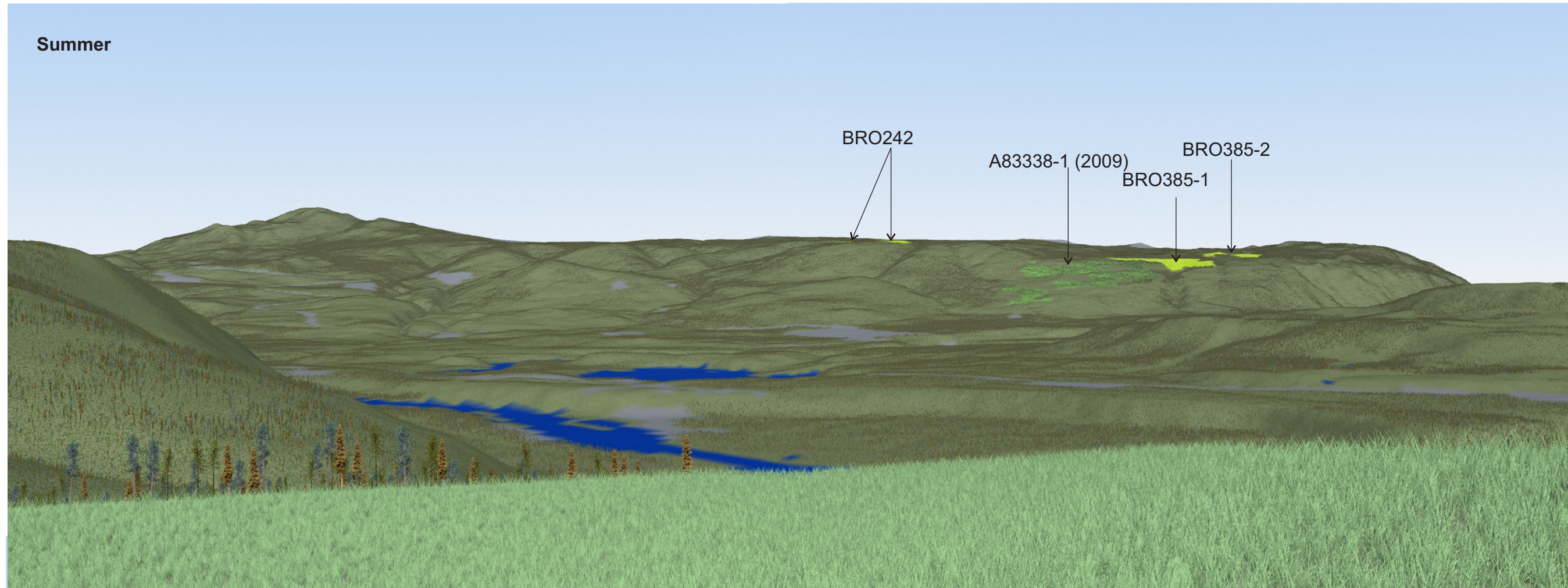
Dutch Lake Viewpoint



VNS Camera 1 image @ 40 degrees field of view (48mm camera lens)
Viewing distance to BRO385-1 centre: 6900m (far midground)

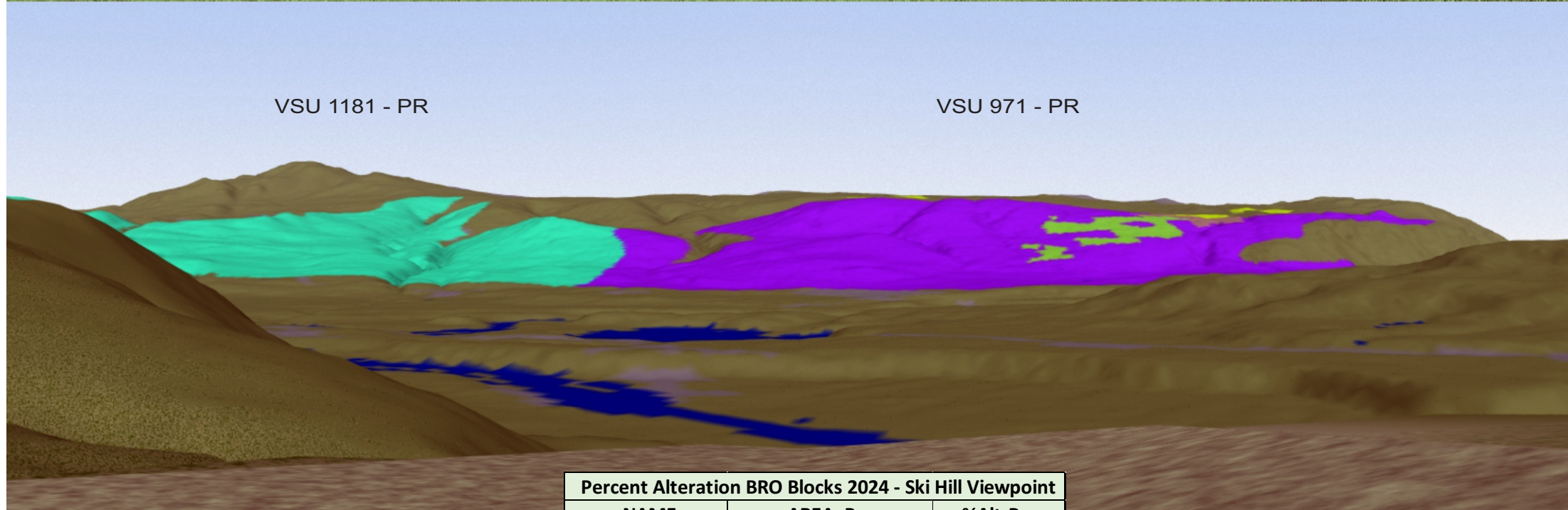
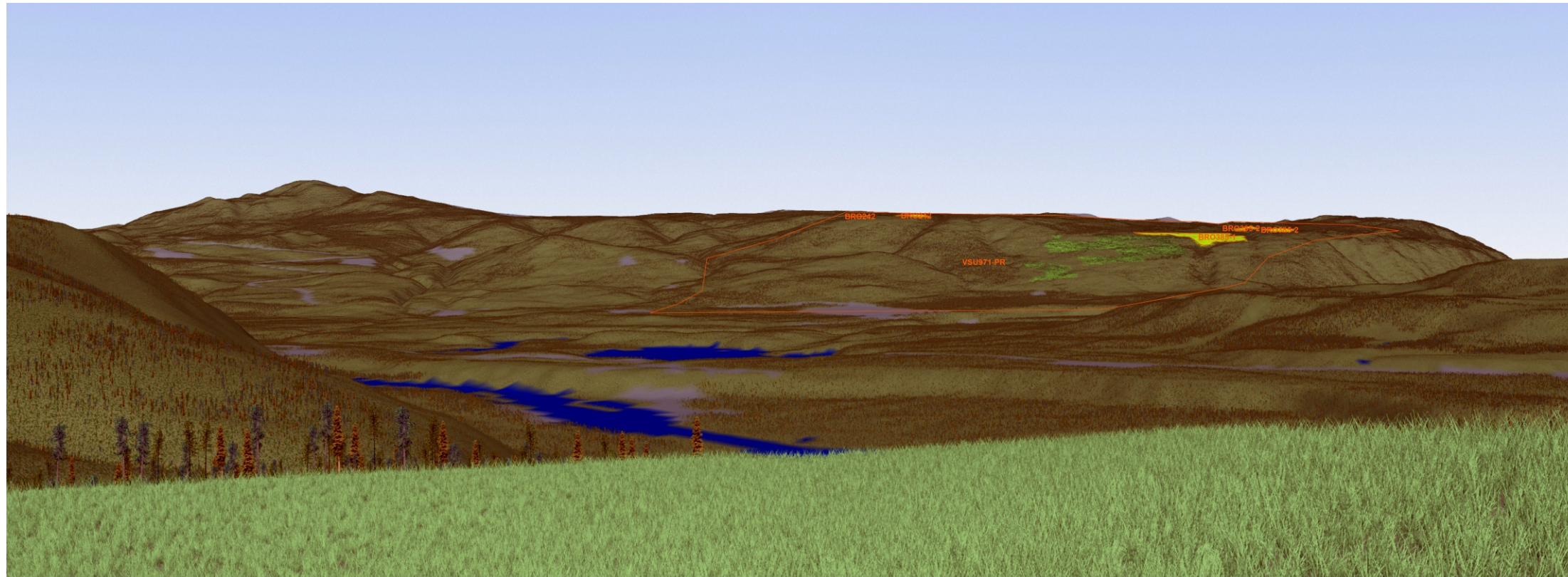
Traffic Circle Viewpoint

See also VQO map and Percent Alteration calculations in perspective view from Ski Hill on page 6.



VNS Camera 2 images @ 40 degrees field of view (48mm camera lens)
Viewing distance to BRO385-1 centre: 9250m (background)

Ski Hill Viewpoint



Percent Alteration BRO Blocks 2024 - Ski Hill Viewpoint		
NAME	AREA_Pers	%Alt-Pers
VSU971-PR	331077.57	
BRO385-1	3841.12	1.16%
BRO385-2	359.94	0.11%
BRO385-2	544.08	0.16%
BRO242	141.55	0.04%
BRO242	362.70	0.11%
Sum Alt	5249.39	1.59%

Ski Hill Percent Alteration of VSU 971-PR