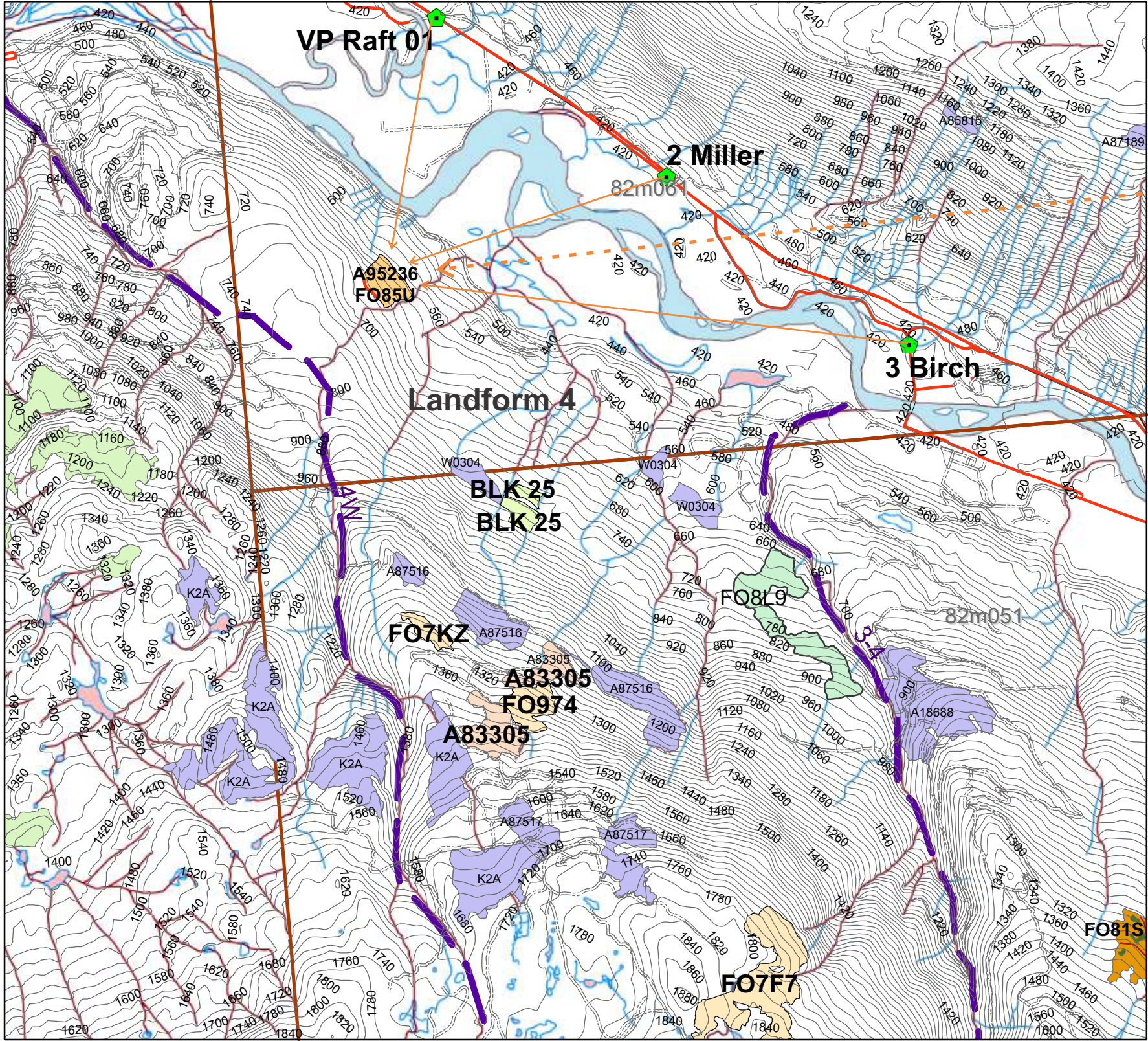
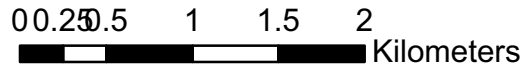


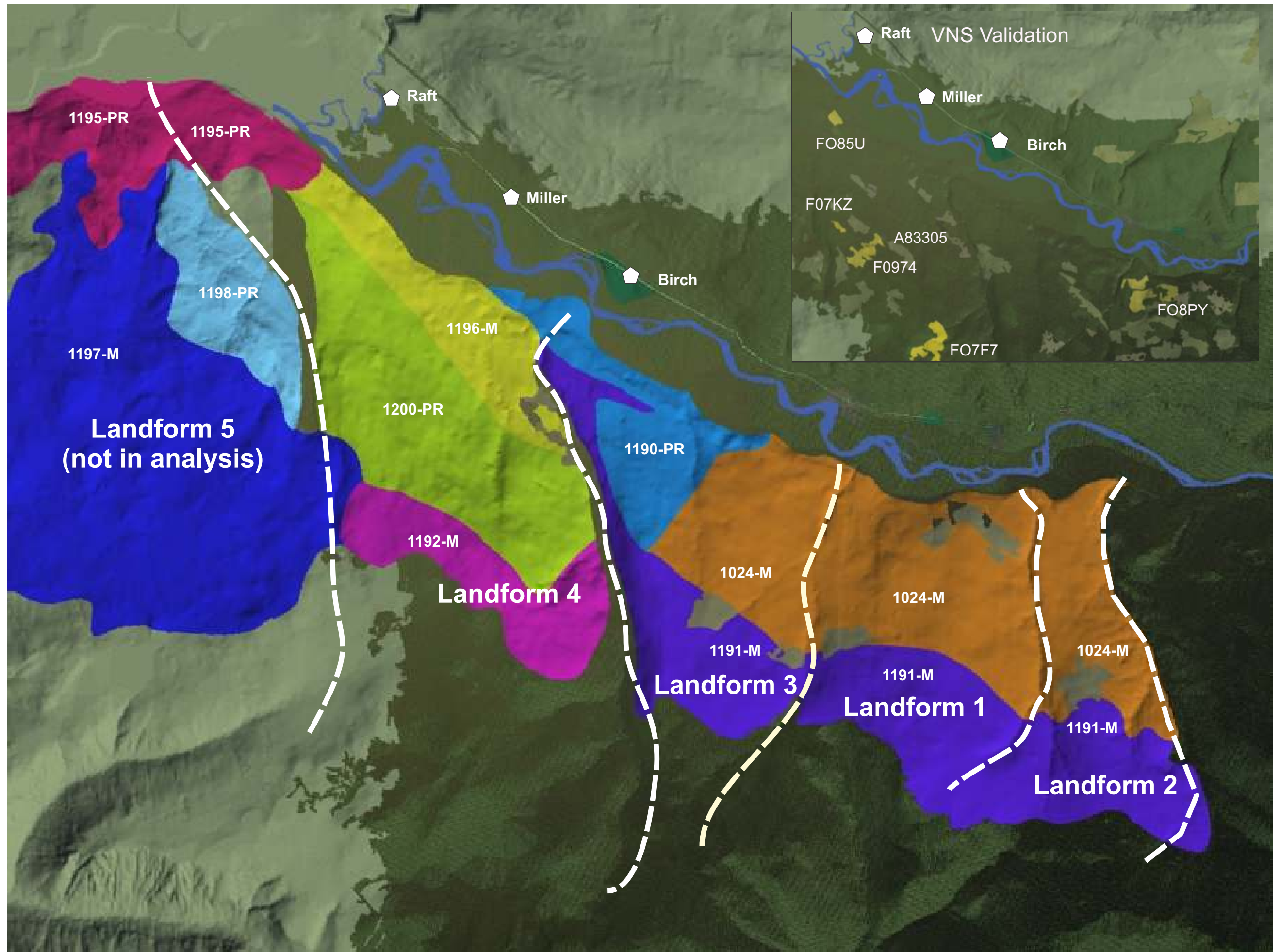
**BCTS Foghorn 2017 Visual Assessment**  
 Updated February 21, 2018 for A95236\_FO85U  
 prepared by  
**RDI Resource Design Inc**  
 November 4, 2017 to February 21, 2018



- A95236\_FO85U\_Road
- FO81S\_blk\_Mar\_15\_2016
- FO81J\_BLOCK\_BOUNDARY
- A95236\_FO85U Amended
- FO974
- B\_n\_A83305-1
- FO7KZ-17
- FO81R-17
- FO8PY-17
- New\_FO7F7\_Oct\_17\_2017
- FO81K\_BLOCK\_BOUNDARY
- Contours\_Clip
- FO81S\_RD\_Mar\_15\_2016
- ◆ Viewpoints
- FO81G\_WTRAS
- A92773\_KDC\_reserves\_Jan\_7-2015
- FO81J\_WTRA
- FO81S\_WTRA
- FO81K\_WTRA
- A92773\_wtra
- FO7EM\_H2014
- FO7EL-H2014
- Landform\_Lines
- A92773\_blk\_boundaries\_Jan7-2015
- Woodlot\_new\_blk\_for\_Ken
- 2008-2015completeclip
- Ften2008-2015completed
- FO8L9 Block shape
- MapGrid
- Highway5
- Harvested\_blks\_08-09
- CFP-2012-A18688
- N-Thompson



See Foghorn2017-RDI-171221 for Full Analysis prior to this 180221 FO85U Amendment



VNS Simulation of Landforms and Visual Sensitivity Units

# Contents

1	Key Map
2	VNS Key Map
3	Contents
4	Summary
5	Birch VNS Simulations and Photos
6	Birch Percent Alteration with Assessment
7	Miller VNS Simulations, Photos, and VSU-LOF
8	Miller Percent Alteration with Assessment
9	Raft VNS Simulations, Photos, and VSU-LOF
10	Raft Percent Alteration with Assessment
11	Additional Raft Photo

Foghorn Visibility Summary - 2018				
Landform 4 Partial Retention				
Viewpoint	FO7F7	A83305-1 FO974	FO7KZ	FO85U
Birch	NVS	V	V - sliver	V
Miller	NVS	V	V - sliver	V
Raft	NVS	V	V	V
Mapsheet				82M061
<b>Viewpoint Importance - Major - Highway 5 near Clearwater.</b>				
<b>VQO met from all 3 Viewpoints - See individual viewpoint Percent Alteration Sheets for full assessment</b>				
<b>See RDI 2017 report for full landform coverage</b>				

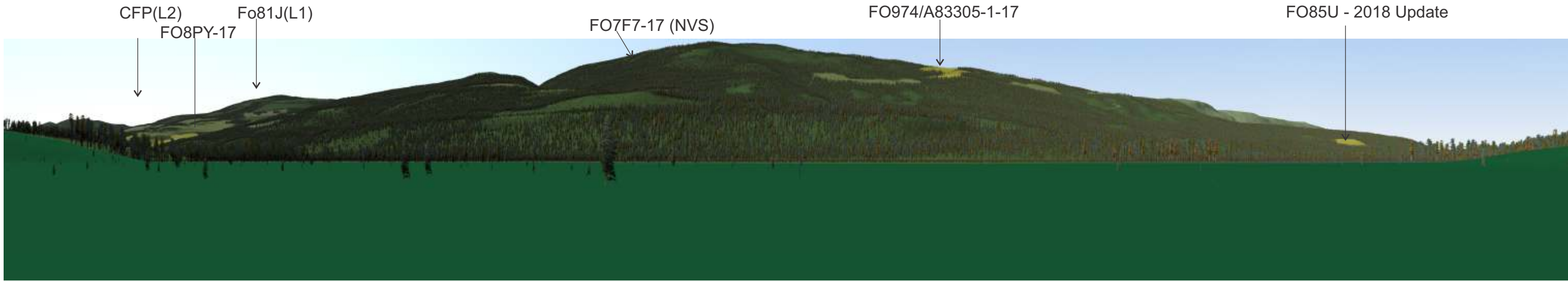
All viewpoint simulations with Visual Nature Studio.  
All viewpoint cameras set to 40° field of view, 48 mm lens.  
Individual images stitched together to form panoramas in VNS.

Prepared by:

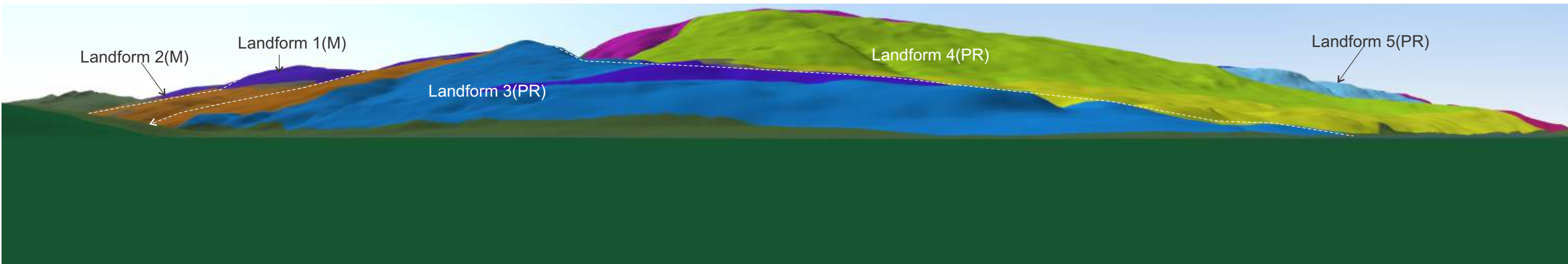


Ken B. Fairhurst, PhD, RPF  
RDI Resource Design Inc  
February 21, 2018

## Summary of Findings

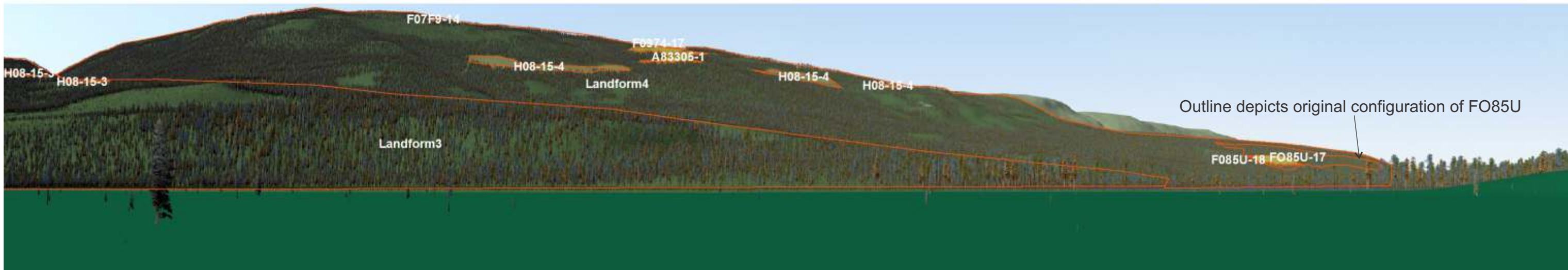
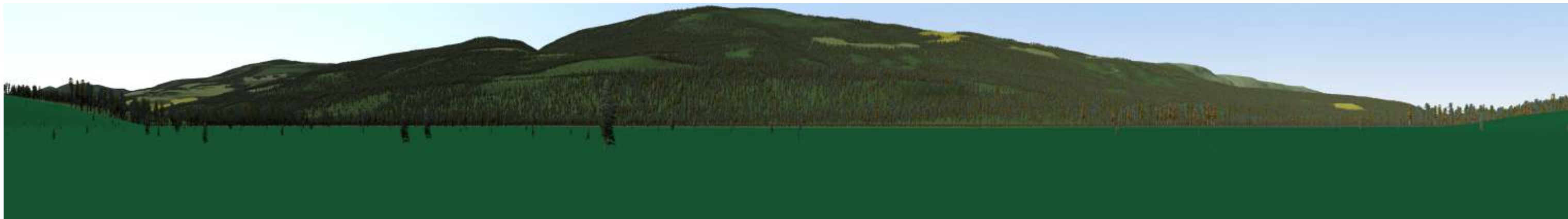


9327 pixel width



FO8L9 only in L4. See 2017 McCorvie and Sandbox for L1 blocks.

See 2017 Analysis of Sandbox and McCorvie for Percent Alteration of Landform 1



Percent Alteration - Birch Viewpoint - FO85U 2018		
Landform4 - PR	319644.23	
FO85U-18	1199.31	0.38%
A83305-1-17	1096.77	0.34%
F0974-17	974.34	0.30%
F07F9-14	71.59	0.02%
H08-15-4	3373.08	1.06%
H08-15-4	1593.45	0.50%
H08-15-4	194.31	0.06%
H08-15-4	1593.45	0.50%
H08-15-4	194.31	0.06%
Sum / %Alt	10290.61	3.22%

Landform 4 easily meets PR by Percent Alteration (3.22%) with greatly reduced scale of FO85U.

FO85U-2018 sits on the far right of the landform and is small in scale in itself, relative to the scale of the end piece of the landform, and exhibits conformity with the shape of the end of the landform and appears natural. The cutblock has been greatly reduced in scale from the original configuration, in response to RDI's 2017 findings and recommendations. When noticing some angularity in the small opening, KDC explained that the "block is designed to be harvested uphill with a tethered system which is why we have the straight-line boundaries. Internal reserves likely won't be feasible as the logger would not be able to reach any wood on the bottom side of them". RDI accepts that explanation, with its small size also working in its favour. The 2015 photo on the preceding page indicates the cutblock will likely be screened, though other views may expose the block.

Some or all of the regenerating openings harvested since 2008 and marked H08-15 may now be exhibiting Visually Effective Green-up (VEG). If so, total alteration could be reduced by up to 1.6%.

See also Miller and Raft viewpoints for Landform 4.

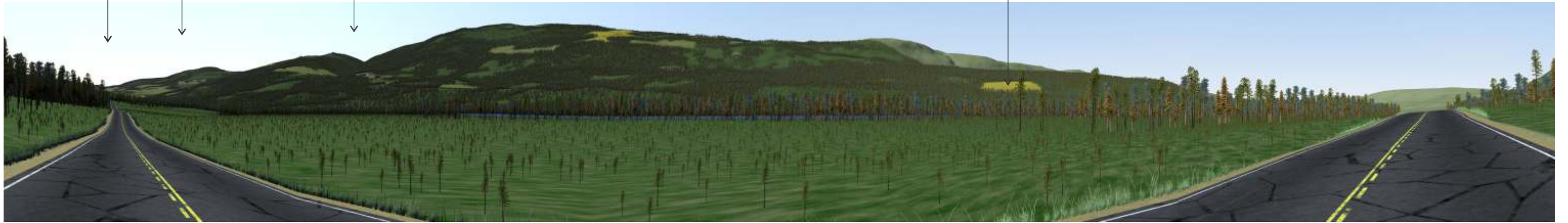
Landform 3 easily meets PR - see 2017 VIA.

CFP(L2)

FO81J(L1)

FO8L9(L4)

FO85U - 2018 Update



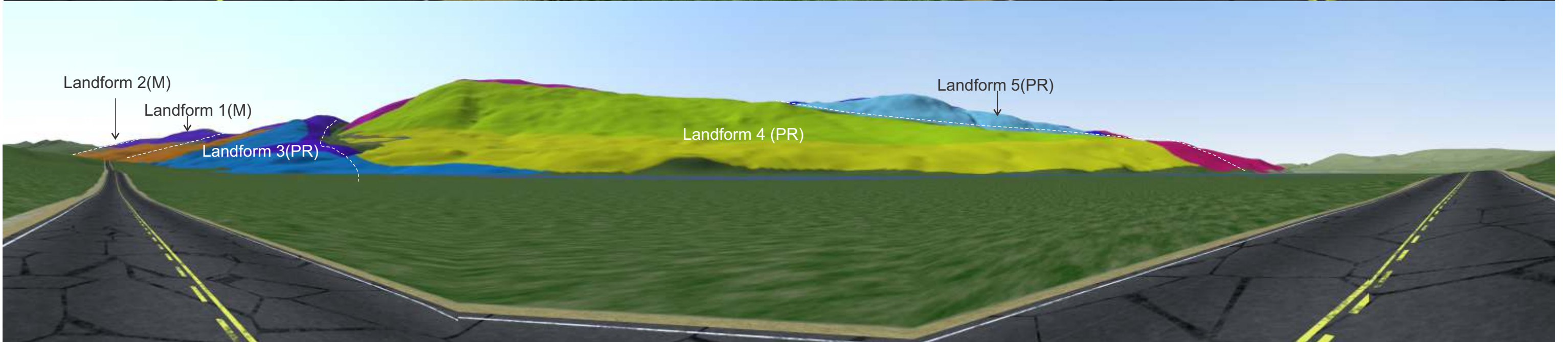
Landform 2(M)

Landform 1(M)

Landform 3(PR)

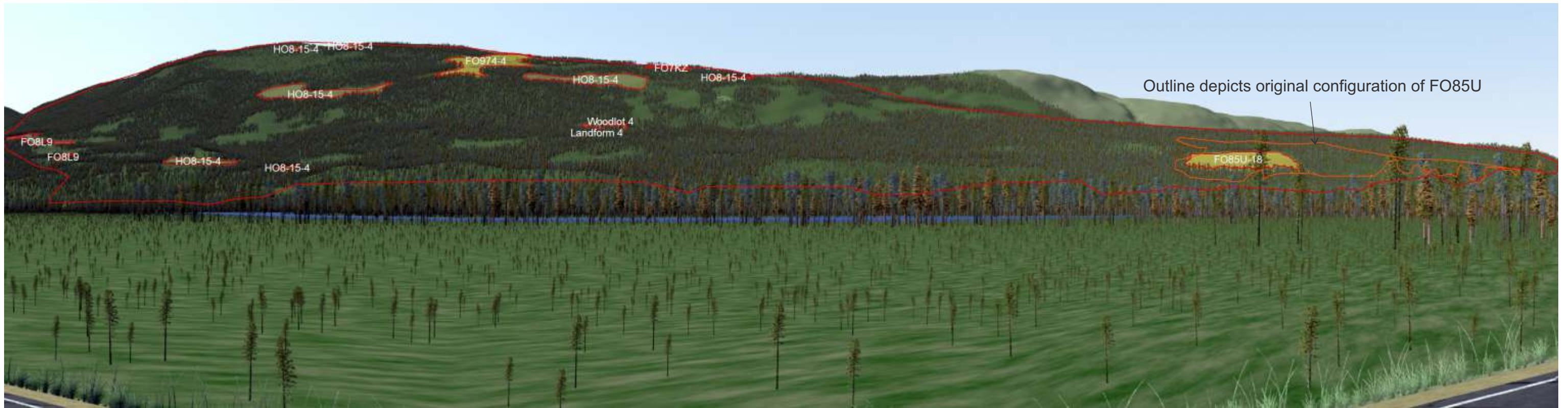
Landform 4 (PR)

Landform 5(PR)



FO8L9 only in L4. See McCorvie and Sandbox for L1 and L3 blocks.

No Percent Alteration prepared for Landform 4 due small size of Fo8L9.



Percent Alteration Miller Viewpoint - Revised FO85U		
Item	Area2	% Alteration
Landform 4	380977.95	
FO8L9	597.04	0.16%
FO8L9	161.66	0.04%
HO8-15-4	980.28	0.26%
HO8-15-4	138.78	0.04%
HO8-15-4	2500.54	0.66%
HO8-15-4	78.20	0.02%
HO8-15-4	163.44	0.04%
FO974-4	2647.07	0.69%
HO8-15-4	2712.24	0.71%
Woodlot 4	347.31	0.09%
HO8-15-4	221.97	0.06%
FO85U-18	3955.88	1.04%
FO7KZ	142.09	0.04%
Sum Alt	14646.49	3.84%

Landform 4 meets mid-range Partial Retention by Percent Alteration. The revised FO85U sits on the right half of the landform and is small in scale in itself, relative to the right half of the landform. The cutblock exhibits conformity with the horizontally oblong shape of the right side of the landform and should appear fairly natural and well-absorbed visually (high VAC) when examined with existing extensive patterns in the landscape (see photo on previous page). The cutblock has been greatly reduced in scale from the original configuration, in response to RDI's 2017 findings and recommendations. When noticing some angularity in the small opening, KDC explained that the "block is designed to be harvested uphill with a tethered system which is why we have the straight-line boundaries. Internal reserves likely won't be feasible as the logger would not be able to reach any wood on the bottom side of them". RDI accepts that explanation, with its small size also working in its favour. The 2015 photo on the preceding page indicates the cutblock will likely be partly screened, though other views may expose the block. FO8KZ might be seen as a narrow sliver to the right of FO974/A83305-1.

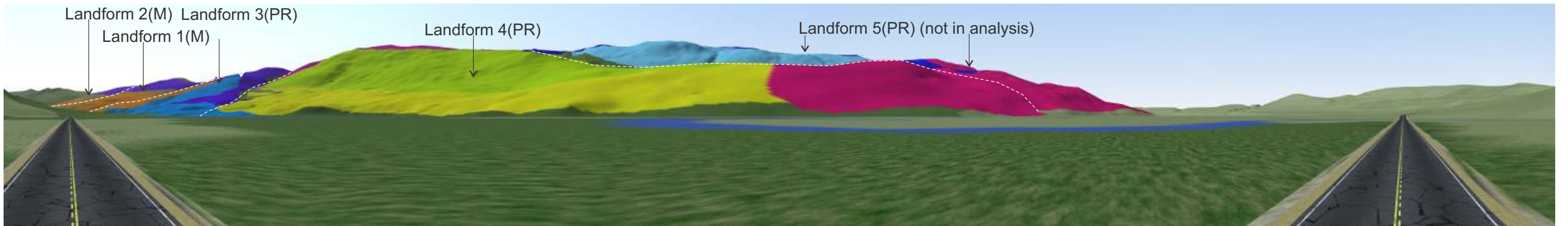
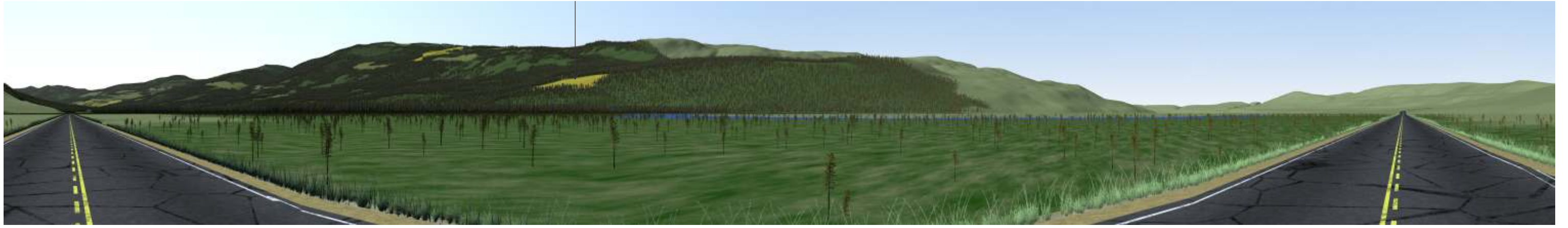
Some or all of the regenerating openings harvested since 2008 and marked H08-15 may now be exhibiting Visually Effective Green-up (VEG). If so, total alteration could be reduced by up to 1%.

See also Birch and Raft viewpoints for Landform 4.

The Partial Retention category of altered forest is 1) easy to see, 2) small to medium in scale, and 3) natural and not rectilinear or geometric in shape.



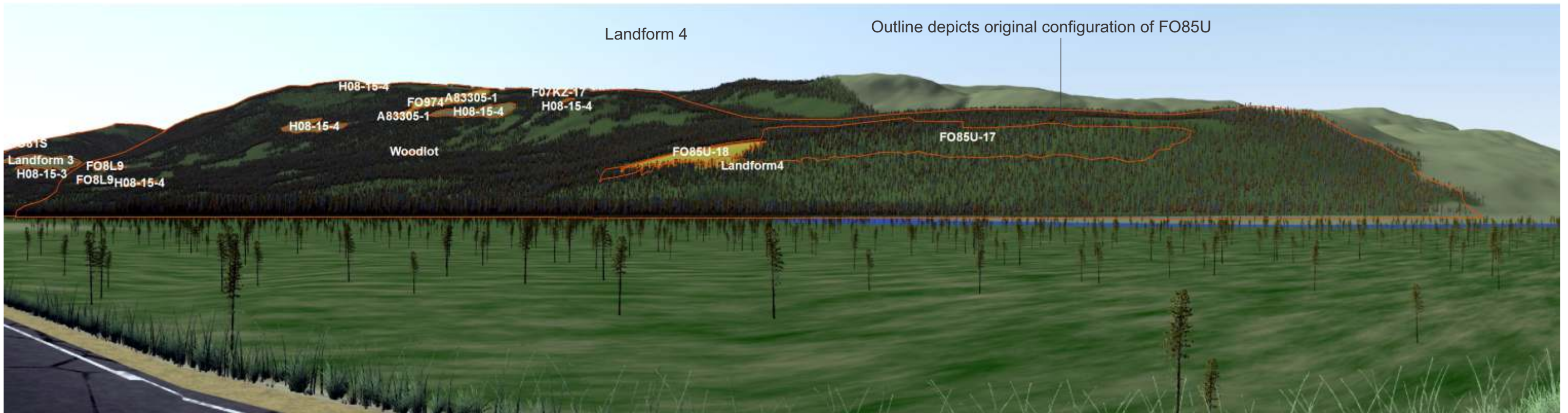
FO85U - 2018



See McCorvie and Sandbox for L1 and L3 blocks.

10015

See Percent Alteration prepared for Landform 4 on next page.



Raft Percent Alteration with Revised FO85U		
Item	Area2	% Alt
Landform4	389554.58	
FO85U-18	3578.06	0.92%
A83305-1	605.98	0.16%
A83305-1	219.49	0.06%
F0974	553.77	0.14%
H08-15-4	1143.37	0.29%
H08-15-4	1711.74	0.44%
H08-15-4	243.35	0.06%
F07KZ-17	129.87	0.03%
H08-15-4	47.17	0.01%
Woodlot	112.07	0.03%
FO8L9	293.80	0.08%
FO8L9	12.25	0.00%
FO8L9	24.72	0.01%
H08-15-4	181.68	0.05%
Sum Alt	8857.33	2.27%

Former Configuration		
FO85U-17	39834.06	10.23%

Landform 4 at 2.27% Percent Alteration is at the very low end of PR (7%) if clearly visible in its entirety. Full photo coverage not available, but the 2015 photo on the previous page indicates some screening towards the right side of the landform where FO85U in its 2018 configuration would be located. FO85U-2-2018 sits right centre on the landform and is small in scale in itself, and relative to the scale of the right side of the landform. The block exhibits conformity with the shape of the end of the landform and has natural characteristics. The cutblock has been greatly reduced in scale from the original version (as outlined in the image above), in response to RDI's 2017 findings and recommendations. The 2015 photos on the preceding page and on the next page indicate that the cutblock will likely be partly screened, though other views may expose the block. See also Birch and Miller viewpoints for Landform 4. FO7F7 and FO85R are NVS.

Regenerating openings harvested since 2008 and marked H08-15 may now be exhibiting Visually Effective Green-up (VEG). If so, total alteration could be reduced by up to 1%.

See the 2017 report for coverage of Landform 3.

## Raft Viewpoint Percent Alteration 2018 and Assessment



Raft Additional Photo