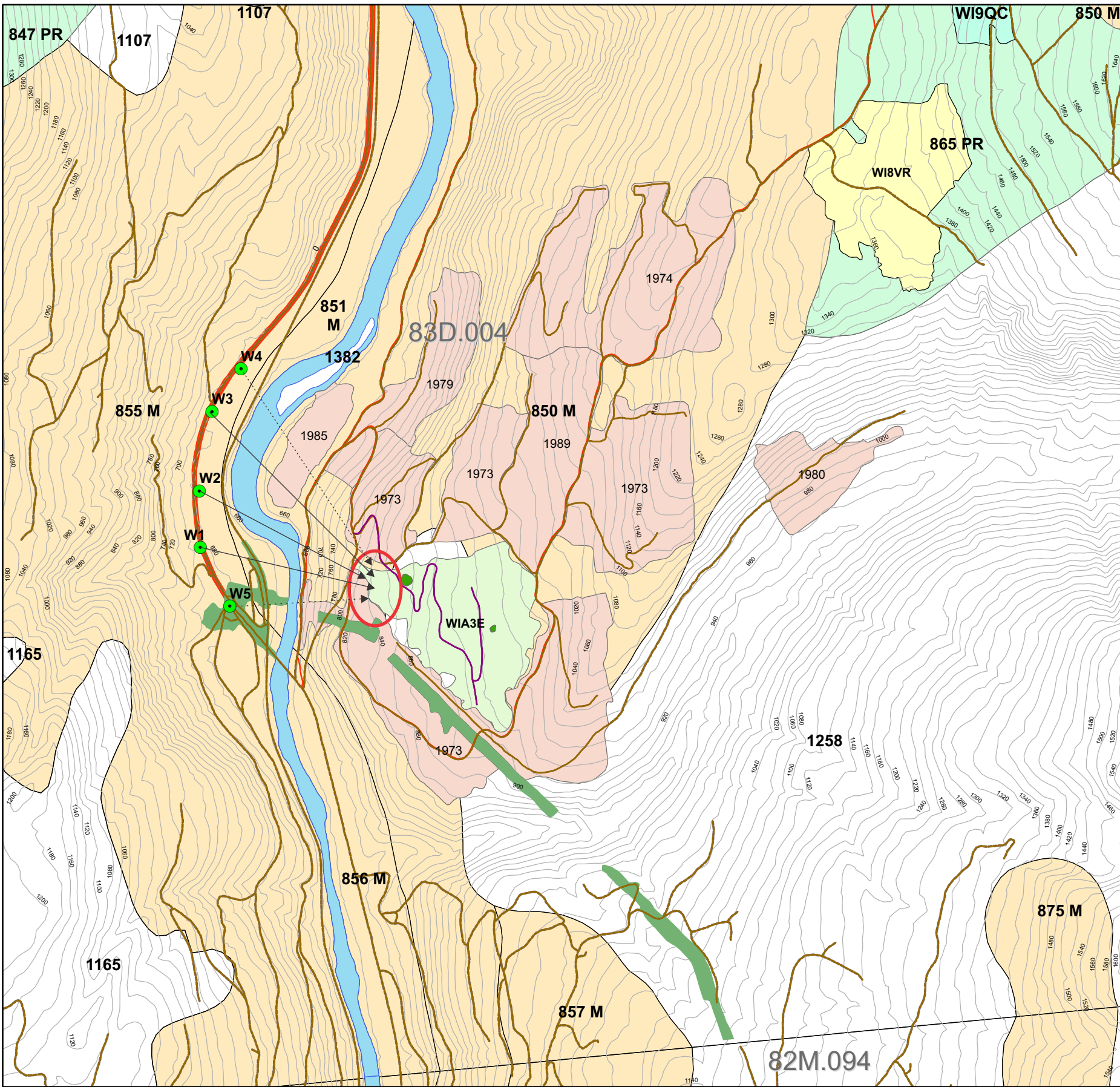
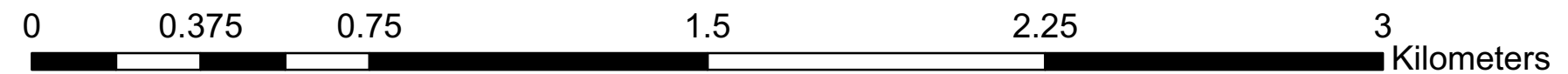
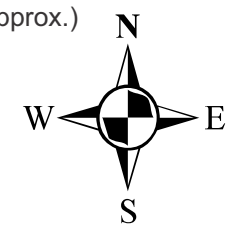


**BCTS TA1442 Wilkins WIA3E  
Visual Assessment  
RDI Resource Design Inc  
July 9,2020**



- Wilkins2020VPs
  - July\_2,\_2020\_WIA3E\_Road's
  - TRIM\_Transportation
  - TRIM\_Transportation
  - July\_2,\_2020\_WIA3E\_Road's
  - Smoke\_Creek\_&\_North\_Froth\_FSR's
  - BlueRiverRoads
  - WI9QC\_Roads
  - July\_2,\_2020\_WIA3E\_WTRA's
  - Hydro\_VRI
  - July\_2,\_2020\_Existing\_Cutblocks\_Wilkins
  - July\_2,\_2020\_WIA3E\_WTRA's
  - July\_2,\_2020\_TA1442\_WIA3E\_Block\_Shape
  - TA0648\_WI9QC\_Block\_Shape
- TRIM\_Transportation**
- - - - - TRIM\_Transportation
  - TA0132\_WTRA's
  - Mud-1718t
  - HWY5
  - RDI\_TRIM\_watercourse
- Cascades\_Scenic\_Areas**
- REC\_EVQO\_CODE**
- <Null>
  - M
  - PR

Visible (approx.)



## Summary

### Contents

1	Key Map
2	Contents, Summary
3	Viewpoints W1-W4 Simulations
4	Viewpoint W5 Simulation and Photography

### Introduction

RDI conducted this Visual Assessment for BCTS Kamloops Business Area under contract PD18TEB007. The project was requested by Ches Clem, RPF, Planning Forester, Clearwater Field Team, BCTS Kamloops Business Area on July 2, 2020. A single cutblock, TA1442 - WIA3C was provided for a simple visibility assessment requested by Ches. The data package from Ches included shapefiles for the cutblock, existing harvesting, WTRAs, and roads. As well, Ches provided 5 sequential photos from a viewpoint at the junction of the Berry Messiter FSR at Highway 5, along with the co-ordinates of the viewpoint (52 01 20.4, 119 20 38.3). RDI has called this viewpoint with the photos "W5", to be consistent with 4 other potential viewpoints (W1-W4) already in RDI's models which were selected when assessing A90299. W5 is just south of Viewpoints W1-W4 as shown on the key map (Page 1).

Each of the 5 viewpoints were rendered as single 60 degree Field of View images in VNS and placed into the CorelDraw document. The photos were placed into a panorama by RDI and added to the W5 page in the document.

### Procedures and Analysis

RDI placed new data into pre-existing Wilkins TA0648 2019 ArcGIS and VNS models. Each viewpoint was rendered with forest cover and an additional aerial view was produced from 1000m above W3 for model verification showing the complete WIA3E cutblock. The cutblock is located in a single landform within Mapsheet 083D004 in VLI\_Polygon 850 (M). It is mainly located in unclassified NVS area, entering the VSU at its lower (western) tip, and uphill to the east of the NVS area.

### Results

Of the 1 actual viewpoint (W5 - Ches' photopoint), and 4 tentative viewpoints, only 3 of the tentative viewpoints revealed just the lower (western) tip of the cutblock (W1, W2, and W3). Roadside screening was adjusted from the VRI to allow some observation, though the views may be fully screened. The tiny tip of the opening would easily meet a Retention Visual Quality Class while the VQO for the landform is Modification. RDI will provide the viewpoint shapefiles for field verification, though a field excursion is not mandatory given the minor but excellent appearance of the cutblock in the tentative views.

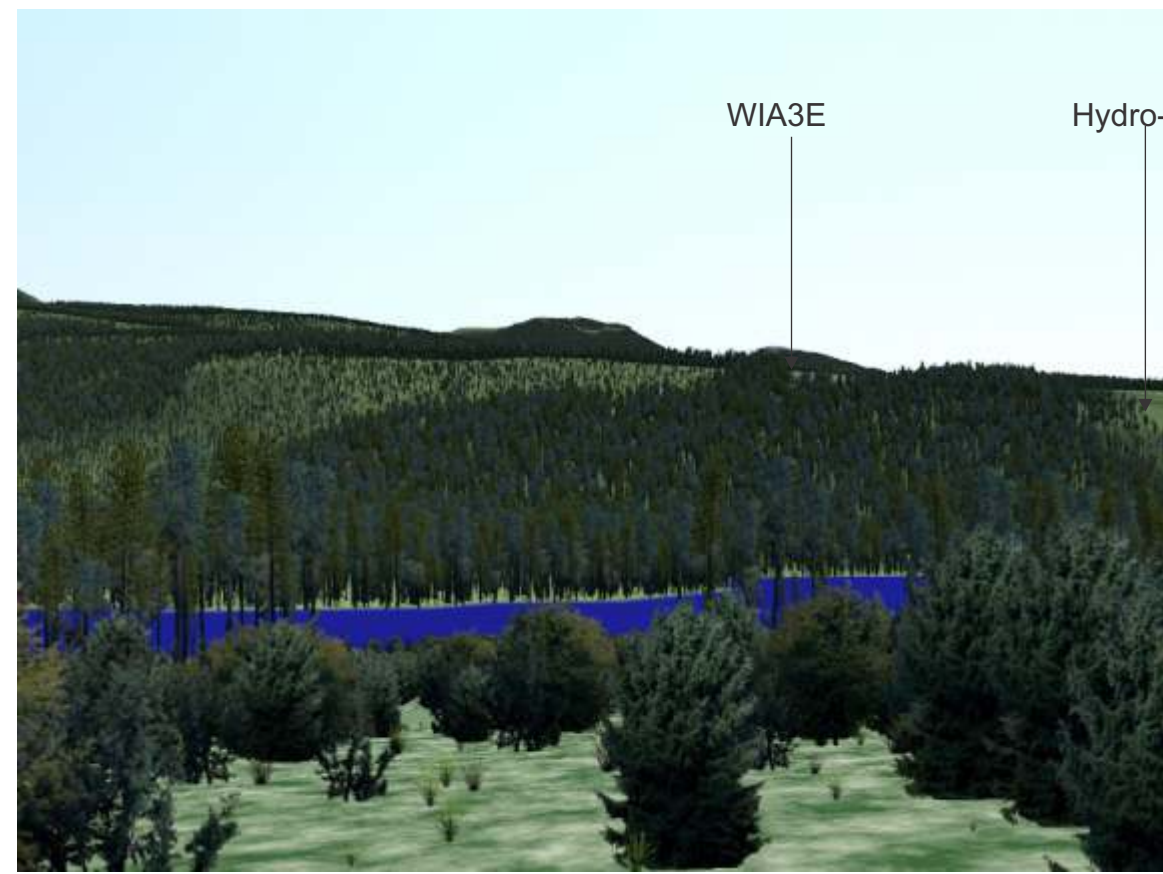


Ken B. Fairhurst, PhD, RPF  
RDI Resource Design Inc  
July 9, 2020

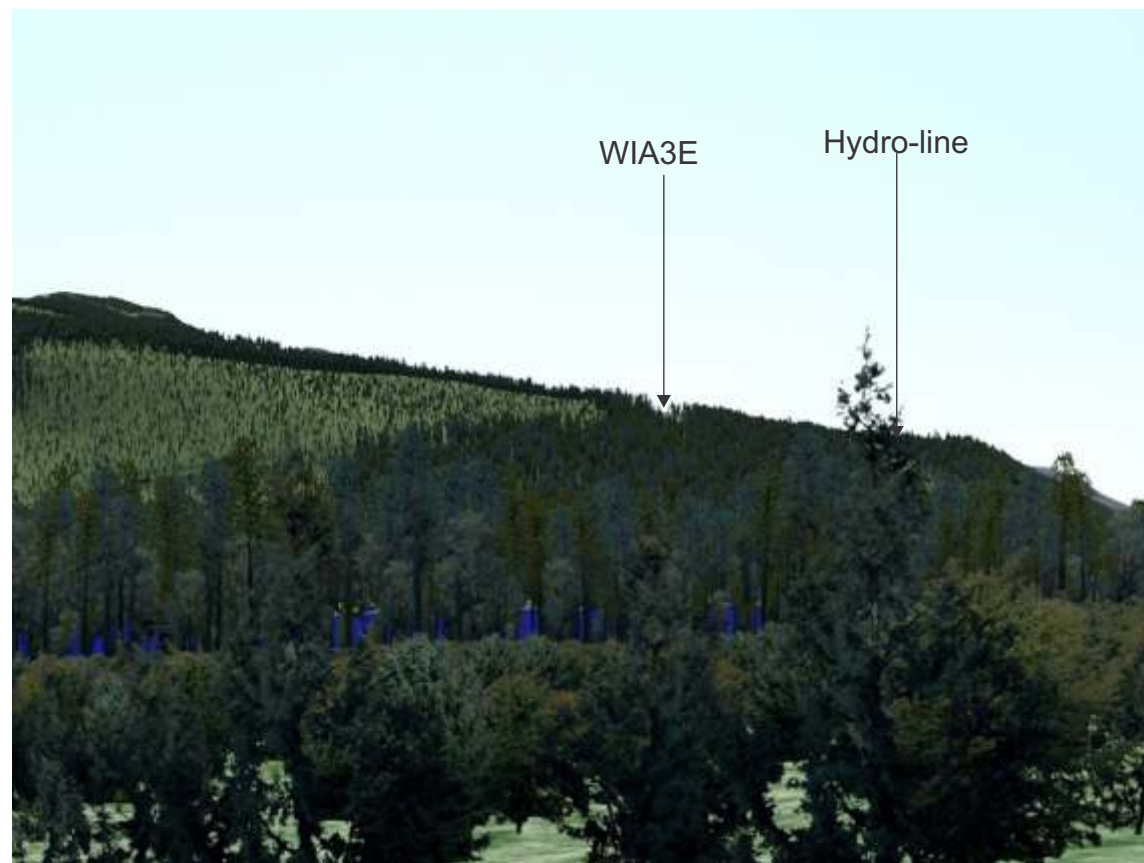




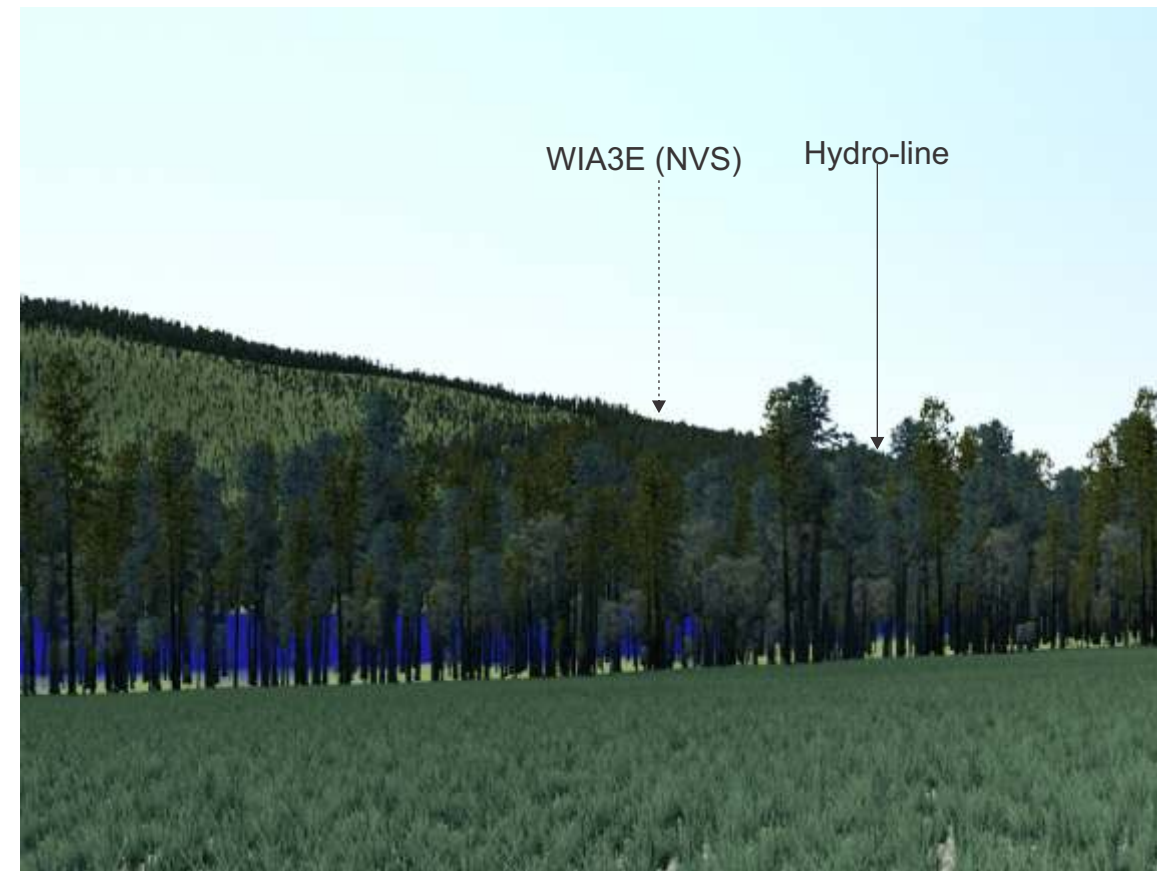
Potential Viewpoint W1 - 900m Viewing Distance



Potential Viewpoint W2 - 1000m Viewing Distance



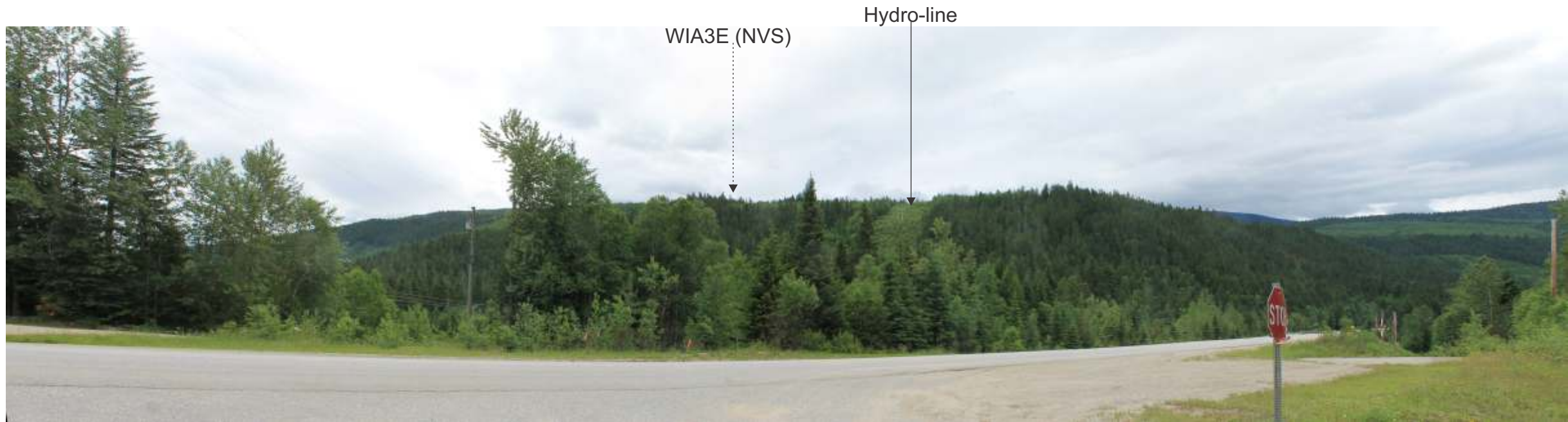
Potential Viewpoint W3 - 1200m Viewing Distance



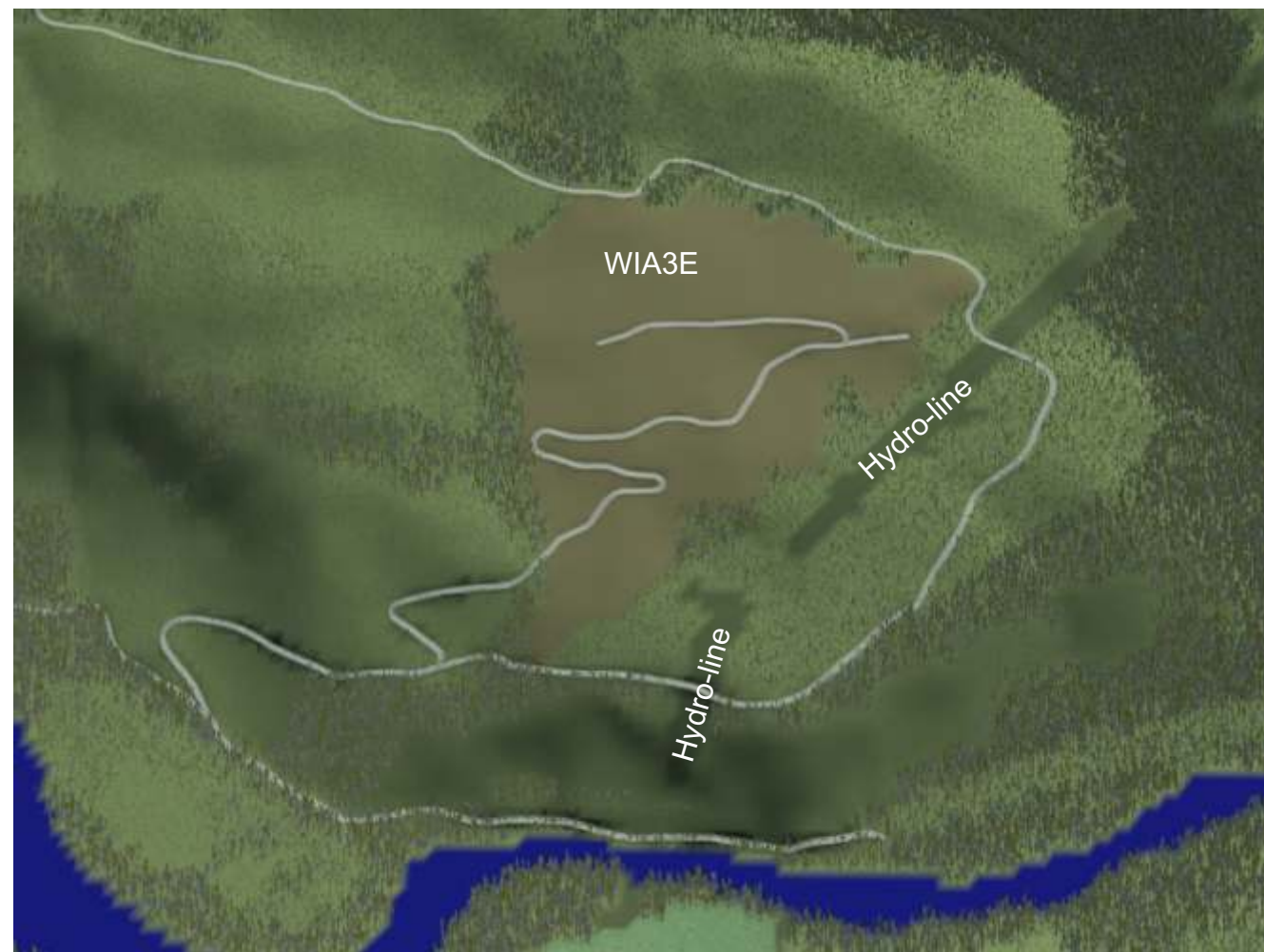
Potential Viewpoint W4

Viewpoints W1-W4 North of Junction of Berry-Messiter FSR @ Highway 5 (W5)

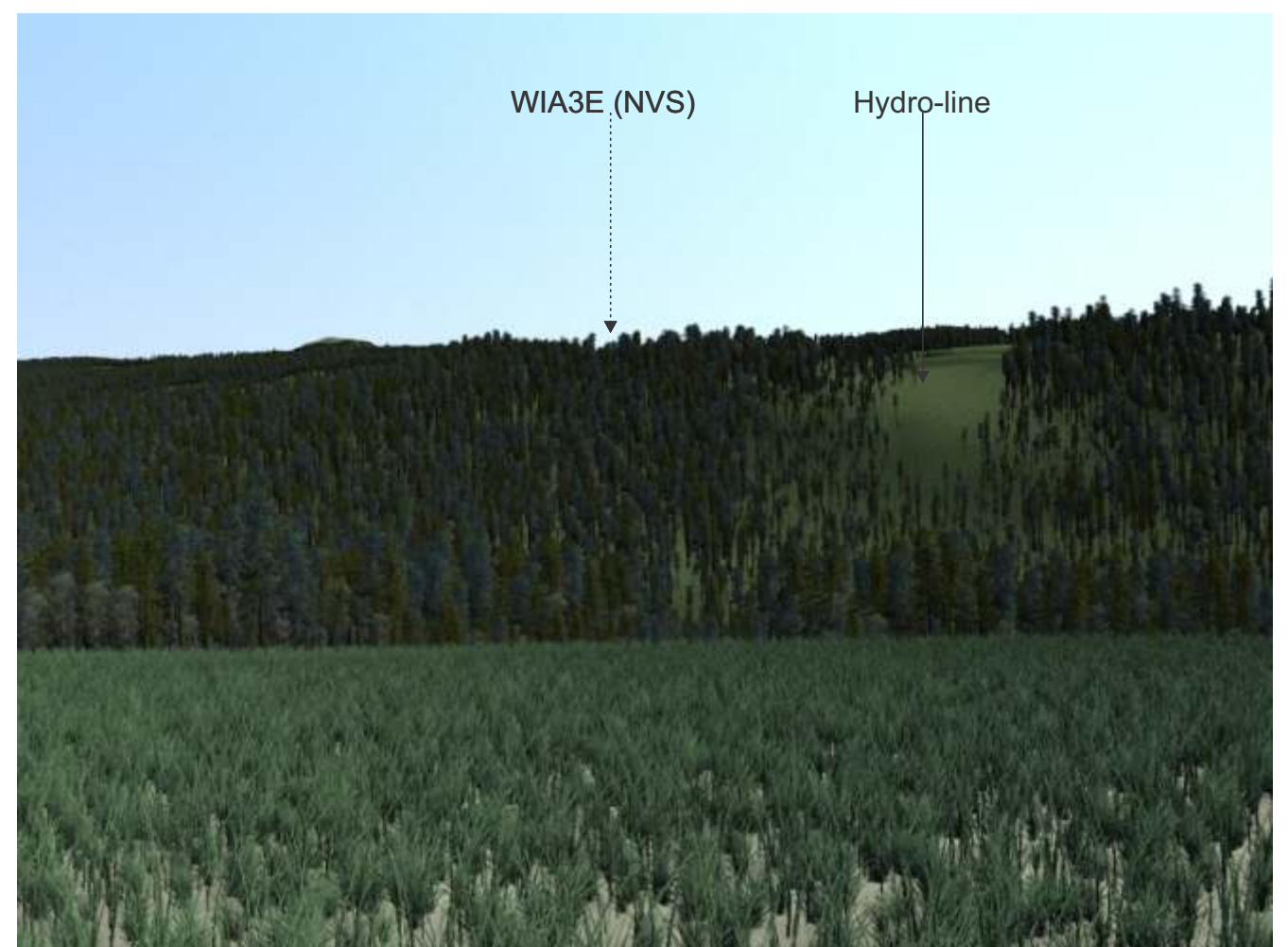




Photos by Ches Clem; Panorama Construction by RDI



Aerial Validation of Cutblock in VNS Model



Viewpoint W5 - Junction of Berry-Messiter FSR @ Highway 5