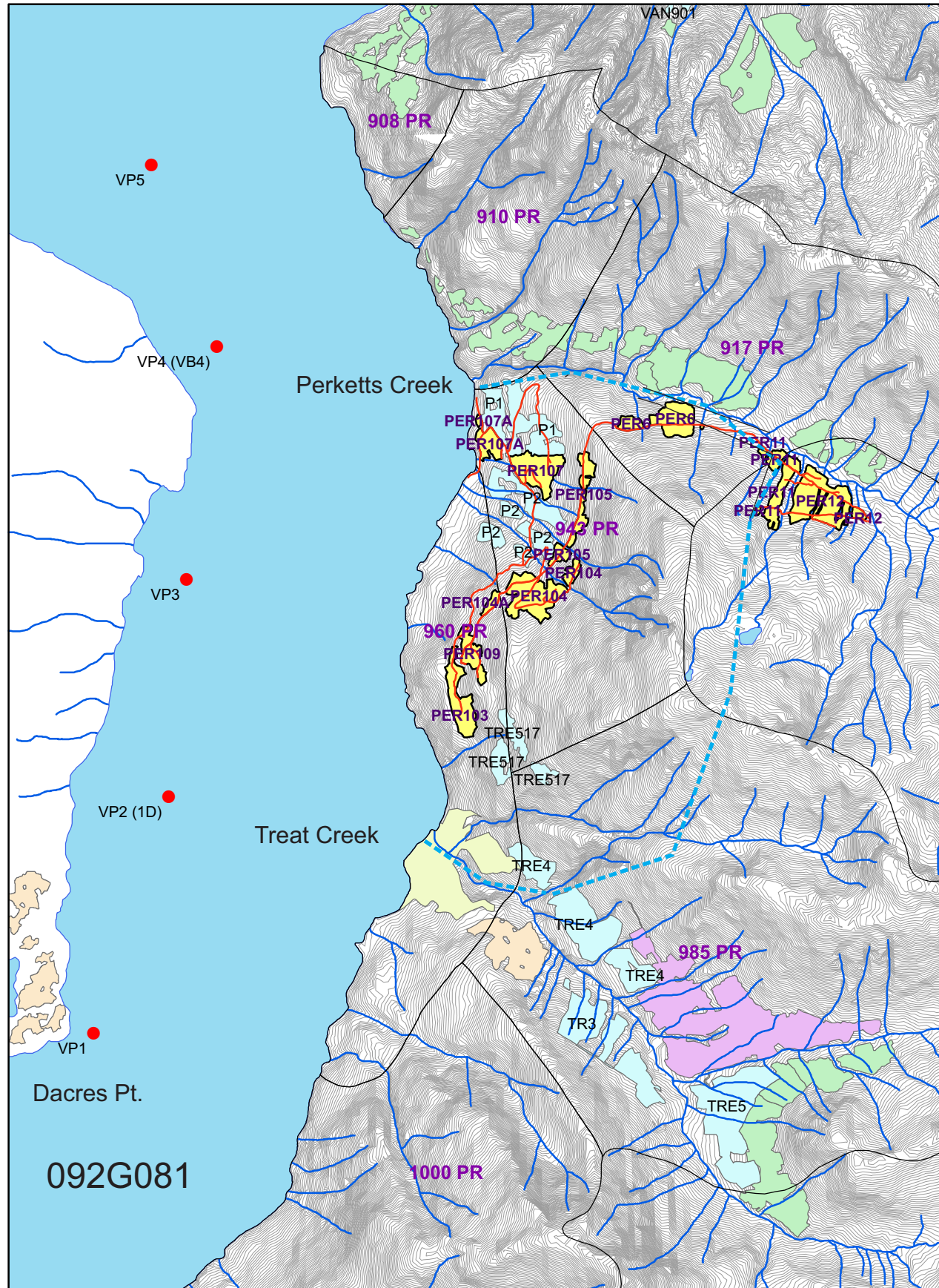


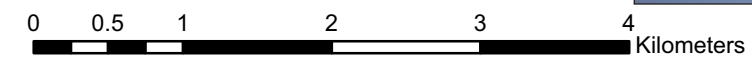
Tsain-Ko Forestry  
 South Perketts Operation  
 Visual Impact Assessment - 2024 Engineered Blocks  
 RDI Resource Design Inc  
 January 16, 2024

Amended January 18, 2024



**Legend**

- Viewpoints
  - Roads\_2024
  - Block\_Boundary\_2024
  - PM\_VLI
  - waterbody\_2
  - water\_linear\_flow\_1
  - Quarry
  - Harv\_Cmpl\_OK7
  - IFP\_FTG\_OK13
  - IFP\_Harv.
  - SR
  - Contours
- Contours 10m (LiDAR)**  
**Contours 10m (LiDAR)**
- 10m
  - 50m
  - Contours



----- Landform 1 (approx.)

VNS Planimetric

<b>1</b>	<b>Key Map</b>
<b>2</b>	<b>Contents</b>
<b>3</b>	<b>Report</b>
<b>4</b>	<b>Summary Forms VPs 4 and 5</b>
<b>5</b>	<b>Viewpoint 1 Simulation; Photo</b>
<b>6</b>	<b>Viewpoint 1 Percent Alteration</b>
<b>7</b>	<b>Viewpoint 2 Simulation</b>
<b>8</b>	<b>Viewpoint 2 Percent Alteration</b>
<b>9</b>	<b>Viewpoint 3 Simulation</b>
<b>10</b>	<b>Viewpoint 3 Percent Alteration</b>
<b>11</b>	<b>Viewpoint 4 Simulation</b>
<b>12</b>	<b>Viewpoint 4 Percent Alteration</b>
<b>13</b>	<b>Viewpoint 5 Simulation</b>
<b>14</b>	<b>Viewpoint 5 Percent Alteration</b>
<b>15</b>	<b>Existing Visual Conditions - Google Earth 2021</b>

## Contents

## Summary

The South Perketts Landform is a distinctive, isolated landform without significant breaks in the skyline, forming an easily perceived hill, 4.2km in length along the east shore of Jarvis Inlet between Perketts Creek at the north end Treat Creek at the south end.

Landform 1, as it is termed in this analysis, is comprised of 3 Visual Sensitivity Units, each with the same Visual Quality Objective - Partial Retention. For this reason, RDI has amalgamated the VSUs into a single landform - Landform 1 (Table 1). The distinct knoll and side valley at the south end was delineated as Landform 1A and was excluded from the assessment. Landform 1A is seen from Viewpoints 1 through 3 only.

The South Perketts Operating Area has 10 proposed cutblocks, 8 of which are visible to varying extents from the 5 viewpoints assessed along Jarvis Inlet (key map, Page 1). The appearance from each of the viewpoints was rendered in Visual Nature Studio. The visual results are presented on each viewpoint page, and percent alteration calculation and delineations are presented on each subsequent page, with results tabulated in Table 2 (opposite).

Percent Alteration is fully within the Partial Retention category of visual alteration from each viewpoint with Viewpoints 4 (5.76%) and 5 (5.94%) in the upper range of the allowed limits (1.5% to 7.0%) while the other 3 viewpoints are in the lower end of the range.

The cutblocks are broadly distributed across the width and height of the landform and provide high variability in shapes, sizes and pattern. Cutblock design takes full advantage of visual forces and edge screening, breaking up the longer stretches such as in PER5 and creating non-geometric shapes such as in PER4. Existing patterns from prior timber harvesting contribute high Visual Absorption Capability (VAC), and are considered by RDI to exhibit Visually Effective Greenup (VEG), including Interfor 2005-2007 cutblocks P1, P2, TRE517, and TRE4, rendered in each viewpoint simulation and in the VNS planimetric on page 1. RDI's last visual inspection was in 2017 during a Jarvis Inlet boat tour (photo, page 6). RDI acquired Google Earth images from 2021 to confirm VEG throughout the landform (p. 15).

RDI has produced Visual Impact Assessment Summary Forms for both Viewpoint 4 and 5. The other 3 viewpoints were much lower in percent alteration and therefore summary forms were deemed unnecessary.

Good design qualities resulted in a reduction of percent alteration, with the Viewpoint 4 result of 4.15% Adjusted Visual Quality Class, down from 5.76%, and Viewpoint 5 of 4.26% Adjusted Visual Quality Class, down from 5.92%, ensuring the two viewpoints with the greatest percent alteration are well-within the Partial Retention limits when design was considered.

Per convention, the quarry operation at Treat Creek, while highly visible and grabbing attention away from the main landform, does not contribute to percent alteration as it is a non-forest land-use..

In conclusion, Tsain-Ko Forestry has provided an excellent cutblock array designed to well-meet the Partial Retention VQO.



Ken B. Fairhurst, PhD, RPF  
RDI Resource Design Inc  
January 18, 2024

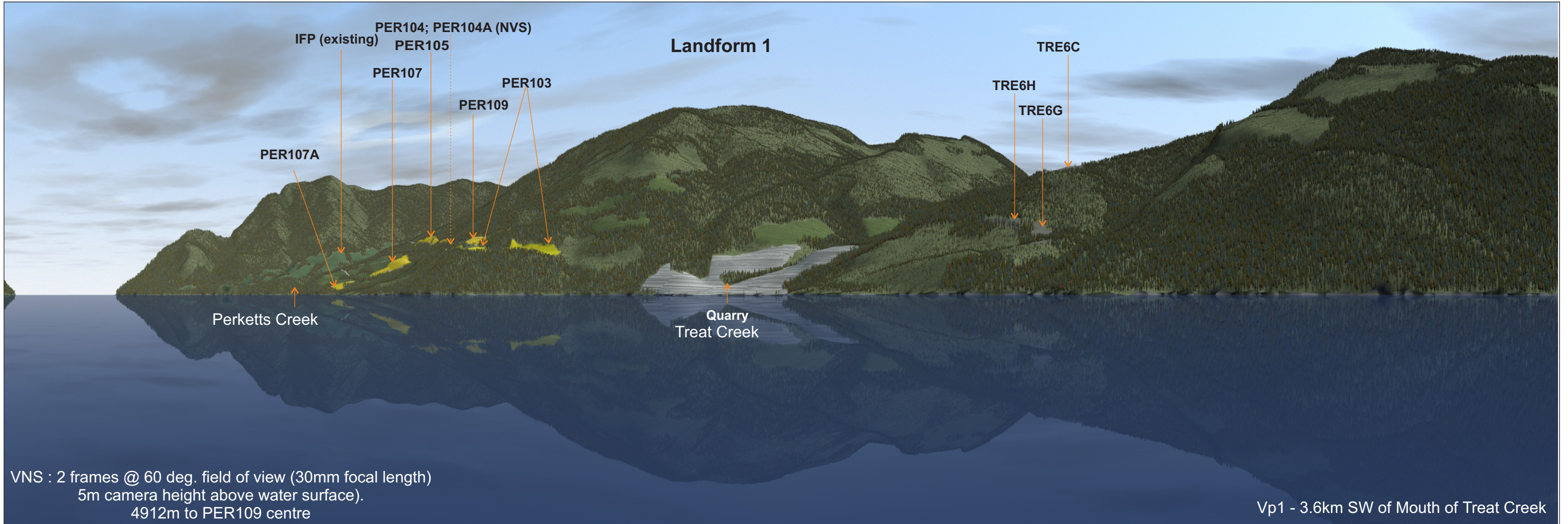
Table 1

Visual Sensitivity Components of Landform 1, with Cutblocks		
Landform	Visual Sensitivity Unit	Cutblocks
Landform 1 - width creek mouth-to- creek mouth: 4.2km	960-PR	PER104A, PER109, PER103
	953-PR	PER104, PER105, PER107, PER107A
	917-PR	PER6, Lower Tip of PER11 (nvs)
NVS	NVS	PER11 (main-nvs), PER12 (nvs)
Rationale for combining VSUs in Landform 1 - Same VQOs; uniform single hillform		

Table 2

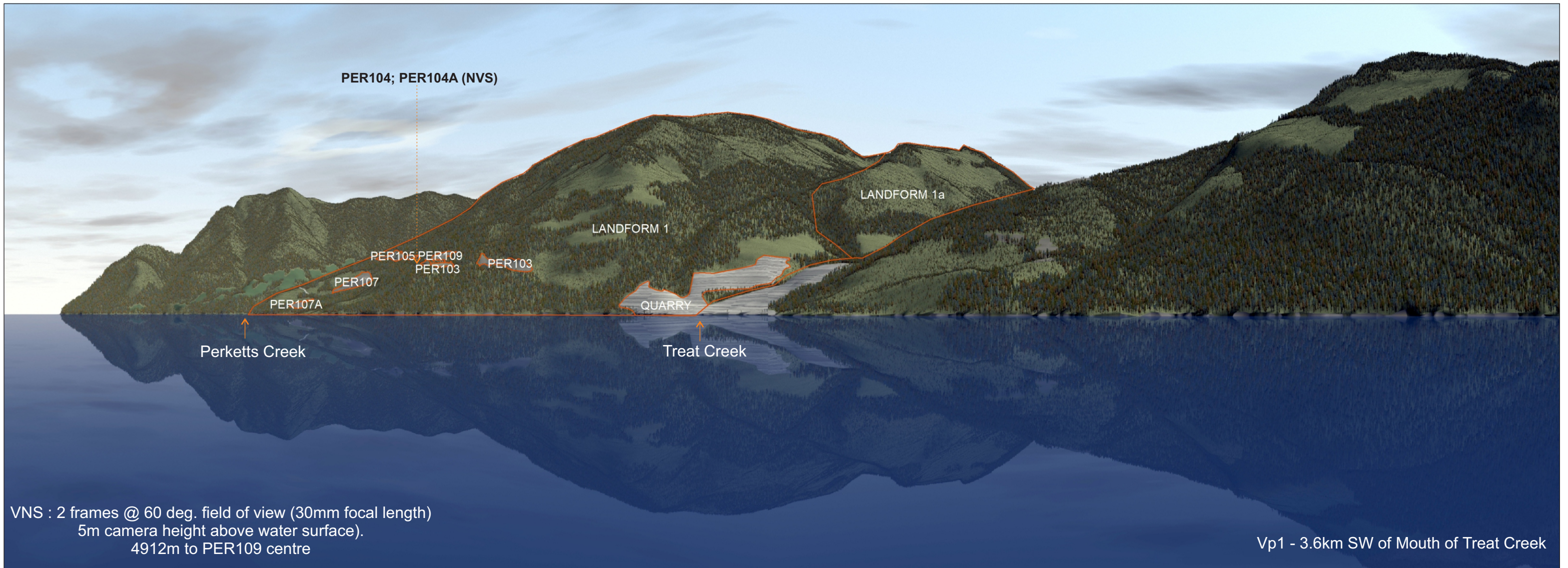
Percent Alteration Summary by Viewpoint		Percent Alteration Summary by Viewpoint and Cutblock							
Viewpoint	%Alt	PER106	PER107A	PER107	PER104A	PER104	PER105	PER109	PER103
Viewpoint 5	5.94%	0.06%	0.36%	1.38%	0.02%	1.97%	1.19%	0.36%	0.06%
Viewpoint 4	5.76%	NVS	0.53%	1.59%	0.01%	2.09%	1.17%	0.32%	0.06%
Viewpoint 3	3.25%	NVS	0.38%	0.98%	0.01%	0.55%	0.69%	0.50%	0.14%
Viewpoint 2	1.73%	NVS	0.13%	0.46%	NVS	NVS	0.29%	0.21%	0.59%
Viewpoint 1	1.71%	NVS	0.11%	0.44%	NVS	NVS	0.25%	0.16%	0.76%
Excludes Quarry and Landform 1a									
Collection of Visual Sensitivity Units in Landform 1 all have Partial Retention Visual Quality Objective. Design quality takes precedence over percent alteration. Overall target of 1.5% to 7.0% in perspective view is achieved.									





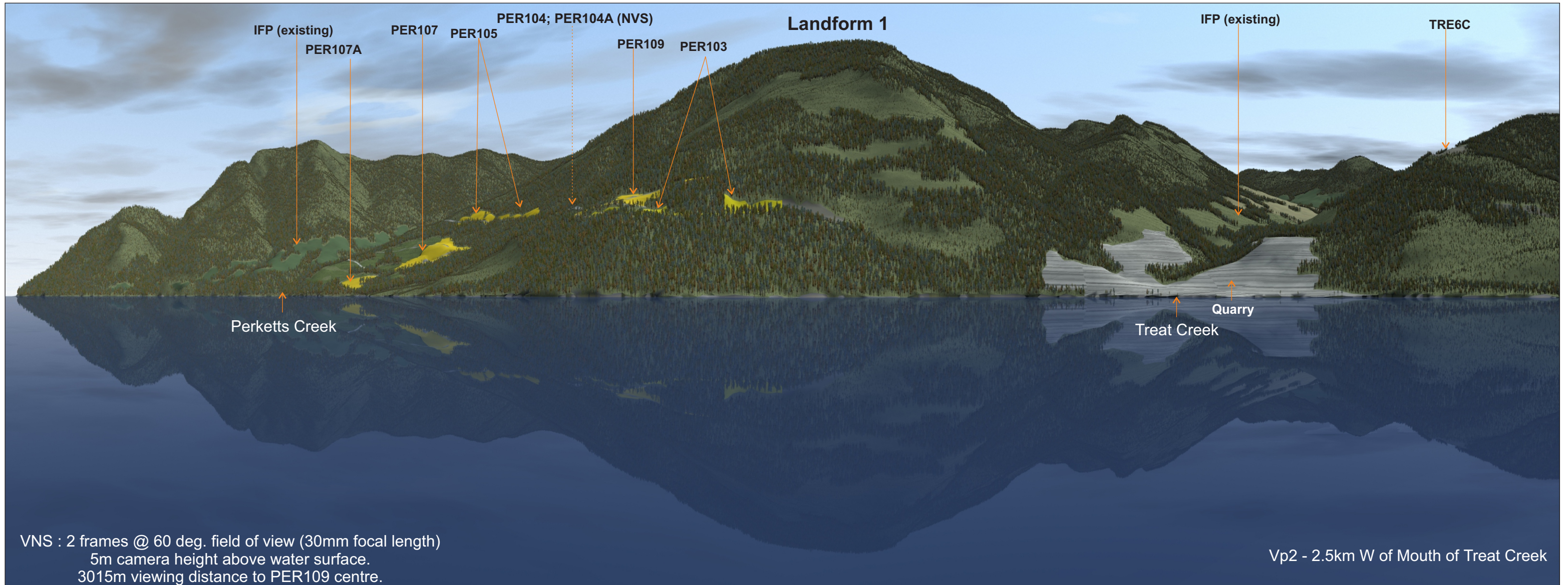
2017 Photo by K.B. Fairhurst

Viewpoint 1

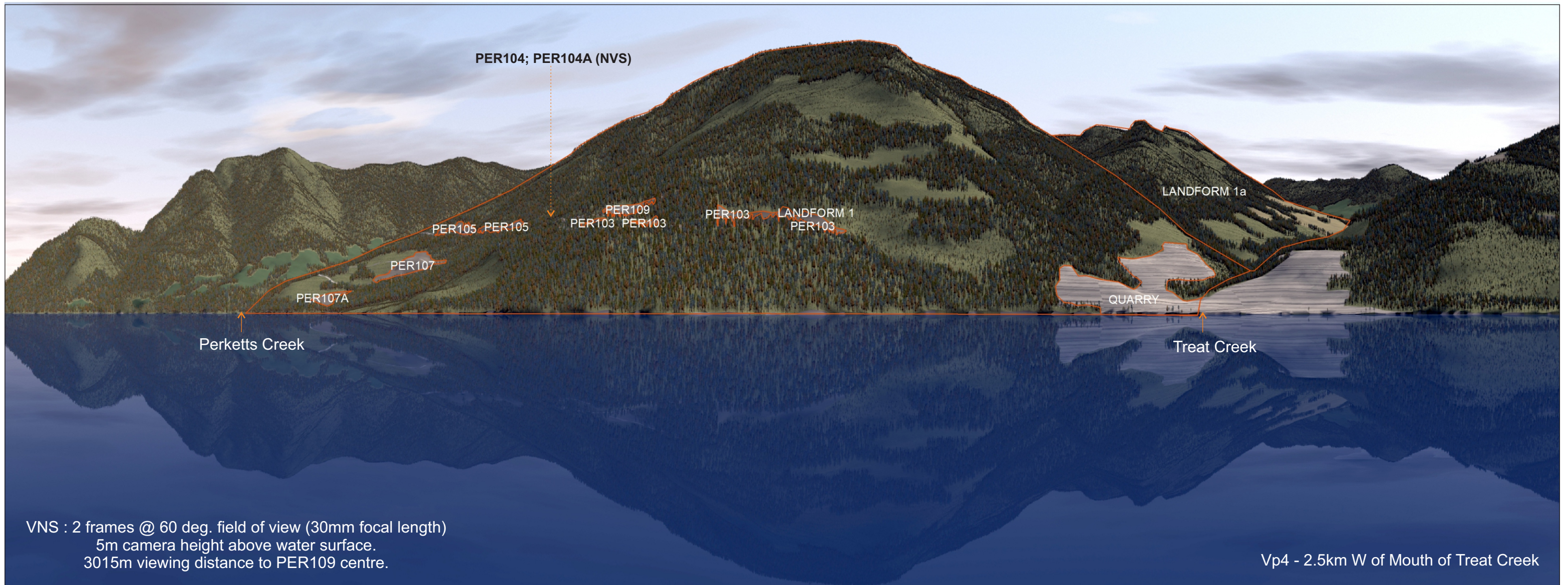


Percent Alteration South Perketts 2024 - Viewpoint 1		
Name	AREA2	%Alt
LANDFORM 1	624044.57	
PER107A	659.55	0.11%
PER107	2768.39	0.44%
PER105	1235.22	0.20%
PER105	338.72	0.05%
PER109	1000.07	0.16%
PER103	984.89	0.16%
PER103	3714.44	0.60%
Sum Alt Landform 1	10701.28	1.71%
QUARRY not included in %Alt	33136.66	5.31%
LANDFORM 1a not included in calcs.	117841.09	

**Viewpoint 1 Percent Alteration**



Viewpoint 2

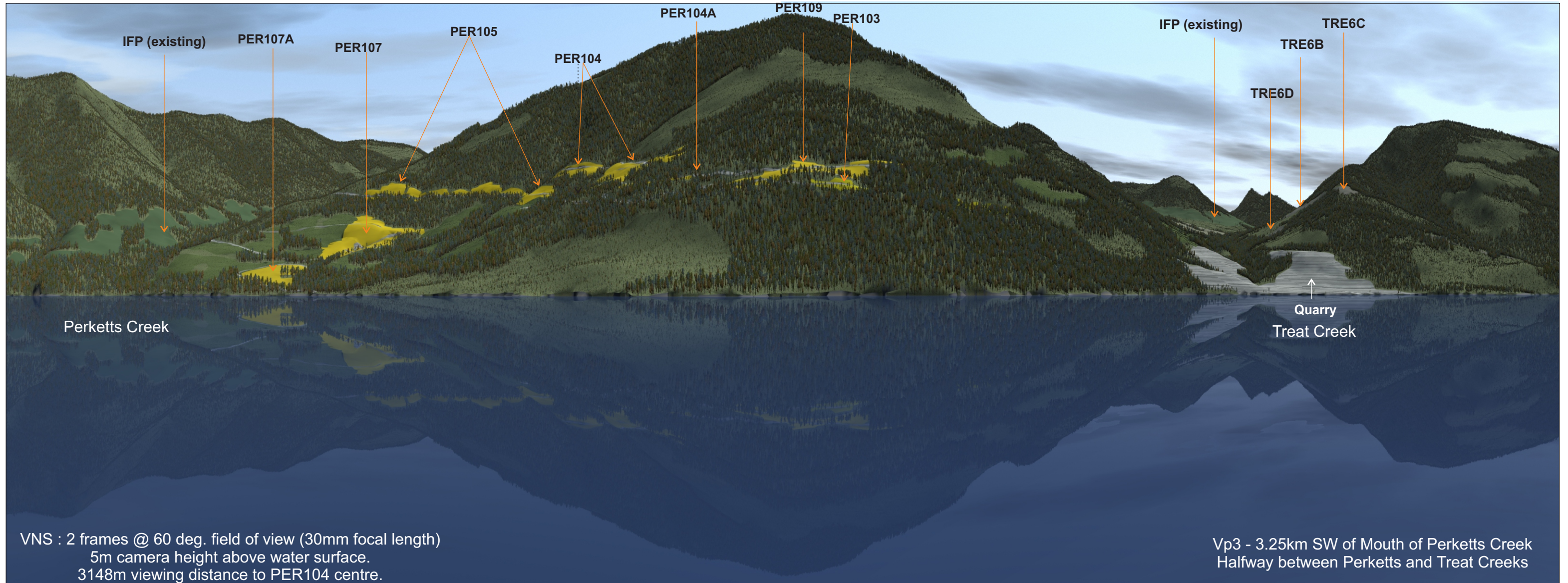


Percent Alteration South Perketts 2024 - Viewpoint 2		
Name	AREA2	%Alt
LANDFORM 1	1372258.33	
PER107A	1819.11	0.13%
PER107	6342.04	0.46%
PER105	2261.28	0.16%
PER105	1760.33	0.13%
PER109	2826.10	0.21%
PER103	819.57	0.06%
PER103	1825.64	0.13%
PER103	5518.66	0.40%
PER103	500.30	0.04%
<b>Sum Alt</b>	23673.03	<b>1.73%</b>
QUARRY (not incl. in calcs.)	55440.73	4.04%
Landform 1a (not included in calcs.)	149987.25	

### Viewpoint 2 Percent Alteration



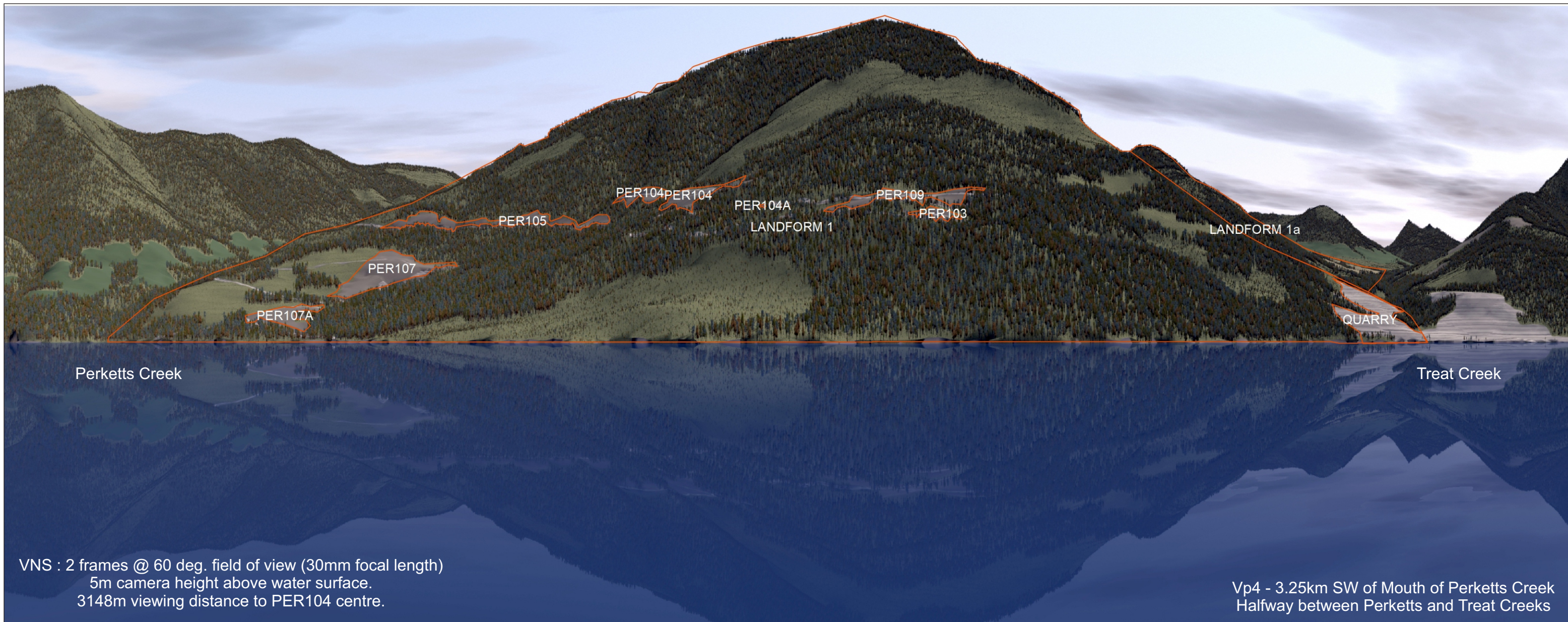
# Landform 1



VNS : 2 frames @ 60 deg. field of view (30mm focal length)  
5m camera height above water surface.  
3148m viewing distance to PER104 centre.

Vp3 - 3.25km SW of Mouth of Perketts Creek  
Halfway between Perketts and Treat Creeks

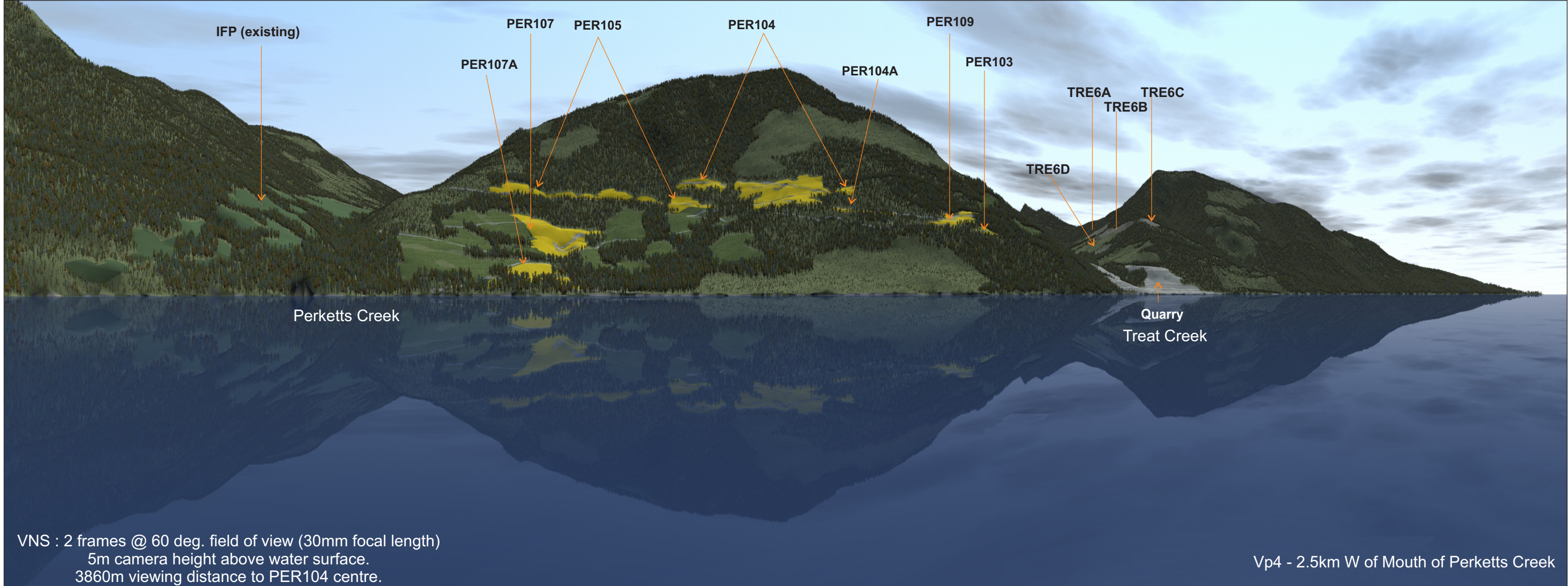
## Viewpoint 3



Percent Alteration South Perketts 2024 - Viewpoint 3		
Name	AREA2	%Alt
LANDFORM 1	1751142.73	
PER107	17191.66	0.98%
PER107A	6617.89	0.38%
PER105	12154.01	0.69%
PER104	3683.09	0.21%
PER104	5872.42	0.34%
PER104A	94.33	0.01%
PER109	8821.28	0.50%
PER103	2420.38	0.14%
<b>Sum Alt</b>	56855.05	<b>3.25%</b>
QUARRY (not included in %Alt calcs.)	19262.30	1.10%
Landform 1a (not included in %Alt calcs.)	36634.62	

**Viewpoint 3 Percent Alteration**

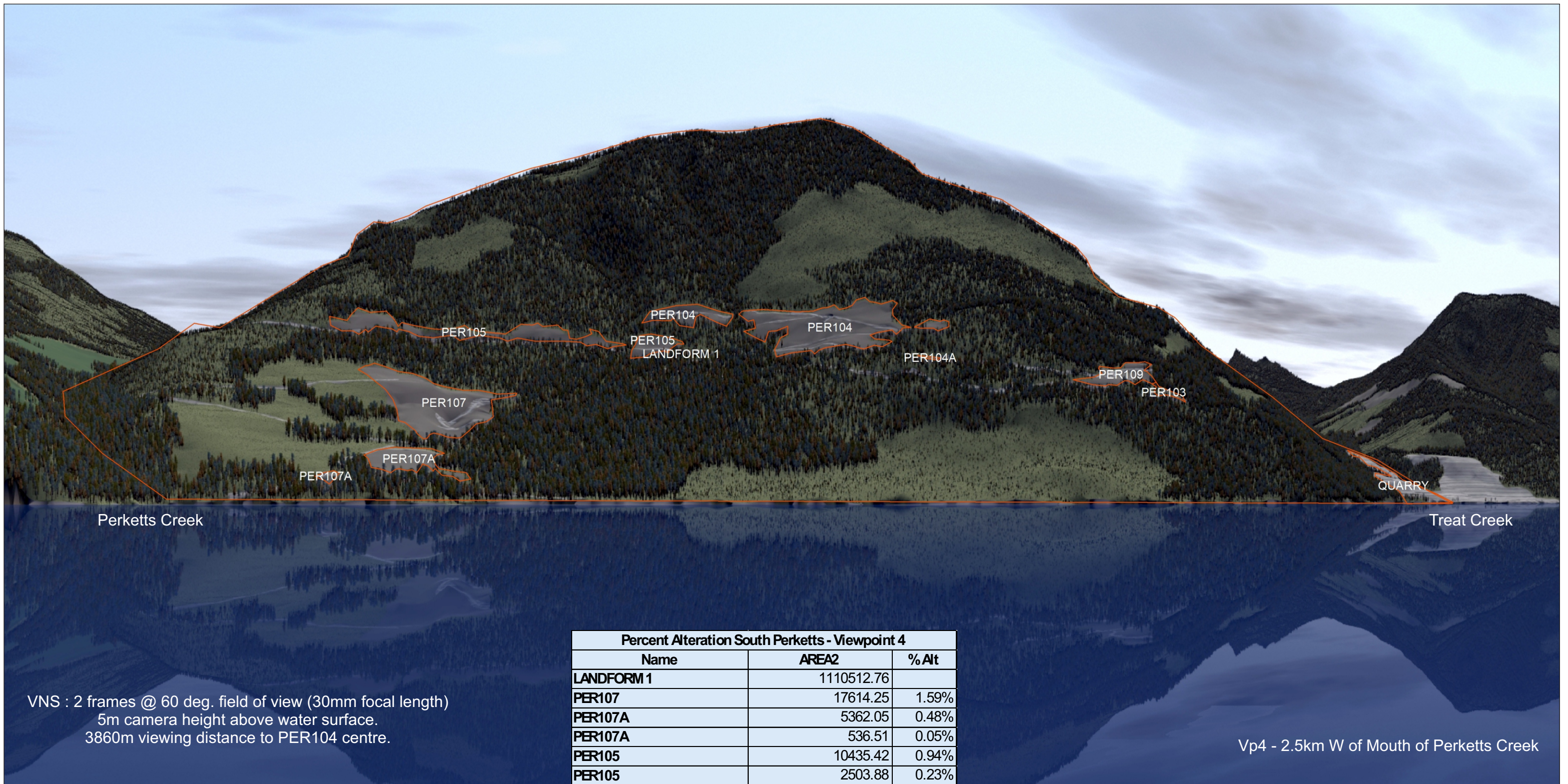
Landform 1



VNS : 2 frames @ 60 deg. field of view (30mm focal length)  
5m camera height above water surface.  
3860m viewing distance to PER104 centre.

Vp4 - 2.5km W of Mouth of Perketts Creek

Viewpoint 4

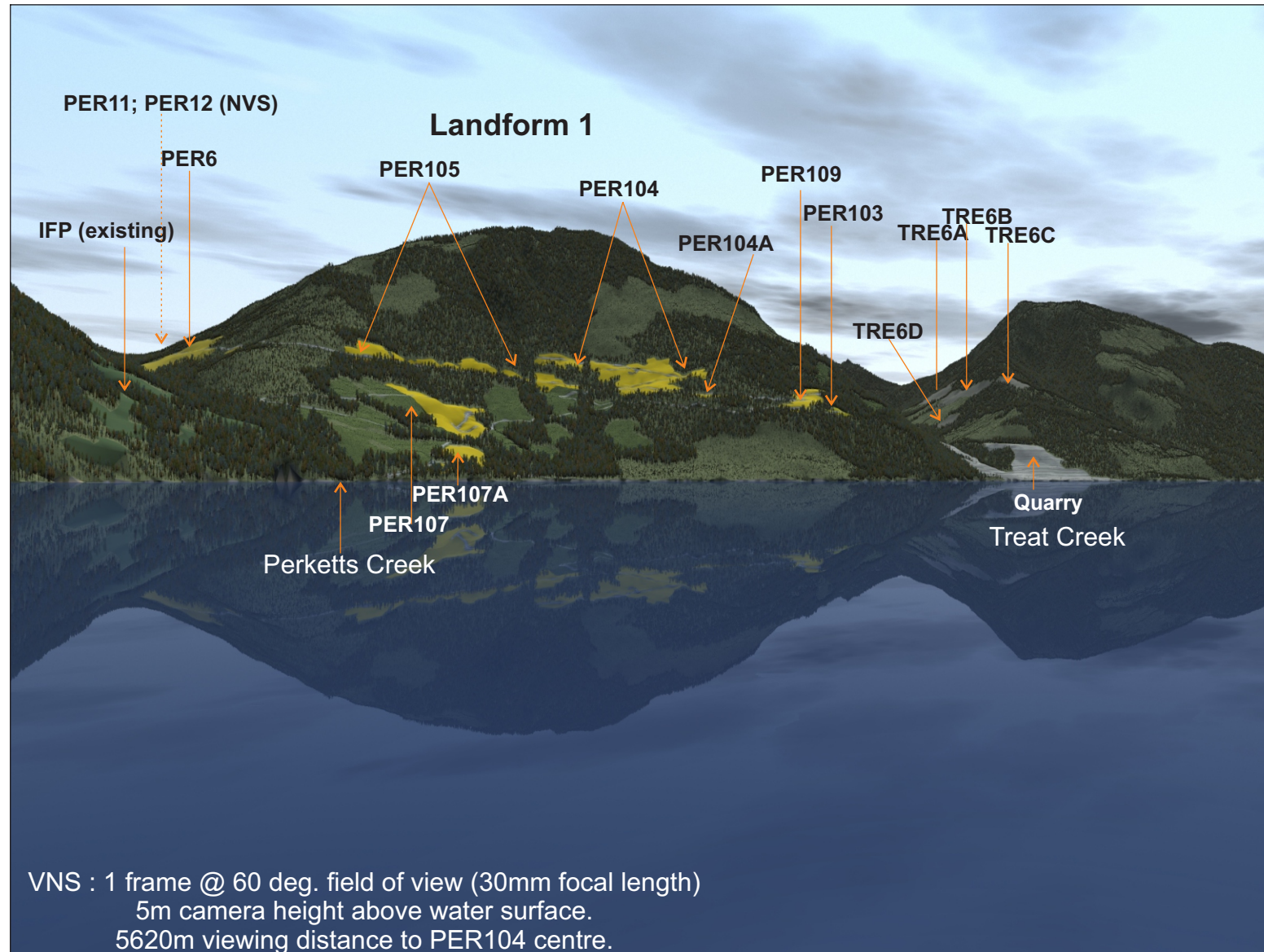


VNS : 2 frames @ 60 deg. field of view (30mm focal length)  
 5m camera height above water surface.  
 3860m viewing distance to PER104 centre.

Vp4 - 2.5km W of Mouth of Perketts Creek

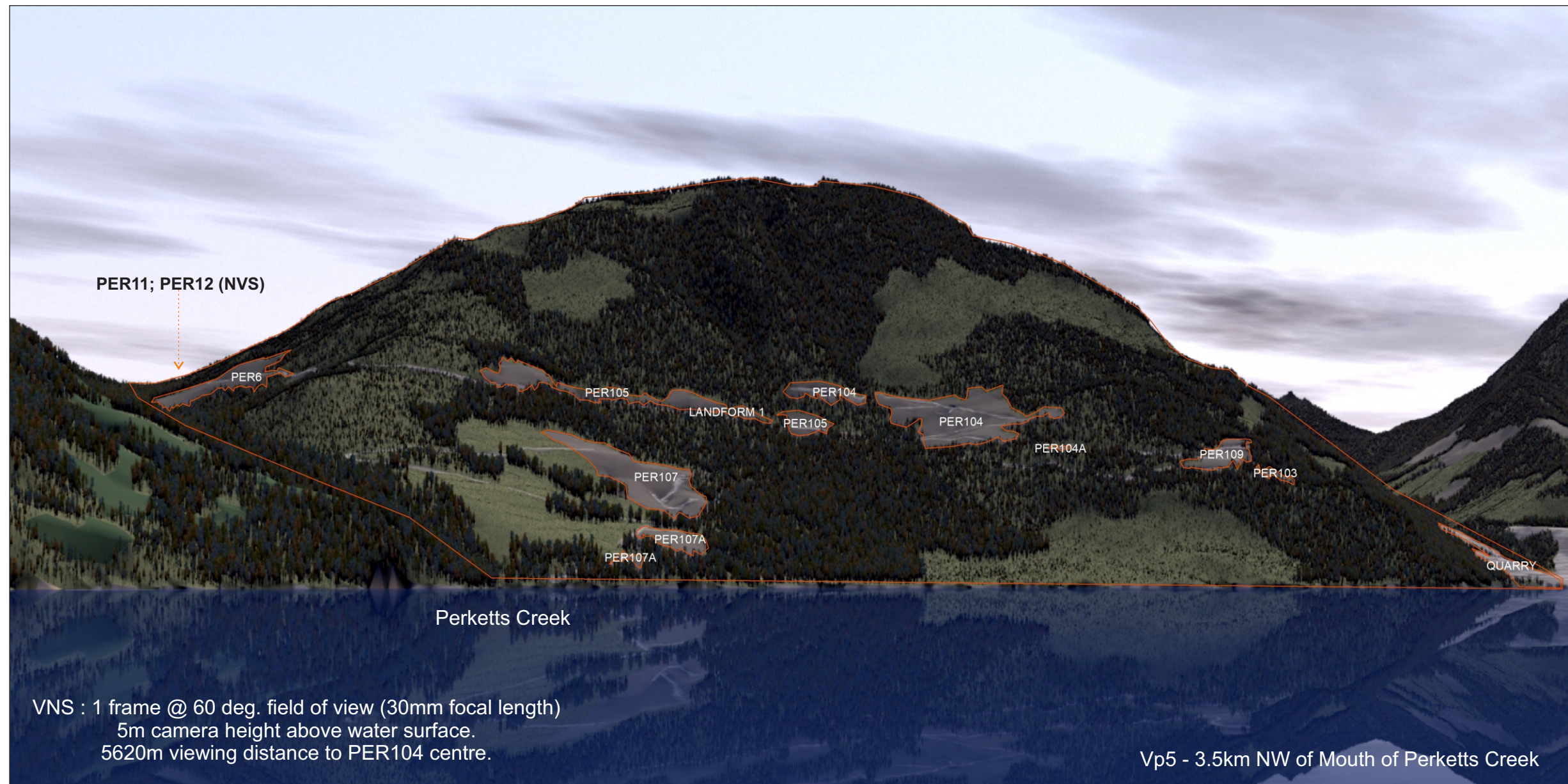
Percent Alteration South Perketts - Viewpoint 4		
Name	AREA2	%Alt
LANDFORM 1	1110512.76	
PER107	17614.25	1.59%
PER107A	5362.05	0.48%
PER107A	536.51	0.05%
PER105	10435.42	0.94%
PER105	2503.88	0.23%
PER104	3868.64	0.35%
PER104	19302.20	1.74%
PER104A	128.97	0.01%
PER109	3597.64	0.32%
PER103	610.90	0.06%
<b>Sum Alt</b>	<b>63960.46</b>	<b>5.76%</b>
QUARRY (not incl. in calcs.)	3692.80	0.33%

**Viewpoint 4 Percent Alteration**



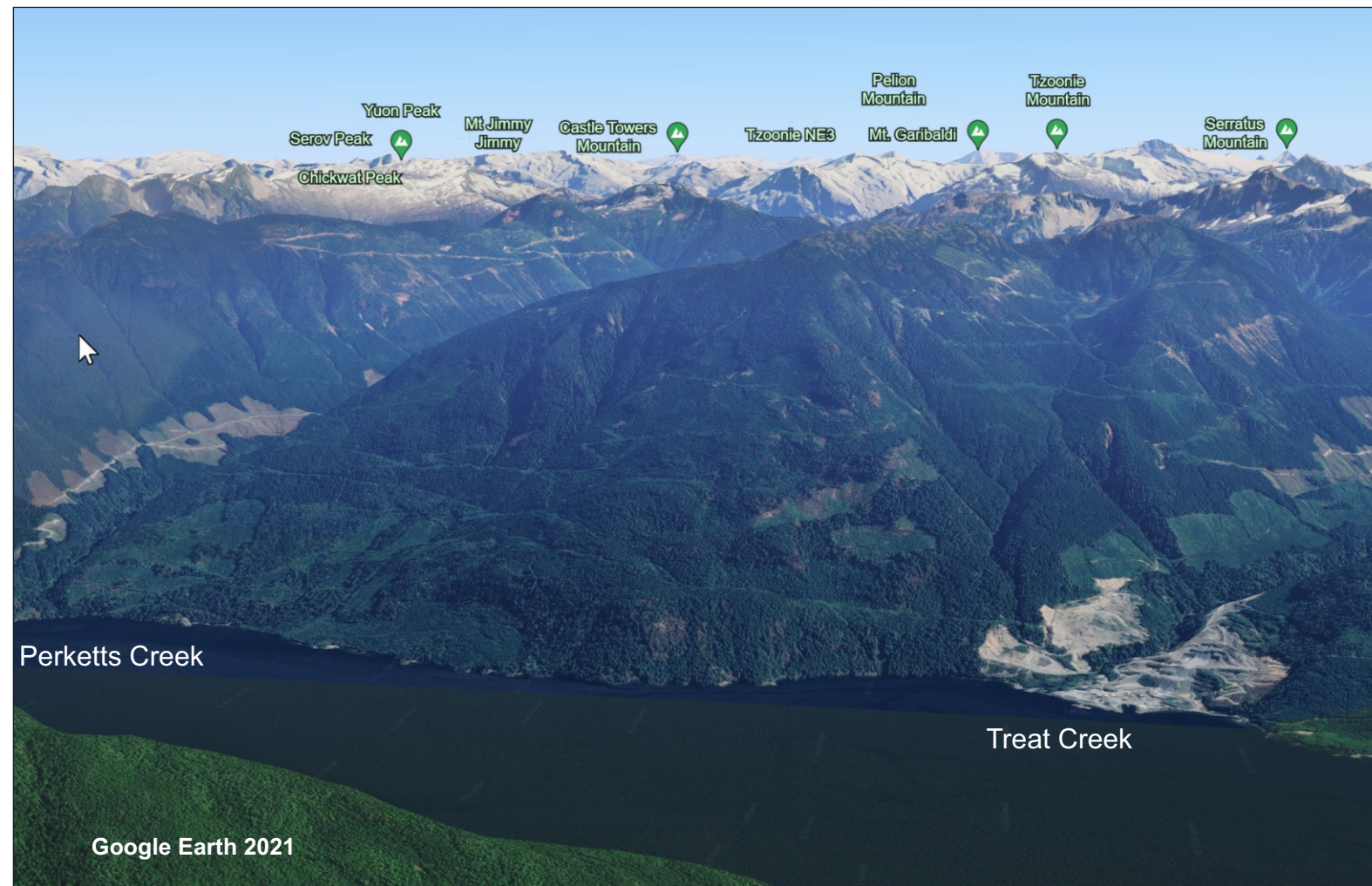
Vp5 - 3.5km NW of Mouth of Perketts Creek

**Viewpoint 5**



Percent Alteration South Perketts 2024 Viewpoint 5		
Name	AREA in Perspective	% Alt
LANDFORM 1	503650.63	
PER6	3027.23	0.60%
PER105	4822.86	0.96%
PER105	1170.94	0.23%
PER104	1571.65	0.31%
PER104	8362.55	1.66%
PER104A	86.08	0.02%
PER109	1803.14	0.36%
PER103	314.73	0.06%
PER107	6943.01	1.38%
PER107A	1530.49	0.30%
PER107A	280.71	0.06%
<b>Sum Alt</b>	29913.42	<b>5.94%</b>
QUARRY (not incl. in calcs.)	2112.95	0.42%

**Viewpoint 5 Percent Alteration**



Existing Visual Conditions - Visually Effective Greenup - 2021