

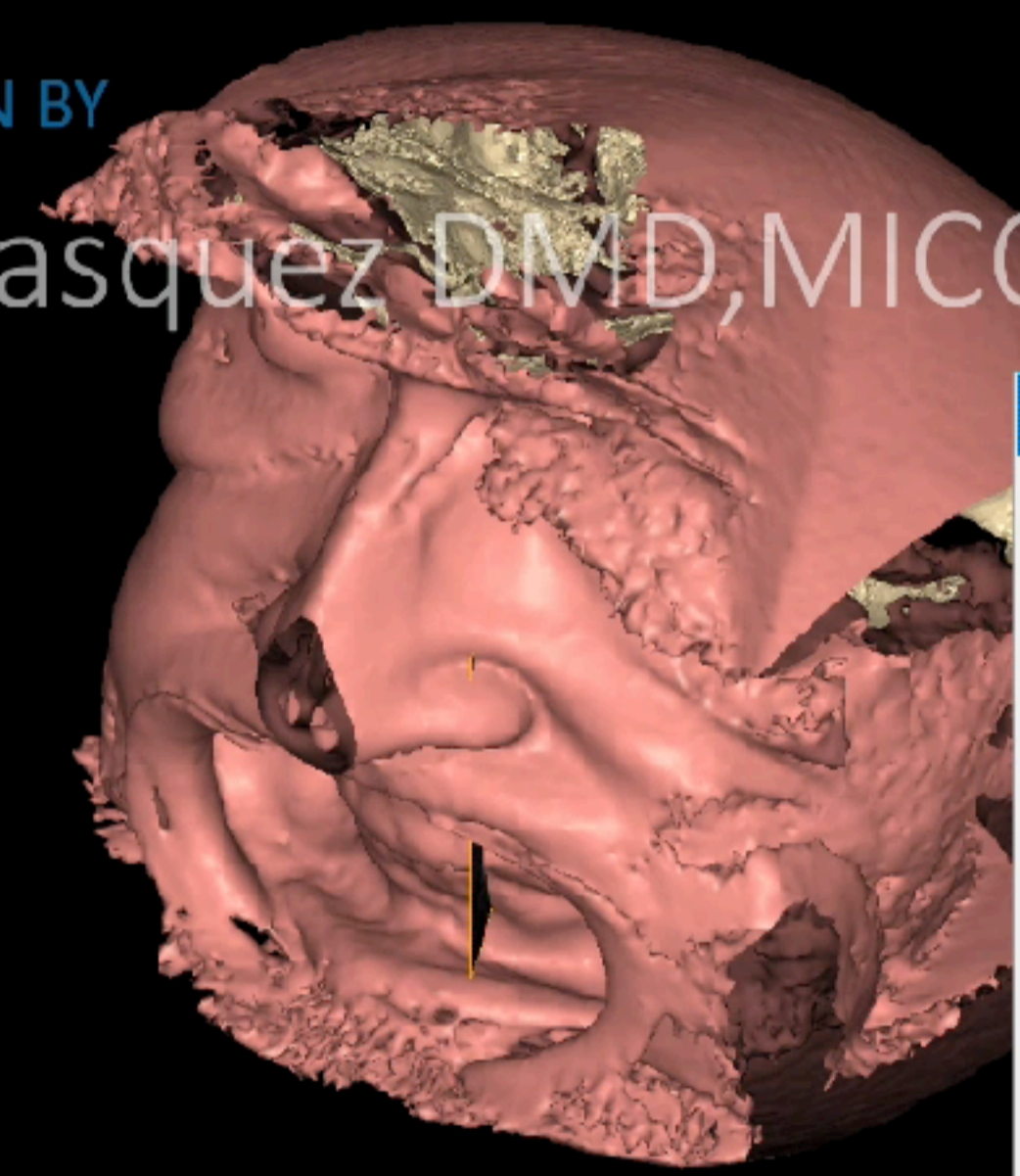
FROM SURGERY GUIDE or FREE
HAND TO LONG TERM AESTHETIC
LOADING (POLYMER REINFORCED
TEMPS)

oral design

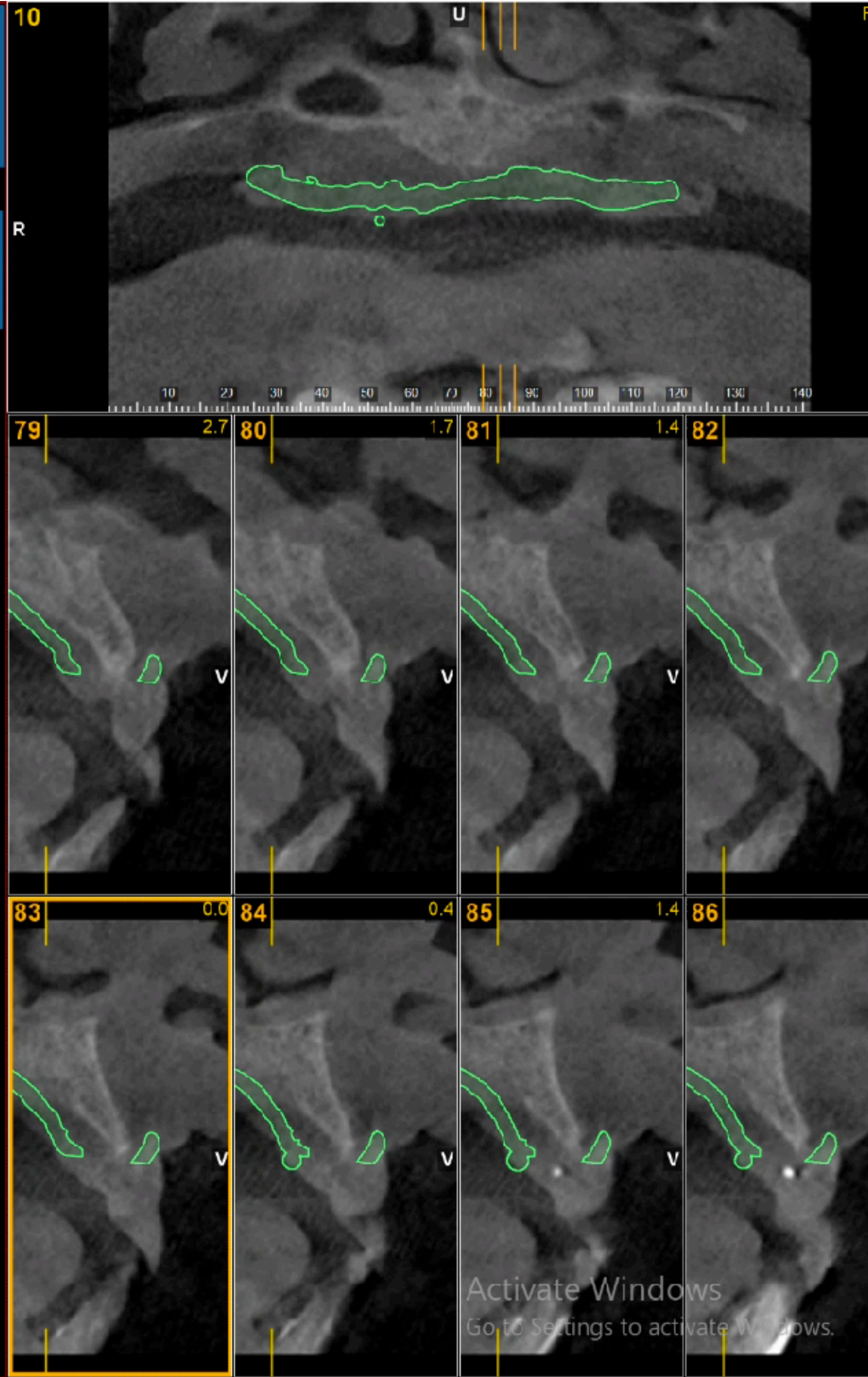
ALL TO ONE

FROM SURGERY GUIDE or FREE HAND TO LONG TERM AESTHETIC LOADING (POLYMER REINFORCED)

DESIGN BY
Javier Vasquez DMD, MICCMO, MDT



- Hide Mesh
- Unhide Mesh
- Duplicate Mesh
- Mesh Properties
- Create Mask
- Edit Mask
- Edit Mesh
- Transform
- Sculpt
- Paint
- Extrude
- Mesh Color
- Opacity



10

79 2.7 80 1.7 81 1.4 82

83 0.0 84 0.4 85 1.4 86

Activate Windows
Go to Settings to activate Windows.

ALL-TO-ONE

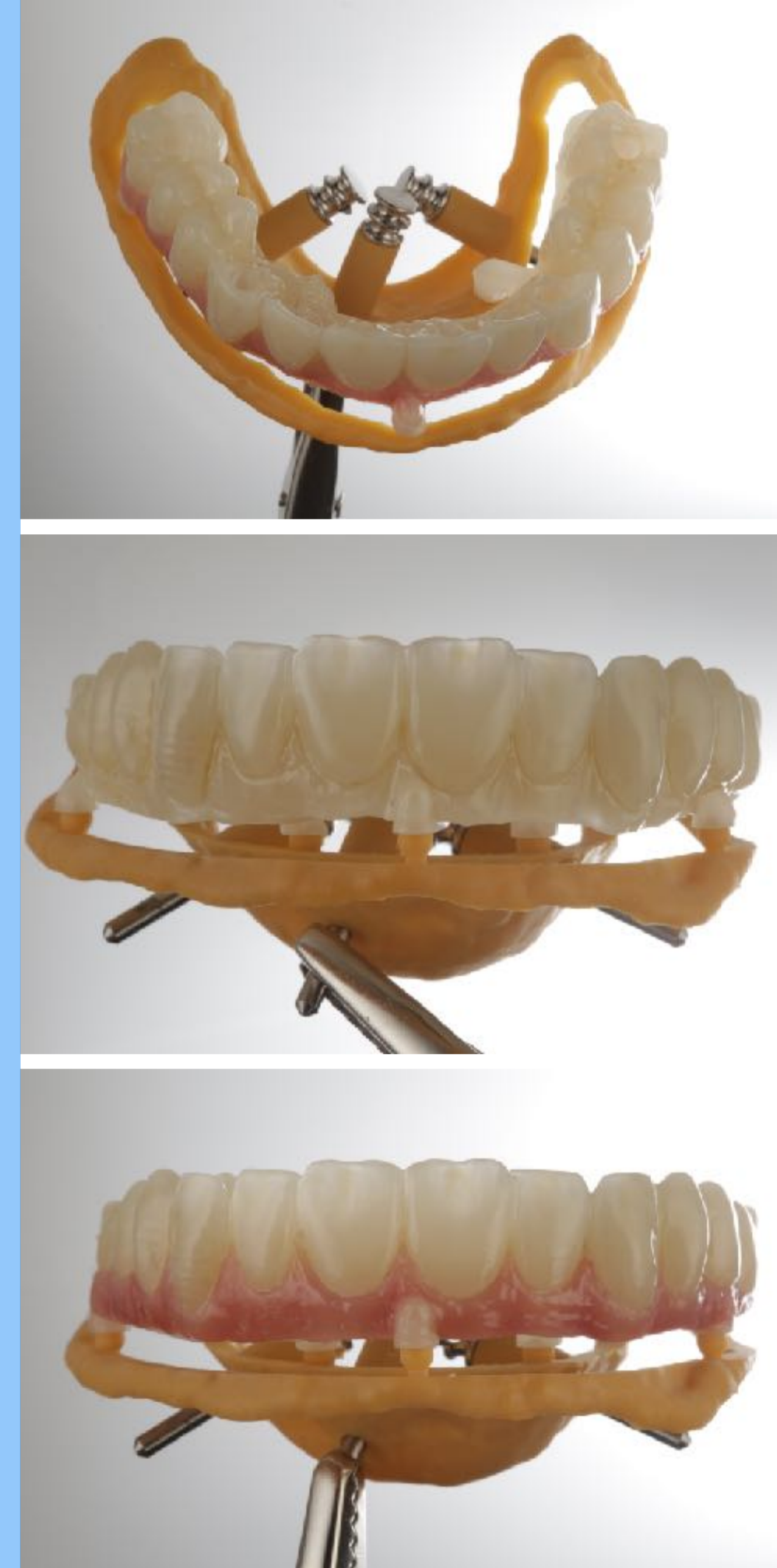


MOCK SETUP UP

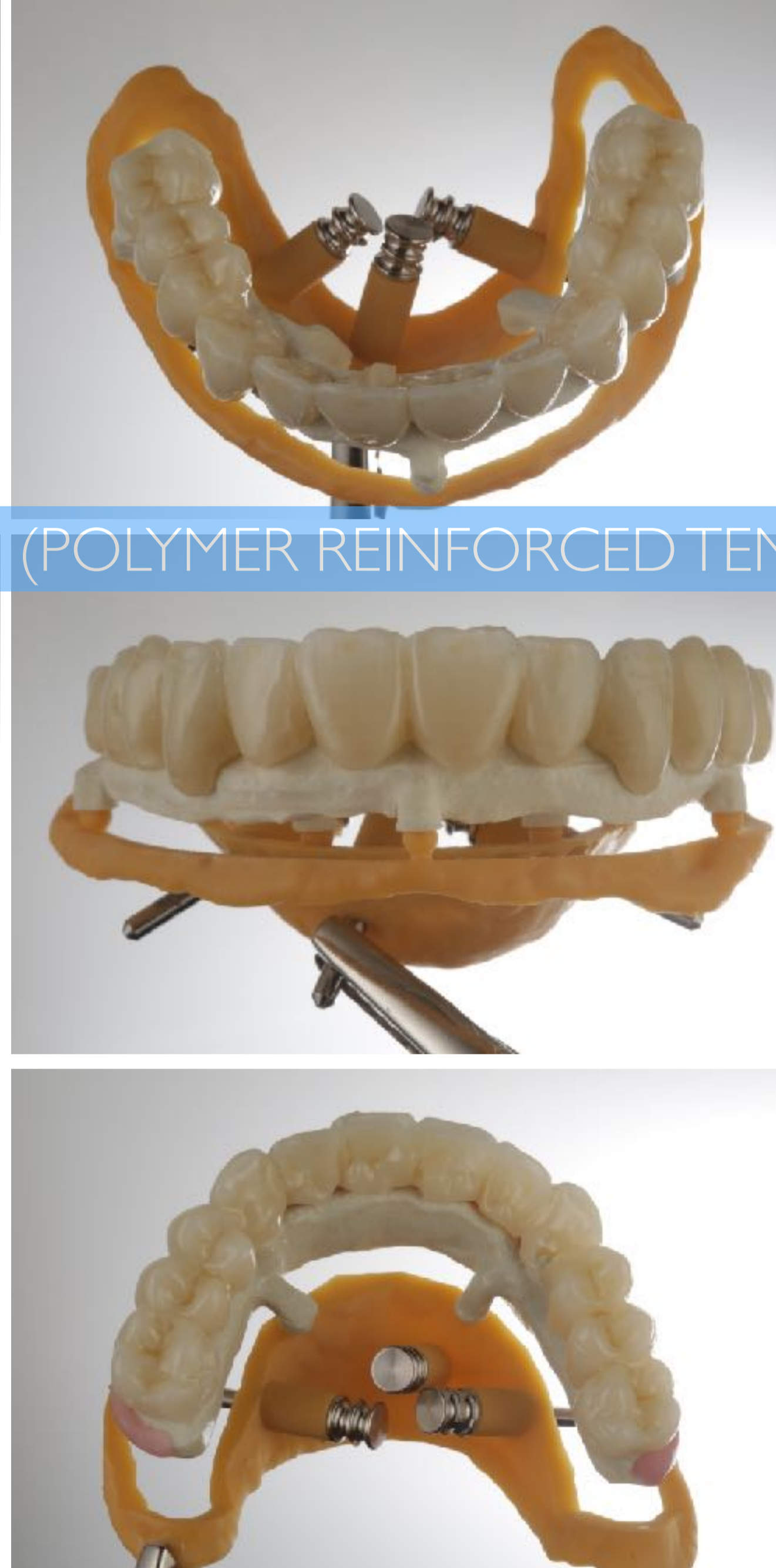


ALL-TO-ONE

TRADICIONAL PMMA TEMPS



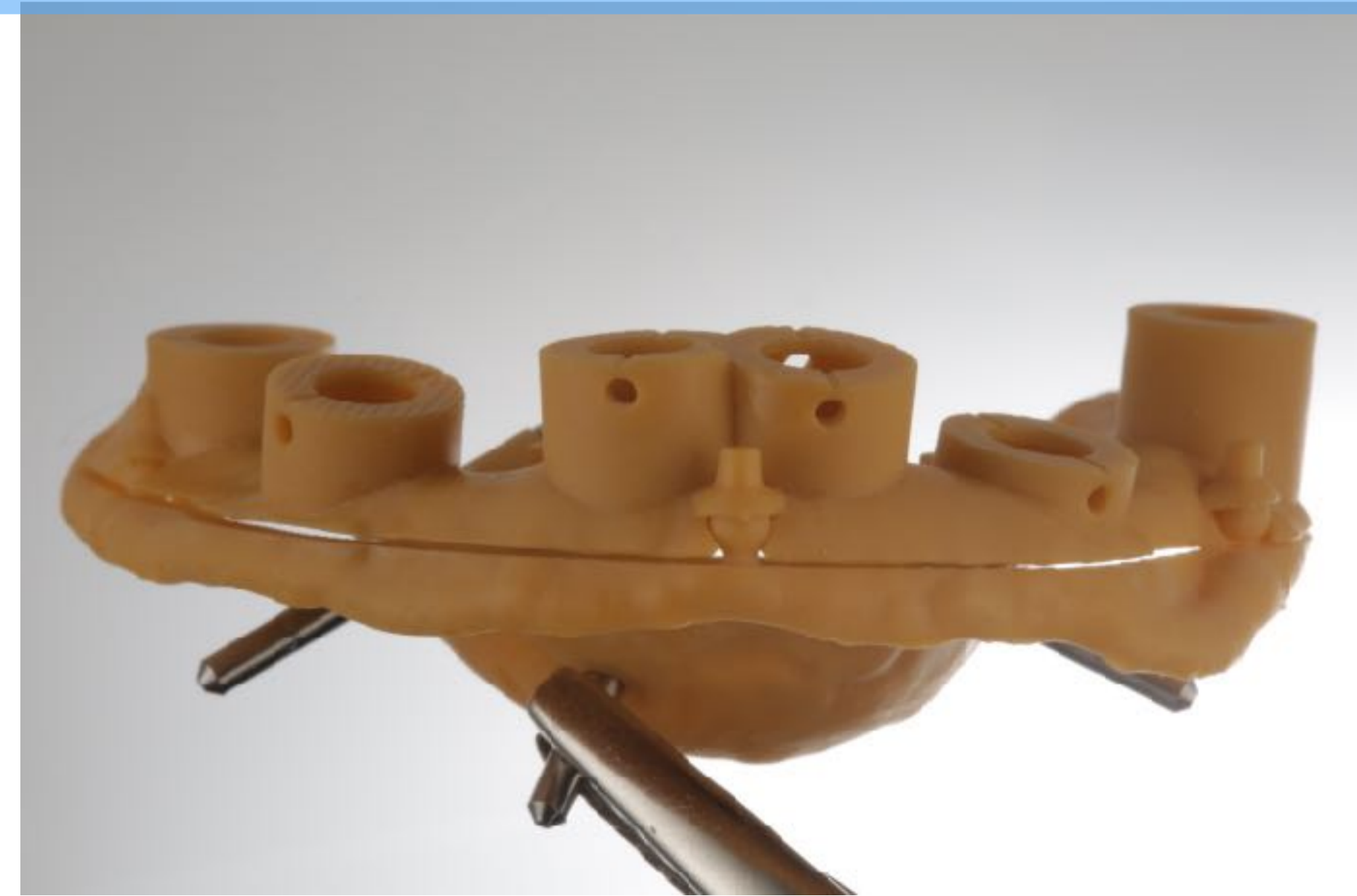
ALL-TO-ONE



LONG TERM AESTHETIC LOADING (POLYMER REINFORCED TEMPS)



FOR SURGERY GUIDE or FREE HAND



ALL-TO-ONE

Support guide with fixation Pins (mandatory)

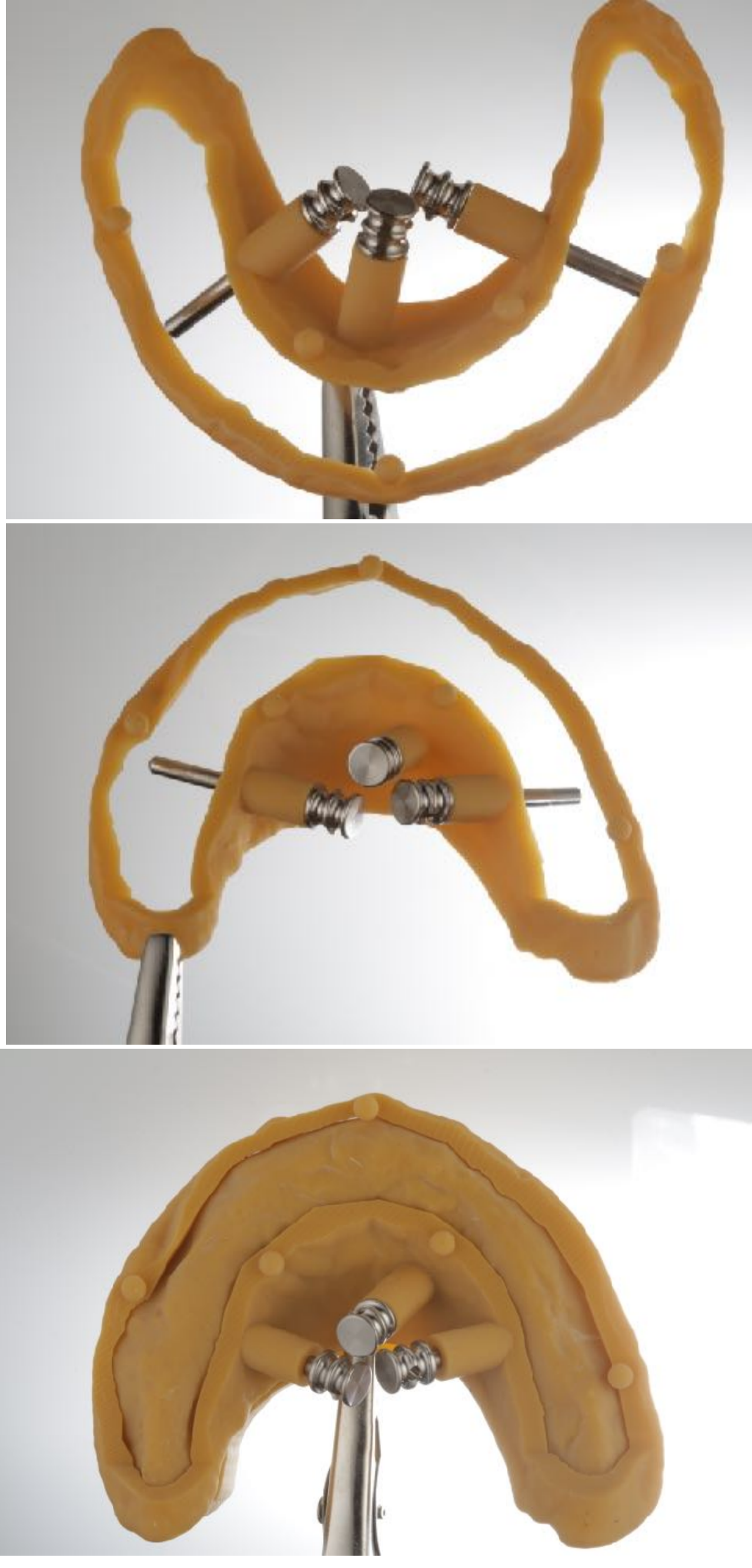


This guide is vital!
Stays from Start to
final
temporization

CBCCT Recommended to avoid vital structures

Define bucal or palatal pins (depending of Grafting o free close sure Flap technique OR AVOIDING ROOTS OR IMPLANT PLANING POSITION)

ALL-TO-ONE



WE GUIDE FROM
BEFORE EXTRACTIONS TO TEMPORARIZATION

Support guide with fixation Pins (mandatory)



Facial pins or lingual pins DENTULOS OR EDENTULOS

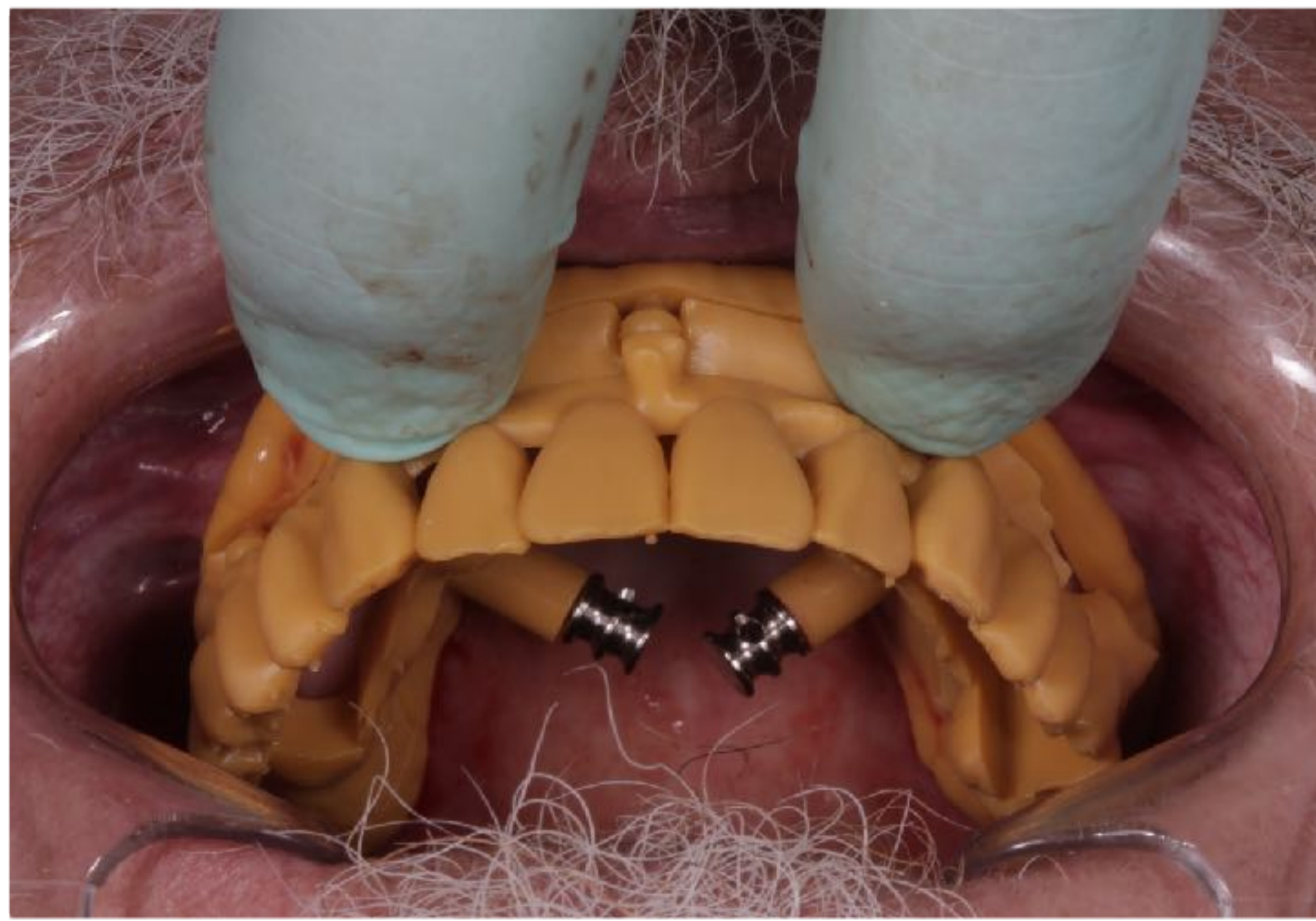
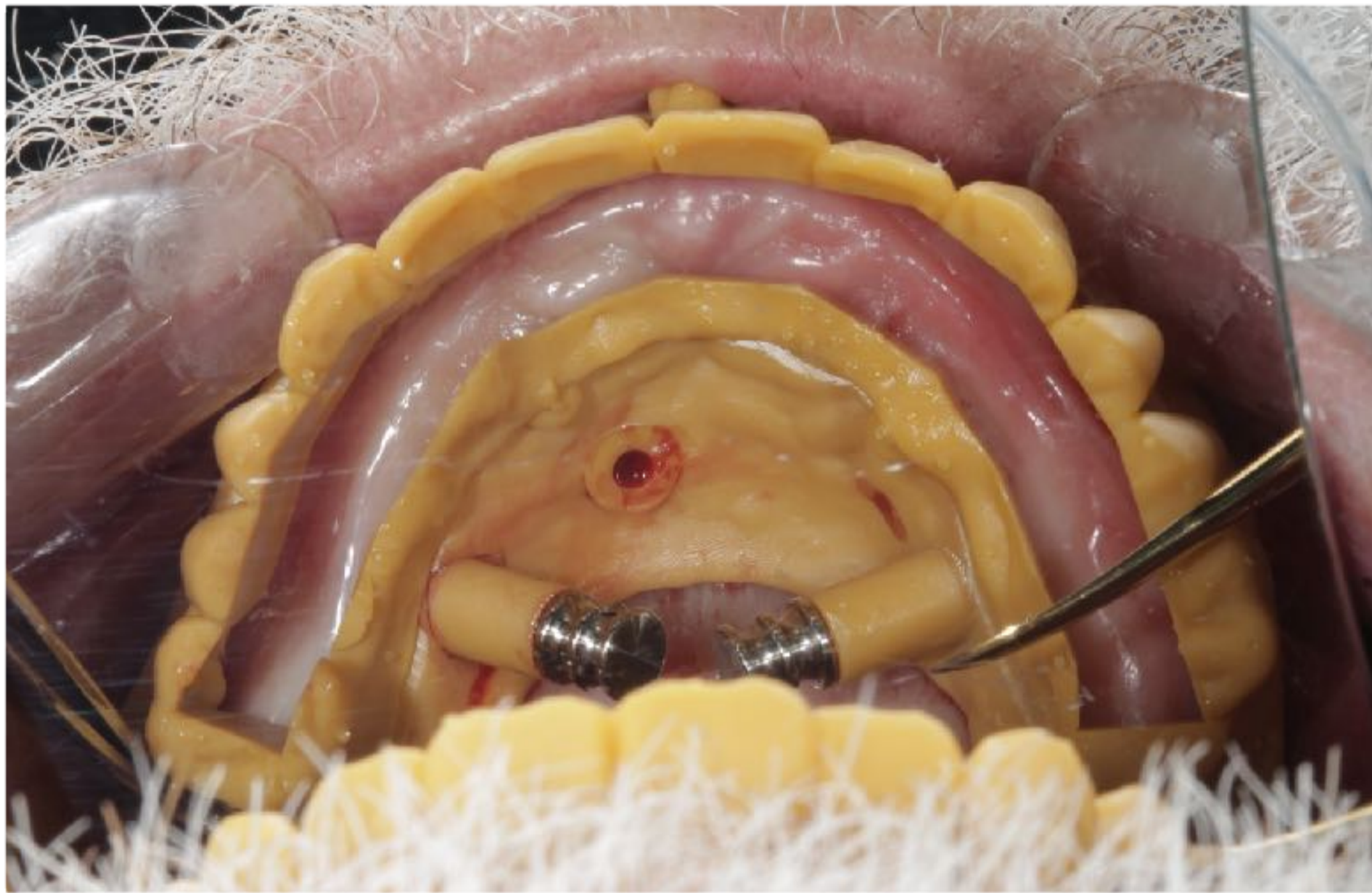
CBCCT Recommended to avoid vital structures

Define bucal or palatal pins (depending of Grafting o free close sure Flap technique OR AVOIDING ROOTS OR IMPLANT PLANING POSITION

ALL-TO-ONE



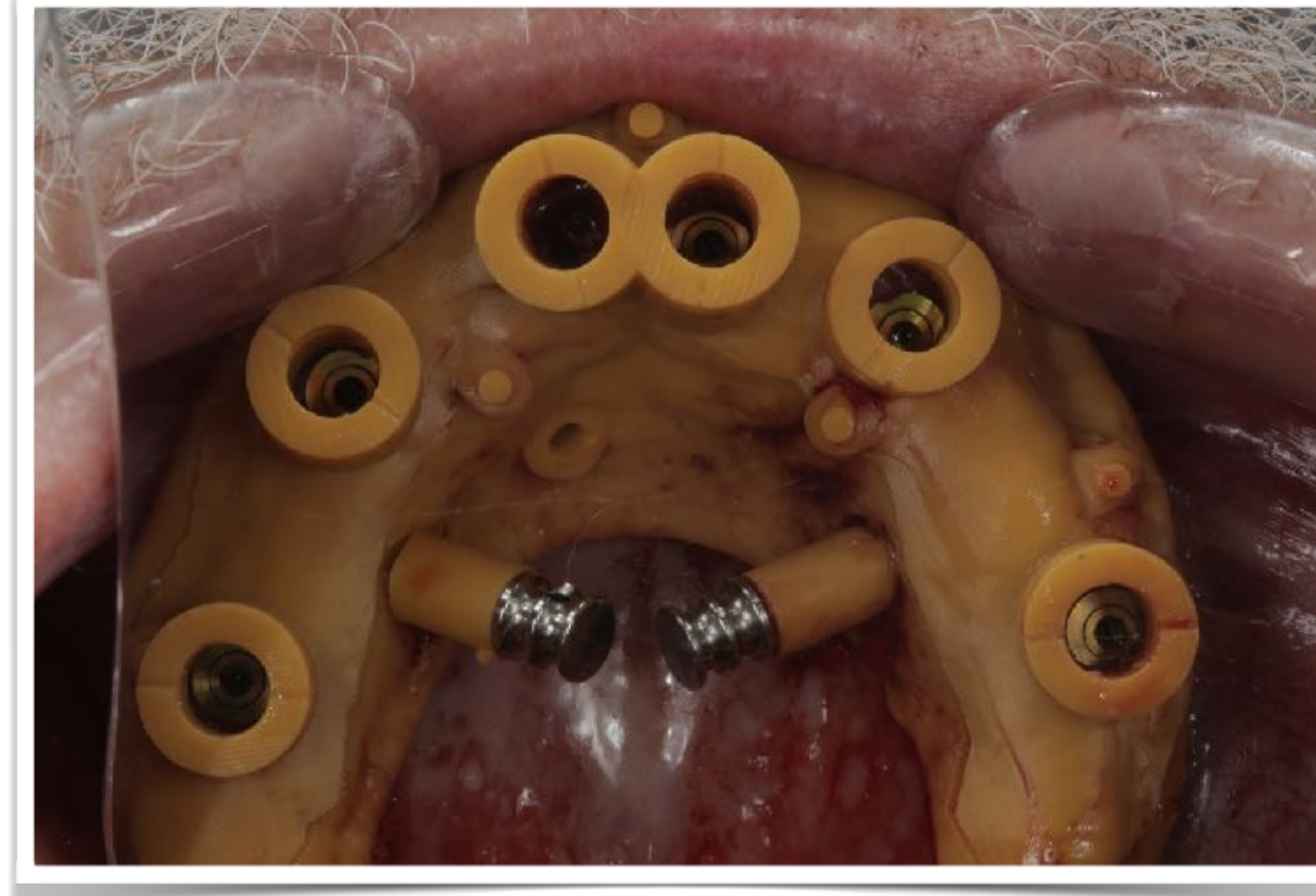
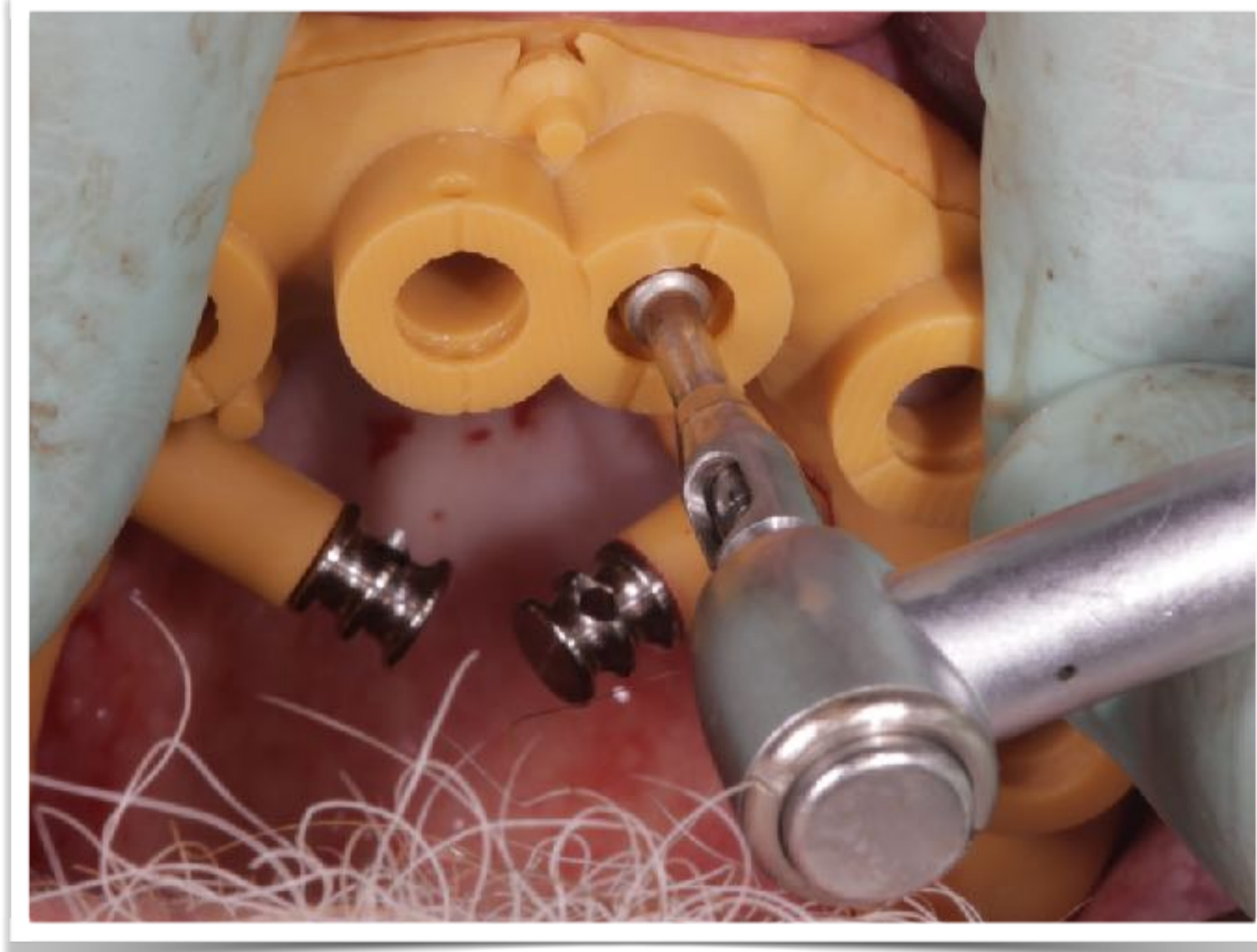
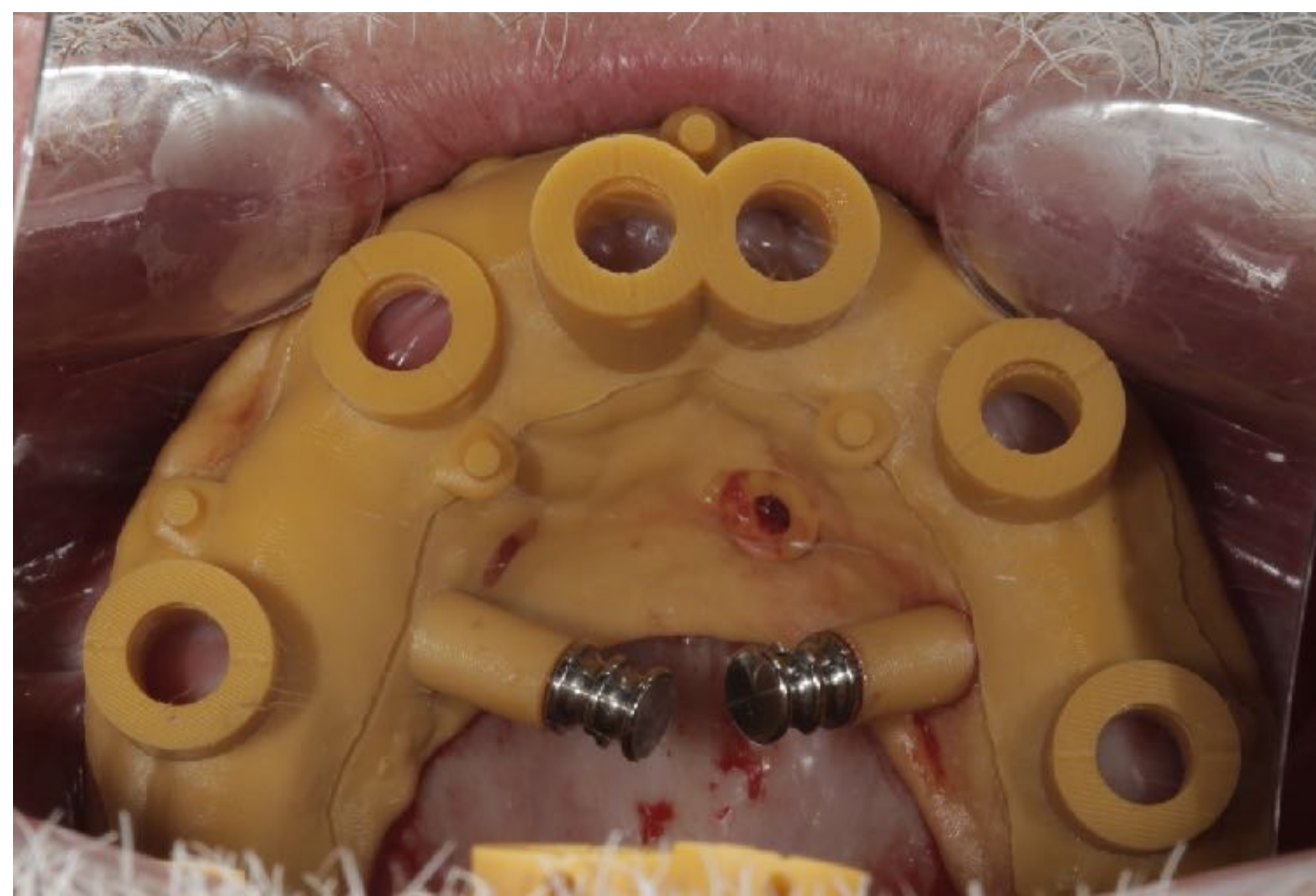
Free Hand surgical guide with tooth shape



CBCCT Recommended to avoid vital structures

THIS GUIDE AND THE OTHERS SEAT ON TOP OF SUPORT GUIDE WITH FIXATION PINS

IMPLANT SURGERY GUIDE



CBCCT Mandatory (and team-viewer review with surgeon

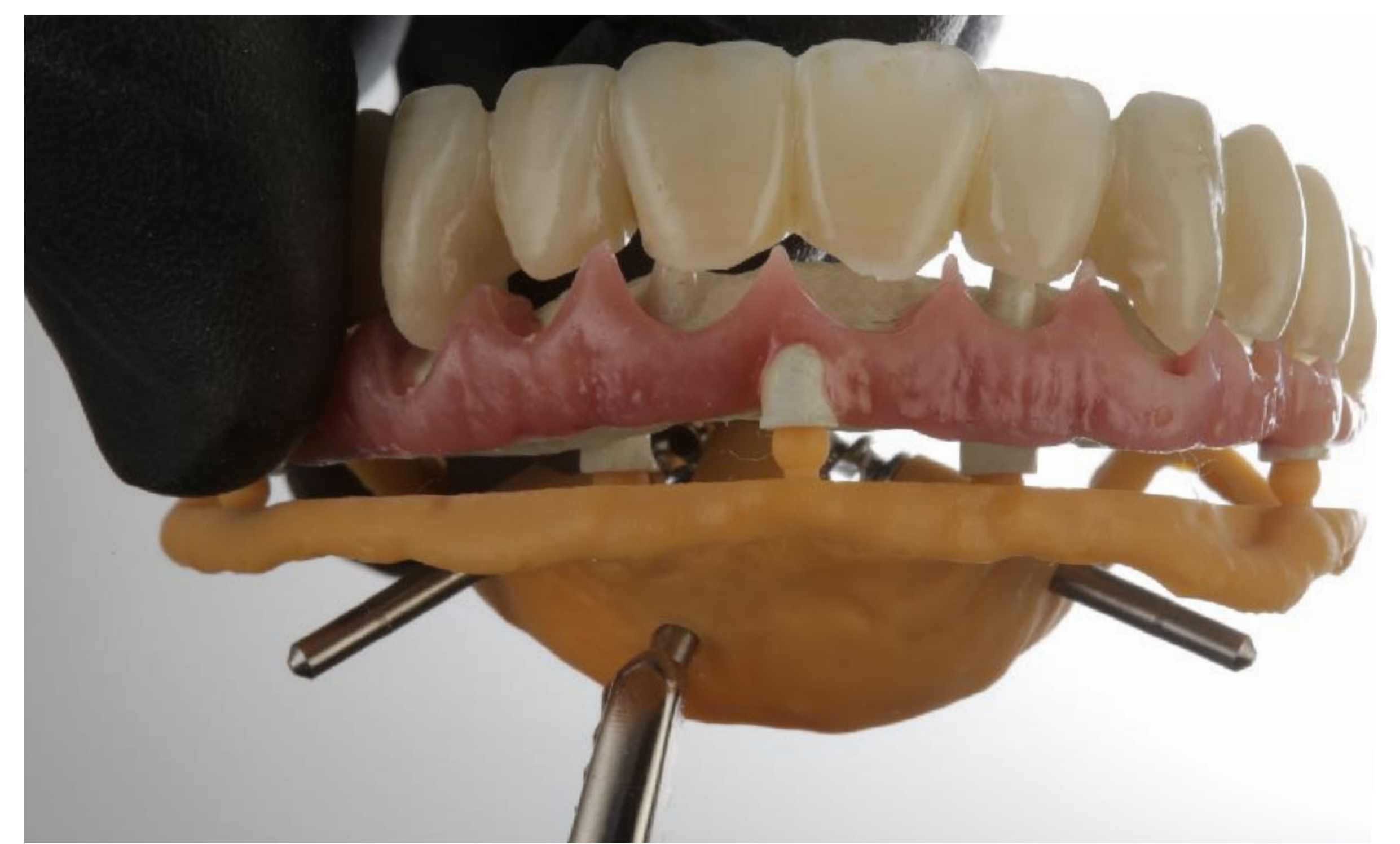
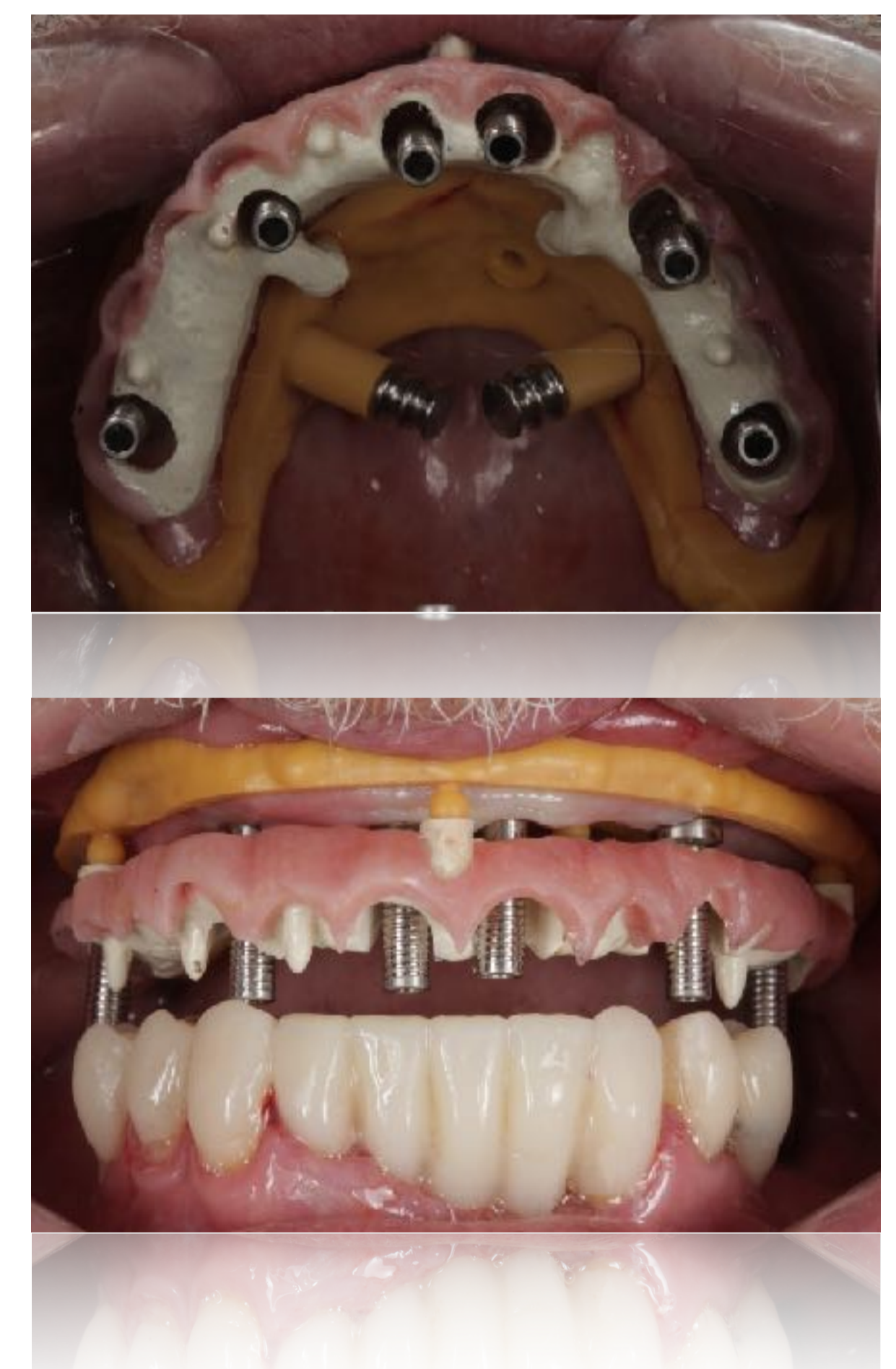
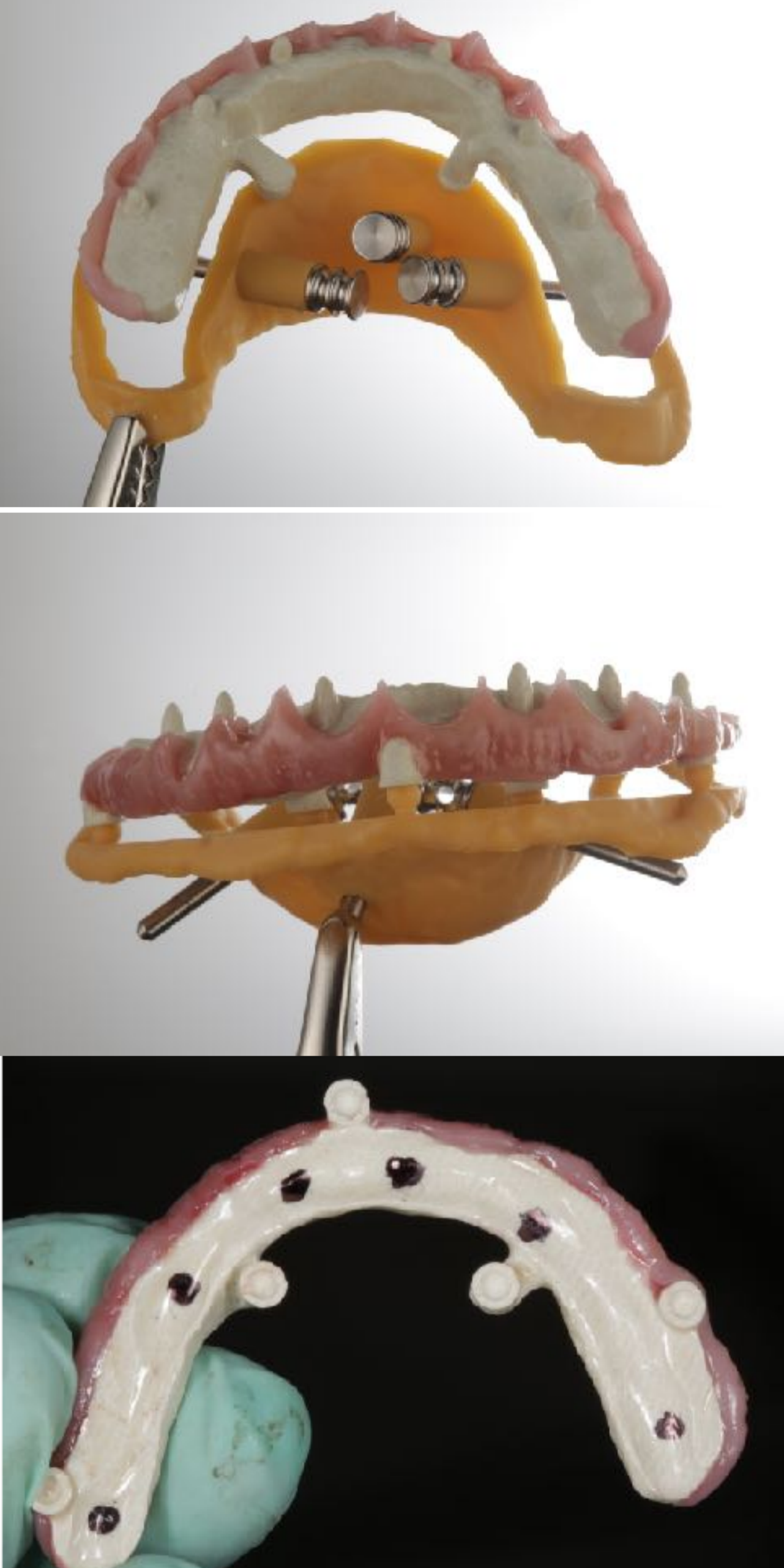
THIS GUIDE AND THE OTHERS SEAT ON TOP OF SUPORT GUIDE WITH FIXATION PINS

ALL-TO-ONE



LONG TERM AESTHETIC LOADING (POLYMER REINFORCED TEMPS)

ALL-TO-ONE



THIS REINFORSMENT SEAT ON TOP OF SUPORT GUIDE WITH FIXATION PINS