



A QUARTERLY EMAIL NEWSLETTER

JUNE 2021 • ISSUE 2 • VOLUME 1



Welcoming New Faces

We're excited to welcome some new faces. Dave Christensen is now our go-to-guy for all things construction! As our Construction Supervisor, you'll find Dave out on the job site right alongside our volunteers, pounding nails and putting up walls! In the off season, he will work with our construction committee to draft our 2022 build plans. If you'd like to help welcome Dave by joining the committee or building on site, email community.outreach@scvhabitat.org and Jessie will help find a spot for you! And we are proud to welcome our first intern at SCVHFH in a while. Maddie Eastin, who will be a sophomore at University of Wisconsin – River Falls, is a summer research assistant, focusing on nonprofit management and helping us build resources to support our operations!

Thanks to all of the great people who make up our team at SCVHFH. We've got lots of good work to do!



A QUARTERLY EMAIL NEWSLETTER

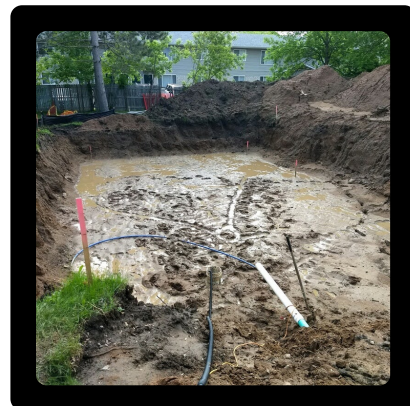
JUNE 2021 • ISSUE 2 • VOLUME 1



Welcoming New Faces

We're excited to welcome some new faces. Dave Christensen is now our go-to-guy for all things construction! As our Construction Supervisor, you'll find Dave out on the job site right alongside our volunteers, pounding nails and putting up walls! In the off season, he will work with our construction committee to draft our 2022 build plans. If you'd like to help welcome Dave by joining the committee or building on site, email community.outreach@scvhabitat.org and Jessie will help find a spot for you! And we are proud to welcome our first intern at SCVHFH in a while. Maddie Eastin, who will be a sophomore at University of Wisconsin – River Falls, is a summer research assistant, focusing on nonprofit management and helping us build resources to support our operations!

Thanks to all of the great people who make up our team at SCVHFH. We've got lots of good work to do!



Board Grows by TWO

Our board just grew by two. Tabitha Jackson and Jim Ellis have accepted invitations for board service and take on their new roles at the start of our 2022 fiscal year July 1. Tabitha is a financial advisor at First Command and will join the family support committee, where she will help our Habitat families with financial education and planning. Jim Ellis, who is retired from Imation, will join the finance committee where he will help build strategic partnerships to bring our vision further into the business community.



Always seeking Volunteers

As we begin the build in New Richmond and plan for a Neighborhood Revitalization project this September in River Falls, we could use a little more help. And we've got plans in River Falls to help with a neighborhood revitalization project in September. We're going to ask you again to pitch in where you can. Follow the link to see where you can help fill in the gap

<https://calendar.google.com/calendar/u/0?cid=c3Rjcm9peHZhbGxleWhhYml0YXRhZ21haWwuY29t>

In Loving Memory

A very special thank you to the friends and family of Paul Engebretson, many of whom are part of our long-standing “Tuesday Crew” of construction volunteers who worked alongside Paul building our Habitat homes. Paul passed away this Spring. Our hearts go out to his wife Vi, and to everyone who knew Paul. Vi asked that memorials be made to something special in memory of Paul at SCVHFH. With the generosity of so many, we were able to purchase a very long list of tools that truly needed updating, including one of Paul’s favorite oscillating saws. Thank you all, with our blessings to everyone.



Lots Needed

The pandemic housing boom means the need for affordable housing continues to grow. As we accept the challenge to do more for the communities we serve, we really need more land to meet our 2022 (and beyond) building goals. SCVHFH is looking to partner with municipalities, developers or landowners willing to donate or sell affordable lots to help us plan our future and continue our vision of a world where everyone can afford to own a home. And gifted real estate can greatly benefit your taxes. An outright gift may allow you to deduct fair market value and avoid capital gains taxes. There are other ways donated real estate is considered a charitable contribution too. If you know of available land, or folks willing to help share their inventory of properties, please help connect them with Kristie at 715-350-8575 or executivedirector@scvhabitat.org



From the ED's Desk

In a year that has been so full of change, there are a few things I'd like to share as we head into our Fiscal Year 2022 in July.

Our vision and our mission: affordable housing. Affordable homes change the wealth dynamic for generations of people. It means basics like food security, healthcare and education can become everyday parts of life for those who have experienced uncertainty. COVID-19 has sent more people to do more from their homes; living, learning, working safely as the world navigated the unknown virus. That demand has meant the cost of home is even greater. Higher priced materials and increasing land costs have changed the dynamic of affordability. It is our shared hope that the work that our committees, board members, volunteers, sponsors, and partners do results in helping people begin a path to successful futures. If you are struggling with your mortgage or utility bills right now, or food needs or other necessities, there are some resources to help. Know that our communities are here for you. And start by looking here: <https://scvhabitat.org/resources> It is in looking back, that we can build hope for the future. We are thankful for first responders and medical professionals, and teachers and community leaders and all the heroes who have made this year a little brighter. And we all send prayers of comfort to those who have lost someone.

Together, we are moving forward. Here's to great things ahead!

My very best,
Kristie

Think you can't afford to own a home?
THINK AGAIN!



Family Partner Criteria



Does your current housing not meet your needs?



Does your income fall within the ranges of the chart to the right?



Are you willing to work with volunteers to build your house?

Family Size	Gross Monthly Income
1	\$1838—\$3063
2	\$2100—\$3500
3	\$2363—\$3938
4	\$2621—\$4371
5	\$2833—\$4721
6	\$3042—\$5071
7	\$3343—\$5421
8	\$3722—\$5771

If you answered YES to all of these questions
contact us for an application or scan code below today!



749 Ryan Drive, Hudson, WI 54016

PH: 715-350-8575

EMAIL: info@scvhabitat.org

<https://scvhabitat.org>

