



**NOW
ACCEPTING
APPLICATIONS
FIRST REVIEW
MAY 15**



Our Habitat for Humanity **Home for a Healthcare Worker** at Post Mill Flats in Baldwin is an opportunity for healthcare workers to afford a safe place to start their days. For this specially approved project, you must work in the healthcare field and fit the following criteria:

PARTNERSHIP CRITERIA

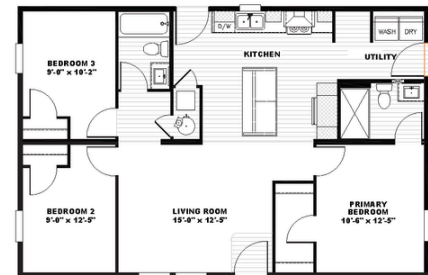
- ✔ Your current housing does not meet your needs.
- ✔ You must be willing to partner with volunteers to help build your home.
- ✔ Your income must fall within the range below. You will pay an affordable mortgage.

Family Size Gross Monthly Income

Family Size	Gross Monthly Income
1	\$2,704 - \$6,079
2	\$3,091 - \$6,950
3	\$3,477 - \$7,816
4	\$3,862 - \$8,683
5	\$4,170 - \$9,379
6	\$4,479 - \$10,075
7	\$4,512 - \$10,770
8	\$5,233 - \$11,462

**2025 HUD Income Limits*

To learn more about our program and financial education about home ownership, visit scvhabitat.org/open-applications



scvhabitat.org/open-applications