

To: All Distributors
Regional Sales Managers and National Sales Manager

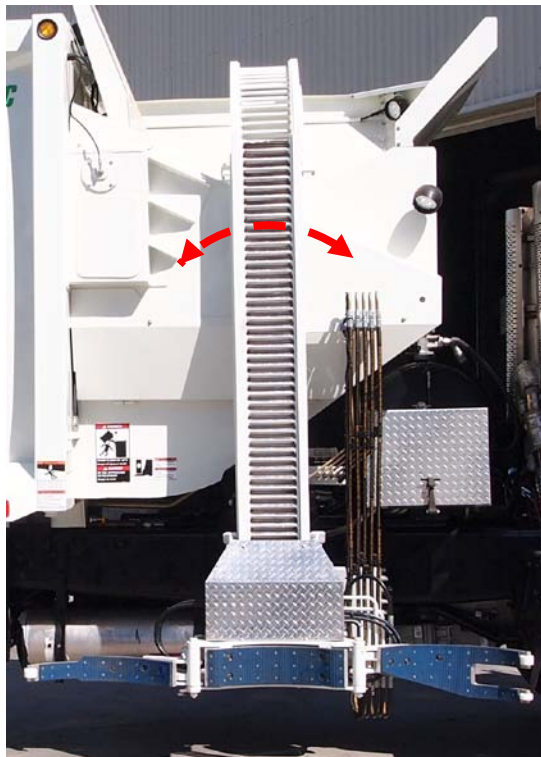
From: Technical Support

Model: Alley Gator with Zero Radius Arm

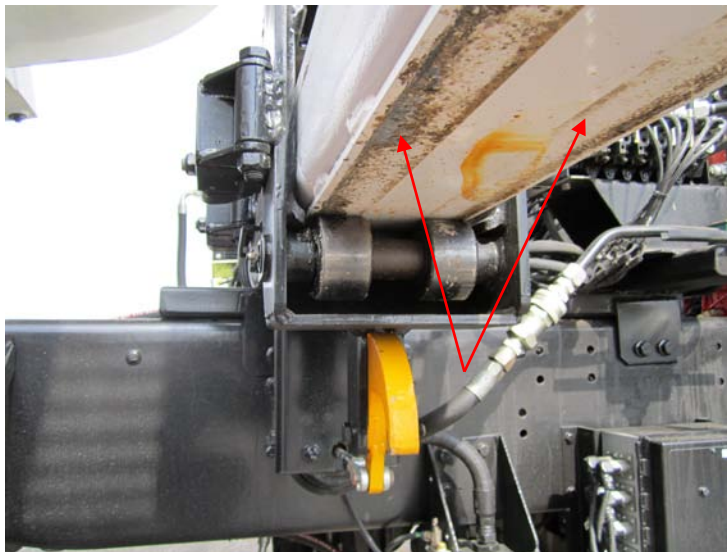
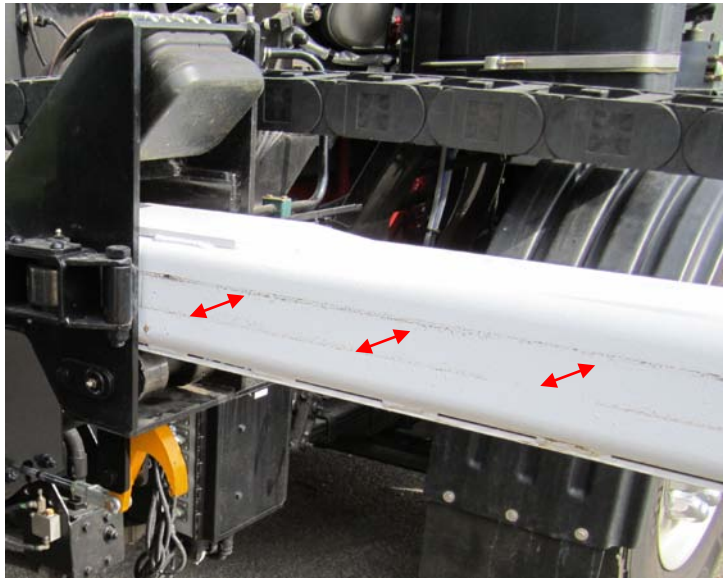
Subject: Arm Maintenance

The Alley Gator Zero Radius arm must be inspected weekly for arm sway (forward/rearward rocking of the arm mast), wearing of the arm slide tube and rollers, condition and adjustment of the arm stop bumper pads, and structural integrity. The following items are to be checked during the weekly inspection:

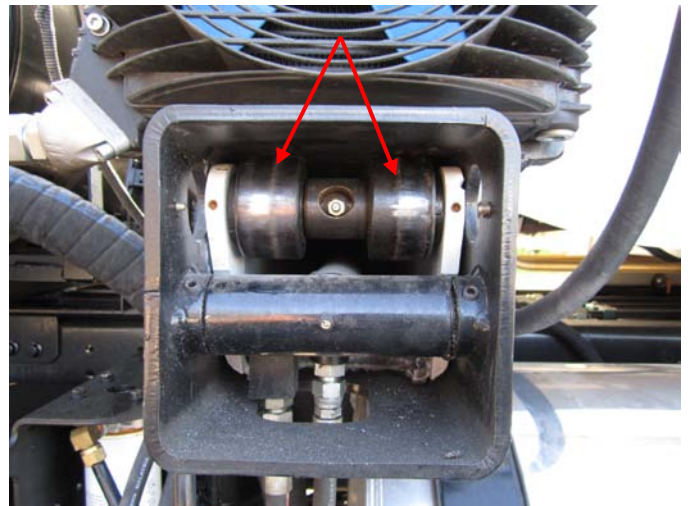
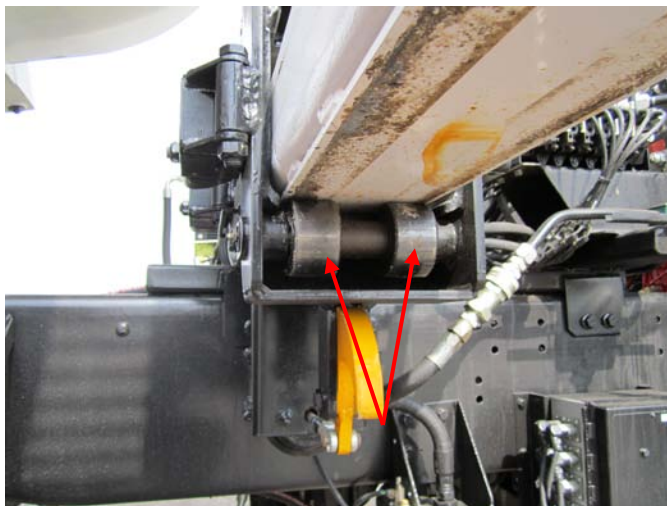
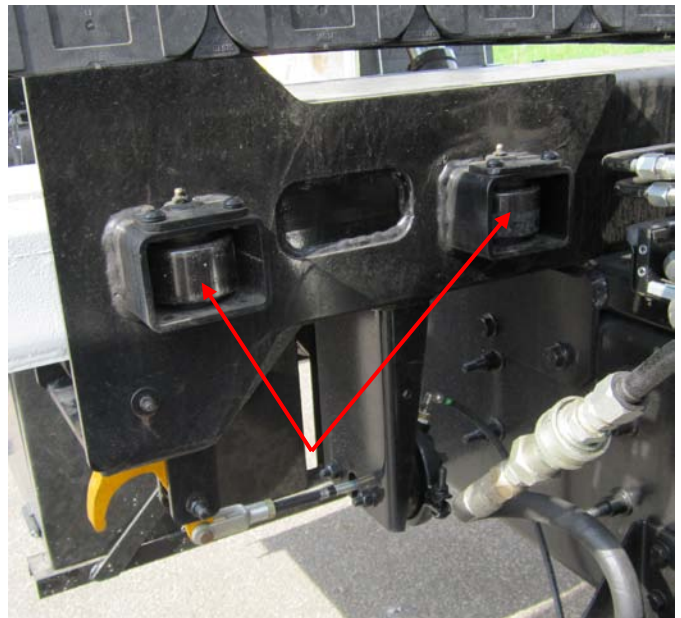
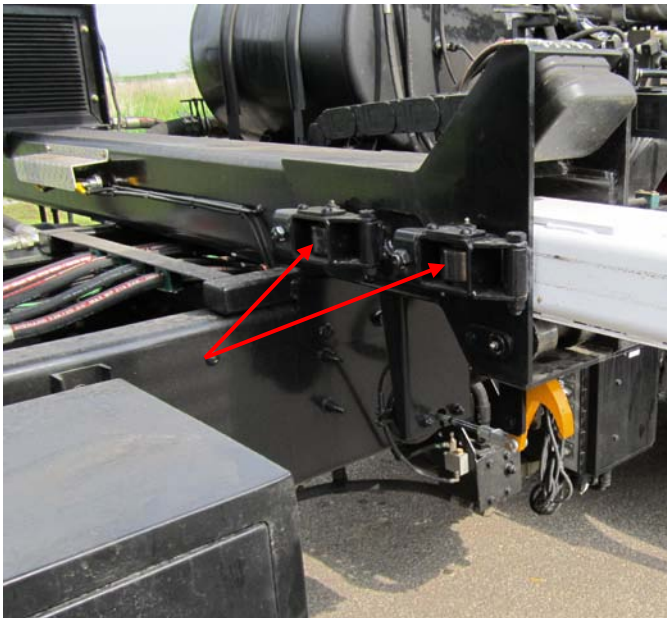
- **Arm sway:** With the arm out one to two inches (1" – 2") from the home (parked) position, check for sway by pushing the arm mast forward and rearward. If the arm sways more than one-half inch (1/2") in either direction at the upper arm bumper stop, the slide rollers must be adjusted – refer to the adjustment procedure included.



- **Arm slide tube:** Extend the arm fully, then clean and inspect the arm tube sides and bottom. The roller tracking areas must be free of dirt, grease and oil, and the roller tracking area must not be worn more than three thirty-seconds of an inch ($3/32''$) at its deepest area. If any area of a roller track on the slide tube sides is worn deeper than three thirty-seconds of an inch ($3/32''$), the arm slide/mast weldment must be replaced. If any area of a roller track on the slide tube bottom is worn deeper than three thirty-seconds of an inch ($3/32''$), the roller wear plate must be replaced.



- **Slide rollers, eight (8) total:** Fully clean and inspect the outer face of all rollers. Check the complete roller face by placing the arm slide in multiple positions; they must be free of dirt, grease and oil, with no cracks or flat spots evident. The roller must turn without any wobble or binding during arm travel. Replace any roller exhibiting wear or damage. Lubricate the rollers, paying particular attention to not over-grease them; grease until lubricant is just visible between the roller case and the inner race.



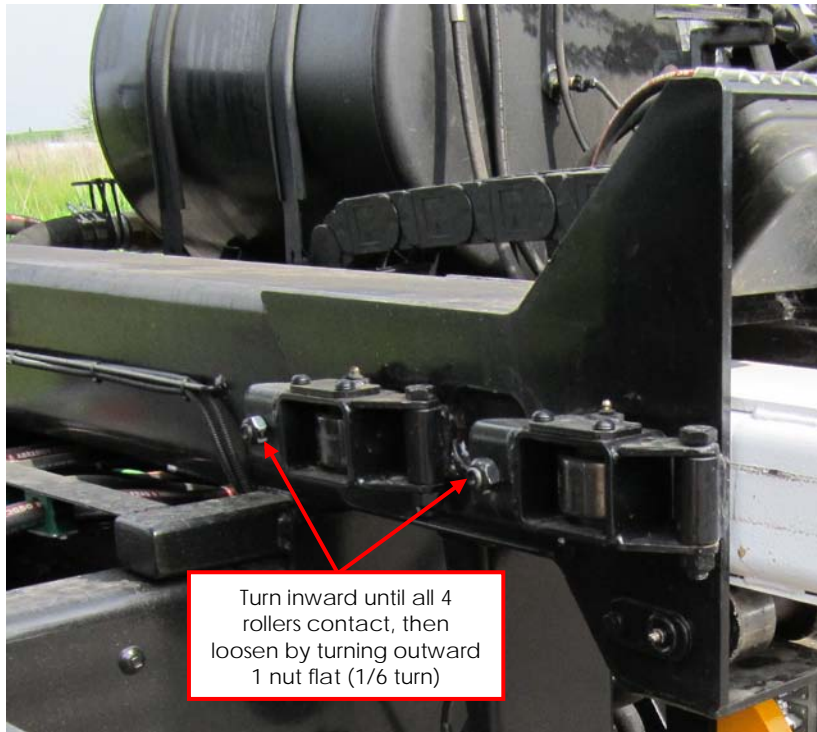
- **Arm stop bumper pads:** Check both the upper and lower arm stop bumper pads for wear, cracking or damage; replaces as necessary. With the arm fully retracted, both arm stop bumper pads must be compressed at least one-quarter inch (1/4"); the pads may be adjusted by shimming.



- **Structural integrity:** Check all metal surfaces and welds on the arm slide/mast weldment for damage or cracking. Also check all metal surfaces and welds on the outer slide tube/base frame weldment; repair as necessary. Check the fasteners that secure the outer slide tube/base weldment to the chassis frame; ensure that they are in place and tightened to 375 lb-ft.

Roller Adjustment Procedure

- Retract the arm fully; turn off the engine and perform lockout/tagout procedures.
- Turn the roller adjustment nuts inward (clockwise) until all four (4) side rollers contact the forward and rearward arm slide tube sides.
- Loosen both the adjustment nuts by turning outward (counter-clockwise) one (1) nut flat (1/6 turn).
- Operate the arm fully out & in several times, and recheck for arm sway.



If you have any queries or require any further information please contact the Labrie Service Department at (800) 231-2771.