



Parts Manual

Pendpac Alley-Gator FE

PENDPAC
1700 N. Main
Fairview Oklahoma 73737
1-800-749-3747

SERIAL NUMBERS:

BODY: _____

LIFT: _____

MFG. DATE: _____

PENDPAC

0751-055-01-2007

WARRANTY

There must be in the file of Pendpac within ten (10) days after delivery of an Alley Gator Unit (The "Product"), a valid warranty registration card which the customer should fill out immediately after the "Product" is sold. The warranty card is enclosed in the Parts Manual. Pendpac will not be obligated to warranty the unit unless this registration is on file.

Pendpac warrants the "Product" sold to be free from defects in material and workmanship under normal use and service for six (6) months after the date of delivery to the initial user, subject to the following provisions:

I. This warranty is limited to the repair or replacement of parts such as shall appear to an PENDPAC representative upon inspection to have been defective in material or workmanship. A Warranty Authorization number must be issued by a PENDPAC representative before warranty work is to proceed. (Failure to get authorization may result in non-reimbursement.) There must be a warranty claim form (supplied by Pendpac) properly filled out and mailed to Pendpac within thirty (30) days of the date of failure. Parts needing to be returned must have a return authorization number and must be returned to Pendpac within thirty (30) days for inspection before credit can be given. Warranty parts shall be shipped to the factory pre-paid motor freight or standard U.P.S. Warranty parts will be shipped from the factory motor freight or standard U.P.S.

II. Warranty with respect to optional equipment is subject to warranty by their respective manufacturer. Such warranties shall be handled direct through the respective manufacturer or their distributor.

This warranty is in lieu of and excludes all other representations or warranties expressed or implied and does not apply where alterations or structural repair has been made to the "Product" without written authorization by a Pendpac representative. Pendpac's obligation under this warranty does not apply in case of any alterations, accidents, misuse, abuse, neglect, or if maintained or operated in other manner than recommended or approved in the PENDPAC Owners Manual

THERE IS NO WARRANTY OF MERCHANTABILITY OR FITNESS FOR ANY PARTICULAR PURPOSE NOR IS THERE ANY OTHER WARRANTY, EXPRESS OR IMPLIED, EXCEPT AS SPECIFICALLY STATED HERIN. PENDPAC SHALL IN NO EVENT BE LIABLE FOR ANY SPECIAL, INDIRECT, OR CONSEQUENTIAL DAMAGES OR CLAIMS OF ANY THIRD PARTY AGAINST CUSTOMER.

IMPROVEMENTS

Pendpac reserves the right to make changes in design and improvements whenever it is believed the efficiency of the products will be improved, but without incurring any obligation to incorporate such improvements in any product which has been shipped or is in service.



1700 North Main
Fairview, Oklahoma 73737

WARRANTY REGISTRATION FORM

NOTE: COMPLETE AND RETURN WITHIN TEN (10) DAYS OF DELIVERY TO VALIDATE WARRANTY.

DEALER: _____

ADDRESS: _____

PURCHASER: _____

ADDRESS: _____

UNIT DESCRIPTION: _____

BODY MODEL NO. : _____

BODY SERIAL NO. : _____

LIFT MODEL NO. : _____

LIFT SERIAL NO. : _____

DATE PURCHASED: _____

CHASSIS VIN NO. : _____

Mail to:

Pendpac
1700 N. Main
Fairview, OK 73737-2722

TO OUR CUSTOMERS

This manual provides you with the necessary information for the proper parts ordering for your Alley Gator unit plus basic options.

If special schematics are required for the option ordered, they will be inserted in the option section as "special options".

Any questions or problems concerning the electrical or hydraulic schematic should be discussed with Pendpac's service department before changing or modifying.

IMPORTANT

The data and information listed herein is correct to the best of our knowledge and belief. Having been compiled from reliable and official information. However, we cannot assume any responsibility for possible error.

TABLE OF CONTENTS

| | |
|----------------------------|-----------|
| WARRANTY | PAGE I |
| WARRANTY REGISTRATION FORM | PAGE II |
| "TO OUR CUSTOMERS" | PAGE III |
| TABLE OF CONTENTS | PAGE IV |
| | |
| PARTS | SECTION I |
| HYDRAULICS | SECTION 2 |
| ELECTRICAL | SECTION 3 |
| AIR | SECTION 4 |
| MAINTENANCE GUIDE | SECTION 5 |
| SERVICE PARTS | SECTION 6 |
| OPTIONS | SECTION 7 |

SECTION 1

PARTS

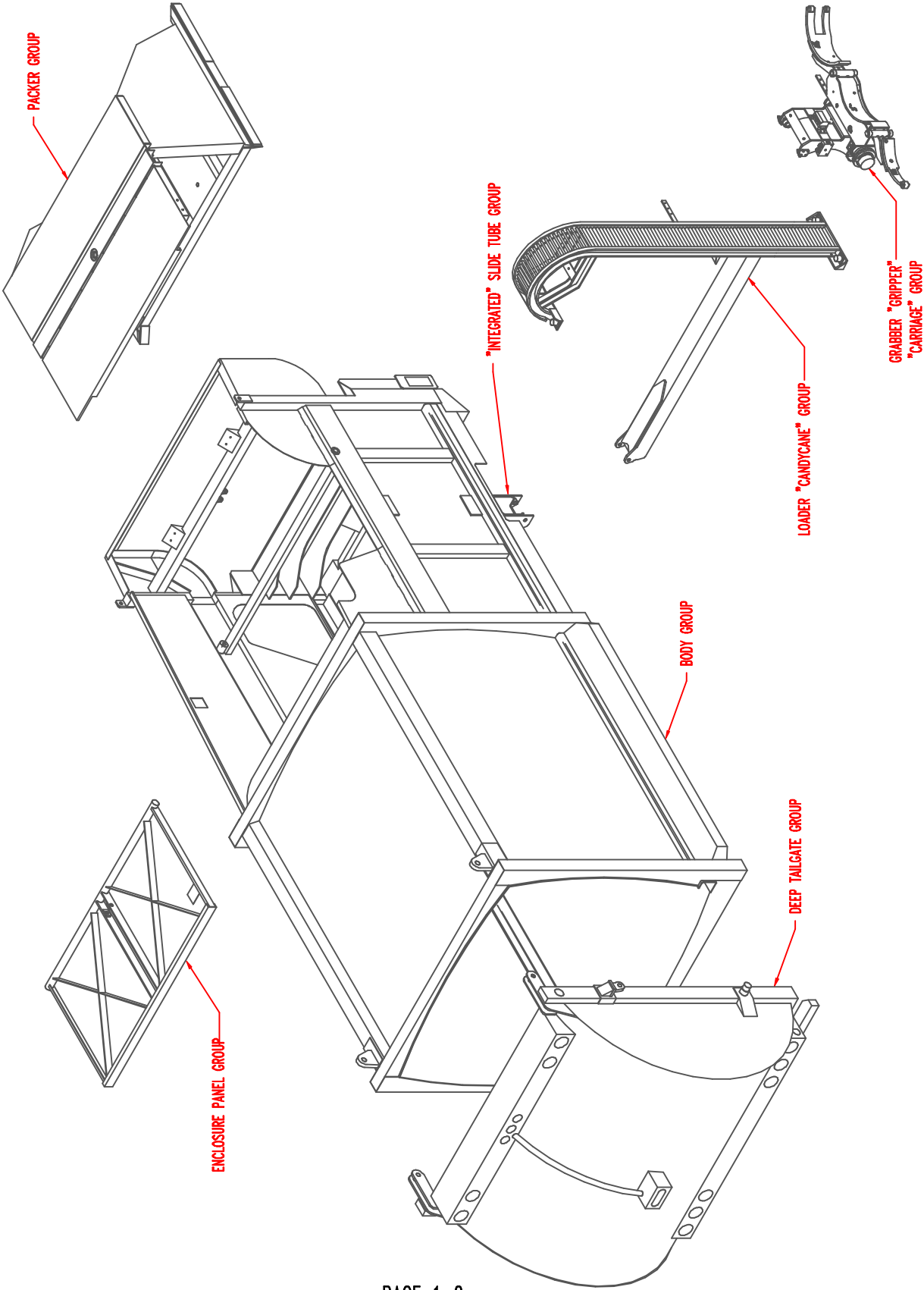
| | |
|---------------------------------|------------------|
| CAUTION | 1-1 |
| GROUP IDENTIFICATION | 1-2 |
| TAILGATE "DEEP" | 1-3 |
| BODY | 1-4, 1-5, 1-6 |
| PACKER ASSEMBLY | 1-7, 1-8 |
| LOADER ASSEMBLY | 1-9, 1-10 |
| GRABBER ASSEMBLY | 1-11, 1-12, 1-13 |
| ENCLOSURE PANEL | 1-14 |
| "INTEGRATED SLIDE TUBE ASSEMBLY | 1-15, 1-16 |
| LADDER | 1-17 |
| DECALS | 1-18 |

CAUTION

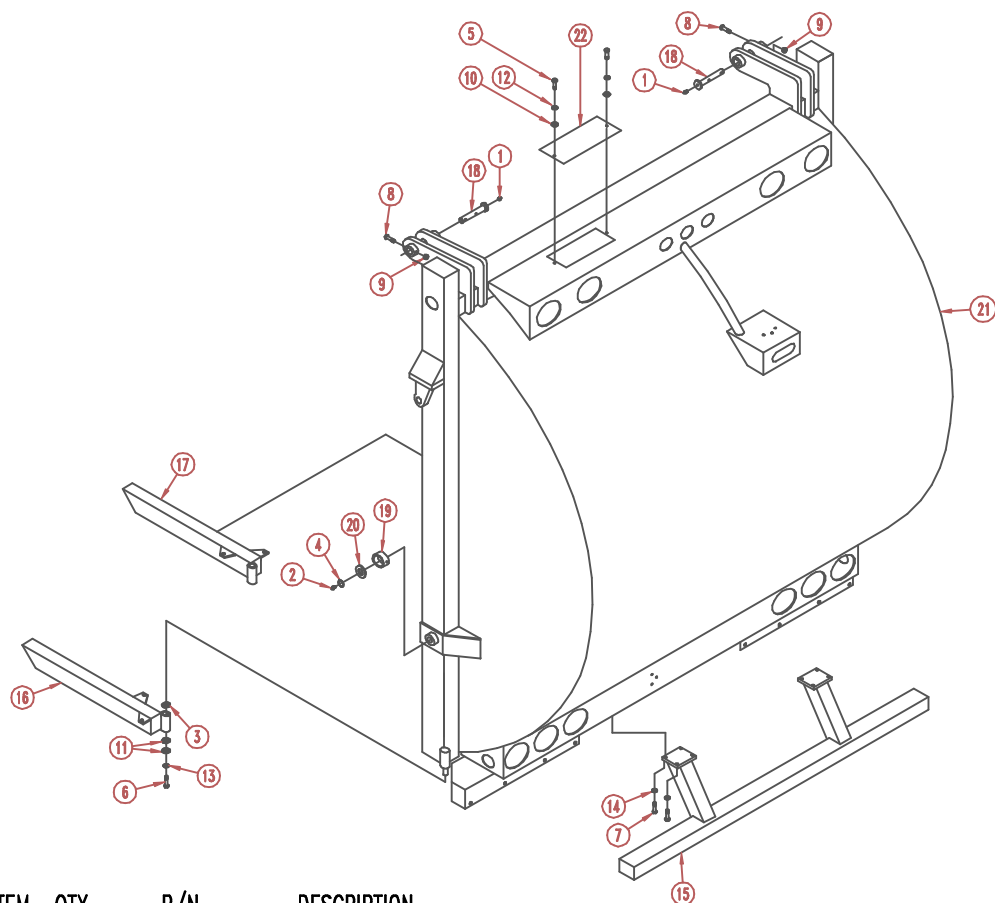
Unauthorized substitution of parts may affect the performance of this Alley Gator FE unit possibly resulting in malfunction and leading to damage to equipment or injury to personnel. Only approved replacement parts should be used in the repair of this unit.

Pendpac conducts a continuing program of product improvement that can result in changes or additions of parts. We also maintain multiple sources for many of the parts and components we purchase. When ordering replacement parts, specify the serial and model numbers of the unit being repaired so we can assure that the proper part is sent.

Alley Gator FE GROUP IDENTIFICATION

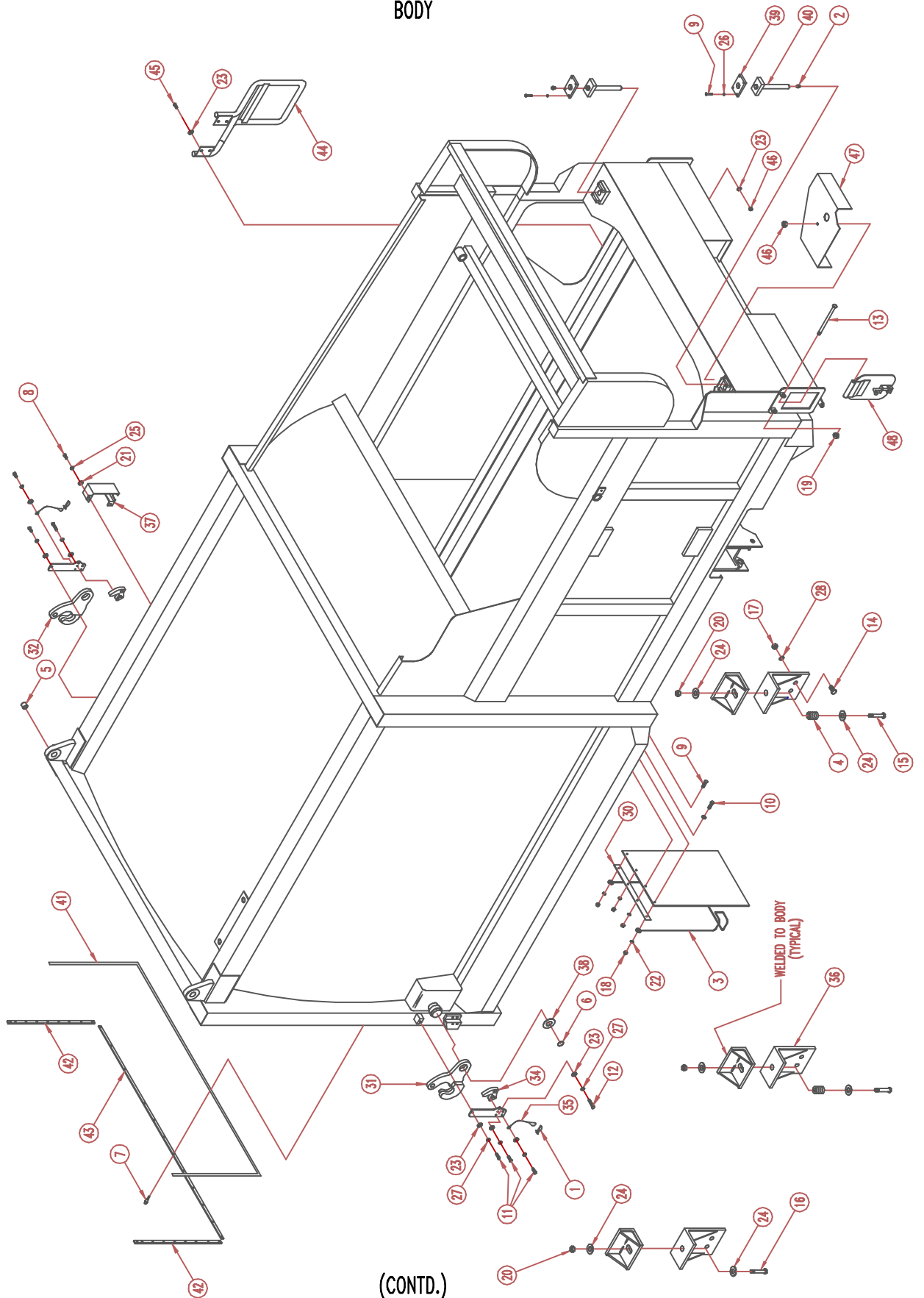


DEEP TAILGATE



| ITEM | QTY | P/N | DESCRIPTION |
|------|-----|----------|-----------------------------------|
| 1 | 2 | 0041-032 | LUBE FITTING, STRAIGHT x .25-28NF |
| 2 | 2 | 0041-046 | LUBE FITTING, .31-24NF |
| 3 | 2 | 0041-271 | MACHINE BUSHING, 10 GA. |
| 4 | 2 | 0045-112 | SNAP RING |
| 5 | 2 | 0060-036 | CAPSCREW, .25-20NC X 1.00 |
| 6 | 2 | 0060-388 | CAPSCREW, .38-16NC X 1.00 |
| 7 | 8 | 0060-741 | CAPSCREW, .50-13NC X 1.00 |
| 8 | 2 | 0064-856 | CAPSCREW, .25-20NC X 2.50 (GR.8) |
| 9 | 2 | 0065-164 | HEX NUT, .25-20NC NYLOCK |
| 10 | 2 | 0066-014 | FLATWASHER, .25 |
| 11 | 4 | 0066-220 | FENDER WASHER |
| 12 | 2 | 0067-015 | LOCKWASHER, .25 |
| 13 | 2 | 0067-034 | LOCKWASHER, .38 |
| 14 | 8 | 0067-056 | LOCKWASHER |
| 15 | 1 | 0620-313 | REMOVABLE BUMPER STRUCTURE |
| 16 | 1 | 0620-345 | L.H. SAFETY PROP STR. |
| 17 | 1 | 0620-346 | R.H. SAFETY PROP STR. |
| 18 | 2 | 0620-360 | REAR DOOR HINGE PIN |
| 19 | 2 | 0620-372 | GATE LATCH ROLLER |
| 20 | 2 | 0620-377 | FLAT BUSHING |
| 21 | 1 | 0750-912 | STRUCTURE, TAILGATE |
| 22 | 1 | 0750-917 | TAILGATE JUNCTION BOX MOUNT |

BODY



BODY
(CONTD.)

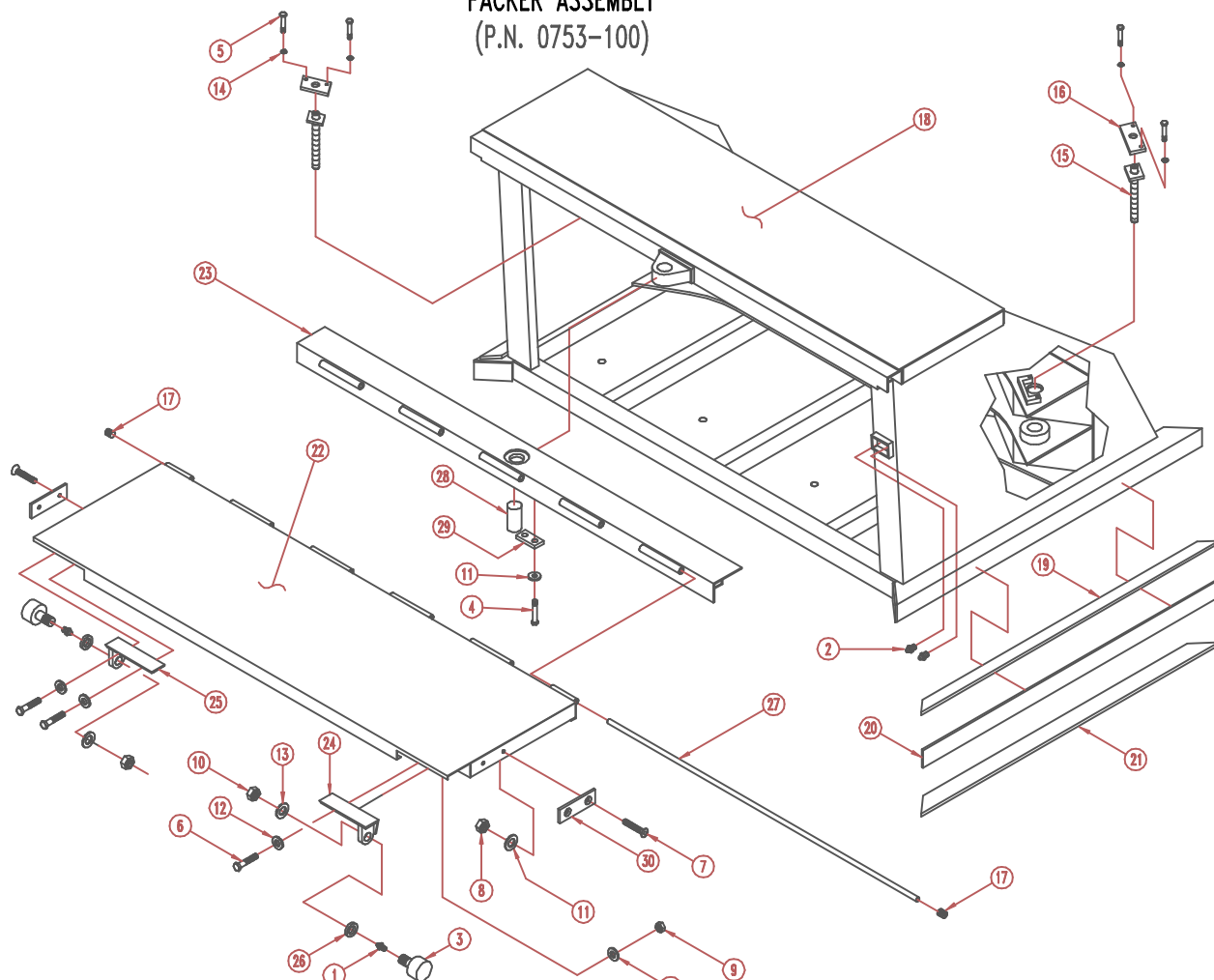
| ITEM | QTY | P/N | DESCRIPTION |
|------|-----|----------|--|
| 1 | 2 | 0040-799 | SNAPPER PIN, .38 x 2.50 |
| 2 | 2 | 0041-134 | LUBE FITTING, STRAIGHT x .12-27NPT |
| 3 | 2 | 0044-110 | ANTI-SWAY, MUDFLAP |
| 4 | 4 | 0044-127 | SPRING, COMPRESSION |
| 5 | 2 | 0044-302 | BRONZE BUSHING, OIL IMPREGNATED 1.500 O.D. x 1.250 I.D. x 1.25 |
| 6 | 2 | 0045-116 | SNAP RING, 1.75 DIA. SHAFT x .062 |
| 7 | 37 | 0045-156 | STEEL RIVET, .19 x .38-.50 GRIP RANGE |
| 8 | 2 | 0060-028 | CAPSCREW, .25-20NC x .75 |
| 9 | 12 | 0060-203 | CAPSCREW, .31-18NC x 1.00 |
| 10 | 4 | 0060-211 | CAPSCREW, .31-18NC x 1.25 |
| 11 | 6 | 0060-388 | CAPSCREW, .38-16NC x 1.00 |
| 12 | 2 | 0060-426 | CAPSCREW, .38-16NC x 2.00 |
| 13 | 2 | 0060-912 | CAPSCREW, .50-13NC x 6.50 |
| 14 | 24 | 0061-158 | CAPSCREW, .63-11NC x 2.00 |
| 15 | 4 | 0064-273 | CAPSCREW, .88-9NC x 7.00 (GR.8) |
| 16 | 2 | 0064-284 | CAPSCREW, .88-9NC x 3.50 (GR.8) |
| 17 | 24 | 0065-070 | HEX NUT, .63-11NC |
| 18 | 8 | 0065-172 | HEX NUT, .31-18NC NYLOC |
| 19 | 2 | 0065-209 | HEX NUT, .50-13NC NYLOC |
| 20 | 6 | 0065-247 | HEX NUT, NYLOC .88-9NC |
| 21 | 2 | 0066-014 | FLATWASHER, .25 |
| 22 | 12 | 0066-025 | FLATWASHER, .31 |
| 23 | 16 | 0066-033 | FLATWASHER, .38 |
| 24 | 12 | 0066-090 | FLATWASHER, .88 |
| 25 | 2 | 0067-015 | LOCKWASHER, .25 |
| 26 | 8 | 0067-026 | LOCKWASHER, .31 |
| 27 | 8 | 0067-034 | LOCKWASHER, .38 |
| 28 | 24 | 0067-072 | LOCKWASHER, .63 |
| 29 | 2 | 0072-003 | MUDFLAP, PENDPAC |
| 30 | 2 | 0244-031 | MUD FLAP STRAP |
| 31 | 1 | 0620-190 | LATCH STRUCTURE, R.H. |
| 32 | 1 | 0620-191 | LATCH STRUCTURE, L.H. |
| 33 | 2 | 0620-195 | OUTSIDE PLATE |
| 34 | 2 | 0620-200 | SAFETY LOCK STRUCTURE |
| 35 | 2 | 0620-207 | PIN LANYARD ASSEMBLY |
| 36 | 6 | 0601-639 | LOWER REAR MOUNT STRUCTURE |
| 37 | 1 | 0620-330 | SWITCH COVER STRUCTURE |
| 38 | 2 | 0620-379 | FLAT BUSHING |
| 39 | 2 | 0620-629 | PIN RETAINER PLATE |
| 40 | 2 | 0620-777 | BODY CYLINDER PIN STRUCTURE |
| 41 | 1 | 0621-249 | DOOR SEAL |
| 42 | 2 | 0621-256 | SEAL RETAINER SIDE STRIP |
| 43 | 1 | 0621-257 | SEAL RETAINER BOTTOM STRIP |
| 44 | 1 | 0620-470 | LADDER STRUCTURE (SIDE DOOR ENTRY) |

(CONTD.)

BODY
(CONTD.)

| ITEM | QTY | P/N | DESCRIPTION |
|------|-----|----------|---------------------------|
| 45 | 4 | 0060-407 | CAPSCREW, .38-16NC x 1.50 |
| 46 | 5 | 0065-180 | HEX NUT, .38-16NC NYLOC |
| 47 | 1 | 0620-326 | FRONT COVER |
| 48 | 2 | 0753-025 | CLEAN OUT DOOR STRUCTURE |

PACKER ASSEMBLY (P.N. 0753-100)



| ITEM | QTY | P/N | DESCRIPTION |
|------|-----|----------|---------------------------------------|
| 1 | 2 | 0041-123 | LUBE FITTING, .25 DRIVE |
| 2 | 2 | 0041-134 | ZERK, .13-27NPT |
| 3 | 2 | 0044-517 | STANDARD CAM FOLLOWER, 3.00 |
| 4 | 2 | 0060-737 | CAPSCREW, .50-13NC x 0.75 |
| 5 | 4 | 0060-741 | CAPSCREW, .50-13NC x 1.00 |
| 6 | 4 | 0061-158 | CAPSCREW, .63-11NC x 2.00 |
| 7 | 4 | 0064-698 | CAPSCREW, .50-13NC FLAT SOC HD x 1.00 |
| 8 | 4 | 0065-209 | HEX NUT, .50-13NC NYLOC |
| 9 | 4 | 0065-225 | HEX NUT, .63-11NC NYLOC |
| 10 | 2 | 0065-964 | HEX JAM NUT, 1.25-12NF |
| 11 | 6 | 0066-055 | FLATWASHER, .50 |
| 12 | 8 | 0066-071 | FLATWASHER, .63 |
| 13 | 2 | 0066-124 | FLATWASHER, 1.25 |
| 14 | 4 | 0067-056 | LOCKWASHER, .50 |
| 15 | 2 | 0620-552 | PACK CYLINDER PIN |
| 16 | 2 | 0620-554 | PIN COVER PLATE |
| 17 | 2 | 0036-349 | PLUG, MALE PIPE W/INT HEX - C3169x6 |

PACKER ASSEMBLY
(CONTD.)

| ITEM | QTY | P/N | DESCRIPTION |
|------|-----|----------|--------------------------|
| 18 | 1 | 0753-101 | PACKER STRUCTURE |
| 19 | 2 | 0753-110 | TOP WEAR PLATE |
| 20 | 2 | 0753-111 | SIDE WEAR PLATE |
| 21 | 2 | 0753-112 | BOTTOM WEAR PLATE |
| 22 | 1 | 0753-125 | FOLLOWER PANEL STR. |
| 23 | 1 | 0753-135 | HINGE STRUCTURE |
| 24 | 1 | 0753-140 | R.H. CAM MOUNT STRUCTURE |
| 25 | 1 | 0753-141 | L.H. CAM MOUNT STRUCTURE |
| 26 | 2 | 0753-142 | SPACER |
| 27 | 1 | 0753-147 | HINGE SHAFT |
| 28 | 1 | 0753-148 | HING PIN |
| 29 | 1 | 0753-149 | PIN RETAINER |
| 30 | 2 | 0753-150 | POLY WEAR PLATE |

(P.N. 0992-654)

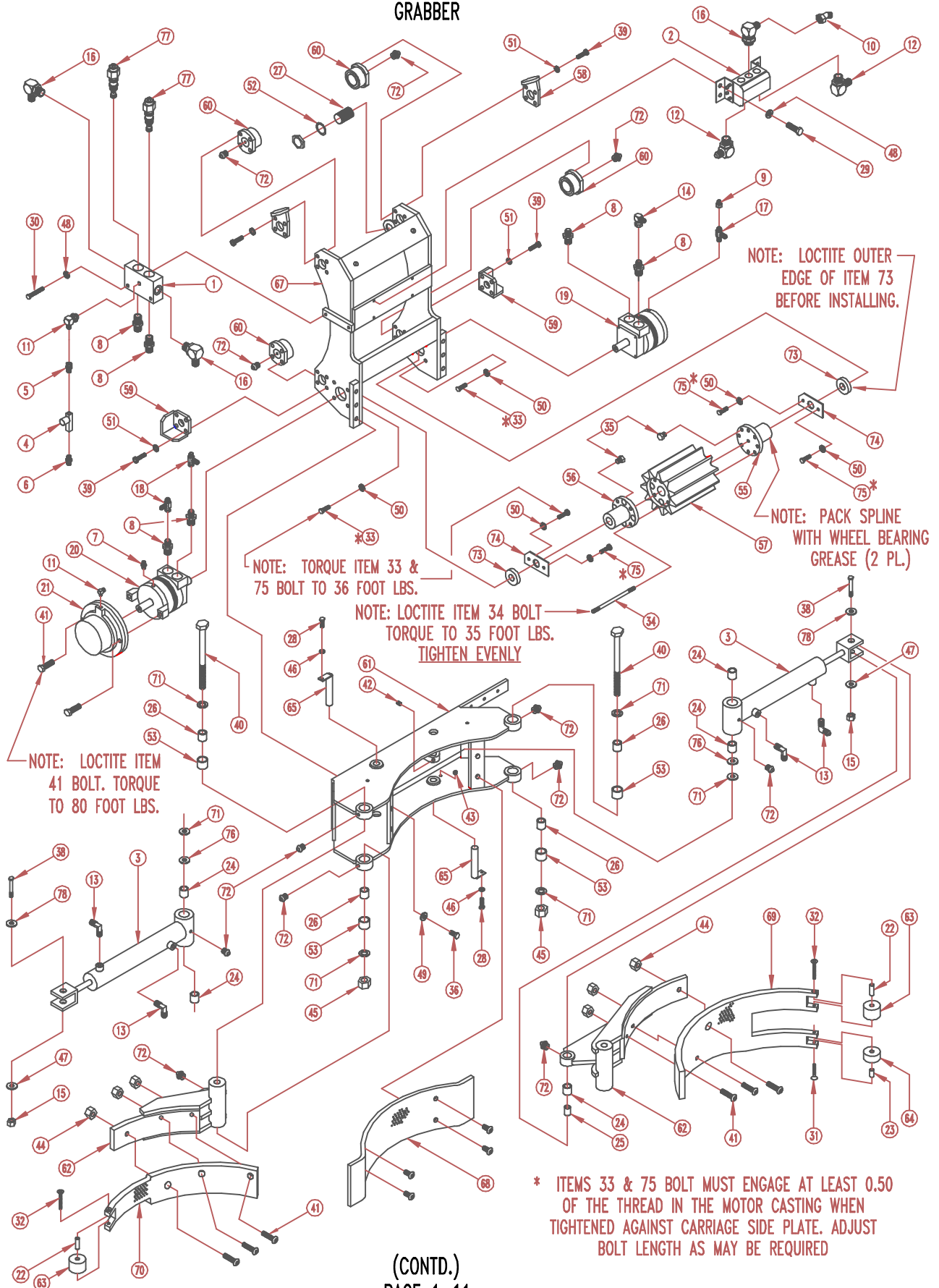
| ITEM | QTY | P/N | DESCRIPTION |
|------|-----|----------|--|
| 1 | 5 | 0032-061 | BLKHD. LOCK NUT-8 |
| 2 | 5 | 0076-008 | ADAPTER, 20% BULKHEAD, MALE TYPE 8 TO BULKHEAD 8 |

(CONTD.)
PAGE 1-9

LOADER ASSEMBLY
(CONTD.)

| ITEM | QTY | P/N | DESCRIPTION |
|------|-----|----------|--------------------------------|
| 16 | 2 | 0065-505 | HEX NUT, .50-13NC (UNI-TORQUE) |
| 17 | 2 | 0067-034 | LOCKWASHER, .38 |
| 18 | 1 | 0750-698 | PIN, SLIDE CYL. SHAFT END |
| 19 | 2 | 0750-699 | SPACER, SLIDE BOOM ROLLER |
| 20 | 1 | 0750-700 | PIN, SLIDE BOOM ROLLER |
| 21 | 1 | 0750-701 | SPACER, SLIDE BOOM ROLLER |
| 22 | 5 | 0089-235 | HYDRAULIC TUBE ASSEMBLY |
| 23 | 1 | 0992-430 | BOTTOM STOP STRUCTURE |
| 24 | 1 | 0992-460 | LOADER FRAME STRUCTURE |
| 25 | 1 | 0992-598 | RETAINER PLATE |

GRABBER



GRABBER
(CONTD.)

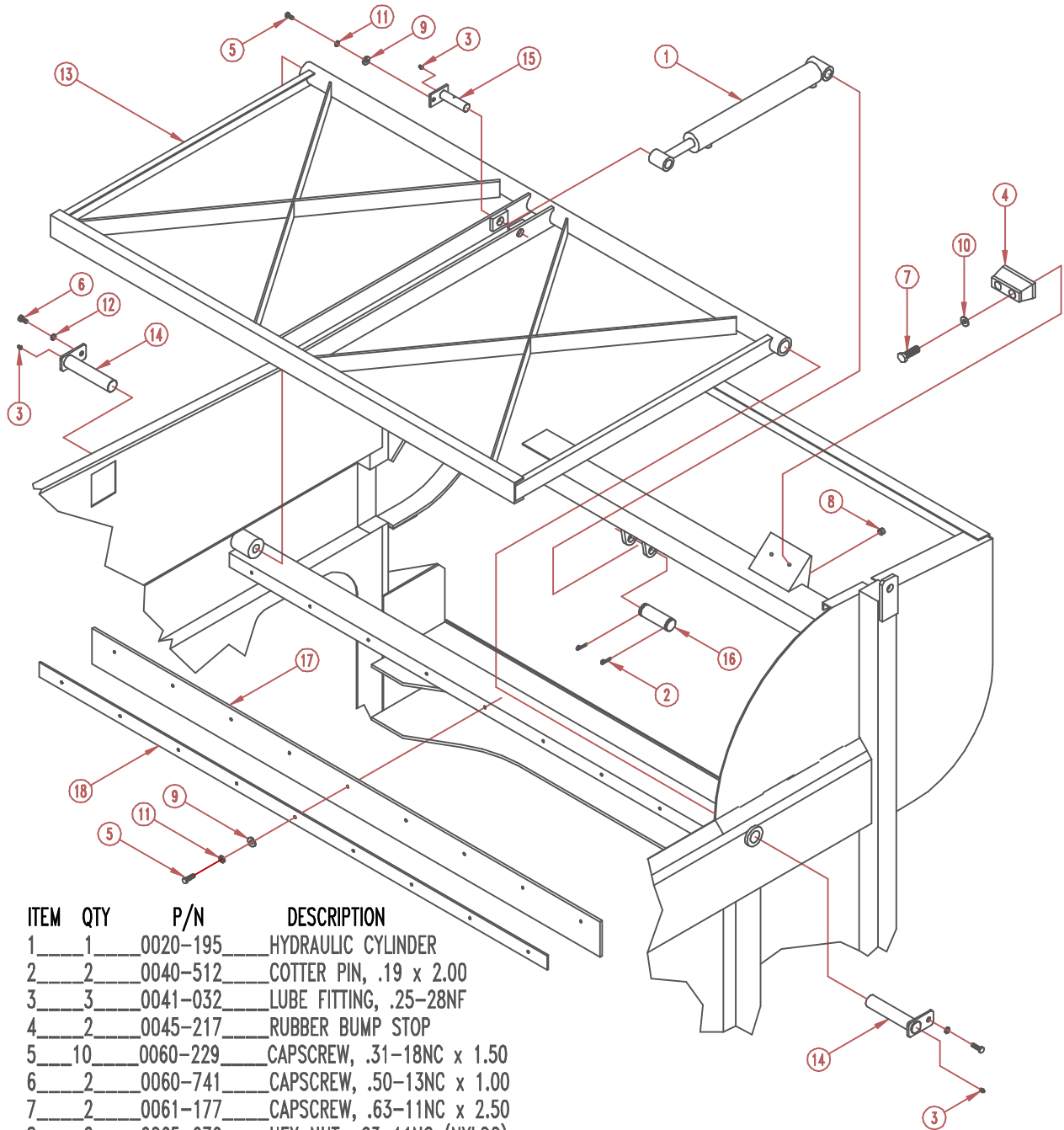
| ITEM | QTY | P/N | DESCRIPTION |
|------|-----|----------|--|
| 1 | 1 | 0024-064 | VALVE BODY |
| 2 | 1 | 0024-040 | GEAR DRIVEN FLOW DIVIDER |
| 3 | 2 | 0020-092 | HYDRAULIC CYLINDER |
| 4 | 1 | 0024-094 | FLOW CONTROL |
| 5 | 1 | 0032-706 | ADAPTER, MALE PIPE-2 TO FEMALE 37° JIC SWIVEL-4 |
| 6 | 1 | 0032-725 | ADAPTER, MALE TUBE-4 TO MALE PIPE-2 |
| 7 | 1 | 0033-469 | ADAPTER, MALE TUBE-4 TO MALE "O" RING-4 |
| 8 | 6 | 0033-484 | ADAPTER, MALE TUBE-8 TO MALE "O" RING-10 |
| 9 | 1 | 0033-935 | ADAPTER, MALE JIC-6 TO FEMALE JIC SWIVEL-4 |
| 10 | 1 | 0034-526 | ADAPTER, 45°, MALE TUBE-8 TO FEMALE 37° SWIVEL-8 |
| 11 | 2 | 0035-096 | ADAPTER, 90°, MALE ADJUSTABLE "O" RING-4 TO MALE 37° JIC-4 |
| 12 | 2 | 0035-097 | ADAPTER, 90°, MALE ADJUSTABLE "O" RING-10 TO MALE 37° JIC-6 |
| 13 | 4 | 0035-516 | ADAPTER, 90°, MALE TUBE-6 TO ADJUSTABLE "O" RING-4 |
| 14 | 1 | 0035-269 | ADAPTER, 90°, FEMALE 37° SWIVEL-8 TO MALE 37° FLARE-8 |
| 15 | 2 | 0065-483 | HEX NUT, UNI-TORQUE LOCKING .38-16NC |
| 16 | 3 | 0035-548 | ADAPTER, 90°, MALE TUBE-8 TO ADJUSTABLE "O" RING-10 |
| 17 | 1 | 0036-725 | ADAPTER, TEE PORT 1 ADJ. "O" RING-4 PORT 2&3 MALE TUBE-4 |
| 18 | 2 | 0036-858 | ADAPTER, TEE PORT 1 FEMALE 37° SWIVEL-8 PORT 2&3 MALE TUBE-8 |
| 19 | 1 | 0039-211 | HYDRAULIC MOTOR R.H. |
| 20 | 1 | 0039-212 | HYDRAULIC MOTOR L.H. |
| 21 | 1 | 0044-285 | BRAKE, MULTI-DISC |
| 22 | 2 | 0044-291 | BRONZE BUSHING |
| 23 | 1 | 0044-292 | BRONZE BUSHING |
| 24 | 6 | 0044-326 | SELF ADJUSTING SPRING STEEL BUSHINGS, .75 I.D., 1.00 O.D. x 1.00 |
| 25 | 2 | 0044-400 | INNER RACE, .50 I.D. |
| 26 | 4 | 0044-401 | INNER RACE, .75 I.D. |
| 27 | 1 | 0054-005 | PROX. SWITCH (N.O.) |
| 28 | 2 | 0060-036 | CAPSCREW, .25-20NC x 1.00 |
| 29 | 6 | 0060-195 | CAPSCREW, .31-18NC x .75 |
| 30 | 2 | 0060-267 | CAPSCREW, .31-18NC x 2.50 |
| 31 | 1 | 0060-268 | CAPSCREW, .31-18NC x 2.00 FH-CS |
| 32 | 2 | 0060-269 | CAPSCREW, .31-18NC x 2.50 FH-CS |
| 33 | 4 | 0060-388 | CAPSCREW, .38-16NC x 1.00 GR.8 |
| 34 | 4 | 0060-560 | CAPSCREW, .38-16NC x 7.00 |
| 35 | 8 | 0060-734 | CAPSCREW, .50-13NC x .50 |
| 36 | 6 | 0060-761 | CAPSCREW, .50-13NC x 1.25 |
| 37 | 4 | 0060-803 | CAPSCREW, .50-13NC BUTTON HEAD x 1.25 |
| 38 | 2 | 0064-160 | SHOULDER BOLT, .50, .38-16NC x 1.75 |
| 39 | 14 | 0064-146 | CAPSCREW, M10-1.5 x 35MM SOCKET HEAD |
| 40 | 2 | 0064-271 | CAPSCREW, .75-10NC x 9.00 GR. 8 |
| 41 | 8 | 0064-535 | CAPSCREW, .50-13NC x 2.00 |
| 42 | 2 | 0064-631 | SETSCREW, .38-16NC x .50 |
| 43 | 2 | 0065-164 | HEX NUT, NYLOCK .25-20NC |
| 44 | 6 | 0065-505 | HEX NUT, .50-13NC STOVER |
| 45 | 2 | 0065-532 | HEX NUT, .75-10NC STOVER |
| 46 | 2 | 0066-014 | FLAT WASHER, .25 |
| 47 | 2 | 0066-033 | FLAT WASHER, .38 |
| 48 | 6 | 0067-026 | LOCKWASHER, .31 |

(CONTD.)

GRABBER
(CONTD.)

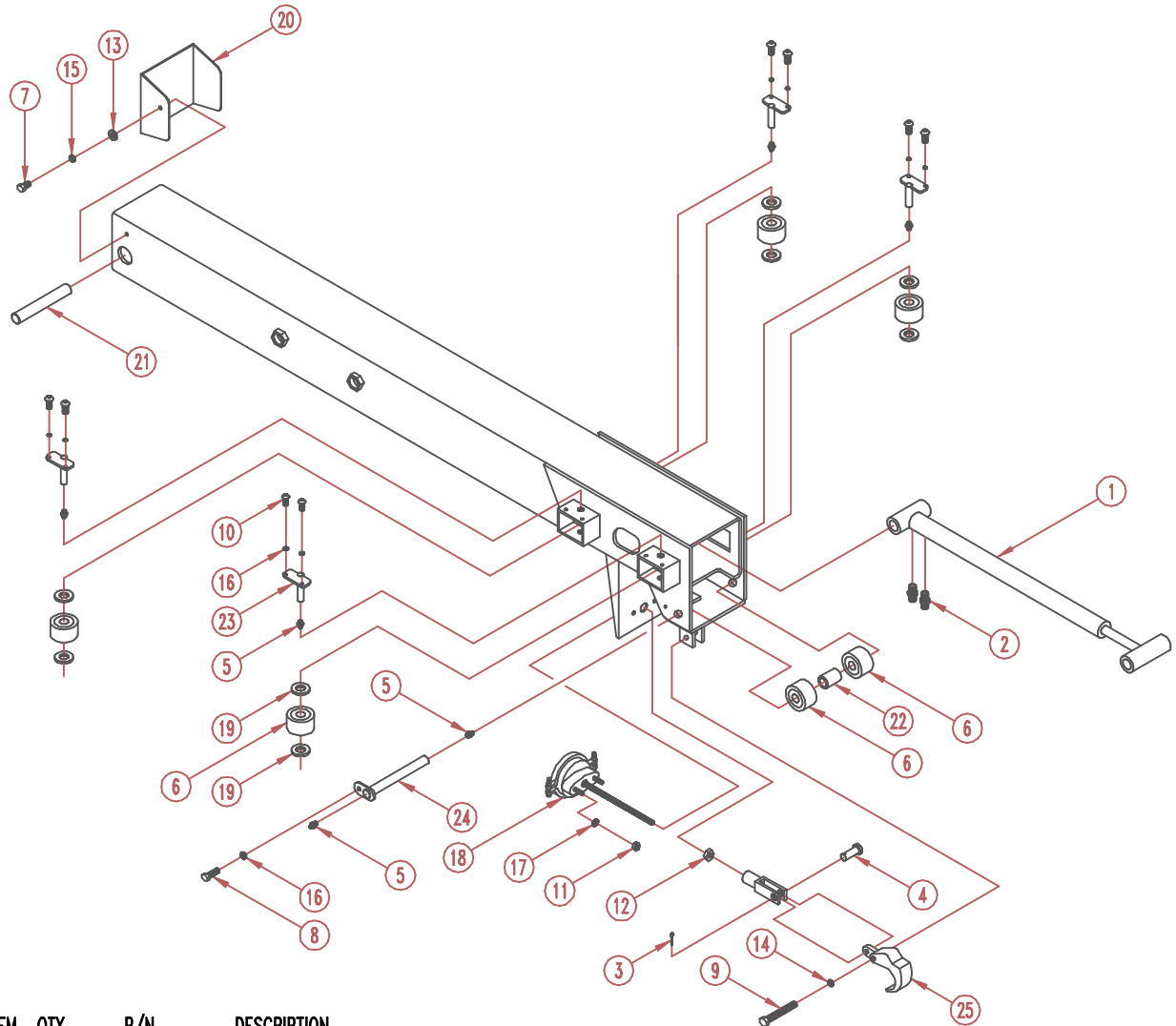
| ITEM | QTY | P/N | DESCRIPTION |
|------|-----|----------|--|
| 49 | 6 | 0067-056 | LOCKWASHER, .50 |
| 50 | 8 | 0067-145 | HI-COLLAR LOCKWASHER, .38 |
| 51 | 14 | 0067-157 | LOCKWASHER, METRIC M10 |
| 52 | 2 | 0067-164 | TOOTH LOCK WASHER |
| 53 | 4 | 0044-327 | SELF ADJUSTING SPRING STEEL BUSHINGS 1.00 I.D., 1.25 O.D. x 1.00 |
| 54 | 1 | 0751-125 | GRABBER TUBE KIT (NOT SHOWN) |
| 55 | 1 | 0992-191 | SPLINED HUB, C-BORE |
| 56 | 1 | 0992-192 | SPLINED HUB, THREADED |
| 57 | 1 | 0992-218 | DRIVE GEAR |
| 58 | 2 | 0992-421 | STOP BRACKET UPPER STRUCTURE |
| 59 | 2 | 0992-426 | STOP BRACKET LOWER STRUCTURE |
| 60 | 4 | 0992-432 | ROLLER ASSEMBLY |
| 61 | 1 | 0992-573 | UNIVERSAL GRIP WELDMENT |
| 62 | 2 | 0992-586 | PIVOT TUBE, ARM BASE STRUCTURE |
| 63 | 2 | 0992-590 | GRIP ROLLER, 1.44 WIDE |
| 64 | 1 | 0992-591 | GRIP ROLLER, .94 WIDE |
| 65 | 2 | 0992-597 | CLEVIS PIN, (GRIP CYL.) |
| 66 | 1 | 0992-625 | FORMED COVER PLATE, ALUMINUM |
| 67 | 1 | 0992-630 | CARRIAGE STRUCTURE |
| 68 | 1 | 0992-682 | BACKPLATE ASSEMBLY |
| 69 | 1 | 0992-683 | R.H. ARM W/LINER |
| 70 | 1 | 0992-684 | L.H. ARM W/LINER |
| 71 | 6 | 0041-475 | MACHINE BUSHING, .75 I.D. x 14 GA. |
| 72 | 12 | 0041-032 | LUBE FITTING, .25-28NF STRAIGHT |
| 73 | 2 | 0044-545 | AIRCRAFT BEARING |
| 74 | 2 | 0992-429 | RETAINER PLATE |
| 75 | 4 | 0060-401 | CAPSCREW, .38-16NC x 1.25 GR.8 |
| 76 | 2 | 0041-255 | MACHINE BUSHING, .75 I.D. x 10 GA. |
| 77 | 2 | 0024-063 | VALVE, CARTRIDGE |
| 78 | 2 | 0041-476 | MACHINE BUSHING, .50 I.D. x 14 GA. |

ENCLOSURE PANEL GROUP



| ITEM | QTY | P/N | DESCRIPTION |
|------|-----|----------|-------------------------------|
| 1 | 1 | 0020-195 | HYDRAULIC CYLINDER |
| 2 | 2 | 0040-512 | COTTER PIN, .19 x 2.00 |
| 3 | 3 | 0041-032 | LUBE FITTING, .25-28NF |
| 4 | 2 | 0045-217 | RUBBER BUMP STOP |
| 5 | 10 | 0060-229 | CAPSCREW, .31-18NC x 1.50 |
| 6 | 2 | 0060-741 | CAPSCREW, .50-13NC x 1.00 |
| 7 | 2 | 0061-177 | CAPSCREW, .63-11NC x 2.50 |
| 8 | 2 | 0065-070 | HEX NUT, .63-11NC (NYLOC) |
| 9 | 10 | 0066-025 | FLATWASHER, .31 |
| 10 | 2 | 0066-071 | FLATWASHER, .63 |
| 11 | 10 | 0067-026 | LOCKWASHER, .31 |
| 12 | 2 | 0067-056 | LOCKWASHER, .50 |
| 13 | 1 | 0753-156 | ENCLOSURE PANEL STRUCTURE |
| 14 | 2 | 0753-169 | ENCLOSURE PANEL PIN STRUCTURE |
| 15 | 1 | 0753-172 | CYLINDER TOP PIN STRUCTURE |
| 16 | 1 | 0753-174 | CYLINDER BOTTOM PIN |
| 17 | 1 | 0753-178 | RUBBER WIPER |
| 18 | 1 | 0753-179 | WIPER RETAINER |

"INTEGRATED" SLIDE TUBE GROUP



| ITEM | QTY | P/N | DESCRIPTION |
|------|-----|----------|---|
| 1 | 1 | 0020-177 | EXTEND CYLINDER |
| 2 | 2 | 0033-484 | ADAPTER, MALE TUBE-8 TO MALE "O" RING-10 |
| 3 | 1 | 0040-504 | COTTER PIN, .19 x 1.50 |
| 4 | 1 | 0040-012 | PIN, .50 YOKE |
| 5 | 6 | 0041-046 | LUBE FITTING, STRAIGHT .31-24NF |
| 6 | 6 | 0044-539 | ROLLER, TRACK 3.00 O.D. x 1.00 I.D. |
| 7 | 2 | 0060-195 | CAPSCREW, .31-18NC x .75 |
| 8 | 1 | 0060-388 | CAPSCREW, .38-16NC x 1.00 |
| 9 | 1 | 0060-461 | BOLT, .38-16NC HEX HEAD x 3.00 |
| 10 | 8 | 0064-905 | CAPSCREW, BUTTON HEAD SOCKET .38-16NC x .75 |
| 11 | 2 | 0065-043 | HEX NUT, .44-14NC |
| 12 | 1 | 0065-650 | HEX JAM NUT, .50-13NC |
| 13 | 2 | 0066-025 | FLATWASHER, .31 |
| 14 | 1 | 0066-033 | FLATWASHER, .38 |
| 15 | 2 | 0067-026 | LOCKWASHER, .31 |
| 16 | 9 | 0067-034 | LOCKWASHER, .38 |
| 17 | 2 | 0067-045 | LOCKWASHER, .44 |

"INTEGRATED" SLIDE TUBE GROUP
(CONTD.)

| ITEM | QTY | P/N | DESCRIPTION |
|------|-----|----------|------------------------------|
| 18 | 1 | 0085-768 | CHAMBER, AIR |
| 19 | 8 | 0750-699 | SPACER, SLIDE BOOM ROLLER |
| 20 | 1 | 0750-754 | COVER, SLIDE TUBE END |
| 21 | 1 | 0750-770 | PIN, SLIDE CYLINDER TUBE END |
| 22 | 1 | 0750-771 | SPACER, SLIDE ROLLER |
| 23 | 4 | 0750-772 | STRUCTURE, SLIDE ROLLER PIN |
| 24 | 1 | 0750-775 | STR., SLIDE ROLLER PIN |
| 25 | 1 | 0750-884 | STRUCTURE, MAST LATCH |

LADDER



| ITEM | QTY | P/N | DESCRIPTION |
|------|-----|----------|-------------------------------------|
| 1 | 1 | 0750-803 | STR., UPPER LADDER |
| 2 | 1 | 0750-804 | STR., LOWER LADDER |
| 3 | 2 | 0750-809 | LADDER FOOT |
| 4 | 1 | 0042-672 | LATCH, SPRING LOADED |
| 5 | 4 | 0064-482 | CAPSCREW, #10-24NC x 1.00 |
| 6 | 4 | 0065-153 | HEX NUT, #10-24NC (NYLOC) |
| 7 | 4 | 0066-154 | FLATWASHER, #10 |
| 8 | 4 | 0064-537 | CAPSCREW, .50-13NC x 1.50 GR.8 |
| 9 | 12 | 0066-055 | FLATWASHER, .50 |
| 10 | 4 | 0065-505 | HEX NUT, .50-13NC (UNI-TORQUE) |
| 11 | 4 | 0060-388 | CAPSCREW, .38-16NC x 1.00 |
| 12 | 8 | 0066-033 | FLATWASHER, .38 |
| 13 | 4 | 0065-180 | HEX NUT, .38-16NC (NYLOC) |
| 14 | 2 | 0045-214 | RUBBER BUMPER |
| 15 | 2 | 0064-807 | CAPSCREW, #10-16 x .75 SELF TAPPING |

DECALS

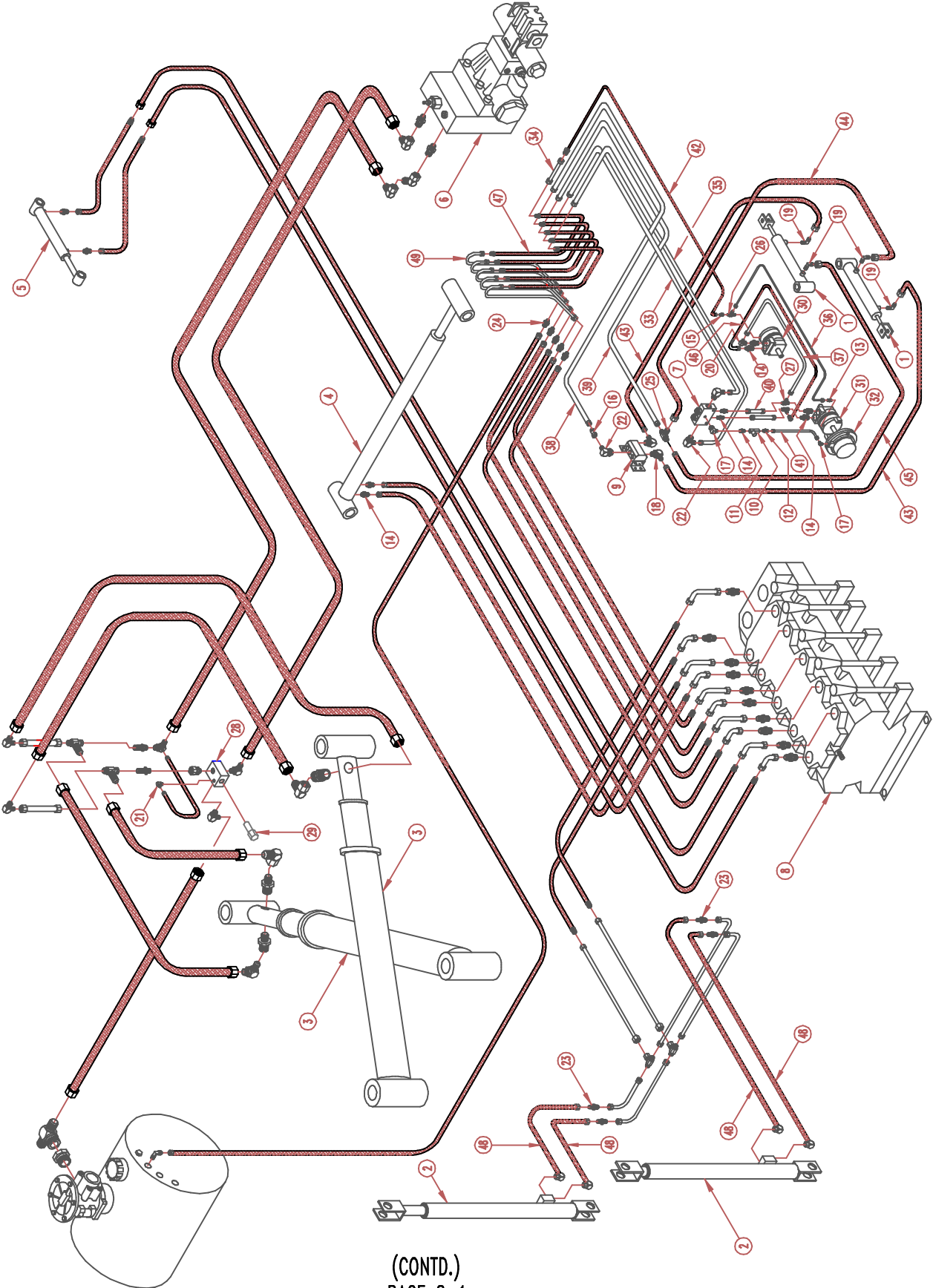
| ITEM | QTY | P/N | DESCRIPTION |
|------|-----|----------|---------------------------------|
| 1 | 2 | 0605-760 | DANGER PINCH POINT |
| 2 | 2 | 0605-788 | WARNING TAILGATE LOCKS |
| 3 | 1 | 0605-776 | DANGER STAND CLEAR PACKER PANEL |
| 4 | 2 | 0605-794 | DANGER STAND CLEAR TAILGATE |
| 5 | 2 | 0605-798 | NOTICE SETTING TAILGATE PROPS |
| 6 | 1 | 0605-768 | CAUTION STOP ENGINE |
| 7 | 1 | 0605-802 | PRECAUTIONS |
| 8 | 1 | 0605-809 | WARNING ELECTROCUTION |
| 9 | 1 | 0605-813 | CAUTION DISCONNECT BATTERY |
| 10 | 1 | 0605-815 | NOTICE EXTENSION LADDER |
| 11 | 1 | 0605-831 | DANGER STAND CLEAR LIFT |
| 12 | 1 | 0605-840 | WARNING FOOT CRUSH |
| 13 | 1 | 0605-846 | NOTICE HYDRAULIC FLUID |
| 14 | 1 | 0605-843 | CAUTION HYDRAULIC PRESSURE |
| 15 | 2 | 0605-853 | DANGER UNAUTHORIZED PERSONNEL |
| 16 | 1 | 0605-854 | DANGER WATCH YOUR STEP |
| 17 | 1 | 0605-856 | WARNING HEIGHT |
| 18 | 2 | 0605-859 | CAUTION PTO HAZARD |
| 19 | 2 | 0605-864 | DANGER AMPUTATION HAZARD |
| 20 | 1 | 0605-871 | CAUTION RIGHT HAND DRIVE |
| 21 | 1 | 0605-966 | HYDRAULIC OIL SPECS. |
| 22 | 1 | 0605-967 | NOTICE HYDRAULIC FLUID LEVEL |
| 23 | 2 | 0605-754 | FENDER REFLECTIVE TAPE |
| 24 | 1 | 0751-143 | BUMPER REFLECTIVE TAPE |
| 25 | 1 | 0751-144 | TAILGATE REFLECTIVE TAPE |

SECTION 2

HYDRAULICS

| | |
|-------------------------------------|----------|
| HYDRAULIC SYSTEM (FUNCTION PORTION) | 2-1, 2-2 |
| HYDRAULIC SYSTEM (CONTROL PORTION) | 2-3, 2-4 |
| GRAB CYLINDER | 2-5 |
| TAILGATE CYLINDER | 2-6 |
| PACKER CYLINDER | 2-7 |
| ARM EXTEND CYLINDER | 2-8 |
| ENCLOSURE PANEL CYLINDER | 2-9 |
| PRESSURE FILTER | 2-10 |
| RETURN FILTER | 2-11 |
| HYDRAULIC TANK | 2-12 |

HYDRAULIC SYSTEM (FUNCTION PORTION)



HYDRAULIC SYSTEM (FUNCTION PORTION) (CONTD.)

| ITEM | QTY | P/N | DESCRIPTION |
|------|-----|----------|--|
| 1 | 2 | 0020-092 | CYLINDER, UNIVERSAL GRIP, 1.50 BORE - 8.39 STROKE |
| 2 | 2 | 0020-169 | CYLINDER ASSEMBLY, TAILGATE LIFT |
| 3 | 2 | 0020-165 | PACKER CYLINDER |
| 4 | 1 | 0020-177 | EXTEND CYLINDER |
| 5 | 1 | 0020-195 | HYDRAULIC CYLINDER |
| 6 | 1 | 0024-000 | DIRECTIONAL VALVE |
| 7 | 1 | 0024-024 | VALVE, COUNTER BALANCE W/SHUTTLE |
| 8 | 1 | 0024-037 | VALVE ASSEMBLY, 5 STATION W/LIGHTS FIX. |
| 9 | 1 | 0024-040 | FLOW DIVIDER, 5-10 GPM |
| 10 | 1 | 0024-094 | FLOW CONTROL |
| 11 | 1 | 0032-707 | ADAPTER, MALE PIPE-4 TO FEMALE 37° JIC SWIVEL-4 |
| 12 | 1 | 0032-726 | ADAPTER, MALE TUBE-4 TO MALE PIPE-4 |
| 13 | 1 | 0033-469 | ADAPTER, MALE TUBE-4 TO MALE "O" RING-4 |
| 14 | 8 | 0033-484 | ADAPTER, MALE TUBE-8 TO MALE "O" RING-10 |
| 15 | 1 | 0033-935 | ADAPTER, MALE JIC-6 TO FEMALE JIC-4 |
| 16 | 1 | 0034-526 | ADAPTER, 45°, MALE TUBE-8 TO FEMALE 37° SWIVEL-8 |
| 17 | 2 | 0035-096 | ADAPTER, 90°, MALE ADJUSTABLE "O" RING-4 TO MALE 37° JIC-4 |
| 18 | 2 | 0035-097 | ADAPTER, 90°, MALE ADJUSTABLE "O" RING-10 TO MALE 37° JIC-6 |
| 19 | 4 | 0035-516 | ADAPTER, 90°, MALE TUBE-6 TO ADJUSTABLE MALE "O" RING-4 |
| 20 | 1 | 0035-269 | ADAPTER, 90°, FEMALE 37° SWIVEL-8 TO MALE 37° JIC-8 |
| 21 | 1 | 0035-508 | ADAPTER, 90°, MALE TUBE-6 TO ADJUSTABLE "O" RING-6 |
| 22 | 3 | 0035-548 | ADAPTER, 90°, MALE TUBE-8 TO ADJUSTABLE "O" RING-10 |
| 23 | 4 | 0035-827 | ADAPTER, BULKHEAD UNION MALE TUBE-8 TO BULKHEAD-8 |
| 24 | 5 | 0036-028 | ADAPTER, 90°, BULKHEAD, MALE TUBE-8 TO BULKHEAD-8 |
| 25 | 1 | 0036-552 | ADAPTER, TEE - PORTS 1,2 & 3 MALE TUBE-8 |
| 26 | 1 | 0036-725 | ADAPTER, TEE - PORT 1 ADJ. "O" RING-4, PORTS 2 & 3 MALE TUBE-4 |
| 27 | 2 | 0036-858 | ADAPTER, TEE - PORT 1 FEMALE 37° SWIVEL-8, PORTS 2 & 3 MALE TUBE-8 |
| 28 | 1 | 0039-139 | CARTRIDGE BLOCK |
| 29 | 1 | 0039-140 | PILOT TO OPEN CHECK VALVE CARTRIDGE |
| 30 | 1 | 0039-211 | MOTOR, HYDRAULIC R.H. |
| 31 | 1 | 0039-212 | MOTOR, HYDRAULIC L.H. |
| 32 | 1 | 0044-285 | BRAKE, ESKRIDGE |
| 33 | 1 | 0089-210 | TUBE ASSEMBLY |
| 34 | 1 | 0089-211 | TUBE ASSEMBLY |
| 35 | 1 | 0089-212 | TUBE ASSEMBLY |
| 36 | 1 | 0089-213 | TUBE ASSEMBLY |
| 37 | 1 | 0089-215 | TUBE ASSEMBLY |
| 38 | 1 | 0089-216 | TUBE ASSEMBLY |
| 39 | 1 | 0089-217 | TUBE ASSEMBLY |
| 40 | 2 | 0089-218 | TUBE ASSEMBLY |
| 41 | 1 | 0089-219 | TUBE ASSEMBLY |
| 42 | 1 | 0090-430 | HOSE ASSEMBLY |
| 43 | 2 | 0090-442 | HOSE ASSEMBLY |
| 44 | 1 | 0090-443 | HOSE ASSEMBLY |
| 45 | 1 | 0090-444 | HOSE ASSEMBLY |
| 46 | 1 | 0090-445 | HOSE ASSEMBLY |
| 47 | 5 | 0090-480 | HOSE ASSEMBLY |
| 48 | 4 | 0090-484 | HOSE ASSEMBLY |
| 49 | 5 | 0089-235 | TUBE ASSEMBLY |

This diagram illustrates the assembly of a hydraulic system. The components are numbered as follows:

- 1: Hydraulic pump/motor unit.
- 2: Multi-port hydraulic manifold.
- 3: Hydraulic cylinder.
- 4: Hose end fitting.
- 5: Hydraulic hose.
- 6: Hose end fitting.
- 7: Hose end fitting.
- 8: Hose end fitting.
- 9: Hose end fitting.
- 10: Hose end fitting.
- 11: Hose end fitting.
- 12: Hose end fitting.
- 13: Hose end fitting.
- 14: Hose end fitting.
- 15: Hose end fitting.
- 16: Hose end fitting.
- 17: Hose end fitting.
- 18: Hose end fitting.
- 19: Hose end fitting.
- 20: Hose end fitting.
- 21: Hose end fitting.
- 22: Hose end fitting.
- 23: Hose end fitting.
- 24: Hose end fitting.

(CONTD.)
PAGE 2-3

HYDRAULIC SYSTEM (CONTROL PORTION)
(CONTD.)

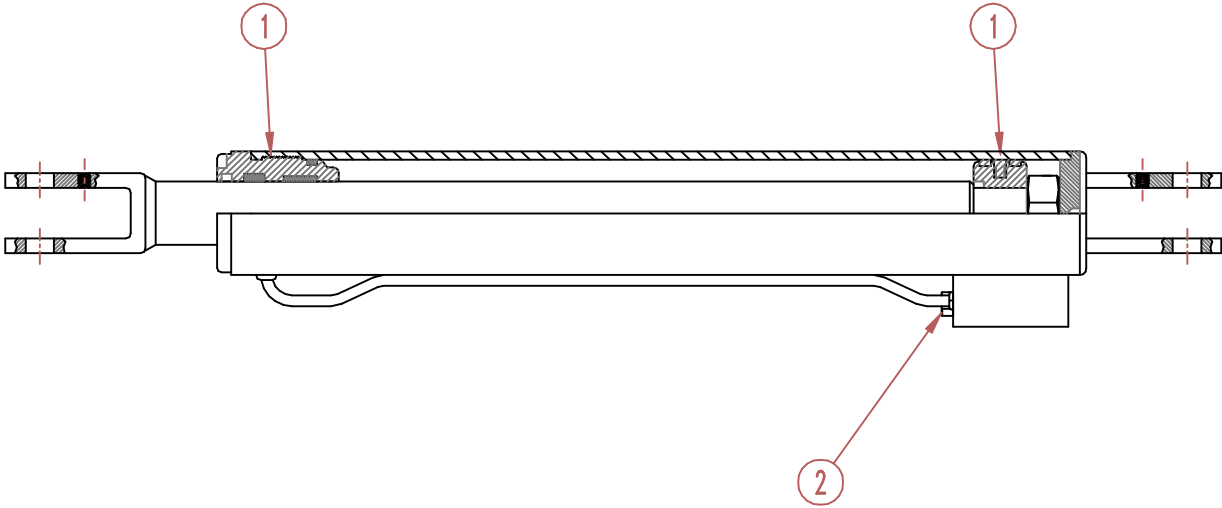
| ITEM | QTY | P/N | DESCRIPTION |
|------|-----|----------|--|
| 8 | 2 | 0033-540 | ADAPTER, MALE TUBE-12 TO MALE "O" RING-16 |
| 9 | 1 | 0033-596 | ADAPTER, MALE TUBE-16 TO MALE "O" RING-20 |
| 10 | 2 | 0035-118 | ADAPTER, 90°, MALE TUBE-8 TO MALE PIPE-8 |
| 11 | 2 | 0035-607 | ADAPTER, 90°, MALE TUBE-12 TO ADJ. "O" RING-16 |
| 12 | 2 | 0035-776 | ADAPTER, CODE 62 FLANGE-16 TO MALE JIC-12 |
| 13 | 2 | 0036-725 | ADAPTER TEE, PORT 1 ADJ. "O" RING-4, PORTS 2 & 3 MALE TUBE-4 |
| 14 | 1 | 0036-863 | ADAPTER TEE, PORT 1 FEMALE 37° SWIVEL-16, PORTS 2 & 3 MALE TUBE-16 |
| 15 | 1 | 0036-872 | ADAPTER TEE, PORTS 1 & 2 MALE TUBE-16, PORT 3 FEMALE 37° SWIVEL-16 |
| 16 | 2 | 0037-000 | FITTING, FLANGED |
| 17 | 2 | 0037-437 | SPLIT FLANGE PAD, W/KIT 1.00 |
| 18 | 2 | 0037-469 | SPLIT FLANGE PAD, W/KIT 2.00 |
| 19 | 2 | 0039-033 | PRESSURE FILTER |
| 20 | 4 | 0045-104 | T-BOLT CLAMP (2.50 NOM) |
| 21 | 2 | 0045-108 | T-BOLT CLAMP (3.00 NOM) |
| 22 | 1 | 0024-108 | CHECK VALVE |
| 23 | 1 | 0034-152 | ADAPTER, MALE TUBE-16 TO FEM. TUBE-12 |
| 24 | 1 | 0035-270 | ADAPTER, MALE TUBE-12 TO FEM. TUBE SW.-12 |

GRAB CYLINDER
P/N 0020-092



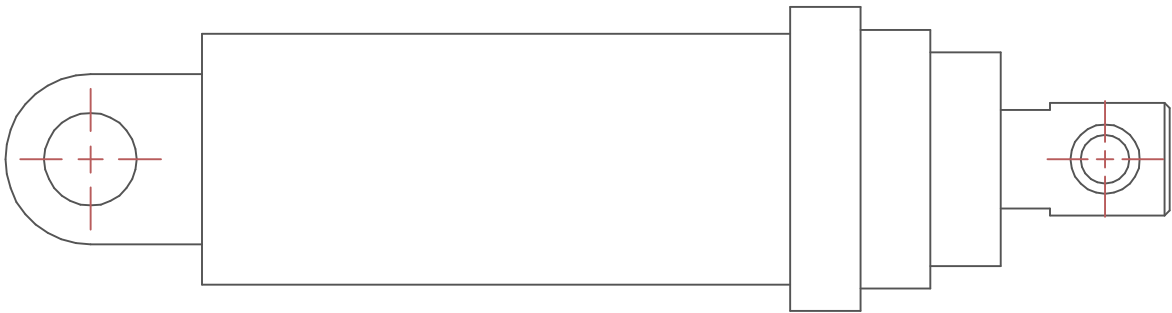
| ITEM | QTY | P/N | DESCRIPTION |
|------|-----|----------|-------------|
| 1 | 1 | 0022-441 | SEAL KIT |

TAILGATE CYLINDER
P.N. 0020-169 (36" STROKE)



| ITEM | QTY | P/N | DESCRIPTION |
|------|-----|----------|-------------|
| 1 | 1 | 0022-422 | SEAL KIT |
| 2 | 1 | 0039-138 | CARTRIDGE |

PACKER CYLINDER
P.N. 0020-165



| ITEM | QTY | P/N | DESCRIPTION |
|------|-----|----------|-------------|
| 1 | 1 | 0022-500 | SEAL KIT |

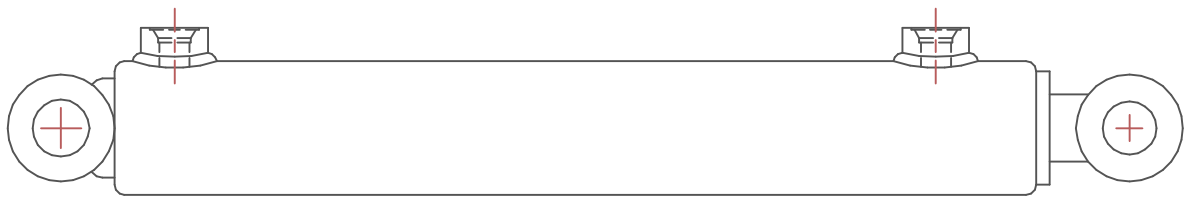
ARM EXTEND CYLINDER
P/N 0020-177



| ITEM | QTY | P/N | DESCRIPTION |
|------|-----|----------|-------------|
| 1 | 1 | 0022-420 | SEAL KIT |

ENCLOSURE PANEL CYLINDER

P.N. 0020-195



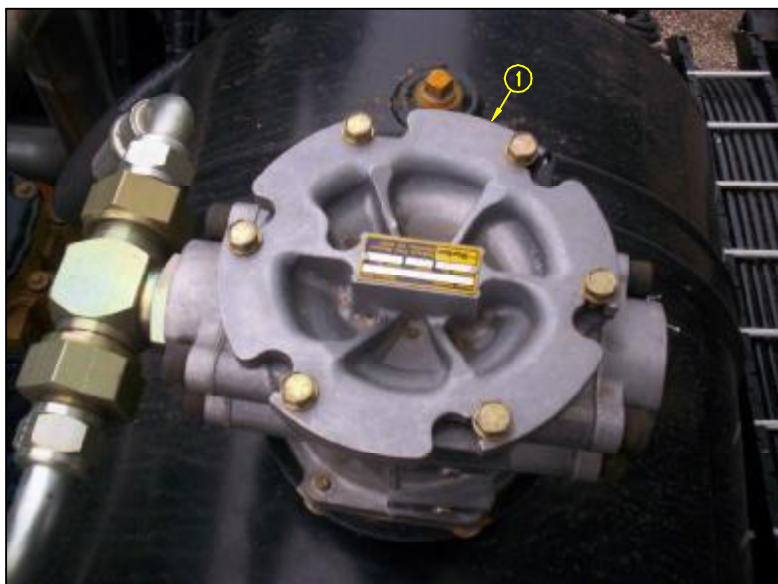
| ITEM | QTY | P/N | DESCRIPTION |
|------|-----|----------|-------------|
| 1 | 1 | 0022-426 | SEAL KIT |

PRESSURE FILTERS



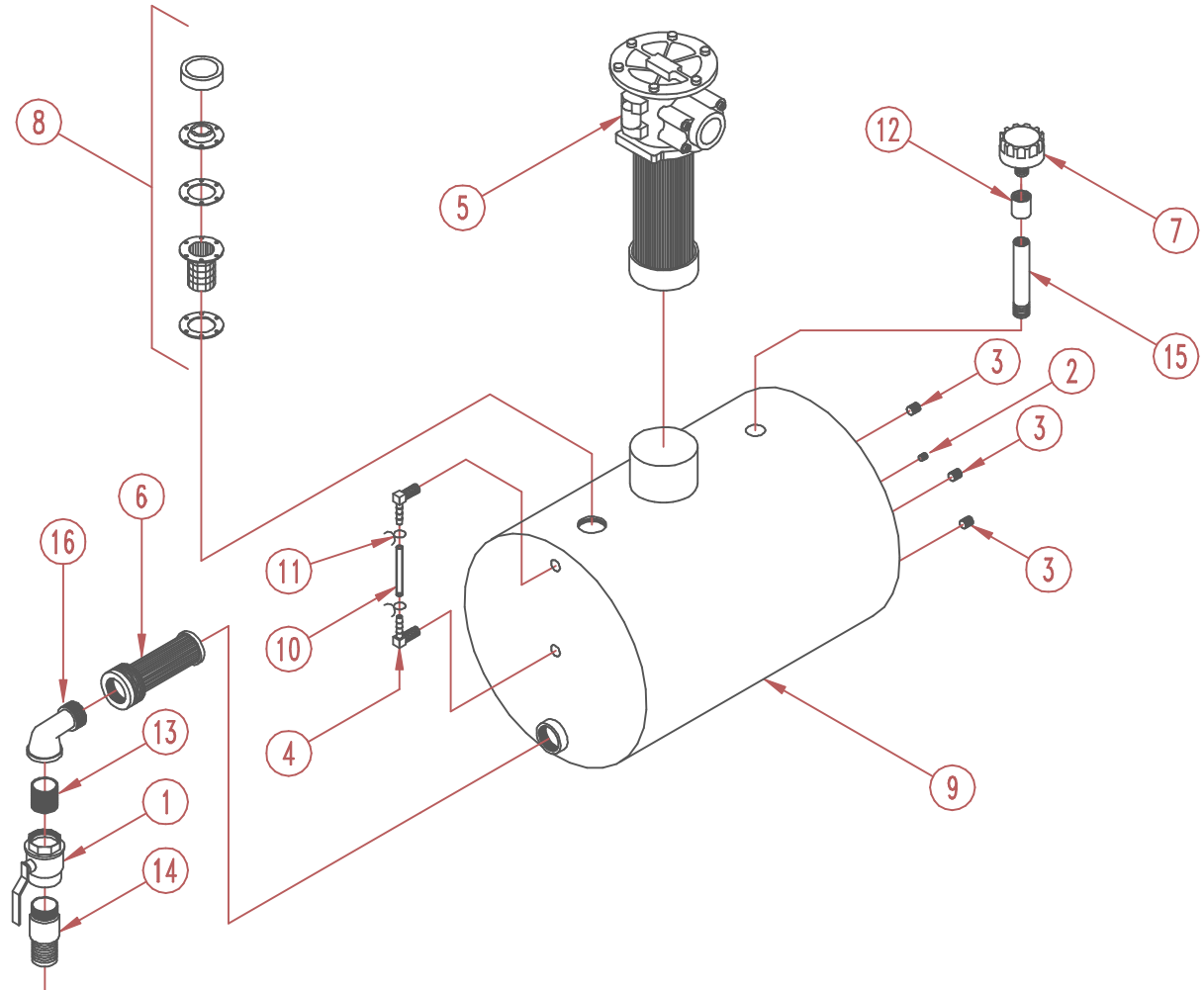
| ITEM | QTY | P/N | DESCRIPTION |
|------|-----|----------|-----------------|
| 1 | 2 | 0039-033 | PRESSURE FILTER |
| 2 | 2 | 0039-034 | ELEMENT |

RETURN FILTER



| ITEM | QTY | P/N | DESCRIPTION |
|------|-----|----------|------------------------|
| 1 | 1 | 0039-027 | RETURN FILTER (PARKER) |
| 2 | 1 | 0039-029 | ELEMENT (PARKER) |

HYDRAULIC TANK ASSEMBLY



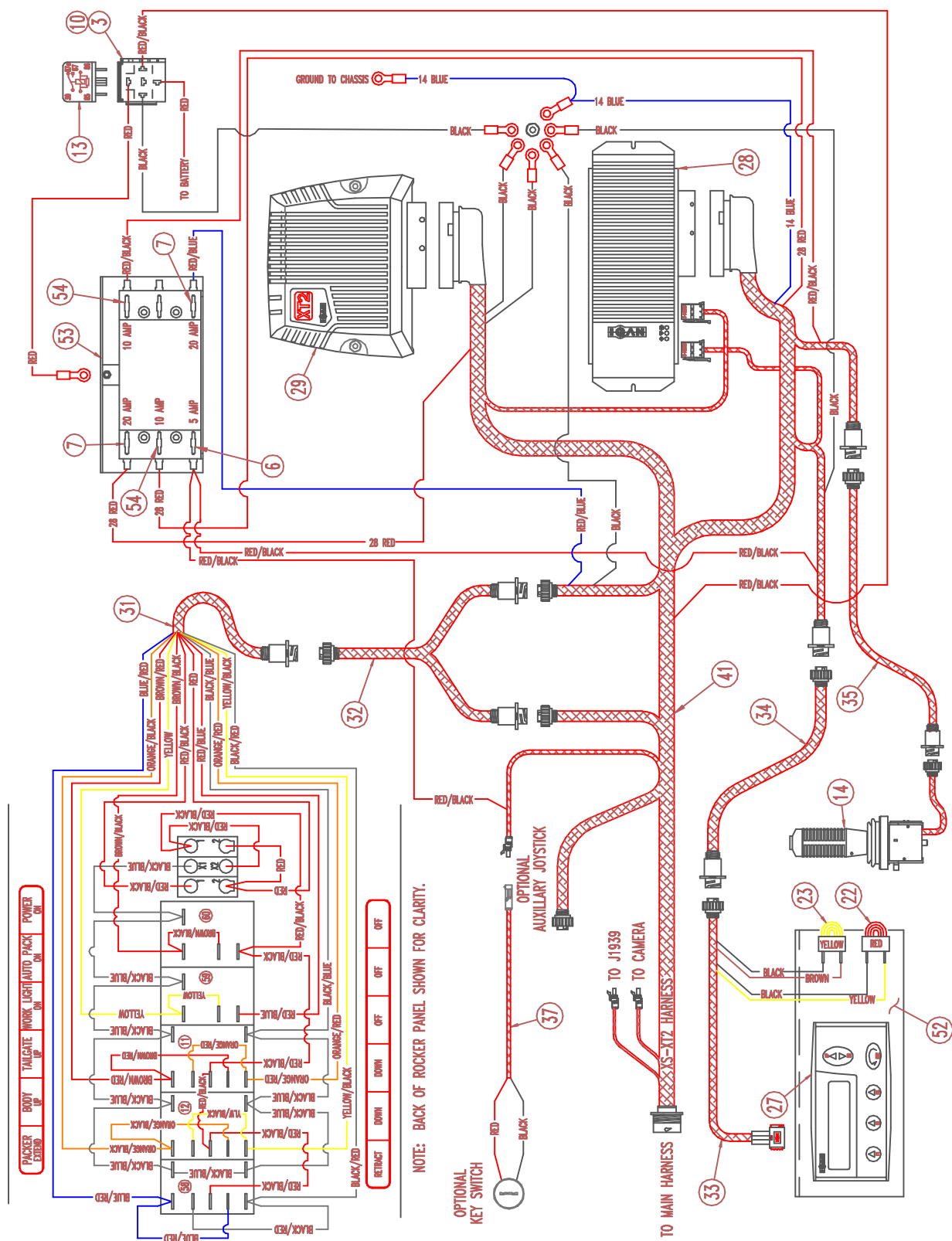
| ITEM | QTY | P/N | DESCRIPTION |
|------|-----|----------|---|
| 1 | 1 | 0024-042 | 2.00 BALL VALVE |
| 2 | 1 | 0036-348 | PLUG, MALE PIPE W/INTERNAL HEX - C3169 x 4 |
| 3 | 3 | 0036-350 | PLUG, MALE PIPE W/INTERNAL HEX - C3169 x 8 |
| 4 | 2 | 0037-217 | ADAPTER, HOSE END 90° BARB-6 TO MALE PIPE-4 |
| 5 | 1 | 0039-027 | RETURN FILTER |
| 6 | 1 | 0039-121 | SUCTION STRAINER, NON PRESSURE |
| 7 | 1 | 0039-127 | BREATHER CAP, 5 PSI |
| 8 | 1 | 0039-130 | NON-VENTED CAP ASSEMBLY |
| 9 | 1 | 0039-239 | TANK STRUCTURE |
| 10 | 1 | 0039-244 | SIGHT TUBE |
| 11 | 2 | 0039-245 | SIGHT TUBE CLIP |
| 12 | 1 | 0041-596 | STEEL COUPLING, .75 |
| 13 | 1 | 0041-808 | NIPPLE, CLOSE UP 2.00 NPT |
| 14 | 1 | 0041-846 | NIPPLE, COMBO 2.00 NPT x 2.00 HOSE |
| 15 | 1 | 0041-899 | NIPPLE, .75 NPT x 6.00 |
| 16 | 1 | 0041-998 | STREET EL, 2.00 NPT |

SECTION 3

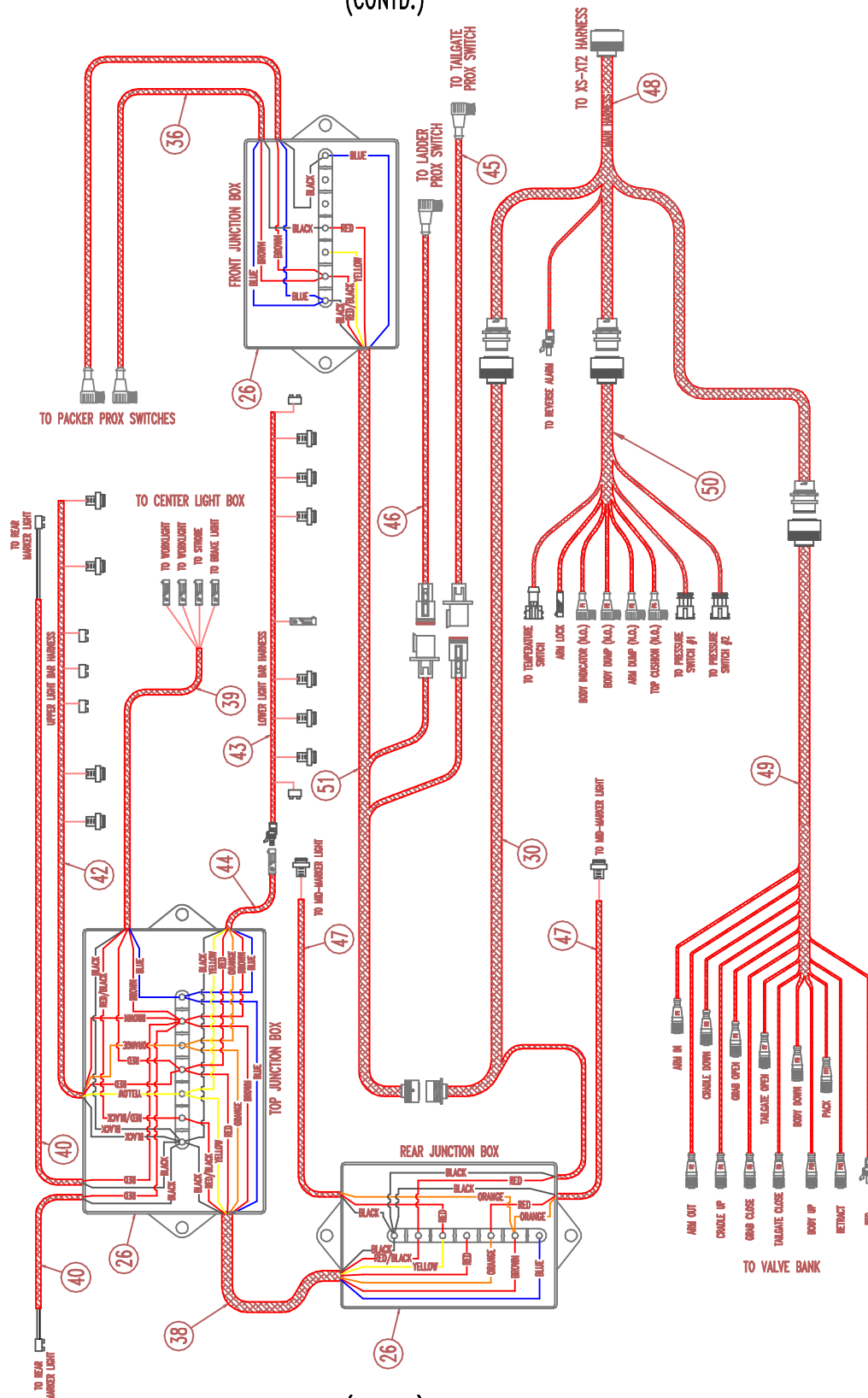
ELECTRICAL MDM

| | |
|--------------------------------------|----------|
| ELECTRICAL SCHEMATIC | |
| MDM ELECTRICAL SYSTEM | 3-1, 3-4 |
| WIRING HARNESSSES | |
| TAILGATE HARNESS | 3-5 |
| ROCKER PANEL HARNESS | 3-6 |
| ROCKER PANEL EXT. HARNESS | 3-7 |
| MDM HARNESS | 3-8 |
| MDM EXT. HARNESS | 3-9 |
| JOYSTICK EXT. HARNESS | 3-10 |
| PACKER PROX. SWITCH CABLE | 3-11 |
| OPTIONAL KEY SWITCH HARNESS | 3-12 |
| DUAL JUNCT. BOX HARNESS | 3-13 |
| CENTER LIGHT HARNESS | 3-14 |
| REAR MARKER LIGHT HARNESS | 3-15 |
| XS-XT2 HARNESS | 3-16 |
| UPPER LIGHTBAR W/BRAKE LIGHT HARNESS | 3-17 |
| TAILGATE W/BRAKE LIGHT HARNESS | 3-18 |
| TAILGATE TUBE HARNESS | 3-19 |
| TAILGATE PROX. SWITCH CABLE | 3-20 |
| LADDER PROX. SWITCH CABLE | 3-21 |
| MID MARKER LIGHT HARNESS | 3-22 |
| MAIN HARNESS | 3-23 |
| VALVE BANK HARNESS | 3-24 |
| SLIDE PROX. SWITCH CABLE | 3-25 |
| BODY HARNESS | 3-26 |
| LIGHTS | |
| BODY LIGHTS | 3-27 |
| TAILGATE LIGHTS | 3-28 |
| ALARM | 3-29 |
| JOYSTICK | 3-30 |
| PROXIMITY SWITCHES | 3-31 |

(CONTD.)
PAGE 3-1



(CONTD.)
PAGE 3-2



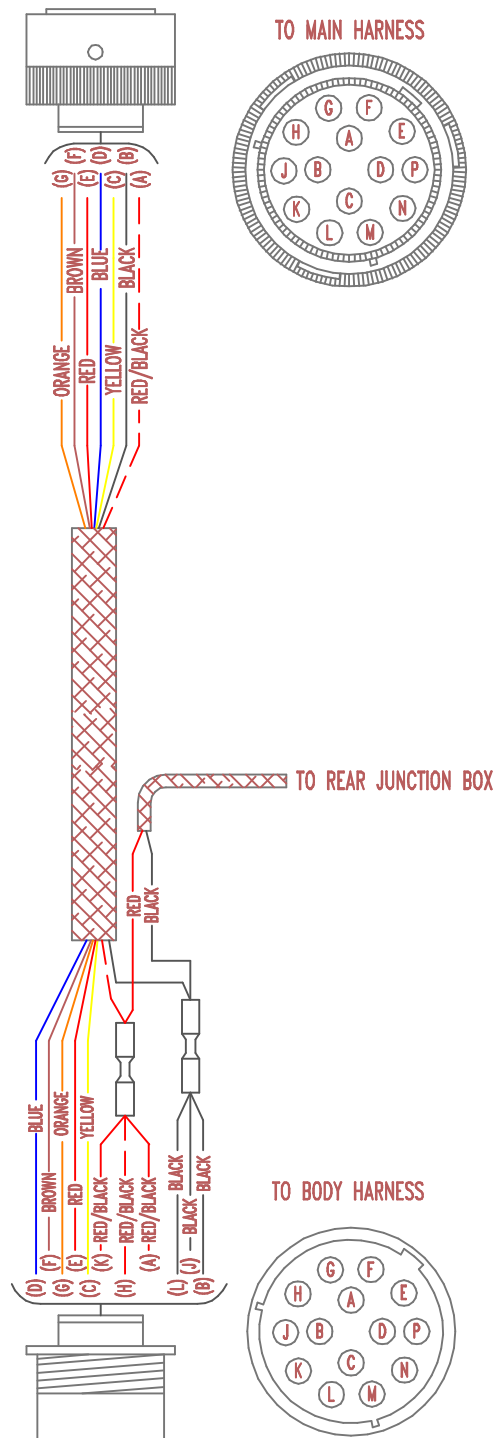
ELECTRICAL SCHEMATIC
MDM ELECT. SYSTEM AG-FE P.N. 0602-955
(CONTD.)

| ITEM | QTY | P/N | DESCRIPTION |
|------|------|----------|--|
| 1 | 1 | 0053-288 | SOLDER SLEEVE, .38 RING TERMINAL 16-14 |
| 2 | 1 | 0053-298 | SOLDER SLEEVE, FEMALE 16-14 |
| 3 | 3 | 0053-310 | TERMINAL CRIMP |
| 4 | 4 | 0053-311 | TERMINAL, 16-14 PIGGY-BACK PUSH ON |
| 5 | 11 | 0053-325 | VINYL-INSULATED, FEMALE 16-14 |
| 6 | 1 | 0053-636 | FUSE, ATC 5 AMP |
| 7 | 2 | 0053-671 | FUSE, ATC 20 AMP |
| 8 | 2 | 0054-005 | PROXIMITY SWITCH, N.O. (NOT SHOWN) |
| 9 | 1 | 0054-027 | SWITCH, RED PUSH/PULL |
| 10 | 1 | 0054-031 | SOCKET, RELAY |
| 11 | 2 | 0054-043 | ROCKER SWITCH, LABELED "GATE" |
| 12 | 1 | 0054-044 | ROCKER SWITCH LABELED "BODY" |
| 13 | 1 | 0054-120 | RELAY, 12-V W/DIODE |
| 14 | 1 | (REF.) | JOYSTICK |
| 15 | 74" | 0056-003 | WIRE, 18 GA. RED |
| 16 | 18" | 0056-011 | WIRE, 18 GA. BLACK |
| 17 | 4.0" | 0056-033 | WIRE, 18 GA. ORANGE/RED |
| 18 | 18" | 0056-047 | WIRE, 18 GA. RED/BLACK |
| 19 | 2" | 0056-054 | WIRE, 18 GA. BROWN/BLACK |
| 20 | 18" | 0056-061 | WIRE, 18 GA. BLACK/BLUE |
| 21 | 2" | 0056-062 | WIRE, 18 GA. YELLOW |
| 22 | 1 | 0059-117 | PILOT LIGHT, RED |
| 23 | 1 | 0059-144 | PILOT LIGHT, YELLOW |
| 24 | 3 | 0059-185 | BRACKET, SWITCH CENTER (NOT SHOWN) |
| 25 | 2 | 0059-186 | BRACKET, SWITCH END (NOT SHOWN) |
| 26 | 3 | 0059-249 | JUNCTION BOX, 7 TERMINAL |
| 27 | 1 | 0059-330 | IQAN MDM |
| 28 | 1 | 0059-332 | IQAN EXPANSION MODULE XS |
| 29 | 1 | 0059-334 | IQAN EXPANSION XT2 |
| 30 | 1 | 0602-884 | TAILGATE HARNESS |
| 31 | 1 | 0602-927 | ROCKER PANEL HARNESS |
| 32 | 1 | 0602-928 | ROCKER PANEL EXTENSION HARNESS |
| 33 | 1 | 0602-929 | MDM HARNESS |
| 34 | 1 | 0602-930 | MDM EXT. HARNESS |
| 35 | 1 | 0602-940 | JOYSTICK EXT. HARNESS |
| 36 | 2 | 0602-933 | PACKER PROX. SWITCH CABLE |
| 37 | 1 | 0602-934 | KEY SWITCH HARNESS |
| 38 | 1 | 0602-935 | DUAL JUNCT. BOX HARNESS |
| 39 | 1 | 0602-936 | CENTER LIGHT HARNESS |
| 40 | 2 | 0602-937 | REAR MARKER LIGHT HARNESS |
| 41 | 1 | 0602-938 | XS-XT2 HARNESS |
| 42 | 1 | 0602-942 | WIRING HARNESS, UPPER LIGHTBAR W/BRAKE LIGHT |
| 43 | 1 | 0602-945 | WIRING HARNESS, TAILGATE W/BRAKE LIGHT |
| 44 | 1 | 0602-946 | TAILGATE TUBE HARNESS |
| 45 | 1 | 0602-947 | TAILGATE PROX. SWITCH CABLE |
| 46 | 1 | 0602-948 | LADDER PROX. SWITCH CABLE |
| 47 | 2 | 0602-949 | WIRING HARNESS, MID MARKER LIGHT |
| 48 | 1 | 0602-984 | MAIN HARNESS |

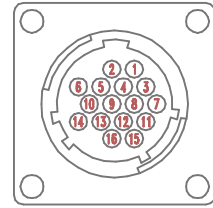
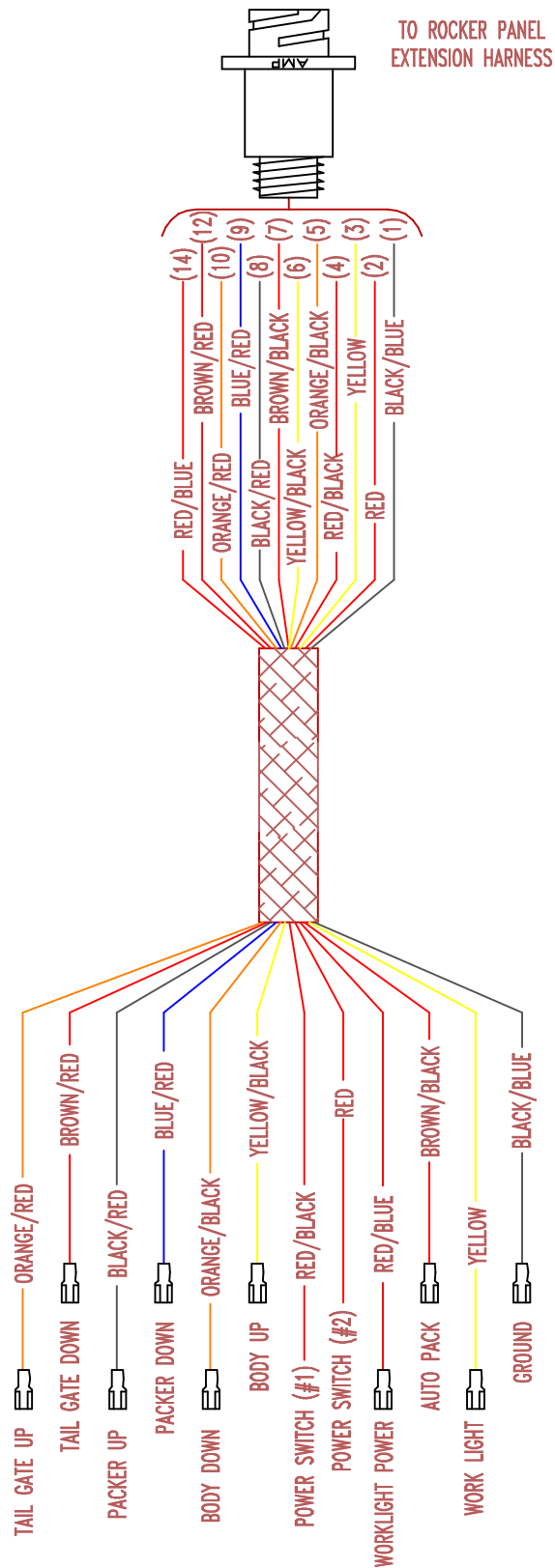
ELECTRICAL SCHEMATIC
MDM ELECT. SYSTEM AG-FE P.N. 0602-955
(CONTD.)

| ITEM | QTY | P/N | DESCRIPTION |
|------|-----|----------|---------------------------------|
| 49 | 1 | 0602-985 | VALVE BANK HARNESS |
| 50 | 1 | 0602-986 | SLIDE PROX. SWITCH CABLE |
| 51 | 1 | 0602-987 | BODY HARNESS |
| 52 | 1 | 0751-180 | MOUNT PANEL |
| 53 | 1 | 0059-259 | FUSE PANEL, 6 SOCKET BLADE TYPE |
| 54 | 1 | 0053-655 | FUSE, ATC 10 AMP |
| 55 | 2" | 0056-036 | WIRE, 18 GA. YELLOW/BLACK |

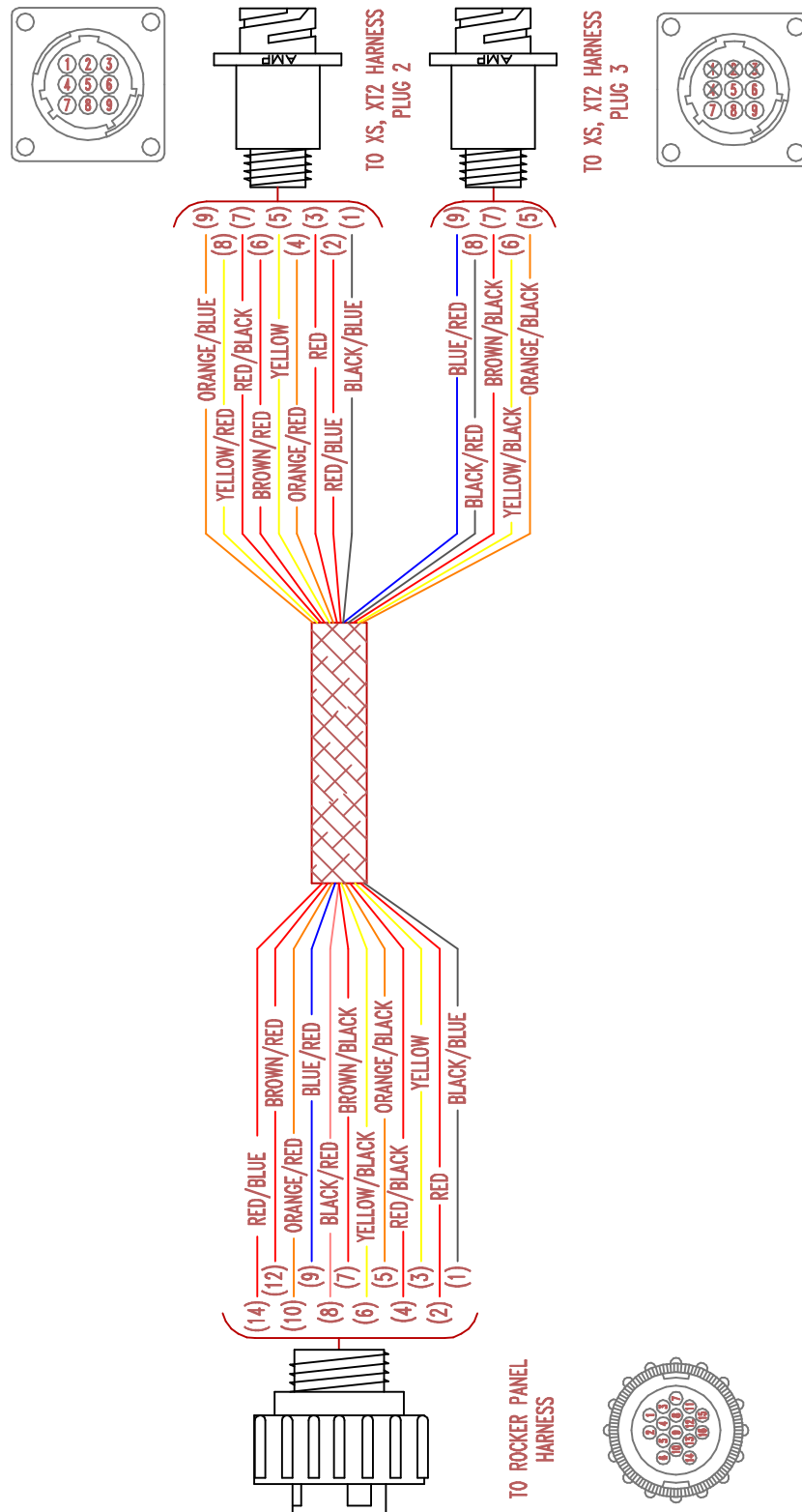
ELECTRICAL SCHEMATIC TAILGATE HARNESS (MDM) P.N. 0602-884



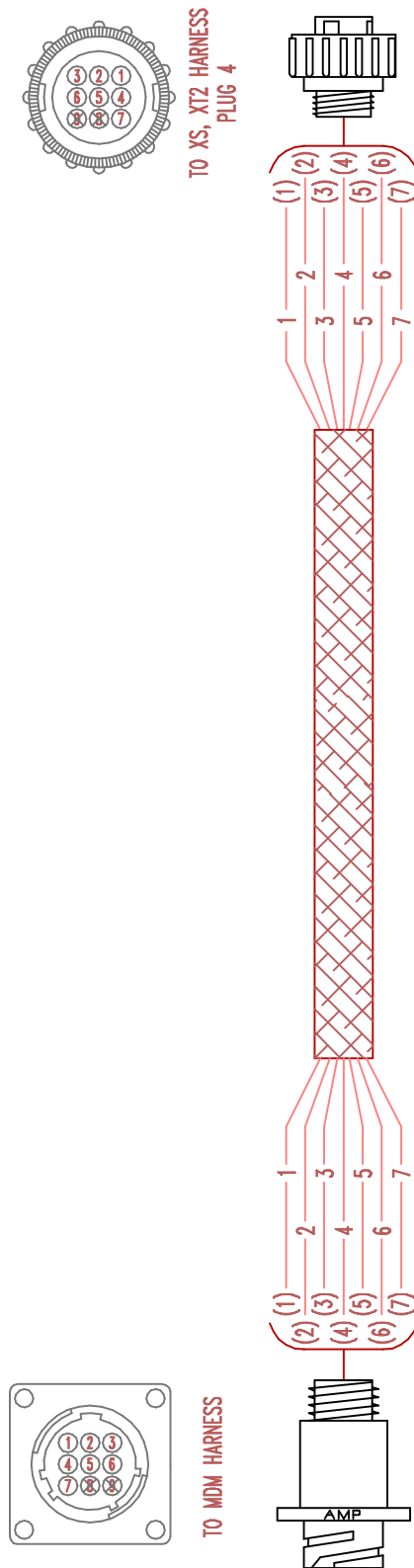
ELECTRICAL SCHEMATIC ROCKER PANEL HARNESS (MDM) P.N. 0602-927



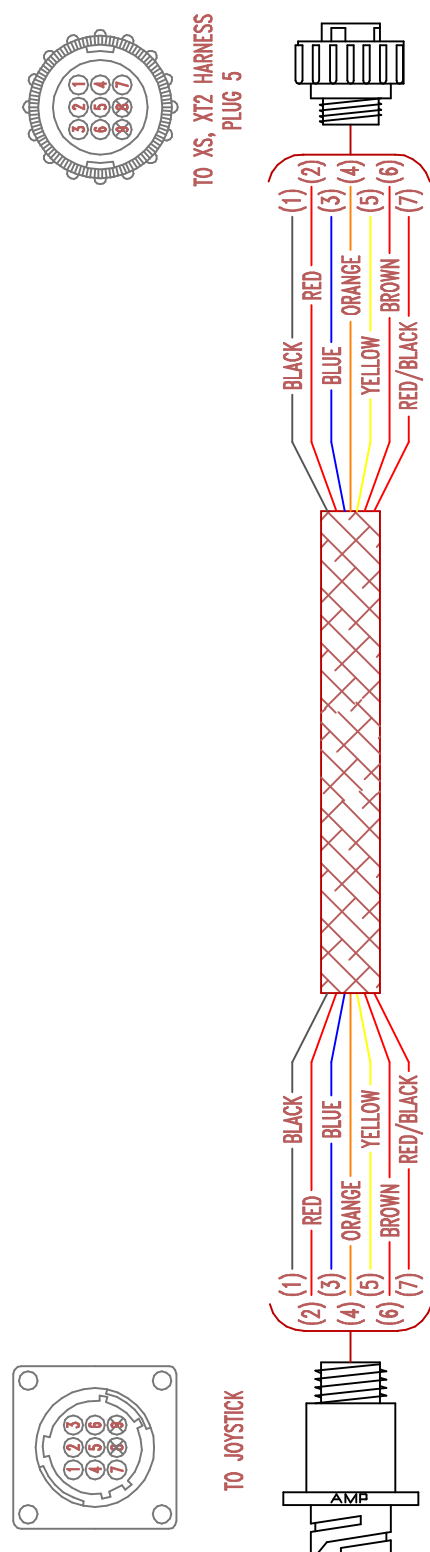
ELECTRICAL SCHEMATIC ROCKER PANEL EXT. HARNESS (MDM) P.N. 0602-928



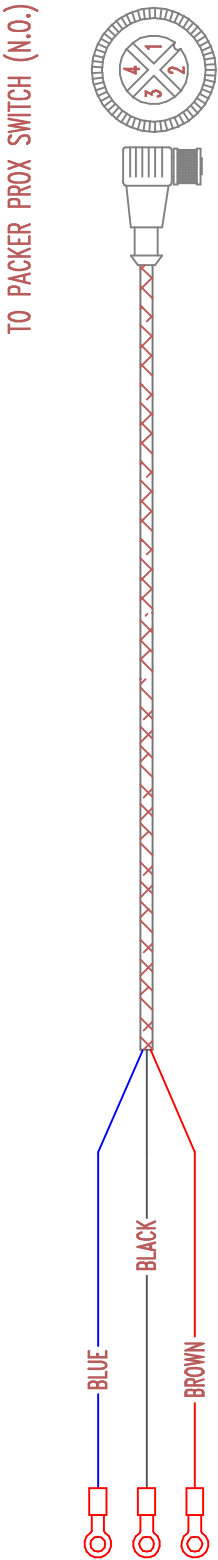
ELECTRICAL SCHEMATIC MDM EXT. HARNESS (MDM) P.N. 0602-930



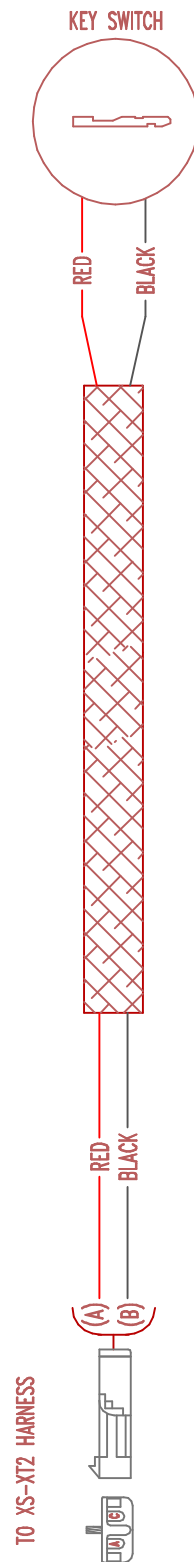
ELECTRICAL SCHEMATIC JOYSTICK EXT. HARNESS (MDM) P.N. 0602-940



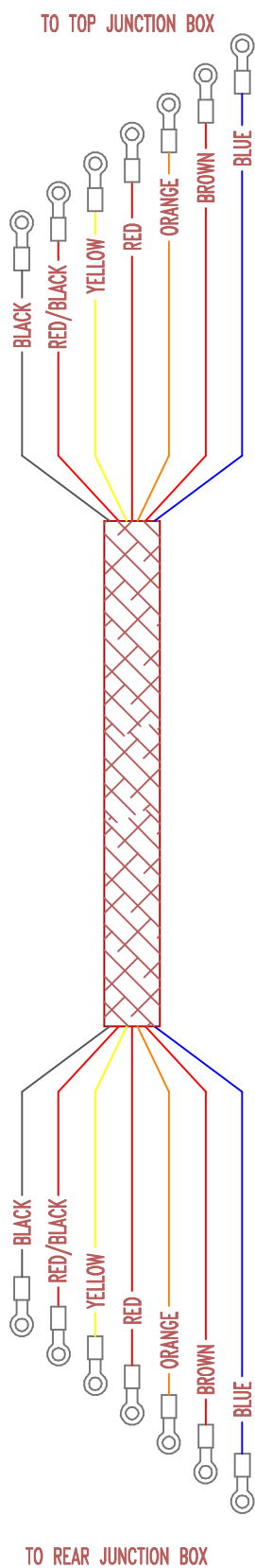
ELECTRICAL SCHEMATIC
PACKER PROX. SWITCH CABLE (MDM) P.N. 0602-933



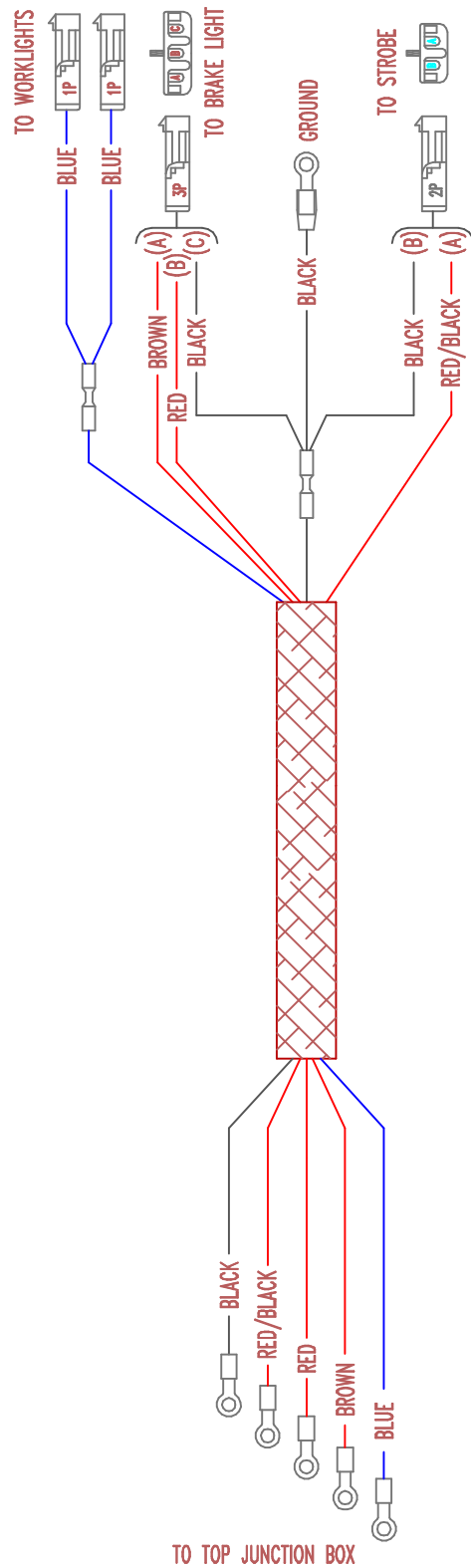
ELECTRICAL SCHEMATIC
KEY SWITCH HARNESS (MDM) P.N. 0602-934



ELECTRICAL SCHEMATIC
DUAL JUNCT. BOX HARNESS (MDM) P.N. 0602-935

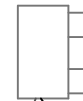


ELECTRICAL SCHEMATIC CENTER LIGHT HARNESS (MDM) P.N. 0602-936



ELECTRICAL SCHEMATIC
REAR MARKER LIGHT HARNESS (MDM) P.N. 0602-937

TO MARKER LIGHT



BLACK
WHITE



RED
BLACK



BLACK



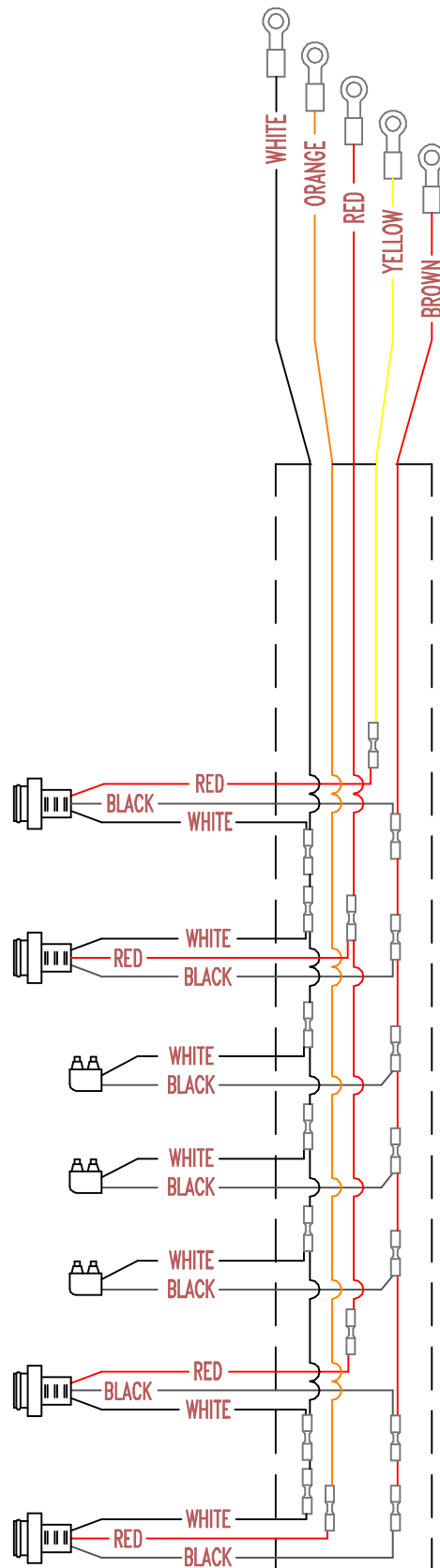
RED



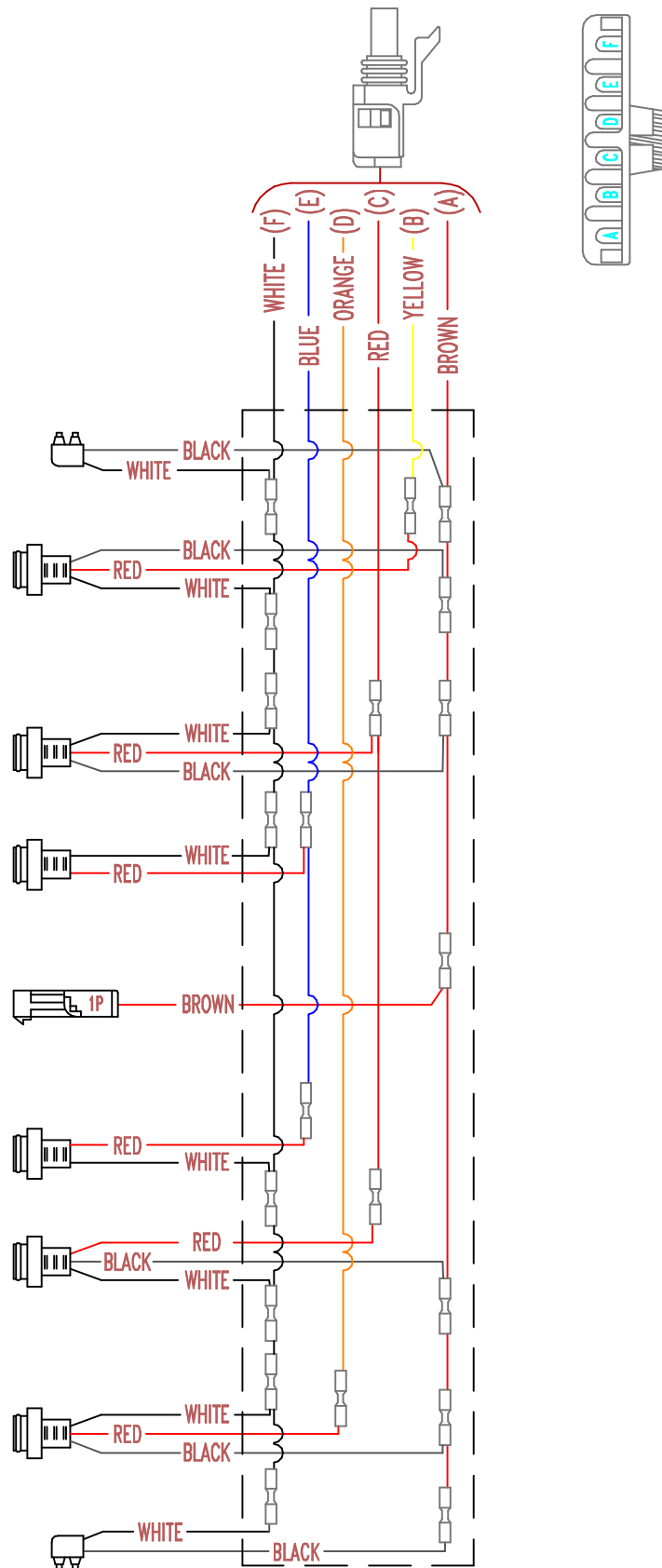
TO TOP JUNCTION BOX



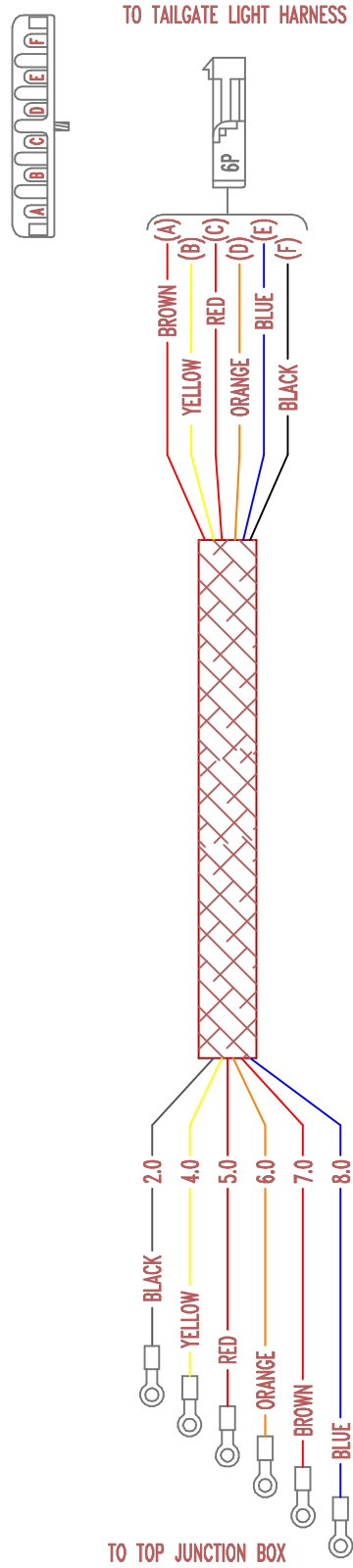
ELECTRICAL SCHEMATIC
UPPER LIGHT BAR HARNESS (MDM) P.N. 0602-942



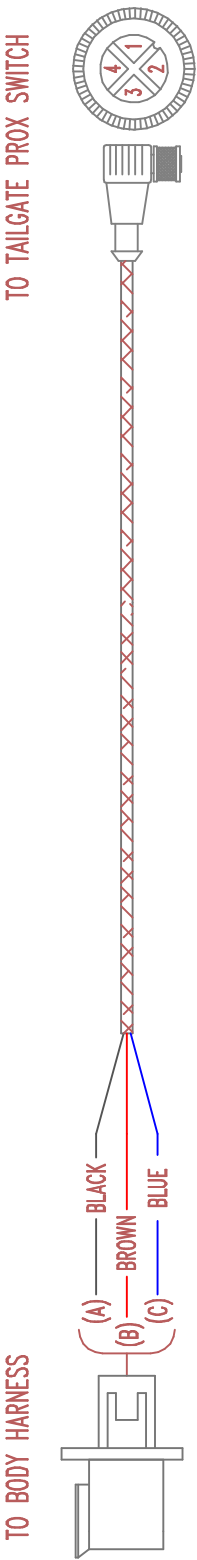
ELECTRICAL SCHEMATIC TAILGATE HARNESS (MDM) P.N. 0602-945



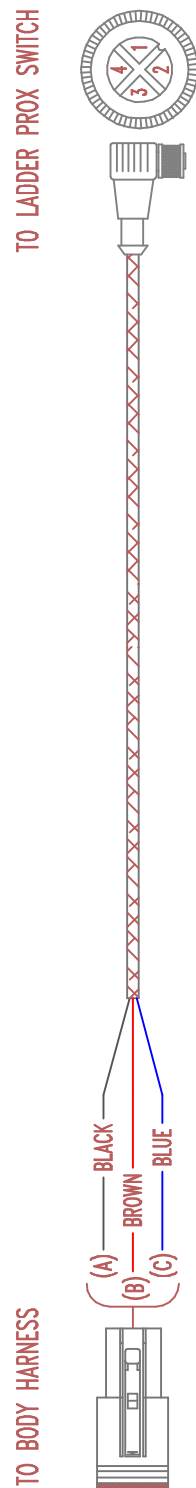
ELECTRICAL SCHEMATIC
TAILGATE TUBE HARNESS (MDM) P.N. 0602-946



ELECTRICAL SCHEMATIC
TAIL PROX. SWITCH CABLE (MDM) P.N. 0602-947

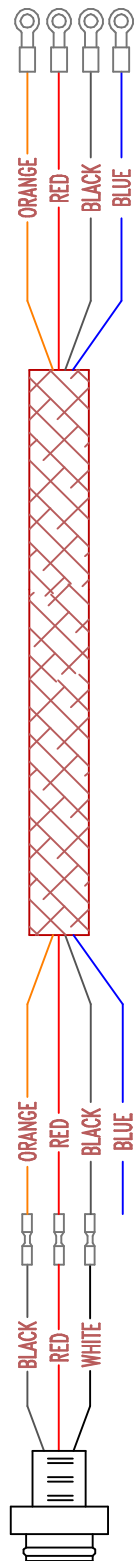


ELECTRICAL SCHEMATIC
LADDER PROX. SWITCH CABLE (MDM) P.N. 0602-948

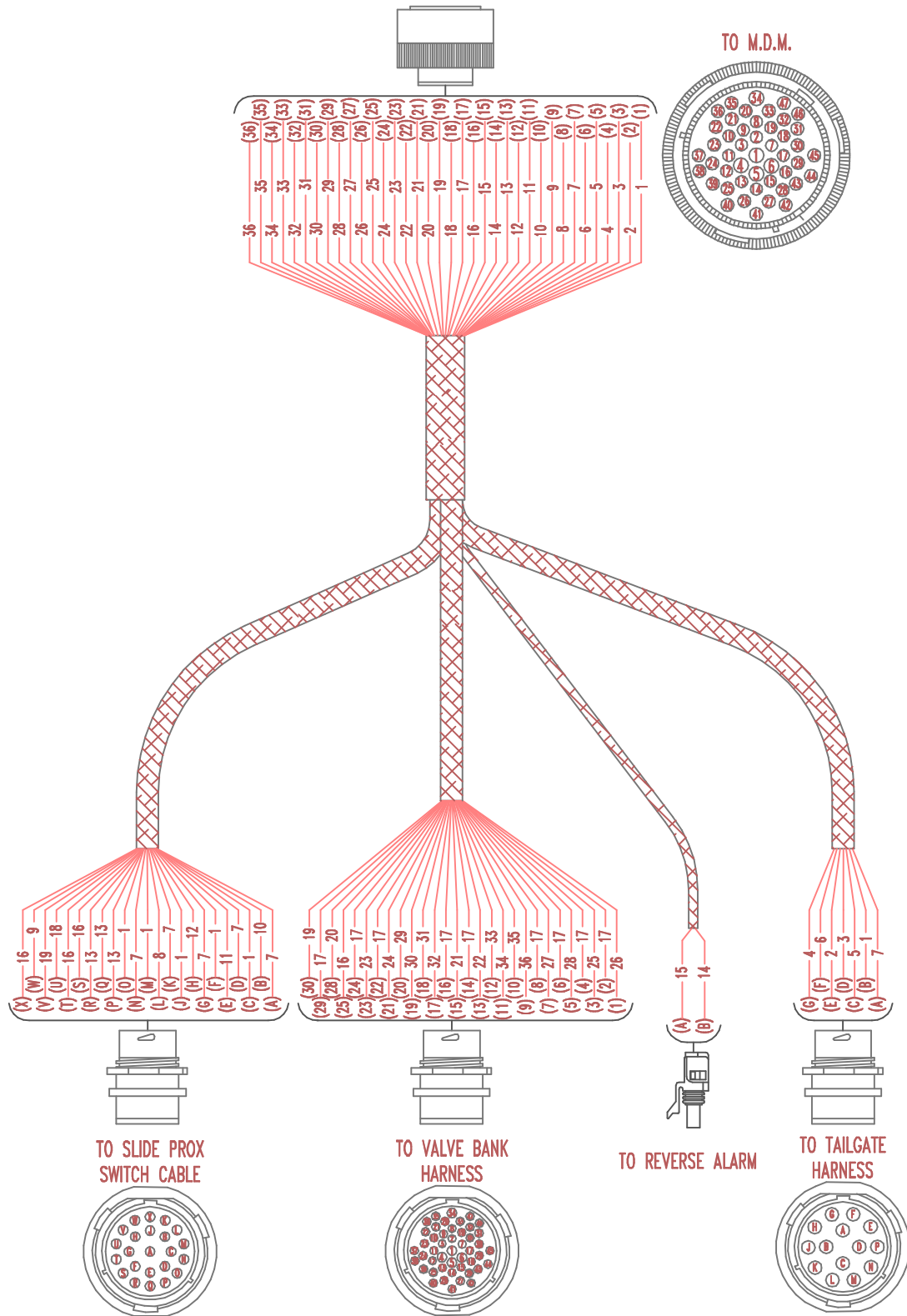


ELECTRICAL SCHEMATIC
MID MARKER LIGHT HARNESS (MDM) P.N. 0602-949

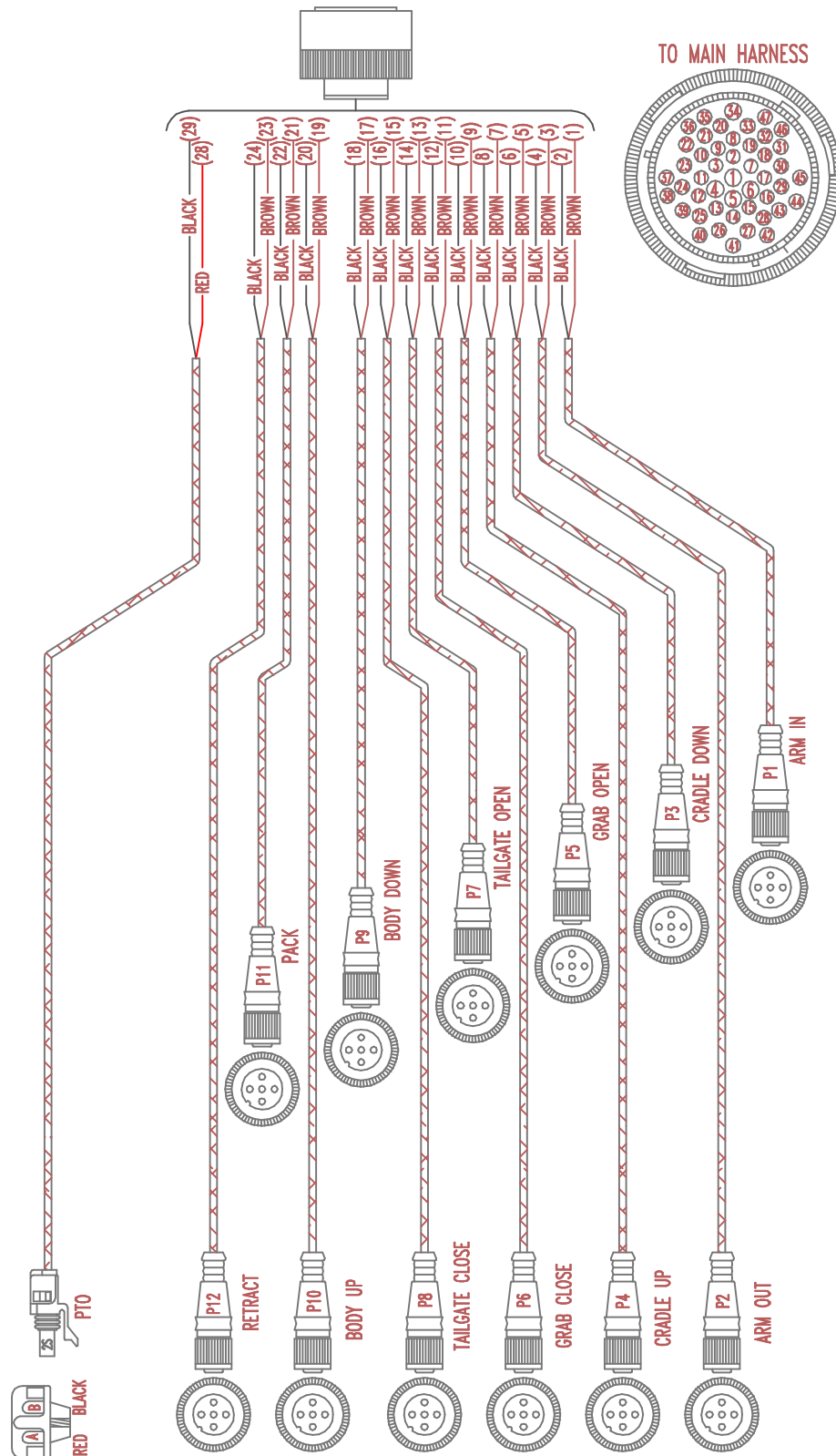
TO REAR JUNCTION BOX



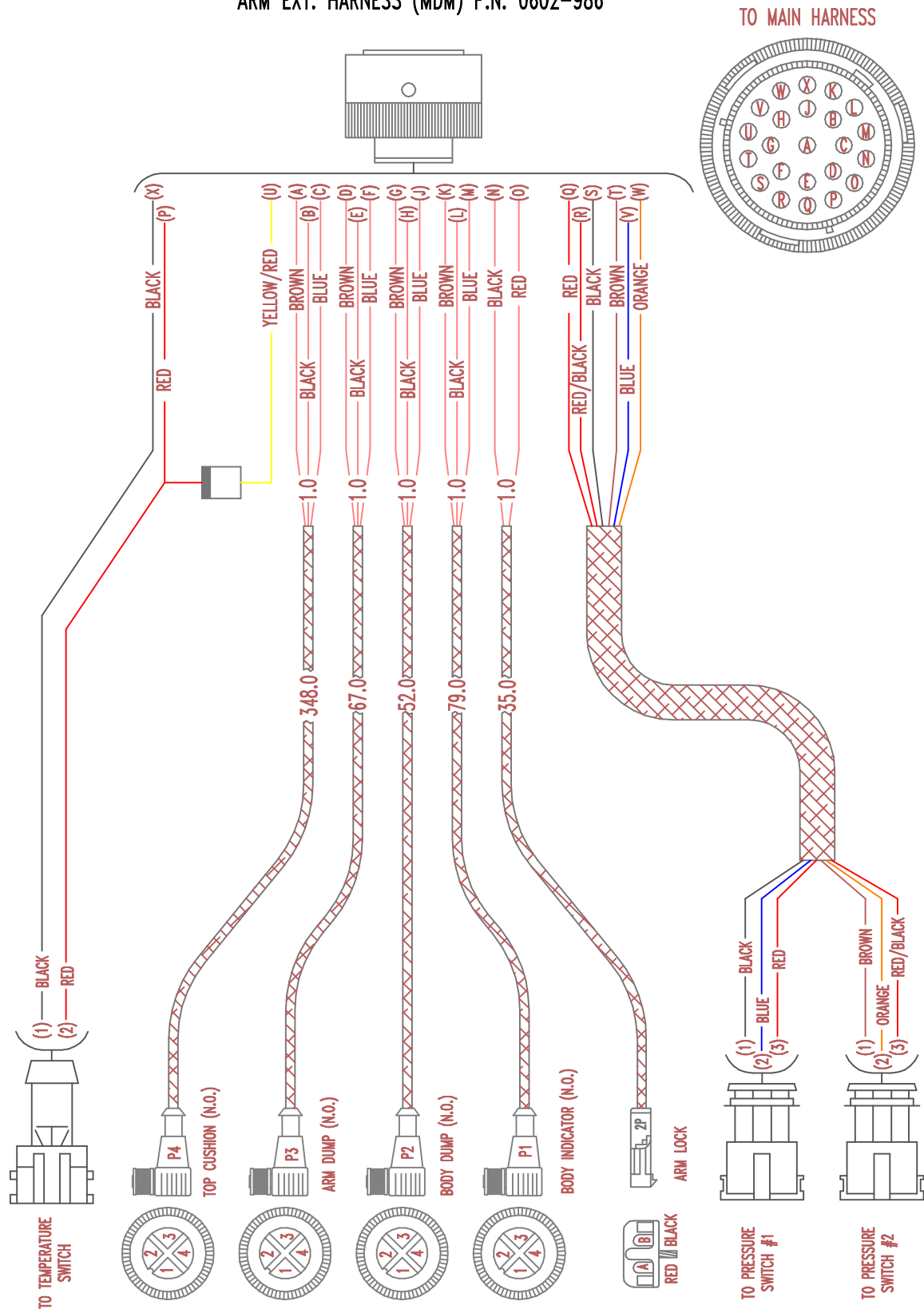
ELECTRICAL SCHEMATIC MAIN HARNESS (MDM) P.N. 0602-984



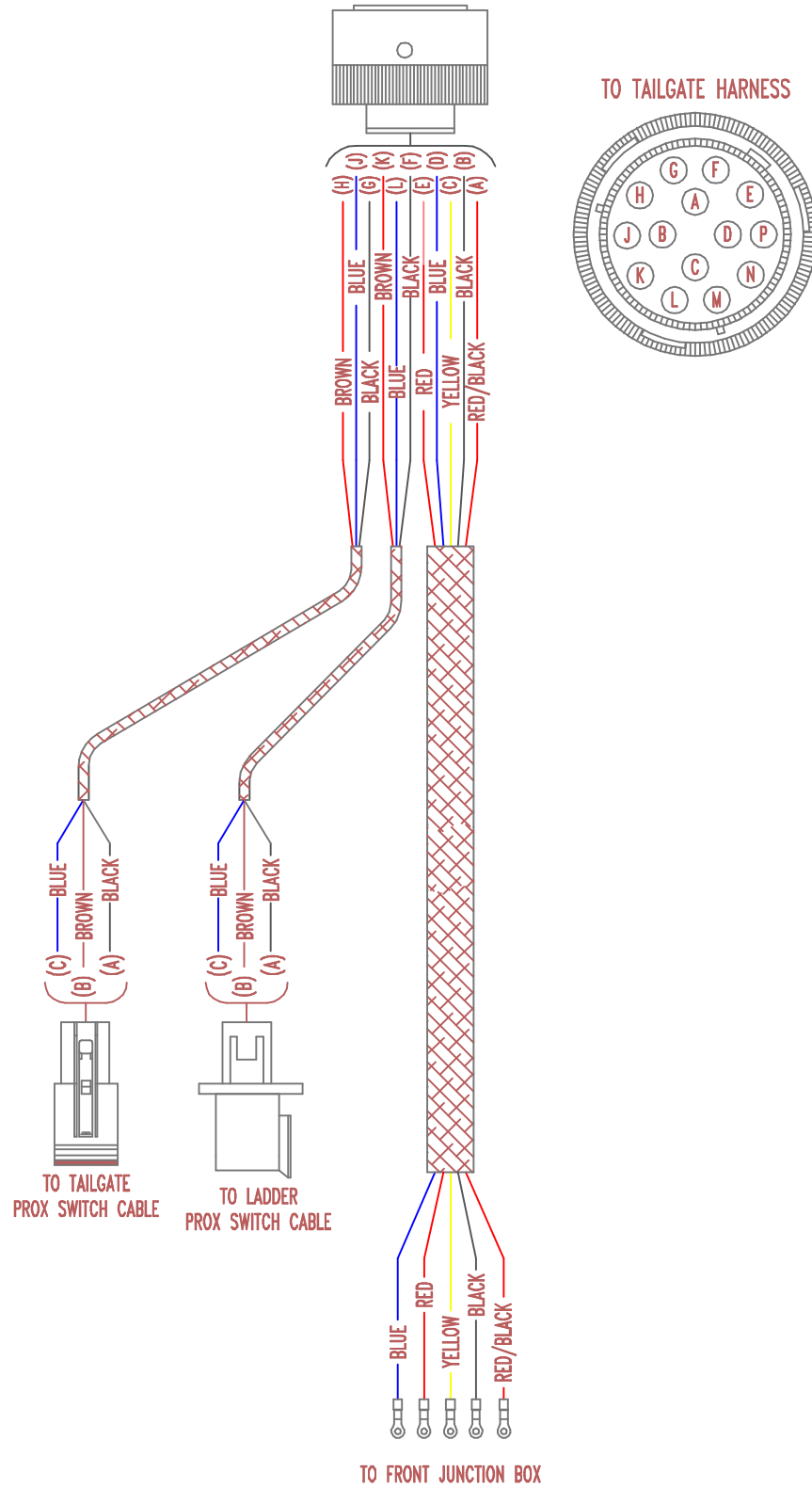
ELECTRICAL SCHEMATIC VALVE HARNESS (MDM) P.N. 0602-985



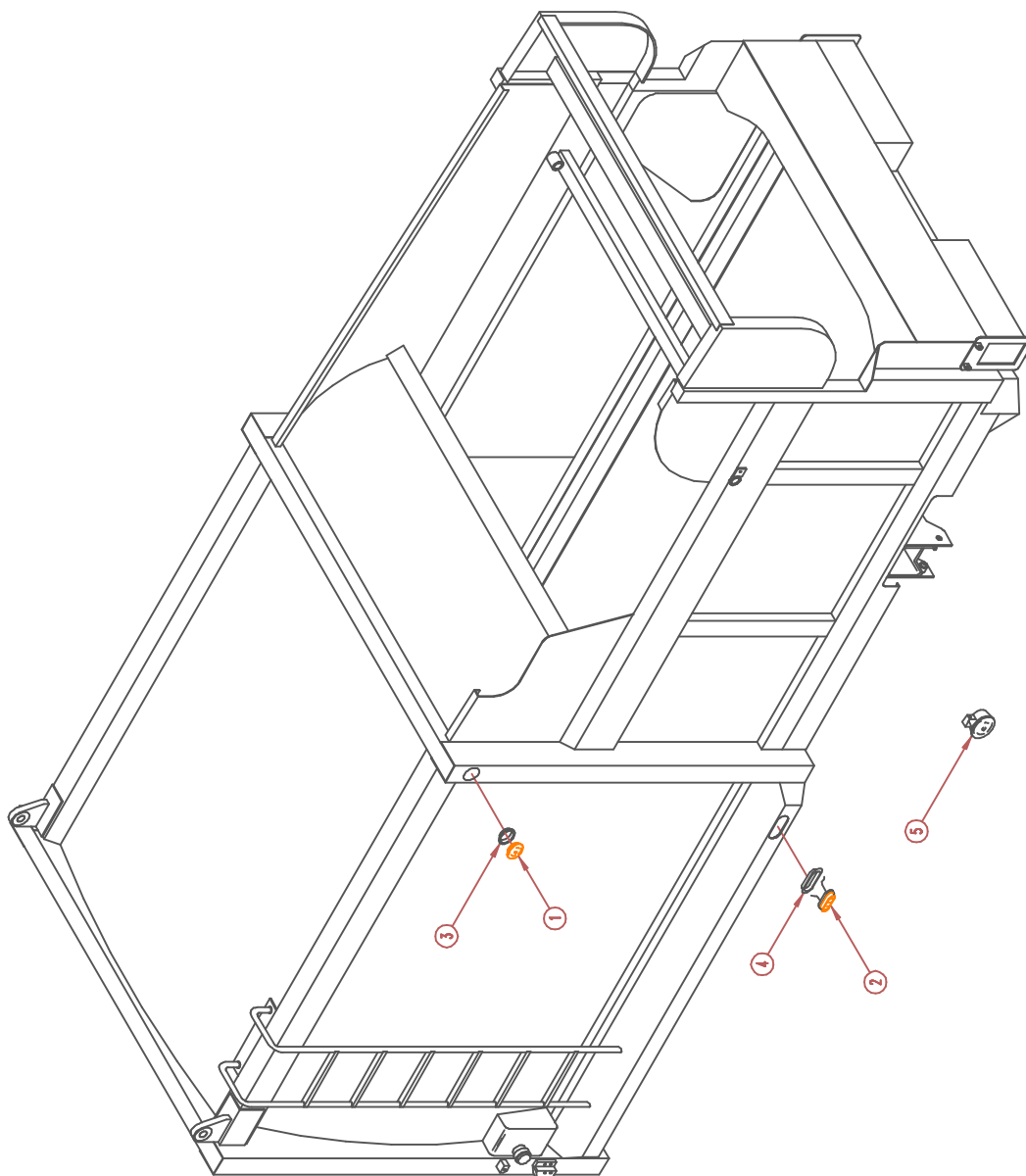
ELECTRICAL SCHEMATIC ARM EXT. HARNESS (MDM) P.N. 0602-986



ELECTRICAL SCHEMATIC BODY HARNESS (MDM) P.N. 0602-987

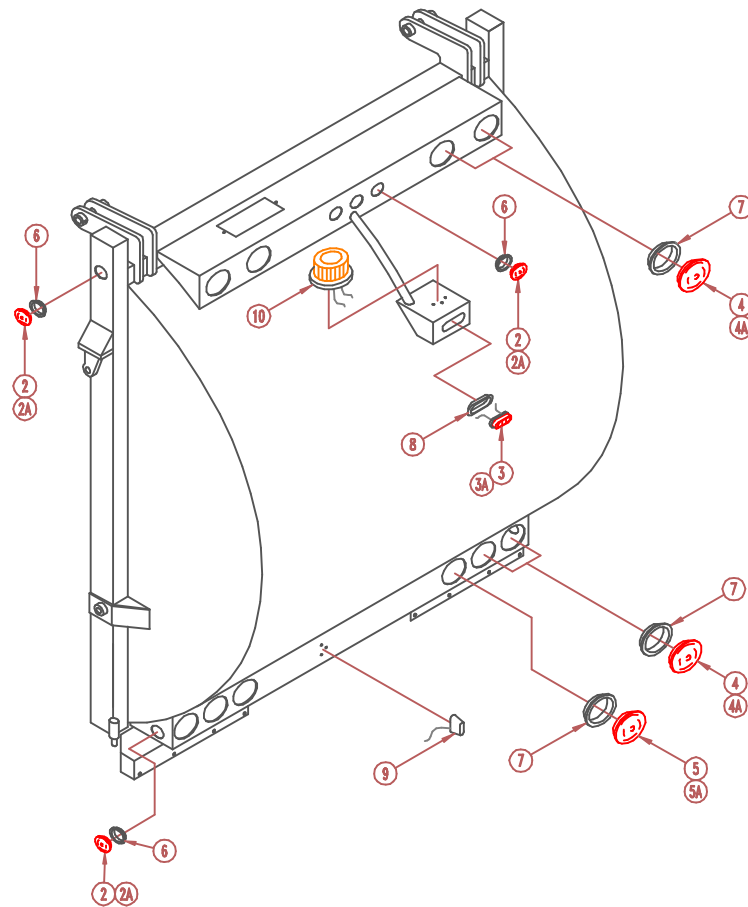


BODY LIGHTS



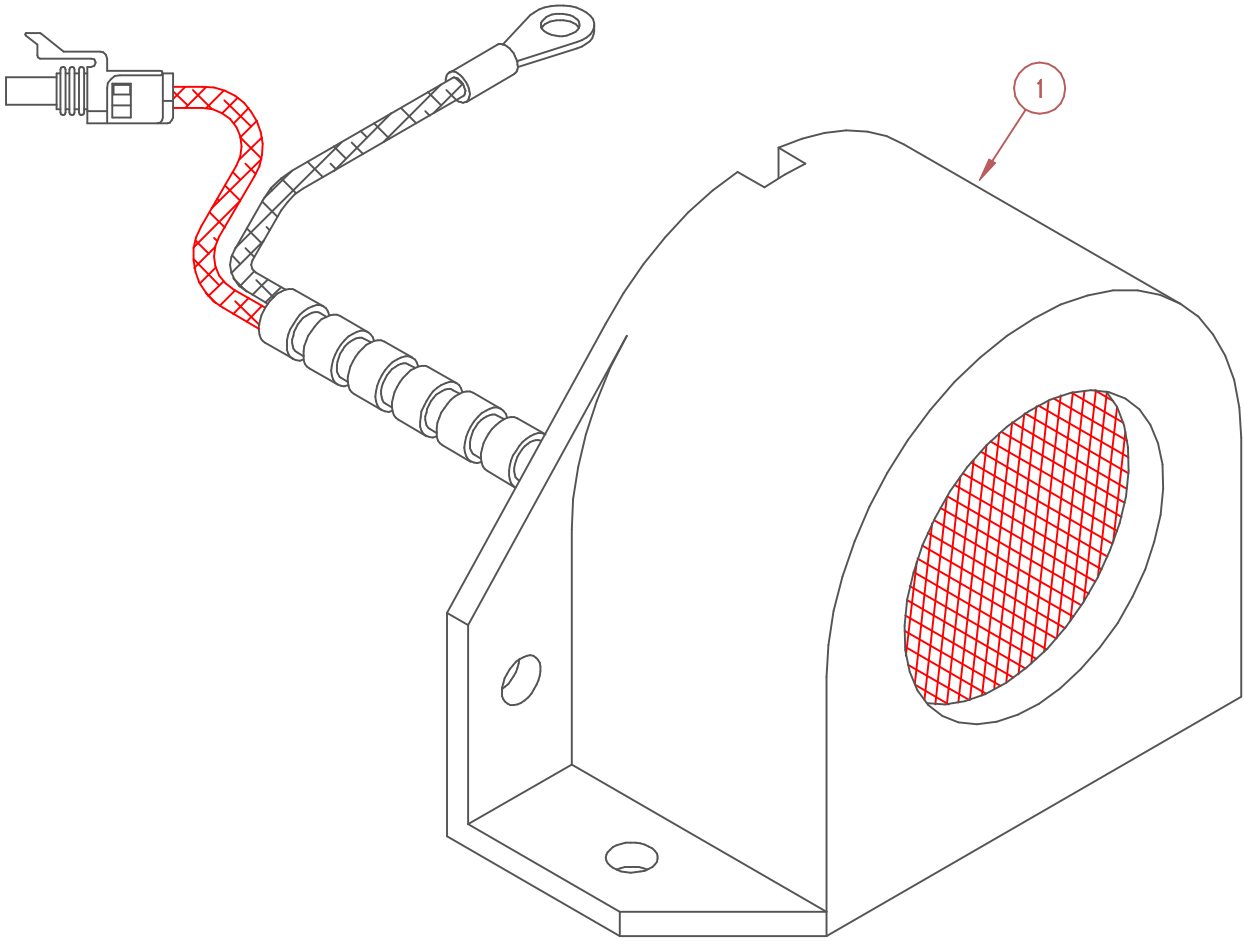
| ITEM | QTY | P/N | DESCRIPTION |
|------|-----|----------|-------------------------------------|
| 1 | 2 | 0050-017 | CLEARANCE LIGHT, AMBER LED |
| 2 | 2 | 0050-101 | CLEARANCE MARKER LIGHT, AMBER, OVAL |
| 3 | 2 | 0050-350 | GROMMET KIT, 2.50 RECESSED |
| 4 | 2 | 0050-353 | GROMMET, 2.25 x 6.50 OVAL RECESSED |
| 5 | - | 0055-003 | WORK LIGHT ASSEMBLY (OPTIONAL) |

TAILGATE LIGHTS



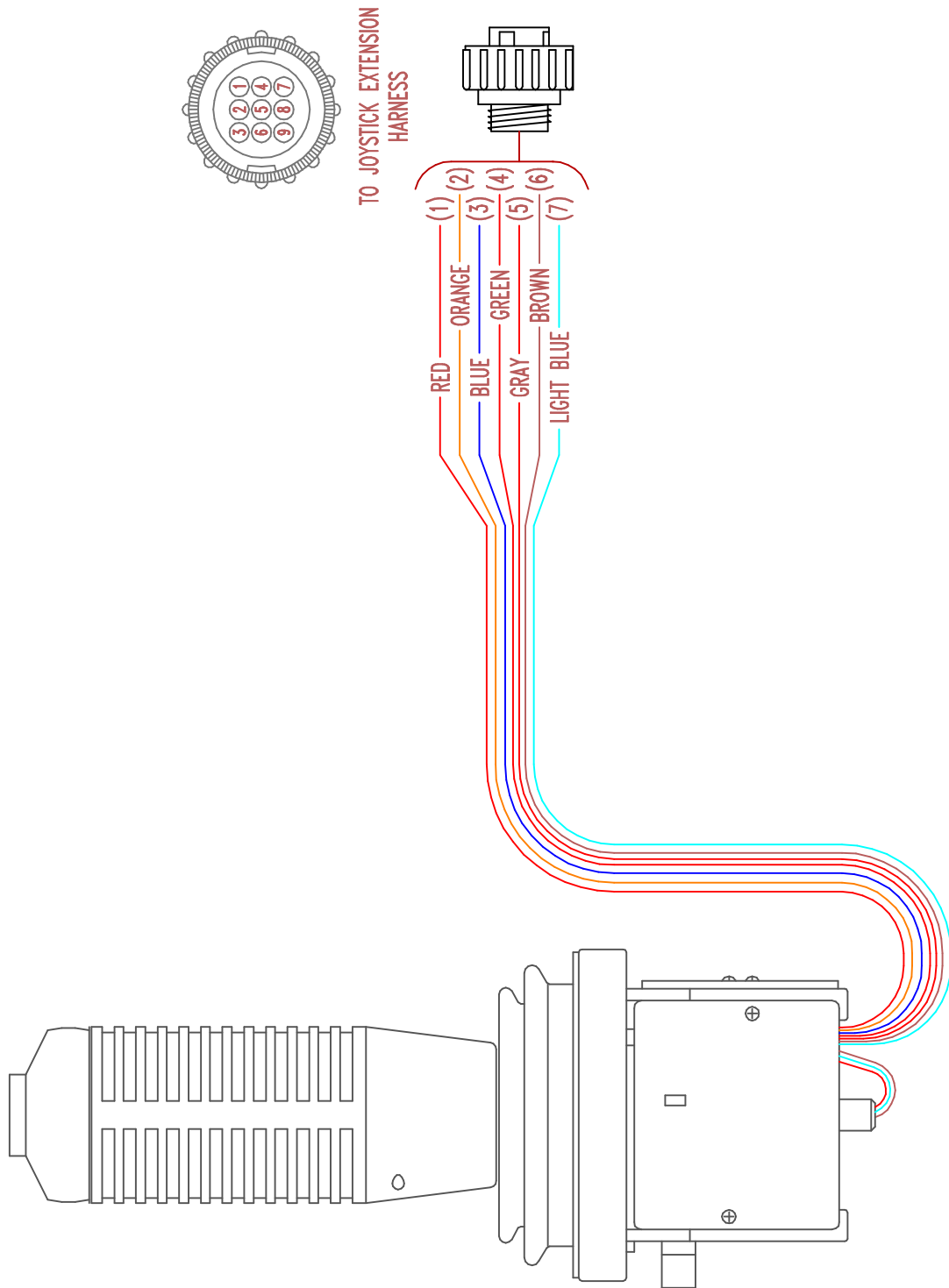
| ITEM | QTY | P/N | DESCRIPTION |
|------|-----|----------|--|
| 1 | 1 | (REF.) | TAILGATE |
| 2 | 7 | 0050-007 | CLEARANCE LIGHT ASSEMBLY, RED (INCLUDES GROMMET) |
| 2A | 7 | 0050-018 | CLEARANCE LIGHT, RED LED |
| 3 | 1 | 0050-116 | STOP LAMP ASSEMBLY, OVAL (INCLUDES GROMMET) |
| 3A | 1 | 0050-022 | STOP LAMP, OVAL LED |
| 4 | 8 | 0050-135 | STOP/TURN LAMP ASSEMBLY (INCLUDES GROMMET) |
| 4A | 8 | 0050-112 | STOP/TURN LAMP LED |
| 5 | 2 | 0050-181 | BACKUP LAMP ASSEMBLY (INCLUDES GROMMET) |
| 5A | 2 | 0050-185 | BACKUP LAMP LED |
| 6 | 7 | 0050-350 | GROMMET KIT, 2.50 RECESSED |
| 7 | 10 | 0050-351 | GROMMET, 4.25 RECESSED |
| 8 | 1 | 0050-353 | GROMMET, 2.25 x 6.50 OVAL RECESSED |
| 9 | 1 | 0055-004 | TAG LIGHT ASSEMBLY |
| 10 | 1 | 0055-005 | STROBE LIGHT ASSEMBLY |

ALARM



| ITEM | QTY | P/N | DESCRIPTION |
|------|-----|----------|-----------------------|
| 1 | 1 | 0055-201 | BACKUP ALARM ASSEMBLY |

ELECTRICAL SCHEMATIC
STANDARD JOYSTICK (MDM) P.N. 0602-939



PROXIMITY SWITCH



| ITEM | QTY | P/N | DESCRIPTION |
|------|-----|----------|------------------------|
| 1 | 1 | 0054-005 | PROXIMITY SWITCH, N.O. |

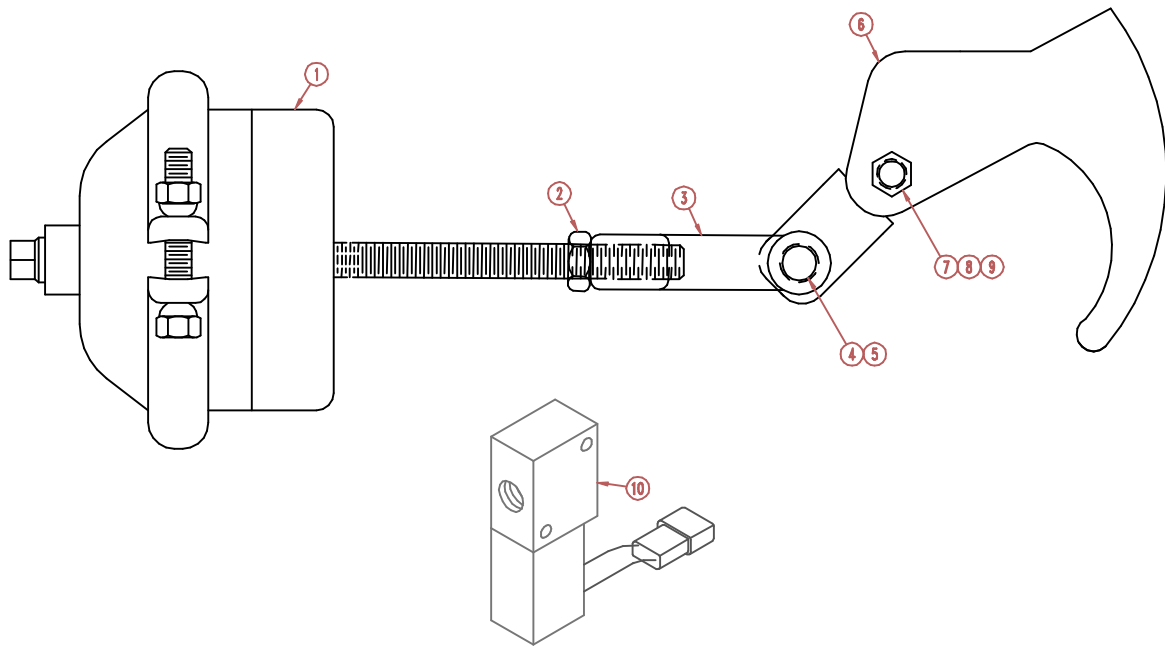
SECTION 4

AIR

LOADER LOCK

4-1

LOADER LATCH



| ITEM | QTY | P/N | DESCRIPTION |
|------|-----|----------|----------------------------|
| 1 | 1 | 0085-768 | CHAMBER, AIR |
| 2 | 1 | 0065-650 | NUT, .50-13NC HEX JAM |
| 3 | 1 | 0043-001 | YOKE, .50NF ADJUSTABLE |
| 4 | 1 | 0040-012 | PIN, .50 YOKE |
| 5 | 1 | 0040-504 | PIN, .19 X 1.50 COTTER |
| 6 | 1 | 0750-884 | STR., MAST LATCH |
| 7 | 1 | 0060-461 | CAPSCREW, .38-16NC X 3.00 |
| 8 | 2 | 0066-033 | WASHER, .38 FLAT |
| 9 | 1 | 0065-180 | HEX NUT, .38-16NC (NYLOCK) |
| 10 | 1 | 0055-202 | AIR SOLENOID ASSY. |

SECTION 5

MAINTENANCE GUIDE

| | |
|-----------------------|-----|
| LUBRICATION | 5-1 |
| CLEANING | 5-2 |
| MECHANICAL INSPECTION | 5-3 |
| OPERATION INSPECTION | 5-4 |
| HYDRAULIC SYSTEM | 5-5 |



Alley- Gator Maintenance Guide

| Lubrication | | | | | | | | | | |
|-------------|------|---|-----------|------------|--------|--------|---------|---------|---------|----------|
| | Item | Description | Pre- Trip | @ Landfill | 10 Hrs | 50 Hrs | 100 Hrs | 250 Hrs | 500 Hrs | 1000 Hrs |
| | 1 | Automated Arm: Inspect Level in Auto Grease Reservoir | | | X | | | | | |
| | 2 | Automated Arm: Fill Auto Grease Reservoir to Max | | | | X | | | | |
| | 3 | Packer Panel Cylinder Pins (4) | | | X | | | | | |
| | 4 | Packer follower cam rollers | | | | X | | | | |
| | 5 | Tailgate: Hinge Pins (2) | | | | X | | | | |
| | 6 | Tailgate: Cylinder Pins (4) | | | | X | | | | |
| | 7 | Tailgate Latch Pins (2) | | | | X | | | | |
| | 8 | Tailgate: Latch Roller Pins (2) | | | | X | | | | |
| | 9 | Pump driveline U- Joints and Slip Yoke (3) | | | | X | | | | |
| | 10 | Inspect For Leaks In BODY Auto Grease System Plumbing | | | | X | | | | |
| | 11 | Inspect For Leaks In Packer Panel Auto/ Remote Grease Lines | | | | X | | | | |
| | 12 | Inspect Hydraulic Oil Level in Tank | | | X | | | | | |

This document is for reference and informational purposes only. Pendpac does not guarantee specific levels of product performance per this maintenance schedule. Product performance varies due to multiple factors including but not limited to weather, operating time, maintenance, driver operation, etc...

This document is subject to change with out notice



Alley- Gator Maintenance Guide

| Cleaning | | | | | | | | | | |
|----------|------|--|-----------|------------|--------|--------|---------|---------|---------|----------|
| | Item | Description | Pre- Trip | @ Landfill | 10 Hrs | 50 Hrs | 100 Hrs | 250 Hrs | 500 Hrs | 1000 Hrs |
| | 13 | Safety Decals | O | | | | | | | |
| | 14 | Mirrors, Lamps, Windows, Camera | O | | | | | | | |
| | 15 | Clear Debris at Tailgate Seal | | O | | | | | | |
| | 16 | Clear Contact Surfaces of Body and Chassis | | O | | | | | | |
| | 17 | Oversize Debris in Hopper (More often if required) | | | O | | | | | |
| | 18 | Wash Complete Body and Chassis (More often if required) | | | | O | | | | |

This document is for reference and informational purposes only. Pendpac does not guarantee specific levels of product performance per this maintenance schedule. Product performance varies due to multiple factors including but not limited to weather, operating time, maintenance, driver operation, etc...

This document is subject to change with out notice

O= Operator

M= Maintenance



Aley- Gator Maintenance Guide

| Mechanical Inspection (Truck at Rest) | | | | | | | | | |
|---|---|-----------|------------|--------|--------|---------|---------|---------|----------|
| Item | Description | Pre- Trip | @ Landfill | 10 Hrs | 50 Hrs | 100 Hrs | 250 Hrs | 500 Hrs | 1000 Hrs |
| <i>Inspect For Distortion, Cracks, And/ Or Unusual Wear. Ensure Mounting And Pin Retainer Bolts Are Intact And Tight.</i> | | | | | | | | | |
| 19 | Body Seated Flat on Chassis | O | | | | | M | | |
| 22 | Lift Carriage Assembly | O | | | | | M | | |
| 23 | Lift Carriage Rollers (4) | O | | | | | M | | |
| 24 | Lift Carriage Pivot Pins for Arms (2) | O | | | | | M | | |
| 25 | Slide Tube Bearings (6) | O | | | | | M | | |
| 26 | Packer Panel Cylinder Pins (4) and retaining Nuts/ Bolts | | | | | | M | | |
| 27 | Packer Panel Travel | O | | | | | M | | |
| 28 | Packer Panel Bushing | | | | | | | | M |
| 29 | Packer Panel 2 1/ 2" and 1" Arms (Check for cracks or fatigue at weld points) | | O | | | | M | | |
| 30 | Interior of Hopper and Main Body Walls, Floor and Roof | O | | | | | M | | |
| 31 | Exterior of Hopper and Main Body Walls, Floor and Roof | O | | | | | M | | |
| 32 | Ladder Assembly | O | | | | | M | | |
| 33 | Tailgate Assembly | O | | | | | M | | |
| 34 | Tailgate Cylinder Ears (4), Pins (4), and Retaining Hardware | O | | | | | M | | |
| 35 | Tailgate Latch Assembly (2), Pivots (2), and Roller Pins (2) | O | | | | | M | | |
| 36 | Tailgate Seal and Seal Retainer | | O | | | | M | | |
| 37 | Tailgate Hinge Ears (2), Pins (2), and Retaining Hardware | O | | | | | M | | |
| 38 | Tailgate Safety Props | O | | | | | M | | |
| 39 | Safety Equipment Present (i.e. Fire Extinguisher, First Aid Kit, Etc. | O | | | | | M | | |
| 40 | Tailgate Latch Blocks in Place | O | | | | | | | |

This document is for reference and informational purposes only. Pendpac does not guarantee specific levels of product performance per this maintenance schedule. Product performance varies due to multiple factors including but not limited to weather, operating time, maintenance, driver operation, etc...

This document is subject to change with out notice

O= Operator

M= Maintenance



Aley- Gator Maintenance Guide

| Operator Inspection | | | | | | | | | | |
|--|--|-----------|------------|--------|--------|---------|---------|---------|----------|--|
| Item | Description | Pre- Trip | @ Landfill | 10 Hrs | 50 Hrs | 100 Hrs | 250 Hrs | 500 Hrs | 1000 Hrs | |
| <i>Observe Travel is Smooth and Even, Speed is Normal, Controls are Responsive</i> | | | | | | | | | | |
| 41 | Lift Up/ Down | O | | | | | M | | | |
| 42 | Lift Extend/ Retract | O | | | | | M | | | |
| 43 | Grabber Open/ Close | | | | | | | | | |
| 44 | Packer Panel Pack/ Return/ AutoPack/ AutoStop | O | | | | | M | | | |
| 45 | Tailgate Open/ Close | O | | | | | M | | | |
| 46 | Body Up/ Down | O | | | | | M | | | |
| <i>Perform Safety Lockouts to Check Operation</i> | | | | | | | | | | |
| 47 | Ladder Access Proximity Lockout - (With ladder down, no Hydraulic functions should operate.) | O | | | | | M | | | |
| 48 | Arm Test - (With arm extended, Lift should not go into dump position.) | O | | | | | M | | | |
| 49 | Grabber Test - (With Lift Assembly in Dump Position, Grabbers Should not Open.) | O | | | | | M | | | |
| 50 | Arm Lock - (With Pump turned off, Arm Lock should be latched on Mast.) | O | | | | | M | | | |
| 51 | Truck Moving Lockout - (All arm functions, except Slide in and Grabber open are inoperative) | O | | | | | M | | | |
| <i>Check Operation Warning Devices are Operating</i> | | | | | | | | | | |
| 52 | Pump Switch Lamp | | | O | | | | M | | |
| 53 | Packer Panel Warning Lamp | | | O | | | | M | | |
| 54 | Ladder Access Warning Lamp | | | O | | | | M | | |
| 55 | Tailgate Raised Warning Lamp | | | O | | | | M | | |
| <i>Check External Lamps and Miscellaneous are Operating</i> | | | | | | | | | | |
| 56 | Stop, Signal and Tail Lamps | O | | | | | M | | | |
| 57 | Marker Lamps | O | | | | | M | | | |
| 58 | Hopper Lamps | O | | | | | M | | | |
| 59 | Backup Lamps | O | | | | | M | | | |
| 60 | Backup Flood Lamps | O | | | | | M | | | |
| 61 | Strobe Lamp | O | | | | | M | | | |
| 62 | Camera Lamps | O | | | | | M | | | |
| 63 | Alternating Flashers | O | | | | | M | | | |
| 64 | Backup Alarm | O | | | | | M | | | |
| <i>Check Miscellaneous Control Box Devices are Functioning</i> | | | | | | | | | | |
| 65 | Joystick On/ Off | O | | | | | M | | | |
| 66 | Packer Panel On/ Off | O | | | | | M | | | |

This document is for reference and informational purposes only. Pendpac does not guarantee specific levels of product performance per this maintenance schedule. Product performance varies due to multiple factors including but not limited to weather, operating time, maintenance, driver operation, etc...

This document is subject to change with out notice

O= Operator

M= Maintenance



Alley- Gator Maintenance Guide

| Hydraulic System | | | | | | | | | |
|---------------------------------|---|-----------|------------|--------|--------|---------|---------|---------|----------|
| Item | Description | Pre- Trip | @ Landfill | 10 Hrs | 50 Hrs | 100 Hrs | 250 Hrs | 500 Hrs | 1000 Hrs |
| Hydraulic Oil Tank | | | | | | | | | |
| 67 | Check for Leaks, Damage, Etc on Tank | O | | | | | | M | |
| 68 | Check Tank is Securely Mounted to Slide Tube Sub-Frame | O | | | | | | M | |
| 69 | Check Oil Level in Tank (All Cylinders Retracted) | O | | | | | | M | |
| 70 | Check Oil Condition | O | | | | | | M | |
| 71 | Replace Oil (More Often if Required) | | | | | | | | M |
| 72 | Check Suction Ball Valve is Fully Open | O | | | | | M | | |
| 73 | Clean the Breather Cap (Replace if Necessary) | | | | | | | M | |
| 74 | Clean Suction Strainer (Replace if Necessary) | | | | | | | | M |
| 75 | Change Hydraulic Return Line Oil Filter | | | | M* | | | | M |
| 76 | In- Line Pressure Filters (2) | | | | M* | | | | M |
| 77 | Clean Magnetic Plug (More often after failures) | | | | | | | | M |
| Pump | | | | | | | | | |
| 78 | Inspect Pump For Leaks | O | | | | | M | | |
| 79 | Ensure Pump is Securely Mounted | O | | | | | M | | |
| 80 | Ensure Driveline is Securely Mounted | O | | | | | M | | |
| Hydraulic Valve Banks | | | | | | | | | |
| 81 | Inspect Valve Banks For Leaks | O | | | | | M | | |
| 82 | Ensure valve Banks are Securely Mounted | O | | | | | M | | |
| 83 | Check System Pressure Relief Valve(s) settings. Adjust if Required. | | | | | | | M | |
| Chassis Pneumatic System | | | | | | | | | |
| 84 | Drain air tanks (at the end of each day) | | | O | | | | | |
| 85 | Inspect Air Lines For Leaks | | | O | | | | M | |
| Miscellaneous | | | | | | | | | |
| 86 | Inspect All Hydraulic Lines For Leaks, Chafing | O | | | | M | | | |
| 87 | Inspect all Hydraulic Cylinders and Msc. hydraulic Components for Leaks | O | | | | M | | | |
| 88 | Check Pack Circuit Pressure Switch Setting. | O | | | | M | | | |

* Required on new equipment only

To Protect The Hydraulic Components Of Your New Equipment, The Return Line Filter And In- Line Pressure Filter MUST BE CHANGED AFTER THE FIRST 250 HOURS OF USE. Thereupon, The Filters Should Be Changed Once Every 1,000 Hours Or Following A Major Hydraulic Component Failure!

This document is for reference and informational purposes only. Pendpac does not guarantee specific levels of product performance per this maintenance schedule. Product performance varies due to multiple factors including but not limited to weather, operating time, maintenance, driver operation, etc...

This document is subject to change with out notice

O= Operator

M= Maintenance

