



LEACH

ALPHA-III™

 **labrie**
Labrie **Enviroquip** Group

CNG

**CNG READY
SINCE 2001**

LONGEST LASTING LINE OF REAR LOADER PRODUCTS – EVER.

As we all know, Leach™ has been the number one manufacturer of rugged rear loaders since 1932. With more than 50,000 rear loaders on the road today, Leach™ has more products than any other brand in the marketplace. No other rear loader can match the reliability and functionality that Leach™ brings to the table.

Today, we continue to reinforce that position with best-in-class models offering the same legendary design and construction that the industry has come to expect from the Leach™ brand. Both Leach™ models offer a performance profile precisely suited to your collection needs. To survive in today's highly competitive market, trucks must be tough, reliable, and user-friendly. Leach™ rear loaders are designed to improve every aspect of your operation.

Leach™ knows you demand the most dependable rear loader there is, and our trucks are engineered and manufactured to perform better, faster, and longer than anything else out there. When you buy a Leach™ rear loader, you get a stronger body to collect and transport, the biggest hopper available in the market, "smart hydraulics" for better, faster packing cycles and a smarter, more efficient open-and-eject process. **We make sure you get it all.**

"The Alpha-III™ is in essence, a scaled down version of the famous 2R-III™, which is the most rugged and well known refuse body in the business. With its structurally strong trough floor, its large hopper, fast cycle time, and big payload, the Alpha-III™ is the perfect choice for those who prefer a single axle Leach™ product. The best thing about the Alpha-III™ is that it is part of the Leach™ family. There is value in the fact that you can bank on its reliability and performance for many years to come. That's the trademark of the Leach™ brand; you can count on it!"

Mike Dahlmann
*Best Equipment Company
Indianapolis, Indiana*

"We bought 5 Leach Alpha-III™ because we believe that with the Hardox wear plates in the hopper, we will extend the life of our truck significantly. We also like the Alpha-III™ speed, great weight distribution and light body that maximize payload. What sets the Alpha-III™ apart from the competition is the quality of the truck and the excellent customer and warranty service at Labriepius."

Yvon Pellerin
*Maintenance Manager,
Gaudreau Environnement
Canada*

THE LEACH™ HISTORY

The Leach™ story really began in 1931, when Elgin Sales Corp. summoned Elmer Leach's two sons to New York to look over the Colecto (a self-loading refuse body with side or rear buckets and enclosed bodies) to see if they could devise a better model.

Though it may not have been obvious at the time, this turned out to be a pivotal event for the future of Leach™, and the refuse body industry as a whole. Within a mere ninety days, the first Leach™ refuse truck would emerge from the Leach™ factory on South Main Street and the Leach™ legend was born.

This story of two forward-thinking hard workers is what brought Leach™ to the forefront of an industry still in its infancy. With a reputation for innovative, hard-at-work refuse trucks, Leach™ became and still is today, the standard by which all others are measured.



1932 Leach™ model 6R Refuse Getter



1960 Leach™ 2R

3.0
CUBIC YARD
HOPPER

5"
BELOW
CHASSIS FRAME
LOAD SILL

19*
SECOND
PACKING
CYCLE

THE STRONG. THE PROUD.

Meet the truck that more operators demand over any other rear loader in the industry. With its standard 3.0 yd³ hopper, load sill 5" below chassis frame, and a packing cycle time of up to 19 seconds, it's no wonder the Leach Alpha-III™ is labelled as the strongest mid-range rear loader in the industry.

The Leach Alpha-III™ allows you to collect more refuse per cubic yard than any other truck. Its diamond-shape ejection panel combined with its curved body technology guarantee loads are evenly distributed and that available volume is fully

maximized. By avoiding refuse pre-compaction in the hopper, we ensure your truck will not require expensive floor repairs.

Proven time and time again, anything you throw in this truck, from everyday refuse to big bulky items, the Alpha-III™ will crush it and put it in its place. Suitable for residential and commercial collection, the Leach Alpha-III™ offers power and versatility at the same time.



Residential collection



Residential collection with cart tippers



Light commercial collection

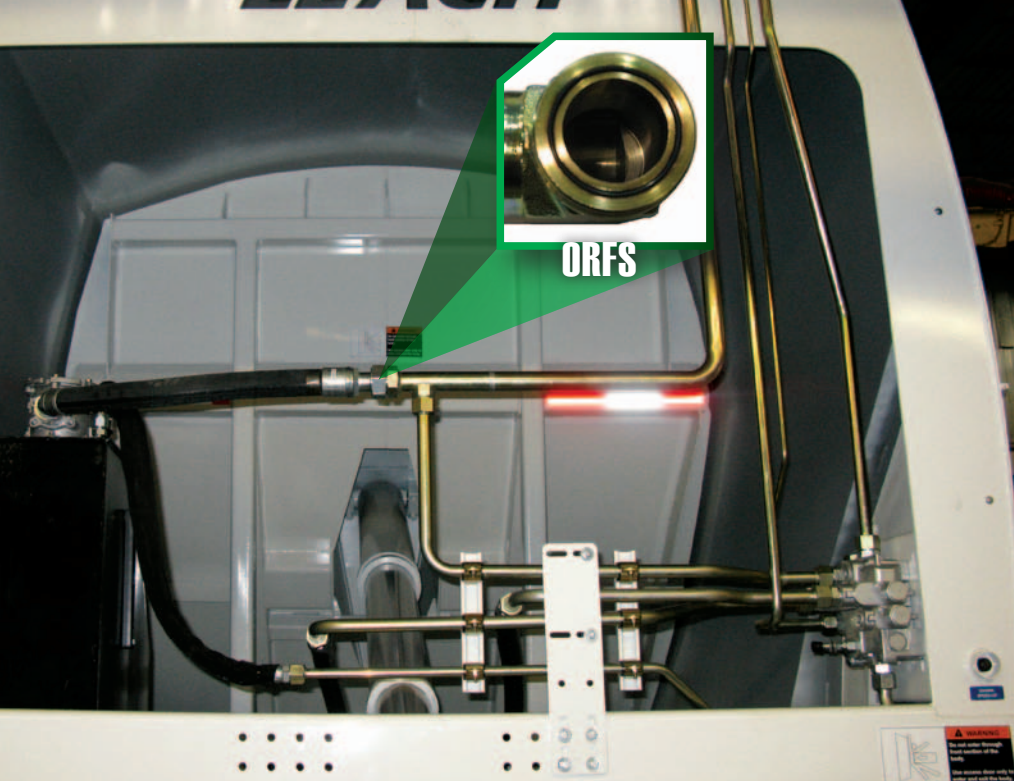


Commercial collection with push bar



WILL NEVER LET YOU DOWN

Day after day, Leach™ rearloaders won't let you down; built strong and ready to tackle any residential or commercial routes you have for them. At Labrie, quality and productivity come standard with every truck we deliver. Every option we offer, every design we fine-tune and every feature we add to our trucks have the same goal; maximizing your fleet efficiency while keeping your maintenance costs at their lowest. **We build every Leach™ rearloader in order to deliver the best truck in the market with the lowest total cost of ownership.**



OPTIMIZED TOTAL COST OF OWNERSHIP

The Leach Alpha-III™ is a maintenance friendly truck with optimized TCO features that will allow you to keep your truck running longer and more efficiently while reducing maintenance costs. Leach™ uses ORFS ("O" Ring Face Seal) fittings and zinc plated hydraulic hard lines as it's standard to increase reliability and to prevent leaks and conduit failure.

MAXIMUM CAPACITY EQUALS SUPER PRODUCTIVITY

The largest hopper sweep in the industry combined with 5.5" and 4.5" hydraulic cylinders allow you to fill the hopper with more waste, cycle the packer less and still compact the biggest load. The result: longer lasting hydraulic components and significantly increased productivity.



RESIDENTIAL COLLECTION

When your route requires collection to be performed manually, with residential carts, with larger shared containers, or perhaps all of the above, the Leach Alpha-III™ has you covered. Without sacrificing body capacity, its speed and hopper capacity create an optimal system requiring less packing cycles to get the route done as quickly as possible. The combination of efficiency and versatility on the Leach Alpha-III™ translates into lower operational costs and higher profits for the hauler.



SMART CONTROL LOCATION

Most rear loaders on the market today have the ejector and tailgate controls installed on the chassis or under the body; exposed to mud, snow, and salt from the tires. Leach™ has a smarter and safer location for these controls; on an Alpha-III™, tailgate and ejector controls are safely located above the floor and inside the body, well protected from dirt and debris.



LOWEST LOADING SILL HEIGHT

The Leach Alpha-III™ ergonomic load sill design makes it easy to lift and load the hopper, providing a higher level of productivity. The tailgate loading sill is **5 inches below the chassis frame** to facilitate the operators' job and help prevent injuries.

The Alpha-III™ cycle time, low sill height and 3.0 yd³ large hopper combined with the ability to continue loading while cycling without spilling any refuse on route represent **potential savings of up to 20 minutes per day based on a regular 8 hour shift**. Increased productivity will allow operators to extend their route and maximize revenues.



ENHANCED ENGINEERING TO MAXIMIZE PERFORMANCE

The packer/carrier rides on rollers, reducing friction and wear and allowing longer continuous use for more cost-effective maintenance. Engineered packer/carrier geometry creates the ideal packing cycle by eliminating any pre-compaction of refuse against the hopper floor – **a preventive maintenance feature exclusive to the Leach™ tailgates**.

SLIDING BLOCKS ALSO AVAILABLE

Our sliding blocks have chromium faces and run on chromium wear strips.



COMMERCIAL COLLECTION

A Leach Alpha-III™ will get you through a light commercial route in less time than you can imagine. With its large 3.0 yd³ hopper and the most productive hopper/packing combination in the industry, **Leach™ is the only truck that allows your operators to continue filling while still in packing cycle.** This unique feature will boost your fleet productivity, allowing you to take on extra routes and ultimately increase revenue. The famous Leach™ trough works to keep liquids collected from restaurants and grocery stores separated from the refuse, keeping the center of gravity low and ensuring optimized weight distribution.



HOPPER/SWEPT AREA DESIGN

Some packer panels may not match the hopper contour, or they may actually pre-compact trash against the hopper floor. Leach™ eliminates premature floor wear by producing a smooth, symmetrical sweep of the entire tailgate with every operation. Decreased friction to the hopper floor reduces wear and saves you money from expensive floor repairs. **Also, the ability to continue loading the hopper during the packing cycle without pushing refuse out of the hopper, eliminates waiting time and keeps your fleet on the move while others are still loading.**

HARDOX 450 HOPPER CONSTRUCTION AVAILABLE AS AN OPTION

The Leach Alpha-III™ hopper can be built out of HARDOX 450 steel. **HARDOX** – a high-wear material up to 5 times more abrasion resistant than typical AR steel – is used to increase the hopper life. With the HARDOX package, the Leach™ tailgate upper and lower side walls are both made of a single piece of HARDOX 3/16" thick rated at 175,000 psi to increase strength and durability. Also built with HARDOX 3/16" thick steel and rated at 175,000 psi, the hopper floor life will exceed your expectations.

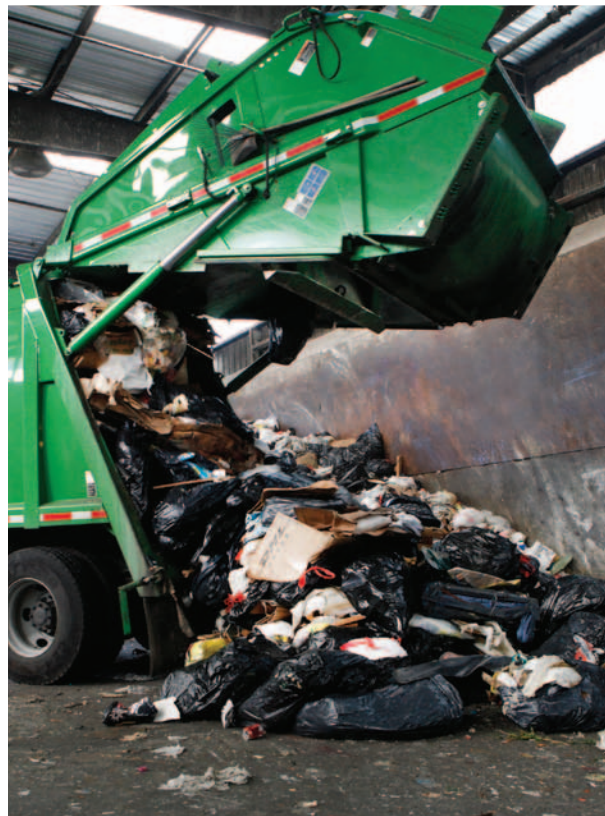
HARDOX
WEAR PLATE

INCREASED COMPACTION FOR MAXIMIZED PAYLOAD

Diamond Force Compaction design on the push out panel evenly distributes trash during packing and minimizes voids in the payload. Compaction rating will reach 900 lbs + per cubic yard.

UNIQUE TROUGH FLOOR DESIGN

The Leach Alpha-III™ single piece floor trough design has stood the test of time, and **it is the thickest standard floor in the industry.** This unique trough forms a natural sump, which can hold up to 300 gallons of liquid.





LABRIE CNG: DELIVERING A CLEANER WAY OF DOING BUSINESS SINCE 2001



*Leach Alpha-III™ /
chassis mounted
configuration*

With the high volatility of diesel prices, fuel choice has never been more important. At Labrie, we believe in greener, safer, smarter and more efficient waste collection vehicles. This is what we have been designing and building for the past 25 years.

We deliver the highest-quality, factory-installed compressed natural gas (CNG) solutions that are fully tested at our on-site CNG station. Our manufacturing expertise in CNG is passed along to you with every vehicle.

You benefit from a trusted source of expertise when it comes to converting to CNG.

THE BENEFITS OF CHOOSING CNG ARE HUGE:

- **AFFORDABLE** : Substantially reduced fuel costs when compared to diesel
- **CLEAN**: 23% less Greenhouse Gas Emissions compared to diesel fuel
- **FOREIGN FUEL INDEPENDENCE**:
98% of fuel supplied from the U.S. and Canada
- **QUIET**: 10 decibels more quiet than a diesel truck

LEACH™ CNG: STRONG AND DURABLE YET GREENER

- Behind the cab, roof or chassis mounted CNG design
- 50 to 82 Diesel Gallon Equivalent
- Innovative chassis mounting delivering optimal weight distribution without stretching the wheelbase



**CNG READY
SINCE 2001**

PREMIUM PRODUCTS COME WITH PREMIUM SUPPORT.

Labrie is committed to delivering the ultimate ownership experience throughout North America. Our pursuit of excellence continues long after a Leach™, Labrie™ or Wittke™ is put into service.

OUR NORTH AMERICAN NETWORK IS QUALITY DRIVEN:

- **Labrieplus 24/7 customer support system**, provides quality replacement parts, premium hands-on field and live assistance. Peace of mind guaranteed.
- **A network of over 45 premium distributors** located throughout the United States and Canada are highly trained to assist you; providing live assistance from a dedicated staff of professional representatives to support all of our Leach™, Labrie™ and Wittke™ products.


Labrie Enviroquip Group
Ontario, California


Labrie Enviroquip Group
San Luis, Sonora, Mexico


Oshlosh, Wisconsin


Lafayette, Georgia


Labrie Enviroquip Group
Quebec City, Canada

- **Over 60 Premium Distributor Locations**
- **7 Regional Sales Managers**
- **7 Field Service Representatives**
- **2 Technical Advisors / Demo Operators**
- **1 National Account Manager**

Visit www.labriegrup.com
to view a complete listing of our premium distributor network

		Alpha-III™					
BODY DIMENSIONS		14 yd³ (11m³)	16 yd³ (12m³)	18 yd³ (14m³)	20 yd³ (15m³)	25 yd³ (19m³)	29 yd³ (22m³)
A	Body Overall Length	192" (4,876 mm)	205" (5,200 mm)	217" (5,522 mm)	230" (5,845 mm)	269" (6,823 mm)	302" (7,661 mm)
CA	Cab to Axle	Refer to Labrie chassis requirements					
AF	After Frame	Refer to Labrie chassis requirements					
GWR	Minimum Requirements	Refer to Labrie chassis requirements					
D	Height Above Chassis Frame (Body Roof)	91" (2,321 mm)					
E	Height Above Chassis Frame (Body Rear Frame)	93" (2,369 mm)					
F	Height Above Chassis Frame (Tailgate Raised)	160" (4,061 mm)					
I	Body - Outside Width	96" (2,440 mm)					
J	Body - Inside Width	90" (2,294 mm)					
K	Hopper Depth	16" (418 mm)					
L	Tailgate - Outside Width	96.4" (2,447 mm)					
N	Start of Clear CA to Body Front	Refer to Labrie chassis requirements					
P	Top of Step Below Chassis Frame	26" (655 mm)					
Q	Hopper Bottom Below Chassis Frame	21" (544 mm)					
R	Hopper Opening Width	84" (2,133 mm)					
S	Hopper Opening Height	62" (1,581 mm)					
U	Rear of Body to Rear of Tailgate, Closed	58" (1,470 mm)					
*	Loading Sill Below Chassis Frame	5" (127 mm)					
*	Hopper Capacity	3,0 yd ³ (2,3 m ³)					
FEATURES	<ul style="list-style-type: none"> - Adjustable steps and stationary grab handles on both sides of the tailgate - Optimum tailgate seal height reduces potential seepage - Buzzer system enables loaders to signal any event to the driver (located on both sides of tailgate) - Dual-lever packing controls on curbside of the tailgate - Tailgate & Ejector controls located inside the body front on street side - Industrial quality polyurethane paint - Body white color as a standard, other colors available - Meets all ANSI Z-245.1 Safety Standards 						
HYDRAULIC PUMP	Gear type with pressure compensated wear plates Capacity 38 GPM @ 1,200 RPM						
CYLINDERS	Tailgate Lift	4" (10 cm)	Single Acting	BODY SIZE	STAGES	SIZE	
	Packer panel	4.5" (11 cm)	Double Acting	14 yd ³	1	4-1/2"	
	Carrier panel	5.5" (14 cm)	Double Acting	16 yd ³	2	5-1/2" x 4-1/2"	
				18 yd ³	2	5-1/2" x 4-1/2"	
				20 yd ³	2	5-1/2" x 4-1/2"	
				25 yd ³	3	6-1/2" x 5-1/2" x 4-1/2"	
				29 yd ³	4	6-1/2" x 5-1/2" x 4-1/2" x 3-1/2"	
HYDRAULIC TANK	Capacity	50 gallons (189 Liters)		Filters	125 micron in-line suction strainer with by-pass valve		
	Location	Right-hand front, on the floor inside the body			10 micron return line filter with by-pass valve		
				Sight Gauge	Located on tank at eye level		
HYDRAULIC SYSTEM	Maximum Operating Pressure	2,150 psi					
BODY SPECIFICATIONS	Standard Configurations						
Body Walls						10 GA	80,000 psi
Body Roof						10 GA	80,000 psi
Flanged Floor Plates						1/4" (6.4 mm)	50,000 psi
Floor Through						5/16" (7.9 mm)	50,000 psi
Ejection Face Plate						3/16" (4.8 mm)	50,000 psi
Body Ramp Liners (STD on Light Commercial)						1/4" (6.4 mm)	80,000 psi (Hardox 450, 175,000 psi optional)
RESIDENTIAL TAILGATE SPECIFICATIONS	Standard Configurations						
Tailgate Upper Side Walls						3/16" (4.8 mm)	50,000 psi (Hardox 450, 175,000 psi optional)
Tailgate Lower Side Walls						3/16" (4.8 mm)	50,000 psi (Hardox 450, 175,000 psi optional)
Hopper Floor Plate						3/16" (4.8 mm)	100,000 psi (Hardox 450, 175,000 psi optional)
Carrier Face Plate						3/16" (4.8 mm)	50,000 psi
Packer Face Plate						3/16" (4.8 mm)	50,000 psi
LIGHT COMMERCIAL TAILGATE SPECIFICATIONS	Standard Configurations						
Tailgate Upper Side Walls						3/16" (4.8 mm)	50,000 psi (Hardox 450, 175,000 psi optional)
Tailgate Lower Side Walls						1/4" (6.4 mm)	50,000 psi (Hardox 450, 175,000 psi optional)
Hopper Floor Plate						1/4" (6.4 mm)	100,000 psi (Hardox 450, 175,000 psi optional)
Carrier Face Plate						3/16" (4.8 mm)	50,000 psi
Packer Face Plate						3/16" (4.8 mm)	50,000 psi

1- CA must be usable with no obstructions protruding above frame. / 2- Verify suspension type with factory. / 3- Truck selected must be capable of carrying net weight of body plus weight of refuse to be collected.



LABRIE ENVIROQUIP GROUP

Labrie Enviroquip Group is one of the largest manufacturer's of refuse and recycling collection vehicles in North America. Our product lines of Labrie, Leach, and Wittke are renowned to be the most reliable, efficient, productive, and innovative in the solid waste industry today.

Throughout our history, we have been recognized for the design and production of the highest quality vehicles available on the market, while our customers benefit from a single trusted source of engineering expertise.

At Labrie we continually push the boundaries of innovation to provide a greener, safer, smarter and more efficient way of waste management and collection.

We are committed to building and delivering the finest refuse collection equipment in the industry to suit all of your collection needs. With the strongest dealer network in the industry (over 45 distribution points across the continent), our stock and demo program, engineering expertise, and the Labrieplus 24/7 customer support center,

Labrie delivers the ultimate ownership experience. Labrieplus is Labrie's full service customer support center located in the U.S. Its mission is to provide quality replacement parts and premium hands-on field support to Labrie equipment owners. Labrieplus is the single source for Labrie, Leach, Wittke and Pendpac OEM and selected all makes of parts.

DRIVE EXCELLENCE

Labrie is certified ISO 9001-2008 and attests to the quality of these products. Labrie has made every reasonable effort to ensure that the information contained in this brochure is accurate. However, we accept no responsibility for any errors or omissions, and we reserve the right to modify designs, characteristics and products at any time. Contact Labrie for prices and options or to obtain the phone number of your local Labrie distributor. For the most recent version of our spec sheets, please go to Labrie website at www.labriegrup.com. In case of discrepancy, the Web version takes precedence over any printed literature.
© Labrie Enviroquip Group 2014. - Printed in USA



Labrie Enviroquip Group

Labrie (Head Office)

175-B, route Marie-Victorin, Levis, Quebec, Canada G7A 2T3

Toll free: 800 463-6638

info@labriegrup.com

Phone: 418 831-8250

www.labriegrup.com

Fax: 418 831-5255



Labrieplus (USA Office)

1981 W. Snell Road, P.O. Box 2785, Oshkosh, Wisconsin, USA 54903-2785

Toll free: 800 231-2771

Phone: 920 233-2770

Fax: 920 232-2496