

## EASE OF OPERATION



We design every product with more ease of operation in mind by integrating important extras including ...

- ***Amnibus* Control System**
- Hydrostatic drive
- Single station controls
- Wireless remote
- Telescoping boom up to 10', 270° rotation
- Articulating hose reel

## SAFETY



We power up performance without compromising safety by ensuring that the industry's best safety features are all included as standard equipment.

- Hydraulic rear door locks
- Automatic vacuum breaker
- Reflective striping
- Hydraulic safety interlock
- Emergency shut down

## PERFORMANCE



We pack a punch that delivers more power to you by keeping performance prominent with power-conscious features like our ...

- 3-stage centrifugal compressor
- 27" Corten® steel fans in compressor
- Articulating hose reel
- 2-engine design allows totally independent control of vacuum and water system
- Hydrostatic Blower drive

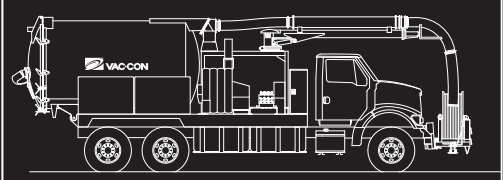
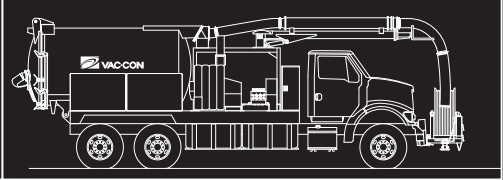
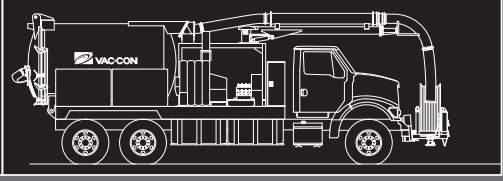
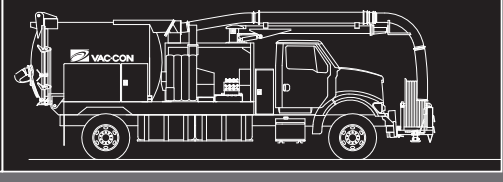
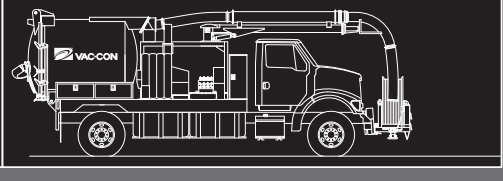
## DURABILITY



We ensure Vac-Con machines resist the worst wear and tear by using only the highest quality materials.

- Corten® steel body and compressor parts
- Centrifugal separator with cleanout
- Deflector shield in debris body
- Cross-linked polyethylene water tanks
- Welded fan components

## VAC-CON MODELS AND SPECS:

			16 YARD	12 YARD	11 YARD	9 YARD	5 YARD	3.5 YARD
16 YARD		SAFETY	Automatic Vacuum Breaker	•	•	•	•	•
			Vacuum Breaker/Relief in Pendant Control Station	•	•	•	•	•
			Emergency Shut Down	•	•	•	•	•
			Hydraulic Safety Interlock	•	•	•	•	•
			Circuit Breakers	•	•	•	•	•
			Available Fan Silencer	•	•	•	•	•
			Hydraulic Rear Door Locks	•	•	•	•	•
			Boom Travel Tie Down	•	•	•	•	•
			Protected Hose Reel Drive Components	•	•	•	•	•
			Footage Counter	•	•	•	•	•
12 YARD		DURABILITY	Low Water Alarm/Light	•	•	•	•	•
			Strobe Lights	•	•	•	•	•
			ICC Lighting	•	•	•	•	•
			Reflective Striping	•	•	•	•	•
			Corten® Steel Debris Body	•	•	•	•	•
			Deflector Shield in Debris Body	•	•	•	•	•
			Welded Fan Components	•	•	•	•	•
			Centrifugal Separator with Cleanout	•	•	•	•	•
			Water Pump Drain	•	•	•	•	•
			Winter Recirculation	•	•	•	•	•
11 YARD		PERFORMANCE	Centrifugal Compressor Flush Out	•	•	•	•	•
			12 Month Warranty	•	•	•	•	•
			Polyethylene Water Tanks from 500 to 1500 gallons	•	•	•	•	•
			Polyurethane Paint	•	•	•	•	•
			Available Hi Dump	•	•	•	•	•
			Hydraulic Scissor Lift	•	•	•	•	•
			Body Pump Off	•	•	•	•	•
			Street Flusher	•	•	•	•	•
			Full Opening Rear Door	•	•	•	•	•
			Water Pump with Smooth Continuous Pressure	•	•	•	•	•
9 YARD		EASE OF OPERATION	Front Tow Hooks	•	•	•	•	•
			2-Stage Compressor	•	•	•	•	•
			Available 3-Stage Centrifugal Compressor	•	•	•	•	•
			27" Corten® Steel Fans in Compressor	•	•	•	•	•
			2 Engine Design: Vacuum System powered by Chassis Engine and Water System by Auxiliary Engine	•	•	•	•	•
			Portable Video Inspection	•	•	•	•	•
			Boom Lights	•	•	•	•	•
			Grate Lifting Hook on Boom	•	•	•	•	•
			Front Mounted Hydraulic Hose Reels from 500' to 800' Capacity	•	•	•	•	•
			Articulating Hose Reel	•	•	•	•	•
5 YARD			Hand Gun Reel	•	•	•	•	•
			Manual Level Wind Guide	•	•	•	•	•
			Available Positive Displacement Blower	•	•	•	•	•
			6" Vac Intake Hose	•	•	•	•	•
			8" Vac Intake Hose	•	•	•	•	•
			4 Way Boom With 270° Rotation	•	•	•	•	•
			Water Systems up to 3000 PSI and 120 GPM	•	•	•	•	•
			Water Systems up to 4000 PSI and 30 GPM	•	•	•	•	•
			Hydrostatic Blower Drive	•	•	•	•	•
			Available Automatic Level Wind Guide	•	•	•	•	•
3.5 YARD			Telescoping Boom, Extendable Boom	•	•	•	•	•
			Joystick for Boom	•	•	•	•	•
			Available Wireless Remote	•	•	•	•	•
			Coated Body/Body Wash Out	•	•	•	•	•
			Hand Gun Wash Down System	•	•	•	•	•
			Tachometer for Chassis Engine at Operator Station	•	•	•	•	•
			Gravity Drain Systems	•	•	•	•	•
			5" Butterfly Valve	•	•	•	•	•
			Rear Door Pipe Rack	•	•	•	•	•
			Rotary Pipe Rack	•	•	•	•	•
			Tool Boxes / Tool Storage	•	•	•	•	•



How does your machine stack up?  
To request a demonstration call  
904-284-4200 or visit [www.vac-con.com](http://www.vac-con.com)

969 Hall Park Road  
Green Cove Springs, FL 32043 U.S.A.  
Tel: 904-284-4200 • Fax: 904-284-3305  
[www.vac-con.com](http://www.vac-con.com) • [vns@vac-con.com](mailto:vns@vac-con.com)

You Tube /Vac-ConTrucks facebook Keyword: Vac-Con

follow us on twitter /VacConInc VACUUM TRUCK experts



3.5 YARD • 5 YARD • 9 YARD • 11 YARD • 12 YARD • 16 YARD  
COMBINATION MACHINE SERIES



## VAC-CON EMPOWERS YOU TO DO MORE

Vac-Con delivers more power and value than the competition

Only a Vac-Con comes fully loaded with a powerful package of thoughtful features.

For more power, flawless ease of use, relentless performance, rugged durability and uncompromised safety...Vac-Con delivers.

More Uptime – Vac-Con machines are so durable they stay on the job longer

More Proof – Vac-Con's technology always delivers better equipment and solutions

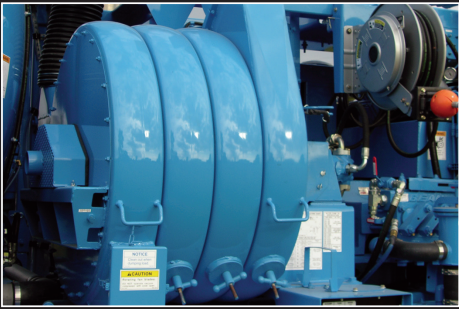
More Success – Vac-Con machines allow you to load faster, last longer, and do the job better

More Confidence – With Vac-Con you just know that you can always do more





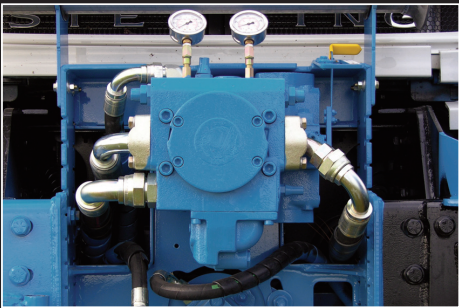
VAC-CON'S FEATURES ARE BETTER BY DESIGN



COMPRESSOR SYSTEM PERFORMS ON THE JOB AND UNDER WATER

Vac-Con's unique 3-stage compressor simply loads faster than any other fan on the market. Increasing both vertical and horizontal pull, this powerful system develops 200" (H<sub>2</sub>O) of vacuum

to perform the toughest jobs, like vacuuming underwater without special attachments. It is backed by a five-year warranty.



HYDROSTATIC DRIVE MAKES THE OPERATOR'S LIFE EASIER

Using the Vac-Con chassis engine with hydrostatic drive for the vacuum is a more efficient system because it's less complicated and eliminates the need for cumbersome PTO, clutch, and gearbox operation.

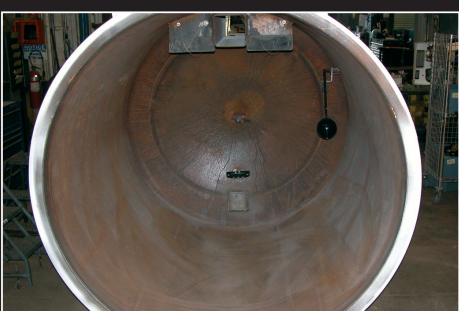
It will allow the operator to focus on getting the job done. We don't believe that you should have to work hard to make the machine work hard! Optional high capacity hydrostatic pump for quieter more efficient operation.



DUAL ENGINE DESIGN RAISES THE POWER

Vac-Con's unique 2-engine design uses the chassis engine to drive the vacuum where you really need the power. The auxiliary engine drives the water system which delivers continuous, complete water recirculation whether

you're in motion or resting. This 2-engine design allows the convenience of truly independent vacuum and water system operation.



CORTEN' STEEL DEBRIS TANK IS MORE DURABLE AND RESISTS RUST AND CORROSION

All Vac-Con debris tanks are made of Corten' steel, a high strength, low-alloy steel, developed and proven in vacuum loader applications to resist corrosion and abrasion. The debris tank door is securely fastened by

hydraulic door locks and is controlled from the side of the truck for optimum safety and... it's backed by a five-year warranty.



VAC-CON WATER TANKS ARE THERE FOR THE LONG HAUL

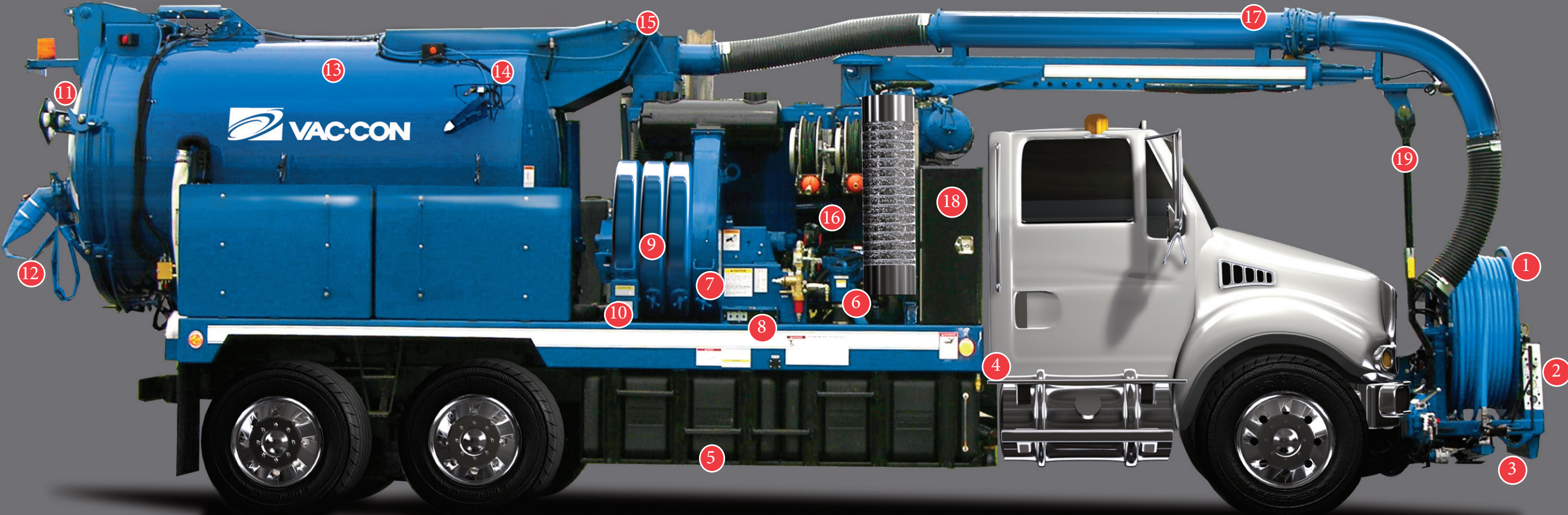
Constructed of durable cross-linked polyethylene, these tanks resist damage from impact, are not affected by the elements or corrosion, and are easily maintained.

We are so confident, we offer a standard ten-year warranty.

COMBINATION MACHINE SERIES

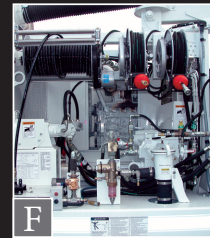
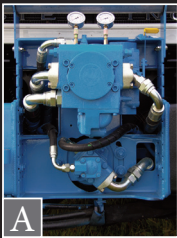
OUR "STANDARD" PACKAGE COMES FULLY LOADED

- |   |   |    |  |    |   |
|---|---|----|--|----|---|
| 1 | Hydraulically Operated, Front-Mounted Hose Reel | 7  | Lubrication Chart                                      | 15 | Exclusive Automatic Vacuum Breaker Shut Off System      |
| 2 | Operating Controls In Front                     | 8  | Debris Body Dump Control On Side Of Truck              | 16 | Auxiliary Engine For Independent Water System Operation |
| 3 | Hose Rewind Guide                               | 9  | Centrifugal Compressor, With Welded Corten' Steel Fans | 17 | Hydraulic Boom Rotates Up To 270°                       |
| 4 | Connection For High-Pressure Handgun            | 10 | Centrifugal Separator & Clean-Out                      | 18 | Weather-Tight Tool Boxes With Locks                     |
| 5 | Polyethylene Water Tanks, Low Center Of Gravity | 11 | Hinged Door, Fully Opening With Hydraulic Door Locks   | 19 | Transport Cradle For Boom                               |
| 6 | High Capacity Water Pump                        | 12 | Butterfly Drain Valve & Hose                           |    |   |
|   |   | 13 | Corten' Steel Debris Tank                              |    |   |
|   |   | 14 | External Load Indicator                                |    |   |



OPTIONS

- |   |                                |   |                               |
|---|--------------------------------|---|-------------------------------|
| A | Hydrostatic Drive              | F | Hydro-Excavation Package      |
| B | Articulating Hose Reel         | G | Wireless Remote               |
| C | 3-Stage Centrifugal Compressor | H | Variable Flow Water System    |
| D | 6' or 10' Telescoping Boom     | I | Hydraulic Pump-Off Systems    |
| E | Hi-Dump                        | J | Positive Displacement Blowers |
|   |                                | K | Mnibus Control System         |



VAC-CON MAKES LEASING EASY

Our leasing program uses creative financial solutions that maximize your working capital:

**VAC-CON Power Up Leasing**

by **TCE** EQUIPMENT FINANCE, **CCG** Commercial Credit Group, and **leasing 2**

- 100% leasing allows you to add all the options you really need
- Fixed rate financing lets you plan with no surprises
- Simplifies your accounting and tax reporting
- Keeps your credit lines intact

EVERY VAC-CON IS BACKED BY **POWER UP** CUSTOMER SUPPORT

No matter what you need, our mission is to help you on the spot. We go the extra mile to get you back on the job as soon as humanly possible. Vac-Con's part tracking software ensures that we have in inventory all the parts you need when you need them. We have a dedicated service facility for all warranty work, local repairs, and refurbishing work.

**POWER UP** gives you:

- A full time, dedicated service department
- Training center with expert instructors
- 24/7 real person support help line
- Over \$5 million in parts inventory
- 24 hour parts shipment turnaround

THE BEST PART ABOUT VAC-CON IS THE HUMAN FACTOR

While we build the best machines available in the industry, it's our people who really make the difference. That's because our people always take the extra step and always go above and beyond to make sure you have exactly what you need to get the job done. The human factor also extends to our dealer network of:

- US dealers for all 50 states
- Canadian dealers for all provinces
- International dealers in most countries



SEE WHAT MORE YOU CAN DO WITH **INSPECTOR CAM** BY VAC-CON

When you can see the problem you can do so much more with a Vac-Con combo machine. Conveniently mounted and easy to use, Inspector Cam allows you to inspect and deal with broken pipes, protruding laterals, off-grade pipes, leaking joints, recessed taps, root infiltration and much more. Inspector Cam can be enhanced with video recording and on-screen footage and titling features.



**POWER UP**

Our Power Up customer support is dedicated to serving your needs and since we have the highest rated customer support program in the industry, you always get exactly what you need. Whether it's parts, technical service or maintenance training, Vac-Con's Power Up customer support people get it done... right away.