


UTEM SKYTRACKER

UTI/UTN3424, UTI/UTN3827



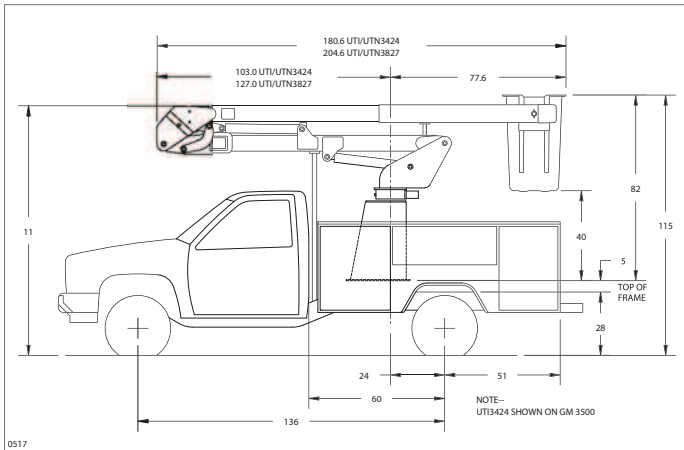
-  Exclusive 540 degree boom rotation with hourglass worm gear drive
Provides smooth and self locking rotation with a mechanical stop
-  Upper and lower booms are high strength, low alloy steel
Provides low weight and maximum strength

Strength, innovation and service from UTEM



Utility Truck Equipment MFG, L.L.C.
PO Box 9
Hewitt, TX 76643
Phone: 254-857-8204 Fax: 254-857-9253
WWW.UTEMBUCKETS.COM

UTEM SKYTRACKER MODELS



Dimensional Specifications

	UTI/N3424	UTI/N3827
Horizontal side reach - Overcenter	23 ft (7.01m)	27 ft (8.23m) ²
Height to bottom of basket ¹	29 ft 8 in (9.04m)	33 ft 8 in (10.25m) ²
Working height ¹	34 ft 8 in (10.56m)	38 ft 8 in (11.78m) ²
Stowed height ¹	10 ft 3 in (3.12m)	10 ft 3 in (3.12m)
Upper boom articulation in degrees	180° Relative to the lower boom	
Lower boom articulation in degrees	-8° to 93°	
Standard basket capacity	300 lbs (136kg)	
Standard insulation gap is 42 in (1.07m) on UTI models		
UTI Tested and rated for Category C 46kV and below per ANSI A92.2-2001		
UTEM aerials meet or exceed ANSI A92.2-2001 and OSHA requirements		
¹ Based on 36 in (0.91m) chassis frame height		
² Add 7 in (.18m) with chassis insulation system		

Minimum Chassis Requirements

	UTI/N3424	UTI/N3827
Vehicle GVWR	10100 lbs	14500 lbs
Front axle GAWR	4000 lbs	5000 lbs
Rear axle GAWR	7500 lbs	11000 lbs
Frame section modulus	5.4 in ³	6.5 in ³
RBM of frame	195k in lbs	234k in lbs
Approximate weight for stability	7100 lbs	10000 lbs

Mechanical Specifications

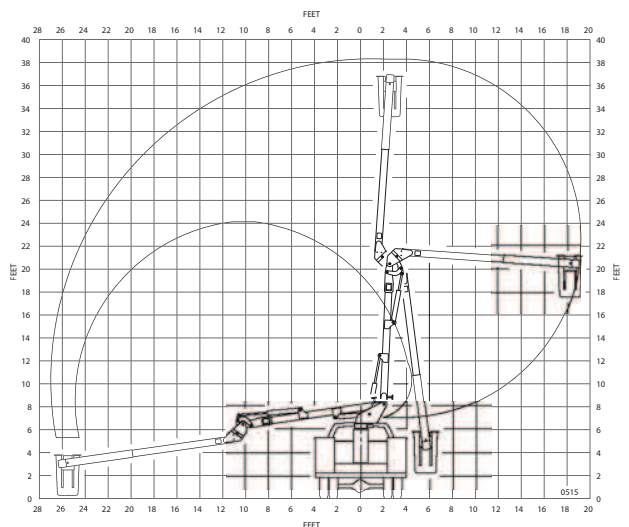
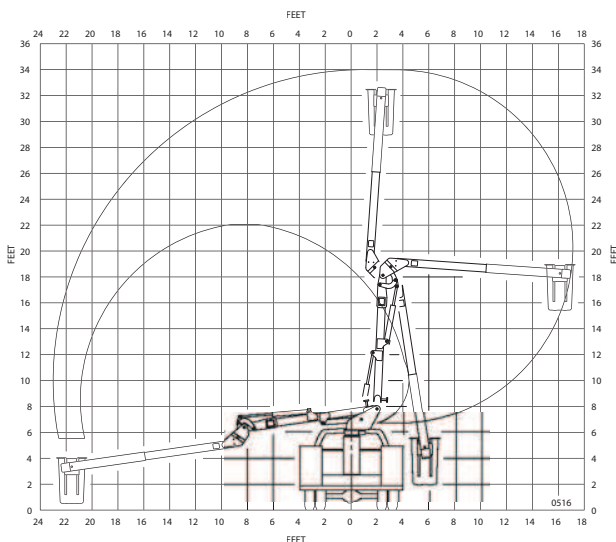
- 540° Boom rotation with mechanical stop
- Rotation drive is hourglass worm gear acting on a shear ball bearing
- Upper control override integral to the lower control valve
- Upper control emergency stop integral to the control valve
- Basket leveling by chain and rod mechanical system
- Boom cylinders have integral load holding valves
- High strength boom pins with greasable pin bosses
- Booms are high strength low alloy steel with 70000 PSI yield
- Pedestal is welded structure with reservoir mounted inside
- Standard color is UTEM white enamel over an epoxy primer
- Body harness with shock absorbing lanyard

Hydraulic Specifications

Operating pressure UTI/N3424	1800 PSI (127kg/cm ²)
Operating pressure UTI/N3827	2200 PSI (155kg/cm ²)
Reservoir capacity w/sight gauge	10 Gal (38l)
Suction strainer mounted in reservoir	100 Mesh
Return line filter with bypass	10 Micron

Optional Equipment

- Baskets with molded step or steps
- Extended fiberglass section for 78 in (2.0m) insulation gap
- Chassis insulation system on UTI3827
- Continuous and unrestricted boom rotation
- Manual basket tilt
- "EHM" electric/hydraulic drive system
- "DPM" dual hydraulic power system
- Emergency lowering - 12VDC powered
- Bridge mount pedestal and remote reservoir
- Hydraulic tool outlet at upper and/or lower controls
- Single stick upper controls
- Outriggers for increased stability
- Torsion bars for increased stability



Utility Truck Equipment MFG, L.L.C.
 PO Box 9, 821 Enterprise
 Hewitt, TX 76643

WWW.UTEMBUCKETS.COM