



# **SUPERIOR**

**FOUNDATION EQUIPMENT**

• DIVISION OF SUPERIOR TRUCK EQUIPMENT •

■ CONSTRUCTION & UTILITY  
DRIVE HEADS

■ TORQUE MONITORING

■ ATTACHMENTS AND TOOLING

■ UTILITY AUGERS

WWW.SUPERIORTRUCK.CA • 866.733.9776





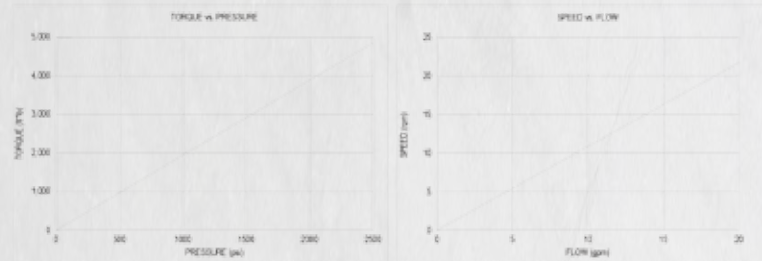
50 Series Portable

## 50 SERIES LIGHTWEIGHT DRIVE HEAD

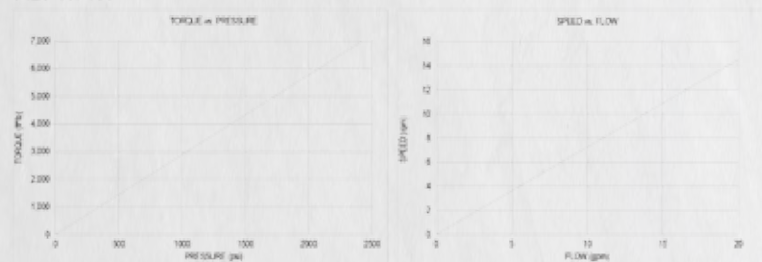
5,000 ft-lb (6,780 N-m) to 7,000 ft-lb (9,491 N-m) Maximum  
Typical Applications: Utility and Construction Industries

### Torque and Speed Charts:

5025-13F134



5425-13F135



- \* Starting torques are approximately 25% less than running torque.
- \* System back pressure will reduce running torque proportionally.
- \* System back pressure should be limited to 100psi (6.9 bar).
- \* Consult Eskridge Representative for Torque and Speed Charts for your specific application.

D50 Single Speed



**ESKRIDGE....**

**STRENGTH**

**RELIABILITY**

**....NO EQUAL!**

**50**  
single speed **5K**

**ESKRIDGE**

## D50 Single Speed



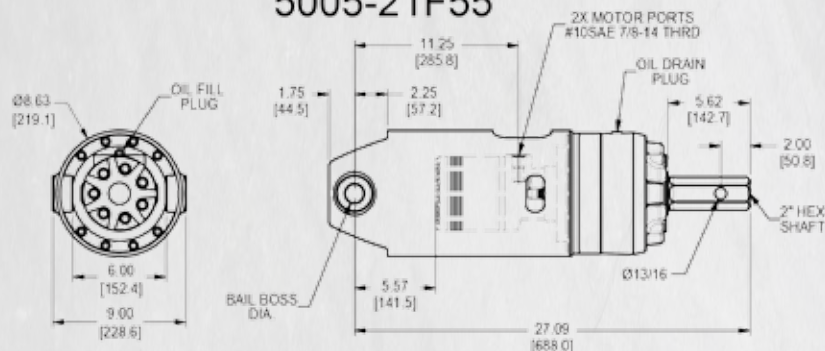
## D50 Series DiggerDrive™

1,500 TO 5,000 FT-LB TORQUE

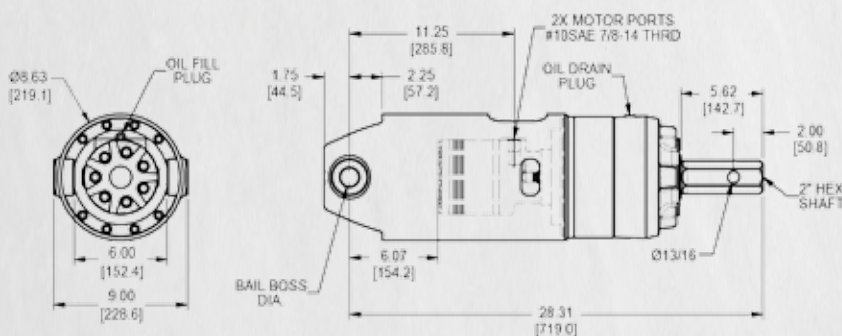
Data Sheet PSD50\_9\_13

The series D50 is heavy-duty, single-speed, planetary drive ideal for the construction digger market. Select from two available torque and speed ranges to fit your application. Eskridge has over 25 years of experience in the manufacture of DiggerDrives™.

## 5005-21F55



5016-21F54



## D50 Single Speed

## Technical Data

HEAVY DUTY, HIGH EFFICIENCY, SINGLE/DOUBLE PLANETARY DRIVE  
SHAFT SIDE LOADING NOT RECOMMENDED.

## TECHNICAL SPECIFICATIONS

MOTOR MOUNT: SAE "A" 2-BOLT  
MOTORS: SINGLE SPEED VANE TYPE  
RATED OUTPUT TORQUES: TO 5,000 ft-lb (6,779 N-m)  
MAXIMUM SYSTEM PRESSURE: 3,000 psi (206.9 bar)  
MOTOR CASE DRAIN: REQUIRED WHEN BACK PRESSURE EXCEEDS 100 PSI  
OUTPUT SHAFT: 2" (50.8mm) HEX  
SHAFT PULL-OUT LOAD RATING: 10,000 lb (2268 kg)  
SHAFT PRESSURE LOAD RATING: 15,000 lb (3402 kg)  
OIL CAPACITY: 2.5 pts (1.2 *l*)  
BAIL BOSS DIAMETER: 1.02" (25.91 mm)  
WEIGHT: 150 lb (113.4 kg) WITH MOTOR

| MODEL | GEAR RATIO | MOTOR | MOTOR PRESSURE<br>Δpsi (Δbar) | FLOW<br>gpm (l/min) | RATED TORQUE*    | SPEED<br>rpm |
|-------|------------|-------|-------------------------------|---------------------|------------------|--------------|
| 5005  | 5:1        | 55    | 2,400<br>(166)                | 25<br>(94.6)        | 2,800<br>(3,796) | 60           |
| 5016  | 16:1       | 54    | 2,400<br>(166)                | 25<br>(94.6)        | 5,000<br>(6,780) | 30           |

\*MAXIMUM INTERMITTENT VALUE

- STARTING TORQUES ARE APPROXIMATELY 25% LESS THAN RUNNING TORQUE.
- SYSTEM BACK PRESSURE WILL REDUCE THE RUNNING TORQUES PROPORTIONALLY.
- BACK PRESSURE SHOULD BE LIMITED TO 100 psi (6.9 bar).
- MAXIMUM FLOW RATE IS DEPENDENT UPON MOTOR DISPLACEMENTS.
- HIGH ALLOY HEAT TREATED BAIL BOSS PINS REQUIRED (CUSTOMER PROVIDED).

| MODEL | SHAFT      | BOSS       |
|-------|------------|------------|
| 5005  | 2 - 2" HEX | 1 - 1" DIA |

| MOTOR SUPPLIER | MOTOR PART NUMBER                  |
|----------------|------------------------------------|
| F - Factory    | 54 - (10.2 CID)<br>55 - (17.7 CID) |

### IMPORTANT INFORMATION...

ESKRIDGE, INC. EXPRESSLY DISCLAIMS ANY IMPLIED WARRANTY OF MERCHANTABILITY OR FITNESS FOR ANY PARTICULAR PURPOSE FOR THE PRODUCTS SHOWN HEREIN.

Any claims based on or related to the products shown herein will be satisfied only by repair or replacement in Eskridge, Inc.'s sole discretion to the extent covered by Eskridge's Product Warranty. Eskridge, Inc. is not liable for incidental or consequential damage of any kind or nature that relate in any way to the products shown herein. For complete warranty information, please refer to Eskridge, Inc.'s Product Warranty that applies to the products shown herein and is incorporated by this reference as if fully set forth. A copy of Eskridge, Inc.'s Product Warranty can be obtained by writing Eskridge, Inc. at P.O. Box 875, 1900 Kansas City Road, Olathe, Kansas 66061



## 77 Series Single Speed



ESKRIDGE....

STRENGTH

RELIABILITY

....NO EQUAL!

**77**  
 single speed

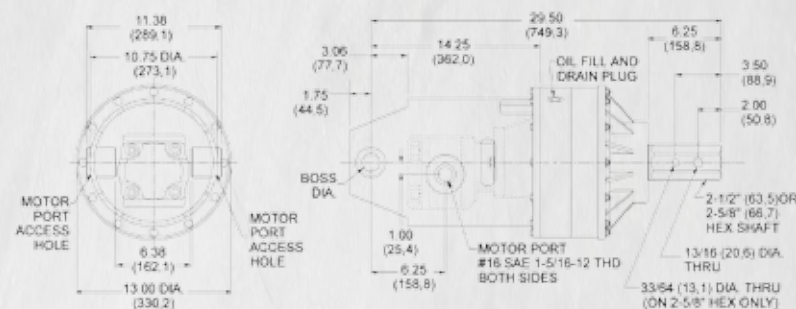
**6.5K**  
**8K**  
**12K**

## 77 Series Single Speed


**77 Series DiggerDrive™**  
**6,500 TO 12,000 FT-LB TORQUE**

Data Sheet PS77\_9\_13

The series 77 is heavy-duty, single-speed, double planetary drive with ease of control in operation. Ideal for use in the rental market. Select from three available torque and speed ranges to fit your application. Eskridge has over 25 years of experience in the manufacture of DiggerDrives™ to dig holes and install anchors in the heavy duty electric utility environment.



SINGLE-SPEED OPERATION  
 HEAVY DUTY, HIGH EFFICIENCY, DOUBLE PLANETARY DRIVE

SHAFT SIDE LOADING NOT RECOMMENDED.

## TECHNICAL SPECIFICATIONS

MOTOR MOUNT: SAE "C" 2-BOLT  
 MOTORS: SINGLE SPEED GEARTYPE  
 RATED OUTPUT TORQUES: TO 12,000 ft. lb (16,272 N·m)  
 MAXIMUM SYSTEM PRESSURE: 2,500 psi (172.4 bar)  
 OUTPUT SHAFT OPTIONS: 2" (50.8mm), 2-1/2" (63.5 mm) AND 2-5/8" (66.7 mm) HEX  
 SHAFT PULL-OUT LOAD: 15,000 lb (6818 kg)  
 SHAFT PRESSURE LOAD: 15,000 lb (6818 kg)  
 OIL CAPACITY: 6.5 pts (3.1 L)  
 BAIL BOSS DIAMETER: 1.26" (32.00 mm) OR 1.51" (38.35 mm)  
 WEIGHT: 250 lb (113.4 kg) WITH MOTOR

## 77 Series Single Speed

## Performance Data

| MODEL | GEAR RATIO | MOTOR | MOTOR PRESSURE<br>Δpsi (Δbar) | FLOW<br>gpm (l/min) | RATED TORQUE*<br>ft-lb. (N-m) | SPEED<br>rpm |
|-------|------------|-------|-------------------------------|---------------------|-------------------------------|--------------|
| 77BA  | 70:1       | 03/59 | 2,400<br>(166)                | 40<br>(152)         | 12,000<br>(16,272)            | 19           |
| 77BC  | 46:1       | 03/59 | 2,400<br>(166)                | 40<br>(152)         | 8,000<br>(10,848)             | 30           |
| 77BD  | 38:1       | 03/59 | 2,400<br>(166)                | 40<br>(152)         | 6,500<br>(8,814)              | 36           |

\* Maximum intermittent value.

- STARTING TORQUES ARE APPROXIMATELY 25% LESS THAN RUNNING TORQUE.
- SYSTEM BACK PRESSURE WILL REDUCE THE RUNNING TORQUES PROPORTIONALLY.
- BACK PRESSURE SHOULD BE LIMITED TO 100 psi (6.9 bar).
- MAXIMUM FLOW RATE IS DEPENDENT UPON MOTOR DISPLACEMENTS.
- HIGH ALLOY HEAT TREATED BAIL BOSS PINS REQUIRED (CUSTOMER PROVIDED).

| MODEL  | SHAFT                 | BOSS         | Motor Supplier |
|--|-----------------------|--------------|----------------|
| 77BA   | 2 2" HEX <sup>1</sup> | 4 1 1/4" DIA | F - Factory    |
| 77BC   | 5 2 1/2" HEX          | 5 1 1/2" DIA | U - User       |
| 77BD   | 6 2 5/8" HEX          |              |                |
| <small>1 Model 77BD only</small>   |                       |              |                |
| <div style="display: flex; justify-content: space-around;"> <div style="border: 1px solid black; padding: 5px;"> <b>Motor Part Number</b><br/><br/>           03<br/>23 Winch gear motors<br/>59 High psi seal         </div> <div style="border: 1px solid black; padding: 5px;"> <b>OPTIONS</b><br/><br/>           R ROTATED BAIL (90°)<br/>FOR BACKHOE AND<br/>EXCAVATOR USE         </div> </div> |                       |              |                |

For other motor options  
not listed, consult factory.

## IMPORTANT INFORMATION...

ESKRIDGE, INC. EXPRESSLY DISCLAIMS ANY IMPLIED WARRANTY OF MERCHANTABILITY OR FITNESS FOR ANY PARTICULAR PURPOSE FOR THE PRODUCTS SHOWN HEREIN.

Any claims based on or related to the products shown herein will be satisfied only by repair or replacement in Eskridge, Inc.'s sole discretion to the extent covered by Eskridge's Product Warranty. Eskridge, Inc. is not liable for incidental or consequential damage of any kind or nature that relate in any way to the products shown herein. For complete warranty information, please refer to Eskridge, Inc.'s Product Warranty that applies to the products shown herein and is incorporated by this reference as if fully set forth. A copy of Eskridge, Inc.'s Product Warranty can be obtained by writing Eskridge, Inc. at P.O. Box 875, 1900 Kansas City Road, Olathe, Kansas 66061

## 78 Series Two Speed



ESKRIDGE....

STRENGTH

RELIABILITY

....NO EQUAL!

78

two speed

12K

9.5K

ESKRIDGE



## 78 Series Two Speed



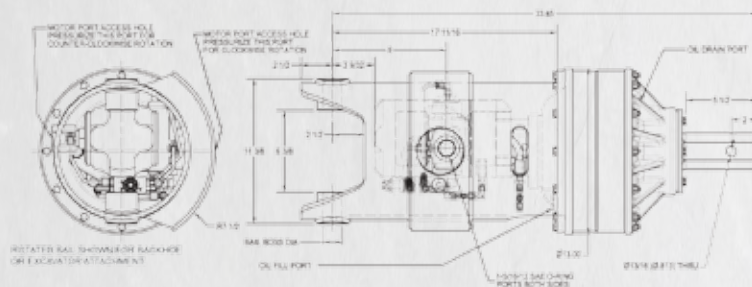
## 78 Series High Pressure DiggerDrive™ TO 12,000 FT-LB TORQUE

K2 Kick-Down Hydrasync, automatically "Shifts on the fly"

The series 78, Kick-Down "Hydrasync" uses a high-efficiency double planetary for high torque requirements, like foundation anchor installation and drilling larger holes for piers.

The 78 is available with automatic "Kickdown" option (when operations require it). The digger will shift to low-speed, high-torque position while you keep digging. There is no need for an additional hydraulic line or controls to shift the motor. The motor on this DiggerDrive accommodates hydraulic pressures up to 3,500psi which makes it ideal for use with today's high-production excavators and skid-steers. The construction series of the 78 drive head has a plate-and-bolt retained shaft replacing the retaining ring to accommodate the more rugged use typical with the construction industry.

The "Kickdown" valve option comes pre-set from the factory at 2,750 psi so, the digger will shift from high-speed to low-speed when the motor inlet pressure rises to 2,750 psi. It will stay in low-speed until the digger stops when the controls are centered.



TWO-SPEED, SHIFT-ON-THE-FLY HEAVY DUTY, HIGH EFFICIENCY,  
DOUBLE PLANETARY DRIVE

SHAFT SIDE LOADING NOT RECOMMENDED

## TECHNICAL SPECIFICATIONS

MOTOR MOUNT: SAE "C" 2-BOLT AND 4-BOLT

MOTORS: 2-SPEED GEAR TYPE

RATED OUTPUT TORQUES: TO 12,000 ft-lb (16,270 N-m)

MAXIMUM SYSTEM PRESSURE: 3,500 psi (241.3 bar)

SHIFTING PRESSURE: Factory set to 2,750 psi (189.6 bar)

MOTOR CASE DRAIN: NOT REQUIRED unless back-pressure exceeds 500PSI

OUTPUT SHAFT OPTIONS: 2-1/2" (50.8 mm) OR 2-5/8" (66.8 mm) HEX

SHAFT PULL-OUT LOAD: 15,000 lb (6.818 kN)

SHAFT PRESSURE LOAD: 15,000 lb (6,818 kgf)

OIL CAPACITY: 6.5 pts (3.1 l)

BAIL BOSS DIAMETER: 1.26" (32.0 mm) OR 1.51" (38.4 mm)

WEIGHT: 370 lb (168.2 kg) WITH MOTOR

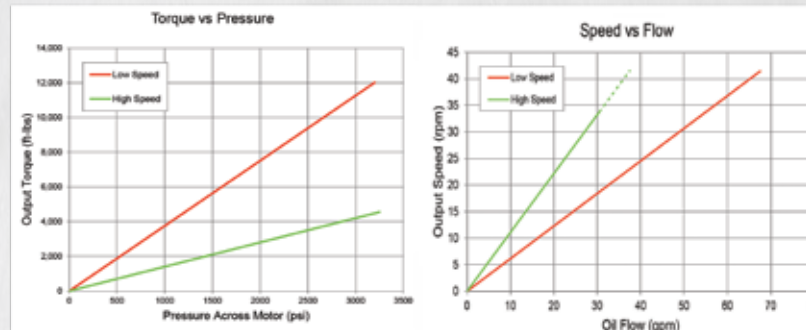
## 78 Series Two Speed

### Performance Data

| MODEL | GEAR RATIO | MOTOR | MOTOR PRESSURE<br>Psi (bar) | FLOW<br>gpm (l/min) | RATED TORQUE/ SPEED          |                     |
|-------|------------|-------|-----------------------------|---------------------|------------------------------|---------------------|
|       |            |       |                             |                     | ft-lb. (N-m) /<br>HIGH SPEED | rpm<br>LOW SPEED    |
| 78-48 | 47:8:1     | #13   | 3,250<br>(224)              | 40<br>(152)         | 4,550(6170)/44rpm            | 12,026(16305)/24rpm |

\* Maximum intermittent value

- \* STARTING TORQUES ARE APPROXIMATELY 25% LESS THAN RUNNING TORQUE.
- \* SYSTEM BACK PRESSURE WILL REDUCE THE RUNNING TORQUES PROPORTIONALLY.
- \* BACK PRESSURE SHOULD BE LIMITED TO 500 psi (34.5 bar).
- \* MAXIMUM FLOW RATE IS DEPENDENT UPON MOTOR DISPLACEMENTS.
- \* HIGH ALLOY HEAT TREATED BALL BESS PINS REQUIRED (CUSTOMER PROVIDED).



| MODEL | SHAFT                          | BOSS                         | Motor Supplier          |
|-------|--------------------------------|------------------------------|-------------------------|
| 7848  | 5P 2 1/2" HEX<br>6P 2 5/8" HEX | 4 1 1/4" DIA<br>5 1 1/2" DIA | F - Factory<br>U - User |

| Motor Part Number   | OPTIONS   |
|---------------------|---|
| 113 (high psi seal) | R ROTATED BAIL (90°) FOR BACKHOE AND EXCAVATOR USE<br>K2 KICKDOWN FORWARD AND REVERSE |

For other motor options not listed, consult factory.

**IMPORTANT INFORMATION...**

ESKRIDGE, INC. EXPRESSLY DISCLAIMS ANY IMPLIED WARRANTY OF MERCHANTABILITY OR FITNESS FOR ANY PARTICULAR PURPOSE FOR THE PRODUCTS SHOWN HEREIN.

ANY CLAIMS BASED ON OR RELATED TO THE PRODUCTS SHOWN HEREIN WILL BE SATISFIED ONLY BY REPAIR OR REPLACEMENT IN ESKRIDGE, INC.'S SOLE DISCRETION TO THE EXTENT COVERED BY LARGO'S PRODUCT WARRANTY. LARGO, INC. IS NOT LIABLE FOR INCIDENTAL OR CONSEQUENTIAL DAMAGE OF ANY KIND OR NATURE THAT RELATE IN ANY WAY TO THE PRODUCTS SHOWN HEREIN. FOR SAMPLE WARRANTY INFORMATION, PLEASE REFER TO ESKRIDGE, INC.'S PRODUCT WARRANTY THAT APPLIES TO THE PRODUCTS SHOWN HEREIN AND IS INCORPORATED BY THIS REFERENCE AS FULLY SET FORTH. A COPY OF ESKRIDGE, INC.'S PRODUCT WARRANTY CAN BE OBTAINED BY WRITING ESKRIDGE, INC. AT P.O. BOX 8675, 1900 KANSAS CITY ROAD, OLAH, KANSAS 66061.



## 75 Series Two Speed

ESKRIDGE....

STRENGTH

RELIABILITY

....NO EQUAL!

**75**  
 two speed **20K**

ESKRIDGE

## 75 Series Two Speed

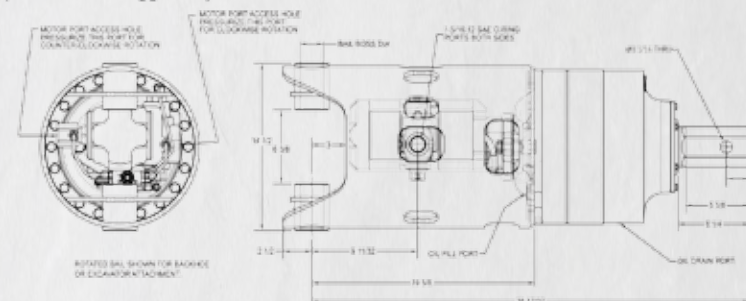
ESKRIDGE

**75 Series High Pressure  
DiggerDrive™**
**4,300 TO 20,000 FT-LB TORQUE**
**K2 Kick-Down Hydrasync, automatically "Shifts on the fly"**

The series 75, "Hydrasync" uses a high-efficiency double planetary for high torque requirements, like foundation anchor installation and drilling larger holes for piers.

The 75 is available with automatic "Kickdown" option (when operations require it). The digger will shift to low-speed, high-torque position while you keep digging. There is no need for an additional hydraulic line or controls to shift the motor. The motor on this DiggerDrive accommodates hydraulic pressures up to 3,500psi which makes it ideal for use with today's high-production excavators and skid steers. The construction series of 75 drive head has a Load-N-Lock shaft retainer replacing the retaining ring to accommodate the more rugged use typical with the construction industry.

The "Kickdown" valve option comes pre-set from the factory at 2,750 psi so, the digger will shift from high-speed to low-speed when the motor inlet pressure rises to 2,750psi. It will stay in low-speed until the digger stops when the controls are centered.



TWO-SPEED, SHIFT-ON-THE-FLY, HEAVY DUTY, HIGH EFFICIENCY,  
DOUBLE PLANETARY DRIVE  
SHAFT SIDE LOADING NOT RECOMMENDED.

**TECHNICAL SPECIFICATIONS**

MOTOR MOUNT: SAE "C" 2-BOLT AND 4-BOLT  
 MOTORS: 2-SPEED SPEED GEAR TYPE  
 RATED OUTPUT TORQUES: TO 20,000 ft-lb (27,112 N-m)  
 MAXIMUM SYSTEM PRESSURE: 3,500 psi (241.3 bar)  
 SHIFTING PRESSURE: Factory set to 2,750 psi (189.6 bar)  
 MOTOR CASE DRAIN: NOT REQUIRED unless back-pressure exceeds 500PSI  
 OUTPUT SHAFT OPTIONS: 2-5/8" (66.7 mm) OR 3" (76.2mm) HEX  
 SHAFT PULL-OUT LOAD: 30,000 lb (13,638 kgf)  
 SHAFT PRESSURE LOAD: 30,000 lb (13,638 kgf)  
 OIL CAPACITY: 10 pts (4.76 l)  
 BAIL BOSS DIAMETER: 1.51" (38.35 mm) OR 2.01" (51.05mm)  
 WEIGHT: 510 lb (231.8 kg) WITH MOTOR



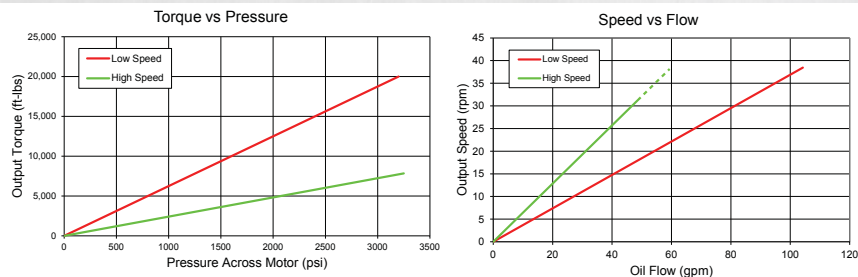
## 75K Series Two Speed

## Performance Data

| MODEL | GEAR RATIO | MOTOR | MOTOR PRESSURE<br>$\Delta$ psi ( $\Delta$ bar) | FLOW<br>gpm (l/min) | RATED TORQUE/<br>ft.-lb. (N-m)<br>HIGH SPEED | SPEED<br>rpm<br>LOW SPEED |
|-------|------------|-------|--|---------------------|--|---------------------------|
| 75-51 | 51.42:1    | 112   | 3,250(224)                                     | 40 (151)            | 7,840(10630)/26 rpm                          | 20,000(27116)/15 rpm      |

\* Maximum intermittent Value.

- STARTING TORQUES ARE APPROXIMATELY 25% LESS THAN RUNNING TORQUE.
- SYSTEM BACK PRESSURE WILL REDUCE THE RUNNING TORQUES PROPORTIONALLY.
- BACK PRESSURE SHOULD BE LIMITED TO 500 psi (34.5 bar).
- MAXIMUM FLOW RATE IS DEPENDENT UPON MOTOR DISPLACEMENTS.
- HIGH ALLOY HEAT TREATED BAIL BOSS PINS REQUIRED (CUSTOMER PROVIDED).



| MODEL | SHAFT                    | BOSS                     | Motor Supplier          |
|-------|--------------------------|--------------------------|-------------------------|
| 7551  | 6 2 5/8" HEX<br>3 3" HEX | 5 1 1/2" DIA<br>2 2" DIA | F - Factory<br>U - User |

| Motor Part Number   | OPTIONS   |
|---|---|
| 112 (High PSI Capacity)<br>For other motor options not listed, consult factory. | R ROTATED BAIL (90°) FOR BACKHOE AND EXCAVATOR USE<br>K2 KICKDOWN FORWARD AND REVERSE |

## IMPORTANT INFORMATION...

ESKRIDGE, INC. EXPRESSLY DISCLAIMS ANY IMPLIED WARRANTY OF MERCHANTABILITY OR FITNESS FOR ANY PARTICULAR PURPOSE FOR THE PRODUCTS SHOWN HEREIN.

Any claims based on or related to the products shown herein will be satisfied only by repair or replacement in Eskridge, Inc.'s sole discretion to the extent covered by Eskridge's Product Warranty. Eskridge, Inc. is not liable for incidental or consequential damage of any kind or nature that relate in any way to the products shown herein. For complete warranty information, please refer to Eskridge, Inc.'s Product Warranty that applies to the products shown herein and is incorporated by this reference as if fully set forth. A copy of Eskridge, Inc.'s Product Warranty can be obtained by writing Eskridge, Inc. at P.O. Box 875, 1900 Kansas City Road, Olathe, Kansas 66061

## D440 Single/Two Speed



ESKRIDGE....

STRENGTH

RELIABILITY

....NO EQUAL!

**440**  
single or two  
speed **36K**

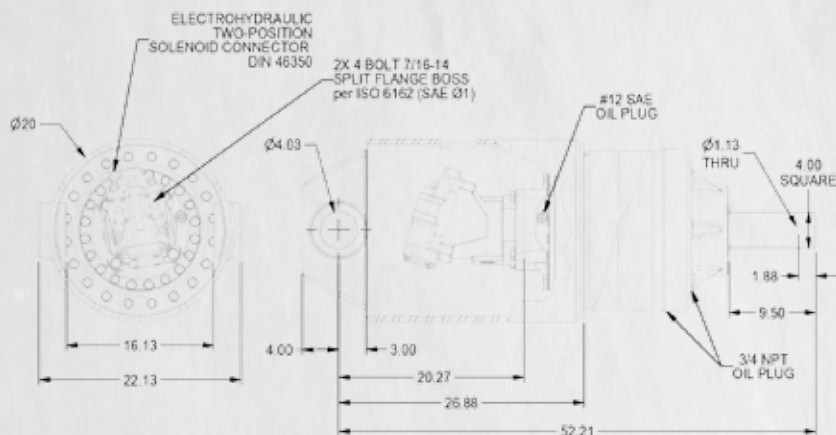
## D440 Single/Two Speed



## D440 Series DiggerDrive

Data Sheet PSD440QD\_3\_10

Series D440 heavy-duty planetary drive digger is ideal for construction, anchor setting, and the utility digger markets. This digger is available in a single ratio and can be purchased with or without a motor. Eskridge has over 25 years of experience in the manufacture of DiggerDrives™.



HEAVY DUTY, HIGH EFFICIENCY, TRIPLE PLANETARY DRIVE  
SHAFT SIDE LOADING NOT RECOMMENDED.

## TECHNICAL SPECIFICATIONS

MOTOR MOUNT: SAE "D" 4-BOLT  
MOTOR OPTION: TWO SPEED BENT AXIS PISTON WITH AXIAL PORTS  
OPTIONAL MOTOR PART NUMBER: 01-304-0950  
MOTOR RECOMMENDATIONS: 110CC MAX, 74CC MIN AT 5000 PSI AND 60 GPM  
RATED OUTPUT TORQUES: TO 36,000 ft-lb (48,809 N-m)  
MAXIMUM SYSTEM PRESSURE: 5,000 psi (345 bar)  
OUTPUT SHAFT: 4 in (101.6 mm) SQUARE  
SHAFT PULL-OUT: 30,000 lb (27,240 kg)  
PRESSURE LOAD: 45,000 lb (22,700 kg)  
OIL CAPACITY: 4.4 gal (16.8 L)  
BAIL BOSS DIAMETER: 4.02 in (102.1 mm)  
WEIGHT: 1,190 lb (540 kg) WITH MOTOR, 1,090 lb (494 kg) WITHOUT MOTOR

### D440 Single/Two Speed

## Technical Data

| MODEL | GEAR RATIO | MOTOR CODE | MOTOR PRESSURE         | FLOW                  | RATED TORQUE / SPEED               |                                     |
|-------|------------|------------|------------------------|-----------------------|------------------------------------|-------------------------------------|
|       |            |            |                        |                       | HIGH SPEED                         | LOW SPEED                           |
| 44081 | 81.25:1    | 95         | 5,000 psi<br>(345 bar) | 60 gpm<br>(227 l/min) | 21,900 ft-lb (29,690 N-m) / 38 rpm | 36,000* ft-lb (48,810 N-m) / 24 rpm |

\*MAXIMUM INTERMITTENT VALUE.

- STARTING TORQUES ARE APPROXIMATELY 25% LESS THAN RUNNING TORQUE.
- SYSTEM BACK PRESSURE WILL REDUCE THE RUNNING TORQUES PROPORTIONALLY.
- BACK PRESSURE SHOULD BE LIMITED TO 100 psi (6,9 bar).
- HIGH ALLOY HEAT TREATED BAIL BOSS PINS REQUIRED (CUSTOMER PROVIDED).

| MODEL | SHAFT          | BOSS             | MOTOR SUPPLIER          |
|-------|----------------|------------------|-------------------------|
| 44081 | 4 - 4in SQUARE | 4 - 4in DIAMETER | F - FACTORY<br>U - USER |

|       |   |   |  |  |   |   |
|-------|---|---|--|--|---|---|
| 44081 | 4 | 4 |  |  | D | 9 |
|-------|---|---|--|--|---|---|

| MOTOR PART NUMBER           | MOTOR MOUNT          | INPUT SPLINE   |
|-----------------------------|----------------------|----------------|
| 95 - 110cc<br>NN - NO MOTOR | D - SAE "D" (4 BOLT) | 9 - 13T 8/16DP |

### IMPORTANT INFORMATION...

**ESKRIDGE, INC. EXPRESSLY DISCLAIMS ANY IMPLIED WARRANTY OF MERCHANTABILITY OR FITNESS FOR ANY PARTICULAR PURPOSE FOR THE PRODUCTS SHOWN HEREIN.**

**ANY PARTICULAR PURPOSE OF THE PRODUCTS SHOWN HEREIN.**

Any claims based on or related to the products shown herein will be satisfied only by repair or replacement in Eskridge, Inc.'s sole discretion to the extent covered by Eskridge's Product Warranty. Eskridge, Inc. is not liable for incidental or consequential damage of any kind or nature that relate in any way to the products shown herein. For complete warranty information, please refer to Eskridge, Inc.'s Product Warranty that applies to the products shown herein and is incorporated by this reference as if fully set forth. A copy of Eskridge, Inc.'s Product Warranty can be obtained by writing Eskridge, Inc. at P.O. Box 875, 1900 Kansas City Road, Olathe, Kansas 66061



D600 Single/Two Speed



**ESKRIDGE....**

**STRENGTH**

**RELIABILITY**

**....NO EQUAL!**

**600**  
single or two  
speed **50K**

**ESKRIDGE**

D600 Single/Two Speed

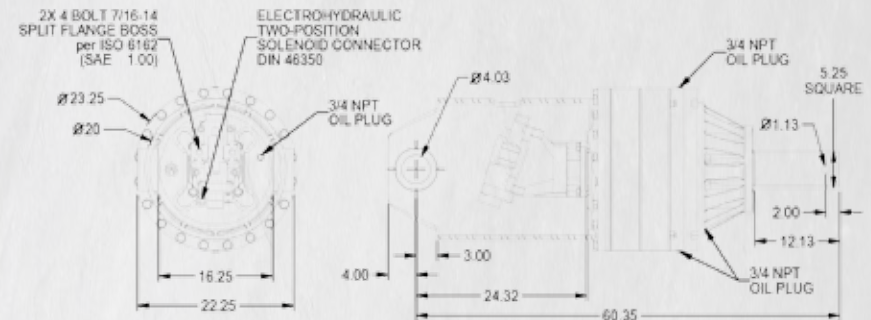


## D600 Series Digger Drive

### 50,000 FT-LB TORQUE

Data Sheet PS600QD\_07\_11

Series D600 heavy-duty planetary digger drive is ideal for construction, anchor setting, and the utility digger markets. This digger drive is available in a single ratio and can be purchased with or without a motor. Eskridge has over 25 years of experience in the manufacture of Digger-Drives™.



HEAVY DUTY, HIGH EFFICIENCY, COMPOUND PLANETARY DRIVE  
SHAFT SIDE LOADING NOT RECOMMENDED.

#### TECHNICAL SPECIFICATIONS

MOTOR MOUNT OPTIONS: SAE "D" 4-BOLT, AND SAE "E" 4-BOLT  
MOTOR OPTION: TWO SPEED BENT AXIS PISTON MOTOR WITH AXIAL PORTS  
OPTIONAL MOTOR PART NUMBER: 01-304-0960  
MOTOR RECOMMENDATIONS: 160 CC MAX, 75 CC MIN AT 5000 PSI AND 60 GPM  
RATED OUTPUT TORQUES: TO 50,000 ft-lb (67,790 N-m)  
MAXIMUM INPUT SPEED: 3000 rpm  
OUTPUT SHAFT: 5.25 in (133.4 mm) SQUARE  
SHAFT PULL-OUT: 50,000 lb (22,700 kg)  
PRESSURE LOAD: 95,000 lb (43,080 kg)  
OIL CAPACITY: 9.5 gal (36 L)  
BAIL BOSS DIAMETER: 4.02 in (102.1 mm)  
WEIGHT: 1,900 lb (860 kg) WITHOUT MOTOR

## D600 Single/Two Speed

## Technical Data

| MODEL | GEAR RATIO | MOTOR CODE | MOTOR PRESSURE         | FLOW                  | RATED TORQUE / SPEED               |                                     |
|-------|------------|------------|------------------------|-----------------------|------------------------------------|-------------------------------------|
|       |            |            |                        |                       | HIGH SPEED                         | LOW SPEED                           |
| 60089 | 89.4:1     | 96         | 5,000 psi<br>(345 bar) | 60 gpm<br>(227 l/min) | 22,500 ft-lb (30,500 N-m) / 30 rpm | 50,000* ft-lb (67,790 N-m) / 15 rpm |

\*MAXIMUM INTERMITTENT VALUE.

- STARTING TORQUES ARE APPROXIMATELY 25% LESS THAN RUNNING TORQUE.
- SYSTEM BACK PRESSURE WILL REDUCE THE RUNNING TORQUES PROPORTIONALLY.
- BACK PRESSURE SHOULD BE LIMITED TO 100 psi (6,9 bar).
- HIGH ALLOY HEAT TREATED BAIL BOSS PINS REQUIRED (CUSTOMER PROVIDED).

| MODEL | SHAFT              | BOSS             | MOTOR SUPPLIER          |
|-------|--------------------|------------------|-------------------------|
| 60089 | 5 - 5 1/4in SQUARE | 4 - 4in DIAMETER | F - FACTORY<br>U - USER |

|       |   |   |  |  |  |  |
|-------|---|---|--|--|--|--|
| 60089 | 5 | 4 |  |  |  |  |
|-------|---|---|--|--|--|--|

| MOTOR PART NUMBER            | MOTOR MOUNT          | INPUT SPLINE   |
|------------------------------|----------------------|----------------|
| 96 - 160 CC<br>NN - NO MOTOR | D - SAE "D" (4 BOLT) | 9 - 13T 8/16DP |

## IMPORTANT INFORMATION...

ESKRIDGE, INC. EXPRESSLY DISCLAIMS ANY IMPLIED WARRANTY OF MERCHANTABILITY OR FITNESS FOR ANY PARTICULAR PURPOSE FOR THE PRODUCTS SHOWN HEREIN.

Any claims based on or related to the products shown herein will be satisfied only by repair or replacement in Eskridge, Inc.'s sole discretion to the extent covered by Eskridge's Product Warranty. Eskridge, Inc. is not liable for incidental or consequential damage of any kind or nature that relate in any way to the products shown herein. For complete warranty information, please refer to Eskridge, Inc.'s Product Warranty that applies to the products shown herein and is incorporated by this reference as if fully set forth. A copy of Eskridge, Inc.'s Product Warranty can be obtained by writing Eskridge, Inc. at P.O. Box 875, 1900 Kansas City Road, Olathe, Kansas 66061

## D1000 Single/Two Speed

**ESKRIDGE....**

**STRENGTH**

**RELIABILITY**

**....NO EQUAL!**

**1000**  
single or two speed

**83K**

**ESKRIDGE**



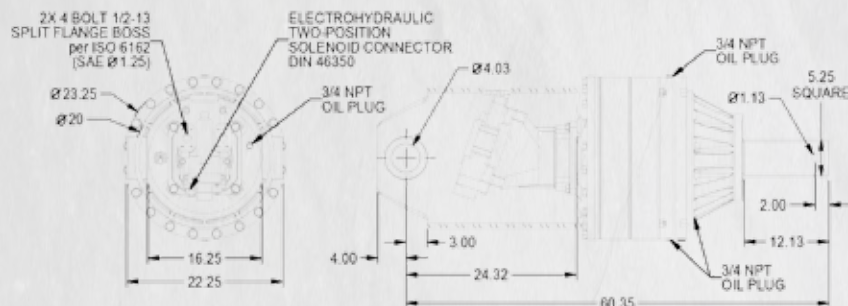
## D1000 Single/Two Speed



## D1000 Series Digger Drive

Data Sheet PSD1000QD 07\_11

Series D1000 heavy-duty planetary digger drive is ideal for construction, anchor setting, and the utility digger markets. This Digger drive is available in a single ratio and can be purchased with or without a motor. Eskridge has over 25 years of experience in the manufacture of DiggerDrives™ and Anchor Drives.



HEAVY DUTY, HIGH EFFICIENCY, COMPOUND PLANETARY DRIVE  
SHAFT SIDE LOADING NOT RECOMMENDED.

## TECHNICAL SPECIFICATIONS

MOTOR MOUNT OPTIONS: SAE "E" 4-BOLT  
MOTOR OPTION: TWO SPEED BENT AXIS PISTON MOTOR WITH AXIAL PORTS  
OPTIONAL MOTOR PART NUMBER: 01-304-0970  
MOTOR RECOMMENDATIONS: 240 CC MAX, 75 CC MIN AT 5000 PSI AND 60 GPM  
RATED OUTPUT TORQUES: TO 83,000 ft-lb (112,530 N-m)  
MAXIMUM INPUT SPEED: 3000 rpm  
OUTPUT SHAFT: 5.25 in (133.4 mm) SQUARE  
SHAFT PULL-OUT: 50,000 lb (22,700 kg)  
PRESSURE LOAD: 95,000 lb (43,080 kg)  
OIL CAPACITY: 9.5 gal (25.6 L)  
BAIL BOSS DIAMETER: 4.02 in (102.1 mm)  
WEIGHT: 1,900 lb (820 kg) WITHOUT MOTOR

## D1000 Single/Two Speed

## Technical Data

| MODEL  | GEAR RATIO | MOTOR CODE | MOTOR PRESSURE         | FLOW                  | RATED TORQUE / SPEED               |                                     |
|--------|------------|------------|------------------------|-----------------------|------------------------------------|-------------------------------------|
|        |            |            |                        |                       | HIGH SPEED                         | LOW SPEED                           |
| 100096 | 96.0:1     | 97         | 5,000 psi<br>(345 bar) | 60 gpm<br>(227 l/min) | 24,500 ft-lb (33,200 N-m) / 28 rpm | 83,300* ft-lb (112,940 N-m) / 9 rpm |

\*MAXIMUM INTERMITTENT VALUE.

- STARTING TORQUES ARE APPROXIMATELY 25% LESS THAN RUNNING TORQUE.
- SYSTEM BACK PRESSURE WILL REDUCE THE RUNNING TORQUES PROPORTIONALLY.
- BACK PRESSURE SHOULD BE LIMITED TO 100 psi (6,9 bar).
- HIGH ALLOY HEAT TREATED BAIL BOSS PINS REQUIRED (CUSTOMER PROVIDED).

```

graph TD
    MODEL[MODEL  
100096] --- SHAFT[SHAFT  
5 - 5 1/4in  
SQUARE]
    MODEL --- SUPPLIER[MOTOR SUPPLIER  
F - FACTORY  
U - USER]
    SHAFT --- BOSS[BOSS  
4 - 4in DIAMETER]
    SHAFT --- MPN[MOTOR PART NUMBER  
97 - 240 CC  
NN - NO MOTOR]
    SHAFT --- MM[MOTOR MOUNT  
E - SAE "E" (4 BOLT)]
    SHAFT --- IS[INPUT SPLINE  
5 - 15T 8/16DP]
    BOSS --- MPN
    BOSS --- MM
    BOSS --- IS
    MPN --- MPN2[97 - 240 CC  
NN - NO MOTOR]
    MM --- MM2[E - SAE "E" (4 BOLT)]
    IS --- IS2[5 - 15T 8/16DP]
  
```

### IMPORTANT INFORMATION...

**ESKRIDGE, INC. EXPRESSLY DISCLAIMS ANY IMPLIED WARRANTY OF MERCHANTABILITY OR FITNESS FOR ANY PARTICULAR PURPOSE FOR THE PRODUCTS SHOWN HEREIN.**

ANY PARTICULAR FOR USE OF THE PRODUCTS SHOWN HEREIN.

Any claims based on or related to the products shown herein will be satisfied only by repair or replacement in Eskridge, Inc.'s sole discretion to the extent covered by Eskridge's Product Warranty. Eskridge, Inc. is not liable for incidental or consequential damage of any kind or nature that relate in any way to the products shown herein. For complete warranty information, please refer to Eskridge, Inc.'s Product Warranty that applies to the products shown herein and is incorporated by this reference as if fully set forth. A copy of Eskridge, Inc.'s Product Warranty can be obtained by writing Eskridge, Inc. at P.O. Box 875, 1900 Kansas City Road, Olathe, Kansas 66061

D1400 Single/Two Speed

ESKRIDGE....

STRENGTH

RELIABILITY

....NO EQUAL!

**1400**  
 single or two  
 speed **115K**

ESKRIDGE

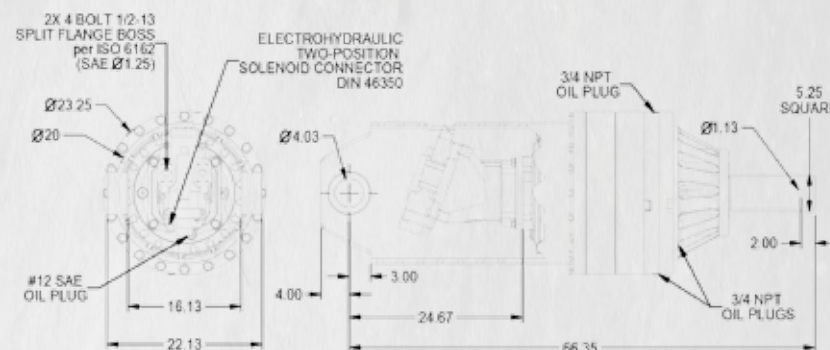
D1400 Single/Two Speed

ESKRIDGE

**D1400 Series Digger Drive**  
**115,000 FT-LB TORQUE**

Data Sheet PSD1400QD\_07\_11

Series D1400 heavy-duty planetary drive is ideal for the construction, anchor setting, and the utility digger markets. This digger drive is available in a single ratio and can be purchased with or without a motor. Eskridge has over 25 years of experience in the manufacture of DiggerDrives™ and Anchor Drives.



HEAVY DUTY, HIGH EFFICIENCY, TRIPLE PLANETARY DRIVE  
 SHAFT SIDE LOADING NOT RECOMMENDED.

**TECHNICAL SPECIFICATIONS**

MOTOR MOUNT OPTIONS: SAE "E" 4-BOLT  
 MOTOR OPTION: TWO SPEED BENT AXIS PISTON MOTOR WITH AXIAL PORTS  
 OPTIONAL MOTOR PART NUMBER: 01-304-0980  
 MOTOR RECOMMENDATIONS: 210 CC MAX, 75 CC MIN AT 5000 PSI AND 60 GPM  
 RATED OUTPUT TORQUES: TO 115,000 ft-lb (155,920 N-m)  
 MAXIMUM INPUT SPEED: 3000 rpm  
 OUTPUT SHAFT: 5.25 in (133.4 mm) SQUARE  
 SHAFT PULL-OUT: 50,000 lb (22,700 kg)  
 PRESSURE LOAD: 95,000 lb (43,080 kg)  
 OIL CAPACITY: 10.25 gal (28.4 L)  
 BAIL BOSS DIAMETER: 4.02 in (102.1 mm)  
 WEIGHT: 2,100 lb (950 kg) WITHOUT MOTOR



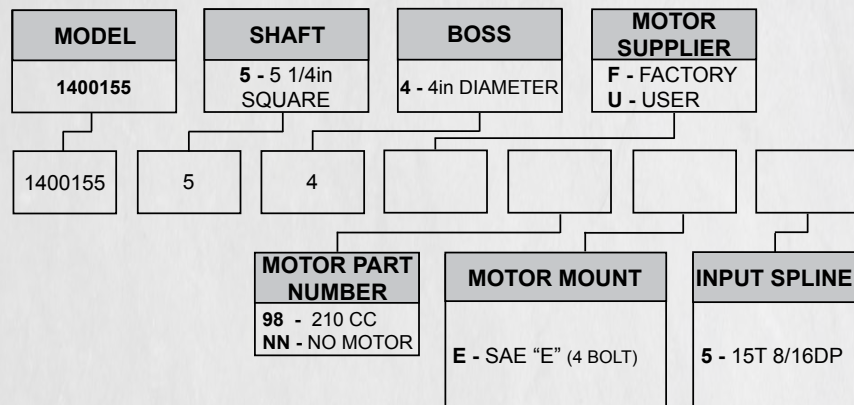
## D1400 Single/Two Speed

## Technical Data

| MODEL   | GEAR RATIO | MOTOR CODE | MOTOR PRESSURE         | FLOW                  | RATED TORQUE / SPEED               |   |
|---------|------------|------------|------------------------|-----------------------|------------------------------------|---|
|         |            |            |                        |                       | HIGH SPEED                         | LOW SPEED                               |
| 1400155 | 155.4:1    | 98         | 5,000 psi<br>(345 bar) | 60 gpm<br>(227 l/min) | 49,500 ft-lb (53,550 N-m) / 17 rpm | 115,000* ft-lb<br>(155,920 N-m) / 7 rpm |

\*MAXIMUM INTERMITTENT VALUE.

- STARTING TORQUES ARE APPROXIMATELY 25% LESS THAN RUNNING TORQUE.
- SYSTEM BACK PRESSURE WILL REDUCE THE RUNNING TORQUES PROPORTIONALLY.
- BACK PRESSURE SHOULD BE LIMITED TO 100 psi (6,9 bar).
- HIGH ALLOY HEAT TREATED BAIL BOSS PINS REQUIRED (CUSTOMER PROVIDED).



## D150 Drive Head



**ESKRIDGE....**

**STRENGTH**

**RELIABILITY**

**....NO EQUAL!**

**DH150**

**two speed 150K**

**ESKRIDGE**

## D150 Drive Head

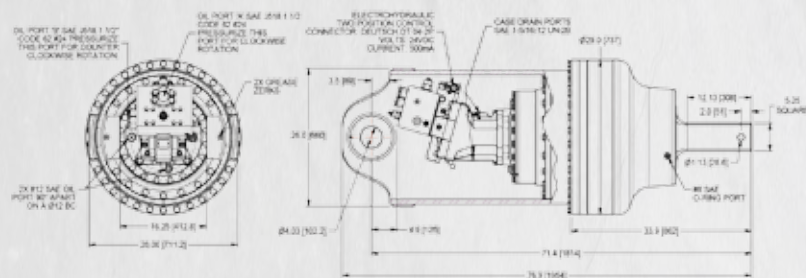


## DH150 Series Anchor Drive

### 150,000 FT-LB TORQUE

Data Sheet PSDDH150QA\_12\_14

The DH150 is ideal for the construction, anchor setting, and utility digger markets. The DH series drive head utilizes a heavy duty three stage planetary gearbox with a patented Load-N-Lock shaft retention system for extreme duty situations. These drive heads use highly efficient variable speed piston motors for maximum speed and torque using todays excavator capabilities. Eskridge has over 40 years of experience in the manufacture of DiggerDrives™.



## TECHNICAL SPECIFICATIONS

## HYDRAULIC MOTOR INFORMATION

PART NUMBER: 01-304-1230  
DISPLACEMENT: 200 CC MAXIMUM, 107 CC MINIMUM  
MAXIMUM PRESSURE: 4900 PSIG (338 Bar)  
MAXIMUM HIGH SPEED FLOW: 105 GPM (400 LPM)  
MAXIMUM LOW SPEED FLOW: 150 GPM (570 LPM)  
TYPE: TWO SPEED AXIAL PISTON MOTOR  
SPEED CONTROL: ELECTRO-HYDRAULIC SOLENOID (ENERGIZED LOW SPEED)  
SAFETY CONTROL: ANTI-SPIN BACK AND PRESSURE PROTECTION SYSTEM  
MOTOR CASE: CASE DRAIN REQUIRED

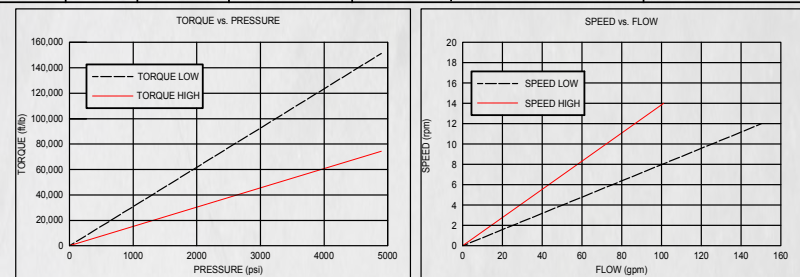
### PLANETARY GEARBOX INFORMATION

RATIO: 224:1  
RATED OUTPUT TORQUE: TO 150,000 ft-lb (203,400 N-m)  
SHAFT PULL-OUT: 125,000 lbf (556,000 N)  
PRESSURE LOAD: 125,000 lbf (556,000 N)  
SHAFT RETENTION: PATENTED LOAD-N-LOCK SHAFT RETENTION  
OIL TYPE: 80W90 EP or GL-5  
OIL CAPACITY: 15.5 gal (59 L)  
WEIGHT: 4,000 lb (1815 kg)  
BAIL PIN: REQUIRES A HIGH ALLOY HEAT TREATED PIN

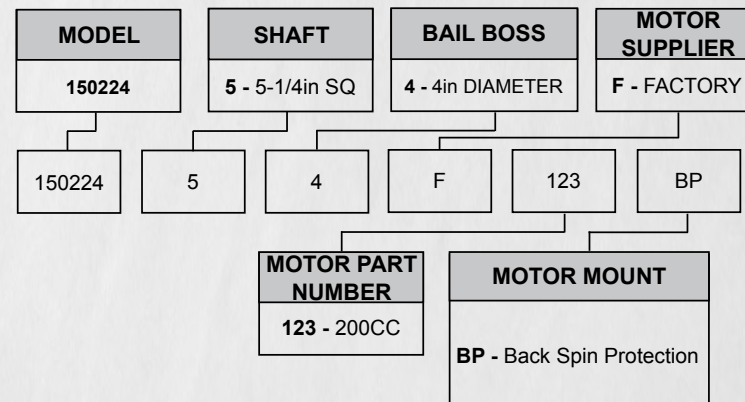
## D150 Drive Head

## Technical Data

| MODEL  | GEAR RATIO | MOTOR CODE | MOTOR PRESSURE         | FLOW                   | RATED TORQUE / SPEED                |                                       |
|--------|------------|------------|------------------------|------------------------|-------------------------------------|---------------------------------------|
|        |            |            |                        |                        | HIGH SPEED                          | LOW SPEED                             |
| 150224 | 224:1      | 123        | 4,900 psi<br>(338 bar) | 50 gpm<br>(189 l/min)  | 74,000 ft-lb<br>(229,000 N-m)/4rpm  | 150,000 ft-lb<br>(203,400 N-m)/7rpm   |
| 150224 | 224:1      | 123        | 4,900 psi<br>(338 bar) | 100 gpm<br>(378 l/min) | 74,000 ft-lb<br>(100,300 N-m)/8 rpm | 150,000 ft-lb<br>(203,400 N-m)/14 rpm |



TORQUE AND SPEED CHARTS ARE BASED ON ANALYTICAL CALCULATIONS THAT USE AVERAGE GEARBOX AND MOTOR EFFICIENCIES. STARTING TORQUES ARE APPROXIMATELY 25% LESS THAN RUNNING TORQUE. SYSTEM BACK PRESSURE WILL REDUCE THE RUNNING TORQUES PROPORTIONALLY.





## DH250 Single/Two Speed

ESKRIDGE....

STRENGTH

RELIABILITY

....NO EQUAL!

DH250  
two speed 250K

ESKRIDGE

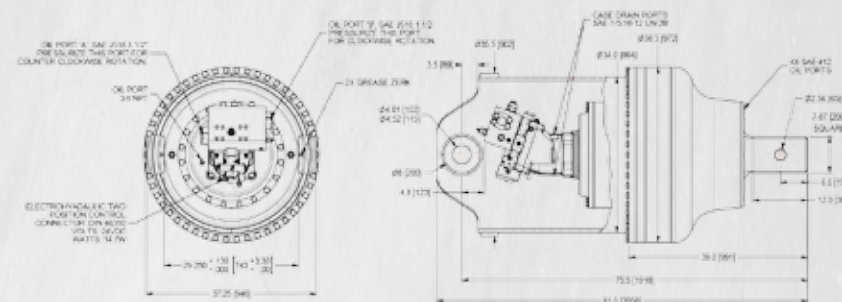
## DH250 Drive Head

ESKRIDGE

DH250 Series Anchor Drive  
250,000 FT-LB TORQUE

Data Sheet PSDDH250QA 09 14

The DH250 is ideal for the construction, anchor setting, and utility digger markets. The DH series drive head utilizes a heavy duty three stage planetary gearbox with a patented Load-N-Lock shaft retention system for extreme duty situations. These drive heads use highly efficient variable speed piston motors for maximum speed and torque using today's excavator capabilities. Eskridge has over 40 years of experience in the manufacture of DiggerDrives™.



## TECHNICAL SPECIFICATIONS

## HYDRAULIC MOTOR INFORMATION

PART NUMBER: 01-304-1100  
 DISPLACEMENT: 217 CC MAXIMUM, 115 CC MINIMUM  
 MAXIMUM PRESSURE: 5000 PSIG (345 Bar)  
 MAXIMUM HIGH SPEED FLOW: 115 GPM (435 LPM)  
 MAXIMUM LOW SPEED FLOW: 140 GPM (530 LPM)  
 TYPE: TWO SPEED BENT AXIS PISTON MOTOR  
 SPEED CONTROL: ELECTRO-HYDRAULIC SOLENOID (ENERGIZED HIGH SPEED)  
 SAFETY CONTROL: ANTI-SPIN BACK AND PRESSURE PROTECTION SYSTEM  
 MOTOR CASE: CASE DRAIN REQUIRED

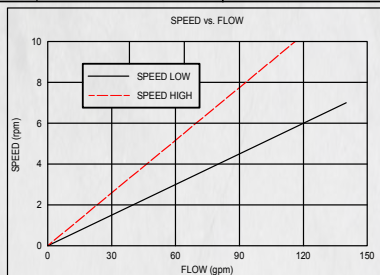
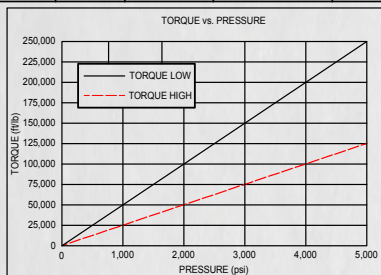
## PLANETARY GEARBOX INFORMATION

RATIO: 334:1  
 RATED OUTPUT TORQUE: TO 250,000 ft-lb (339,000 N-m)  
 SHAFT PULL-OUT: 275,000 lbf (1,223,000 N)  
 PRESSURE LOAD: 275,000 lbf (1,223,000 N)  
 SHAFT RETENTION: PATENTED LOAD-N-LOCK SHAFT RETENTION  
 OIL TYPE: 80W90 EP or GL-5  
 OIL CAPACITY: 23 gal (87 L)  
 WEIGHT: 6,300 lb (2860 kg)  
 BAIL PIN: REQUIRES A HIGH ALLOY HEAT TREATED PIN

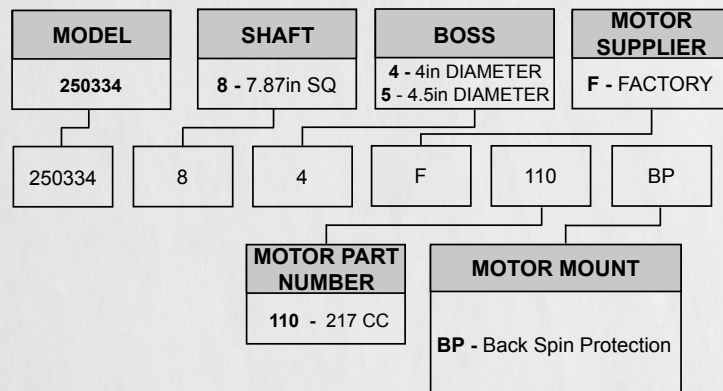
DH250 Drive Head

# Technical Data

| MODEL  | GEAR RATIO | MOTOR CODE | MOTOR PRESSURE         | FLOW                   | RATED TORQUE / SPEED                   |  |
|--------|------------|------------|------------------------|------------------------|--|--|
|        |            |            |                        |                        | HIGH SPEED                             | LOW SPEED                              |
| 250334 | 334:1      | 110        | 5,000 psi<br>(345 bar) | 50 gpm<br>(189 l/min)  | 125,000 ft-lb<br>(169,500 N-m) / 3 rpm | 250,000 ft-lb<br>(339,000 N-m) / 5 rpm |
| 250334 | 334:1      | 110        | 5,000 psi<br>(345 bar) | 100 gpm<br>(378 l/min) | 125,000 ft-lb<br>(169,500 N-m) / 5 rpm | 250,000 ft-lb<br>(339,000 N-m) / 8 rpm |



TORQUE AND SPEED CHARTS ARE BASED ON ANALYTICAL CALCULATIONS THAT USE AVERAGE GEARBOX AND MOTOR EFFICIENCIES. STARTING TORQUES ARE APPROXIMATELY 25% LESS THAN RUNNING TORQUE. SYSTEM BACK PRESSURE WILL REDUCE THE RUNNING TORQUES PROPORTIONALLY.



## IMPORTANT INFORMATION...

ESKRIDGE, INC. EXPRESSLY DISCLAIMS ANY IMPLIED WARRANTY OF MERCHANTABILITY OR FITNESS FOR ANY PARTICULAR PURPOSE FOR THE PRODUCTS SHOWN HEREIN.

Any claims based on or related to the products shown herein will be satisfied only by repair or replacement in Eskridge, Inc.'s sole discretion to the extent covered by Eskridge's Product Warranty. Eskridge, Inc. is not liable for incidental or consequential damage of any kind or nature that relate in any way to the products shown herein. For complete warranty information, please refer to Eskridge, Inc.'s Product Warranty that applies to the products shown herein and is incorporated by this reference as if fully set forth. A copy of Eskridge, Inc.'s Product Warranty can be obtained by writing Eskridge, Inc. at P.O. Box 875, 1900 Kansas City Road, Olathe, Kansas 66061

DH375 Drive Head



ESKRIDGE....

STRENGTH

RELIABILITY

....NO EQUAL!

**DH375**  
two speed **375K**





## DH375 Drive Head

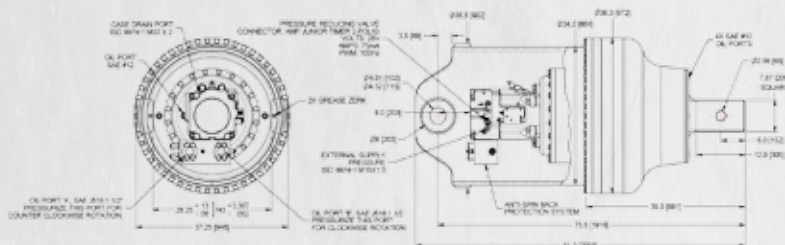


## DH375 Series Anchor Drive

### 375,000 FT-LB TORQUE

Data Sheet PSDDH375QA 09 14

The DH375 is ideal for the construction, anchor setting, and utility digger markets. The DH series drive head utilizes a heavy duty three stage planetary gearbox with a patented Load-N-Lock shaft retention system for extreme duty situations. These drive heads use highly efficient variable speed piston motors for maximum speed and torque using todays excavator capabilities. Eskridge has over 40 years of experience in the manufacture of DiggerDrives™.



## TECHNICAL SPECIFICATIONS

## HYDRAULIC MOTOR INFORMATION

PART NUMBER: 01-304-1040

DISPLACEMENT: 355 CC MAXIMUM, 150 CC MINIMUM

MAXIMUM PRESSURE: 4700 PSIG (324 Bar)

MAXIMUM HIGH SPEED FLOW: 130 GPM (490 LPM)

MAXIMUM LOW SPEED FLOW: 225 GPM (850 LPM)

TYPE: TWO SPEED AXIAL PISTON MOTOR

SPEED CONTROL: ELECTRO-HYDRAULIC

SUPPLY PRESSURE: REQUIRES 200-300 PSI TO SHIFT INTO HIGH SPEED.

SUPPLY PRESSURE: REQUIRES 300-700 PSI TO SHIFT INTO HIGH SPEED  
SAFETY CONTROL: ANTI SPIN BACK AND PRESSURE PROTECTION SYS

SAFETY CONTROL: ANTI-SPIN BACK AND PRESSURE PROTECTION SYSTEM  
MOTOR CASE: CASE DRAIN REQUIRED

MOTOR CASE: CASE DRAIN REQUIRED  
 ANETARY & EARTH INFORMATION

## PLANETARY GEARBOX INFORMATION

RATIO: 334:1

RATED OUTPUT TORQUE: TO 375,000 ft-lb (508,000 N-m)

SHAFT PULL-OUT: 275,000 lbf (1,223,000 N)

PRESSURE LOAD: 275,000 lbf (1,223,000 N)

SHAFT RETENTION: PATENTED LOAD-N-LOCK SHAFT RETENTION

OIL TYPE: 80W90 EP or GL-5

OIL CAPACITY: 23 gal (87 L)

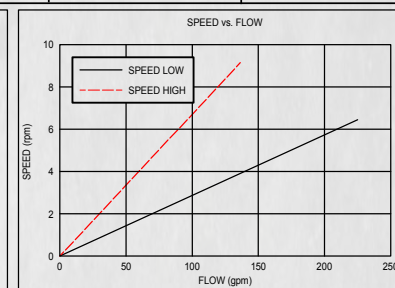
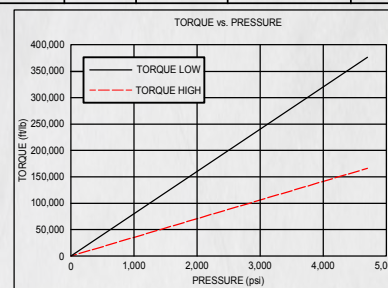
WEIGHT: 6,300 lb (2860 kg)

WEIGHT: 8,350 LB (2,600 kg)  
BAIL PIN: REQUIRES A HIGH

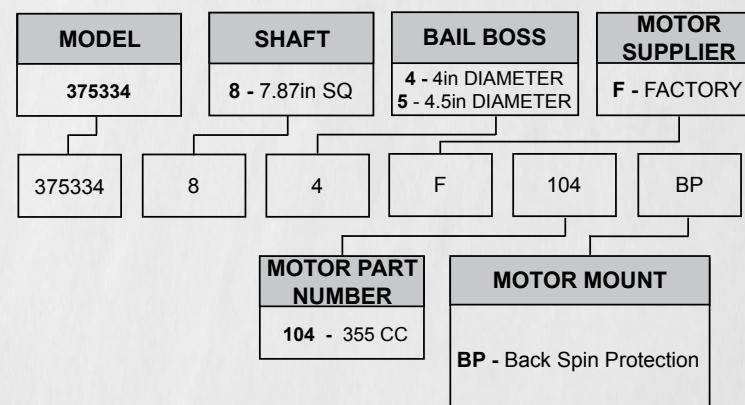
## DH375 Drive Head

## Technical Data

| MODEL  | GEAR RATIO | MOTOR CODE | MOTOR PRESSURE         | FLOW                   | RATED TORQUE / SPEED                   |  |
|--------|------------|------------|------------------------|------------------------|--|--|
|        |            |            |                        |                        | HIGH SPEED                             | LOW SPEED                              |
| 375334 | 334:1      | 104        | 4,700 psi<br>(324 bar) | 50 gpm<br>(189 l/min)  | 169,000 ft-lb<br>(229,000 N-m)/1.5rpm  | 375,000 ft-lb<br>(508,000 N-m)/3.5rpm  |
| 375334 | 334:1      | 104        | 4,700 psi<br>(324 bar) | 100 gpm<br>(378 l/min) | 169,000 ft-lb<br>(229,000 N-m) / 3 rpm | 375,000 ft-lb<br>(508,000 N-m) / 7 rpm |



TORQUE AND SPEED CHARTS ARE BASED ON ANALYTICAL CALCULATIONS THAT USE AVERAGE GEARBOX AND MOTOR EFFICIENCIES. STARTING TORQUES ARE APPROXIMATELY 25% LESS THAN RUNNING TORQUE. SYSTEM BACK PRESSURE WILL REDUCE THE RUNNING TORQUES PROPORTIONALLY.







Concept Torque Solutions' Torq Pin systems are in use worldwide and have an excellent reputation for accuracy, durability and after sales support. Utilizing our patented strain gauge technology, it delivers over 99% accurate torque readings. Data is sent over a wired or wireless connection (a robust 2.4 GHz RF FHSS signal to the handheld display/ datalogger.)

The Torq Pin measures and records torque, inclination and offers the user the opportunity to manually enter pile depth as well as other job specific information.

This torque monitoring and data logging device is intended to replace the OEM pin on the top of the drive head casing. CTS offers pins from stock for all major manufacturers' drive heads, and can provide custom pins upon request.



### TECHNOLOGY

Utilizing strain gages, internal CPU, RAM and other electronics, the TORQ-PIN can guarantee highly accurate, real time torque readings. An inclinometer built into the TORQ-PIN ensures that you maintain a consistent angle of insertion. The TORQ-PIN software records important data such as pile number, final torque, peak torque and elapsed time. This data can be exported to an Excel spreadsheet and transferred by e-mail or memory stick to your engineer/customer.



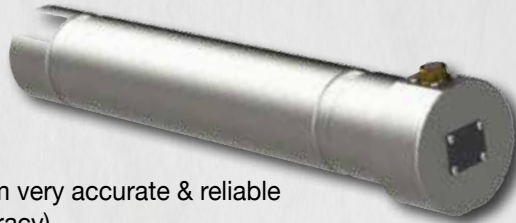
Concept Torque Solutions is pleased to announce their latest product, the Torq Hub. Utilizing the same patented technology as our Torq Pin product, it delivers over 99% accurate torque readings. Data is sent over a robust 2.4 GHz RF FHSS signal to the handheld display/ datalogger. The Torq Hub measures not only torque, but inclination, RPM and crowd force.

This torque monitoring and data logging device is intended to replace the Kelly Bar Adaptor or mount directly onto the drive head output shaft. It is available in 2", 2-1/2", 2-5/8" & 3" hex kelly shaft sizes.



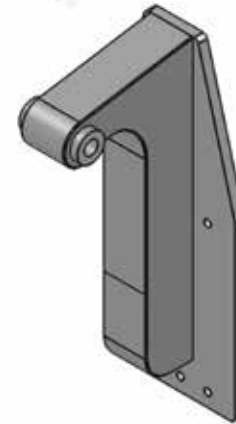
Hardwired/ cable connections are all rugged, overmolded, sheathed cable assemblies with Amphenol Mil-Spec threaded connections.



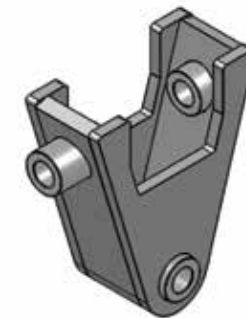


- Torque measurement from very accurate & reliable strain gages (>98% accuracy)
- Systems available for all major OEM drive heads - up to 367,000 ft/lbs.
- No longer reliant on notoriously inaccurate hydraulic pressure differential systems.
- No loss of "stroke" - unlike "spool" type systems our product simply replaces OEM pin on drive head.
- Patent pending technology to eliminate the effects of perpendicular force on the strain gages.
- Inclinator included in every Torq-Pin package
- Calibration report with each Torq-Pin - proving accuracy claimed - traceable to NIST standards.
- Calibrated in-house with test bed capable of up to 400,000 ft/lbs.
- Durable, wired connection eliminates the need for batteries (as in wireless systems)
- Electronics are completely sealed from the environment
- Torque signal output is digital (SAE J1939 CANBUS) - impervious to signal interference, unlike analog systems
- Microprocessor & RAM inside pin head contains all calibration data for the pin - meaning your choice of display (8.4" or 4.3") is literally - "plug and play"
- Pins to replace all major drive head OEM's
- Mechanically engineered with a minimum 2:1 safety factor (using OEM sizes)
- Rugged, mil spec electrical connections

### JIB 6.5K - 36K



The Superior Jib for skidsteers and mini excavators allows for extended reach, pile length and versatility for your Eskridge Drive Head.



Hanger Pivot option allows for piles to be installed from side to side.

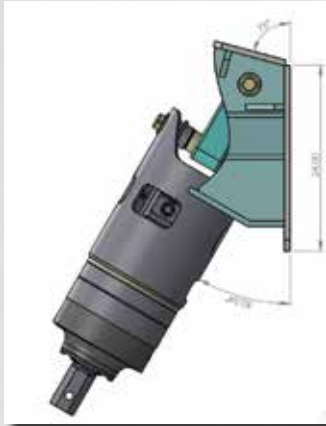


Link Arm: 77-78 Series

Link Arm: 75 Series



## TUFF LINK 6.5K - 115K



The Tuff Link for skidsteers and excavators allows for dynamic versatility for your Eskridge Drive Head to be cradled in either direction.



## JIB MOUNT 6.5K - 375K



The Jib Mount for excavators provides maximum ground clearance and increased height capability.



Link Arm: D600, 1000, 1400 Series



Link Arm: DH150, 250, 375 Series

## Medium Duty Bolt-on Dirt Auger

Utility Dirt Auger with FH-205 Dirt Pilot

- 2", 2 1/2" and 2 5/8" hex hubs
- Overall length of 104" with 40" to 60" of 3/8" thick flighting
- From 9" to 48" diameter

*Loose and compacted soils, stiff clays and soft shales*



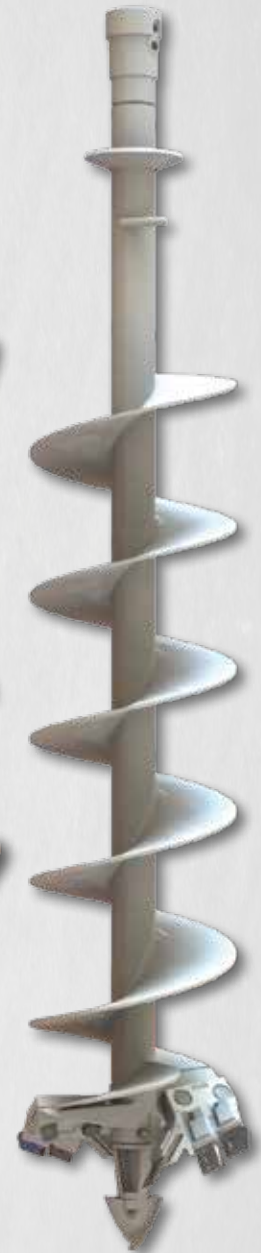
1652 Gauge Dirt Tooth



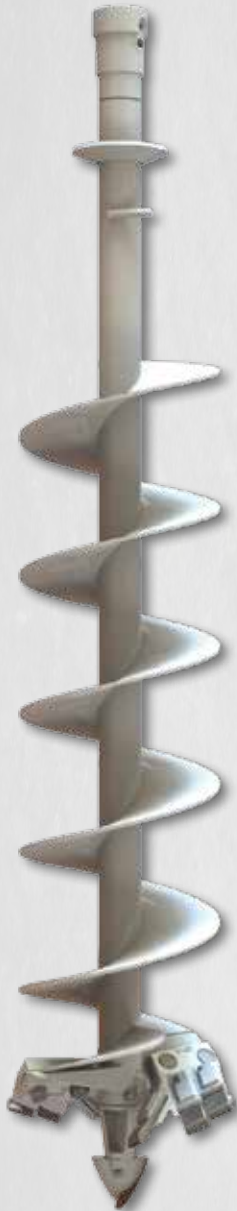
FH-205 Dirt Pilot



1650 Dirt Tooth







### Medium Duty Bolt-on Carbide Auger

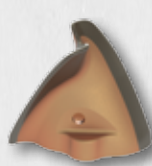
Utility Carbide Auger with FH-205HFTC Carbide Pilot

- 2", 2 1/2" and 2 5/8" hex hubs
- Overall length of 104" with 40" to 60" of 3/8" thick flighting
- From 9" to 48" diameter

*High abrasion, frozen soil, low impact*



1656 Carbide Tooth



FH-205 HFTC Carbide Pilot



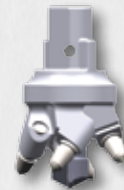
1650 Gauge Carbide Tooth



### Utility Bolt-on Bullet Auger with RCP-6.5 Rock Pilot

- 2", 2 1/2" and 2 5/8" hex hubs
- Overall length of 104" with 40" to 60" of 3/8" thick flighting
- RCP-6.5 Rock Pilot
- From 9" to 48" diameter

*Limestone, lava rock, medium sand stone and frozen materials, medium to hard formations*



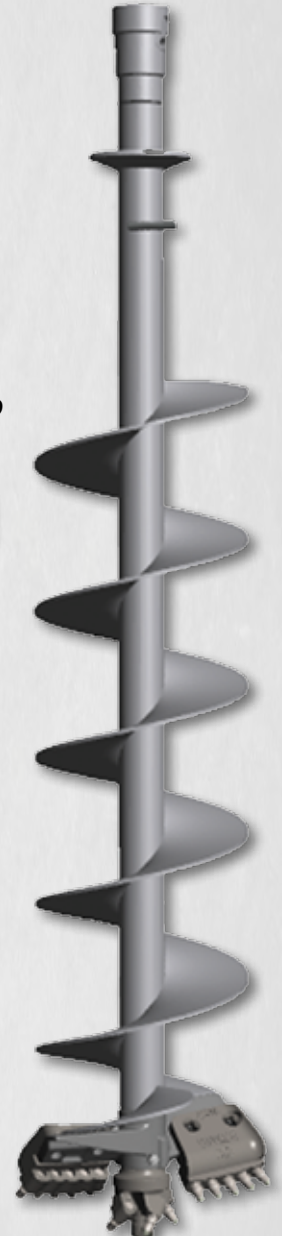
RCP-6.5 Pilot



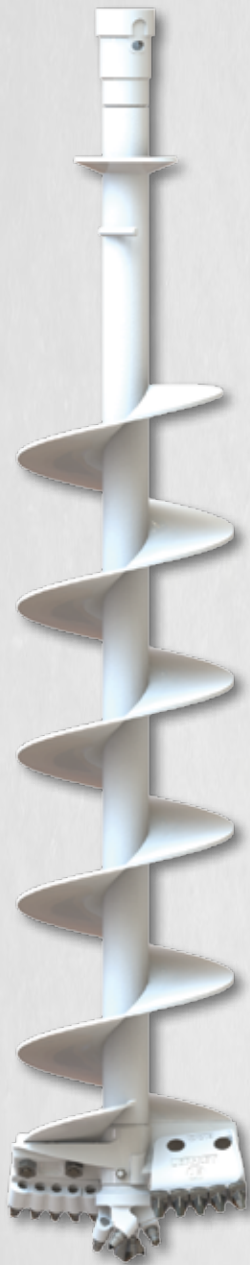
.875 Bullet Tooth



Bolt-On Bullet Shank Plate







### Medium Duty Bolt-on Dragon Tooth® Auger

Utility Bolt-On Dragon Tooth® with DCP -6.5 Rock Pilot

- 2", 2 1/2" and 2 5/8" hex hubs
- Overall length of 104" with 40" to 60" of 3/8" thick flighting
- RCP-6.5 Rock Pilot
- From 9" to 24" diameter

*Consumes limestone, lava rock, coral, medium sand stone and frozen materials, medium to hard formations*



Bolt-on Dragon Shank Plate



.875. Dragon Tooth (Dragon Tooth® is an original design of JMI.)



DCP-6.5 Pilot

### Adaptor Hubs and Holders



Hex Adaptors  
Hex Hub x Hex Stem



Hex Couplers  
(call for sizes)



Hex Hubs  
Sizes 2", 2 1/2",  
2 5/8", and 3"



810X



12X



145X



16X1



16X2



18X1



18X2



20X1



20X2



22X1



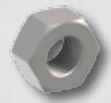
22X2



24X1



24X2



7/8" x 2 3/4" Long Plow Bolts  
and Nuts





• DIVISION OF SUPERIOR TRUCK EQUIPMENT •

***“Where Experience  
Meets Quality”***

*Representing these  
excellent brands:*



WWW.SUPERIORTRUCK.CA • 866.733.9776