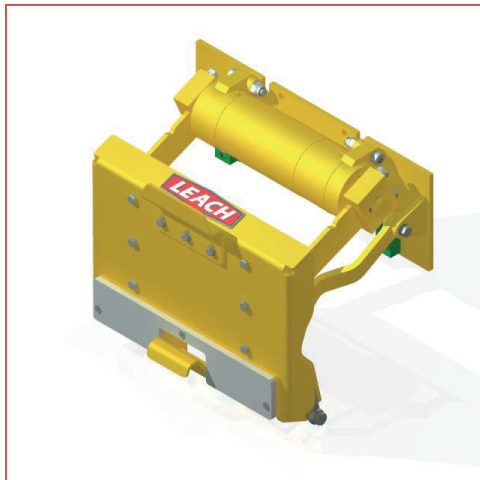
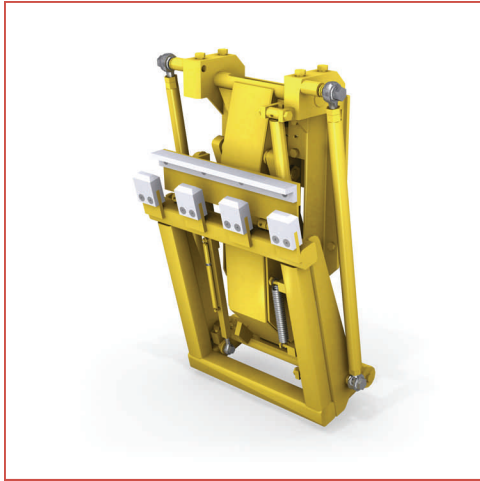




CART TIPPER



CONTAINER HANDLING SOLUTIONS
for
REAR LOADERS





LEACH ROTARY ACTUATED CART TIPPER TWO YEAR LIMITED WARRANTY

Each Leach Rotary Actuated Cart Tipper is warranted by the Labrie Environmental Group ("Company") against defects in material and workmanship for a period of two (2) years provided the Rotary Actuated Cart Tipper is used in a normal and reasonable manner. This limited warranty is applicable only to the original user-purchaser for a period of two (2) years (as measured from the date of delivery to the original user-purchaser) for the complete unit. This warranty is not transferable.

During the Limited Warranty Period the Company will cause to be repaired or replaced, as the Company may elect, any part or parts of such Rotary Actuated Cart Tipper that the Company's examination discloses to be defective in material or workmanship. This warranty is expressly limited to the repair or replacement of any component or part thereof of any Leach Rotary Actuated Cart Tipper that is proven to the Company's satisfaction to have been defective in material or workmanship. The Company is not responsible for labor and transportation charges in connection with the replacement or repair of defective parts.

The Leach Rotary Actuated Cart Tipper Limited Warranty shall not apply to:

1. Any components or trade accessories that have a separate warranty by the original manufacturer.
2. Normal adjustments and maintenance services.
3. Wear items used for anti-friction purposes.
4. Wear items used for sealing purposes.
5. Failures resulting from the Leach Rotary Actuated Cart Tipper being operated in a manner or for a purpose not recommended by the Company, including operation faster than published cycle times.
6. Repairs, modifications or alterations without the express written consent of the Company, which in the Company's sole judgment, have adversely affected the Leach Rotary Actuated Cart Tipper's operation or reliability as originally designed and manufactured.
7. Items subject to misuse, negligence, accident or maintenance not consistent with Company published guidelines.
8. External damage such as, but not limited to, bent/dented components, sand blasting damage, paint ingested through seals, contamination of fluid.

NOTE The use in the product of any part other than parts approved by the Company may invalidate this warranty. The Company reserves the right to determine, in its sole discretion, if the use of non-approved parts shall invalidate the warranty. Nothing contained in this warranty shall make the Company liable for loss, injury, or damage of any kind to any person or entity resulting from any defect or failure in the machine.

TO THE EXTENT LIMITED BY LAW, THIS WARRANTY IS IN LIEU OF ALL OTHER WARRANTIES, EXPRESS OR IMPLIED, INCLUDING WITHOUT LIMITATION, ANY IMPLIED WARRANTIES OF MERCHANTABILITY AND FITNESS FOR A PARTICULAR PURPOSE.

This warranty is also in lieu of all other obligations or liabilities on the part of the Company, including but not limited to, liability for incidental and consequential damages on the part of the Company or the seller. Labrie Environmental Group makes no representation that the machine has the capacity to perform any functions other than as contained in the Company's written literature, catalogs or specifications accompanying delivery of the Leach Rotary Actuated Cart Tipper. No person or affiliated company representative is authorized to alter the terms of this warranty, to give any other warranties or to assume any other liability on behalf of the Company in connection with the sale, servicing or repair of any machine manufactured by the Company.

Labrie Environmental Group reserves the right to make design changes or improvements in its products without imposing any obligation upon itself to change or improve previously manufactured products.

labriepius
3630 Stearns Drive
P.O. Box 2785
Oshkosh, WI 54903-2785



LEACH CYLINDER ACTUATED CART TIPPER ONE YEAR LIMITED WARRANTY

Each Leach Cylinder Actuated Cart Tipper is warranted by the Labrie Environmental Group ("Company") against defects in material and workmanship for a period of one (1) year provided the Cylinder Actuated Cart Tipper is used in a normal and reasonable manner. This limited warranty is applicable only to the original user-purchaser for a period of one (1) year (as measured from the date of delivery to the original user-purchaser) for the complete unit. This warranty is not transferable.

During the Limited Warranty Period the Company will cause to be repaired or replaced, as the Company may elect, any part or parts of such Cylinder Actuated Cart Tipper that the Company's examination discloses to be defective in material or workmanship. This warranty is expressly limited to the repair or replacement of any component or part thereof of any Leach Cylinder Actuated Cart Tipper that is proven to the Company's satisfaction to have been defective in material or workmanship. The Company is not responsible for labor and transportation charges in connection with the replacement or repair of defective parts.

The Leach Cylinder Actuated Cart Tipper Limited Warranty shall not apply to:

1. Any components or trade accessories that have a separate warranty by the original manufacturer.
2. Normal adjustments and maintenance services.
3. Wear items used for anti-friction purposes.
4. Wear items used for sealing purposes.
5. Failures resulting from the Leach Cylinder Actuated Cart Tipper being operated in a manner or for a purpose not recommended by the Company, including operation faster than published cycle times.
6. Repairs, modifications or alterations without the express written consent of the Company, which in the Company's sole judgment, have adversely affected the Leach Cylinder Actuated Cart Tipper's operation or reliability as originally designed and manufactured.
7. Items subject to misuse, negligence, accident or maintenance not consistent with Company published guidelines.
8. External damage such as, but not limited to, bent/dented components, sand blasting damage, paint ingested through seals, contamination of fluid.

NOTE The use in the product of any part other than parts approved by the Company may invalidate this warranty. The Company reserves the right to determine, in its sole discretion, if the use of non-approved parts shall invalidate the warranty. Nothing contained in this warranty shall make the Company liable for loss, injury, or damage of any kind to any person or entity resulting from any defect or failure in the machine.

TO THE EXTENT LIMITED BY LAW, THIS WARRANTY IS IN LIEU OF ALL OTHER WARRANTIES, EXPRESS OR IMPLIED, INCLUDING WITHOUT LIMITATION, ANY IMPLIED WARRANTIES OF MERCHANTABILITY AND FITNESS FOR A PARTICULAR PURPOSE.

This warranty is also in lieu of all other obligations or liabilities on the part of the Company, including but not limited to, liability for incidental and consequential damages on the part of the Company or the seller. Labrie Environmental Group makes no representation that the machine has the capacity to perform any functions other than as contained in the Company's written literature, catalogs or specifications accompanying delivery of the Leach Cylinder Actuated Cart Tipper. No person or affiliated company representative is authorized to alter the terms of this warranty, to give any other warranties or to assume any other liability on behalf of the Company in connection with the sale, servicing or repair of any machine manufactured by the Company.

Labrie Environmental Group reserves the right to make design changes or improvements in its products without imposing any obligation upon itself to change or improve previously manufactured products.

labriepius
3630 Stearns Drive
P.O. Box 2785
Oshkosh, WI 54903-2785



CART TIPPER FEATURES

MODEL	Actuator Type	Features
A-100 Series	Helac Rotary	<ul style="list-style-type: none"> • Under hopper, tuck away design • Long reach • Sweeping motion to pick up containers at varying heights • Available for North American, European or universal applications • Two year limited warranty
C-220 Series	Hydraulic Cylinder	<ul style="list-style-type: none"> • Under hopper, tuck away design • Long reach • Sweeping motion to pick up containers at varying heights • Available for North American, European or universal applications • One year limited warranty
F-220 Series	Hydraulic Cylinder	<ul style="list-style-type: none"> • Narrow depth, flat mount design • Compact motion cycle • Sweeping motion to pick up containers at varying heights • One year limited warranty
A-150 Series	Helac Rotary	<ul style="list-style-type: none"> • Hydraulic grabber arm design • Can pick up virtually all plastic carts and barrels • Arms fold away for hopper access • Models available with 90°, 180° grabber opening ranges • Two year limited warranty
RS-130 (WAVE)	Helac Rotary	<ul style="list-style-type: none"> • Tuck away design • Compact size provides clearance for kick bar container attachment • Sweeping motion to pick up containers at varying heights • For ANSI standard domestic (North American) plastic containers • Two year limited warranty
RC-130	Hydraulic Cylinder	<ul style="list-style-type: none"> • Narrow depth, flat mount design • Leach quality, economically priced • Simple hinged plate mechanism • One year limited warranty

All Leach Cart Tippers feature a high-visibility powder coated finish!



CART TIPPER CROSS-REFERENCE

LEACH MODEL	COMPARE TO BAYNE MODEL	COMPARE TO PERKINS MODEL
LAF-220	TL Series	D6235 D6070 D6071
LEF-220	ETL Series	**
LTF-220	CTL	D6250 D6275
R-110 R-120 RE-220 RT-220	ETL 208	D6245
R-130 RA-220	MBTL BTL208RHK	**
RS-130	BTL Series	D6080 D6220 D6400 D6405
RC-130	Taskmaster	D6500 Econolift
R-150 R-159	GRL Series	D6098 Series



CART TIPPERS

A-100 SERIES for REAR LOADERS

MODEL:	R-110, R-120, R-130
ANSI RATING:	ANSI Z 245.60-1996
APPLICATION:	REAR LOADERS
LIFT TYPE:	ROTARY ACTUATOR
HYDRAULIC FLOW:	2-3 GPM
HYDRAULIC PRESSURE:	1,800-2,100 PSI
CYCLE TIME:	8-10 SECONDS
MAXIMUM LOAD:	250 LBS
CART COMPATIBILITY:	TYPE B (DOMESTIC 2-BAR TYPE C (EUROPEAN COMB-STYLE)
NOTES:	TUCK-AWAY DESIGN



OPERATOR-FRIENDLY, PLUS EASIER SERVICE & MAINTENANCE!

- A powerful rotary actuator provides smooth & reliable operation under continuous use (up to 800 cycles per shift).
- Fewer moving parts provide safety and reliability.
- Bolt-on mounting plate for quick replacement.
- Sweeping action automatically adjusts to varying heights and uneven terrain with a positive lock on the container.
- Dumps higher and deeper into the hopper to minimize spillage and reduce the number of packer cycles.
- The compact design is perfect for dual tipper installations, and allows for unrestricted access to the hopper.
- Models available for either Type B Domestic (R-130) or Type C European (R-120) containers.
- Universal model (R-110) can pick up both Type B Domestic and Type C European containers.

LEACH Cart Tippers are exclusively available through the Labrie Environmental Group and their Authorized Distributors.

labrieplus

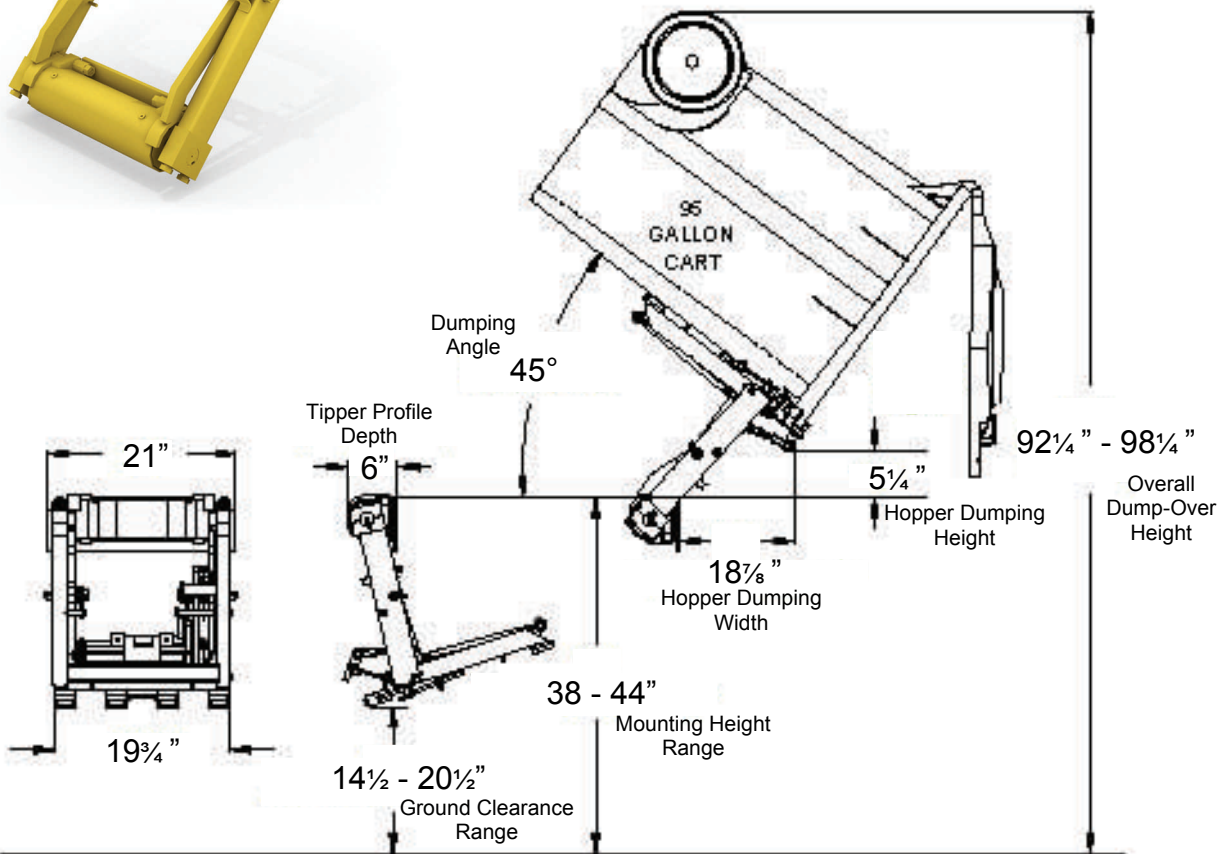
(800) 231-2771
www.labrieplus.com



CART TIPPERS

A-100 SERIES for REAR LOADERS

The A-100 Series Cart Tipper is designed to operate with fewer moving parts to deliver the highest level of safety and reliability. Ideal for compact installations, such as dual cart tippers, while providing clearance for commercial carts with unrestricted access to the hopper area for hand-loading.



Dimensions accommodate most ANSI Z245.60-1996 Type B carts (domestic style 2-bar) and most ANSI Z245.60-1996 Type C carts (European style), but may vary due to container specifications and/or applications. All dimensions are approximate.

For more information on LEACH Cart Tipper and what they can do to increase your bottom line, please contact your authorized Labrie Environmental Group Distributor or call us direct at LabriePlus!

LabriePlus is a proud subsidiary of



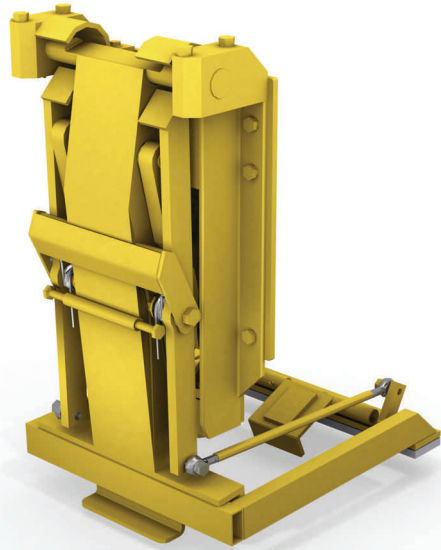
©2009 Labrie Environmental Group



CART TIPPERS

C-220 SERIES for REAR LOADERS

MODEL:	RA-220, RE-220, RT-220
ANSI RATING:	ANSI Z 245.60-1996
APPLICATION:	REAR LOADERS
LIFT TYPE:	HYDRAULIC CYLINDER
HYDRAULIC FLOW:	2-3 GPM
HYDRAULIC PRESSURE:	1,800-2,100 PSI
CYCLE TIME:	8-10 SECONDS
MAXIMUM LOAD:	400 LBS
CART COMPATIBILITY:	TYPE B (DOMESTIC 2-BAR) TYPE C (EUROPEAN COMB-STYLE)
NOTES:	TUCK-AWAY DESIGN



OPERATOR-FRIENDLY, PLUS EASIER SERVICE & MAINTENANCE!

- A powerful, easy to maintain trunnion-mounted hydraulic cylinder provides smooth & reliable operation under continuous use (up to 800 cycles per shift).
- Narrow depth for use with various commercial container handling systems.
- Bolt-on mounting plate for quick replacement.
- Sweeping action automatically adjusts to varying heights and uneven terrain with a positive lock on the container.
- Dumps higher and deeper into the hopper to minimize spillage and reduce the number of packer cycles.
- The compact design is perfect for dual tipper installations, and allows for unrestricted access to the hopper.
- Models available for either Type B Domestic (RA-220) or Type C European (RE-220) containers.
- Universal model (RT-220) can pick up both Type B Domestic and Type C European containers.
- Also available in double tipper configurations.

LEACH Cart Tipplers are exclusively available through the Labrie Environmental Group and their Authorized Distributors.

labrieplus

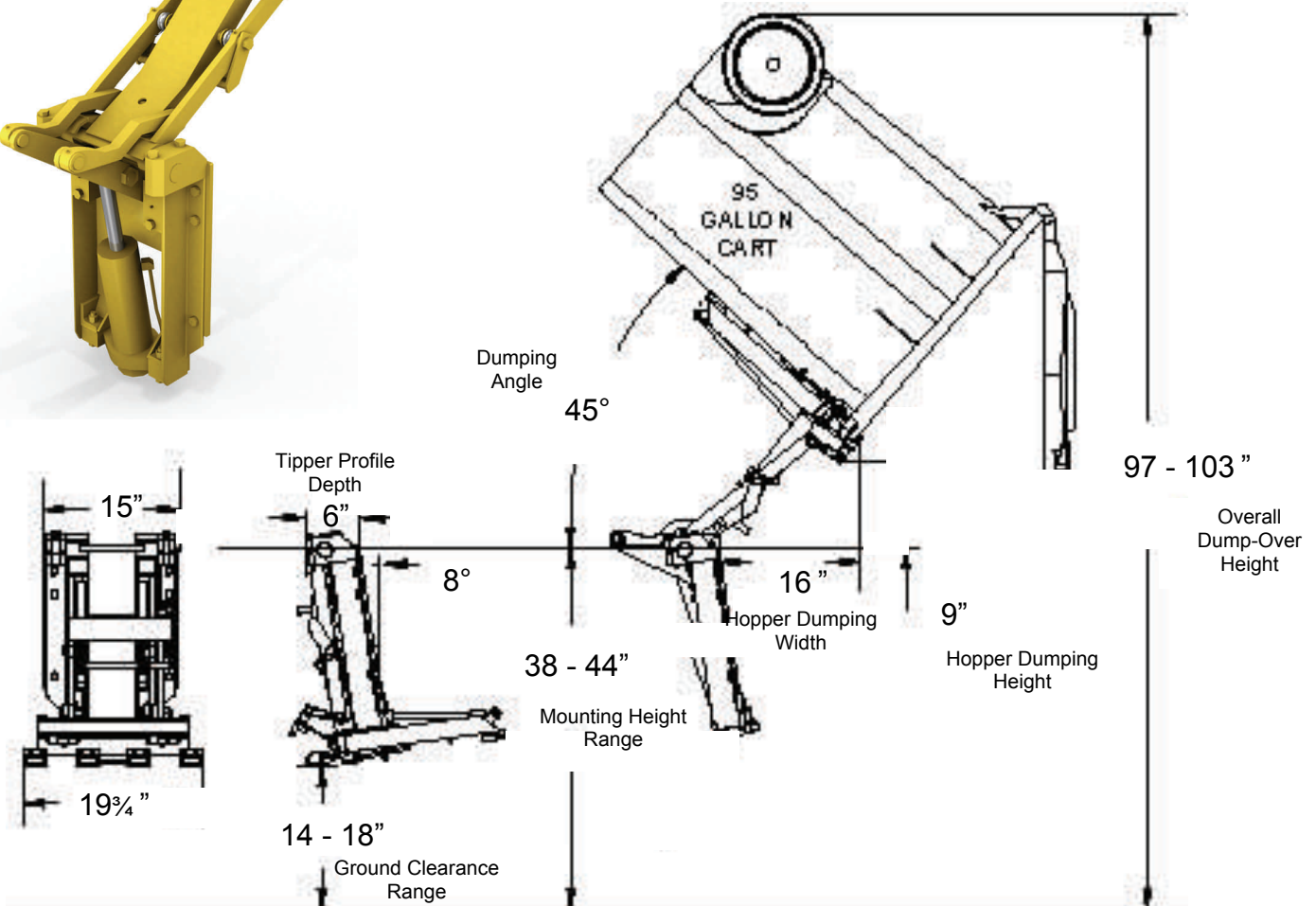
(800) 231-2771
www.labrieplus.com



CART TIPPERS

C-220 SERIES for REAR LOADERS

The C-220 Series Cart Tipper is designed to operate with fewer moving parts to deliver the highest level of safety and reliability. Ideal for compact installations, such as dual cart tippers, while providing clearance for commercial carts with unrestricted access to the hopper area for hand-loading.



Dimensions accommodate most ANSI Z245.60-1996 Type B carts (domestic style 2-bar) and most ANSI Z245.60-1996 Type C carts (European style), but may vary due to container specifications and/or applications. All dimensions are approximate.

For more information on LEACH Cart Tipper and what they can do to increase your bottom line, please contact your authorized Labrie Environmental Group Distributor or call us direct at LabriePlus!

LabriePlus is a proud subsidiary of



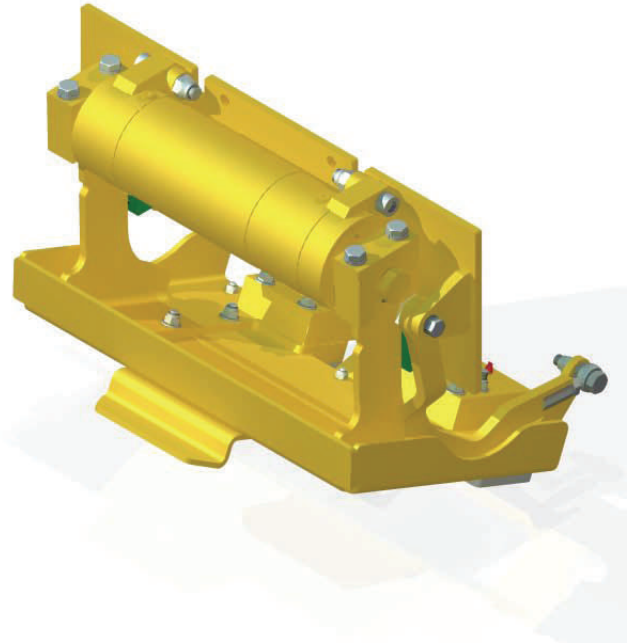
©2009 Labrie Environmental Group



CART TIPPERS

WAVE for REAR LOADERS

MODEL:	WAVE RS-130
ANSI RATING:	ANSI Z 245.60-1996
APPLICATION:	REAR LOADERS
LIFT TYPE:	ROTARY ACTUATOR
HYDRAULIC FLOW:	2-3 GPM
HYDRAULIC PRESSURE:	1,800-2,100 PSI
CYCLE TIME:	8-10 SECONDS
MAXIMUM LOAD:	450 LBS
CART COMPATIBILITY:	35—96 GALLON TYPE B (DOMESTIC 2-BAR)
NOTES:	TUCK-AWAY, COMPACT DESIGN



OPERATOR-FRIENDLY, PLUS EASIER SERVICE & MAINTENANCE!

- A powerful rotary actuator provides smooth & reliable operation under continuous use (up to 800 cycles per shift).
- Fewer moving parts provide safety and reliability.
- Bolt-on mounting plate for quick replacement.
- Sweeping action automatically adjusts to varying heights and uneven terrain with a positive lock on the container.
- Dumps higher and deeper into the hopper to minimize spillage and reduce the number of packer cycles.
- The compact design is perfect for dual tipper installations, and allows for unrestricted access to the hopper, while providing excellent ground clearance.
- Accommodates most Type B Domestic (R-130) containers.

LEACH Cart Tippers are exclusively available through the Labrie Environmental Group and their Authorized Distributors.

labrieplus

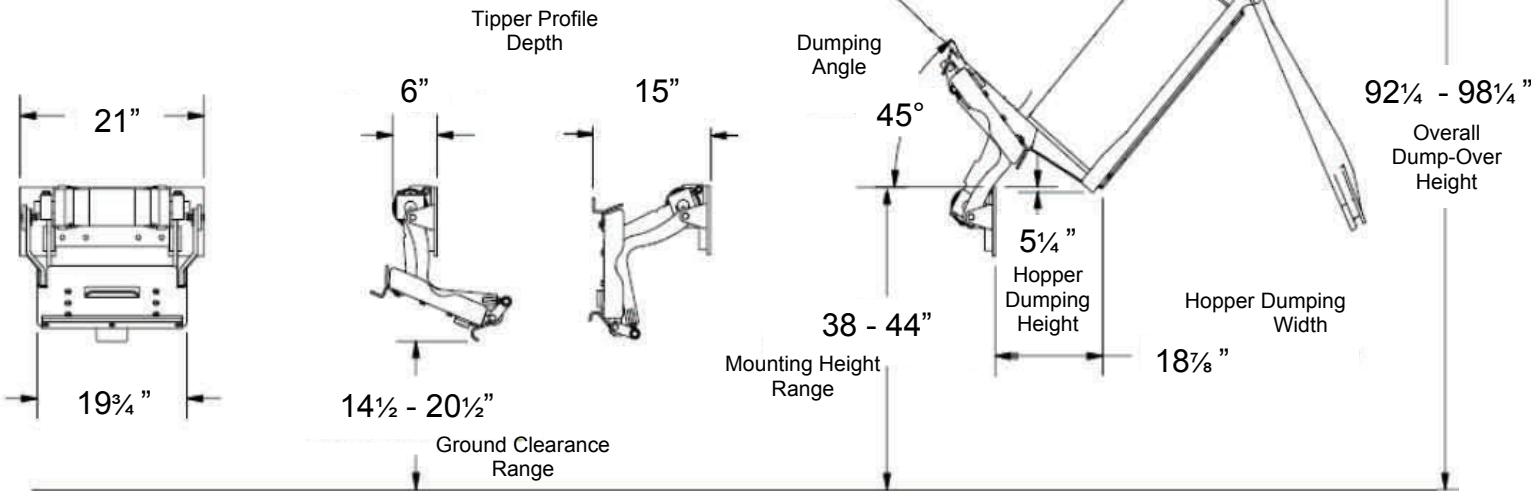
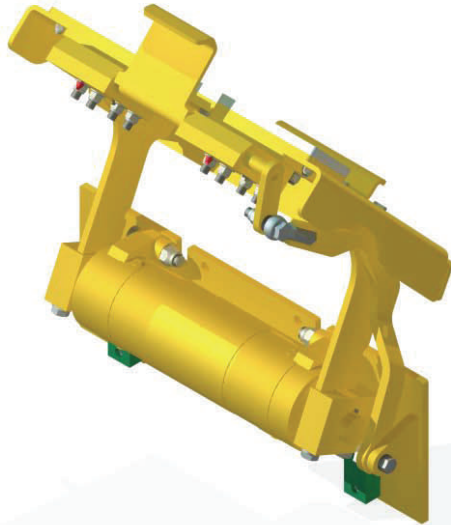
(800) 231-2771
www.labrieplus.com



CART TIPPERS

WAVE for REAR LOADERS

The Wave Series RS-130 Cart Tipper is designed to operate with fewer moving parts to deliver the highest level of safety and reliability. Ideal for compact installations, such as dual cart tippers, while providing clearance for commercial carts with unrestricted access to the hopper area for hand-loading.



Dimensions accommodate most ANSI Z245.60-1996 Type B carts (domestic style 2-bar) and most ANSI Z245.60-1996 Type C carts (European style), but may vary due to container specifications and/or applications. All dimensions are approximate.

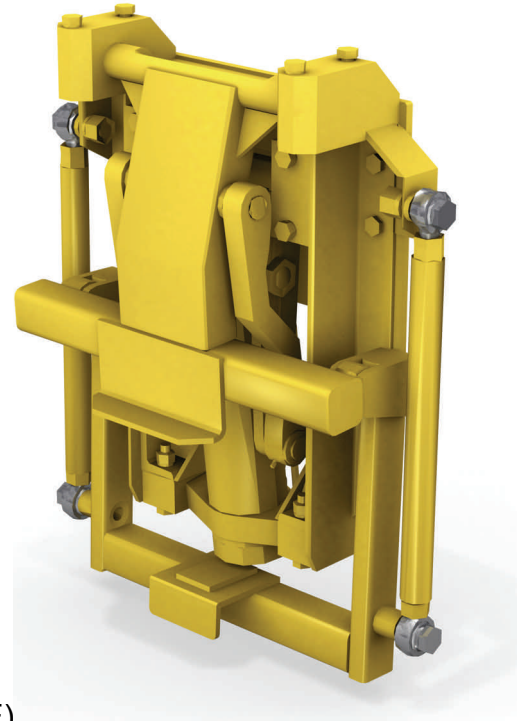
For more information on LEACH Cart Tippers and what they can do to increase your bottom line, please contact your authorized Labrie Environmental Group Distributor or call us direct at LabriePlus!



CART TIPPERS

F-220 SERIES for REAR LOADERS

MODEL:	LAF-220, LEF-220, LTF-220
ANSI RATING:	ANSI Z 245.60-1996
APPLICATION:	REAR LOADERS
LIFT TYPE:	HYDRAULIC CYLINDER
HYDRAULIC FLOW:	2-3 GPM
HYDRAULIC PRESSURE:	1,800-2,100 PSI
CYCLE TIME:	8-10 SECONDS
MAXIMUM LOAD:	650 LBS
CART COMPATIBILITY:	TYPE B (DOMESTIC 2-BAR) TYPE C (EUROPEAN COMB-STYLE)
NOTES:	COMPACT, SHORT-ARM DESIGN



OPERATOR-FRIENDLY, PLUS EASIER SERVICE & MAINTENANCE!

- A powerful, easy to maintain trunnion-mounted hydraulic cylinder provides smooth & reliable operation under continuous use (up to 800 cycles per shift).
- Heavy duty design with higher weight capacity.
- Narrow depth for use with various commercial container handling systems.
- Bolt-on mounting plate for quick replacement.
- Sweeping action automatically adjusts to varying heights and uneven terrain with a positive lock on the container.
- Short-arm design does not interfere with packer operation on rear loaders.
- The compact design is perfect for dual tipper installations, and allows for unrestricted access to the hopper.
- Models available for either Type B Domestic (LAF-220) or Type C European (LEF-220) containers.
- Universal model (LTF-220) can pick up both Type B Domestic and Type C European containers.

LEACH Cart Tipplers are exclusively available through the Labrie Environmental Group and their Authorized Distributors.

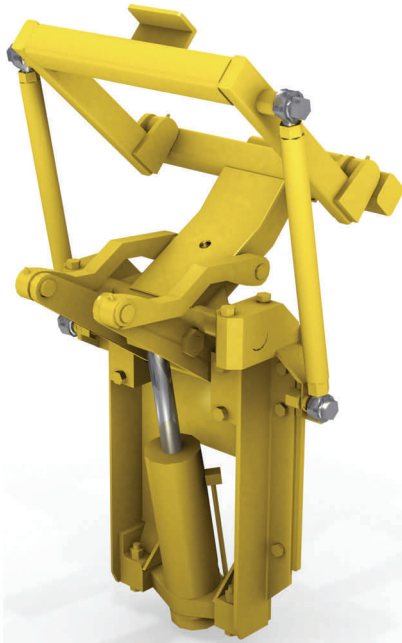
labrieplus

(800) 231-2771
www.labrieplus.com

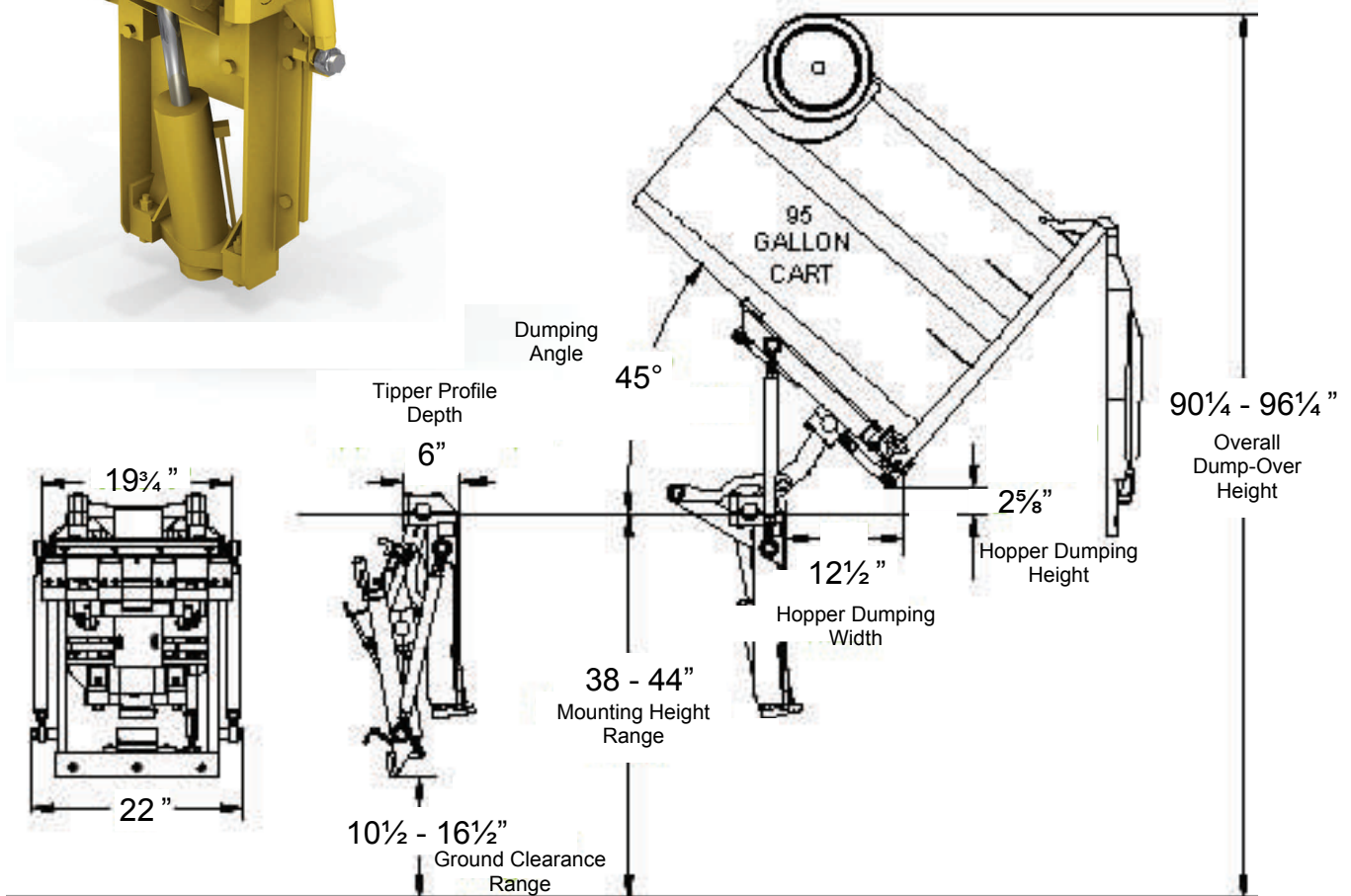


CART TIPPERS

F-220 SERIES for REAR LOADERS



The F-220 Series Cart Tippers are designed to operate with fewer moving parts to deliver the highest level of safety and reliability. Ideal for compact installations, such as dual cart tippers, while providing clearance for commercial carts with unrestricted access to the hopper area for hand-loading.



Dimensions accommodate most ANSI Z245.60-1996 Type B carts (domestic style 2-bar) and most ANSI Z245.60-1996 Type C carts (European style), but may vary due to container specifications and/or applications. All dimensions are approximate.

For more information on LEACH Cart Tippers and what they can do to increase your bottom line, please contact your authorized Labrie Environmental Group Distributor or call us direct at LabriePlus!

LabriePlus is a proud subsidiary of

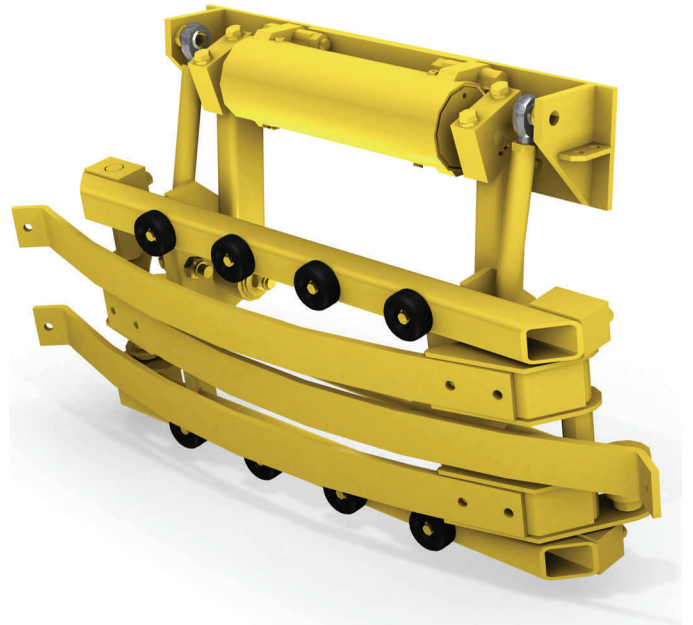


©2009 Labrie Environmental Group



CART TIPPERS

A-150 SERIES for REAR LOADERS



MODEL:	R-150, R-159
ANSI RATING:	ANSI Z 245.60-1996
APPLICATION:	REAR LOADERS
LIFT TYPE:	ROTARY ACTUATOR
HYDRAULIC FLOW:	2-3 GPM
HYDRAULIC PRESSURE:	1,800-2,100 PSI
CYCLE TIME:	8-10 SECONDS
MAXIMUM LOAD:	300 LBS
CART COMPATIBILITY:	ANY GRABBER COMPATIBLE
NOTES:	SPACE SAVING ARMS

OPERATOR-FRIENDLY, PLUS EASIER SERVICE & MAINTENANCE!

- A powerful rotary actuator provides smooth & reliable operation under continuous use (up to 800 cycles per shift).
- Universal application design can be mounted on virtually all rear, side and front loaders.
- Narrow depth for use with various commercial container handling systems.
- Bolt-on mounting plate for quick replacement.
- Unique three-gripper design is compatible with most two wheeled carts and drums.
- Even handles carts with damaged lifting apparatus, such as missing lifting bars, making it the most robust grabber-style cart tipper on the market.
- Space saving arms fold away hydraulically for total access to the hopper when not in use.
- Rubber straps on the arms and faceplate ensure a secure grip while protecting your carts.
- Does not interfere with the packer cycle, speeding the loading process.

LEACH Cart Tippers are exclusively available through the Labrie Environmental Group and their Authorized Distributors.

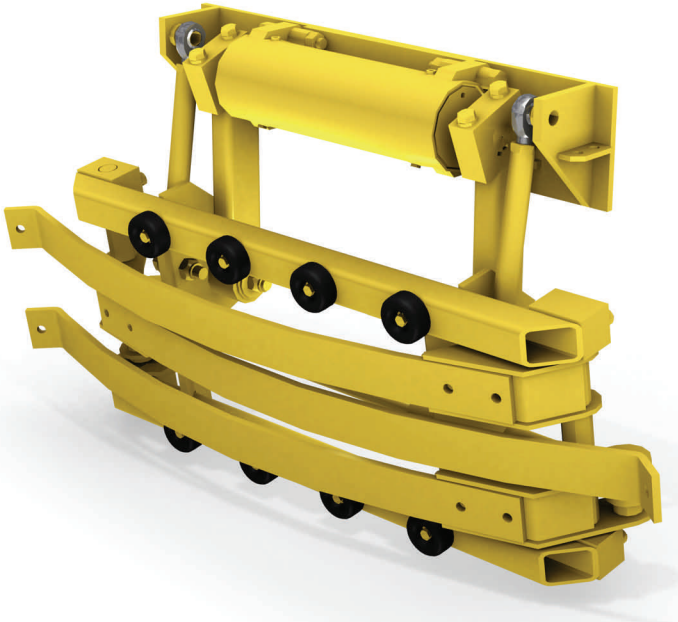
labrieplus

(800) 231-2771
www.labrieplus.com

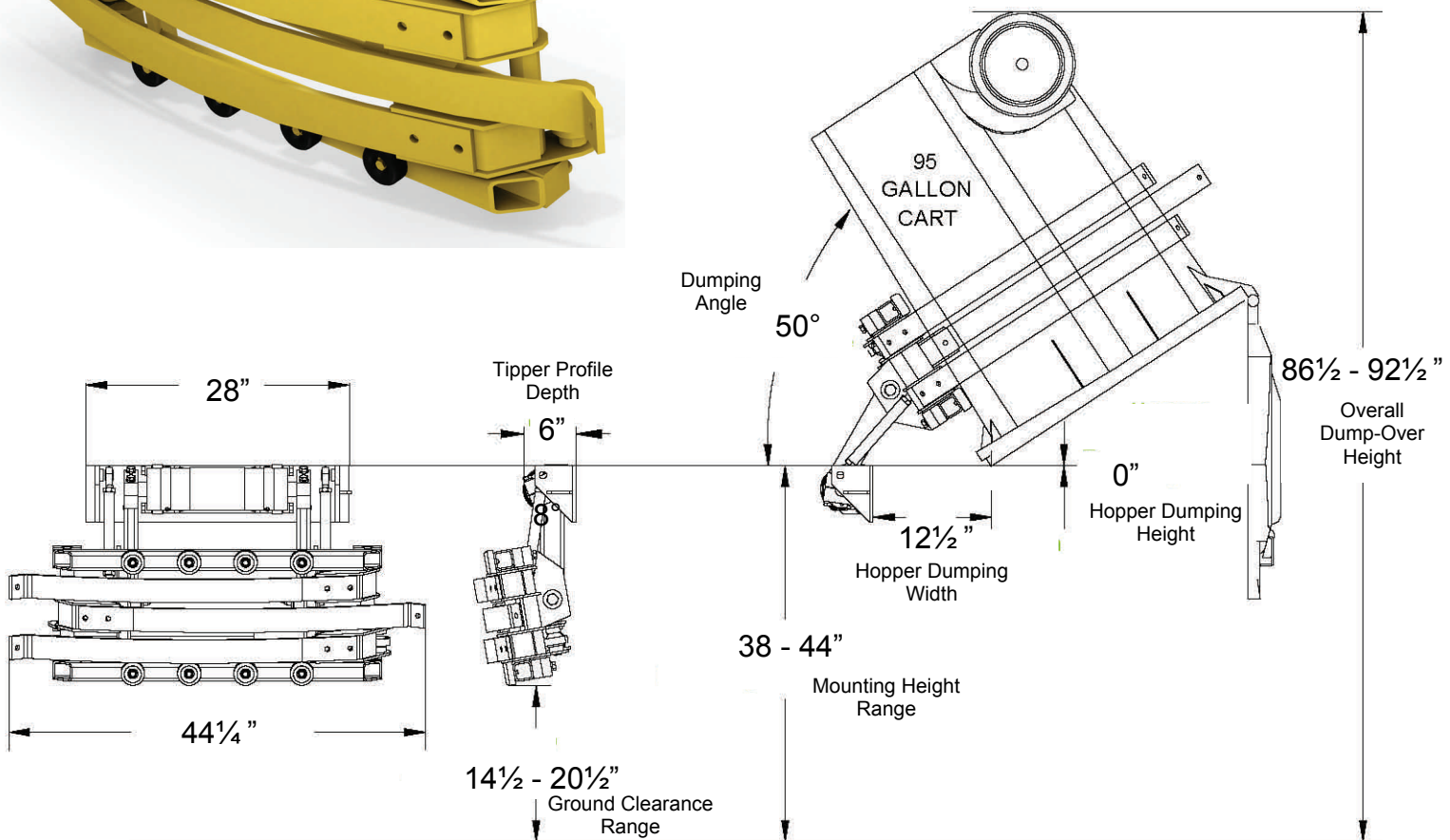


CART TIPPERS

A-150 SERIES for REAR LOADERS



The A-150 Series Cart Tippers are designed to operate with fewer moving parts to deliver the highest level of safety and reliability. Ideal for compact installations, providing clearance for commercial carts with unrestricted access to the hopper area for hand-loading.



Dimensions accommodate most ANSI Z245.60-1996 Type B carts (domestic style 2-bar) and most ANSI Z245.60-1996 Type C carts (European style), but may vary due to container specifications and/or applications. All dimensions are approximate.

For more information on LEACH Cart Tippers and what they can do to increase your bottom line, please contact your authorized Labrie Environmental Group Distributor or call us direct at LabriePlus!

LabriePlus is a proud subsidiary of



©2009 Labrie Environmental Group



CART TIPPERS

RC-130 for REAR LOADERS

MODEL:	RC-130
ANSI RATING:	ANSI Z 245.60-1996
APPLICATION:	REAR LOADERS
LIFT TYPE:	HYDRAULIC CYLINDER
HYDRAULIC FLOW:	2-3 GPM
HYDRAULIC PRESSURE:	1,800-2,100 PSI
CYCLE TIME:	8-10 SECONDS
MAXIMUM LOAD:	400 LBS
CART COMPATIBILITY:	TYPE B (DOMESTIC 2-BAR)
NOTES:	HINGED-PLATE DESIGN



OPERATOR-FRIENDLY, PLUS EASIER SERVICE & MAINTENANCE!

- A powerful, easy to maintain trunnion-mounted hydraulic cylinder provides smooth & reliable operation under continuous use (up to 800 cycles per shift).
- Narrow depth for use with various commercial container handling systems.
- Bolt-on mounting plate for quick replacement.
- Economical hinged-plate design.
- Fewer moving parts provide safety and reliability.
- The compact design is perfect for dual tipper installations, and allows for unrestricted access to the hopper.

LEACH Cart Tipper are exclusively available through the Labrie Environmental Group and their Authorized Distributors.

labrieplus

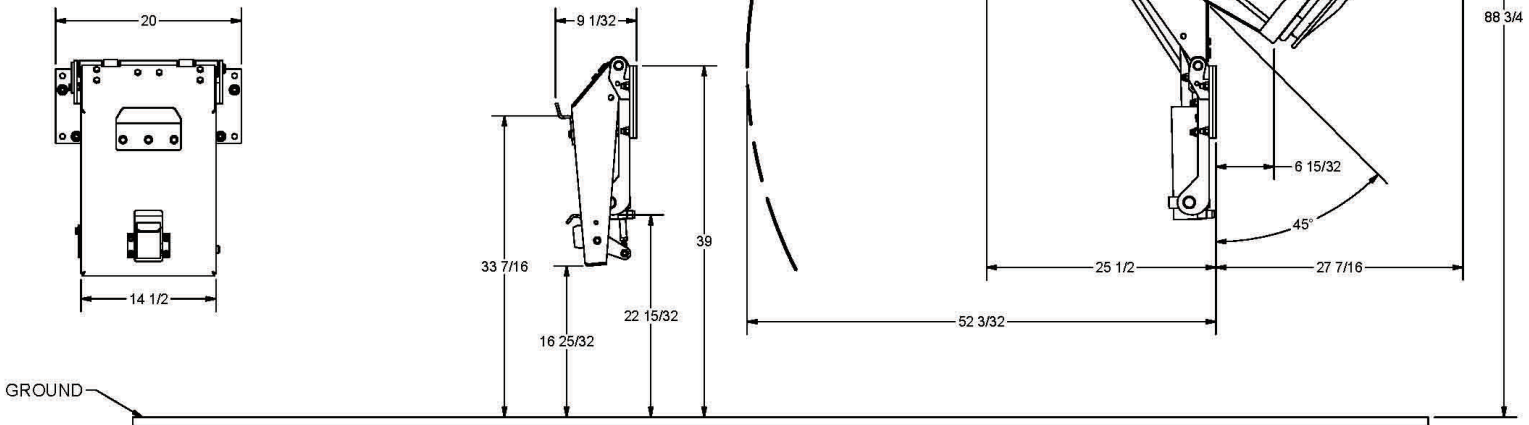
(800) 231-2771
www.labrieplus.com



CART TIPPERS

RC-130 for REAR LOADERS

The RC-130 Cart Tipper is designed to operate with fewer moving parts to deliver the highest level of safety and reliability. Ideal for compact installations, such as dual cart tippers, while providing clearance for commercial carts with unrestricted access to the hopper area for hand-loading.



Dimensions accommodate most ANSI Z245.60-1996 Type B carts (domestic style 2-bar), but may vary due to container specifications and/or applications. All dimensions are approximate.

For more information on LEACH Cart Tippers and what they can do to increase your bottom line, please contact your authorized Labrie Environmental Group Distributor or call us direct at LabriePlus!

LabriePlus is a proud subsidiary of



©2009 Labrie Environmental Group

**FOR MORE INFORMATION OR TO
ORDER LEACH CART TIPPER
PRODUCTS, PLEASE CONTACT:**

labrie *plus*

**3630 Stearns Drive
P.O. Box 2785
Oshkosh, WI 54903-2785
(800) 231-2771
www.labrieplus.com**

LabriePlus is a proud subsidiary of

 **labrie**
environmental group

labrie *plus*

 **Juggler™**

 **LEACH**

 **LABRIE**

WITKE

INDUSTRIAL
LIFTERS®