



## Voyager™ HD Mainline Inspection System

Capture clear, detailed video of pipes relined 6" to 48" and larger with our innovative Voyager™ HD Mainline Inspection System. It combines a rugged tractor, innovative high-definition 1080p WiperCam® camera, and an advanced CANbus controller.

### Detailed HD Video Capture

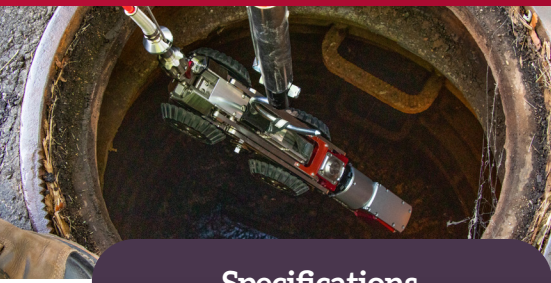
- Pan and tilt 1080p HD video camera captures every detail
- 120x zoom capability for rapid pipe assessment
- Built-in lens wiper technology maximizes time in the pipe
- Dual camera lasers for accurate crack measurement (optional)

### Responsive & Powerful

- Compact tractor with all-wheel drive to navigate tough terrain
- Rear-viewing HD camera to monitor retrieval
- Multiple wheel configurations and integral camera lift to match pipe conditions and sizes
- Auto-drive to waypoints and auto-retrieve for maximum efficiency

### Easy & Efficient Operation

- Digital CANbus controller delivers instantaneous crawler and camera response
- Fingertip controls for outstanding operator ergonomics
- Handheld pendant for system control at the manhole
- 1200' cable reduces truck setup time



## Specifications

# Voyager™ HD Mainline Inspection System

## Advanced Mainline Assessment Technology

The Voyager HD is powerful, innovative and designed to complete mainline inspections with unmatched accuracy and efficiency. The Voyager is designed and built at Aries Industries' U.S. plant. Easy to use and maintain, the Voyager delivers unmatched video quality.

### Overall System Specifications:

- Includes: Controller, Crawler, Camera, Reel

### Desktop Controller

- Digital CANbus controls for instantaneous crawler & camera response
- Ergonomic controller with keyboard and dual joysticks
- Responds to multiple controls simultaneously
- Graphical crawler roll-angle display
- Rollover risk alerts
- Loss of seal integrity alerts with proactive internal pressure, temperature & humidity monitoring
- Crawler speed display
- Control tractor, reel & camera at the manhole with handheld pendant

### Crawler

- Crawler fits pipes relined 6"-48" and larger
- Standard motorized camera lift with internal gearing
- Autonomous time-saving functions such as auto-drive to waypoints & auto-retrieve
- Tool-less camera attach/detach with rugged connector
- Tool-less cable attach/detach
- Tough, reflective Kevlar lift strap with deployment loop
- HD backup camera

### Camera

- Pan & tilt, 120x zoom HD camera captures and transmits excellent quality, HD video (1080p x 1920p)
- In-the-pipe Aries WiperCam lens cleaning system with field-replaceable wipers
- Optional dual camera lasers for accurate crack measurement
- Front camera bumpers

### Cable Reel

- Truck-mounted reel with 1200' of 6-conductor cable
- 1200-pound pull strength
- Simple 6-wire reel termination
- Cable management with electronic clutch responsive to crawler movement
- Street-accessible reel controls with emergency stop button
- Quick one-button downrigger deployment
- Level wind with footage counter
- Spring-loaded retractable cable rollers for easy cable removal
- Field serviceable slipping
- Removeable drip pan
- Precisely adjustable drum tension control with caliper & floating rotor design

**DESIGNED & BUILT**  
BY ARIES INDUSTRIES

## ARIES

### Corporate Office

550 Elizabeth Street  
Waukesha, WI 53186  
Toll Free: 800-234-7205  
Phone: 262-896-7205  
Fax: 262-896-7099

### Western Regional

5748 E. Shields Avenue,  
Suite 101  
Fresno, CA 93727  
Toll Free: 800-671-0383  
Phone: 559-291-0383  
Fax: 559-291-0463

### Southern Regional

Atlanta, GA  
Toll Free: 800-234-7205  
Fax: 262-896-7099

raising the bar

## UNDERGROUND

### Aries Canada Ltd.

95 Whitmore Road, Unit 1  
Vaughan, Ontario  
Canada, L4L 6E2  
Toll Free: 877-730-7010  
Phone: 905-265-2279  
Fax: 905-265-2299

Sourcewell

Awarded Contract

Contract # 120721-ARS

raising the bar

# UNDERGROUND

VIDEO INSPECTION SOLUTIONS



MOBILE PATHFINDER SYSTEM

**ARIES**  
INDUSTRIES, INC.



Aries Mobile Pathfinder System delivers the power of a fully-equipped inspection truck in a portable, easy-to-use system.





## Mobile Pathfinder System

**The Mobile Pathfinder System is a lightweight, portable system for accurately inspecting mainlines 6" or larger. It combines a powerful transporter, innovative camera, and lightweight reel, operated by our all-in-one remote control.**

### Pathfinder Series Transporter

- Choose from three Pathfinder Series transporters to match pipe size
- Multiple wheel configurations to adapt to pipe conditions
- Rear-facing camera to monitor retrieval
- Camera lift for full view of the pipe

### WiperCam Pan & Tilt Camera

- 270° unobstructed viewing angle to view with-the-flow laterals and tractor wheels
- 360° camera head rotation for a full view of the pipe
- 120x zoom and high intensity LED lighting to capture pipe details
- Self-cleaning lens system and field replaceable wipers to maximize time in the pipe

### Reel

- Portable, lightweight reel to access hard-to-reach areas
- 1000' of low-friction, multi-conductor cable extends your reach

### All-In-One Remote Control

- Easy-to-use controller operates tractor, reel, and camera
- Hand-held or mounted on a desktop
- Includes monitor, internal digital video recorder and integrated overlay

# raising the bar

# UNDERGROUND

## Pathfinder Series Transporters

**Easily navigate harsh pipe conditions.**

The Mobile Pathfinder System includes a steerable, self-propelled tractor from our Pathfinder Series. Our range of models, Large Line Kits and wheel sizes ensure you get the right tractor for any combination of distance, condition, and pipe size.

### Models TR3300 / TR3320 / TR3400

#### All Models

- Works with Aries WiperCam Pan & Tilt camera
- Operates on Mobile Pathfinder PR3400 Reel
- Rear tip-up cable connection with secure twist-lock mechanism
- Rear-viewing camera with LED lighting
- Available auxiliary high power detachable light head (optional)
- Single fastener mounting for fast tire size changes
- Six-wheel, steerable drive system to match pipe contours
- Continuous duty drive motors
- Operates in power forward, power reverse, steer-left, steer-right, and free wheel modes
- 512Hz sonde/locating beacon

#### Pathfinder Model TR3300

- Operates in 6"-24" relined mainlines
- All gear-driven drive train powered by two independent, brushless motors
- Waterproof gel-filled circuit board cavity
- Manual camera-lift

#### Pathfinder Model TR3320

- Operates in 6"-24" mainlines
- Large Line Kit for operation in pipes up to 36" and larger (optional)

- Electric 7.1" camera lift
- On-screen diagnostics monitor transporter conditions
- Sealed and pressurized motor and electronics compartments

#### Pathfinder XL Model TR3400

- Operates in 8"-30" mainlines
- Large Line Kit for operation in pipes up to 60" (optional)
- Electric camera lift
- On-screen diagnostics monitor transporter conditions
- Sealed and pressurized motor and electronics compartments



# ROUND

## WiperCam Pan & Tilt Camera

Capture highly-detailed images.

Inspections using the Mobile Pathfinder System are completed quickly and accurately because of our WiperCam Pan & Tilt zoom camera. Our innovative mainline zoom camera is equipped with a self-cleaning lens system and field replaceable wipers for more time in the pipe.

### Application

- For mainline pipes 6" diameter relined and up
- Adaptable to almost any multi-conductor CCTV system
- Compatible with all Aries tractors

### Lens

- Self-cleaning lens system with field-replaceable wipers
- 120:1 zoom capability, 10x-optical, 12x-digital



WIPERCAM  
PAN & TILT



### Pan & Tilt Viewing

- Continuous 360° camera head rotation
- 270° unobstructed viewing angle
- Resolution of 720 (H) lines
- Spherical viewing capabilities in excess of 90%
- PE3430 horizontal pan to home / PE3530 vertical tilt to home options

### Lights

- Ultra-low light sensitive .05 lux
- Automatic exposure compensation
- Natural white LED lighting
- "Starlight" light enhancement feature
- Automatic iris compensation

### Diagnostics

- Internally pressurized with on-screen monitoring
- On-screen diagnostics continually monitor internal camera conditions

### Construction

- Shock resistant
- Break-resistant, scratch-proof sapphire camera window
- Operates on up to 2,000' of multi-conductor cable
- Optional crosshair generating lasers for crack measurement

Call 800-234-7205 for more information on Aries Mobile Pathfinder System.



# **ARIES**

INDUSTRIES, INC.

#### **CORPORATE OFFICE**

550 Elizabeth Street  
Waukesha, WI 53186  
Toll Free: 800-234-7205  
Phone: 262-896-7205  
Fax: 262-896-7099  
sales@ariesindustries.com

#### **WESTERN REGIONAL**

5748 E. Shields Avenue,  
Suite 101  
Fresno, CA 93727  
Toll Free: 800-671-0383  
Phone: 559-291-0383  
Fax: 559-291-0463

#### **SOUTHERN REGIONAL**

561 Thornton Road, Suite D  
Lithia Springs, GA 30122  
Toll Free: 800-327-4346  
Phone: 770-941-1144  
Fax: 770-941-1141

#### **ARIES CANADA LTD.**

95 Whitmore Road, Unit 1  
Vaughan, Ontario  
Canada, L4L 6E2  
Toll Free: 877-730-7010  
Phone: 905-265-2279  
Fax: 905-265-2299

Distributed by:



7530 114 Ave Se, Calgary, Alberta, Canada, T2C-4T3  
Toll Free: 1--866-733-9776 | Telephone: 403-263-9776  
sales@superiorna.ca | www.superiorna.ca

