



PV TIMES

Volume 26 Issue 11 Published Twice Each Month June 12, 2020
Serving • Collbran • Mesa • Molina • Plateau City • Powderhorn • Vega

New store brings life to an old building in Mesa Mesa Bloom Market: Turning a dream into a reality

PV Times had the opportunity to meet up with the new owners of Mesa Bloom Market in Mesa, CO. Here's what they had to say.

Tell us a little about yourselves, the store, and what you offer.

Our names are Steve Grisier of Grand Junction and Ty Shields of Mesa and we own Mesa Bloom Market on Hwy 65 in Mesa. The name reflects what we are looking to offer and the potential we see in this area, our location, and the value of local food and small businesses / communities coming together to support one another. We aim to offer the community and the traffic passing through a fun place to stop by for a collection of great local food, drinks, gifts, and to see a sampling of the amazing products the Plateau Valley and our surrounding areas have to offer.

From where does your inventory come?

The majority of our products come from right here in the Plateau Valley or down in the Grand Valley and surrounding areas. We are working with over 40 local vendors ranging from established businesses to those just getting started. Our Milk and cheese comes from Rocking W Cheese, the last surviving dairy on the Western slope, and eggs from Olathe. All of our meat comes from right up here: Rancho Molina (beef, pork, lamb), Grand Mesa Bison, as well as our own little lambing operation less than a mile away. Local elk, goat and poultry is coming soon. We have honey from a number of local bee keepers, in-

cluding our own. Greens and root-ed veggies come fresh from Back Porch Produce near Powderhorn and as more produce comes into season, we are working with a



number of fruit and vegetable growers in Palisade, Cedaredge and the surrounding areas. Our spice and tea blends are from Mountain Valley Seasonings, located in Grand Junction. Coffee is roasted weekly by Legacy Coffee in GJ. Bread and Granola come from

Slice of Life in Palisade. Tortillas and chips are from La Milpas in GJ. Pickles, salsas, sauces, and jams are from Palisade (Anita's pantry, Pear Blossom farms, Alidas, and others). Our ice cream, which seems to be a big hit,

Continued pg 9

Inside this issue:

Poetry, Fire Update, FFA	2
Growing Things	3
Welcome Home & Lookin' Back	4-5
Beef Industry Update	6
PV Update & Mesa Bloom Cont	8-9
Games & Puzzles	10
Obituary & PVHPS	11
Classifieds & Town of Collbran	12-13



Friends, Ty and Steve, have set off on a new adventure focused on providing locally-sourced goods to the Plateau Valley. Their front porch is the perfect place to grab a cup of coffee, fresh brewed iced tea, or kombucha, enjoy Enstrom's ice cream, and take in the view.

THE COUNTY FAIR

*Potbellied Pete and Luley Belle decided on a trip.
They didn't go aboard a plane or on a sailing ship.
They simply hitched their surrey up
behind their old bay mare
and headed out quite early to attend the County Fair.*

*Luley wore her bonnet so she would be well dressed,
and Pete fluffed out his whiskers
so he would look his best.
They met their friends and neighbors;
filled up on cotton candy,
viewed the 4-H livestock,
all brushed and looking dandy.*

*A quilt show, there was on display;
blue ribbons on the winner.
Many projects were admired before the time for dinner.
Smoked turkey legs, Pete's favorite,
were listed on the menu.
Together they picked out dessert,
and checked out every venue.*

*They saw some dancing ponies,
and rode the Carrousel,
while Pete admired the beauty
of his darling Luley Belle.
A county fair is always fun,
on that they did agree,
and each enjoyed this special treat
like going on a spree.*

*The setting sun soon signaled that it was time to go
and they held to the fondness of each and every show.
They thanked the Lord for blessing them
with time that they could share,
and treasured up the memories
made at the County Fair.*

©2020 Nona Kelley Carver

What Is This?

Can you guess the item or place
in the picture?



Fire Update

Fire Season is underway. There are currently no fire restrictions as of Tuesday, June 9. There was a fire ban the previous week. Weekend rains helped.

Current Wildfires in Western Colorado

Sieber Fire: Started: June 6 Active
1,094 acres

13.8 miles SW of Fruita, CO in McInnis
Canyons National Conservation Area
Moderate danger of growing
Cause: Lightning

Hunter Fire: Started June 5 Contained
731 acres

Located 12 miles north of Grand Junction in
the Little Book Cliffs
Moderate danger of growing
Cause: Lightning

Little Book Cliff Fire: Started June 6 Active
170 acres

6.8 miles N of Clifton
Moderate danger of growing
Cause: Lightening

Source: Fire Weather & Avalanche Center

Information as of June 9.



Thank You Plateau Valley FFA
for once again sharing your skills
and time to make our Main Street
in Collbran beautiful.

*State FFA Treasurer and PV
Alumn Brandon Melnikoff, Sopho-
more Marshal Himes, and Senior
John Nichols love having their
picture taken.*

*Hunter and Lenae White, Kayla
Shepardson, and Kyanna Himes
have fun planting.*

Growing Things

Submitted By: Annie Hughes

Bean Teepees

Bean teepees provide support for pole beans. The area inside the teepee can be used to grow lettuce or as a place space for kids to hang out. The tops of the teepees provide a perch for birds.

Pole Beans

Pole beans have long, curvy stems (some grow up to 12 feet) and, require support like a trellis or a teepee. I've read that pole beans are more productive than bush beans and that they also have superior flavor. Here are some pole bean varieties:

What You'll Need

- For the poles:
 - ◊ Five juniper limbs (about 3 inches in diameter, 10 feet long, and as straight as you can get them) sharpened at the bottom so that they can be easily pushed into the ground
 - Or-
 - ◊ 9 bamboo poles.
- Lightweight rope to lash the poles together at the top of the teepee, about six feet.
- String to run around and between the poles, about 48 feet.
- 7 bean seeds for each pole. You'll actually plant only five seeds per pole, but you may need extra in case some don't germinate.
- Inoculant for the beans. Here's a brand I recommend: <https://www.fedcoseeds.com/ogs/guard-n-garden-combination-inoculant-8155>.

Setting Up the Teepee



Here are very good instructions for making a 9 bamboo pole teepee with a space for kids inside: https://www.youtube.com/watch?v=PFZrHlbqs_p8&t=719s. Alternatively, you

can set up your teepee on a prepared garden bed and plant lettuce inside. The teepee will keep the lettuce nice and cool during summer heat so it's less likely to bolt. If

Variety	Description	Days to Maturity
Seychelles Pole Bean	Open-pollinated, produces uniform 5-6 inch long stringless, round-podded, very dark green, fresh beans. Lush, healthy foliage. Climbing 7-9 ft, vines set steadily as they grow with multiple beans ripening simultaneously. Texture is crisp with light beaniness when raw. Meaty and mild when cooked and green pods don't fade. Seeds are slow to develop in pods.	55
Scarlet Runner Beans	Open-pollinated, pole beans often grown as ornamentals for their brilliant scarlet blossoms that attract hummingbirds. Will grow to 10-12 feet. Can be eaten either as a snap (70 days) or shell (95 days) beans. Gorgeous purple and black mottled seeds.	70 (snap beans) 95 (shell beans)
Red Noodle Yard Long Beans	Open-pollinated. Slow to produce, loves heat and moisture. Keep it picked to sustain production. An intriguing Asian specialty whose strong unique indescribable flavor is brought out best by dry-frying in a hot wok with peanut oil, garlic and tamari. Stringless and most tender when young and thin.	90

you're using the 5 juniper limbs, just lash and set up the first three poles as shown in the video, then place and lash the remaining two poles. Push the pointy ends of the poles into the soil.

Planting the Beans

1. Apply the inoculant to the seeds per the instructions on the inoculant packaging.
2. If using, scatter lettuce seeds on the ground inside the teepee and rake lightly.
3. Poke five holes 1 inch deep around each pole, put in a seed, cover with dirt, and pat down.
4. Water planted seeds (both bean and lettuce if using) several times a day, keeping ground moist until seeds sprout. Then, water once or twice a day, depending on the weather. Do be patient. Beans can take a while to sprout. If some beans sprout, give the others a few days to follow suit. If the others don't sprout then inoculate extra beans and plant.
5. As stems develop, wrap them gently around the poles.

You can plant nasturtiums out

around the entire teepee if you like. They are pretty and the flowers and leaves are edible.

Beans and members of the onion family do not get along; so don't plant any chives, onions, garlic, garlic chives, lilies, or bulbs of any kind near the bean teepee.

Pole beans are very frost sensitive. If you expect a freeze, you can wrap the teepee up with floating row cover the night before the freeze. Be sure to remove the floating row cover when the weather warms. Here's a link to some row cover:

<https://www.fedcoseeds.com/ogs/covertan-pro-19-floating-row-cover-8876>.

Enjoy your bean teepee!

How to Contact Me

If you have questions, comments, constructive criticisms, or requests for subjects for future articles, please feel free to email those to me at info@redwingranchco.com.

*Copyright 2020 by Ann Hughes.
All Rights Reserved.*

Welcome Home!

Submitted by: Nona Kelley Carver

Plateau Valley residents Dan and Carole Fisher planned a dream vacation, unaware it would turn into what seemed like an endless nightmare. They booked a cruise through Princess Cruise Lines, flying from Grand Jct., CO to Singapore, where they boarded The Diamond Princess on January 4, 2020. They enjoyed several ports of call, a tour of Asian countries, and other interesting places before it became apparent that many of their group had contracted the Corona virus. Dan became very sick, and a Dr. tested both him and Carole. Both tested positive, even though Carole showed no symptoms. Everyone on the ship was quarantined in their cabins. Food was brought to their doors as no one was allowed in the halls except employees who enforced the lockdown. When the ship docked in Yokohama, Japan, both Dan and Carole were taken by ambulance to The National Center for Global Health in Tokyo.

Carole remained there for fourteen days, tested negative and was moved to the Rihga Royal Hotel about one and a half miles from the hospital. Dan was having such difficulty breathing that he was taken to ICU and immediately placed on a ventilator and connected to a heart/lung machine. Carole was not allowed to even see him until she pleaded with hospital authorities. She was wrapped in a haz-mat suit, masked and gloved with a covering over her hair, and taken through about six locked doors from the back of the hospital. When she saw Dan, fear gripped her soul. He was heavily sedated, in a mass of tubes and life support equipment, and completely unaware she was there. The doctors told her he might have 48 hours to live.

Back here, we received that message by email, and Pastor Kyle VanArsdol of Molina Baptist Church sent out a plea for all who were willing to pray to fill in a chart of the hour they would be willing to do

so. He and his wife took the midnight hours. People covered Dan in prayer around the clock for a week. During that week, he began to show some improvement! Meanwhile, Amanda Chaffin of Molina had located a small church in Tokyo and contacted the pastor by email. Pastor Shin Kawano spoke and understood English, and enlisted his congregation to also pray. Friends reached out to everyone they knew to enlarge the number of prayers being lifted to God on Dan's behalf. His improvement was slow, but steady. His doctors were amazed! And thrilled! In time, he was removed from life support, taken out of ICU and placed in a ward with three other men who spoke English! Can you imagine how excited he must have been to speak to people who could understand him? Can you imagine the stress Carole had gone through as she waited day by day, only being able to talk to Dan on Facetime for a few minutes while the nurse held his phone for him?

Physical therapy was begun, but Dan developed several blood clots in one leg, and his heart raced at any exercise. Therapy had to be postponed for another week and begun more slowly. He had lost over thirty pounds, and his muscles were limp. He could not stand alone. He is about 6'2" and weighed approx. 200 lb. at the onset of this illness. He was an outdoor guy with no known health issues. We are sure his great physical strength played a part in his survival. Carole, on the other hand is a cancer survivor, and never showed any symptoms of the virus.

Once Carole was allowed to visit Dan, she took food to him to supplement the diet of rice and fish. Pastor Shin went with Carole



Dan and Carole with his care team at the Hospital.

to a grocery store to point out cans of food that did not contain fish or rice. The labels were in Japanese, and unless there was a picture of the contents, she had no idea what was inside.

Back home, friends and family continued to pray. Carole and her sister kept us updated with emails and photos. It was a great day when Dan was strong enough to be released from the hospital after spending three months there! His doctors and two of his nurses posed for a photo with him and Carole as he was dismissed. Carole and Dan thanked the doctors sincerely for their kindness and excellent care. Prayers of thanksgiving were offered by all who had prayed for Dan's healing. Pastor Shin met with them for lunch before they began the long, nonstop flights from Tokyo to Dallas then Dallas to Grand Jct.

A welcome home parade of parked cars and people with flags, signs, balloons, cowbells and costumes greeted them as they reached the last stretch of their journey. God has answered our prayers!

Welcome home,
dear friends!



Dan and Carole's 1st Sunday back at Molina Baptist Church

Lookin' Back

By: Lauren Michaelson

Memorial Day was a few weeks ago. In Collbran there are three cemeteries, Clover, Cedar Crest and Eagalite. They all looked well cared for on Memorial Day.

Sometimes we take things for granted. We go by yards, parks, churches and cemeteries and take for granted just how nice they look. Never thinking of all the work it takes to make them look like that.

The Cemetery District is one of those things we take for granted. We go there once a year and expect it to look well cared for. There is a lot of hard work and things that go on behind the scenes that people don't know about.

My husband Ron was born in Collbran, in 1944. When he was little, the graves were mounded up and were covered with tulips and wild flowers on Memorial Day. There wasn't any green grass. He thought they looked beautiful. I'm sure people took fresh flowers from their gardens too.

Sometime after that, someone decided they needed to be taken better care of. Families had moved away and there was no one to make sure that the graves were groomed for the year. I can understand how they felt as my family is buried in other states and that mythical someone is taking care of them now. So a plan was put into motion to take care of the cemeteries. I know for sure that Cedar Crest was land donated for a cemetery because it is on a rocky edge of the property. I believe that is the same for the other two.

The board would sell and mark the graves out. Family members or friends dug their own graves when their family passed. My husband dug his father's grave by hand in 1978, so I know it was happening that long ago. It was a long, hard job besides being a mentally challenging one. Aaron Kulp and Trent Hooper came and helped him. I will never forget their kindness.

Right before I came onto the board, Raymond Blackman thought they should help a young man in town who was starting a business. So they hired Kent Hill to dig the graves

at the three cemeteries with his backhoe. Trent Hooper and Dick Stites helped out too. Even with a backhoe it was not an easy job, as I said before, it was on a rocky hill. Then he'd have to come back and cover up the grave.

Cliff McDaniel (Father of Miles, Grandfather of Craig) was the undertaker in Collbran for years. When there was no longer a funeral home in Collbran, the McDaniel family continued to help. I believe Craig McDaniel has been at every funeral in the valley for as many years as I can remember. He just does what needs to be done as others in his family did before. We are thankful.

I took Wendall Crane's spot on the board for Cedar Crest Cemetery in the early 1990's. I was the secretary and treasurer. Everything had been handwritten and the notebooks were handed down from person to person through the years. (I believe the early 1900's)

I was lucky, Wendall had gone through the Cemetery book and turned it into a notebook. He made a diagram of the cemetery and numbered each lot. He gave a page to each cemetery lot and a directory for the owner of each lot and where people were buried. I added notes to the book as others had before me. There is so much history in those books.

The lots were sold by the Cemetery Board. Each year became more of a challenge. They tried to keep the price down for the people who lived in the valley and supported it on their taxes as cemeteries were filling up and prices were getting high in Grand Junction and elsewhere. Early on, the Cemetery District had never sold lots, thinking of perpetual care. But what should they do about spaces bought in the early 1900's when families were spread out and often the names were unknown? Did they need to be held open forever? Then there were new challenges: ashes, being mailed to the district from out of state for interment in a family grave and people digging in the cemetery without anyone knowing

it. People wanted to plant flowers or trees and bushes, not realizing how huge they would become. Some would put rocks around a grave or leave beer cans and booze bottles full or empty while they visited their friend. Only once did we have some teens decide to vandalize the cemetery. It was a sad day.

The best part of the job was sitting for hours with Scott and Betty Walck and Raymond and Betty Blackman, talking about the old time families. Stories were told and people were remembered. You weren't just a number in Collbran.

Getting the lawns mowed was quite a job. Evonne & Cecil Stites did it for a couple years, then Karen & Larry Clifton. They always had it looking nice and green for Memorial Day and funerals. The mowers were small, not the big mowers of today! Watering was time consuming and tiring. You planned your time to sprinkle for so many hours and had to drive back later in the day to move them to the next spot and sometimes would find someone had decided their family grave was not green enough, so they moved the sprinklers, putting you days behind. But we did it because these families were our friends. We always wanted the best.

Taking a look back, I understand people so much better. These spaces hold the people that make our world go around. You put things up because it helps you survive. You loved them and want the best care. You don't think about the person who is trying to mow the grass.

The Cemetery District has gone through a lot of challenges in the past 18 years. I for one have noticed all the wonderful things they have done with their "donated" time. The people, who hold these positions, do it out of love, kindness and respect. They receive no pay.

Thank you to the Collbran Cemetery District Board, Lester Wheeler, David Blackman and Tina Branson for a job well done.



Take a look inside one of the nation's largest cattle feedlots

By: Michelle Miller, Farm Babe

According to the USDA, 98 percent of farms in the U.S. are family farms.

But I was excited to tour the 2 percent — a corporate farm owned by J.R. Simplot Company, where they have more than 150,000 head of beef cattle and over a hundred employees at this one Idaho location. It's a real live "corporate" farm that may also be referred to as a "factory" farm.

I didn't know what to expect — I had never been to a feedlot quite THIS big! But I must say I was quite impressed!

The cattle and pens were very clean — they get very little rainfall here compared with other areas of the country, so pens aren't nearly as sloppy. I also noticed the cattle had plenty of room to run around, were comfortable chewing their cud, and acted relaxed and well-tempered.

You can tell they are handled and managed well to where they aren't stressed — an important role in producing delicious beef. A team of cowboys and veterinarians monitor their health daily. And you can see they have numerous breeds here from Charolais to Angus to Holstein.

It is a myth that Holstein (dairy) bull calves typically go to veal; a majority of the time they are raised to full grown beef animals like any other breed.

This feedlot was originally developed for the Simplot potato company to have a place for their potato scraps to go. Instead of reject french fries and such ending up in a landfill, they're consumed by cattle. The animals also eat silage and hay, corn, etc. Grass fed beef? Grain finished beef? Why not french fry-fed beef? Ha. It's good to know livestock nutritionists spend their time figuring out just the right portions to ensure cattle nutrition, health research, rate of gain, and more.

I think sometimes people fear what they don't understand. What do

blank faces of corporations that don't care? I don't really like that term. Do we "feel" like farming should be romantic by Old McDonald and a handful of animals?

All that is real and fine, but with an upcoming population of 9 billion to 10 billion people (and billions of pets to feed), larger farms play an important role in feeding and helping the planet be sustainable. Plus, we get thousands of byproducts from livestock besides just meat and leather. It's fascinating, especially when less than 2 percent of the North American population are farmers and ranchers. Productive and impressive!



How great are these cattle? It looks like I have some new friends here that decided to curiously huddle all around me with friendly licks.

Are they sick on larger feedlots? How is their health monitored?

On these larger scale cattle feedlots, groups of cowboys ride their horses through the pens to check the health of all the cattle. There are about 17 or 18 employed here at this J.R. Simplot Company lot, and each cowboy (or cowgirl) gets five or six horses to walk the pens with. There are 600 pens of cattle here and every pen is checked every day.

This feedlot receives about 3,000 head of cattle per week and also sends out about 3,000 to market each week — the beef goes to market for companies like Tyson Foods or JBS Foods, as a couple of examples.

Cattle arrive here a little bit after they've been weaned and are fed for another four to five months to put on weight to go to market as beef.

When they arrive, they're

weighed, checked, vaccinated, and go to their home pen. This farm has three full-time veterinarians and a team of people to help them, should an animal get sick.

A majority are raised with no antibiotics, but if a cowboy discovers a sick animal, they'll be moved to a "hospital pen," where the staff does all they can to bring them back to health. They don't *all* make it, but this farm does a pretty good job where they only have a 1 percent death loss. That's pretty impressive by industry standards!

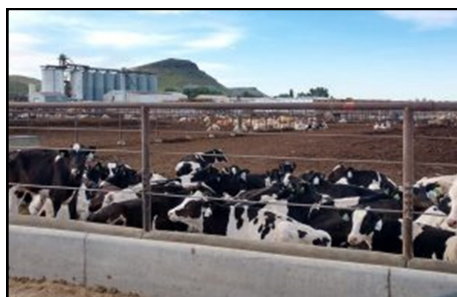
Also, it's important to remember that if medicine is used to help a sick animal get well again, there's a "withdrawal time" before they go to market. This means that *all* meat is antibiotic free.

Are cattle cramped on feedlots? Do they have room to roam?

One thing I always find interesting is when livestock commonly choose to huddle together.

On this farm they definitely have a lot of room to run around ... something anyone would like to see! But sometimes people choose to anthropomorphize situations.

Animals aren't people. They don't think like us nor act like us. Heck, one of my rams impregnates 40 ewes (sheep) at a time and they don't seem to mind the fact he's got 40 girlfriends, lol.



Here you can see, despite all the room to run around, they *choose* to lie together. They're "herd" and "flock" animals for a reason.

They prefer to cluster together regardless of size of living space. Same goes for other animals such as chickens. "Birds of a feather

Continued pg 14

Industry articles

Sponsored by:

Plateau Valley

CATTLEWOMEN

we think of when we think of "corporate" farms or "factory" farming? Ugly

Buyers, let me help you find your new home.



Angie Taylor
Call/Text: (970) 314-1104
ataylor@UnitedCountry.com

If you are considering buying OR selling anytime soon why not put my 15+ years of knowledge and experience to work for you? My unmatched nationwide marketing exposure with United Country Real Estate will position you to reach more buyers faster. Resulting in less time to sell your home!! I am low pressure, high performing and FUN to work with! Spring is just around the corner and buyers are looking. I would be honored to serve you!

Angie Taylor

If your property is currently listed with a Realtor, Please disregard this notice. It is not our intention to solicit the offerings of other Broker.



\$260,000

Check out this beauty! Located in small Collbran, CO and situated on Grand Mesa, largest flat top mountain in the world. A gorgeous recreational playground awaits nearby. Hiking, camping fishing, ATVing, skiing, snowshoeing, a hunting paradise & much more. Over 300 lakes & wildlife galore. This modular was custom built and is very energy efficient. The living space is open and inviting with wonderful views of the mountains to the south. 0.73 acre gives a feeling of space and the convenience of living on the outskirts but close enough to walk to town. 1 large master bedroom and beautiful 3/4 bath with custom tile shower. Heated and cooled 2 car garage completely finished. This is an easy lock and leave with little maintenance required. Great getaway, 2nd home, or hunting camp opportunity.



**Locally Grown, Full Spectrum
Hemp Products
Available at the Harvest
House, online at
www.saltcreekhemp.com
Or call 303-478-5400**



**Dine-In Now Available
with limited seating
Carry Out Still Available**

**Mon-Sat: Open 8am-7pm
Sundays: Open 8am-3pm**

Specials:

Taco Tuesdays: \$2.00 Tacos

Wednesday: Meatloaf

Friday: Fish & Chips

Saturday: Prime Rib

970-487-0141

**WE APPRECIATE
OUR CUSTOMERS!**



Plateau Valley Sports

Grumpy Smith

With CHSAA putting High School Sports being on hold at this time due to the virus situation, our athletes are not being idle. Last week, Athletic Director John Homes met with the High School coaches and they were able to come up with training plans for PV Athletes.

The school board and administration came up with guidelines for athletes and coaches to follow that would allow them to train and still be protected (as best we can) from possible exposure to the virus.

Coach Vig has been offering open gym to the boys basketball players on Monday and Wednesday evenings. The number of athletes on campus is limited to ten, so Coach Vig is offering two sessions to accommodate everyone who is interested. Athletes are working on ball handling skills and shooting, with no scrimmages being done at this time. Each player is issued a ball that will be theirs throughout the summer season so as to not have any cross contamination. The girls basketball summer practice plan is very similar to the boys, following the same protocols and is being held on Monday & Wednesday mornings.

The football program is presently on hold due to the arrival of Alice Bristol, but coach Bristol will be starting up as soon as Kelly, Alice and he are back in Plateau Valley. Athletes who are interested in football may email him at Bbristol@pvsd50.org. He will be putting out an email to athletes soon, so keep an eye out.

The High School Volleyball program is also starting its summer training program and is being held in the morning on Tuesday and Thursdays. The guidelines for training are very similar to the Basketball program, with each athlete being issued a ball, 8 players on campus and social guidelines being followed. If you're interested in Volleyball, you may contact coach Grumpy at Rsmith@pvsd50.org or call him at 970-778-5212.

Amidst the restrictions, all PV athletes are still staying very positive and are thankful the School Board and Administration are doing everything they can to accommodate student athletes this summer.

Plateau Valley Scholarship Winners



Recent Plateau Valley Graduates have worked hard these last 12-13 years and for many, that hard work is paying off. Here are a few winners of local scholarships.

Grand Valley Power Scholarship Winners: \$1500

The committee, who is comprised of educators appointed by the board of directors, determines who is selected based on various elements such as academic performance, essay composition, academic and personal achievements, financial need and community or school involvement. Applicants must also be pursuing undergraduate degrees and currently reside in a home that receives electricity from Grand Valley Power. GVP picked eight recipients from the greater Grand Valley area, two of which were Plateau Valley Seniors.

Josh Meyers: Josh will pursue a career in pre-dentistry and biology. He commits his time participating in sports, volunteering, and working part-time. He commuted back and forth between Collbran to Palisade to play soccer and was selected for the All-Conference team. He will also pursue serving his country as a military medical officer. He is still undecided as to where he will pursue his degree.

Hannah Piland: Hannah will pursue a degree in business administration. Hannah is a member of the National Honor Society, and student council and spends her spare time doing community service. She also volunteers with the Mesa Community Center with the Art Heritage Program, bringing art history stories to life for all ages. She will attend Colorado Mesa University this fall.

PV CattleWomen Scholarship Winner: \$500

Tucker Wiltse: Tucker plans to attend Colorado Mesa University this fall to study electrical engineering. He has been involved in FFA and Robotics all four years and is the current President of the Plateau Valley FFA Chapter. He has earned multiple awards in Speaking competitions and State Agricultural Mechanics. He earned his Masters in Beef Advocacy and has earned his State Degree, the highest achievable degree available to a high school member. As Tucker said in his essay, "I was not raised on a ranch, and I likely will not work on a ranch, but I am an agriculturalist. I have a burning passion for agriculture that was built by my community and the FFA. I will use that passion to do my part by developing technology to help agriculturalists in the future and spread agricultural literacy to my future community."

For Sale

2008 Cameo Carriage LXI fifth wheel, 33ft, four slides. Everything works and in great shape! Comes with full skirting. \$20,000 OBO Call 970-270-2281



Continued from pg 1

comes from our friends at Enstrom. We have kombucha from Basalt, handmade pasta and sauce from Denver, and jerky from Montrose and Dillon CO. Our art and jewelry are from a number of talented local individuals. The apparel comes from Colorado Graphix in GJ. Soaps are provided by Vanilla Goat in Collbran. We also offer the best CBD products the region has to offer with Plateau Valley's own Salt Creek Hemp Co. and Colorado Hemp Solutions located in the Grand Valley. I wish we could name them all and we will continue adding more!

What are your goals for the store?

Our primary goal with the store is to play our part in the local food movement. It's how it used to be and where it needs to return. Over the last few years, we would drive by the vacant store front, a bit saddened by the center of the community being empty, and saw its potential. So we decided to take action and turn our ideas into reality. With our combined background in web development, real estate, construction, photography, food/drink service, we felt we had the skills to put our goals in place. We believe the community needed a vibrant

center and believe good food and drink bring everyone together.

Why Mesa?

We both grew up in the Grand Valley, spent much of our earlier years in this area and have fond memories of the General Store. As adults, we both spent time in bigger cities before gravitating back to our roots. The building was purchased by Ted Martin, a previous resident of Mesa, without whom we could never have gotten this project going. He has been of tremendous support, providing guidance and a generous deal on our lease to help us get started.

What are you most excited about?

We are most excited about the opportunity to serve our community, support other local businesses, and to grow our business. We see tremendous opportunity in the area, our location and the ideas we want to bring to fruition. The commercial kitchen we now have provides the opportunity for both of us to produce and sell our own products (hot sauce, salsa, pickles, honey, jerky, fermented vegetables, sheep cheese, and to offer a fun and quality local menu). All of which have been personal ambitions and we are both very excited to finally have the place and opportunity to

pursue those passions.

What is your favorite part of the community?

The sense of community. It seems to have gotten lost a bit in the big cities. That, and the 360 scenery, abundant wildlife, the vibrant stars/moon, and the sunsets.

Anything else you would like the community to know?

The amount of community support we have received in our first few weeks open has been tremendous and we want the community to know how thankful we are for that support. We want to collaborate with locals and cater to any needs, so if you have not already, please stop in to chat and give us your input. We look forward to meeting you!

Check them out on Facebook, Instagram, or online at MesaBloomMarket.com

Open Wed-Sat 9-6

Greens: Harvested Mon/Tues & stocked on Wed.

Bread: Baked Wed am and stocked by Wed @ noon.

Coffee: Roasted every Tuesday & stocked on Wed

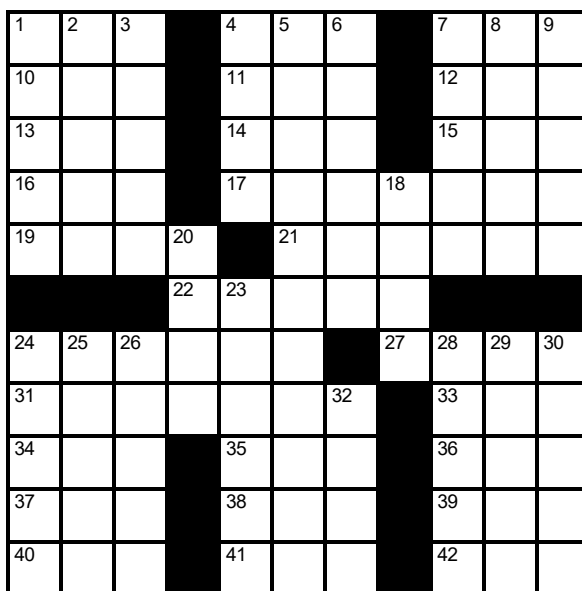
Milk: Bottled Friday and stocked on Sat.



Crossword Puzzle

Across

- 1 Rugged auto
4 Besides
7 Print leaver
10 Startling exclamation
11 Fish eggs
12 Instruction to a Mexican hen?
13 Hogwarts mail deliverer
14 Outdated computer monitor type
15 Slender metal fastener
16 Memory size unit
17 Condescended
19 Donkey cry
21 You and me
22 "The Treasure of the Sierra ---"
24 What became of the OSS?
27 Longest African flower
31 Commentary
33 Gallic refusal
34 Corporate ending
35 Program that performs repetitive tasks
36 Whale group
37 Very skilled person
38 Corroded
39 Application
40 Shelter



- 41 Breach
42 Conference and source of online talks
7 The old man
8 Outlander
9 Proceeds
18 Augury
20 Geneva-based youth org.
23 Car safety device
24 Experiment
25 Therefore
26 Event host
28 Two cents' worth
29 Unfettered
30 Finished
32 Pace

Down

- 1 Manhattan Project goal
2 High building
3 Its delta lies near Astrakhan
4 Electrical discharges
5 Flickertail state
6 Inconvenient orange road sign

Picture Answer

Did you figure out the picture from the May 22nd Issue? It is the Cowboy Strong Banner at PV School. It also hung on the stage at graduation.



Have a suggestion for a picture?
Shoot an email or give a call!
ReadPVTimes@gmail.com or

This page sponsored by

Collbran Auto Parts

57428 Hwy 330 Collbran, CO 81624

970-487-3013

Mon-Fri: 8:00am-5:30pm

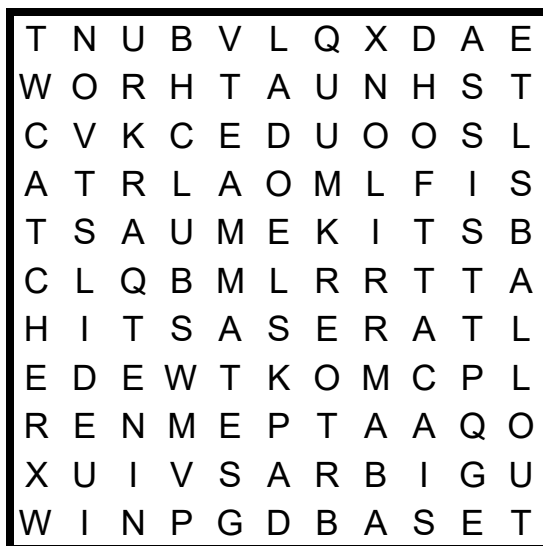
Sat: 8:00am-3:00pm

Sun: Closed

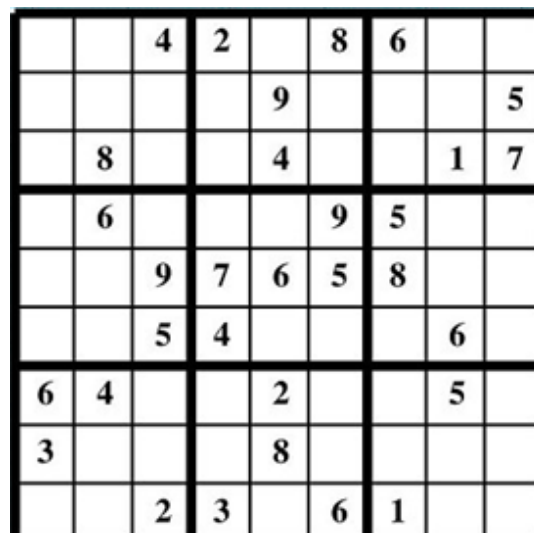


Word Search: Baseball

- Assist Mound
Ball MVP
Base Nine
Bat Out
Bunt Park
Card RBI
Catcher Run
Club Slide
Deck Sport
First Tag
Foul Team-mate
Game Throw
Hits Vault
Home Walk
Lose Win
Mitt



Sudoku - Hard 1.3



Answers: Pg 12 © Memory-Improvement-Tips.com. Reprinted by Permission

Obituary

Joseph Kent Fowler

November 4, 1944— May 20, 2020



On Wednesday, May 20th, 2020, Joseph Kent Fowler, loving father, grandfather and friend passed way at the age of 75. Joseph was born on November 4, 1944 in New York

City. He was the son of Joseph Fowler and Francisca Wall Fowler. He graduated high school from Bronxville, NY in 1963 and went directly into the US Air Force as an Airman First Class. After serving, Joseph was honorably discharged in 1967 and moved to Denver, CO. There he subsequent-

ly earned a B.A. degree with emphasis in Pre-Law and Political Science from the University of Denver, and went on to become a Paralegal. Joseph worked as a stock broker, international trade consultant, and investor.

In 1975, he purchased property in Mesa, Colorado to begin a new “hobby” in ranching and raising cattle. After 1994, he left Denver and the city life behind, and became a permanent, self-taught rancher. Joseph called the Mesa ranch home until his death. He will be remembered as a hardworking, generous man, who took pride in everything he did. He was witty, humorous, and incredibly intelligent.

Joseph was preceded in death by his mother and father. He is survived by his older brother Michael Fowler (Maryann) of Farmington, CT; his four children Den-

ise Crawford (Kevin) of Denver, CO, Steven Fowler of Albion, CA, Kahli Leitner (Thomas) of Collbran, CO, and Kade Bourgeois (Valerie) of Mesa, CO; 7 grandchildren, and 2 great-grandsons. Joseph is also survived by his three former wives, Elena, Jeanette, and Melanie with whom he remained friendly. Melanie served as a caregiver for him during the last three years of his life, and is the primary reason he was able to continue living on his ranch.

A celebration of life will be held on August 1st at Joseph’s ranch in Mesa, CO at 12pm. All are welcome to attend. In lieu of flowers, please make donations to the Brain & Behavior Research Foundation at bbrfoundation.donordrive.com/campaign/JosephKentFowler.

Submitted by:
Plateau Valley Historical Preservation Society



It's that time of year again. Cows are frequently seen heading through town on their way to late-spring pasture before heading to the forest for the summer. This picture might almost be present day if it weren't for the fantastic 1920's cars parked on Main Street.

Collbran Job Corps is hiring 14 full time positions.
Call for more information: 970 487-3576

Various branches of City Market in Grand Junction are hiring.

Music lessons students 7 years and older. Piano, guitar, and wood or brass band instruments. Instruction for beginner to intermediate
Call Sue Bellotti 487-3474

For sale: 2008 Cameo Carriage LXI fifth wheel, 33ft, four slides. Everything works and in great shape! Comes with full skirting. \$20,000 OBO Call 970-270-2281

ISO small containers to grow seedling vegetable starters that will be for sale at this year's PV Farmers Market. 4, 6, 8 packs or large flats work, too. Please text or call us with the cost. Thanks, Margaret 970-773-1916

Champion Shortie Jack Russells. Ready for forever homes. \$600.00
970-986-0800 or 970-250-5188. Leave a msg.

Plateau Valley CattleWomen Brand Napkins & Afghans
are available at Harvest House. Or Contact Sylvia Span-
gler 487-3402

500 gallon Fuel Tank with stand, Complete with Hose, Filter, Nozzle: \$500.00 Call 487-9949

Custom Kydex, Knives, Holsters, Sheaths, etc.... Offer self
defense instruction: 813-730-0303
www.primaloptions.com Or at Collbran Supply

Custom made fresh baked pies, cookies, bread, and gluten free. Call or text Debbi on her cell # 818-269-8648

For any Carpenter work needed in Plateau Valley, call Brooks Ealy. 970-210-5912

Owens & Son's Inc. Septic, pumping, plumbing repairs
and drain cleaning 20 years experience
970-986-7426 or owensandsonsincc.com

Home Repair Service by J. Stoner LLC Powderhorn Area
Specialist, Home, property mtce, remodeling, carpentry,
cleaning etc.. 352-316-2497

Lawn Care and maintenance, mow, trim, etc....
Call Delbert Koehn 970-623-6370

Rockin' M services. Providing variety of services for your 2nd home. Call Kris 970-640-1738

Trash Pick Up. \$15/month up to 7 bags/wk. John Blair: 970-487-0242

Certified Automotive Technician in Collbran. Work on all makes & models. Zachary 970-296-0131

*Please send your 10-15 word Classifieds to
ReadPVTimes@gmail.com

A sincere thank you to all the HopeWest teams and volunteers who made my time with them such a pleasure. Plateau Valley is blessed to have your presence in our community!

-Nona Kelley Carver

Thank you American Legion for your patriotism. Thank you
for honoring those who served and lost their lives.
Memorial Day is made special because of you all.

Welcome to the world Alice Anne Bristol! On May 29th, 8:20am, Kelly and Brian Bristol of Collbran welcomed their daughter at 5lb 8oz and 19" long. Alice was in a bit of hurry and came a few weeks early, earning a brief stay in the NICU. Mom and baby are doing well and grateful for the wonderful NICU staff and for all the support from friends and family.

Welcome Brynlee Grace Slade, born May 8, 2020. She weighed 8lbs 1 oz. Parents Bryan and Charlori, along with big brother Coulter, are thrilled to have her home. While sleep has become a hot commodity, they are enjoying every minute.

Have a message you would like to share?

Send it to PO Box 89, Collbran

Email: ReadPVTimes@gmail.com or
call 487-0291

Community Celebrations are free of charge.

Do you provide a service in this community or know someone who does?

Have your information listed for free in the Classifieds section of the PV Times.

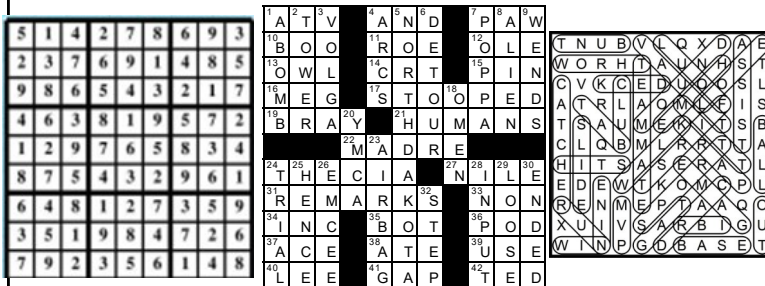
Next Issue: June 26, July 10

Printed: 2nd & 4th Friday

Deadlines: 1st & 3rd Friday

Next Deadlines: June 19, July 3

Pick up your copy in Collbran Café,
Marigolds, WagonWheel, Harvest House
or Valley Ranch





Plateau Valley Heritage Days Cancelled for 2020

Submitted by: Town of Collbran



We are sad to announce that the 2020 Plateau Valley Heritage Days Celebration in Collbran has been cancelled. This includes the Parade on Main Street, Fireman's Pancake Breakfast, Kid's Carnival, Old West Gunfight, the Street Dance, our CPRA Rodeo and Junior Roughstock Event as well as the Local's Only Calcutta and our fireworks show. There is a tremendous amount of time and coordination needed to put on an event like this, including efforts by the Plateau Valley Heritage Days Rodeo Committee, Town of Collbran, Collbran Marshal's Office, Plateau Valley Fire Department, Parade Committee, PV Cancer Fund, PV Historical Society, American Legion, Plateau Valley Cattlewomen, and so many others.

We want to give a very heartfelt THANK YOU to all of our sponsors, volunteers and supporters during these difficult times. The current economic difficulties have prevented many businesses and individuals from being able to sponsor the event as they have in years past. Without the necessary financials, combined with the uncertainty about future state and county mandates regarding the size of gatherings, canceling is the best decision at this time. We are also very concerned that with other towns canceling Fourth of July events, even more people than normal will flock to Collbran, putting the community's health at risk if the town proceeds with a traditional celebration. We apologize for any disappointment this may cause and hope to welcome you back in 2021 for an amazing 4th of July celebration.

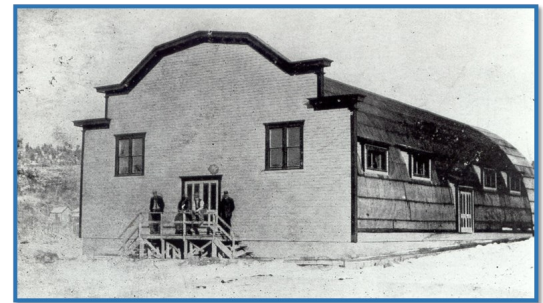
Collbran Auditorium Function and Sentiment Survey

Submitted by: Town of Collbran

The 5,096 square-foot Collbran Auditorium was built in 1905 and has continued to serve as a community gathering place for the town over the last 115 years. In 2017, the building was designated a Mesa County History Landmark.

In 2019, the town received a History Colorado State Historic Fund grant to undertake a Historic Structure Assessment (HSA) to assess the auditorium's existing condition and help develop a preservation plan for the building's future. The study (available for review at the Town Hall) concluded that the building is in overall fair to good condition with some critical and serious deficiencies that must be addressed in order to preserve the building's integrity and address accessibility issues.

The study laid the groundwork for the next steps. The town seeks to gauge the value of the auditorium to the community, by asking members to respond to questions and scenarios that contemplate the auditorium's future. The University of Colorado Denver – Center for Community Development, along with members of the community that attended our public meeting in February, created a Survey that is available online at <https://ucdenver.co1.qualtrics.com/jfe/form/SV8GgWSAHPLrtoacB> or paper copies are available at Town Hall. You may also contact Town Hall to have one emailed to you 970-487-3751.



The deadline for returning the Survey is June 19.

Thank you to University of Colorado Denver – Center for Community Development
and Colorado Department of Local Affairs

GROSS EXCAVATING INC.

Lance Gross
970-250-3253 • 970-268-5701
lance@grossexcavatinginc.com

P.O. BOX 417
MESA, CO 81643-0417

Real Colorado Properties

Julie Piland
970-985-0913
Juliepilandproperty@gmail.com
<http://JuliePiland.com>

We Sell Lifestyle

What has happened?

I am sitting in my office on Monday morning wondering what has happened to my country? We have a virus causing havoc, we have freedoms being threatened, we have fear as a palpable atmosphere in many parts of the world. Then, to top it off, we have an injustice by the ones we trust (the Floyd case) and a response of injustice in the rioting and agenda pushing. It seems to me everyone wants to be heard but nobody wants to listen. How did we get here?

I think, in part, the answer is the same one that a comic writer Walt Kelley had his character Pogo say “we have found the enemy and he are us”. Here is a quote from an article Sophia Lee wrote titled *On my arrogant heart*. I believe it addresses part of the problem that has lead us into these trying times. “It’s seeped into the language of our culture today, and we see it often in the headlines of YouTube and Facebook and certain media posts: “So-and-so absolutely DESTROYS so-and-so!” “So-and-so conservative or liberal pundit leaves so-and-so SPEECHLESS!” “So-and-so OUTSMARTS idiot so-and-so!” “Compilation of snowflakes completely TRIGGERED!” “So-and-so WRECKS so-and-so!” “The TRUE story of xx agenda!” And so on and on.”

For me, identifying part of the problem is helpful in identifying part of the solution. I find God working on me to change my habits or actions that perpetuate the problem, and He does this through scripture and friends convicting me. So here are MY solutions to the problem, I need you to understand these solutions are pills for me to take not arrows for me to shoot others with. So here goes, Philippians 2: 3-4, “Do nothing from selfish ambition or conceit, but in humility count others more significant than yourselves. Let each of you look not only to his own interests, but also to the interests of others. Have this mind among yourselves, which is yours in Christ Jesus.” Also Romans 12:9-12, “Let love be genuine. Abhor what is evil; hold fast to what is good. Love one another with brotherly affection. Outdo one another in showing honor. Do not be slothful in zeal, be fervent in spirit, serve the Lord. Rejoice in hope, be patient in tribulation, be constant in prayer” 1 Thessalonians 5: 15-17 “See that no one repays anyone evil for evil, but always seek to do good to one another and to everyone. Rejoice always, pray without ceasing, give thanks in all circumstances; for this is the will of God in Christ Jesus for you.”

From this I will be working on my humility, my love for others, my prayer life. So I will be busy for a long time working on my response to a problem that is as old as mankind. I believe we all can do better by listening to God in our life and listening to each other.

For me I find this best displayed in church and I would love to have you visit one of the churches in your area.

Coming together in Him,
Loyal May
Scott Nilson
Kyle VanArsdol

Sponsored & Submitted by

Grace Bible, Grand Mesa, and Molina Baptist Church

Grace Bible Church

Sunday
10:30 am Worship Service
Thursday
6:00 pm Bible Study

Grand Mesa Church

Sunday
11:00 am Worship Service
Wednesday
6:30 pm Bible Study

Molina Baptist Church

Sunday
8:45am Contemporary Service
9:00am Sunday School
11:00am Traditional/Blended Service
Tuesday
8:00 am Prayer Meeting

Continued from pg 6

flock together” is the expression, and whether there’s 50 or 5,000, they like to be in their groups. They don’t always think like us and smaller living quarters don’t bother them like it might bother us.

Just some food for thought. We all love to see animals running around with plenty of room to kick their feet up, however, decades worth of research from the animal scientists and veterinarians of the world shows that animals can and are very happy and content in situations that may not always make sense to us humans.

I always say that we should never judge a farm by it’s

cover, and just because one is big doesn’t mean it’s bad. Don’t let media sensationalism, activists, or marketing labels tell the story: Any farm can do a great job regardless of size or label. It’s important that people connect with these places to learn the real facts on just how well these animals are treated. Farms like this impress the heck out of me and remind me of our own — just bigger and with more employees. If you ever get a chance, check out feedlots like this to see and learn for yourself!

Michelle Miller, the Farm Babe, is an Iowa-based farmer, public speaker, and writer, who lives and works with her boyfriend on their farm, which consists of row crops, beef cattle, and sheep. She believes education is key in bridging the gap between farmers and consumers. She was happy to share her experience with the Plateau Valley.



WE INSURE MORE THAN YOUR STUFF.
WE INSURE A LIFESTYLE

HOME | FARM & RANCH | AUTO | BUSINESS | LIFE | ANNUITIES



360 Insurance Company

Ashley Scarlett
970.625.5536
105 Main St, Collbran
129 W 4th St #102, Rifle
www.ashleyscarlettins.com



Property-casualty insurance products offered through 360 Insurance Company/Laramie, Wyoming. Life insurance & annuity products offered through Greenfield Life Insurance Company/West Des Moines, Iowa.

Agriculture Resource Management and You

Learn all about using researched based
"Best Management Practices" (BMPs)

For:

- Livestock Grazing Management Systems
- Pasture and Hay land Management
- Range land Ecosystem Management
- Holistic Weed Management
- Irrigation Water Management
- Wildlife and Wildlife Habitat Management

Maximize sound "BMPs" land use practices while at the same time improving plant community sustainability and yields. A win, win opportunity by doing it right the first time! A quick Email and/or call can make it a reality.

Your Call! Call or email me at:

Email: irm.ecosystem@gmail.com

Phone #: (970) 778-7783

Dick Antonio, IRM Consultant:
Colorado State University
Trained in Agriculture Resource Management,
and Rangeland Ecosystem's Management.



THANK
YOU

American Legion visited every cemetery in Plateau Valley and the Women's Memorial in Collbran in order to honor those who lost their lives in service to their country. A summation of locals who fought in various conflicts was shared by Post Commander Kaleb Julius. A gun salute, followed by Taps, brought the brief, but powerful, service to a close. Thank you American Legion Post 86, for your service and for reminding us all the importance of Memorial Day.

\$10,000 Reward

for Information on Missing Cattle from Green Mountain and Grand Mesa

Brand: R-E
Ear tags: Lilac colored

Please contact Ron 956-330-2079
All information will be kept confidential

Missing Cattle



For Sale - Under Contract

\$299,000

Molina, Colorado

2.7 acres with lovely postcard views

3 bed, 2 bath 2400 sq ft

Completely remodeled, beautiful
and ready for new owners!

Approx .65/acre pasture/hay ground with irrigation



Plateau Valley Times

PO Box 89 Collbran, CO 81624 Phone: 487-0291

Email: ReadPVTimes@gmail.com

Plateau Valley Times Staff & Contributors:

Rachel Schowalter
Lynne Sherrod
Nona Kelley Carver
Annie Hughes
Lauren Michaelsen
PVHPS
Grumpy Smith

Owner/Editor in Chief
Proofreader
Poetry
Growing Things
Lookin' Back
Historical Photos
PV Sports Writer

Plateau Valley Times, USPS #023-647, is published approximately twice each month, by Rachel Schowalter. Plateau Valley Times at 3007 Orchard Ave, Collbran, CO 81624. Subscription Price \$16.00 per year. Periodicals postage paid at Collbran and additional mailing offices. **Postmaster:** Send address changes to Plateau Valley Times PO Box 89 Collbran, CO 81624.

Contributions for publications are welcome with the understanding that Plateau Valley Times cannot be held responsible for loss or damage. Enclose a self addressed stamped envelope with all unsolicited submissions to ensure return. Articles and letters should be signed and legible, and will be edited and published at the discretion of the staff. Opinions expressed by columnists, guest editorialists and writers are not necessarily the views of PV Times. The Times reserves the right to edit or reject any advertising that, in the sole opinion of the editor, is not appropriate for this publication. There will be no cash refunds granted to advertisers or subscribers.

Subscriptions in Plateau Valley: \$16.00 per year.

Outside the Valley: \$18.00 per year.

ReadPVTimes@gmail.com

Next Issue: June 26

COLLBRAN BRANCH LIBRARY

The libraries closed March 14 in response to the coronavirus pandemic. Since that time, library staff have been rearranging shelving and furniture to enable better social distancing in the buildings, as well as installing see-through shields around patron service desks and planning how to offer modified services upon reopening. In children's areas, toys have been removed because at the current time, staff cannot adequately clean them between uses.

Once open, the number of patrons inside library buildings will be limited to encourage social distancing, and patrons will be admitted on a first-come, first-served basis.

Library staff will wear masks, and patrons are encouraged to do so as well.

Patrons returning materials will be asked to use the outside book drops rather than going into the library buildings.

Reserve your books and pick them up curbside!
970-487-3545

1. Place your items on hold in our online catalog.
2. You'll be notified when items are available.
3. After you're notified, call your library branch to schedule a pick-up time.
4. Pick up your items curbside. (Appointments only; no drop-ins, please.)

Collbran Branch Re-Opened June 9th

Hours: Noon-6pm Tues/Thurs
Noon-5pm Friday
10am-2pm Saturday

Reserve your books and pick them up curbside! 970-487-3545

Summer Reading will occur and is online.
Registration has begun.

Continue to watch Live Story Hour on
Mesa County Libraries Facebook page!
Tuesday and Thursday @ 10am
Spanish on Wednesdays



*Logo Photo Credit: © Can Stock Photo / santomus