



# CATALOG

## 2024





# OUR HISTORY

Bear Cabinetry was established in 2024. The founders aimed to create a company dedicated to providing high-quality, stylish cabinetry that combines durability with aesthetic appeal. The initial goal was to address a gap in the market for well-designed, reliable cabinetry solutions that met functional, budgetary, and design needs of homeowners and businesses.

As it started to gain traction, we began expanding the product offerings to include a wider range of cabinetry styles and options, catering to various tastes and needs, with many more additions to come as time goes on.

Bear Cabinetry is beginning to grow its market presence from local to regional and eventually national distribution. This expansion is supported by strategic partnerships, dealer networks, and increased production capabilities.

From the beginning, Bear Cabinetry has been committed to high standards of quality, craftsmanship, and customer satisfaction. This commitment is and always will be reflected in the attention to detail and use of premium materials.

Our company's focus on customer needs and satisfaction helps us build a strong reputation in the industry, leading to positive word-of-mouth and repeat business for us and our dealers.

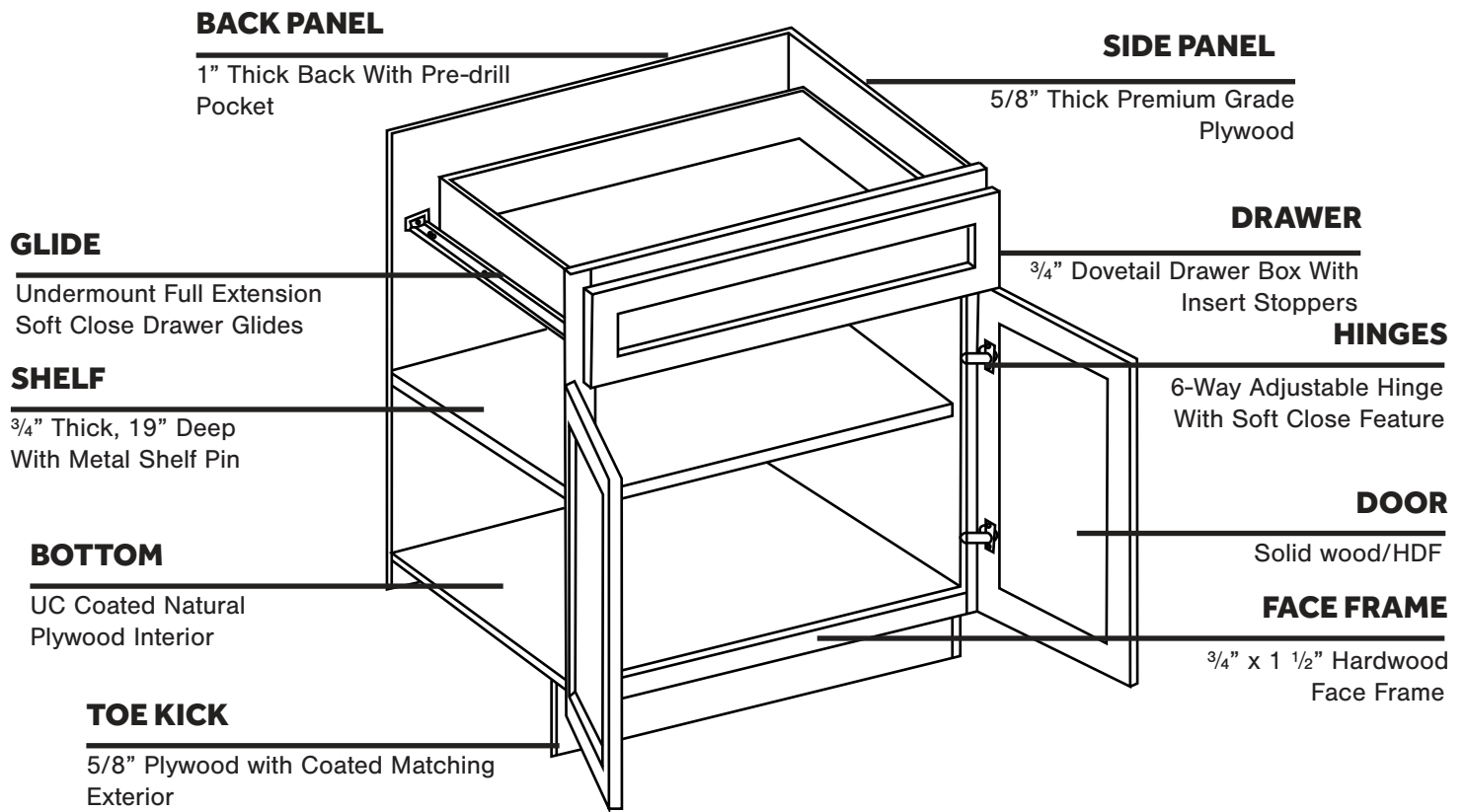
Bear Cabinetry has continuously adapted to changing market trends and customer preferences, incorporating new technologies and design trends into its offerings. The company has also embraced sustainability practices, including the use of eco-friendly materials and processes.

Looking forward Bear Cabinetry aims to continue its legacy of innovation and quality.



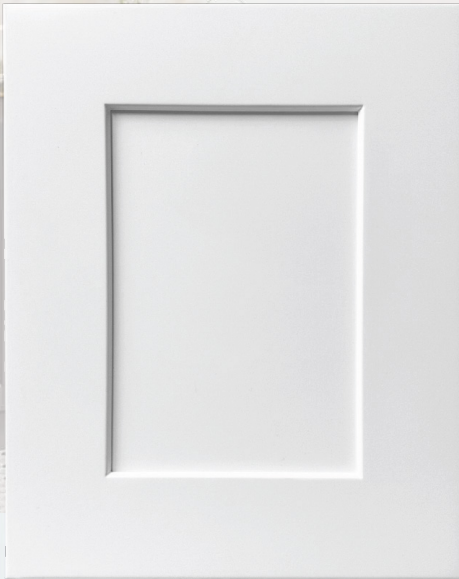


# CABINET CONSTRUCTION



# SHAKER

## SERIES





# SHAKER WHITE



## DESCRIPTION

The Shaker White style, a classic and timeless design, embodies simplicity, functionality, and elegance. This style of cabinetry is a popular choice for kitchens and other spaces, known for its clean lines, versatility, and ability to complement a variety of design aesthetics.



## DESCRIPTION

Shaker Light Gray is a painted finish that gives the kitchen a modern industrial look without feeling too dark. This style offers an impressive minimalist masterpiece with enduring appeal.



SHAKER LIGHT GRAY



# SHAKER NATURAL



## DESCRIPTION

The Shaker Natural style has a timeless and enduring quality. The inherent warmth and authenticity of the natural wood create a design that can transcend changing trends and remain a classic choice for homeowners seeking lasting elegance.



## DESCRIPTION

The Shaker Driftwood cabinet captures the essence of coastal living and rustic elegance, drawing inspiration from weathered wood and the natural beauty of driftwood. This unique cabinet style adds a touch of organic charm to any space, blending coastal aesthetics with a sense of well-worn, relaxed sophistication.



SHAKER DRIFTWOOD



# BEAR SERIES



# BEAR WHITE



## DESCRIPTION

The Bear White style is a classic and timeless choice for kitchen and bathroom cabinetry. It's characterized by its clean and bright appearance, making it a popular option for a wide range of interior design themes. Bear White exudes classic elegance that stands the test of time. It can suit both contemporary and traditional design schemes, offering a timeless quality that doesn't go out of style.





## DESCRIPTION

The Bear Green represent a harmonious fusion of classic sophistication and nature's timeless beauty. The muted and tranquil hue of green exudes a sense of tranquility and rejuvenation, making it a popular choice for kitchens and living spaces.



BEAR GREEN

# BEAR BLUE

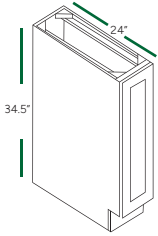


## DESCRIPTION

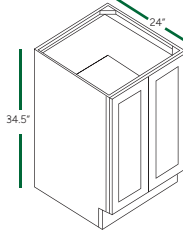
The Bear Blue style is the epitome of sophistication and versatility. The deep, rich shade of blue brings an air of timeless elegance to kitchens and living spaces, offering a modern twist on a classic color. The color choice brings a modern edge to classic designs, creating a space that feels both sophisticated and up-to-date.



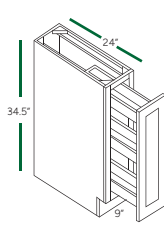
## BASE CABINETS (34 1/2" HEIGHT, 24" DEEP)



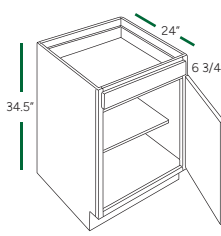
**FULL DOOR BASE**  
BF0924 BF1524 BF2124 BF1224  
BF1824



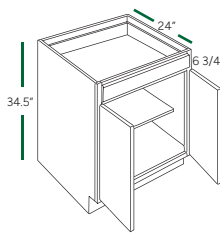
**FULL DOOR BASE**  
BF2424 BF3024 BF3624 BF2724  
BF3324



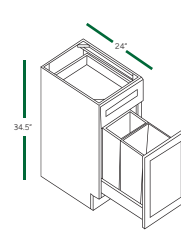
**FULL DOOR BASE 9"**  
BF09-PO



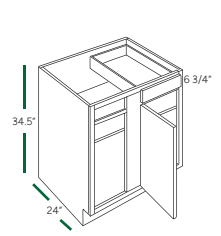
**BASE SINGLE DOOR**  
B18 B15 B12 B21



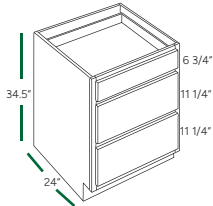
**BASE DOUBLE DOOR**  
B30 B36 B24 B33 B27



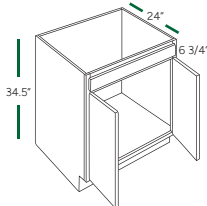
**BASE WASTE BASKET**  
B18TR



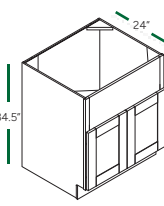
**BLIND BASE**  
BBC42/45 BBC39/42



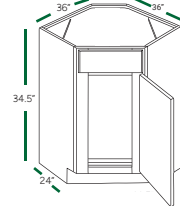
**3 DRAWER BASE**  
DB12 DB21 DB30  
DB15 DB24 DB33  
DB18 DB27 DB36



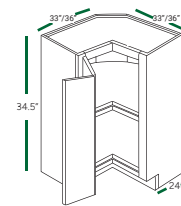
**SINK BASE**  
SB36 SB30 SB24  
SB33 SB27



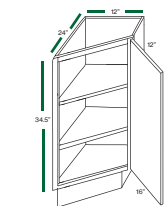
**FARMER SINK**  
FS33 FS36



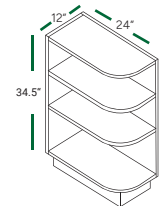
**DIAGONAL SINK BASE**  
DSB36



**LAZY SUSAN**  
LSB33 LSB36

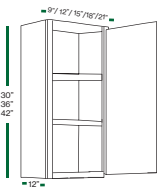


**TRANSITIONAL BASE**  
BTL12 BTR12



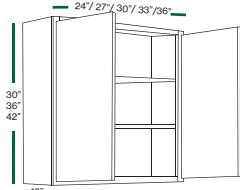
**TRANSITIONAL BASE**  
BES12L BES12R

## WALL CABINETS (12" DEEP)



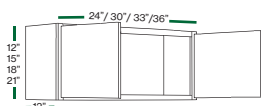
**1 DOOR**

W0930 W0936 W0942  
W1230 W1236 W1242  
W1530 W1536 W1542  
W1830 W1836 W1842  
W2130 W2136 W2142



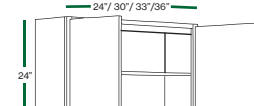
**2 DOORS**

W2430 W2436 W2442  
W2730 W2736 W2742  
W3030 W3036 W3042  
W3330 W3336 W3342  
W3630 W3636 W3642



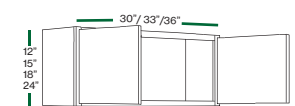
**2 DOORS**

W3012 W2418 W3021 W2415 W3312  
W3015 W3018 W3612 W3318 W3315  
W3618 W3615



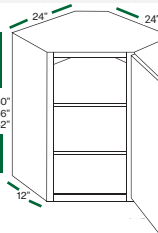
**2 DOORS**

12" W2424 W3024 W3324 W3624



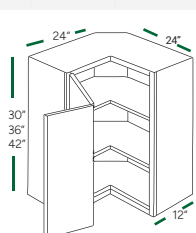
**2 DOORS**

W301224 W301524 W301824 W302424  
W331224 W331824 W332424 W361824  
W361224 W362424



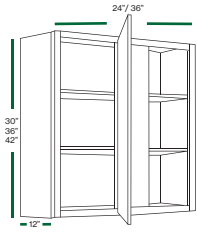
**WALL DIAGONAL CORNER**

WDC2430 WDC2436 WDC2442



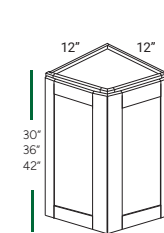
**PIE CUT CORNER**

WPC2430 WPC2436 WPC2442



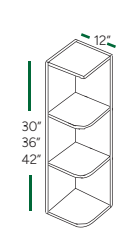
**BLIND CORNER WBC2430**

WBC2436 WBC2442  
WBC3630 WBC3636 WBC3642



**WALL ANGLE END**

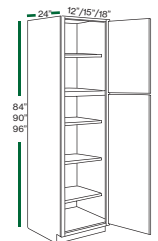
WAE1230 WAE1242 WAE1236



**OPEN END**

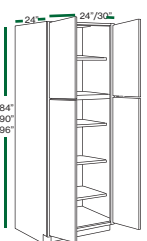
OE1230 OE1236 OE1242

## PANTRY TALL CABINETS



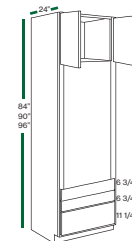
**PANTRY 2 DOORS**

TP128424 TP129024 TP129624  
TP158424 TP159024 TP159624  
TP188424 TP189024 TP189624



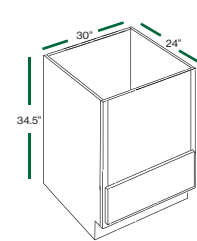
**PANTRY 4 DOORS**

TP249624 TP308424 TP309024  
TP309624 TP249024 TP248424



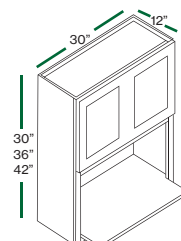
**OVEN CABINET**

OC3384 OC3390 OC3396



**MICROWAVE BASE**

BMC30

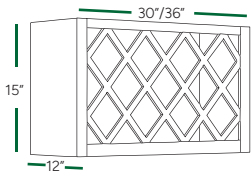


**WALL MICROWAVE**

WM3030 WM3036 WM3042

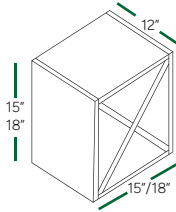
## MICROWAVE CABINETS

# SPECIALTY ACCESSORIES



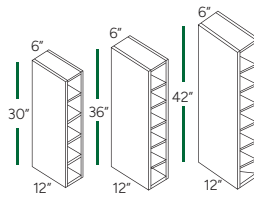
WINE RACK

WR3015 WR3615



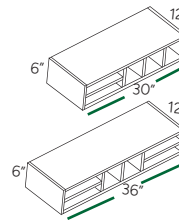
WINE RACK

WR1515 WR1818



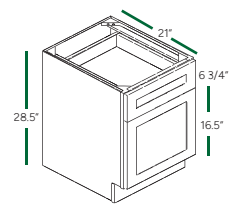
WINE CUBE

WC0630 WC0636 WC0642



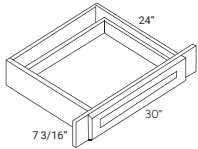
WALL ORGANIZER

WO306 WO366



FILE DRAWER BASE

FD1821



KNEE DRAWER

BKD30 KD30

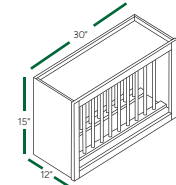
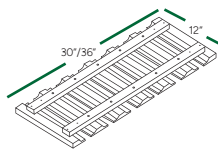


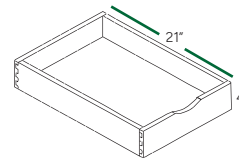
PLATE RACK

PR3015



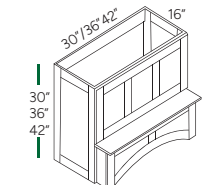
GLASS HOLD GL-30

GL-36



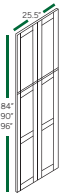
ROLL-OUT TRAY

RD15 RD24 RD33  
RD18 RD27 RD36  
RD21 RD30



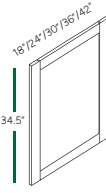
CUSTOM HOOD

RHA3030 RHA4230  
RHA3630 RHA4236  
RHA4242



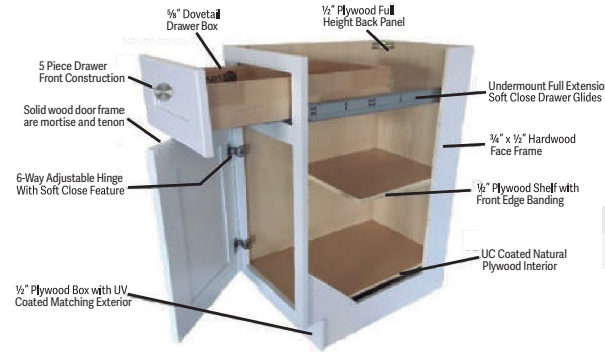
PANEL DOOR

WP-T84 WP-T90 WP-T96



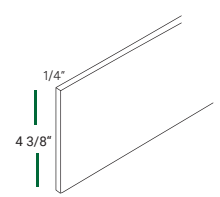
PANEL DOOR

WP-BASE 18 WP-W30  
WP-BASE 24 WP-W36  
WP-W42



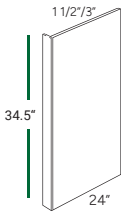
POST

SP336



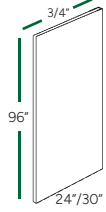
TOE KICK

TK8



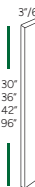
DISHWASHER PANEL

DWR1 DWR3



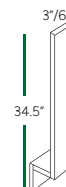
REFRIGERATOR PANEL

REP2496-1 1/2 REP2496  
REP3096-1 1/2 REP3096



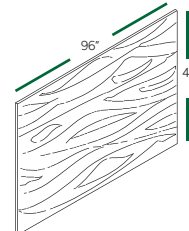
WALL FILLER

WF330 WF630 WF396  
WF336 WF636 WF696  
WF342 WF642



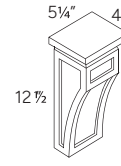
BASE FILLER

BF3 BF6



PANEL

PLY-48x96x1/4  
PLY-48x96x3/4



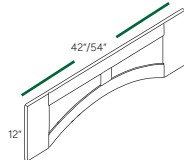
CORBEL

CMCB CML



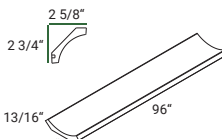
VALANCE VAR36

VAR54



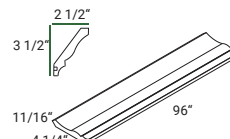
VALANCE

VARP42 VARP54



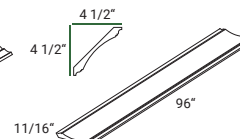
MOLDING

CM4



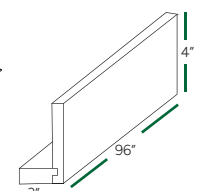
MOLDING

CM6



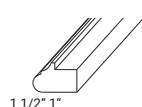
MOLDING

CM7

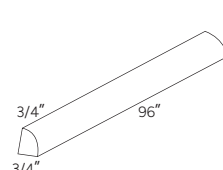


MOLDING

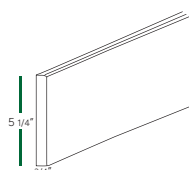
CMR4



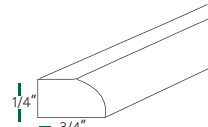
LIGHT RAIL MOLDING  
LRM



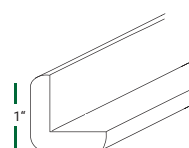
QUARTER ROUND MOLDING  
QRM



BASE BOARD MOLDING  
BBM5

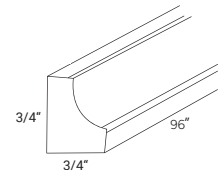


SIMPLE SCRIBE  
SM8-S



OUTSIDE CORNER

OCM8



INSIDE CORNER

ICM8



# Limited Warranty

## 5-Year Limited Warranty

Bear Cabinetry offers a five-year warranty covering defects in materials and workmanship. If an issue arises, Bear Cabinetry may choose to repair or replace the product.

This warranty does not cover issues resulting from improper storage or installation, and it has several exclusions, including:

- Costs associated with removing or installing materials.
- Natural variations and aging of wood.
- Damage from misuse, abuse, negligence, or unauthorized modifications.
- Products purchased without finish.
- Labor charges and incidental or consequential damages.

Certain conditions are not covered, including:

1. Natural aging or wood characteristics.
2. Damage from misuse, abuse, negligence, alteration, or non-residential use.
3. Installation of heating vents near cabinets.
4. Use with non-Bear Cabinetry products.
5. Final sales or clearance items.

For doors with warping or panel shrinkage of 1/4" or less, allow them to hang for one season before requesting a replacement. Ensure proper installation before initiating a claim.

For warranty claims, contact your local authorized Bear Cabinetry dealer.

For assistance with warranty claims, customers are encouraged to contact their local authorized Bear Cabinetry dealer.



BECOME A DEALER

VISIT OUR SITE

