

# ALBASMA

GIFTS AND JEWELLERY BOXES PREPARING L.L.C

C O M P A N Y P R O F I L E

## **CONTENTS**

THIS FILE CONTAINS A BRIEF GLIMPSE ABOUT OUR COMPANY'S VARIOUS SERVICES ,PRODUCTION WAYS AND QUALITY CONTROL METHODS

# OUR CORE VALUES

**DESIGN**

**CONSISTENCY**

**QUALITY  
STANDARDS**

**FINEST  
MATERIALS**



OUR SLOGAN WAS BASED UPON OUR CONSISTENT RESULTS  
**WHERE LUXURY IS MADE**



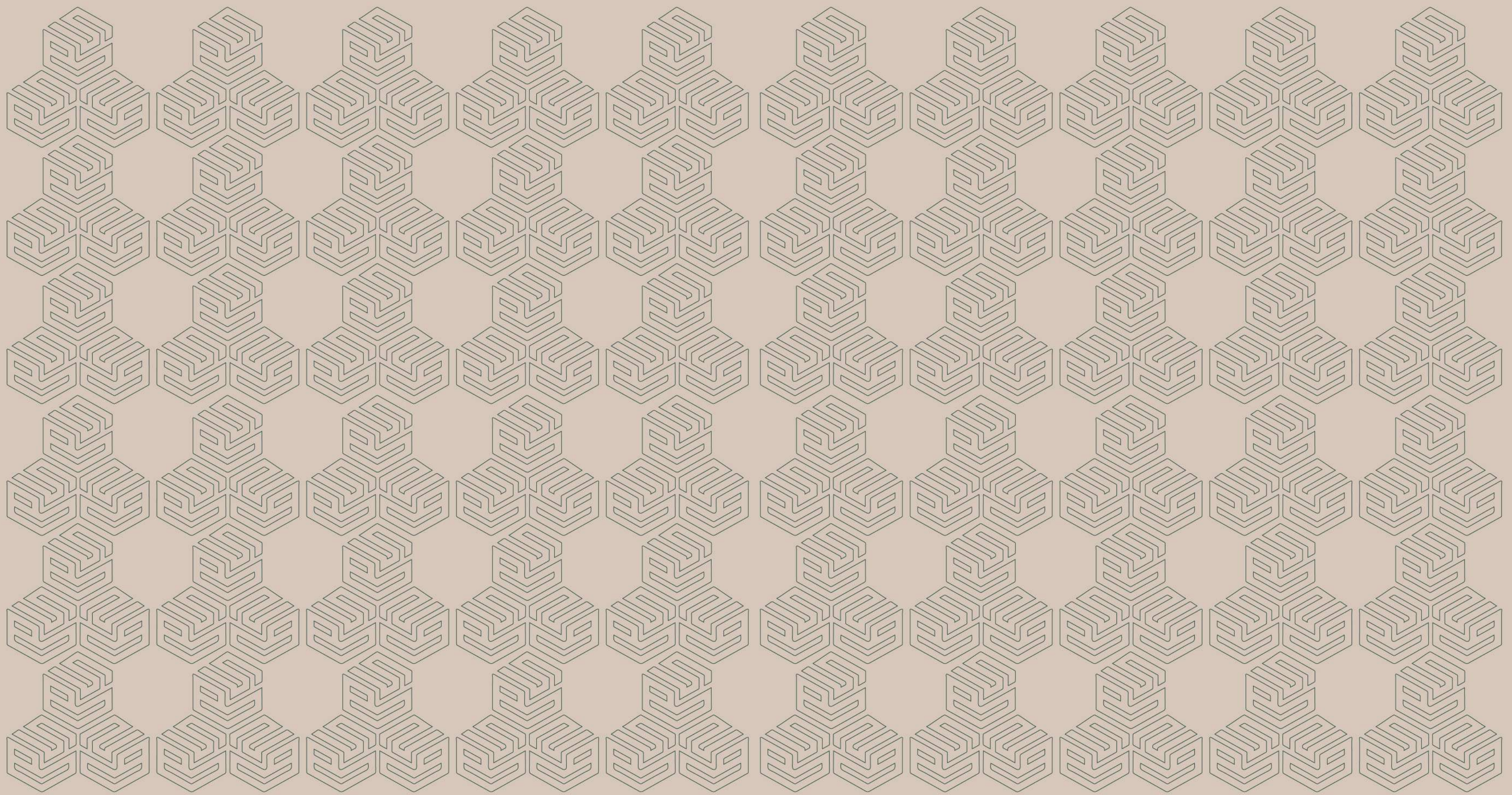
**ALBASMA**

GIFTS AND JEWELLERY BOXES PREPARING L.L.C



## **LOGO CONCEPT**

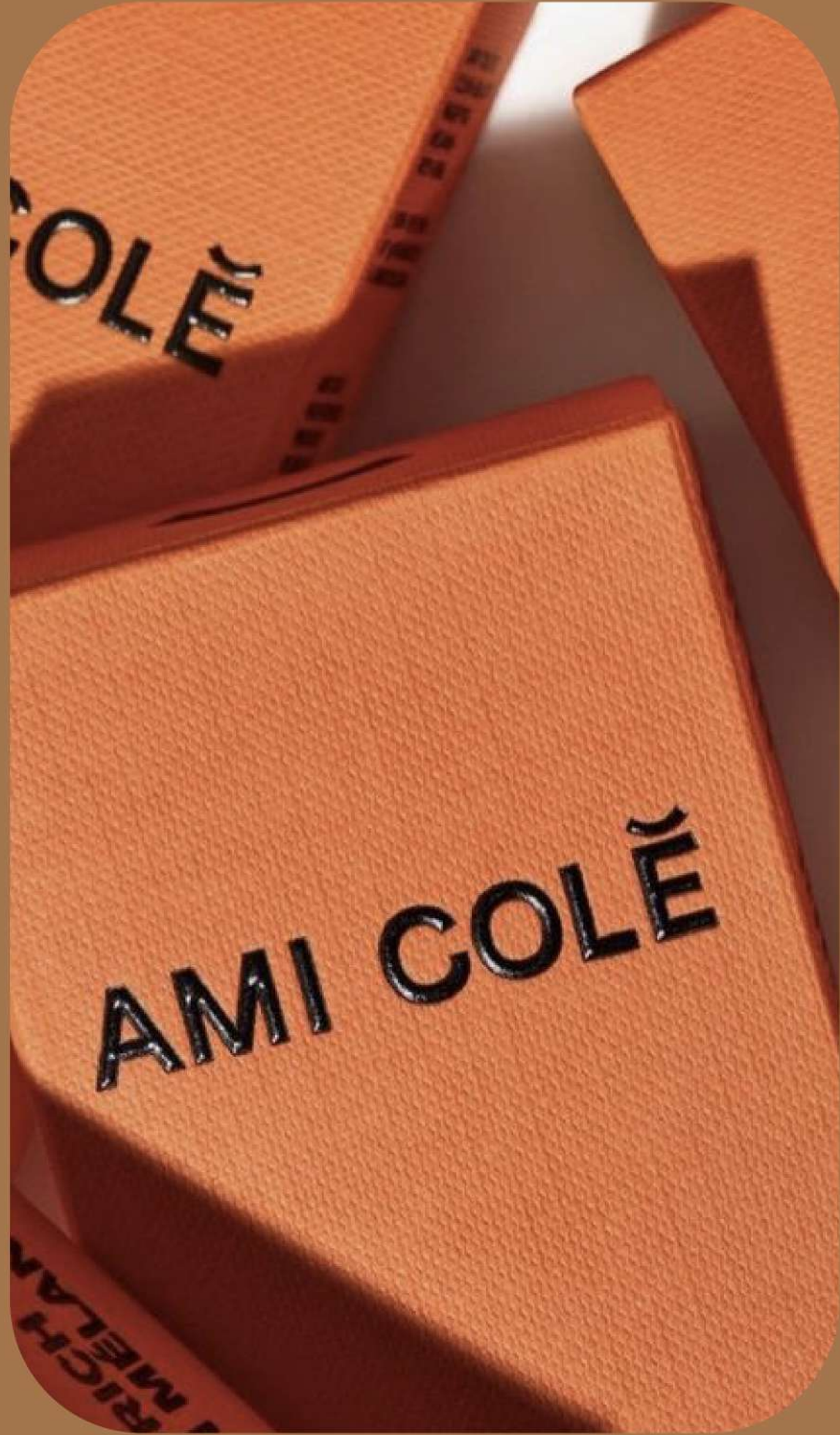
The logo was crafted by ingeniously blending the letter B into a box-like form, aiming to capture the essence of the packaging industry.



## ABOUT US

Welcome to our world of packaging excellence, where two decades of unwavering commitment to craftsmanship and innovation define us. With specialized expertise in crafting perfume boxes of all kinds, we have become a beacon of quality and creativity in the box manufacturing industry. From the robust elegance of our Hard Boxes to the unique charm of Cylinder Boxes, each creation is a testament to our dedication to precision and artistry. Our state-of-the-art facility is a hub of innovation, equipped with cutting-edge technology to stay ahead of industry trends. At the core of our success is a client-centric approach, ensuring that every project is a collaborative journey. Join us on this two-decade legacy, where every box is a masterpiece and every client is a valued partner. Welcome to a world where packaging is not just a container but a narrative, and our expertise is your assurance of excellence.





## OUR STORY

In the heart of the innovative packaging industry, a vision was born. In 2016, Al Basma came into existence, and from the very beginning, it was destined to be more than just another packaging manufacturer. With over two decades of collective experience in the industry, our founder was a visionary who has solid work ethics and an even more solid industry background which shaped the pillars on which the company's success flourishes upon.



 **OUR VISION**

is to become the leading company in the Middle East and not only in the Emirates

 **OUR MISSION**

is to innovate & incorporate everything new in the packaging industry by creating and designing our ideas 'in & out of the box

# OUR PRINTING METHODS

We use these techniques to create  
the art pieces that elevate our packaging

- Digital Printing
- Foil Printing
- Embossed printing
- Debossed printing
- UV-printing
- Screen printing
- Glass bottle printing



# OUR SERVICES

Manufacturing Services , Including but not limited to:

- Perfume boxes
- Sweet/Chocolate boxes
- Corporate/ Promotional boxes
- Customized boxes
- Cosmetics boxes
- Shopping/gift bags



# PERFUME BOXES

Unlocking Fragrance Elegance :

Our primary focus and specialty lie in our exquisite packaging solutions, particularly in the realm of perfume packaging. Each fragrance possesses its own distinct narrative, and it is our expertise to eloquently convey this story through our meticulously designed perfume boxes. Our passion lies in the transformation of scents into masterpieces, crafting an essence of allure and luxury that sets us apart as the foremost manufacturers of perfume boxes in the industry. We take pride in curating an experience that rivals the enchantment of the fragrances themselves. With an unwavering commitment to excellence and an acute attention to detail, we don't just create perfume boxes; we sculpt works of art that reflect the beauty and sophistication of your fragrances.



# RIGID BOXES ( HARD )

## Elevating Perfume Packaging

Discover the epitome of timeless sophistication in our Hard Boxes Section, where precision and durability combine to craft packaging that is both sturdy and stylish. These rigid boxes stand as a testament to our unwavering commitment to quality and the art of luxury packaging.



# SINGLE PERFUME BOXES

Unveiling Individual Elegance

In this specialized section, we bring forth Single Perfume Boxes that epitomize singular elegance, focusing on presenting individual fragrances with unrivaled sophistication.









# PERFUME SET BOXES

A Symphony of Fragrance Harmony

Enter the enchanting world of Perfume Set Boxes, where we elevate the presentation of fragrance collections to an art form. This section is devoted to crafting boxes that harmonize multiple perfumes into a symphony of elegance











# CYLINDER PERFUME BOXES

Unveiling Elegance in the Round

Welcome to our Cylinder Boxes Section, where innovation takes a circular form, and packaging transcends the traditional boundaries. This section is dedicated to crafting cylinder-shaped boxes that redefine elegance and create a distinctive visual identity for your perfumes.









# SOFT PERFUME BOXES

Unfolding Elegance in Versatility  
Step into the realm of Folding Type Boxes, where versatility meets elegance in packaging design. This section is dedicated to crafting soft and foldable boxes that seamlessly adapt to the contours of your perfumes, providing both flexibility and a touch of refined simplicity.







# LOUD & BUKHOOR BOXES

"Exquisite Packaging for Perfume Connoisseurs"

Here at Al Basma we understand the importance of presentation when it comes to Oud and Bukhoor. That's why we specialize in crafting exquisite boxes that enhance the allure of these precious scents. Our attention to detail and commitment to quality ensure that your packaging reflects the sophistication and craftsmanship of your products.

our boxes are customizable to meet your unique requirements. From sizes and shapes to finishes and materials, we offer a range of options to bring your vision to life. Our boxes provide the ideal environment for storing and transporting Oud and Bukhoor safely.





# COSMETICS BOXES

Where Beauty Meets Precision

Enter the realm of our Cosmetic Boxes Section, where packaging is not just a necessity but an art form. This section is meticulously designed to cater to the unique needs of cosmetic products, providing a harmonious blend of functionality, aesthetics, and precision.









# SWEET / CHOCOLATE BOXES

"Indulgence in Every Bite"

Our Sweets and Chocolate boxes are expertly manufactured with food-grade materials to ensure the freshness and quality of your confections. We use high-quality finishes that protect against moisture, light, and temperature variations, keeping your treats in perfect condition. Indulge your customers with chocolates and sweets that taste as magnificent as they look. Customization is key when it comes to packaging that truly reflects your brand. Our Sweets and Chocolate boxes are fully customizable, allowing you to showcase your unique identity and story. From innovative designs and vibrant colors to specialized finishes and personalized branding, we breathe life into your vision, making your packaging as irresistible as your treats.





# RECYCLABLE BOXES

"Sustainable Solutions for a Greener Future"

We understand the pressing need for businesses to minimize their environmental impact, and that's why we are proud to offer recyclable boxes as a smarter, greener alternative to traditional packaging. With our service, you can rest assured that your packaging will not contribute to the ever-growing waste problem.

Our recyclable boxes are designed to be durable, reliable, and versatile. Made from high-quality and eco-friendly materials, they are specifically custom crafted to protect your products during transit while minimizing their ecological footprint.





# CUSTOMIZED BOXES

"Your Imagination, Our Innovation"

In a world where uniqueness reigns supreme, we are the artisans of possibility, the creators of one-of-a-kind boxes that breathe life into your vision. Our specialty is turning your dreams into tangible, beautifully crafted realities. With creativity as our brush and precision as our canvas, we craft custom-made boxes that not only hold your treasures but become treasures in themselves. Step into the realm of bespoke packaging, where the extraordinary is standard, and your imagination knows no bounds. Let's shape your story, one custom box at a time.



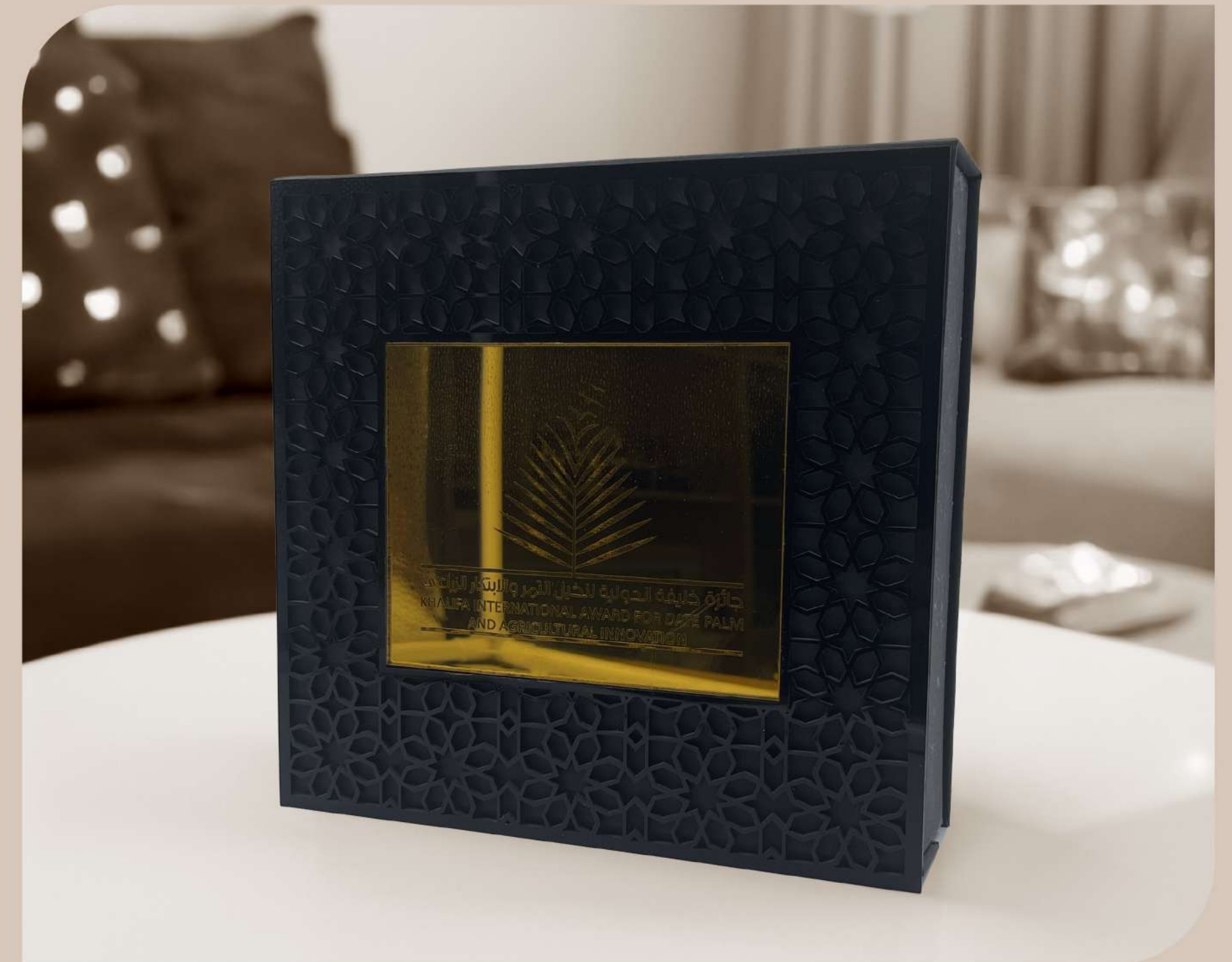




# CORPORATE & PROMOTIONAL BOXES

Gift boxes are the perfect packing materials for any product that are meant for special occasions. The reason, they offer more protection in an appealing way and have an added benefit of stacking nicely

We are only remains one of the leading manufacturers of gift boxes in UAE . We fabricate different eypes of gift boxes such as rectangular boxes,square,round and much more . Not only do we manufacture luxury gift boxes and PVC gift boxes, but we also add a personal touch to the gift boxes by catering custom option to the customers







# GLASS BOTTLE FOILING

Elevating Elegance Through Precision

Step into our Glass Printing Section, a realm where perfume bottles are transformed into exquisite canvases. With a focus on high-quality foiling, UV printing, and embossing, we bring a new dimension to the art of embellishing perfume bottles, ensuring that each one becomes a masterpiece in its own right.







# GIFT & SHOPPING BAGS

"Your One-Stop Haven for Custom Gift and Shopping Bags"

Step into a world where bags transcend mere carriers; they become works of art. We are your one-stop destination for all your custom bag needs, curating premium quality paper bags with a touch of enchantment. Our bags boast lamination options in glossy or matte finishes, the shimmering allure of spot UV, the tactile wonder of embossing, and a symphony of multi-color printing that brings your vision to life.







# QUALITY CONTROL

At Al Basma , quality control is at the heart of everything we do. Our rigorous quality control process encompasses every step of the packaging production process, from design to manufacturing and shipping. Here's a glimpse into our quality control process:



**Design:** Before we begin manufacturing a product, our design team reviews the specifications and creates detailed diagrams and samples. Our designers use state-of-the-art software and equipment to produce 3D renderings and virtual samples. These designs undergo a thorough quality control check to ensure that they meet the client's exact requirements.

**Materials:** We are meticulous in selecting and sourcing the materials we use in our packaging. We use only the highest quality materials that meet our stringent quality standards. Each material is carefully inspected and tested before it is used in production.

**Manufacturing:** Our manufacturing process is guided by a strict quality control protocol that emphasizes attention to detail and precision. Every packaging item undergoes a series of checks and tests throughout the manufacturing process to ensure its quality and consistency. Our experienced production team is skilled in identifying and correcting any issues proactively, ensuring that our products meet our clients' expectations.

**Inspection:** Once the products are manufactured, we conduct a final inspection to ensure that they meet the highest quality standards. Our quality control team thoroughly inspects every packaging item for any imperfections or defects. Any issues are immediately identified, and corrective actions are taken to ensure that only flawless products are shipped to our clients.

**Shipping:** Finally, our quality control team conducts a final inspection before packaging items are shipped. This inspection confirms that all items are accounted for, appropriately packed, and meet our quality standards.

Our commitment to quality control is a testament to our unwavering dedication to our clients' satisfaction.

## FOUNDER'S SPEECH

As the founder of Al Basma, I stand before you with immense pride and gratitude. I embarked on this journey with a profound passion for the art of packaging, fueled by over two decades of collective experience in this industry. But Al Basma is not just a business venture; it's a mission, a dream, and a testament to what is possible when creativity meets unwavering dedication. I believe that 70% of any product's success & impact is from the packaging of the product and the unboxing experience so here at all Basma we will shape that percentage into reality and make your customers fall in love with your product/service.

I would like to extend my gratitude to every member of our workforce, you're the pillars of our success.

*At Kharraji, Luhair.*

## CONTACTS

 +971502355441

 +97165384425

 ALJurf 1- AJMAN- United Arab Emirates

 [albasmagiftboxes@gmail.com](mailto:albasmagiftboxes@gmail.com)

 [www.albasmaboxes.com](http://www.albasmaboxes.com)