

The cover features a dynamic geometric design with diagonal stripes in dark teal, light grey, and white. A horizontal yellow band is positioned behind the year text.

2021-22

**ANNUAL
REPORT**

**SWATHI MAHILA
SANGHA**

Women Lead Community Institution

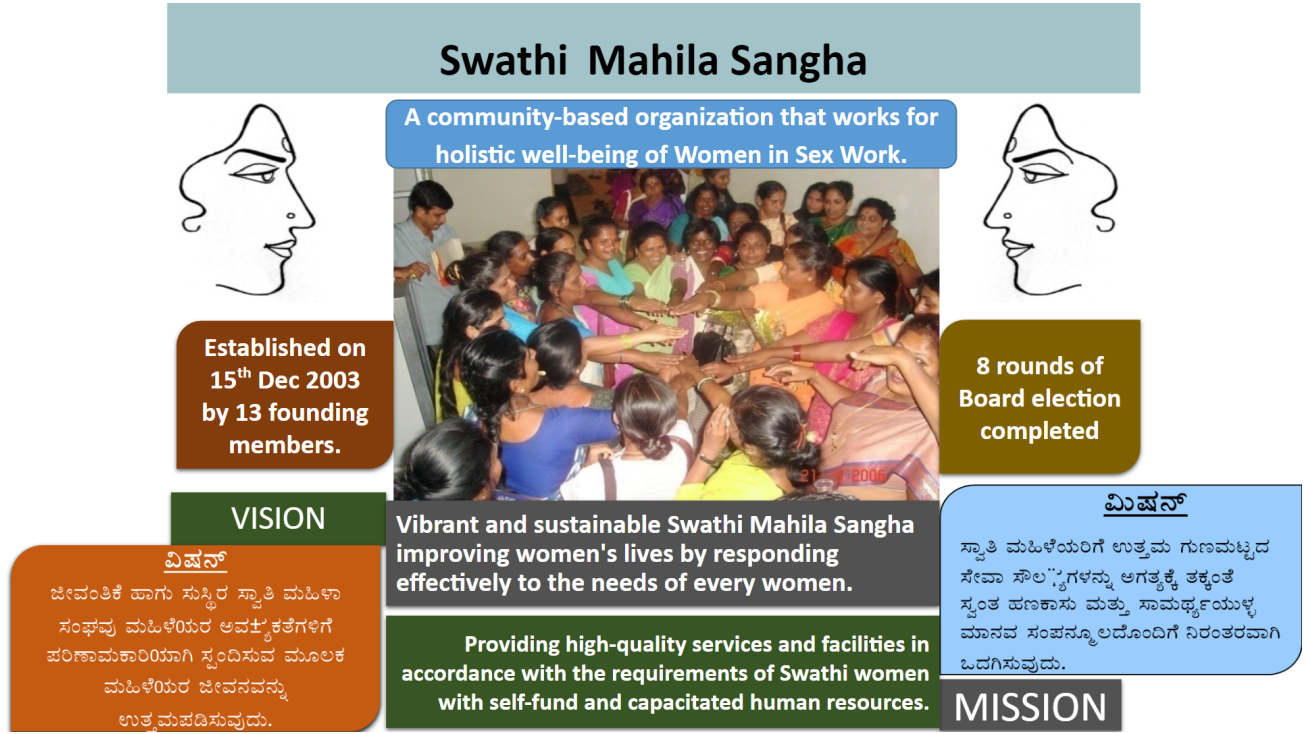
Table of Contents

<i>Abbreviations</i>	<i>3</i>
<i>Swathi Mahila Sangha the Organization</i>	<i>4</i>
<i>The Year In Review</i>	<i>7</i>
<i>1.Pragati Empowering lives</i>	<i>7</i>
1.1 HIV services	7
1.2 Social Protection:	8
1.3 Safety, Security and Justice	9
1.4 Financial Security	10
<i>2.Institutional Development Services</i>	<i>10</i>
2.1 Institutional and Individual Capacities Developed:	10
2.2 Resource Mobilization:	10
<i>Swathi Mahila Sangha Human Resources:</i>	<i>11</i>
<i>Governance and Accountability</i>	<i>12</i>
<i>Financials:</i>	<i>13</i>

Abbreviations:

AIDS	Acquired ImmunoDeficiency Syndrome
ART	Antiretroviral Therapy
BMGF	Bill and Melinda Gates Foundation
BPL	Below Poverty Line
CBO	Community Based Organization
CEO	Chief Executive Officer
CIG	Common Interest Group
CMS	Catalyst Management Services
FD	Fixed Deposit
FSW	Female Sex Worker
HIV	Human Immunodeficiency Virus
HR	Human Resource
KHPT	Karnataka Health Promotion Trust
M&E	Monitoring and Evaluation
MARPs	Most At-Risk Populations
MSM	Men who have Sex with Men
NACP IV	National AIDS Control Programme IV
NCDs	Non-Communicable Diseases
NGO	Non-Governmental Organization
NRHM	National Rural Health Mission
PLHIV	Persons Living With HIV
PPTCT	Prevention of Parent to Child Transmission
QRM	Quarterly Review Meeting
RD	Recurring Deposit
SB	Savings Bank
SMS	Swathi Mahila Sangha
SJ	Swathi Jyothi Cooperative
SNS	Swathi Nyaya Sanjeevini
SP	Social Protection
SRHR	Sexual and Reproductive Health Rights
STI	Sexually Transmitted Infections
TG	Transgender
TI	Targeted Intervention
WCD	Women and Child Development Department
WDF	Women's Development Fund
WSW	Women in Sex Work

SWATHI MAHILA SANGHA- An Organization connecting hearts together

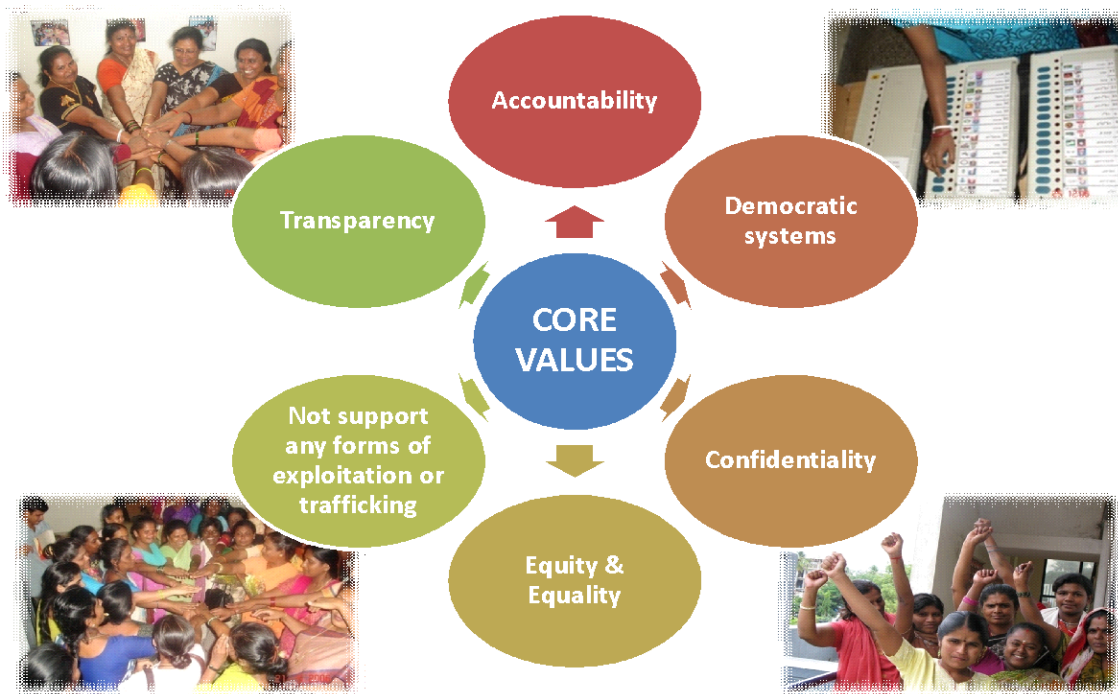


BACKGROUND:

The programmes which addressed the wellbeing of women in sex work were limited in between 1994-2003. In order to curb the emerging HIV infection, a few motivated NGO's started the basic initiatives which mainly focused on field work like HIV ad STI prevention strategies, educating the sex workers on various modes of transmission, referral for STI treatments and Condom Promotion. But, these programmes lacked community participation and didn't account the factors which made women more vulnerable in sex work.

Inspired from the movements in Bangladesh and Sonagchi, towards sexual and human rights of sex workers, a Community organization called **Swathi Mahila Sangha(SMS)** was borne/formed as a collective effort from by a group of sex workers in collaboration with a local NGO on 15th December 2003. SMS is legally registered under Karnataka Societies Act.

Swathi Mahila Sangha - Core Values



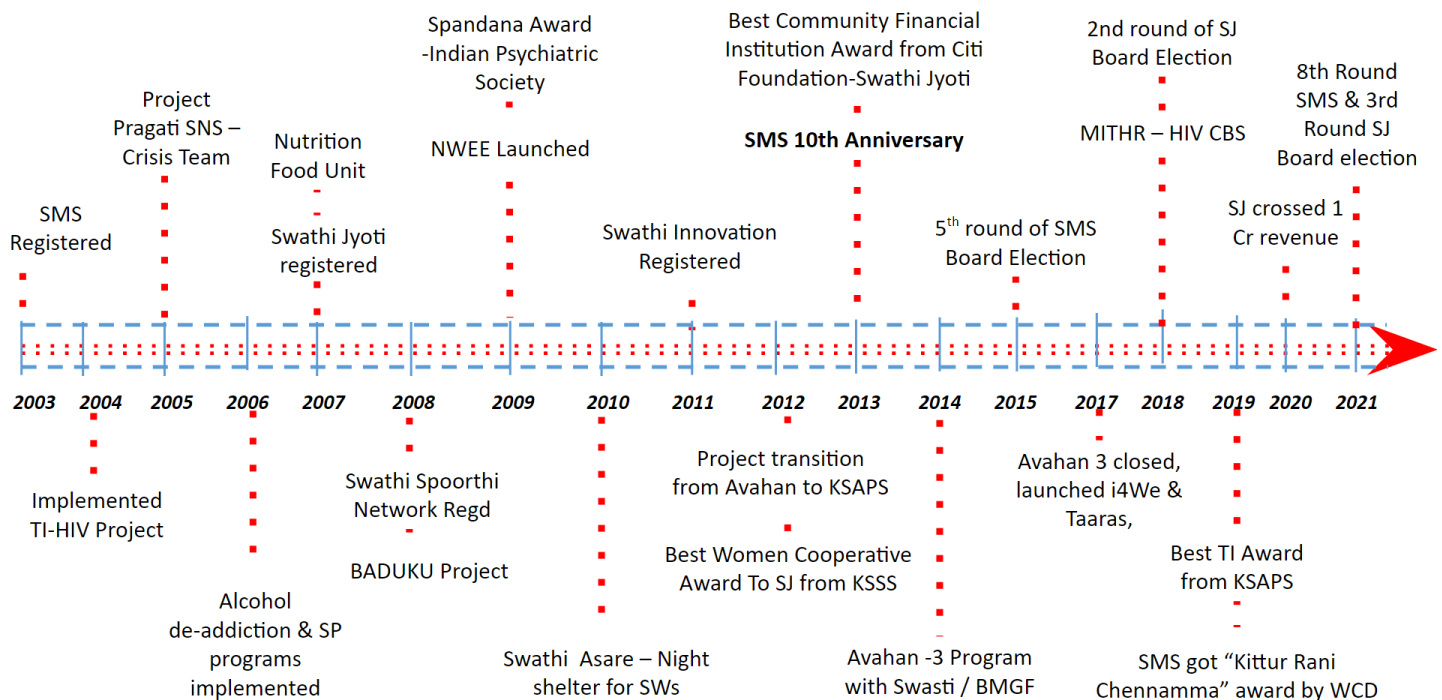
- **Democratic Systems:** Democracy refers to by, for and of the people. SMS involves the formation of a central board constituting of key leaders who are elected through elections. The elected leaders usually belong to the same community as key population with the view that they would understand the requisites of the community in a wider aspect.
- **Confidentiality:** As SMS constitutes the membership of WSW's the information (like Personal details etc.) is kept highly confidential and not disclosed.
- **Accountability and Transparency:** Income invested and generated through SMS is accountable and maintained up to date by proper audit. The audit reports are accessible to all making the SMS financial system highly transparent.
- Due to the persistent stigma towards WSW's in the society they are being looked down. SMS was established purely with the rationale of catering the needs and requirements of WSW's. It's usual for an organization to get exploited if they strive to extend their support towards the well being of WSW's. They are mistaken for their involvement in women exploitation and trafficking cases.
- **Equity and Equality:** SMS ensures to follow the principle of Equity and Equality through which the affected and most vulnerable get the maximum support and aid.

VISION AND MISSION OF SWATHI MAHILA SANGHA:

VISION: “Vibrant and sustainable Swathi Mahila Sangha improving women's lives by responding effectively to the needs of every woman”.

MISSION: “Providing high-quality services and facilities in accordance with the requirements of Swathi women with self-fund and capacitated human resources”.

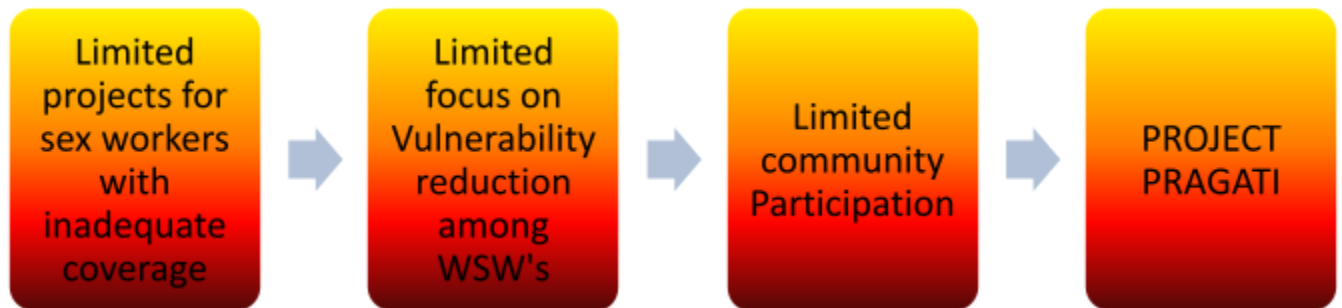
SMS Journey



PROGRAMMES BY SMS

- Swathi Mahila Sangha's predominantly works in Bangalore which, according to the geographical mapping done by Swasti in 2005, had a population of 0.25 million women in sex work.
- The first step towards this work was taken by the implementation of targeted interventions with the help of Samraksha from 2004.

1. Evolution of Project Pragati



- Prior to 2004, the projects related with sex workers were scattered and had inadequate coverage. They focused mainly on risk reduction rather than vulnerability reduction. The understanding about the typology was limited and with less or no community participation.
- The HRG mapping estimates of 2004 witnessed the immediate need to completely relook at the strategies.
- During inception it was seen that the coverage of women in sex work in Bangalore was about 3,500 annually and treating around 200 women for STI per year.

Bangalore Sexwork Scenario

Bangalore City is divided into 7 Zones

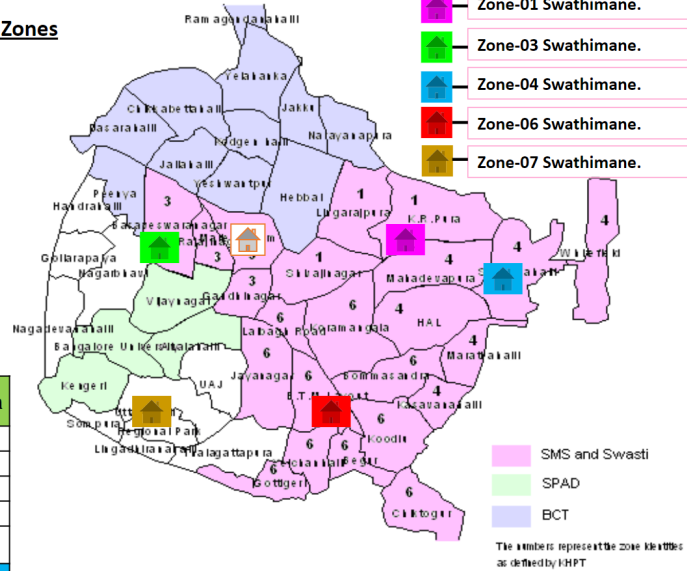
Swathi Mahila Sangha – 5 TIs

Vijaya Mahila Sangha – 1 TI

Jyothi Mahila Sangha – 1 TI

BCT – 1 TI (NGO)

SPAD – 1 TI (NGO)



- Initially it was planned to cover 6000 population in the allotted five zones but later increased to 12,941 women (As per HRG Mapping Estimation).

To address the situation, Swasti-Health Resource Center in partnership with Swathi Mahila Sangha (SMS) co- created the Project **Pragati** which was an empowerment initiative for women in sex work in Bangalore.



Combination Programming



- This project has reached over 13,870 WSW's and has provided STI treatment and referrals to over 13,000 WSW's. Around 0.20 M condom are distributed every month.
- The partnership between SMS, Swasti and KHPT is based on mutual respect, equality and tolerance and involves them in designing the project and implementation.
- Project Pragati is staffed by over 350 team members, more than 80% of which are from the Key Population. The positions range from field peer educators (PE) to field operations manager. This project covers three-quarters of Bangalore (5 Zones) and works in 515 sex work sites.



Chetana means consciousness and refers to the awakening of women under the hold of alcohol.

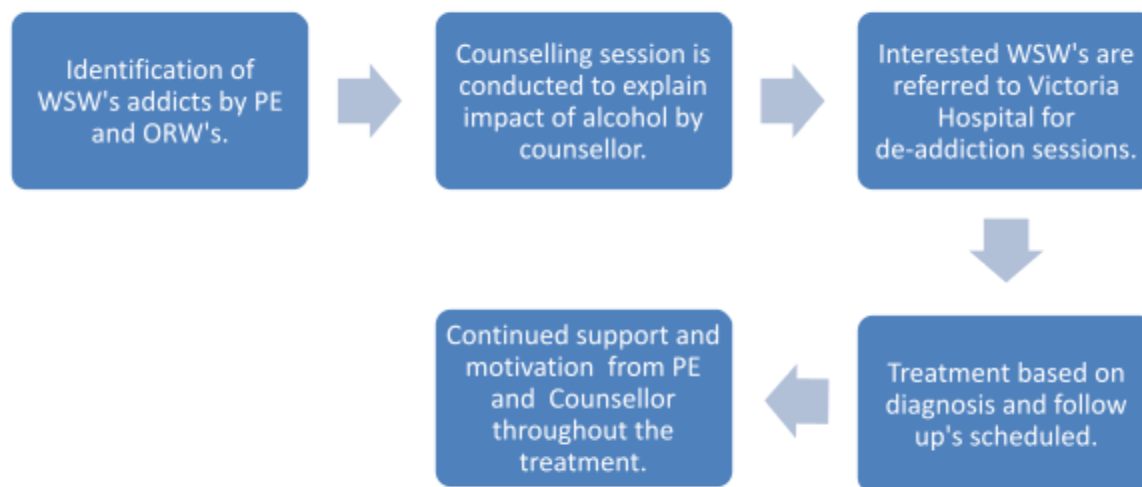
SWATHI CHETANA-Support for De-addiction

While interacting with women in sex work on HIV prevention, it became quite evident that dependence on alcohol actually acted as a vulnerable cause for increasing the risks of HIV, abuse and harassment among WSW's. This was corroborated by evidence from other studies.

Several FGD's were conducted to understand the depth of condition related to alcohol addiction. Considering the issues, the idea of developing an initiative called "Swathi Chetana" was borne.

The objective was to make women who consume alcohol, especially during work, more independent on both social and economic front. The WSW's should be able to stress on condom usage, negotiate payment from clients and able to protect themselves from violence and harassment.

THE PROCESS



STRATEGIES

- The strategy which assisted in making the endeavour a success was working with the key leaders among WSW. When these leaders shared their experience they served as role models for many others WSW's and paved way for many others to follow.
- Regular campaigns are conducted to create and maintain awareness.
- The Swathi Chetana team has received training and support from NIMHANS, which has allowed them to continue their work, despite the many challenges.

The Indian Psychiatric Society - Karnataka Branch has conferred the Spandana Award 2009 for significant service in the area of de-addiction on Swathi Mahila Sangha and Swasti. The award was in recognition of their work on Alcohol de-addiction as part of Pragati project. Over 1507 women have undergone alcohol de-addiction treatment so far.

Prema, 45 years old WSW, was an alcohol addict. In order to fulfil her craving, she would not bother who her clients were and whether they used condom or not. As a result, she would usually be intoxicated during sexual encounters with clients. Swathi Chetana proved to be a life changing experience for her. Being a leader at Pragati she resolved to lead the way. Today she is a Coordinator managing a drop in centre, has saved money and got her two daughters married. She beams with pride when women follow her path and become free of the dependence and resume healthy lives.

SWATHI SPOORTHY

- On 16th June 2009, SMS and Swasti together launched Swathi Spoorthi (re-energizing in kannada), a programme for women in sex work who are HIV positive to improve their quality of life and their family's through collective and cooperative approach.
- The Swathi Spoorthi Network operates largely in the district of Bangalore Urban and has limited operation in Bangalore Rural and Ramanagara district.
- The Swathi Spoorthi Network comprising of PLHIV, works at each of the Swathi Mane's to motivate women with HIV to visit the ICTC's.
- Those who disclose their status are referred to different support services and also become part of the support group, which meets regularly.
- The Swathi Spoorthi team also works with the larger community of women in sex work to help them understand the issues of HIV positive women in sex work. This helps in reducing the stigma and discrimination within the community.
- Its impact has largely been through establishing institutional linkages with
 - Care and support centers
 - ART centers
 - Residential facilities for women and children
 - Government departments for social entitlements and other facilities
 - HIV Positive networks of CBOs and NGOs
 - TB treatment centers
 - Nutrition support centers
 - Child Welfare organizations
 - Social welfare organizations providing financial support.

SWATHI SAVI- SUPPLEMENTARY NUTRITION

- Proper and adequate nutrition, along with medical treatment, plays a very important role in maintaining good health as it improves the immunity of the body, helps in prevention of secondary infections; energizes the body, and maintains the CD-4 count in the body.
- Recognizing this need, Pragati project decided to take up preparation and distribution of a nutrition supplement – Swathi Savi. A production unit for Swathi Savi, a nutritional supplement in powder form, was started on 26 June, 2007.
- The powder has undergone testing at the Central Food Technological Research Institute (CFTRI), Mysore and the results reveal that the supplement provides 429 kilocalories per 100 grams.
- An average of 400 kilograms of nutritional food is produced and sold every month. About 60% of the supplement is distributed or sold to PLHIV either directly through the Pragati project or through the network for positive persons.

SWATHI NYAYA SANJEEVINI- A violence redressal mechanism

- Women in sex work are easy targets for violence and harassment. They are vulnerable to violence because they are looked down upon by society.
- Under this program, we aim at the prevention and condemnation of any form of social abuse or discrimination. We believe that no group of individuals deserves to be mistreated in society and thus, work to empower women in sex work.
- Sex workers have an equal right and need to live good, respectable and decent lives. Discrimination by government officials, especially the police, and society at large prevents these women from gaining adequate access to health care, entitlements etc. to secure their lives. Violence and harassment increase the vulnerability of women in sex work, affecting their physical and mental well-being.
- Our goal is to empower and mobilize women in sex work to tackle any form of violence and also bring perpetrators of violence to justice. The trauma caused by these types of violence is deep and unless they are given justice, these women will be unable to bring progress in their lives.
- SNS was, thus, formed in order to fight against **stigma, discrimination, harassment and violence**, respond to crisis and bring justice to sex workers. SNS proactively takes context-specific action based on the severity of the violence. With the help of Swasti and other organizations, local government officials and secondary stakeholders, **7932 cases have been responded to till date.**

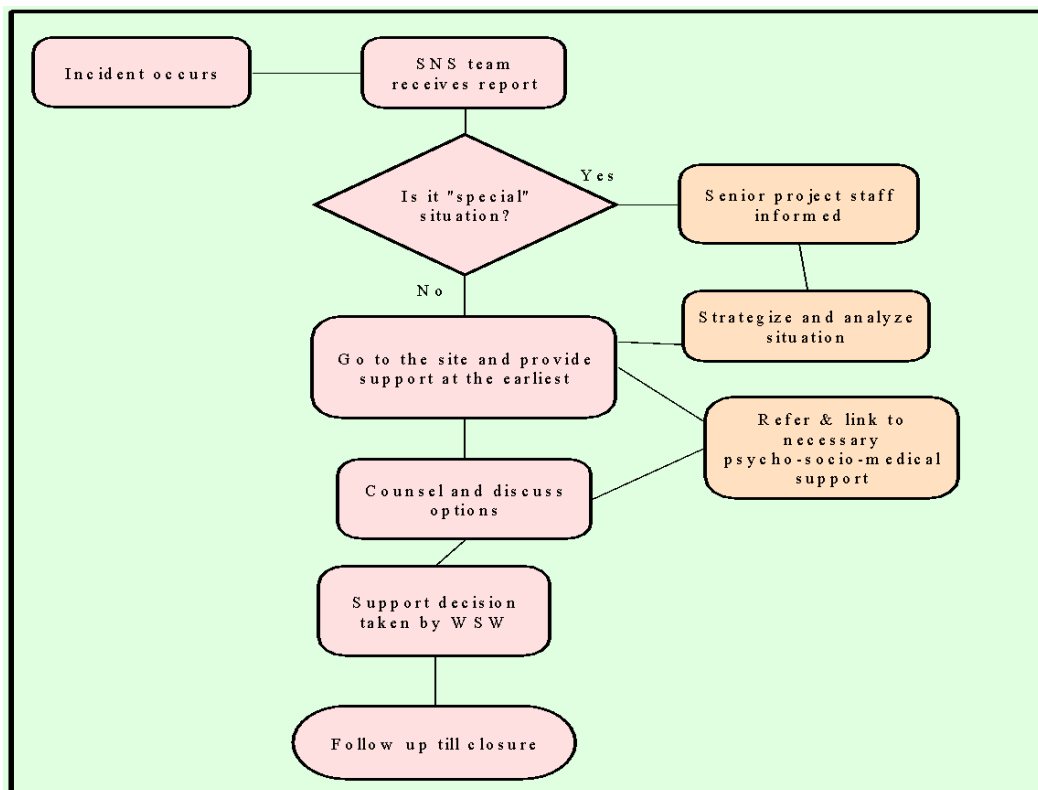
OBJECTIVES OF SNS

Respond to the atrocities perpetrated against and the trafficking of sex workers.

To provide support to women who have faced violence and educate them on their rights.

Support of secondary stakeholders through advocacy and sensitization.

PROCESS OF SNS



- Any support required by WSW's irrespective of type (mental, physical or social) harassment and violence is addressed by the SNS team.
- Those women who face violence are counselled, provided alternative methods to resolve issues and are also referred to other organisations for serving their needs and requirements.
- Networking with other CO's which tackle violence and trafficking of women in order to spread awareness on these issues and come up with constructive programs .
- Sensatization of secondary stakeholders(eg.police,etc)

SWATHI NYAYA SANJEEVINI'S STRATEGIES:

SNS uses the following strategies to provide effective services to women:

1. Top 'A' site and violence watch committee
2. Secondary stakeholders' management
3. 24/7 response team

SWATHI JYOTHI – Financial Inclusion

Financial compulsions often drive women into sex work. The financial quagmire worsens if women do not know how to manage money or do not have access to financial management mechanisms. Women are offered more money for sex without condoms and financial insecurity could compel them to take on such offers, thereby increasing their risk of contracting HIV. In addition, the volume of clients and the amount that women are able to charge is also dependent on financial security.

Some money issues faced by women in sex work include:

- Keeping money safe from husbands/partners or rowdies
- Inability to access mainstream financial organisations due to the lack of address or identity documents
- High interest rate for loans from non-banking financial institutions

Recognising the need for saving and credit, self-help groups were started within Pragati project. In a matter of months, it became evident that the self-help group model was not suitable for the women in sex work in Bangalore who were largely street based.

- Swathi Jyothi Women Souharda Multipurpose Cooperative Society (Micro Finance Institute) was established in 2007 by and for the people in sex work for providing financial security in support with Swathi Mahila Sangha.

- Savings products were offered from December 2007 and credit services started in March 2008. The products offered are:
 - Saving Bank Account – Swathi Sarala
 - Recurring Deposit – Swathi RD
 - Term Group Loan – Swathi Swabhimana

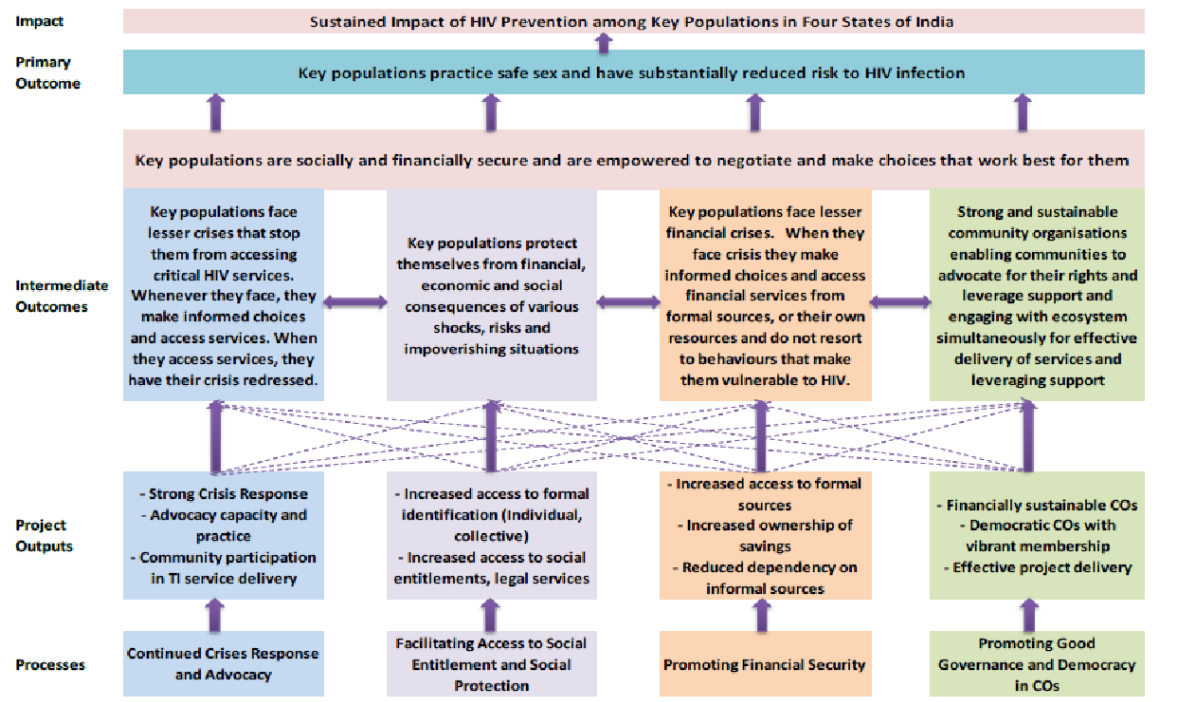
Products added post 2010

- Fixed Deposit
 - Goal oriented RD for Education, Gold and Marriage (Swarna, Vidya & Kalyana)
 - SWF loan
 - Unnati RD loan
- **Salient features of Swathi Jyothi:**
 - Managed and owned by women in sex work; services provided with respect, dignity and trust.
 - Provides a safe and secure place for savings.
 - Provides easy and cost effective credit; no collateral for loans since guarantee is provided by common interest group (CIG)¹
 - Provide products and services based on needs of women in sex work.
- This micro finance scheme was initiated after considering the limited access to savings and credit facilities by WSW's which made them more vulnerable to exploitation and harassment and pushed them into further poverty.
- The strategies employed for approaching and motivating WSW's involve conducting site camps and financial literacy training. Camps are conducted close to their places which eases mobilization and accessibility.
- The Community is briefed about the rationale behind the schemes (Savings account, RD, FD, Loans etc) and encouraged to avail these facilities.
- The reporting year from Apr 2015 to Mar 2016 had seen progress in the savings Swathi Jyothi in all products (Savings Bank, Recurring Deposit and Fixed Deposit), achieved good progress in loan repayment of FY 2014-15 and 2015-16 loans (Group loan, Individual loan and FD Loan).

¹ CIG - is an abbreviation for Common Interest group which is a three member group formed for the purpose of availing loans. Each member acts a guarantor for the other members in the group for taking a loan. There is no other surety required to avail a loan.

AVAHAN-III

THEORY OF CHANGE



The AVAHAN-III initiatives works on 4 major pillars:

1. Enhanced Crisis Response
2. Financial Security
3. Social Protection
4. Organization Development

The risk reduction strategy is supported by Targeted Interventions and SACS while Vulnerability reduction is formulated by AVAHAN-III programme.

Pragati-Empowering Lives

1.1 HIV SERVICES

- SMS is receiving a grant from NACO-KSAPS to implement the Targeted Intervention Programme in 5 zones of Bangalore Urban.
- Organization has reached nearly 14067 women and provided information about
 1. STI and HIV
 2. Usage of Condoms in preventing STI and HIV along with distribution of free condoms.
 3. Referring and Linking PLHIV to ART clinics for Counseling, Testing and Treatment services.

Sl no	Indicators	20-21
1	No of Areas	25
2	No fo Sites	515
3	Estimation	12,941
4	Total FSW covered	13870
4.1	Home Base	12491
4.2	Street	1341
4.3	Brothel	38
5	STI treatment	145
6	Condom distribution	2483222
7	RMC	47180
8	HIV test	21672
9	Syphilis test	21958
10	Syphilis positive	1

There are 90% of the members operate from home and 9.6% from the street and remaining 0.4% are from brothels.

Over 47 thousand episodes have been treated for STI and 2.4 million condoms have been distributed for free. SMS has linkages with over 20 ICTCs and 5 ARV centers to facilitate HIV testing and ARV treatment, because of the effective utilization of ICTCs over 21 thousand HIV tests and 21 thousand syphilis tests have been done.

1.2 SOCIAL PROTECTION

- Due to persistent Stigmatization and Discrimination towards WSW's in the society it poses a challenge for them to entitle the basic rights as a citizen.
- Low level of awareness and Complicated process makes it difficult for the WSW's to access the Civic Identity cards like Voter Id, Aadhar Card, Ration Card and other social security schemes like Widow pension, Subsidy loans, Children Education Loans, Housing Loans etc.
- To facilitate social protection services Swathi Mahila Sangha in support with Swasti has established a Unified Help Desk – UHD at their 5 Drop in Centers – DIC's.
- The UHDF's understand the basic needs of WSW's by reviewing their eligibility, sensitizing them on available schemes and benefits, support them to fill the application forms, facilitating them for submission to concerned officials, departments and follow-up until they receive the service.
- 5 UHD facilitators exclusively working towards generating demand, compiling demand applications, and forming networks with concerned departments and service providers.

Sl no	Social Protection	21-22
1	Applied	1376
2	Accessed	1178

Using the above listed strategy over 1376 applications have been submitted to various Govt Dept and in which 1178 schemes have been availed.

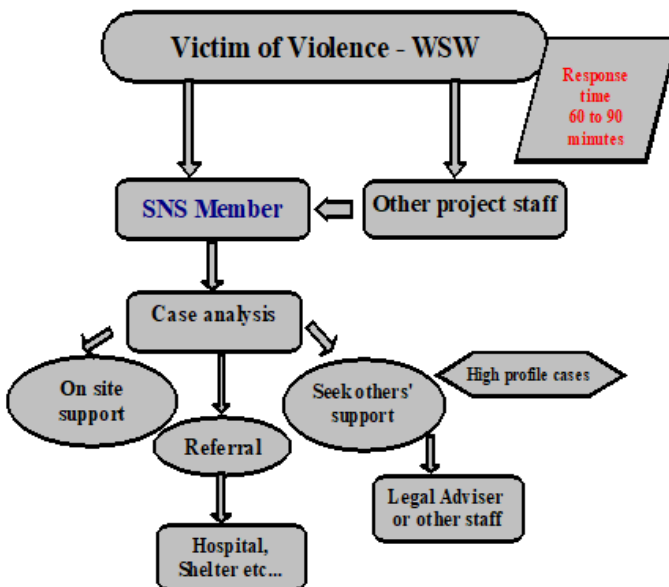
1.3 SAFETY, SECURITY AND JUSTICE

THREE TIER STRATEGY

Tier 1 - VIOLENCE WATCH COMMITTEE

- As the name suggests, a group is formed within each Top A site to “watch” for triggers of abuse.
- **Top ‘A’ Site:** Sites which experience more than 3 violence cases occurring per month are designated as ‘Top A’ sites.
- The members of the committee comprises of the peer educator, outreach worker and secondary stakeholders (such as shop keeper, auto drivers etc.)
- The committee informs the SNS team in case of any incident that occurs in the area or any situation that could lead to abuse and harassment. The committee meets regularly to discuss the status of cases and discuss precautionary measures.
- As on March 2022, 14 sites were identified as ‘Top A’ sites.

Tier 2– 24X7 HELPLINE



Key Strategies

- Offer 24-hour service with 6 help-line numbers
- Community led crisis response system
- Implement proactive and reactive measures
- Provide psycho-social support to victims
- Manage SSH and form Violence Watch Committee
- Foster networking and partnerships

- **Para Legal Volunteers:** These Volunteers are trained by Legal Service Authority. They respond to the situation, advocate the stakeholders along with referrals and creating linkages. Till now 80 PLV's have been identified.
- As the name implies, this service is available 24*7 with no holidays.
- Identified PLV's and Champions will reach the victim's spot and provide required medical and legal support within 60 minutes.

TIER 3– LEGAL SERVICE AUTHORITY / LEGAL AID CELL

- It comprises of Police Dept, WCD Dept, Human Rights Commission, and Women Commissioner for offering protection services. The victims can directly contact and approach them for required support.
- If required, LSA provides Lawyers free of cost to support victims for defending cases in court.
- **Awareness and Sensitization:** Women in sex work face harassment from different sections of society like auto drivers, rowdies, pimps, police, clients etc.
 - Sensitizing these groups towards WSW's and describing the obstacles faced by the community is an important aspect of managing violence and harassment.
 - Regular workshops are conducted for police personnel while clients, auto drivers are managed by outreach workers regularly.
- **Screening and Psychosocial Counseling:** WSW's are counseled through counselors at SMS centers through evaluation and needs assessment.
- **Referral to other specialized services** such as NIMHANS, Lawyers, Doctors, Police Stations are made if required after needs assessment.
 - The presence of a lawyer in the team makes the intervention more effective and efficient response mechanism.
- **Improved Quality of Life:** This involves identifying long term development needs, generating demand, and facilitating access to government or private initiatives to address the same.
 - It includes personalized support for de-addiction, action against trafficking, enhanced control over resources through savings and credit, and creating options for alternative and diversified livelihoods.

- **Capacity Building:** This involves ensuring women have improved capacities to address issues that threaten their lives and livelihoods, strengthening group action on issues and acceptance and sustainability of the project through development of a strong collective.

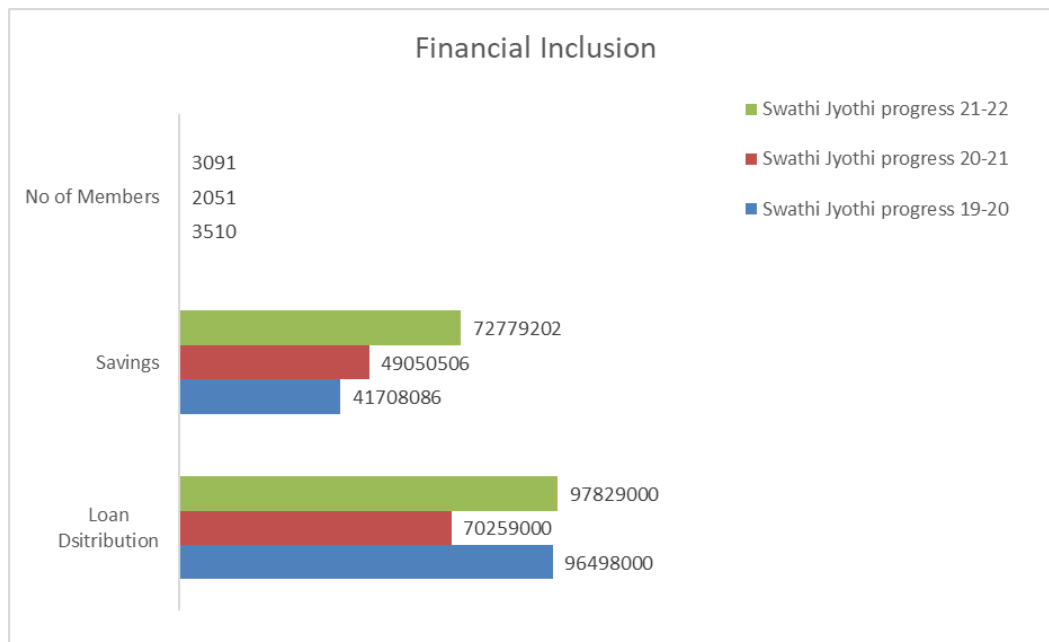
During the reporting year 435 violence cases have been reported and responded by the organization, since beginning over 8547 cases of physical, psychological, sexual, and financial cases are reported and responded.

SWATHI SPOORTHY

- There is a HIV prevalence of 7.8% among women in sex work in Bangalore and within Pragati's coverage area; there are an estimated 976 women in sex work living with HIV. It is these women that Spoorthi seeks to support. During the reporting year 5 new women living with HIV are identified and Currently over 317 WLHIV are part of the Spoorthi program.
- Org Distribute free nutritional supplement "Swathi Savi" to all the 168 women every month and provides counselling support through our in house counsellors.
- Facilitating Dhanashri the subsidy loan scheme from WCD, this year 54 women have received 21.50 lakh loan to set up micro enterprises for the livelihood.

Financial Inclusion

SWATHI JYOTHI CO-OPERATIVE



Swathi Jyothi is growing by leaps and bounds as the membership count keep on progressing year after year, which is sign of acceptance from the community. It currently has over 9,352 women as shareholders. On the financial side, it has mobilized over 72 million rupees as savings and 97 million rupees is given as credit to its members.

- 2,948 women have undergone financial literacy training during the year 2021-22.

Institutional Development Services

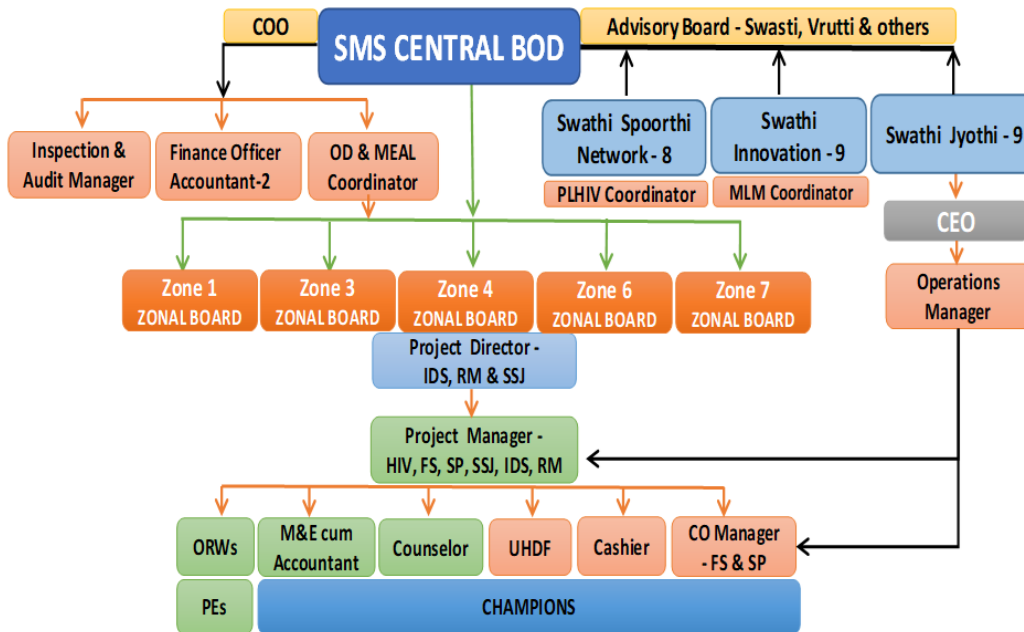
Institutional and Individual Capacities Developed:

- The Organization has over 85 governing and thematic community leaders, who are the founding members with over 17 years of experience, middle level leaders with over 10 years of experience and new or emerging leaders with limited or no experience but willing to take up the responsibility to serve to wellbeing of their own community and their own institution.
- Internal leadership development Programme helped to identify, nurture and mentor the leaders pursue substantial role within the organization.
- During the reporting period, over 85 members have undergone LDP training and over 560 field level champions received training.

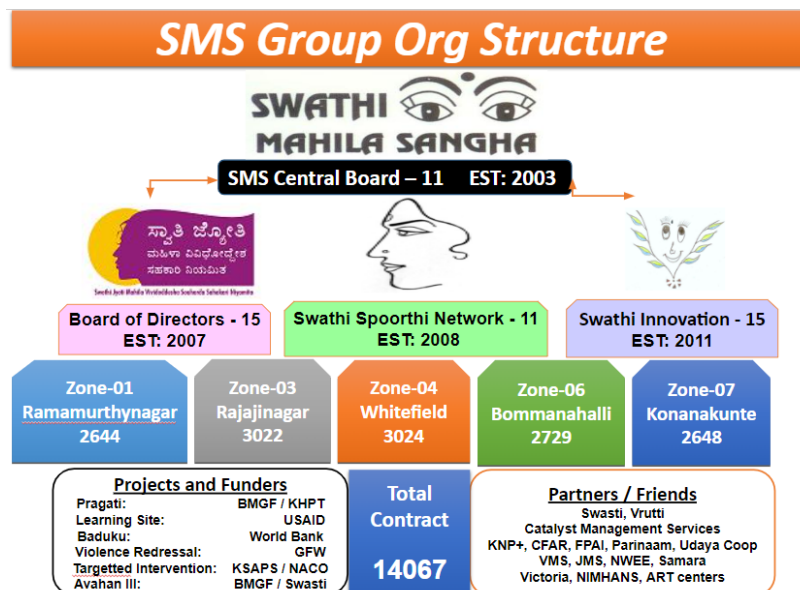
Human Resources:

In Swathi Mahila Sangha ad its allied Organization around 70 full time staffs and 157 part time staffs working to achieve the Organization Vision.

Staffing Structure



Governance and Accountability:

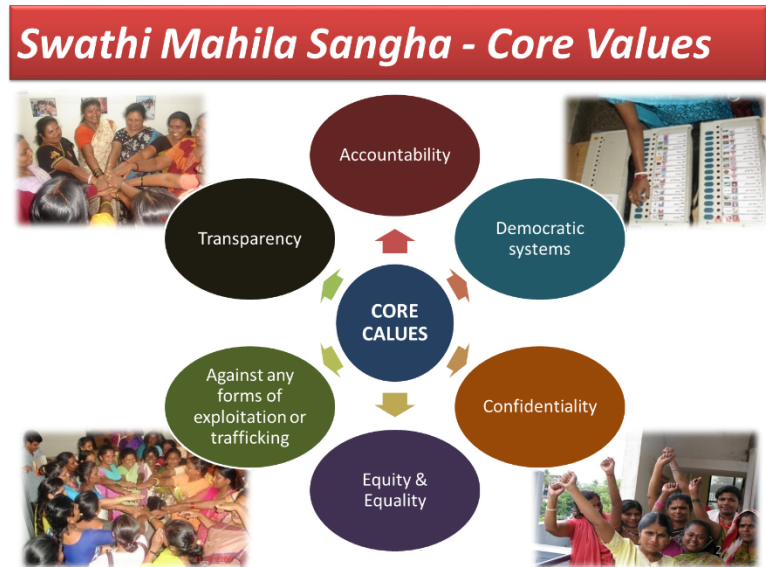


- Following diagram explains the SMS and its allied Organization structure that designs to facilitate the various needs of women in sex work and their children.

- As SMS working in metropolitan city, it has divided its area of operation into five zones to facilitate the services to every women across 400+ sex work sites.
- Swathi Mahila Sangha is working on core principles and values that are leading to community driven and sustained. SMS is working with various donors, Govt Departments, Civil Society Organization, Education Institutions, Individuals and General Public to uphold the dignity of collective of women in sex work.

Resource Mobilization:

- The projects planned are highly focused and are programmed in such a way that they are closely address the specific needs of the community.
- With a surge in the number of projects, the availability of funds and approval of grants gets challenging. As the requirement of the community increases the numbers of grants are coming down.
- To address this situation Organization has decided to mobilize resources in the form of money, materials and services locally.
- As part of the RM programme, Organization has mobilized around 0.9 million through its members as membership fee and 6.4 million from local donors. The amount has been utilized to providing nutrition supplement and medical expenses of PLHIV, HR and administration expenses.



Leadership Development:

- Due to the persistent stigma towards the WSW's prevailing in the society, they are often not given the due recognition as others.
- SMS is a Community organization which basically works for the well-being of WSW. The leaders are chosen from the same community as key population.
- In order to reach out the beneficiaries, it requires large number of people who can manage the organization.

Other program activities (2021-22):

1. Ration kits:

Sex work in India is not legalised in India and there is a lot of taboo attached to this profession. Due to this sex workers are either not recognised by Govt. or they could openly share about the profession. Even though Govt. agencies were distributing COVID relief materials often sex workers are neglected and they cant even tell to friends and family that why their income stopped all of a sudden. This led to starvation at home and they were in great difficulties. SMS team started mobilizing ration kits from various donors and the team prioritised street-based, single earning member families, sex workers living with HIV for ration kit distribution and it was extended to other people also. Each ration kit had items people use it on day to day basis that could meet the needs of a sex worker for a month's time.

Even though lockdown eased after some time, the sex workers profession was badly hit. They can not practice their work without physical contact and fear of COVID impacted the clients who were coming to them. Govt. restricted public gatherings, crowding at public places which took away their soliciting opportunities. So agonies of sex workers continued even after lockdown released. So the ration kit demand by sex workers is pertinent even today.

SMS team is ever grateful to the following donors who responded to our request and gave us the ration kits either directly or reimbursed the cost:

- Being Social
- Team Bounce
- Azim premji Foundation
- Big Basket
- Ramachandra (individual donors)
- Syed Ebrahim (individual donors)
- KHPT
- Give India
- GFATM



2. Personal Protection gears for COVID warriors and communities and provision of home quarantine kit:

When the whole of the country was locked down and people confined themselves to homes, COVID warriors of SMS were on the streets. They were busy getting life-saving medicines like Antiretroviral Therapy medicines, TB medicines from hospitals and were distributed to community members who were in the containment zone or to community members who are from other parts of the country stranded in Bangalore. SMS got necessary approval from competent authorities to move within the city to support community members to support them with medicine and ration kits. The safety of our own staff is of paramount importance. To ensure the safety of our COVID warriors, mobilized safety kits, gloves, sanitisers, face shields and other safety gear.

When COVID cases were in a surge during different waves, home isolation and home-based care became very important to reduce the risk and vulnerabilities of the COVID positive patients with mild or no symptoms and also it helped to reduce the burden on the health system. SMS team mobilized home quarantine kits which had essential medicine, home isolation guidelines, digital thermometer and sanitary items.

3. Solar powered tailoring machine and solar power for Swati Savi Unit:

Selco India Foundation is supporting sustainable energy practices in order to have long term energy access which affects rural and urban populations' livelihood, generation capacity, education attendance, health outcomes and overall quality of life. SMS team approached SELCO India for support. They generously donated 9 units of sewing machines which can be operated through solar and also donated solar panels for Swati Savi Production unit.



4. Business loan for members and Savi unit upgrading:

SMS has a considerable number of members who are street vendors. Their business hit hard during pandemic time. SMS approached different stakeholders to support these members. **BBMP, Argyam and Vrutti** are supporting SMS in supporting these members. An amount of Rs 19,20,000 has been distributed as business loan benefitted to 167 members. Members are doing small business like fruits and vegetable selling, snacks centers and flower vending etc. COVID hit their business very badly. Taking support from Argyam and Vrutti, Rs 10,000 per member is given to sustain their business. This will serve as a revolving fund to SMS and once the member repays Rs 10,000 the same will be given to another member who uses this money to improve their business.

Besides this, SMS also mobilized Rs 2.5 lakh from donors to revamp their Savi unit. Savi unit is the innovation wing of SMS and working with communities to promote health products and give employment opportunities. To promote better hygiene and large-scale production, machineries were brought to sustain the business and practice of preparing items through bare hands has been stopped.



5. COVID Vaccination Support to members and their families:

Vaccination is the only weapon we have to control the spread of epidemics today. Even Though Govt. of India had announced free vaccination to citizens in Jan 2021, it took months to operationalise it. During mid May 2021, vaccinations are made available to the general public above 18 years. Since the demand and supply couldnt match, there was huge hue and cry for vaccination and marginalised communities like sex workers and their family could access vaccines in public health care service providers. Long hours to wait and limited supply of vaccines in Govt. hospitals couldn't reach these communities. SMS team tied up with various stakeholders to ensure vaccination to members and their families.

40,090 people were vaccinated with the support of SATTVA, Swasti, United Way, SEVA and other agencies to sex workers, their family members and migrants



6. Direct cash transfer to members bank account:

Senior team members of SMS are members in various national and international community networks and welfare groups. Through networking and continuous lobbying, they were able to mobilize direct money transfer support from Global Fund for AIDS, TB and Malaria. Rs 20,60,415 is directly transferred to members' accounts. SMS had put a lot of hard work into making this happen. Many of the members were not having bank accounts in nationalized banks and to open one, they did not have proper documents. SMS worked closely with them in getting their documentation ready and accounts opened in nationalized banks.

Rs 20,60,415 has been transferred to the account of 1395 sex workers with the support from GFATM

7. Leveraging with Govt. departments for social welfare schemes and COVID special schemes:

During the pandemic time, the Govt had announced some special schemes for lower income and marginalized groups. SMS focussed tapping these resources along with existing schemes for the benetis of our members.

626 community members and their families received the benefit of Rs 12,98,25,000 from various schemes including Chetana, , Dhanushree, Mathru Vandana, ,Auto taxi relief fund, Laptop for students and ,arogya card



8.i4We (Invest for Wellness)programme:

It is evident from early pandemic outbreak days that COVID-19 will impact cleverly to people with high burden health conditions. Those people who have BP or Blood sugar are most at risk when compared to other people. Since the health seeking behavior is very poor among communities, majority of them do not know that they are having these high burden health conditions. Realizing the gravity of the situation, SMS organized continuous health screening camps mainly to screen and treat blood sugar, blood pressure and anemia.

SMS leveraged with Swasti NGO for the support. They trained the team on point of care screening, provided machines and supplies to do the screening and also backed the team with technical support to conduct these mega camps observing COVID appropriate behavior. Nearly 40 to 50% of the people diagnosed with high burden conditions were not aware of their health issues prior to the screening. These screening helped them in taking corrective actions including treatment, counseling and adoption of a healthy lifestyle.

More than 19,000 people screened
for 3 high burden health
conditions using kits worth Rs
11,30,450 with the support from
Swasti and skandatech