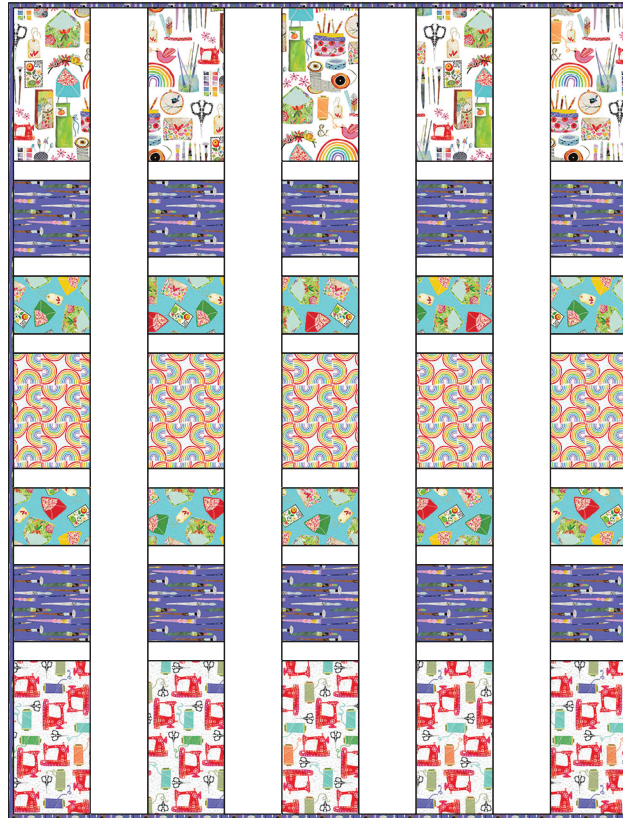




create & hobby Quilt



Finished Size: 32 ½" x 42 ½" (82.55cm x 107.95cm)

Fabric Needed

3 Wishes Fabric® Create & Hobby Collection by Kate Mason

- ¾ yd (68.58cm) – Paintbrushes (16012-PUR-CTN-D)
for Piecing and Binding
- ⅓ yd (30.48cm) – Hobbies (16008-WHT-CTN-D)
- ⅓ yd (30.48cm) – Envelopes (16010-BLU-CTN-D)
- ⅓ yd (30.48cm) – Sewing (16011-WHT-CTN-D)
- ¼ yd (22.86cm) – Rainbows (16009-WHT-CTN-D)
- 1 ½ yds (137.16cm) – Rainbows (16009-WHT-CTN-D)
for Backing

3 Wishes Fabric® Hello Spring Collection

- ¾ yd (68.58cm) – White Lily (15978-WOW-CTN-D)

ADDITIONAL SUPPLIES NEEDED:

- 40" x 50" (101.6cm x 127cm) Cotton batting
- Piecing and sewing thread
- Quilting and sewing supplies
- Even-feed foot (optional for quilting)

Before you begin

Read all instructions before beginning project. Do not pre-wash fabrics. Press fabrics with a dry iron on cotton setting before cutting. Use a ¼" (6.35mm) seam allowance and sew fabrics with right sides together (RST) unless otherwise noted. Press seams in the direction of the arrows. wof = width of fabric

Cutting

Use a rotary cutter and acrylic ruler to cut the number of pieces from each fabric listed below.

3 ½" x 42 ½"	
1 ½" x 25"	

Hello Spring Collection – White Lily – 15978-WOW-CTN-D
(¾ yd x wof / 68.58cm x 107.95cm)

Cut 4 – 3 ½" x 42 ½" (8.89cm x 107.95cm)

Cut 6 – 1 ½" x 25" (3.81cm x 63.5cm)

4 ½" x 25"	2 ½" x 32"	

Paintbrushes – 16012-PUR-CTN-D (¾ yd x wof / 68.58cm x 106.68cm)

Cut 2 – 4 ½" x 25" (11.43cm x 63.5cm)

Cut 6 – 2 ½" x 32" (6.35cm x 81.28cm) for Binding

8 ½" x 25"	

Hobbies – 16008-WHT-CTN-D (½ yd x wof / 30.48cm x 106.68cm)

Cut 1 – 8 ½" x 25" (21.59cm x 63.5cm)

3 ½" x 25"	

Envelopes – 16010-BLU-CTN-D (½ yd x wof / 30.48cm x 106.68cm)

Cut 2 – 3 ½" x 25" (8.89cm x 63.5cm)

8 ½" x 25"	

Sewing – 16011-WHT-CTN-D (½ yd x wof / 30.48cm x 106.68cm)

Cut 1 – 8 ½" x 25" (21.59cm x 63.5cm)

6 ½" x 25"	

Rainbows – 16009-WHT-CTN-D (¼ yd x wof / 22.86cm x 106.68cm)

Cut 1 – 6 ½" x 25" (16.51cm x 63.5cm)

Sewing

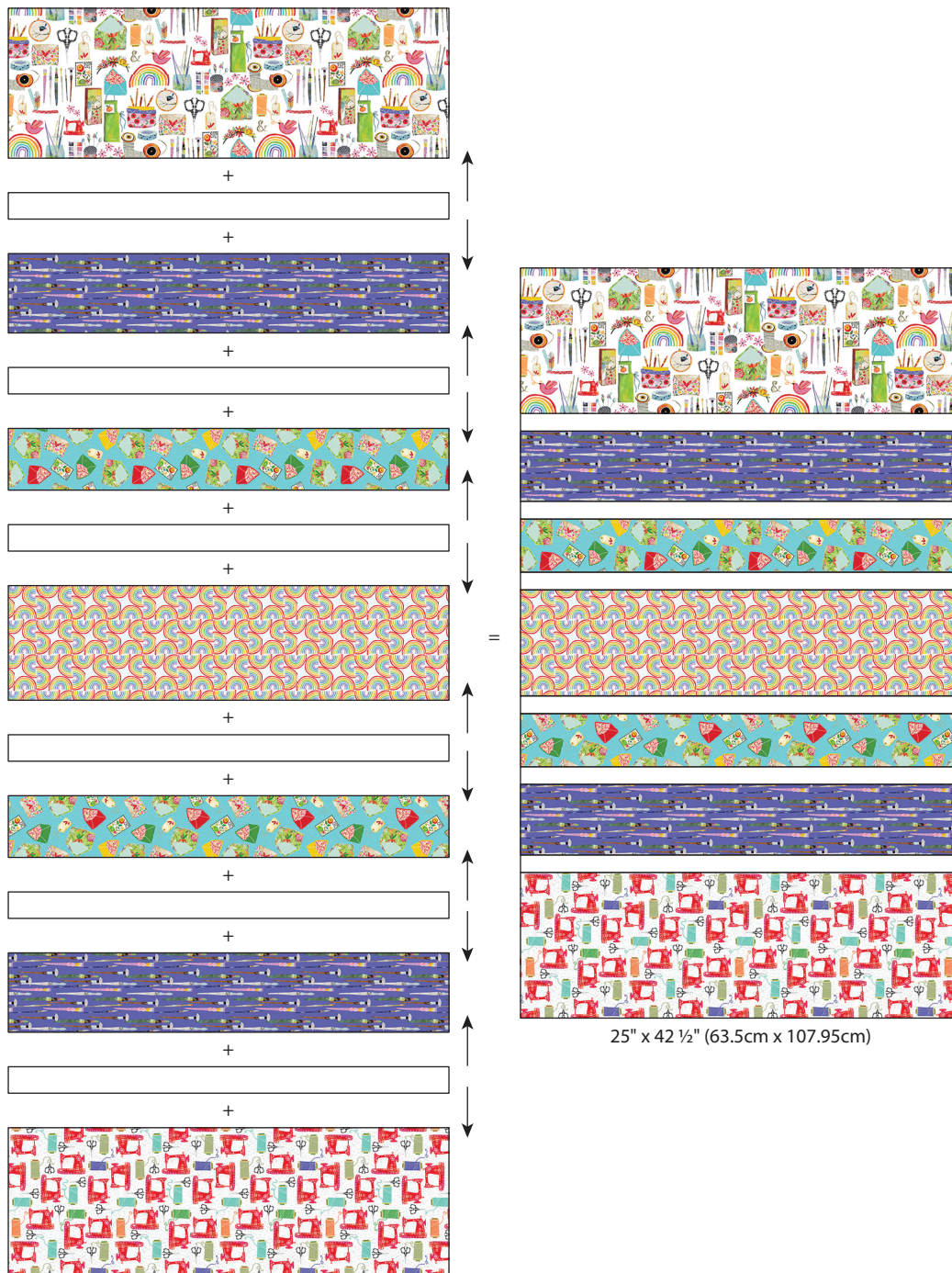
1. Place the following strips in the order shown in Diagram A:

- 1 – Hobbies (8 ½" x 25" / 21.59cm x 63.5cm)
- 1 – Sewing (8 ½" x 25" / 21.59cm x 63.5cm)
- 1 – Rainbows (6 ½" x 25" / 16.51cm x 63.5cm)
- 2 – Paintbrushes (4 ½" x 25" / 11.43cm x 63.5cm)
- 2 – Envelopes (3 ½" x 25" / 8.89cm x 63.5cm)
- 6 – White Lily (1 ½" x 25" / 3.81cm x 63.5cm)

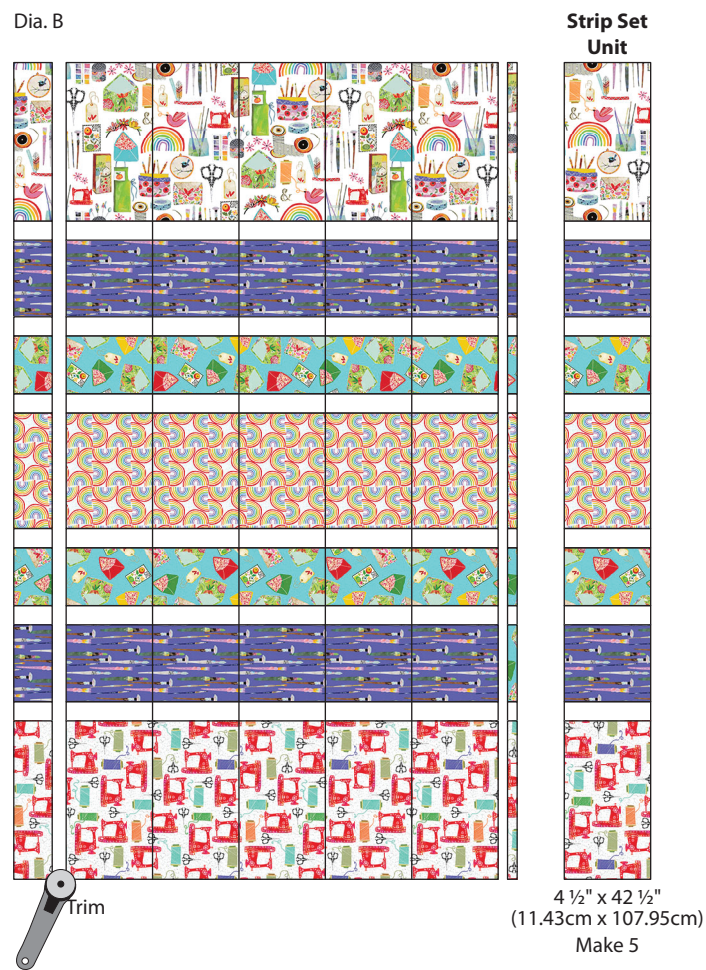
Pin RST and sew; press. The strip set should measure 25" x 42 ½" (63.5cm x 107.95cm).

Tip: Sew each seam in the opposite direction to minimize distortion.

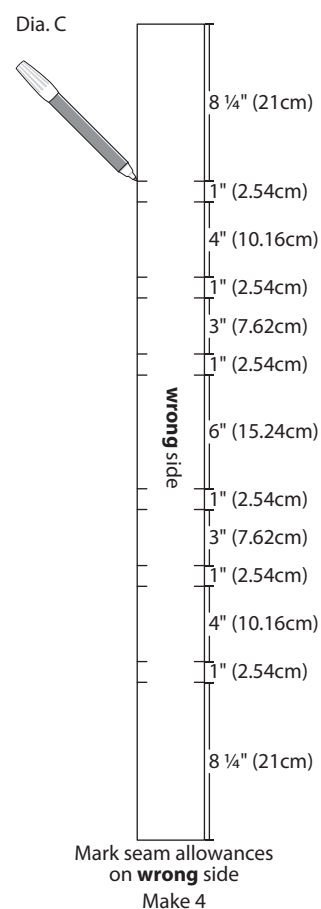
Dia. A



2. Straighten one end and cut into five Strip Set Units ($4\frac{1}{2}" \times 42\frac{1}{2}"$ / 11.43cm x 107.95cm) as shown in Diagram B.

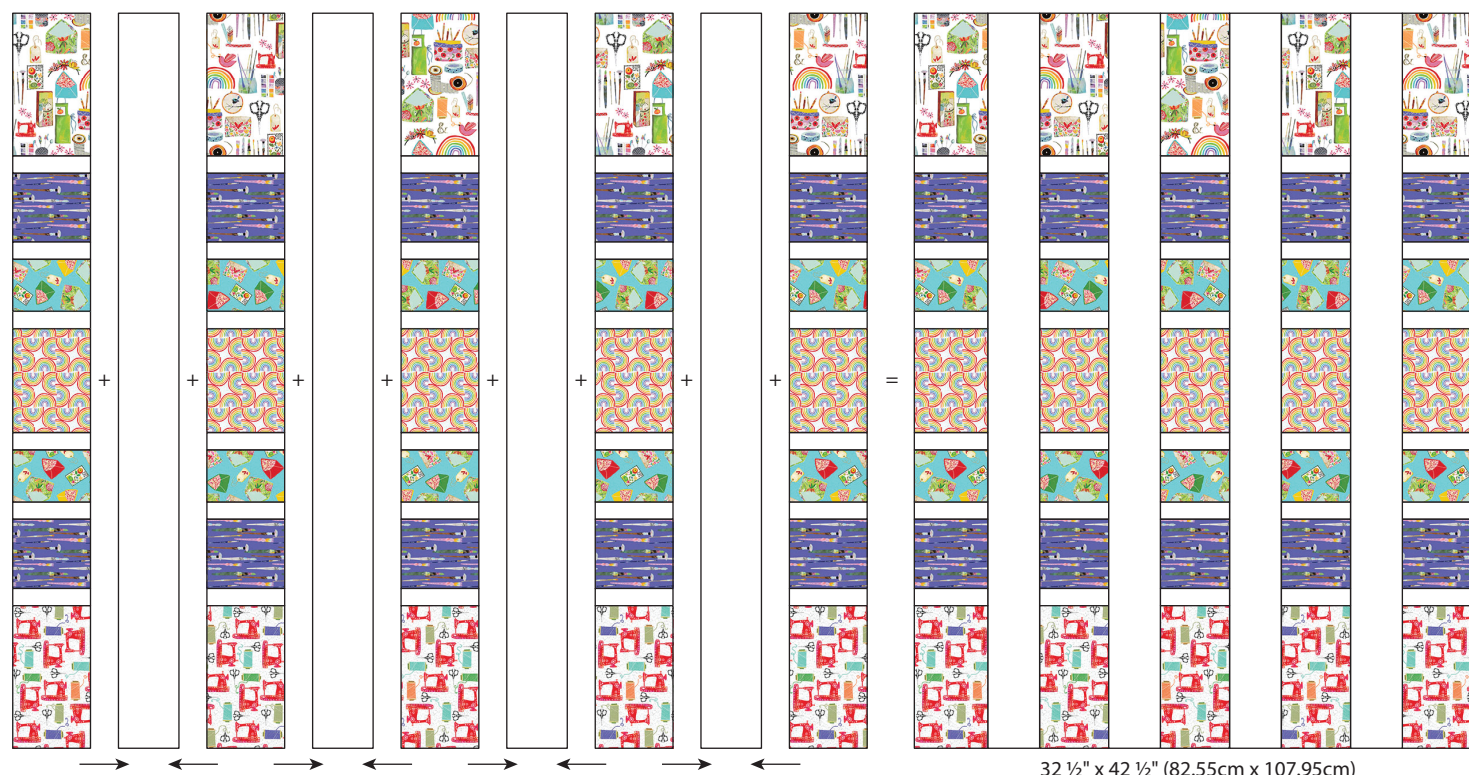


3. On the **wrong** side of the four White Lily rectangles ($3\frac{1}{2}" \times 42\frac{1}{2}"$ / 8.89cm x 107.95cm) make small marks in the seam allowance matching the increments to the width of the pieces in the Strip Set Units as shown in Diagram C.



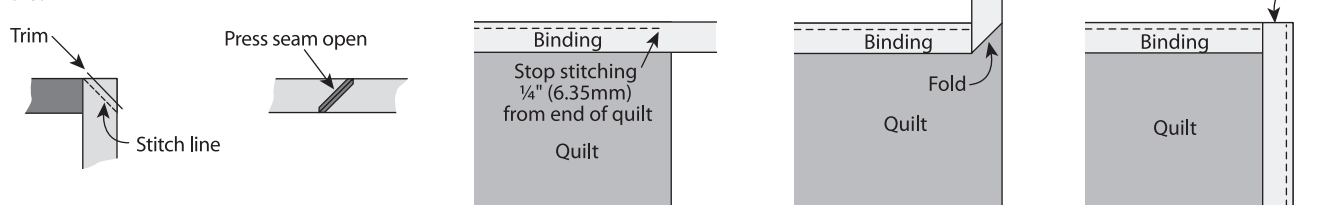
4. Alternate the five Strip Set Units (4 ½" x 42 ½" / 11.43cm x 107.95cm) with the four White Lily strips (3 ½" x 42 ½" / 8.89cm x 107.95cm) as shown in Diagram D. Match the seams to the marks and pin RST; sew and press. The finished Quilt Top should measure 32 ½" x 42 ½" (82.55cm x 107.95cm).

Dia. D



5. The Rainbows 1 ½ yards (137.16cm) backing is enough to cover the length and width of the top. If using a long arm machine to quilt, extra fabric basted onto backing edges might be necessary.
6. Press finished Quilt Top and Backing. Tape the backing **wrong** side up to a firm surface. Layer batting and Quilt Top (right side up). Baste the layers together with safety pins. Quilt as desired.
7. Once quilting is complete, square up corners and edges. Trim excess backing and batting even with the Quilt Top.
8. To make the Paintbrushes binding, remove selvages and sew the short ends of the six 2 ½" x 32" (6.35cm x 81.28cm) strips RST end to end at a 45° angle to make one continuous strip; press seams open. Press one short end ¼" (6.35mm) to the **wrong** side. Fold in half lengthwise with **wrong** sides together; press. Leaving a 2" (5.08cm) tail on the folded end, place cut edges of folded binding even with the edge of the wall quilt top and sew, mitering the corners. Overlap ends, trim any excess and finish sewing the binding. Fold binding over to back and hand stitch.

Dia. E



Finished Care Instructions

Machine wash in cold water; gentle cycle. Do not bleach. **Tip:** Before drying, check for fabric dyes that may have run. If fabric dyes run, rewash and rinse using a color catcher to absorb loose dye. Lay flat to dry or tumble dry low.