



SOUTH TEXAS  
**HERITAGE SALE**



**JB Wells Park Arena and Expo Center**  
**Selling 60+ Registered and Commercial Santa Gertrudis & Star5 Females**  
*Plus* **Private Treaty Bulls**



**NOV 22, 2025**  
**GONZALES, TX**

WELCOME TO THE

# SOUTH TEXAS HERITAGE SALE

An Opportunity to Build your Herd with Functional Santa Gertrudis and Star5 Females

It feels like just yesterday we were gathered for the 2024 South Texas Heritage Sale, and here we are again, another year later, reunited for what promises to be another outstanding event. I want to take a moment to sincerely thank all of our consignors. Your year-round dedication and hard work bring exceptional females to this sale, and we are truly grateful for your commitment to quality.

A huge thank you also goes to the South Texas Heritage Sale Board. I couldn't ask for a better team. Each one of them takes time out of their busy lives to help make this sale a success, and it wouldn't happen without their efforts. If you see one of them today, please take a moment to thank them.

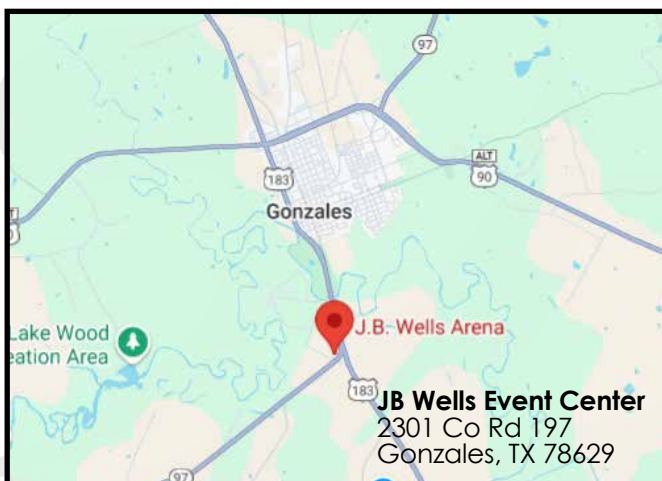
Once again, welcome — and let's make the 2025 South Texas Heritage Sale one for the history books!

*Devlin Reese*

## Sale Day Phones

Devlin Reese	(956) 286-4239
Kade Thigpen	(830) 426-1366
Adolfo Sanchez	(505) 507-2898
K.T. Hefte	(361) 813-4937

## Location



**Special thanks to auctioneer:  
Leo Casas, III**

## South Texas Santa Gertrudis Association

### Our Mission

The South Texas Santa Gertrudis Association was established in 2014 to further the improvement of the breeding of Santa Gertrudis cattle, to hold sales and shows promoting Santa Gertrudis cattle and to work in every manner pertaining to the promotion and progress of the Santa Gertrudis breed.

### Our Officers

Kenneth Tom Hefte, President  
Felix Serna, Vice President  
Kathryn Hefte, Secretary/Treasurer

### Our Board Members

Larry Garza  
Cynthia Strait  
Heather Blewett  
Devlin Reese  
Melanie Brewer

## JOIN US

If you would like to become a member of the South Texas Santa Gertrudis Association, please contact Kenneth Tom Hefte at (361) 813-4967.



# Data Definitions

**SGBI Expected Progeny Differences:** Expected Progeny Differences, EPDs, are the prediction of how future progeny of each animal are expected to perform relative to the progeny of other animals listed in the SGBI database. EPDs are expressed in units of measure (plus or minus) for each trait being evaluated and are calculated utilizing pedigree and performance information. SGBI is a leader in the adoption and implementation of cutting-edge genetic technology. In 2013, SGBI released the first genomic-enhanced expected progeny differences (DNA verified) for Bos indicus-influenced cattle. The inclusion of DNA into the breed's EPD calculations (GE-EPDs) has resulted in information that is more accurate and predicabile than a pedigree and performance prediction alone. Currently, the association's database contains more than 8,000 performance verifying DNA samples. In addition, to being the first Bos indicus-influenced breed to offer GE-EPDs, SGBI was the first beef breed to implement single-step methodology for the incorporation of genetic information into the genetic evaluation. This approach maximizes use of data reported on all animals throughout the pedigree and greatly improves the EPD accuracy.

**SGBI Indices:** Due to the amount of performance data submitted over the last 5- year period, the SGBI Board of Directors approved a recalibration of the breed's genetic evaluation and the development of new selection indices to replace the association's original selection indices. The Performance Committee ratified the recalibration and indices in 2021. As expected, there was some movement, however, the recalibrated information presents a more accurate picture of an animal's genetic merit.

**SGBI Balanced Index:** This index assumes that producers are keeping replacement heifers from the bulls they purchase. It further assumes that producers are either 1) marketing carcasses on the grid or 2) that buyers of their feeder calves base pricing on feedlot and carcass performance.

**SGBI Cow/Calf Index:** This index assumes that producers are keeping replacement heifers from the bulls they purchase. However, it assumes all calves are marketed at weaning or soon thereafter. It further assumes that feeder calf buyers don't base decisions on feedlot or carcass performance, making these traits less relevant to profitability.

**SGBI Terminal Index:** This index assumes that producers are not keeping replacement heifers from the bulls they purchase. It assumes that producers are marketing carcasses on the grid, making carcass traits relevant to their business.

Selection indices will be reported as a percentile ranking (top 1% - bottom 99%) and will replace \$ Growth and Carcass Rank, on pedigrees.

Bidding also available on:

**DVAuction**  
Broadcasting Real-Time Auctions

# Terms and Conditions

**Terms:** The terms of the sale are cash or check, payable at sale location.

**Herd Health:** If not from accredited herds, heifers will have brucellosis vaccination or clean test.

**Purchaser's Risk:** Each animal becomes the risk of the purchaser as sold. Animals will be care for at the purchaser's risk for reasonable length of time.

**Breeder's Guarantee:** No guarantee is given that a pregnant female will deliver a live calf or that she will carry a calf full term. Bulls sell with satisfactory semen test within 30 days of sale.

**Accidents:** Although every precaution will be taken to protect the safety and comfort of buyers, neither the Sales Management, Auctioneer nor seller assumes any responsibility in this manner and disclaims any liability, legal or otherwise in the event of accident or loss of property.

**Liability:** The Sales Management and/or Auctioneer has been employed by the consignors of the animals being sold solely for the purpose of advertising and conducting the subject sale. All information regarding the subject animals as published in the sale brochure and as announced in the sale is based on representation made to the Sales/Management/Auctioneer have not made any independent investigation to verify the title, health, registration and lien status of the subject animals; and the Sales Management and/or Auctioneer make no representations, either expressed or implied, as to whether or not the subject animals are security under any lien, with legal equitable.

**Announcements:** Announcements from the auction block will take precedence over the printed material in this catalog. Buyers are therefore cautioned to pay attention to any such announcements.

---

 Denotes Top 20% of Breed

---

## Friday, Nov 21st

4 PM - View Cattle

## Saturday Nov 22nd

8 AM View cattle, coffee and doughnuts

11 AM - Traditional Mexican Lunch

Noon - South Texas Heritage Sale. Cattle can be loaded out following the sale.

4 PM - STJSGA Hot Gert Open Show

## Sunday, Nov 23rd

9 AM - STJSGA Hot Gert Junior Show

Noon - Sale cattle must be off fairgrounds.

# 1 SAN JOSE CATTLE CO



## A SJ Lady Buffalo Bill 11M

Reg: 20241160 2/2/2024 P  
Bred to: Harris Bonanza 62K2

BW	WW	YW	TM	REA	Marb	BI	CCI	TI
1.3	13	22	10.74	0.06	-0.17	65	55	70

## B SJ Lady Tecate 34M

Reg: 20241161 2/8/2024 P  
Bred to: Harris Bonanza 62K2

BW	WW	YW	TM	REA	Marb	BI	CCI	TI
1.3	23	26	12.29	0.07	0.2	20	15	25

## C SJ Lady Maverick 619L

Reg: 20235818 10/24/2023 P  
Bred to: Harris Bonanza 62K2

BW	WW	YW	TM	REA	Marb	BI	CCI	TI
1.2	18	23	12.06	0.11	0.16	30	35	30

619L is a QVF Maverick 82H10 daughter that goes back to Patton and Wave-maker. Her dam was successful in the show ring and is ultra-productive in the pasture. This heifer combines a strong phenotype with an impressive EPD profile, ranking in the top 35% in 12 traits. 11M is a daughter of power bull Harris Buffalo Bill and goes back to Wavemaker and Don Dan. She hails from an extremely fertile female line, her dam is still in production at 10 years of age, and she will no doubt be a great brood cow for any program. 34M is a Harris Tecate daughter out of a Wavemaker cow that is still in production at 10 years of age. This deep bodied, feminine female combines growth and carcass with a balanced EPD profile, ranking in the top 35% in 10 EPD traits. All three of these heifers are bred to our up and coming herd sire who ranks in the top 35% in an astonishing 15 EPD traits.

- ♂ RED DOC EL REY 3424
- ♂ HARRIS BUFFALO BILL 066F3
- ♀ HARRIS 066C2
- ♂ SJ WHISKEY RIVER 304
- ♂ SJ LADY CATALINA 519
- ♀ HARRIS FARMS 34/3
- ♂ Harris Farms 190E
- ♂ Harris Tecate 190E 253G38
- ♀ SR T45
- ♂ HARRIS FARM 12/8(WAVE MAKER) 12/8
- ♂ SJ LADY 523
- ♀ MISS 6T34
- ♂ KR651/18(CHOSEN ONE)
- ♂ QVF MAVERICK 82H10
- ♀ HARRIS 82/4
- ♂ SJ PATTON 300
- ♂ SJ LADY VIENNA 619
- ♀ SJ LADY VALENCIA 311

# 2 STRAIT RANCHES



## 684 / M

Reg: 20245387 4/18/2024 H  
Bred to: AI 6/17/2025 to SR MY FRIEND  
YN 7/20 (20220218) PE to SR 2/H4 69/  
K2 (20226811) 7/1/2025 to 7/18/2025,  
SR POWER SURGE 117/K2 ET (20227496)  
7/18/2025 to 7/21/2025, SR BVLGARI  
66/L (20236139) 7/21/2025 to 9/15/2025

BW	WW	YW	TM	REA	Marb	BI	CCI	TI
0.8	0	11	-3.86	0.08	-0.02	75	60	90

684/M is an own daughter of our Beast Bull and out of a Briggs cow, 684/14. 684/14 has a 388 day average calving interval after 9 calves. 684/M's fertility EPDs all rank in the top 25% or better.

- ♂ KR CATALYST 531/15
- ♂ SR 368/G1
- ♀ 3S2E MARLA 368D2 (ET)
- ♂ LF CHUCKIE BOY X2
- ♂ Briggs 684/14
- ♀ BRIGGS 557/6

# 3 O/X RANCH



## 938

Reg: 20240364 3/24/2024 P  
Bred to: KK The Valedictorian  
(20210201) AI on 4/25/2025 and Pas-  
ture Exposed to Hefte Ranch L114 ET  
(20226372) and BSR RIP (20200819)  
from 5/1/2025 to 7/30/2025.

BW	WW	YW	TM	REA	Marb	BI	CCI	TI
-1.6	9	3	9.14	-0.09	0.2	30	25	30

O/X 938 is a dark cherry red, polled and bred female ready to go to work for your operation. Sired by Hefte Ranch H130, she brings the beautiful profile and performance with Indexes: Balanced: 20, Cow/Calf: 25 and Terminal: 30. Alongside with Hefte Ranch H130, this female's genetics include SR Arkoma 30/0, SR Genesis 75/3, and KR 191/13. \*O/X 938 was AI'd to KK The Valedictorian on 4/25/2025 and PE to Hefte Ranch L114ET (#20226372) and BSR RIP (#20200819).

- ♂ KR 191/13
- ♂ Hefte Ranch H130
- ♀ Hefte Ranch A78
- ♂ SR GENESIS 75/3
- ♂ SR Ms Genesis 249/J
- ♀ DB 249/5

4

**HEFTE RANCH** *A* **Hefte Ranch M45**



\$

Reg: 20241576 1/28/2024 P  
 Bred to: AI on 04/22/2025 to KINGS AMIGO KR766/20 (20205189). PE to HEFTE RANCH K89 (20222946) and RED DOC POBLANO 3270 (20233233) from 05/16/25 to 08/15/2025.

BW	WW	YW	TM	REA	Marb	BI	CCI	TI
-0.8	13	16	13.26	0.01	0.27	20	30	15

- r KR 921/15
- l **HEFTE RANCH F14 TOMCAT**
- l HEFTE RANCH D140ET
- r KR 191/13
- l **Hefte Ranch H162 ET**
- l Hefte Ranch A43

*B* **Hefte Ranch M68**

Reg: 20242439 3/29/2024 P  
 Bred to: AI on 05/06/2025 to SR Paradigm 136/7 (20175656). PE to HEFTE RANCH K89 (20222946) and RED DOC POBLANO 3270 (20233233) from 05/16/25 to 08/15/2025

BW	WW	YW	TM	REA	Marb	BI	CCI	TI
2.4	19	24	19.78	0.01	0.1	40	35	40

- r Hefte Ranch D25
- l **HEFTE RANCH K40**
- l HARRIS FARMS 37/8
- r HEFTE RANCH F14 TOMCAT
- l **HEFTE RANCH K31**
- l HEFTE RANCH D141ET

These two females have lots of depth and quality, not just from an EPD standpoint but pedigree as well. M45 goes back to KR 191/13 and our A51 cow line. M68 comes from a cow family that has incredible fertility. She goes back to Dunlap Harper top and bottom while maintaining modern performance. These two bred heifers are well rounded balanced females.

5

**RED DOC FARM**



\$

**2556**

Reg: 20227258 12/5/2022 H  
 Bred to: Red Doc Madre 4198, Red Doc ET Pronto 2401

BW	WW	YW	TM	REA	Marb	BI	CCI	TI
0.3	16	25	9.65	0.21	0.25	20	50	5

- r RED DOC TRUMP 5127
- l **Red Doc Trump's Acquitall 8511**
- l RED DOC ET 6012
- r MULKEY
- l **Red Doc 7044**
- l Red Doc 3420

Red Doc 2556 is built to thrive in any environment with her structure, capacity, and disposition all pointing to long-term productivity. She is natural service to Red Doc Madre 4198(20241968) and cleaned up with Red Doc ET Pronto 2401(20226394), due to calve January 2026.

6

**PASSION FARMS**



\$

**4016**

Reg: 20240303 3/14/2024 P  
 Bred to: KR877/24 or Passion Farms Supreme 4005

BW	WW	YW	TM	REA	Marb	BI	CCI	TI
0.7	15	29	6.21	0.19	0.07	40	65	25

- r Red Doc CHECKMATE 7069
- l **Red Doc ET Top Cut 9568**
- l RED DOC ET 6012
- r Red Doc ET 8191
- l **PASSIONS FLOWER**
- l Red Doc 8078

Limited Release opportunity to own this Red Doc ET Top Cut 9568 daughter that blends pedigree, growth, carcass, and docility into one predictable package. Sired by the proven and powerful Top Cut 9568 and backed by the elegance and productivity of Passion's Flower, this female checks all the boxes for someone looking to add elite seed stock genetics to their herd. Bred for Success, Passion Farm's 4016 was pasture exposed from 5/23/25 - 7/23/25 to two exciting new herd sires: Passion Farm's Supreme 4005, class winner at Fort Worth and Houston (Now owned by Diamond T Land and Cattle Co.), and King Ranch 877/24, a bull selected out of the King Ranch 2024 bull calf crop. This mating represents the progressive direction of crossing growth, carcass, and phenotype into an investment that will work today and pay dividends tomorrow.

7

## ROCKING F CATTLE



\$

### RF Valentine 2/174

Reg: 20240119 2/14/2024 P  
 Bred to: AI to KR6551/18 Chosen One  
 Exposed to Red Cat

BW	WW	YW	TM	REA	Marb	BI	CCI	TI
1.3	25	32	21.82	0.18	0.02	35	50	25

Red Doc EL HOMBRE 6279  
 WR 313  
 CB 735  
 LeGRAND FARMS 177  
 F 49/20  
 JOLIE 101

RF Valentine 2/174 is a Red Doc El Hombre 6279 granddaughter out of our herd bull WR 313 (Willie 20198147). She is deep chested and big butted. This heifer is the kind that will be a long-lasting herd cow. She has 7 top 20 EPD's including Top 10 WW, TM and FT. She scanned an actual ribeye area of 11.60. She has been started on a halter. Valentine was AI'd to KR 651/18 Chosen One (20183702) on 5/22 and pasture exposed to RF Red Cat (20223694) from 6/1 to 8/1.

8

## JTP CATTLE



\$

### 128/4

Reg: 20240799 1/28/2024 P  
 Bred to: Red Doc ET6343

BW	WW	YW	TM	REA	Marb	BI	CCI	TI
1.4	9	11	11.02	-0.03	-0.04	80	70	85

SR 83/7  
 MR CF ROSCO 075  
 MISS CF 597  
 BULLETPROOF 4-30  
 CLEOPATRA 5-610  
 LADY CAMEO

JTP 128/4 is a polled January of 2024 heifer that puts all of the pieces together. This female is sound from the ground up, square hipped, wide topped, and deep bodied. She puts it all together in a feminine package. She was bred to Red Doc ET 6343 on 7/13/25.

9

## RED DOC FARM



\$

### A 4442

Reg: 20241998 4/10/2024 P  
 Bred to: Red Doc 3541

BW	WW	YW	TM	REA	Marb	BI	CCI	TI
1.1	14	34	10.99	0.32	0.17	35	70	20

Red Doc ET Lumbre 8509  
 RED DOC 1078  
 RED DOC MADRE 2081  
 Red Doc 7263  
 Red Doc 0306  
 612/14

### B 4439

Reg: 20244491 4/20/2024 P  
 Bred to: Red Doc 3541

BW	WW	YW	TM	REA	Marb	BI	CCI	TI
1.3	8	24	3.73	-0.03	0.07	65	80	45

Red Doc 7066  
 Red Doc 0067  
 Red Doc 8150  
 RED DOC 3150  
 RED DOC 5384  
 RED DOC 3338

These eye-catching Red Doc heifers are super clean, soggy, and both are polled. Balanced in their design, these heifers are bred to Red Doc ET 3541 (20236332), the full embryo brother to Red Doc Fuego 1032, and are due to calve in Spring 2026.

10

**HEFTE RANCH** *A* **Hefte Ranch M148**



\$

Reg: 20245080 2/22/2024 P  
 Bred to: AI on 05/08/25 to KINGS AMIGO KR766/20 (20205189). PE to HEFTE RANCH K89 (20222946) and RED DOC POBLANO 3270 (20233233) from 05/16/25 to 08/15/2025

BW	WW	YW	TM	REA	Marb	BI	CCI	TI
-1.5	20	19	19.9	0.1	0.25	10	20	10

*B* **Hefte Ranch M18**

Reg: 20241567 1/24/2024 P  
 Bred to: AI on 05/08/2025 to Red Angus bull, RAB TOP TIER G242 (20198499). PE to HEFTE RANCH K89 (20222946) and RED DOC POBLANO 3270 (20233233) from 05/16/25 to 08/15/2025

BW	WW	YW	TM	REA	Marb	BI	CCI	TI
-0.7	26	30	26.59	0.14	0.32	2	3	3

These two heifers are big stout made females that carry a lot of growth and milk. M148 goes back to a Briggs cow that has been a very consistent producer for us. The M18 cow family is extremely strong in our program. She ratioed 112 for weaning weight and should have no trouble passing that performance to her calves.

- ┆ HEFTE RANCH F14 TOMCAT
- Hefte Ranch H82**
- ┆ HEFTE RANCH F58 ET
- ┆ BRIGGS 023/91
- 023 Briggs 064E**
- ┆ Briggs 220/14
- ┆ KR 921/15
- HEFTE RANCH F14 TOMCAT**
- ┆ HEFTE RANCH D140ET
- ┆ KR 191/13
- Hefte Ranch G01**
- ┆ HEFTE RANCH Z01

11

**DOUBLE G FARMS**



\$

**407 DOUBLE G'S CAMILA**

Reg: 20241681 5/30/2024 H  
 Bred to: 39

BW	WW	YW	TM	REA	Marb	BI	CCI	TI
-0.2	8	14	5.5	0.04	0	45	35	50

- ┆ SR 128/6
- SR ADVANTAGE 5235/J**
- ┆ SR 88/7
- ┆
- 707/1**
- ┆ SR 10/2

We feel that this heifer represents the type of animal Double G Farms is striving to produce. A deep bodied, functional yet eye appealing female, able to hold her own in the pasture as well as the show ring. Our 4th generation Double G Farms cattle producer, Sophia Reyes, has raised and shown Double G's Camila, who was bred by her cousin and 3rd Generation Double G Farms rancher, Adrian Garza. Camila is sired by the great SR Advantage 5235 J and out of a many times a winner, Schuster 407. She sells bred to Triple P's Blueprint, who goes back to SR Sendero, she's due to calve in April 2026. Camila is still eligible to be shown, she's halter broke and ready to go.

12

**FULTON FARMS**



\$

**ES 297**

Reg: 20227951 10/19/2022 P  
 Bred to: Sim/Angus Bull

BW	WW	YW	TM	REA	Marb	BI	CCI	TI
0.8	17	20	15.21	0.05	-0.1	50	40	60

- ┆ RED DOC MASTER BURNS 5461
- Hefte Ranch G104**
- ┆ GEMINI X52
- ┆ 777 Double Down Diamond ET
- ES 909**
- ┆ Biscuit

This young female comes from our replacement herd. 297 has Fulton Farms foundation bloodlines on her dam side going back to Pop Tart, the dam of Honey Bunn, Taylor's 2016 reserve National Junior Champion and 2018 Reserve National Open Champion. Sire side is our Hefte Ranch bull "Hondo" who has been an asset to our operation. 297 is bred to "Ronnie", our Simm/Angus bull from the Irvine Ranch in Manhattan, Kansas. 297 will calve prior to the sale.

13

HEFTE RANCH **Hefte Ranch M151**

Reg: 20246595 2/6/2024 P  
 Bred to: AI on 05/08/2025 with RED  
 DOC NEVER SANK 5102 (20173072)  
 heifer sexed semen. PE to HEFTE  
 RANCH K89 (20222946) and RED  
 DOC POBLANO 3270 (20233233) from  
 05/16/25 to 08/15/2025

BW	WW	YW	TM	REA	Marb	BI	CCI	TI
-0.5	17	32	15.46	0.15	0.21	15	30	10

**Hefte Ranch M29**

Reg: 20241568 2/25/2024 P  
 Bred to: AI on 05/06/2025 to SR  
 Paradigm 136/7 (20175656). PE to  
 HEFTE RANCH K89 (20222946) and RED  
 DOC POBLANO 3270 (20233233) from  
 05/16/25 to 08/15/2025.

BW	WW	YW	TM	REA	Marb	BI	CCI	TI
-0.5	22	23	23.81	0.02	0.16	15	15	15

**Hefte Ranch M11**

Reg: 20241565 1/17/2024 P  
 Bred to: AI on 05/06/2025 to SR  
 Paradigm 136/7 (20175656). PE to  
 HEFTE RANCH K89 (20222946) and RED  
 DOC POBLANO 3270 (20233233) from  
 05/16/25 to 08/15/2025

BW	WW	YW	TM	REA	Marb	BI	CCI	TI
-1.1	11	18	14.82	0.03	0.14	25	25	25



\$

These three heifers are moderate thick made females. M151 ties in Hefte Ranch El Primero and KR 191/13, and has 8 traits in the top 35% or better. M29's dam goes back to a Briggs cow that established herself as a matriarch in our program for years. M11 goes back to Genesis on the bottom side, she should be an excellent calving ease option moving forward. This set of heifers has incredibly balanced EPDs.

⌈ KR 921/15  
**HEFTE RANCH F14 TOMCAT**  
 ⌋ HEFTE RANCH D140ET  
 ⌈ KR 191/13  
**Hefte Ranch J40**  
 ⌋ Hefte Ranch D93

⌈ KR 921/15  
**HEFTE RANCH F14 TOMCAT**  
 ⌋ HEFTE RANCH D140ET  
 ⌈ Hefte Ranch D25  
**Hefte Ranch H54**  
 ⌋ BRIGGS 039/5

⌈ KR 921/15  
**HEFTE RANCH F14 TOMCAT**  
 ⌋ HEFTE RANCH D140ET  
 ⌈ SR GENESIS 75/3  
**Hefte Ranch H11**  
 ⌋ Hefte Ranch F45

**BE TIMELESS  
 BE NŪMAN**

- **STRENGTH**
- **ENERGY**
- **STAMINA**



**MEN'S HORMONE SUPPORT | MADE BY CORE CULTURE™**





14

STRAIT RANCHES



\$

613 / L14

Reg: 20230748 5/5/2023 P

Bred to:

Calf at side: 9/19/20 Bull

BW	WW	YW	TM	REA	Marb	BI	CCI	TI
-0.6	15	32	10.49	0.19	0.13	10	5	15

r KR 1131/13  
 | Wendt 9386  
 L WENDT 788  
 r SR FUSION 102/18  
 | SR Ms Fusion 613/J10  
 L SR 40/6

613/L14 was sired by our high performing Wendt bull, 9386, and out of 613/J10 who has a 339 day average calving interval after 3 calves. She has 9 EPDs ranking in the Top 35% and indices of 10-10-10. 613/L14 sells with a bull calf born 9/19/25 sired by DP MR CHOSEN 038/J2.

15

O/X RANCH



\$

28

Reg: 20212403 4/25/2021 P

Bred to: XL's Pendleton AI on 4/25/2025 and Pasture Exposed to BSR RIP (20200819)

Calf at side: Heifer

BW	WW	YW	TM	REA	Marb	BI	CCI	TI
-0.8	2	5	-2.83	0.01	0.22	45	70	30

r RED DOC 6032  
 | Red Doc Tequila 9028  
 L Red Doc 2130  
 r RED DOC 4079  
 | BR ANNIE  
 L LILY

O/X Ranch is happy to be offering a 3-N-1 that will be a great addition to any herd. BR Rustic Rose 28 is a deep cherry red, polled, proven female. With a calving interval of 353 days, 28 sells with her second calf, O/X 948 at side. 28 is bred back and was AI'd on 4/25/2025 to XL's Pendleton. O/X 948 is a February 2025 calf sired by Harris 8/5 and DNA is pending.

16

SAN JOSE CATTLE CO



\$

SJ Lady Tecate 747L2

Reg: 20231414 5/24/2023 H

Bred to: SJ Mr. Rockport 264K3

Calf at side: 4/11/25

SJ Lady Mescalero 747N2

BW	WW	YW	TM	REA	Marb	BI	CCI	TI
-0.1	13	9	9.93	-0.02	0.16	25	20	25

r Harris Farms 190E  
 | Harris Tecate 190E 253G38  
 L SR T45  
 r SJ BOOMERANG 614  
 | SJ Lady 102  
 L SJ MISS 747

747L2 is a Harris Tecate daughter that goes back to Boomerang, Patton and Copperhead on the bottom side. She sells with her first calf at side, a flashy heifer sired by young herd sire Harris Mescalero, a Chosen One son. Not only does this heifer calf have show ring potential, but she also has an extremely balanced EPD profile, ranking in the top 35% in 12 EPD traits. 747L2 is bred back to SJ Rockport 264K3, a young power bull out of the great Harris 264E4 donor cow.

17

**RED DOC FARM**

**2669**

Reg: 20225542 2/9/2022 P  
Bred to:

r HARRIS 30/5  
Harris Son of a Gun 153G  
L HINNANT-FULBRIGHT 9/153  
r RED DOC 4141  
Red Doc 7350  
L RED DOC 3061

BW	WW	YW	TM	REA	Marb	BI	CCI	TI
-1.6	4	1	1.75	-0.04	0.11	60	65	50



\$

This Red Doc heifer exemplifies the depth, power, and maternal look of a long-lasting cow. This balanced and thick-made heifer is sure to be powerful and productive. Red Doc 2669 will certainly thrive in any range conditions while raising the kind of calves that will increase your profits on sale day. She is natural service to Red Doc 2221 (20223664), Red Doc Chimayo 2402 (20226387), and Red Doc Heartburn 3204 (20233207). Her bull calf, Red Doc 5551 (20253697), was born on October 19, 2025, with a birthweight of 67 lb. DNA is pending on the calf.

18

**RED DOC FARM**

**1276**

Reg: 20215555 3/15/2021 S  
Bred to:

r Red Doc 7321  
Red Doc 9407  
L Red Doc 6247  
r RED DOC 4141  
Red Doc 7017  
L RED DOC 3055

BW	WW	YW	TM	REA	Marb	BI	CCI	TI
-2	3	9	-0.05	0.15	0.17	25	45	15



\$

Red Doc 1276 is a clean, feminine cow out of one of Red Doc's most consistent lines that go back to Red Doc Dinero 4088. She has an impressive actual IMF of 5.41 with a 0.17 Fat. She is natural service to Hefte Ranch L114 ET (20226372), Red Doc 2221 (20223664), Red Doc Chimayo 2402 (20226387), and Red Doc Heartburn 3204 (20233207). Her bull calf, Red Doc 5550 (20253696), was born on October 2, 2025, with a birthweight of 68 lb. DNA is pending on the calf.

19

**RED DOC FARM**

**1555**

Reg: 20217714 9/28/2021 H  
Bred to:

r RED DOC TRUMP 5127  
Red Doc Trump's Acquittal 8511  
L RED DOC ET 6012  
r RDF 7-217  
Red Doc 2148  
L RDF 6-425

BW	WW	YW	TM	REA	Marb	BI	CCI	TI
-1.6	20	32	10.12	0.25	0.23	10	35	3



Red Doc 1555 is a Red Doc Trump's Acquittal 8511 daughter. Her notable EPDs include 4 in the top 10%: BW, YW, CW, & REA. She is natural service to Hefte Ranch L114 ET (20226372), Red Doc 2221 (20223664), Red Doc Chimayo 2402 (20226387), and Red Doc Heartburn 3204 (20233207). Her bull calf, Red Doc 5526 (20253698) was born on October 5, 2025, with a birthweight of 80 lb. DNA is pending on the calf.

# 20 EXCELL SANTA GERTRUDIS



\$

**XL's Cleo Candy 018 ET** r 777 HONEY BADGER 1202  
 Reg: 20245818 12/23/2024 H | 777HONEYBADGER CANDYMAN ET  
L HARRIS FARMS 17/0  
r DREAMBOAT 037E2  
**XL'S CLEOPATRA 008 (ET)**  
L RAR MISS ABIGAIL 1637

Combining the breed-leading Dreamboat 037E2 and Honey Badger 1202, how could this female not be on your purchase list? Tag 018 is long necked, deep sided, and as sound as they come. If you're looking for a replacement female that has a who's who pedigree, then 018 is the one!

# 21 TRIPLE P RANCH



\$

**154 - Triple P's Lulu** r Red Doc CHECKMATE 7069  
 Reg: 20247023 11/29/2024 P | SR SENDERO 125/19  
L 3S2E MARLA 368D2 (ET)  
r BRIGGS 654/13  
**TRIPLE P'S LIVELY**  
L TRIPLE P'S LINDI 001

This Nov 24 heifer has cow power written all over her and in her pedigree too. She is backed by the foundational L line here that has produced Champions like Triple P's Legacy and Legend, our herd sires. Sired by SR Sendero. Triple P's Lulu is stout and thick with a huge middle and hip. But she's put together in a smooth, balanced, bold maternal package. This is the kind of female you buy to make steers or breed to make replacement females, she can be your next cornerstone.

# 22 BLACK TIP CATTLE



\$

**A PHN M7511** r Red Doc ET Lumbre 8509  
 Reg: 20247051 P | RED DOC INCINERAOR 1005  
L Red Doc Vino Blanco 9070  
r HARCO T956 (ET) T956  
**1452**  
L HARCO T720 (ET) T720

**B PHN M1156** r Red Doc ET Lumbre 8509  
 Reg: 20247052 P | RED DOC INCINERAOR 1005  
L Red Doc Vino Blanco 9070  
r KR912/18  
**QVF MS X FACTOR 003K8**  
L HARRIS FARMS 003/1

Two beautiful stout-made et heifers from Black Tip Cattle. These heifers are out of Red Doc Incinerator and maternal lines that are well proven. M7511 is out of 1452 who has established herself as a matriarch in the breed for quality and performance. M1156 is more moderate in her build but just as thick, she goes back to the 003 cow who has positively impacted so many programs.

# 23

## FOUR J CATTLE



\$

**A 5534**

Reg: 20246143 10/4/2024 P

BW	WW	YW	TM	REA	Marb	BI	CCI	TI
-2.9	6	6	5.33	-0.02	-0.03	40	40	40

**B 5620**

Reg: 20246160 11/7/2024 H

BW	WW	YW	TM	REA	Marb	BI	CCI	TI
-0.3	27	31	21.4	0.25	0.45	5	25	2

**C 5652**

Reg: 20246162 9/30/2024 H

BW	WW	YW	TM	REA	Marb	BI	CCI	TI
-0.3	17	17	11.83	0.1	0.31	35	75	15

- ┆ FOUR J 12/028
- ┆ **FOUR J 1454**
- ┆ SR 104/9
- ┆ FOUR J 20/304X
- ┆ **3033X**
- ┆ FOUR J 20/321
- ┆ Red Doc Trump's Acquittal 8511
- ┆ **RED DOC FUEGO 1032**
- ┆ CHR 8-6
- ┆ RED DOC EL SUENO 8020
- ┆ **RED DOC 2005**
- ┆ RED DOC 5143
- ┆ Red Doc Trump's Acquittal 8511
- ┆ **RED DOC FUEGO 1032**
- ┆ CHR 8-6
- ┆ Briggs 828E
- ┆ **BRIGGS 579J**
- ┆ BRIGGS 579E

5534's indices show she will excel maternally with a balance of calving ease and growth. Four J is committed to this genetic line. In 2024, 13 head from her dam's full sibling were produced. Her sire is very balanced with indices of 40-25-55. We are confident that matings like 5534s will produce economic and long-term sustainability. We love 5620's pedigree. A Red Doc Fuego 1032 female out of Red Doc 5143, a 75% female that goes back to Red Doc El Sueno 8020. This performance packed mating is donor quality with potential to change a program's trajectory in one calf crop. 5620 places 7 traits in the top 10% including WW at 5% and Marb at 2%. Her 103 BW ratio 106 WW ratio in a 20+ head contemporary group supported by great indices indicate she is the type that will be a profitable addition to any operation. Fuego 1032 daughters like 5652 combine eye-catching phenotype with data sets that indicate profitability at the highest level. Carcass EPDs place CW, REA, and Marb in the top 30% of the breed and combined with very acceptable WW and YW EPDs, her calves will allow producers to balance profitability with quality.

# 24

## REESE RANCH



\$

**A 30 / H7M**

Reg: 20246220 9/25/2024 P

BW	WW	YW	TM	REA	Marb	BI	CCI	TI

**B 70 / 21M**

Reg: 20246225 10/20/2024 P

BW	WW	YW	TM	REA	Marb	BI	CCI	TI

- ┆ HEFTE RANCH D56
- ┆ **SOUTHBOUND 11/9**
- ┆ RED DOC 6310
- ┆ SR PARADIGM 135/7
- ┆ **SR MS PARADIGM 30/H7**
- ┆ SR ARKOMA 30/0
- ┆ SR PARADIGM 30/H7
- ┆ **SR PARAMOUNT 30/H4**
- ┆ SR ARKOMA 30/0
- ┆ HARRIS 089D4
- ┆ **RED RANCH 70/21**
- ┆ Vesper Ranch 5/17

Reese Ranch is offering two beautiful like-kind heifers. 30/H7M is out of a SR Paramount full sister SR 30/H7, one of Reese Ranch's most well balanced and consistent cows. Reese 70/21M is out of a power house Vesper cow that drops hammers year after year.

# 25

## DOUBLE BARREL CATTLE CO



\$

**XX007**

Reg: 20250291 2/21/2025 P

BW	WW	YW	TM	REA	Marb	BI	CCI	TI
-0.1	24	30	12.56	0.22	-0.11	30	40	25

- ┆ Harris 79/4
- ┆ **Red Doc Blaze 9508**
- ┆ Red Doc 5011
- ┆ Red Doc CHECKMATE 7069
- ┆ **RED DOC ET 1557**
- ┆ RED DOC ET 6012

This heifer is one of our favorites this year. She is sired by Red Doc Blaze 9508 and her dam was the high selling female in the Elite sale of 2023. The dam is also a full sib to Top Cut owned by Passion Farms. Genetically, she has one of the strongest pedigrees and phenotypically she holds her own. This heifer comes halter broke and is entered into the Hot Gert Show if the new owner chooses to exhibit her.

# 26 SAN JOSE CATTLE CO



\$

## A SJ Lady Mescalero 11M5

Reg: 20244732 9/6/2024 P

BW	WW	YW	TM	REA	Marb	BI	CCI	TI
0.5	20	24	12.21	0.11	0.03	35	35	35

♀ KR651/18(CHOSEN ONE)  
**HARRIS MESCALERO 724K13 ET**  
 ♀ Harris 1323 724F29  
 ♀ SJ PATTON 300  
**SJ LADY 942**  
 ♀ SJ LADY CATALINA 519

## B SJ Lady Mescalero 747M

Reg: 20245768 9/29/2024 P

BW	WW	YW	TM	REA	Marb	BI	CCI	TI
-0.8	5	12	6.63	0.09	0.04	55	65	45

♀ KR651/18(CHOSEN ONE)  
**HARRIS MESCALERO 724K13 ET**  
 ♀ Harris 1323 724F29  
 ♀ SJ BOOMERANG 614  
**SJ Lady 102**  
 ♀ SJ MISS 747

11M5 and 747M are both sired by young herd sire Harris Mescalero, a Chosen One son. These heifers go back to Wavemaker, Patton, Don Dan and Boomerang on the bottom side, thus combining modern cutting-edge genetics with legacy San Jose genetics, resulting in a unique breeding piece for any program. They sell open and ready to breed to the bull of your choice.

# 27 REDWOOD RANCH



\$

## A Redwood Sangria RW2

Reg: 20253060 3/12/2025 H

BW	WW	YW	TM	REA	Marb	BI	CCI	TI
0.6	15	15	12.15	-0.07	-0.02	55	45	60

♀ COPPERHEAD 214  
**C-P Copperhead 915C4**  
 ♀ SILVA 915/3  
 ♀ GERT DYNASTY  
**FF BACARDI ON ICE**  
 ♀ URBANOKSY 9-60

## B Redwood Cherry RW3

Reg: 20253061 3/18/2025 P

BW	WW	YW	TM	REA	Marb	BI	CCI	TI
0.6	22	25	15.05	0.07	-0.08	40	45	40

♀ Townsend Never Side 0615  
**777 BRUNO BEAURIBAGE**  
 ♀ GRANDVIEW ANNIE  
 ♀ XL'S MIDAS 355  
**IHH CRIMSON**  
 ♀ TOP SHELF MARTINA McBRIDE

This set of young, open heifers are gentle and could be started as your next show prospects or great replacements for your herd. RW Sangria (pictured right) is a dehorned heifer by C-P Copperhead out of an Urbanosky cow. RW Cherry (pictured left) is a polled heifer by 777 Bruno Beuribage out of a Midas daughter.

# 28 ROCKING F CATTLE



\$

## A RF Dottie 12/464

Reg: 20241728 9/21/2024 P

BW	WW	YW	TM	REA	Marb	BI	CCI	TI
1.6	19	29	18.38	0.13	0.04	40	50	35

♀ Red Doc EL HOMBRE 6279  
**WR 313**  
 ♀ CB 735  
 ♀ CA/RDF SALVADOR 6272  
**CA 1230**  
 ♀ JM 258

## B RF Delta 16/574

Reg: 20242128 10/17/2024 P

BW	WW	YW	TM	REA	Marb	BI	CCI	TI
0.6	12	20	14.71	0.09	0.06	45	50	40

♀ Red Doc EL HOMBRE 6279  
**WR 313**  
 ♀ CB 735  
 ♀ RDF LA JOY'S BOY 8183  
**20171775**  
 ♀ 3/14

These heifers are just turning a year old and will soon be ready for the bull of your choice. They are all out of our herd bull WR 313 (Willie 20198147) and are all stout heifers ready to go to work and make beautiful babies. They have all been started on halters. They will make a great addition to any herd.

29

**LAZY DOG RANCH**



**LZDR Ms. Patsy M26**

Reg: 20241432 9/24/2024 P

BW	WW	YW	TM	REA	Marb	BI	CCI	TI
0.3	16	16	12.82	0.16	0.09	35	25	45

♂ CA/RDF MATEO 7238  
 | MR. WF 2033  
 ♀ Hefte Ranch H33  
 ♂ SR GENUINE 69/6  
 | SR Ms Genuine 816/J  
 ♀ SJ LADY ZARA816

LZDR MS PATSY M26, "Patsy" is one of two heifers born in 2024 out of our herd sire, MR WF 2033, which was one of the top selling bulls at the 2023 Tried & True Sale. He has a balanced set of EPD's and an excellent record of low birth weights. Patsy's dam, SR Ms Genuine 816/J is a great combination of performance and production genetics and is a standout female in our herd, with easy calving and great maternal characteristics. Patsy has a quality pedigree with strong maternal influence and a collected personality making her a great addition to any program. This deep bodied, powerful female is proudly feminine. Take Patsy home and put her to work or take her to town and show her off!

30

**MARSHALL FARMS**



**A 536**

Reg: 20251215 4/29/2025 P

BW	WW	YW	TM	REA	Marb	BI	CCI	TI
-0.2	14	19	13.34	0.09	0.2	25	25	25

♂ Hefte Ranch H82  
 | HEFTE RANCH L08  
 ♀ Hefte Ranch B07  
 ♂ KR 191/13

**B 545**

Reg: 20251214 6/10/2025 P

BW	WW	YW	TM	REA	Marb	BI	CCI	TI
-0.8	13	13	10.63	0.07	0.07	40	40	35

| HEFTE RANCH K140  
 ♀ Hefte Ranch A62  
 ♂ Hefte Ranch H82  
 | HEFTE RANCH L08  
 ♀ Hefte Ranch B07  
 ♂ SR GENUINE 69/6  
 | SR MS GENUINE 155/J  
 ♀ CSC 125-7

Two beautiful little open heifers out of Hefte Ranch L08. Both of these heifers are out of cows purchased from the Tried and True Sale. Incredible pedigrees and EPD's backing both of these heifers. Both of these heifers are very gentle and have the opportunity to make show heifers or cows!

The South Texas Santa Gertrudis Association  
 and the South Texas Junior Santa Gertrudis Association  
 would like to thank  
**San Jose Cattle Company**  
 for generously donating Saturday's lunch.

# 31

## PAINTED ASS RANCH

### A 1/5 Apple

Reg: 20251182 1/1/2025 H

BW	WW	YW	TM	REA	Marb	BI	CCI	TI
-0.2	9	9	7.06	-0.04	0.02	55	55	60

♂ HEREFORD (HORNED)  
 ♀ HEREFORD (HORNED)  
 ♀ HEREFORD (HORNED)  
 ♂ PA Rooster Cogburn  
 ♀ PA DUKES MATTIE ROSS  
 ♀ SR 111/18



\$

### B 2/5 Sauce

Reg: 20251183 1/1/2025 H

BW	WW	YW	TM	REA	Marb	BI	CCI	TI
-0.4	-1	-1	2.09	-0.06	0.02	85	80	85

♂ HEREFORD (HORNED)  
 ♀ HEREFORD (HORNED)  
 ♀ HEREFORD (HORNED)  
 ♂ PA Rooster Cogburn  
 ♀ PA DUKES MATTIE ROSS  
 ♀ SR 111/18

Twin heifers sired by Hoffman Ranch Flash (Horned Hereford). Dam is a first-time heifer, who delivered unobserved. Apple and Sauce were vigorous nursing and have grown exceptionally since placing on feed. Both are gentle and easy to be around.

# 32

## ROCKING F CATTLE

### RF Cinnamon 14/324

Reg: 20241730 9/22/2024 P

BW	WW	YW	TM	REA	Marb	BI	CCI	TI
1	17	19	13.51	0.05	0.03	50	55	45

♂ Red Doc EL HOMBRE 6279  
 ♀ WR 313  
 ♀ CB 735  
 ♂ HEREFORD (HORNED)  
 ♀ WR 394H  
 ♀ Briggs 22C2



\$

RF Cinnamon 14/324 is a Level II 75% start five heifer that had a birth weight of 71 and a 205 day weaning weight of 573. Cinnamon goes back to Red Doc El Hombre on her top side. She is a well built solid red heifer with a beautiful color and has been started on halter.

# 33

## RED DOC FARM

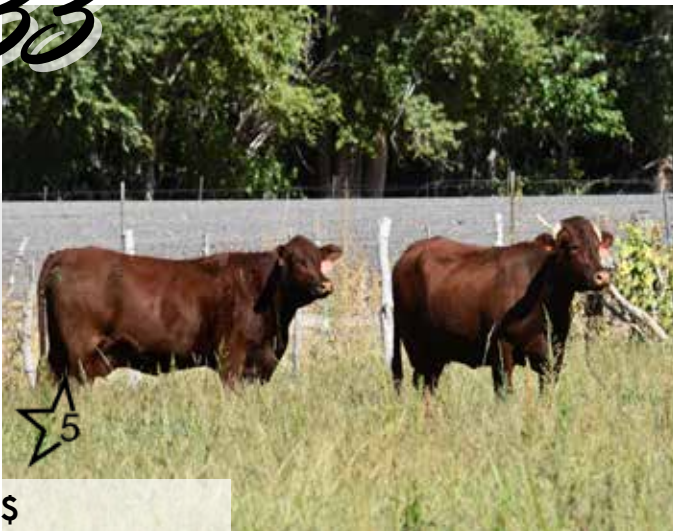
### 2658

Reg: 20225508 1/22/2022 H

Bred to:

BW	WW	YW	TM	REA	Marb	BI	CCI	TI
0.2	20	9	15.45	0.03	0.12	35	30	40

♂ OLIVAREZ RANCHES 4/545  
 ♀ Red Doc 7023  
 ♀ RED DOC 5029  
 ♂ AMERICAN SHORTHORN  
 ♀ Red Doc 5148  
 ♀ OLIVAREZ 9/342



\$

This Red Doc heifer exemplifies the depth, power, and maternal look of a long-lasting cow. This balanced and thick-made heifer is sure to be powerful and productive. Red Doc 2658 has an actual IMF of 4.68 with an impressive 11 REA. She is natural service to Hefte Ranch L114 ET(20226372), Red Doc 2221(20223664), Red Doc Chimayo 2402(20226387), and Red Doc Heartburn 3204(20233207). Her heifer calf, Red Doc 5552 (20253696), was born on October 14, 2025, with a birthweight of 65 lb. DNA is pending on the calf.

# Thirsty Cattle are a Losing Investment.

Keep your cattle hydrated with real-time alerts on water levels, leaks and more with **Ranchbot**.



**No more water worries. Trough Direct Makes it easy to monitor your trough water levels and ensure your livestock always have a drink.**

## Stay Connected

Satellite communication keeps your trough connected 24/7.

## Simple Setup

Operates on its own. No additional devices required.

## Get Notified

Receive near real-time alerts from your trough direct to your device.

**Business Development Manager**  
Tim Lockhart | 979-204-4302  
[tim.lockhart@ranch-bot.com](mailto:tim.lockhart@ranch-bot.com)



# 34 SAN JOSE CATTLE CO



## SJ Miss Tecate 402M

Reg: 20241156 2/17/2024 P  
Bred to: SJ Mr. Rockport 264K3

♂ Harris Farms 190E  
Harris Tecate 190E 253G38  
♂ SR T45  
♀ HEREFORD (HORNED)  
HEREFORD (HORNED)  
♀ HEREFORD (HORNED)

BW	WW	YW	TM	REA	Marb	BI	CCI	TI
0.2	8	5	8.94	0	0.25	40	40	45

402M is a flashy Star 5 heifer sired by Harris Tecate and out of a Double L bred Hereford cow. She will make you some ultra competitive Star 5 show prospects. She sells bred to SJ Rockport 264K3, a powerful son of the great Harris 264E4 donor cow.

# 35 RED DOC FARM



## 4428

Reg: 20244428 4/8/2024 P  
Bred to: Red Doc 3541

♂ Red Doc CHECKMATE 7069  
Red Doc 9063  
♀ Red Doc 7055  
♀ TOP SHELF C14  
Miss Hudek Farms 13/8  
♀ Crossbreed

BW	WW	YW	TM	REA	Marb	BI	CCI	TI
-0.3	-4	-3	-3.86	0.01	-0.06	>95	95	95

This eye-catching Red Doc Star5 heifer is super clean, soggy, and polled. Balanced in her design, this heifer is bred to Red Doc ET 3541 (20236332), the full embryo brother to Red Doc Fuego 1032, and is due to calve in Spring 2026.

# 36 DIAMOND T LAND & CATTLE CO



## M33

Reg: 20247003 3/10/2024 H  
Bred to: AI 5/14/25 to Red Doc Sueno 2386 (20226388). PE to Red Doc ET 0406 (20207294) and Red Doc Oro 0404 (20206960) from 5/26/25 to 7/18/25.

♀ Briggs 051D  
RED DOC 1254  
♀ Red Doc 6166  
♀ ANGUS  
ANGUS  
♀ ANGUS

BW	WW	YW	TM	REA	Marb	BI	CCI	TI
-0.2	1	2	1.1	0.01	-0.05	85	80	90

## M51

Reg: 20247005 5/10/2024 H  
Bred to: AI 5/14/25 to Red Doc Sueno 2386 (20226388). PE to Red Doc ET 0406 (20207294) and Red Doc Oro 0404 (20206960) from 5/26/25 to 7/18/25.

♀ Briggs 051D  
RED DOC 1254  
♀ Red Doc 6166  
♀ ANGUS  
ANGUS  
♀ ANGUS

BW	WW	YW	TM	REA	Marb	BI	CCI	TI
-0.5	15	16	8.41	0.05	-0.05	40	35	45

Big stout set of bred red mott females. These two heifers are quality all the way through and will fit in a breed up or high end commercial program. The calves out of these will be 3/4 Santa Gertrudis. These beautiful heifers were born and raised in Utah, they were brought down to South Texas mid July and have acclimated well.

# 37 DIAMOND T LAND & CATTLE CO



## M38

Reg: 20247009 3/7/2024 H  
Bred to: AI 5/14/25 to Red Doc Sueno 2386 (20226388). PE to Red Doc ET 0406 (20207294) and Red Doc Oro 0404 (20206960) from 5/26/25 to 7/18/25.

♀ Briggs 051D  
RED DOC 1254  
♀ Red Doc 6166  
♀ ANGUS  
ANGUS  
♀ ANGUS

BW	WW	YW	TM	REA	Marb	BI	CCI	TI
0.7	2	6	1.98	0.01	-0.05	90	85	95

## M40

Reg: 20247004 3/7/2024 H  
Bred to: AI 5/14/25 to Red Doc Sueno 2386 (20226388). PE to Red Doc ET 0406 (20207294) and Red Doc Oro 0404 (20206960) from 5/26/25 to 7/18/25.

♀ Briggs 051D  
RED DOC 1254  
♀ Red Doc 6166  
♀ ANGUS  
ANGUS  
♀ ANGUS

BW	WW	YW	TM	REA	Marb	BI	CCI	TI
0.4	3	5	2.17	0.01	-0.05	85	80	90

Same quality and depth as the first group, maybe a frame score smaller. These gentle heifers are ready to go to work raising calves. The calves out of these will be 3/4 Santa Gertrudis. These beautiful heifers were born and raised in Utah, they were brought down to South Texas mid July and have acclimated well.

38

DIAMOND T LAND & CATTLE CO



Same quality and depth as the first group, maybe a frame score smaller. These gentle heifers are ready to go to work raising calves. The calves out of these will be 3/4 Santa Gertrudis. These beautiful heifers were born and raised in Utah, they were brought down to South Texas mid July and have acclimated well.

M60

Reg: 20247008 3/15/2024 H  
 Bred to: AI 5/14/25 to Red Doc Sueno 2386 (20226388). PE to Red Doc ET 0406 (20207294) and Red Doc Oro 0404 (20206960) from 5/26/25 to 7/18/25.

BW	WW	YW	TM	REA	Marb	BI	CCI	TI
-0.1	3	5	2.45	0.02	-0.05	80	70	85

r Briggs 051D  
**RED DOC 1254**  
 L Red Doc 6166  
 r ANGUS  
**ANGUS**  
 L ANGUS

M54

Reg: 20247007 3/2/2024 H  
 Bred to: AI 5/14/25 to Red Doc Sueno 2386 (20226388). PE to Red Doc ET 0406 (20207294) and Red Doc Oro 0404 (20206960) from 5/26/25 to 7/18/25.

BW	WW	YW	TM	REA	Marb	BI	CCI	TI
0	-1	1	0.47	0	-0.05	90	85	95

r Briggs 051D  
**RED DOC 1254**  
 L Red Doc 6166  
 r ANGUS  
**ANGUS**  
 L ANGUS

M69

Reg: 20247006 3/13/2024 H  
 Bred to: AI 5/14/25 to Red Doc Sueno 2386 (20226388). PE to Red Doc ET 0406 (20207294) and Red Doc Oro 0404 (20206960) from 5/26/25 to 7/18/25.

BW	WW	YW	TM	REA	Marb	BI	CCI	TI
0.7	3	6	2.25	0.01	-0.05	90	80	90

**RED DOC 1254**  
 L Red Doc 6166  
 r ANGUS  
**ANGUS**  
 L ANGUS



ALL NATURAL SUET TALLOW



**RESTORATIVE & NATURAL SOLUTION FOR SKIN CARE, FACE CARE AND OTHER TOPICAL USES. ALL OF OUR TALLOW IS GROWN ON OUR FAMILY RANCH, PROCESSED IN OUR OWN KITCHEN, AND SCENTED WITH PURE ESSENTIAL OILS. WE CAN GUARANTEE THAT WHAT'S ON THE LABEL IS IN EACH BOTTLE, AND MADE WITH LOVE, FROM OUR RANCH, TO YOUR HOME.**



DIAMONDTRANCH66@GMAIL.COM | DIAMONDTTALLOW.COM | EPHRIAM, UT

Bull 1

# PASSION FARMS

## 5005

Reg: 20251021 3/10/2025 S

Red Doc CHECKMATE 7069

Red Doc ET Top Cut 9568  
Red Doc ET 6012

Red Doc 6089

Red Doc Vino Fino 9148  
Red Doc 7301

BW	WW	YW	TM	REA	Marb	BI	CCI	TI
0.9	14	19	9.18	0.12	0.18	40	50	30



Step into the future of beef excellence with Passion Farms' elite private treaty offerings of registered Santa Gertrudis bulls where performance meets pedigree and genetics are bred with purpose. Whether you're building your herd, chasing the banner, or driving profitability, these bulls are phenomenal trait leaders in growth, fertility, carcass merit, and show ring potential. What sets these bulls apart? Powerful genetics from proven sires : Red Doc ET Top Cut 9568 - a performance powerhouse whose progeny consistently rank at the top of their contemporary group. Hefte F19 Pure Swagger - A sire of champions, owned by Buena Vida. Elite Donor Dams : Red Doc Vino Fino 9148 - The record setting closed off donor whose legacy is reserved for the best. Bringing exceptional maternal power, eye appeal, and consistency. Wendt's Dream Boat 2083 - A Baby Doll whose lineage is stacked with champions. Whether you're breeding your next class winner, AI sire, or herd bull, Passion Farms bulls are ready to leave a lasting impact.

Bull 2

# PASSION FARMS

\$

## 5009

Reg: 20251019 4/16/2025 P

Red Doc CHECKMATE 7069

Red Doc ET Top Cut 9568  
Red Doc ET 6012

Red Doc ET 0399

PASSION FARMS BEAUTY 3002  
Red Doc 8078

BW	WW	YW	TM	REA	Marb	BI	CCI	TI
-0.3	20	27	10.05	0.18	0.13	25	45	15

Bull 3

# PASSION FARMS

\$

## 5010

Reg: 20252988 5/9/2025 P

RED DOC NEVER SANK 5012

HEFTE F19 PURE SWAGGER  
Hefte Ranch D93

DREAMBOAT 037E2

WENDT'S DREAMBOAT 2083  
WENDT 1156

BW	WW	YW	TM	REA	Marb	BI	CCI	TI
-1.4	-3	2	2.84	0.06	-0.14	95	>95	80



# STRONG BULLS STRONGER BOTTOM LINE



PASSION FARMS BULLS ARE PERFORMANCE - TESTED AND PASTURE READY; BRED TO ADD VALUE WHERE IT MATTERS.

CONTACT US TODAY TO RESERVE YOUR NEXT HERD SIRE  
PASSION FARMS | 512-508-6747 | SANTOS & AL RASHID FAMILY

Bull

# PAINTED ASS RANCH



## PA Victory 7/4

Reg: 20246908 12/20/2024 P

BW	WW	YW	TM	REA	Marb	BI	CCI	TI
0.6	12	21	11.92	0.05	-0.14	75	80	65

r HEFTE F19 PURE SWAGGER  
**KK The Valedictorian**  
 l KK VALLEY GIRL  
 r RED DOC EN VIVO 8343  
**RED DOC 1461**  
 l Red Doc 8086

Don't miss out on the opportunity to have a super gentle, good looking, genetic superstar of a bull calf. PA Victory is 9 months old and is sired by KK The Valedictorian out of a Red Doc cow RD1461. He has just enough Hereford on his dam's side to be low birth weight but super fast growing and thick muscled. Vic loves the show stick, is halter broke to stand tied and is just starting to lead with no problems.

Bull

# JTP CATTLE



## JTP Prime Time 19/4

Reg: 20241229 1/9/2024 H

BW	WW	YW	TM	REA	Marb	BI	CCI	TI
-0.5	17	14	15.81	0.12	-0.06	50	50	50

r RDF SANCHO'S NEVER BEFORE 1136  
**RED DOC ET 6343**  
 l RDF LC 373  
 r SR T22 (ET)  
**BSR MELANIA (ET)**  
 l MC's Baby Girl

Prime Time is the kind of bull that stops you in your tracks. He combines look, dimension, and power all in one impressive package. Backed by top-tier genetics, this bull offers the kind of predictability and performance every program needs. He's halter broke, easy to handle, and already has several division wins under his belt — proving he's got both the look and the structure to compete. Whether you're aiming to add muscle, depth of body, or overall presence to your herd, Prime Time is the kind of sire that can move your program forward in a hurry.

# Consignor Directory

Diamond T Land and Cattle Co  
 Double Barrel Cattle Company  
 Double G Farms  
 Excell Santa Gertrudis  
 Four J Cattle - The Justiss Family  
 Fulton Farms  
 Hefte Ranch  
 JTP Cattle Company  
 Lazy Dog Ranch  
 Marshall Farms  
 O/X Ranch  
 Passion Farms  
 Painted Ass Ranch  
 Red Doc Farm  
 Redwood Ranch  
 Reese Land and Mineral  
 Rocking F Cattle Ranch  
 San Jose Cattle Company  
 Strait Ranches  
 Triple P Ranch

diamondtranch66@gmail.com 435-851-2417  
 mikehunter.doublebarrelcattleco@gmail.com  
 garzalary0171@gmail.com 956-206-1244  
 excellsantagertrudis@gmail.com 281-705-0832  
 jjustiss@gvec.net 361-772-0301  
 fultonfarms39@gmail.com  
 hefteranch@gmail.com 210-414-2493  
 jtpcattleco2020@yahoo.com 979-218-7090  
 zach@lazydogcattle.com 817-688-0682  
 marshalljustin@ymail.com 580-229-6992  
 o.xranch@hotmail.com 505-429-0353  
 frank.santos@veritacor.com 512-508-6747  
 kadytexas@yahoo.com 210-445-9536  
 rjsanch@outlook.com 505-610-4555 or 505-507-7781  
 owensolivia77@gmail.com 979-533-1132  
 reese.ranch@yahoo.com 956-286-4232  
 rockingfcattleranch@yahoo.com 337-224-9621  
 dserna@elcoyote.com 361-294-5462  
 yanceystrait@straitranches.com 972-841-0989  
 kim.peppercorn@yahoo.com 713-703-8937

# Lazy Dog Cattle Co.

## Commercial Herefords

BEEF THAT SPEAKS FOR ITSELF: EFFICIENT, HARDY HEREFORDS BRED FOR PLATE PERFORMANCE.



## Santa Gertudis

BRED FOR THE RING, BUILT TO LAST: THEY SHINE IN SHOWS AND THRIVE IN PRODUCTION.



@lazydogcattle.co

SCURRY, TX  
WWW.LAZYDOGCATTLE.COM

Lazy Dog Cattle Co.

39.3597° N, 111.5863° W "BRED TO THRIVE AND SURVIVE"

# REGISTERED SANTA GERTRUDIS + STAR FIVE



INCREASED ADAPTABILITY

FEEDLOT PERFORMANCE

HYBRID VIGOR

DIAMOND T RANCH | THOMSON FAMILY | EPHRIAM, UT | 435-851-2417  
DIAMONDTRANCH66@GMAIL.COM



*Private Treaty Bulls and Females*  
**Encinal, TX | [ReeseRanchSantaGertrudis.com](http://ReeseRanchSantaGertrudis.com)**  
Registered Santa Gertrudis & Herefords  
Devlin Reese, 956-286-4239

## **POWER** *that* **PERFORMS**

We have private treaty bulls available for sale, as well as semen from some of the breed's top young sires.



South Texas Santa Gertrudis Breeders Association  
176 James Road  
Tivoli, TX 77990



SOUTH TEXAS  
**HERITAGE SALE**

Registered and Commercial Santa Gertrudis & Star5 Females  
*Plus* Private Treaty Bulls  
Nov 22, 2025 | Gonzales, TX | [SouthTexasHeritageSale.com](https://SouthTexasHeritageSale.com)

