

All-in-One Part Inspection Machine

One Vision System Limitless Solutions

Tabletop Vision Inspection Machine

All-in-one hardware & software solution to address your
vision inspection requirements

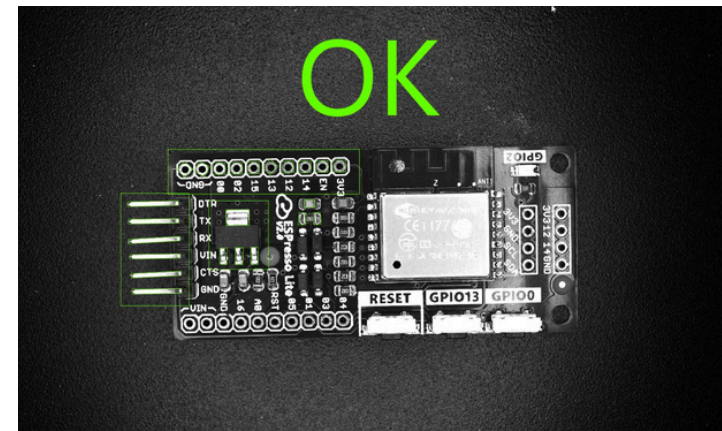
Economic pricing starting from RM12,000.00



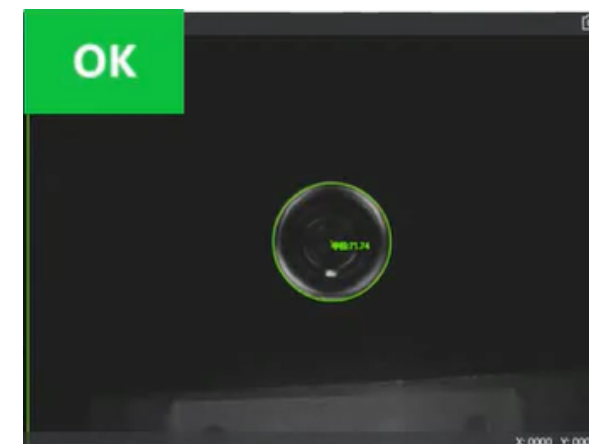
Comprehensive Inspection Functions

Wide Range of Applications

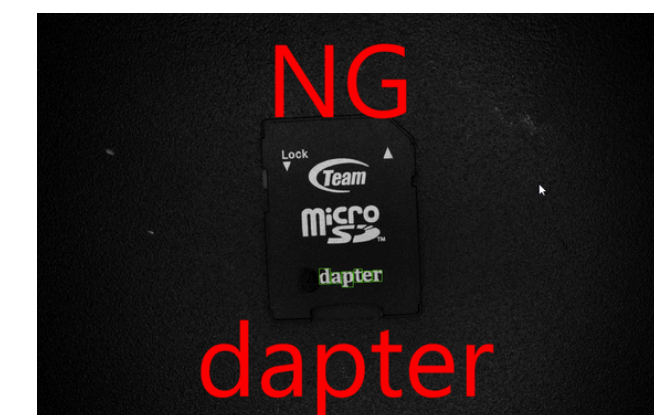
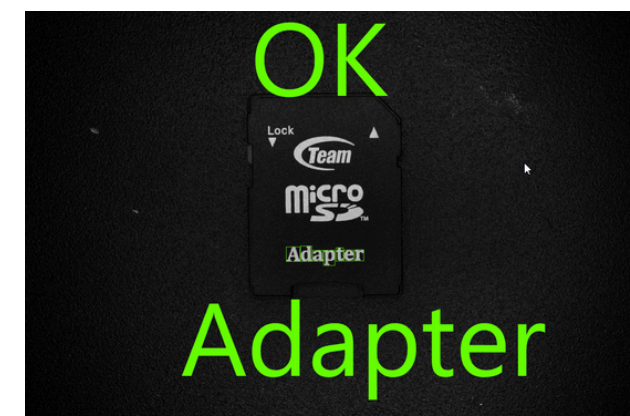
Parts Absence Presence Detection



Parts Measurement Checking



Parts Optical Character Recognition



Simplified Operating System

- ✓ User-friendly interface & image processing software
- ✓ Supports custom settings & programming
- ✓ Easy to operate & learn



- ✓ Meets various inspection needs with powerful yet simple operation
- ✓ Reduces human error and enhances efficiency
- ✓ Easy to move & install

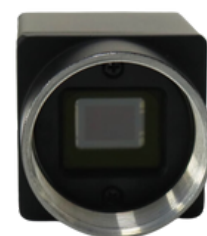
Specifications

Customizable to Meet Client's Needs

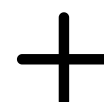
Optical System	CCD Industrial Camera, Industrial Lens and Lighting System
Number of Camera	1
Display Screen Size	11.6 inches
Inspection Speed	Fastest for a single product: 100ms

Power Supply Voltage	Single-phase 240V, 50Hz
Device Weight	Approximately 35kg
Device Dimensions	400mm × 350mm × 600 mm (L × W × H)
Inspection Mode	Static inspection

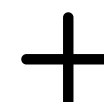
Standard Package



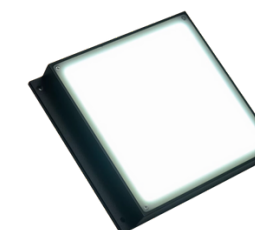
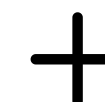
6 MP Colour Industrial Camera



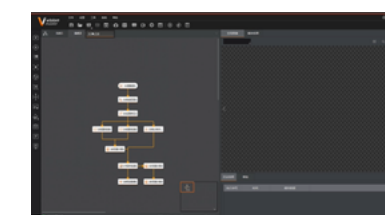
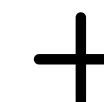
Industrial Lens



Industrial PC



Surface Light Source



Inspection Software

Contact Us



INSAIX INNOVATION SDN. BHD.
5, Jalan Selatan 3,
Taman Perindustrian Ringan Pulau,
81300 Skudai, Johor



+6 012-640 3195 (Kevin Goh)



kevin@insaxinnovation.com