



RIDE MORE.
RIDE SAFE.
RIDE TOGETHER.
21.09.25



Experience
MOTORCYCLES
KINGSLAND



AUCKLAND

RIDE BRIEFING

Saturday 21st September

Before We Ride

- Please arrive with a **full tank of fuel**.
- Coffee will be available at *Experience* from **9:00am**. Take time to relax, catch up, and settle in.
- **Rider briefing at 9:45am** → Gear on → **Stands up at 10:00am sharp**.

Ride Structure

- We'll be riding in groups of up to **20 bikes**, each with a **Pack Leader** and **Tail End Charlie**.
- Please ride in **staggered formation**:
 - Keep **2 seconds** behind the rider directly in front.
 - The rider offset to your left or right should sit in the middle of that gap.
 - This keeps the group tight and discourages cars from cutting in.
- **No overtaking within the group**. We'll stay in the formation we leave in.
- Hazards (potholes, roadkill, rough surfaces, etc.) will be signalled by the Pack Leader (A foot pointed out the side to the hazard). Please **pass the signal back** through the group.

Route & Stops


1. Depart *Experience* → Ride to **Manurewa** in groups.
2. Stop at **Hallertau Clevedon** for a regroup and group photo (helmets off, One Ride t-shirts on).
3. Continue to **Kawakawa Bay**. If parking allows, we'll stop for another group photo by the beach (helmets on, bikes stacked tight).
4. Ride on to **Kaiaua**. Please note:
 - The section before Kaiaua includes **technical twisties and hairpins** — give each other plenty of space.
 - Once on the coast road, it opens up and is a great ride.

Lunch & Return

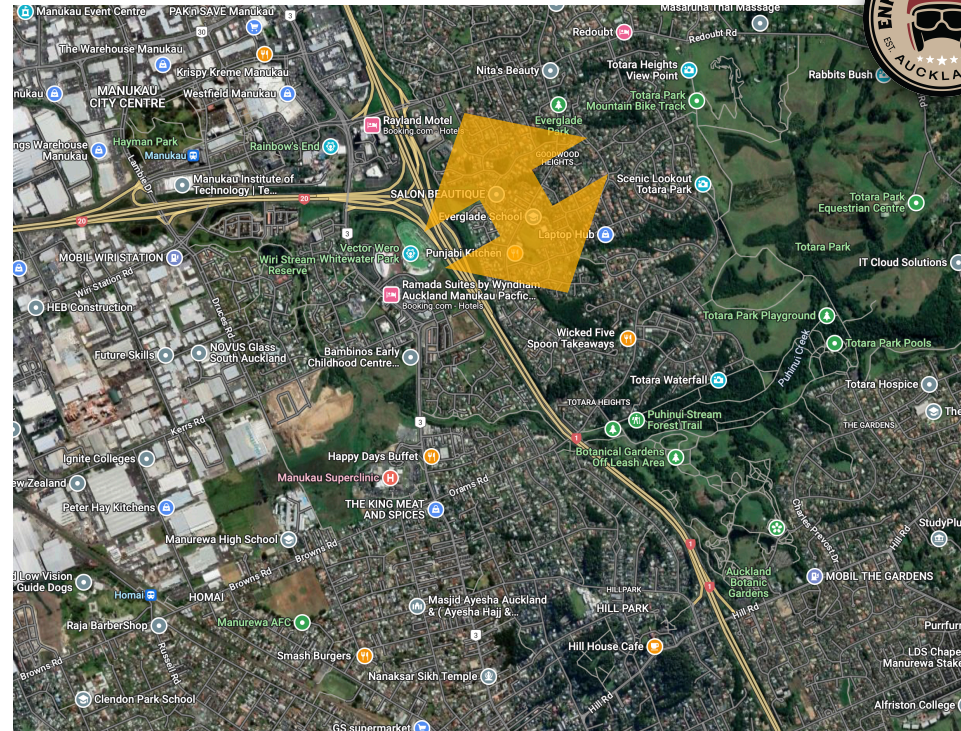
- We are booked into the **Bayview Hotel for lunch** (optional).
- Riders are free to make their own way home afterwards:
 - Via Miranda to SH2
 - Back the way we came
 - Or buddy up with others heading your way.

 Ride safe.

 Respect your group.

 Enjoy the day and the global Enfield spirit!

MANUKAU



Motorway Riding – Hill Road Exit

- As we feed onto SH1 in the **right-hand lane**, we will remain in it until the Manukau Interchange, where packs should begin moving left.
- To exit the motorway safely at **Hill Road**, all groups will need to move into the **left-hand lane** at the **Manukau Interchange**, as shown in the route notes (orange arrows). This gives plenty of time to position packs correctly before the exit. Follow your ride leader.

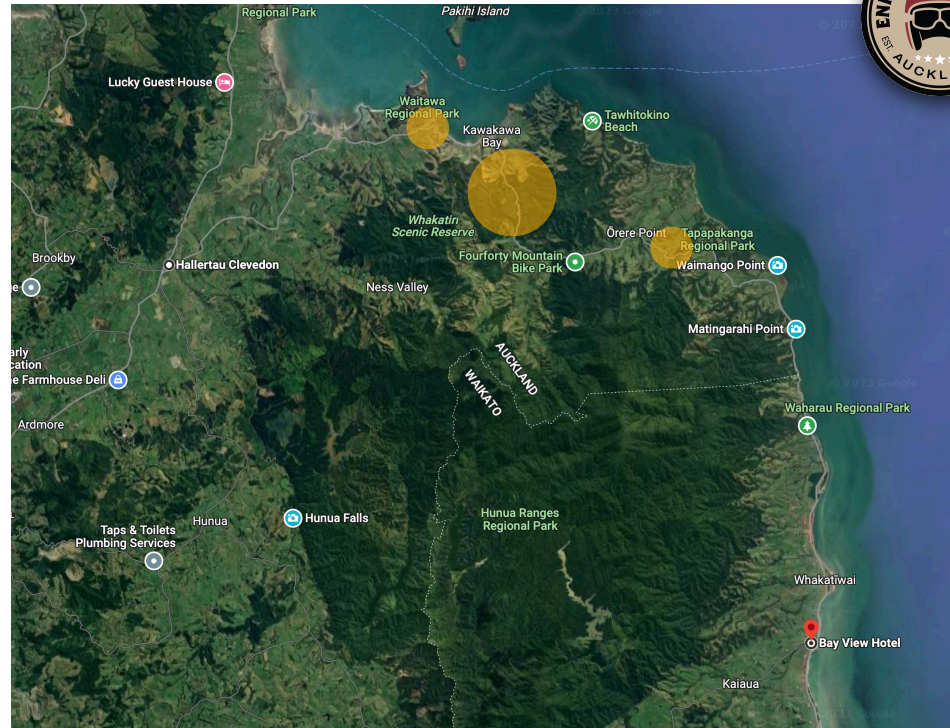
Pack Management

- Not all riders will be fully confident on the motorway. Pack Leaders should monitor for **gaps forming** and assess the **average speed**. If necessary, move your pack out of the right-hand lane earlier to maintain safety and flow.
- Please remember: we do not want to be a nuisance to other motorists.

Lane Discipline

- If traffic builds up, **do not lane split**. Remain in formation, travelling at the flow of traffic.

CLEVEDON TO KAIUAUA



TECHNICAL SECTIONS OF THE RIDE

- The most technical parts of the route are marked on the map with orange dots. Please remember to give each other plenty of space through these areas.

Kawakawa Bay Descent

- After the big sweepers, there is a tight hairpin leading into the descent to Kawakawa Bay.
- We will stop in Kawakawa Bay for a group photo before continuing.

Range Section After Kawakawa

- The road features back-to-back hairpins on both the ascent and descent.
- These corners are very tight and can catch even experienced riders off guard.
- Please ride at a safe, steady pace to minimise any potential incidents.

Final Twisties

- Another ascent and descent with tight corners, there is plenty of moss, but not an issue if you keep your lines.— same approach as Kawakawa: take it easy.

Coastal Stretch to Kaiaua

- The road opens up along the coast, but speeds drop as we pass through small settlements.
- Note: there is one area where a slip has been cleared; if the road is wet, expect clay residue on the surface.